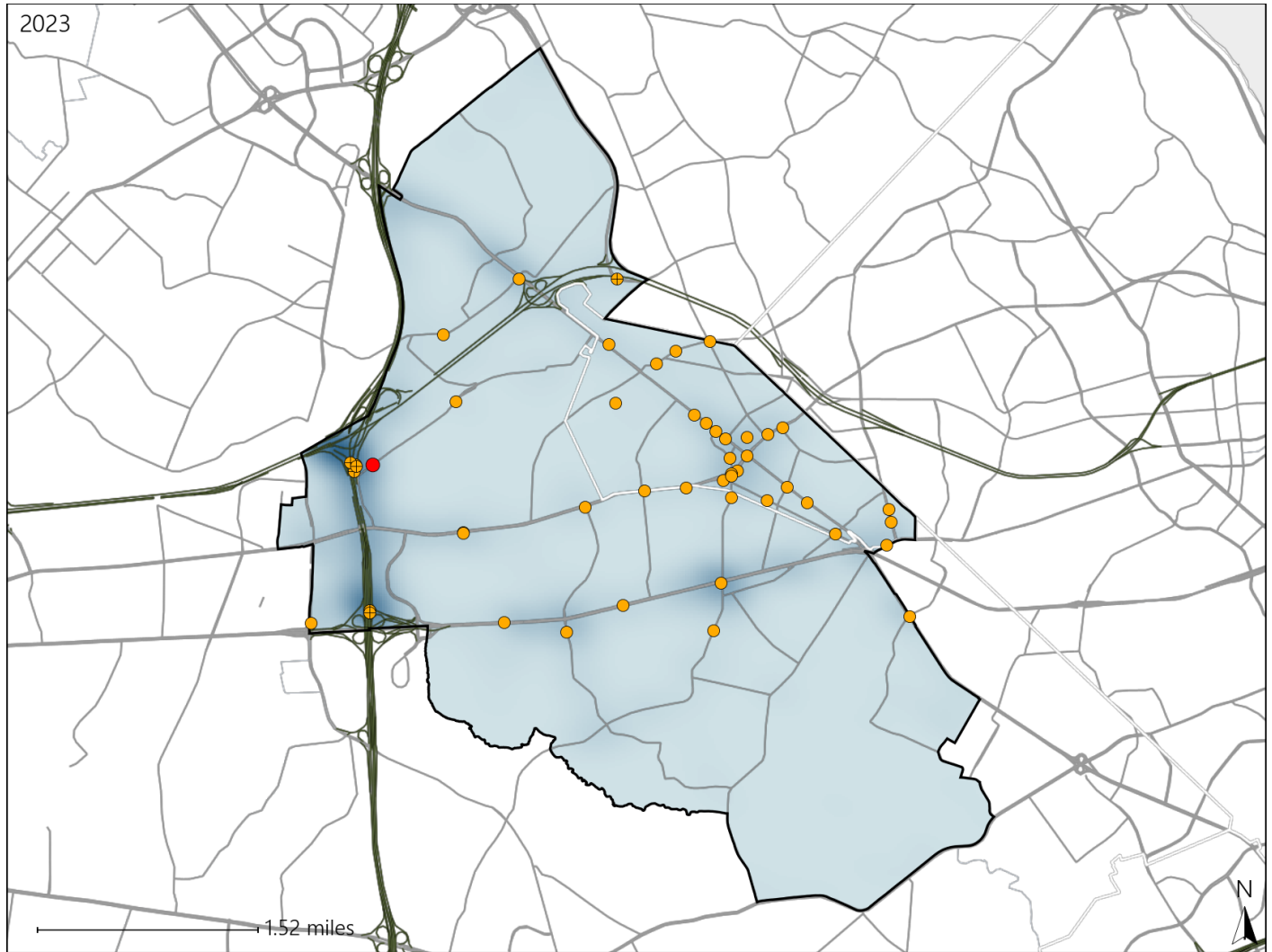


Virginia House District 13 Crash Statistics

Report Generated May, 2024

	Count	Highest Time Period(s)	Highest Day(s)	Highest Month(s)
Fatal Crashes	1	3:00am - 5:59am	Monday	November
Resulting Fatalities	1	(100%)	(100%)	(100%)
Serious Injury Crashes	49	6:00pm - 8:59pm	Monday	September
		(20%)	(27%)	(16%)



House District 13 Crashes

Interstate Crashes

- Fatal
- Serious Injury

Non-interstate Crashes

- Fatal
- Serious Injury

The blue gradient represents the density of all crashes.

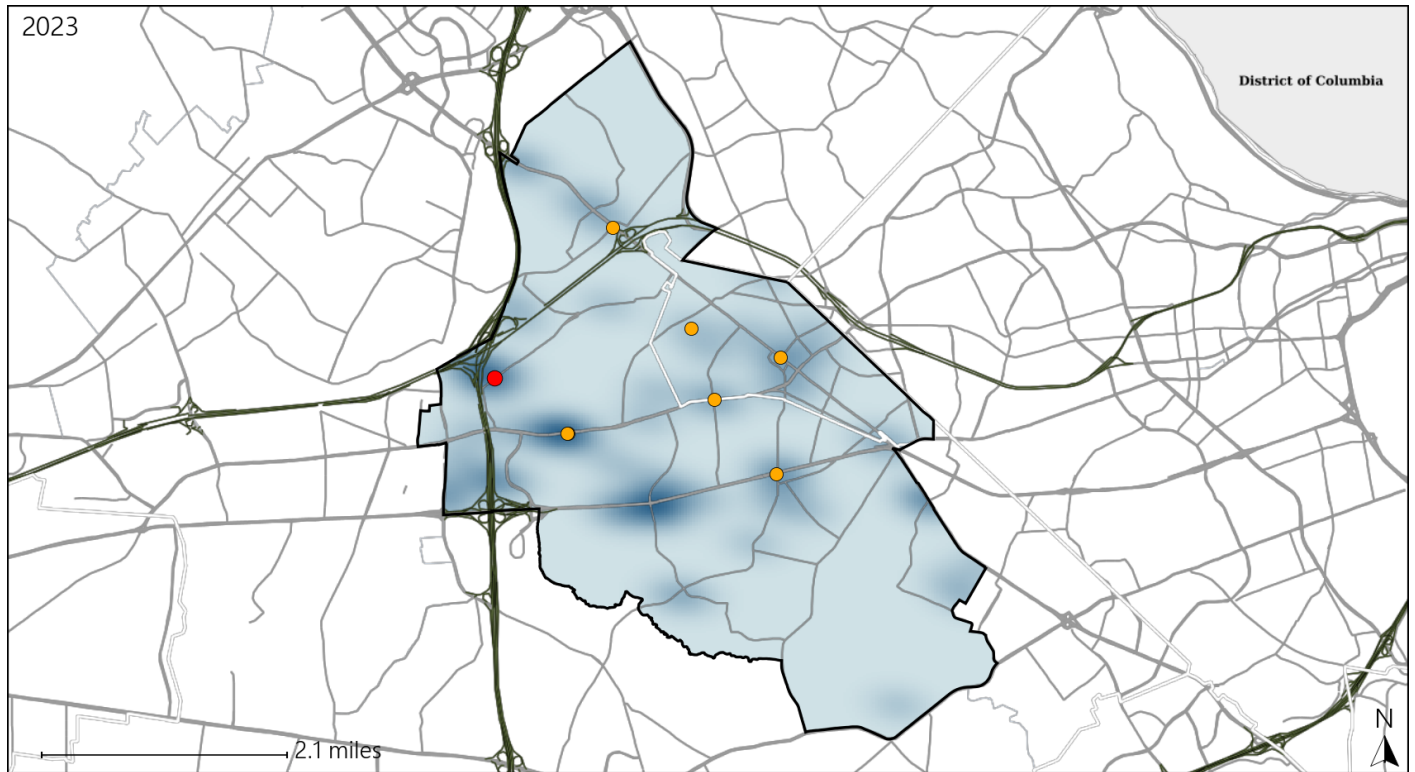


Available Crash Data - Calendar Year (CY)	CY 2020	CY 2021	CY 2022	CY 2023
Total Crashes	544	657	821	951
Fatal Crashes	0	3	2	1
Injury Crashes	184	238	276	320

Virginia House District 13 Alcohol Crash Statistics

Report Generated May, 2024

	Count	Highest Time Period(s)	Highest Day(s)	Highest Month(s)
Fatal Crashes	1	3:00am - 5:59am	Monday	November
Resulting Fatalities	1	(100%)	(100%)	(100%)
Serious Injury Crashes	7	6:00pm - 8:59pm Midnight - 2:59am	Saturday * Thursday	June
		(86%)	(58%)	(29%)



House District 13 Alcohol-Related Crashes

Interstate Crashes

Non-interstate Crashes

- Fatal
- Serious Injury

- Fatal
- Serious Injury

The blue gradient represents the density of all alcohol-related crashes.

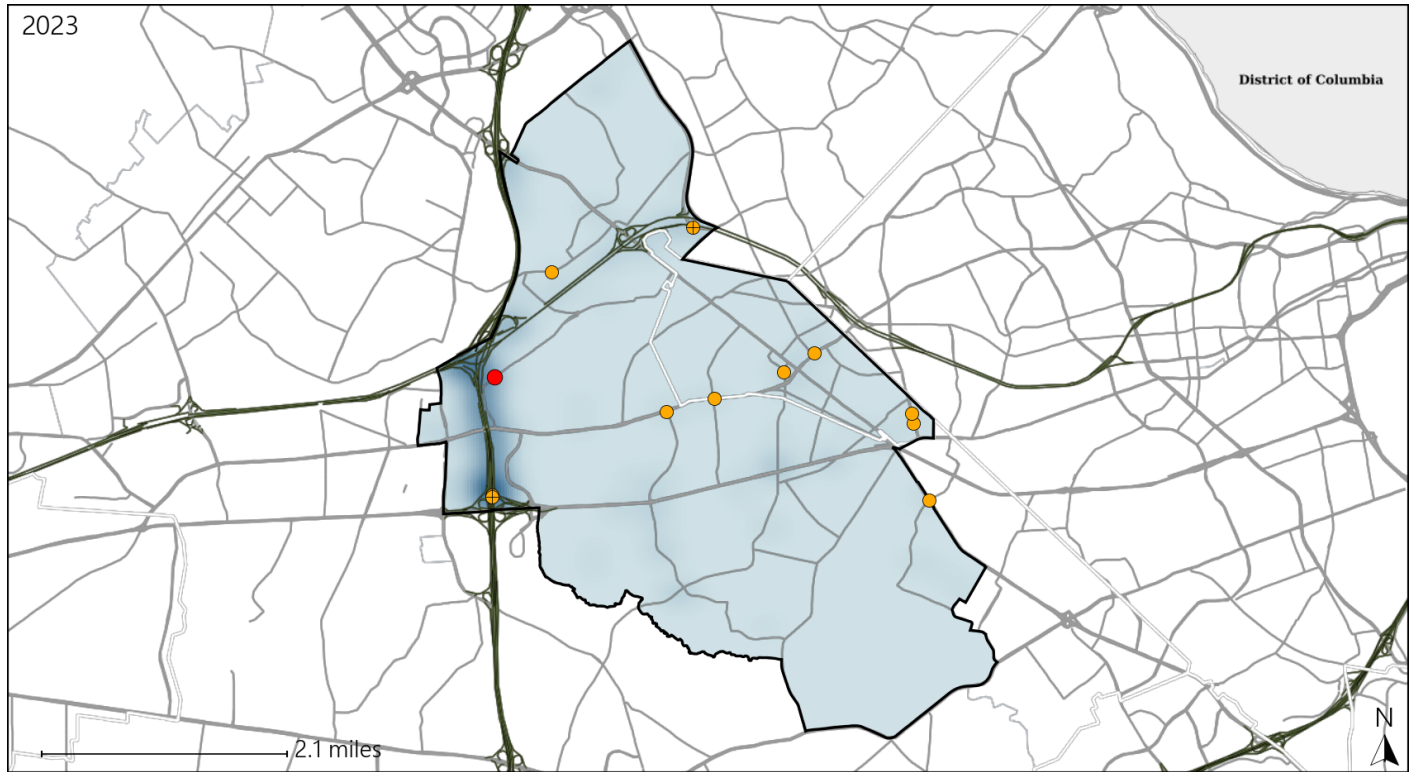


Available Crash Data - Calendar Year (CY)	CY 2020	CY 2021	CY 2022	CY 2023
Total Crashes	544	657	821	951
Fatal Crashes	0	3	2	1
Injury Crashes	184	238	276	320
Alcohol-Related Fatal Crashes	0	1	1	1
Percent of Alcohol-Related Fatal Crashes to Total Fatal Crashes	0%	33%	50%	100%
Alcohol-Related Injury Crashes	18	19	25	36
Percent of Alcohol-Related Injury Crashes to Total Injury Crashes	10%	8%	9%	11%

Virginia House District 13 Speed Crash Statistics

Report Generated May, 2024

	Count	Highest Time Period(s)	Highest Day(s)	Highest Month(s)
Fatal Crashes	1	3:00am - 5:59am	Monday	November
Resulting Fatalities	1	(100%)	(100%)	(100%)
Serious Injury Crashes	11	6:00pm - 8:59pm	Monday	October
		(27%)	(45%)	(27%)



House District 13 Speed-Related Crashes

Interstate Crashes Non-interstate Crashes
 ● Fatal ● Fatal
 ● Serious Injury ● Serious Injury

The blue gradient represents the density of all speed-related crashes.

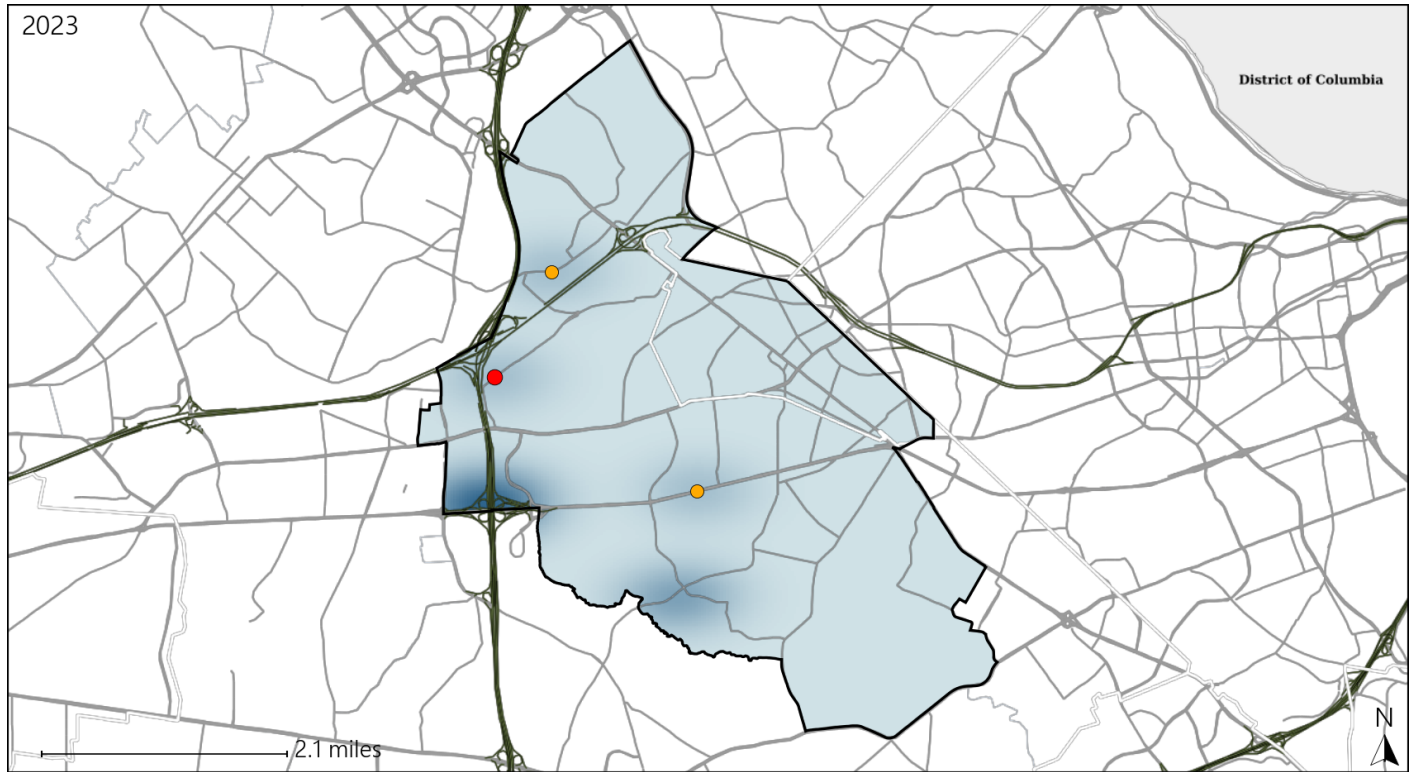


Available Crash Data - Calendar Year (CY)	CY 2020	CY 2021	CY 2022	CY 2023
Total Crashes	544	657	821	951
Fatal Crashes	0	3	2	1
Injury Crashes	184	238	276	320
Speed-Related Fatal Crashes	0	0	0	1
Percent of Speed-Related Fatal Crashes to Total Fatal Crashes	0%	0%	0%	100%
Speed-Related Injury Crashes	56	67	75	65
Percent of Speed-Related Injury Crashes to Total Injury Crashes	30%	28%	27%	20%

Virginia House District 13 Unrestrained Crash Statistics

Report Generated May, 2024

	Count	Highest Time Period(s)	Highest Day(s)	Highest Month(s)
Fatal Crashes	1	3:00am - 5:59am	Monday	November
Unrestrained Fatalities	1	(100%)	(100%)	(100%)
Serious Injury Crashes	2	Midnight - 2:59am	Monday • Sunday	July • October
		(100%)	(100%)	(100%)



House District 13 Unrestrained-Related Crashes

Interstate Crashes

- Fatal
- Serious Injury

Non-interstate Crashes

- Fatal
- Serious Injury

The blue gradient represents the density of all unrestrained-related crashes.

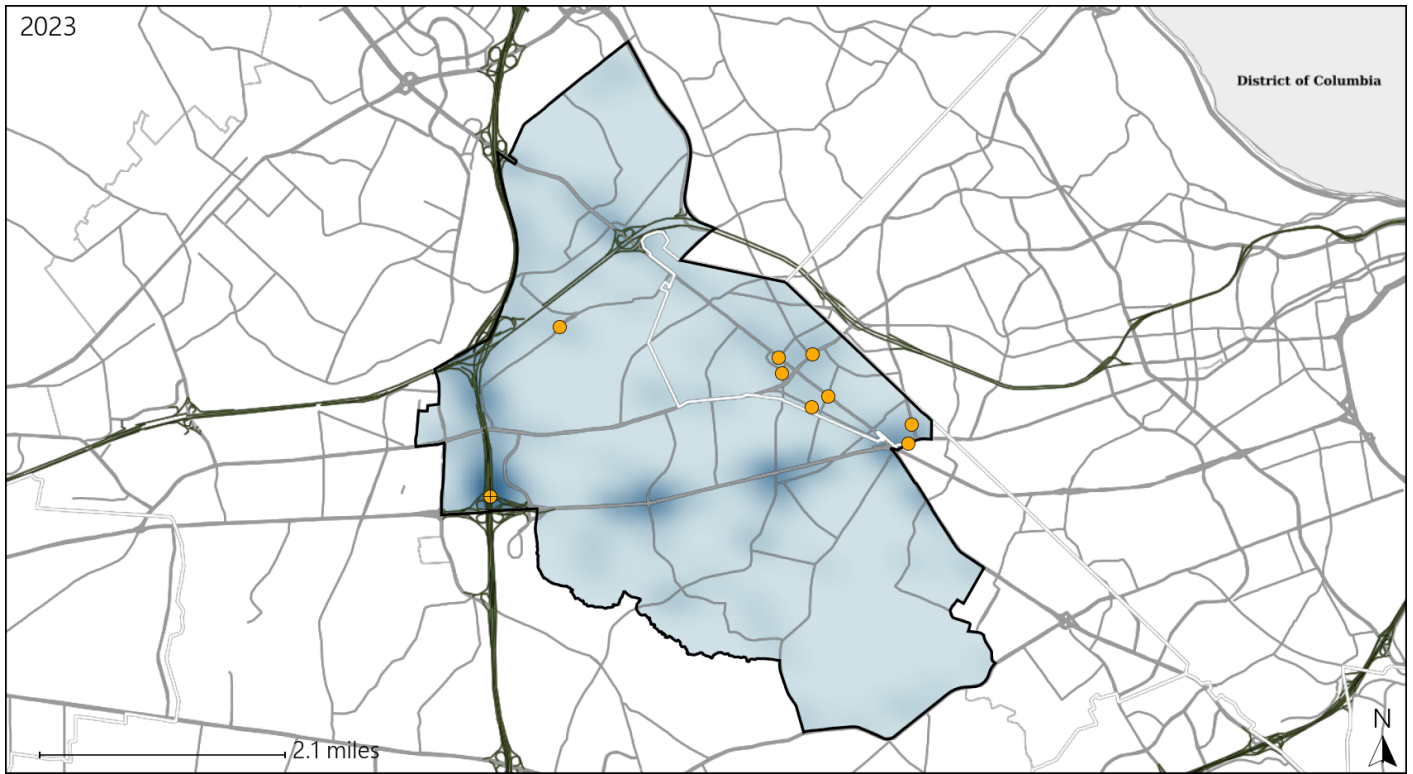


Available Crash Data - Calendar Year (CY)	CY 2020	CY 2021	CY 2022	CY 2023
Total Crashes	544	657	821	951
Fatalities	0	3	2	1
Injuries	291	406	478	573
Unrestrained Fatalities	0	0	0	1
Percent of Unrestrained Fatalities to Total Fatalities	0%	0%	0%	100%
Unrestrained Injuries	4	8	16	13
Percent of Unrestrained Injuries to Total Injuries	1%	2%	3%	2%

Virginia House District 13 Distracted Driving Crash Statistics

Report Generated May, 2024

	Count	Highest Time Period(s)	Highest Day(s)	Highest Month(s)
Fatal Crashes	0	-	-	-
Resulting Fatalities	0	-	-	-
Serious Injury Crashes	9	6:00am - 8:59am 6:00pm - 8:59pm (44%)	Monday (44%)	June • May (44%)



House District 13 Distracted Driving-Related Crashes

- | | |
|--------------------|------------------------|
| Interstate Crashes | Non-interstate Crashes |
| ● Fatal | ● Fatal |
| ⊕ Serious Injury | ● Serious Injury |

The blue gradient represents the density of all distracted driving-related crashes.



Available Crash Data - Calendar Year (CY)	CY 2020	CY 2021	CY 2022	CY 2023
Total Crashes	544	657	821	951
Fatal Crashes	0	3	2	1
Injury Crashes	184	238	276	320
Distracted Driving-Related Fatal Crashes	0	1	0	0
Percent of Distracted Driving-Related Fatal Crashes to Total Fatal Crashes	0%	33%	0%	0%
Distracted Driving-Related Injury Crashes	42	52	56	58
Percent of Distracted Driving-Related Injury Crashes to Total Injury Crashes	23%	22%	20%	18%