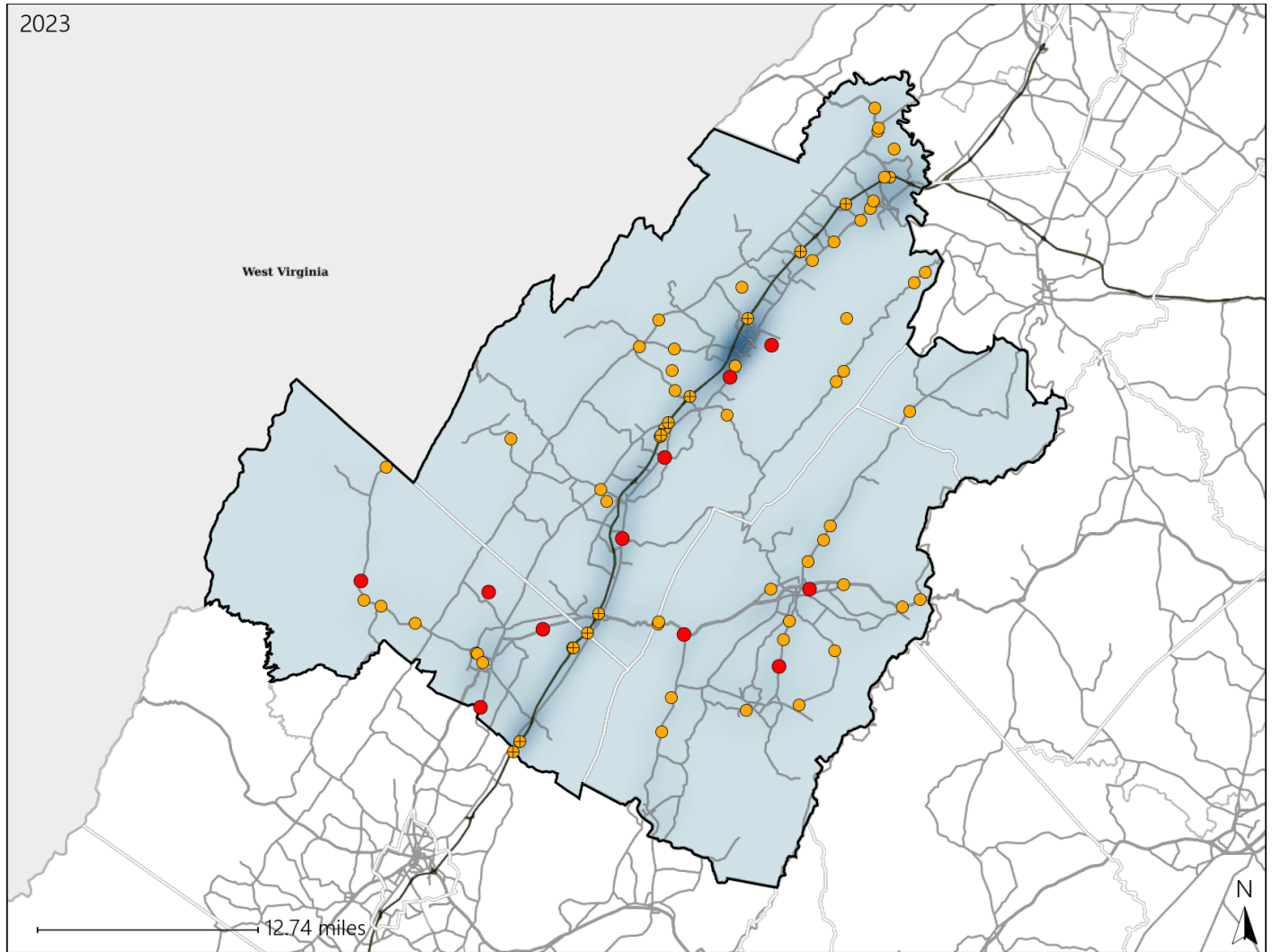


Virginia House District 33 Crash Statistics

Report Generated May, 2024

	Count	Highest Time Period(s)	Highest Day(s)	Highest Month(s)
Fatal Crashes	11	3:00pm - 5:59pm	Monday • Saturday	March
Resulting Fatalities	12	(36%)	(36%)	(27%)
Serious Injury Crashes	66	Noon - 2:59pm	Saturday	June
		(24%)	(20%)	(17%)



House District 33 Crashes

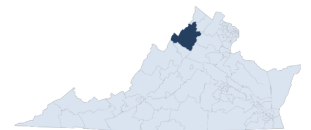
Interstate Crashes

- Fatal
- Serious Injury

Non-interstate Crashes

- Fatal
- Serious Injury

The blue gradient represents the density of all crashes.

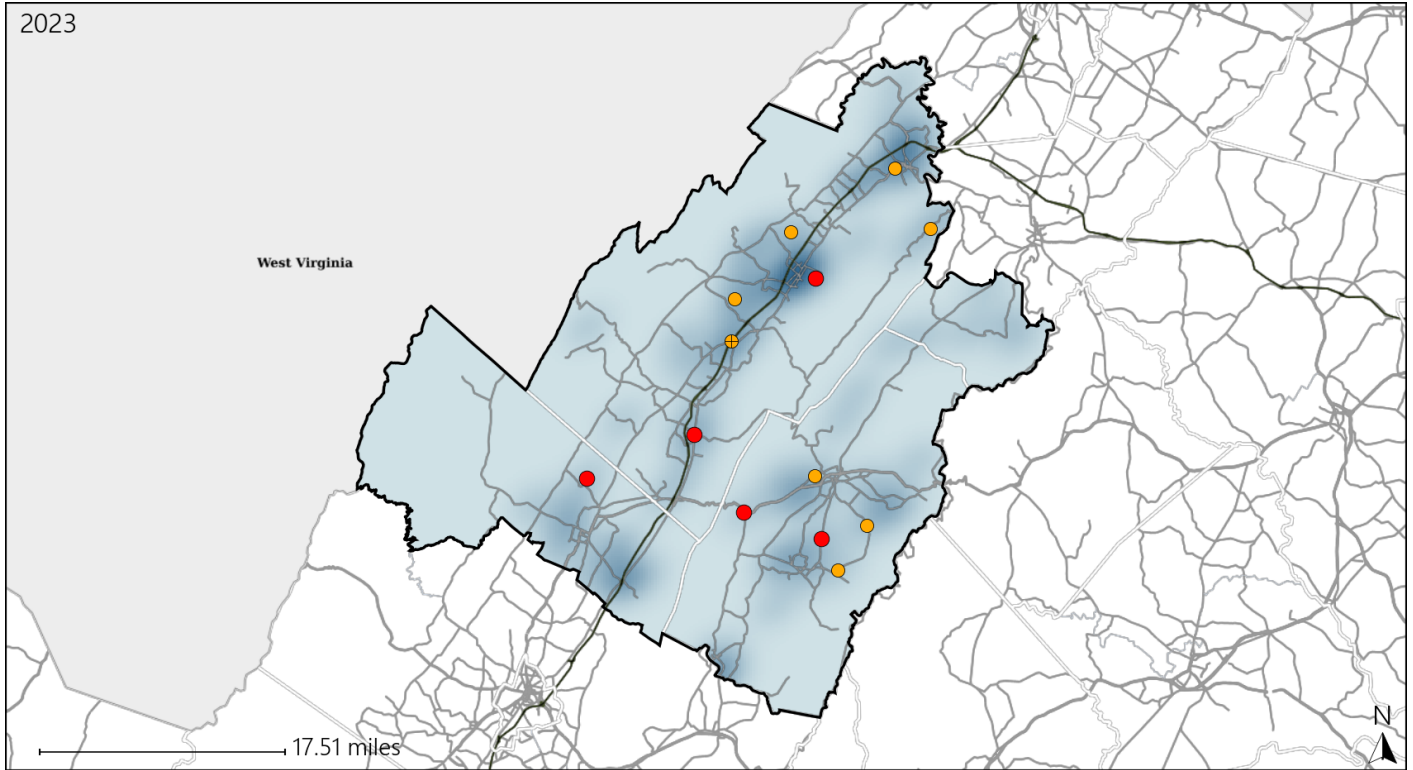


Available Crash Data - Calendar Year (CY)	CY 2020	CY 2021	CY 2022	CY 2023
Total Crashes	1004	1209	1271	1264
Fatal Crashes	16	11	22	11
Injury Crashes	257	325	337	342

Virginia House District 33 Alcohol Crash Statistics

Report Generated May, 2024

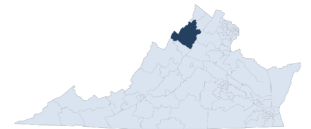
	Count	Highest Time Period(s)	Highest Day(s)	Highest Month(s)
Fatal Crashes	5	9:00pm - 11:59pm	Saturday	April • August
Resulting Fatalities	5	(40%)	(40%)	(40%)
Serious Injury Crashes	8	3:00pm - 5:59pm	Friday • Saturday	September
		(38%)	(50%)	(25%)



House District 33 Alcohol-Related Crashes

Interstate Crashes Non-interstate Crashes
 ● Fatal ● Fatal
 ⊕ Serious Injury ⊕ Serious Injury

The blue gradient represents the density of all alcohol-related crashes.

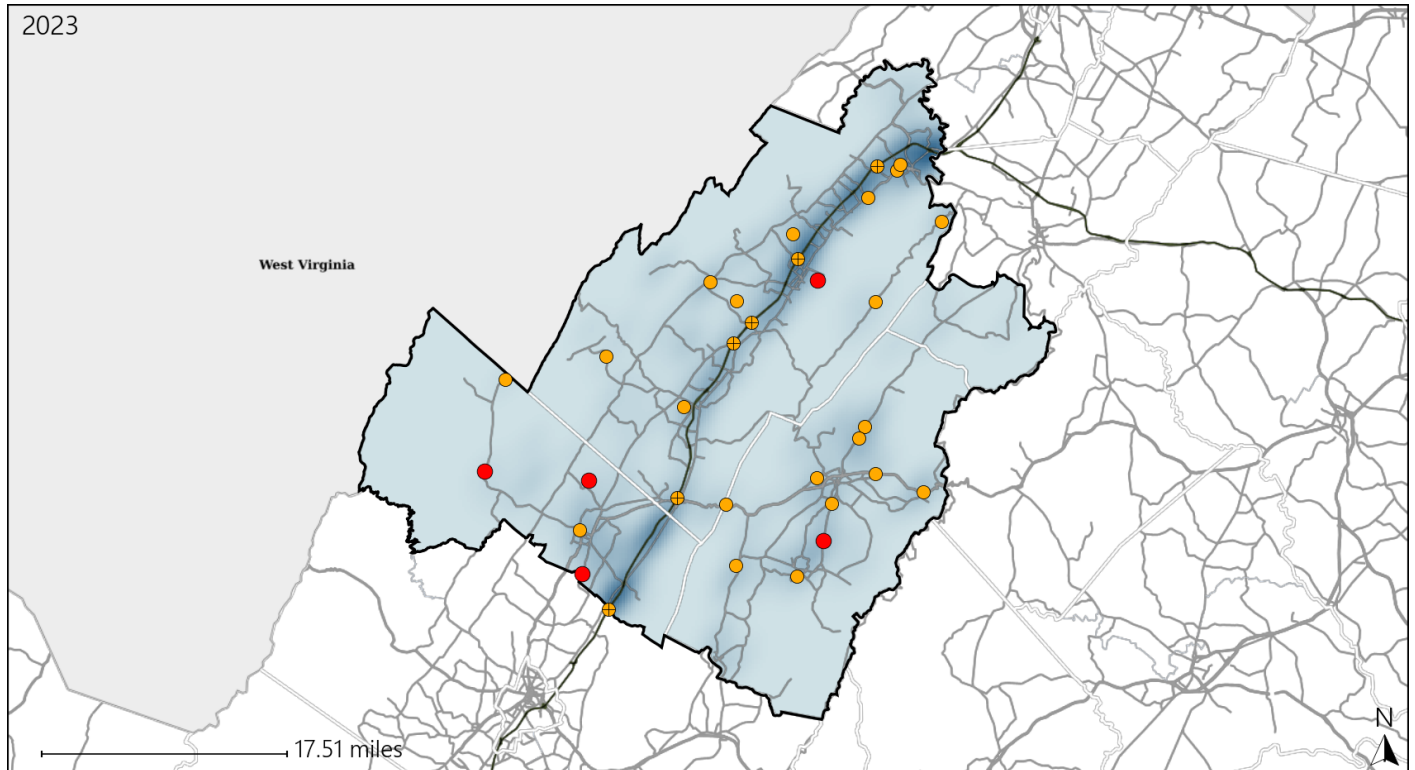


Available Crash Data - Calendar Year (CY)	CY 2020	CY 2021	CY 2022	CY 2023
Total Crashes	1004	1209	1271	1264
Fatal Crashes	16	11	22	11
Injury Crashes	257	325	337	342
Alcohol-Related Fatal Crashes	6	5	7	5
Percent of Alcohol-Related Fatal Crashes to Total Fatal Crashes	38%	45%	32%	45%
Alcohol-Related Injury Crashes	29	21	25	32
Percent of Alcohol-Related Injury Crashes to Total Injury Crashes	11%	6%	7%	9%

Virginia House District 33 Speed Crash Statistics

Report Generated May, 2024

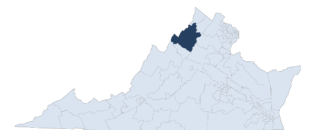
	Count	Highest Time Period(s)	Highest Day(s)	Highest Month(s)
Fatal Crashes	5	9:00pm - 11:59pm	Saturday	March
Resulting Fatalities	5	(40%)	(40%)	(40%)
Serious Injury Crashes	27	3:00pm - 5:59pm	Friday	August • June
		(26%)	(22%)	(30%)



House District 33 Speed-Related Crashes

Interstate Crashes Non-interstate Crashes
 ● Fatal ● Fatal
 ⊕ Serious Injury ⊕ Serious Injury

The blue gradient represents the density of all speed-related crashes.

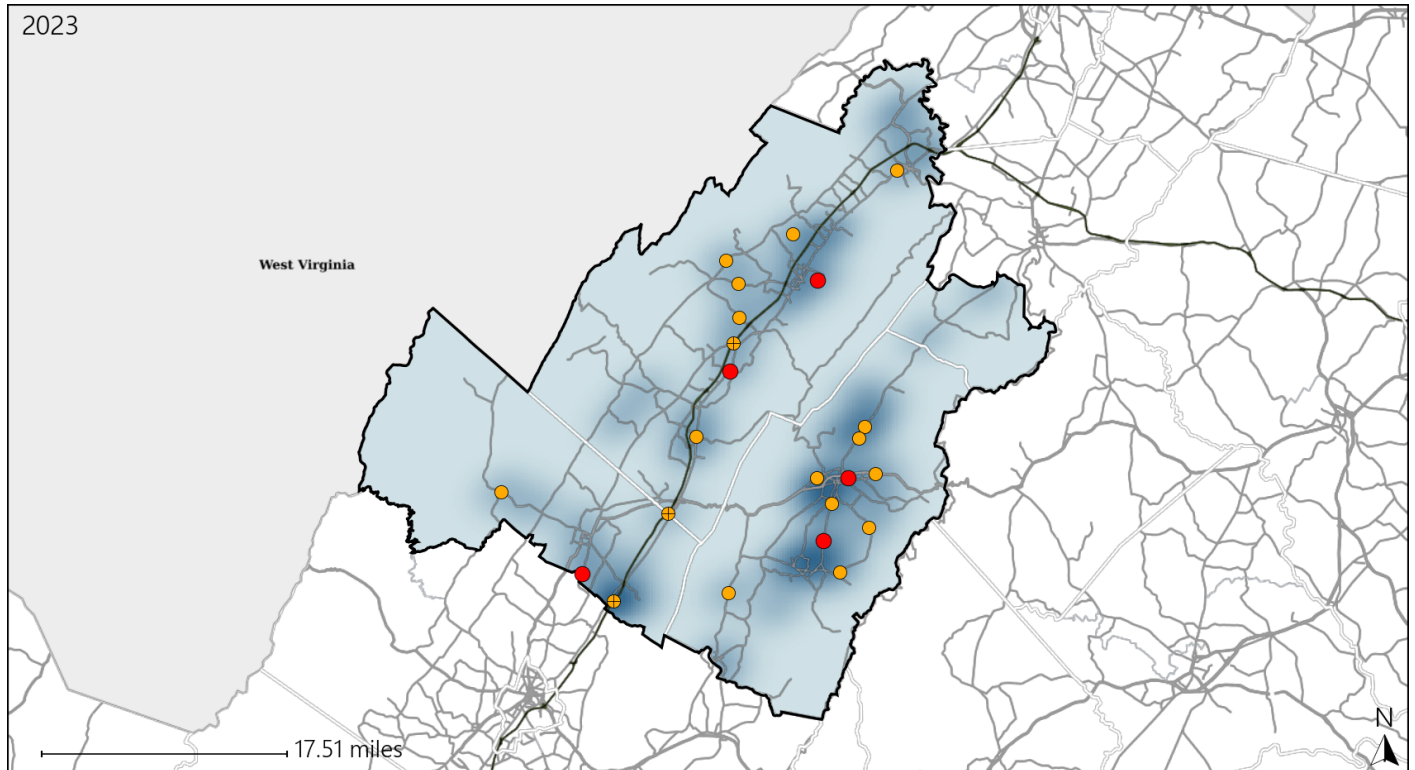


Available Crash Data - Calendar Year (CY)	CY 2020	CY 2021	CY 2022	CY 2023
Total Crashes	1004	1209	1271	1264
Fatal Crashes	16	11	22	11
Injury Crashes	257	325	337	342
Speed-Related Fatal Crashes	11	5	8	5
Percent of Speed-Related Fatal Crashes to Total Fatal Crashes	69%	45%	36%	45%
Speed-Related Injury Crashes	98	103	106	102
Percent of Speed-Related Injury Crashes to Total Injury Crashes	38%	32%	31%	30%

Virginia House District 33 Unrestrained Crash Statistics

Report Generated May, 2024

	Count	Highest Time Period(s)	Highest Day(s)	Highest Month(s)
Fatal Crashes	5	9:00pm - 11:59pm	Saturday	April • December
Unrestrained Fatalities	5	(40%)	(40%)	(40%)
Serious Injury Crashes	18	Noon - 2:59pm	Sunday	August • May
		(33%)	(33%)	(34%)



House District 33 Unrestrained-Related Crashes

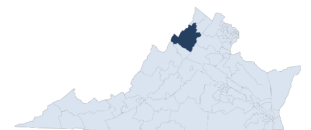
Interstate Crashes

Non-interstate Crashes

- Fatal
- Serious Injury

- Fatal
- Serious Injury

The blue gradient represents the density of all unrestrained-related crashes.

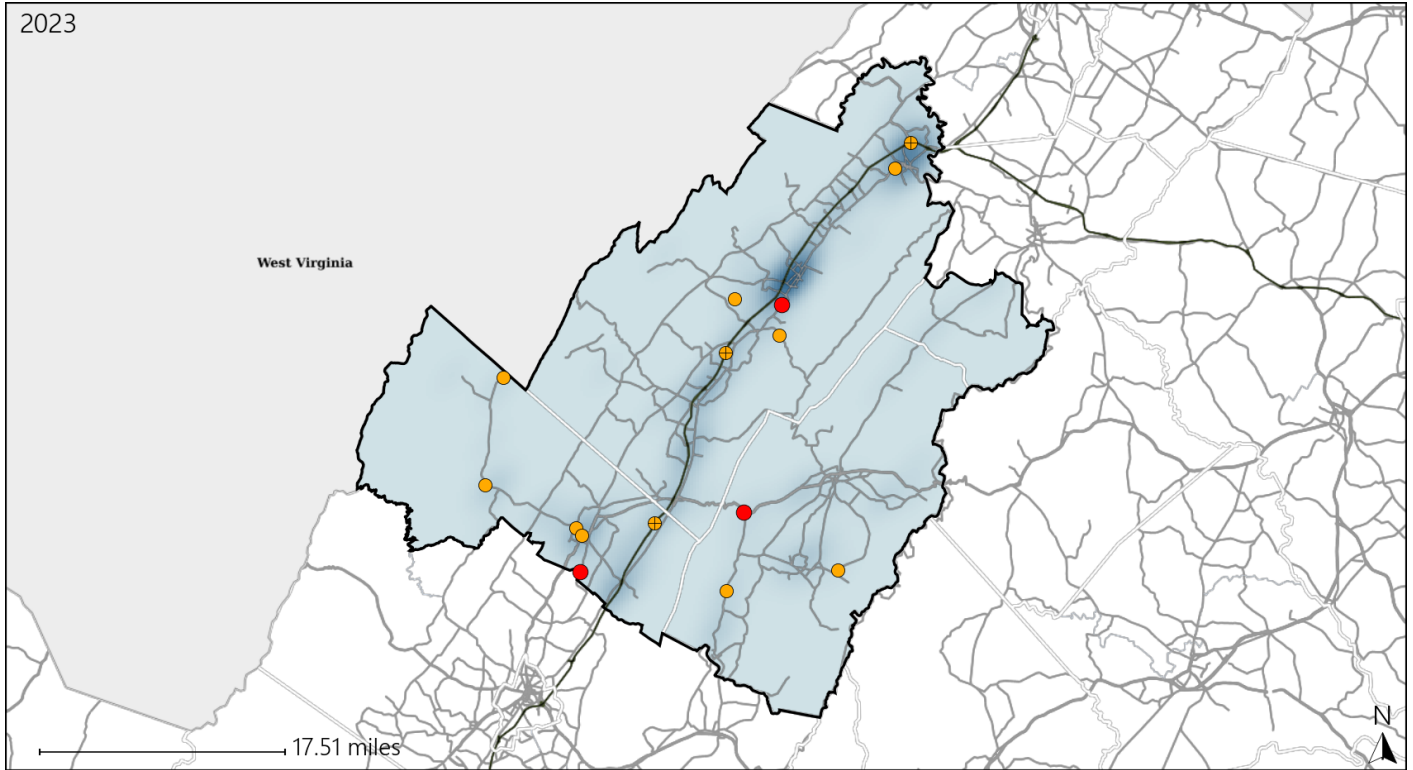


Available Crash Data - Calendar Year (CY)	CY 2020	CY 2021	CY 2022	CY 2023
Total Crashes	1004	1209	1271	1264
Fatalities	18	11	23	12
Injuries	375	436	487	497
Unrestrained Fatalities	10	4	12	5
Percent of Unrestrained Fatalities to Total Fatalities	56%	36%	52%	42%
Unrestrained Injuries	60	63	71	69
Percent of Unrestrained Injuries to Total Injuries	16%	14%	15%	14%

Virginia House District 33 Distracted Driving Crash Statistics

Report Generated May, 2024

	Count	Highest Time Period(s)	Highest Day(s)	Highest Month(s)
Fatal Crashes	3	9:00am - 11:59am	Tuesday	August • December
Resulting Fatalities	3	(67%)	(67%)	(66%)
Serious Injury Crashes	12	Noon - 2:59pm	Saturday	May
		(33%)	(25%)	(25%)



House District 33 Distracted Driving-Related Crashes

- | | |
|--------------------|------------------------|
| Interstate Crashes | Non-interstate Crashes |
| Fatal | Fatal |
| Serious Injury | Serious Injury |

The blue gradient represents the density of all distracted driving-related crashes.



Available Crash Data - Calendar Year (CY)	CY 2020	CY 2021	CY 2022	CY 2023
Total Crashes	1004	1209	1271	1264
Fatal Crashes	16	11	22	11
Injury Crashes	257	325	337	342
Distracted Driving-Related Fatal Crashes	4	1	1	3
Percent of Distracted Driving-Related Fatal Crashes to Total Fatal Crashes	25%	9%	5%	27%
Distracted Driving-Related Injury Crashes	57	71	74	65
Percent of Distracted Driving-Related Injury Crashes to Total Injury Crashes	22%	22%	22%	19%