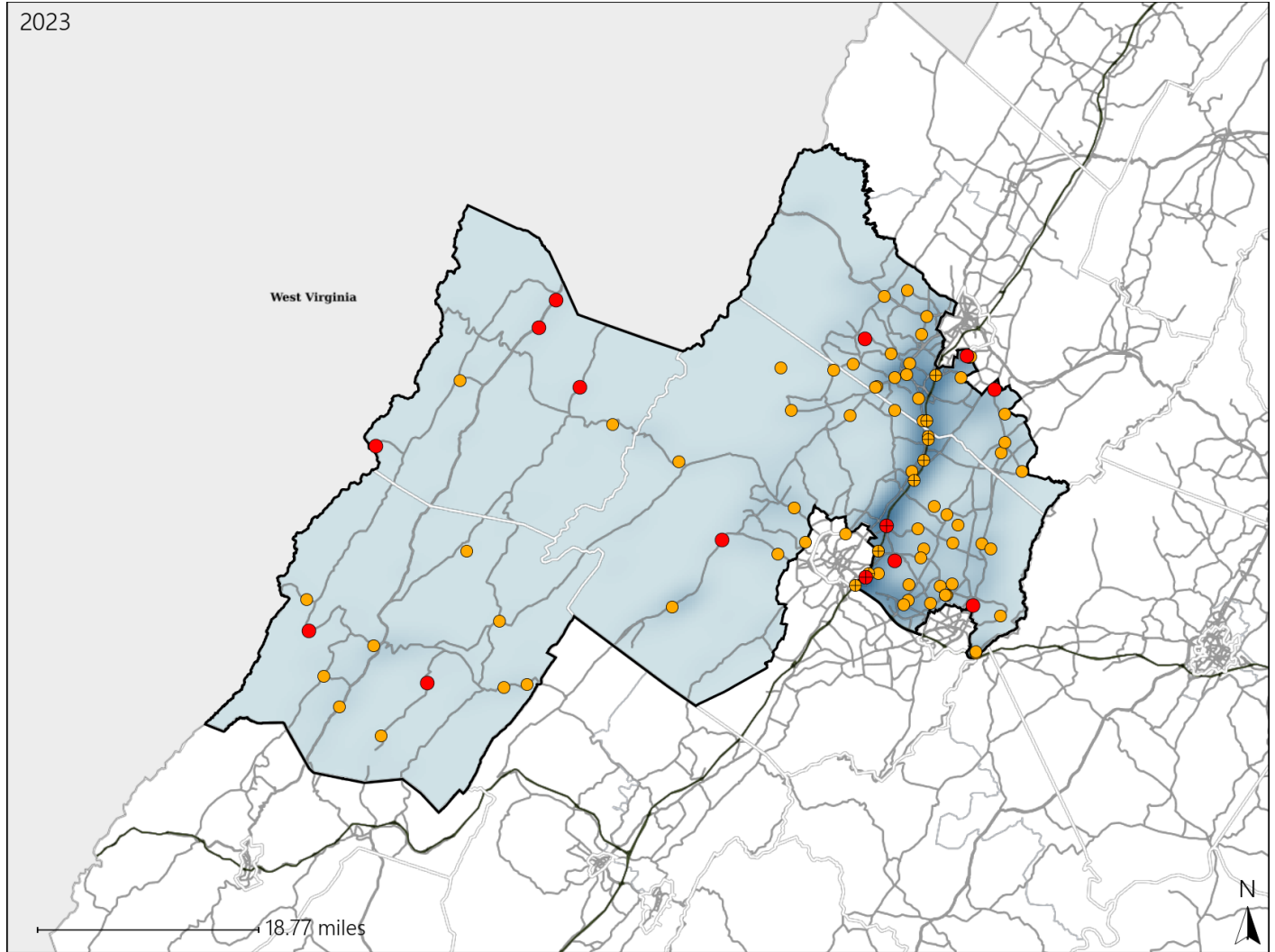


# Virginia House District 35 Crash Statistics

Report Generated May, 2024

	Count	Highest Time Period(s)	Highest Day(s)	Highest Month(s)
<b>Fatal Crashes</b>	<b>14</b>	<b>3:00pm - 5:59pm</b>	<b>Tuesday</b>	<b>January • September</b>
<b>Resulting Fatalities</b>	<b>15</b>	(29%)	(29%)	(42%)
<b>Serious Injury Crashes</b>	<b>76</b>	<b>6:00pm - 8:59pm</b>	<b>Saturday</b>	<b>October</b>
		(20%)	(28%)	(16%)



### House District 35 Crashes

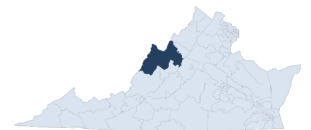
Interstate Crashes

- Fatal
- Serious Injury

Non-interstate Crashes

- Fatal
- Serious Injury

The blue gradient represents the density of all crashes.

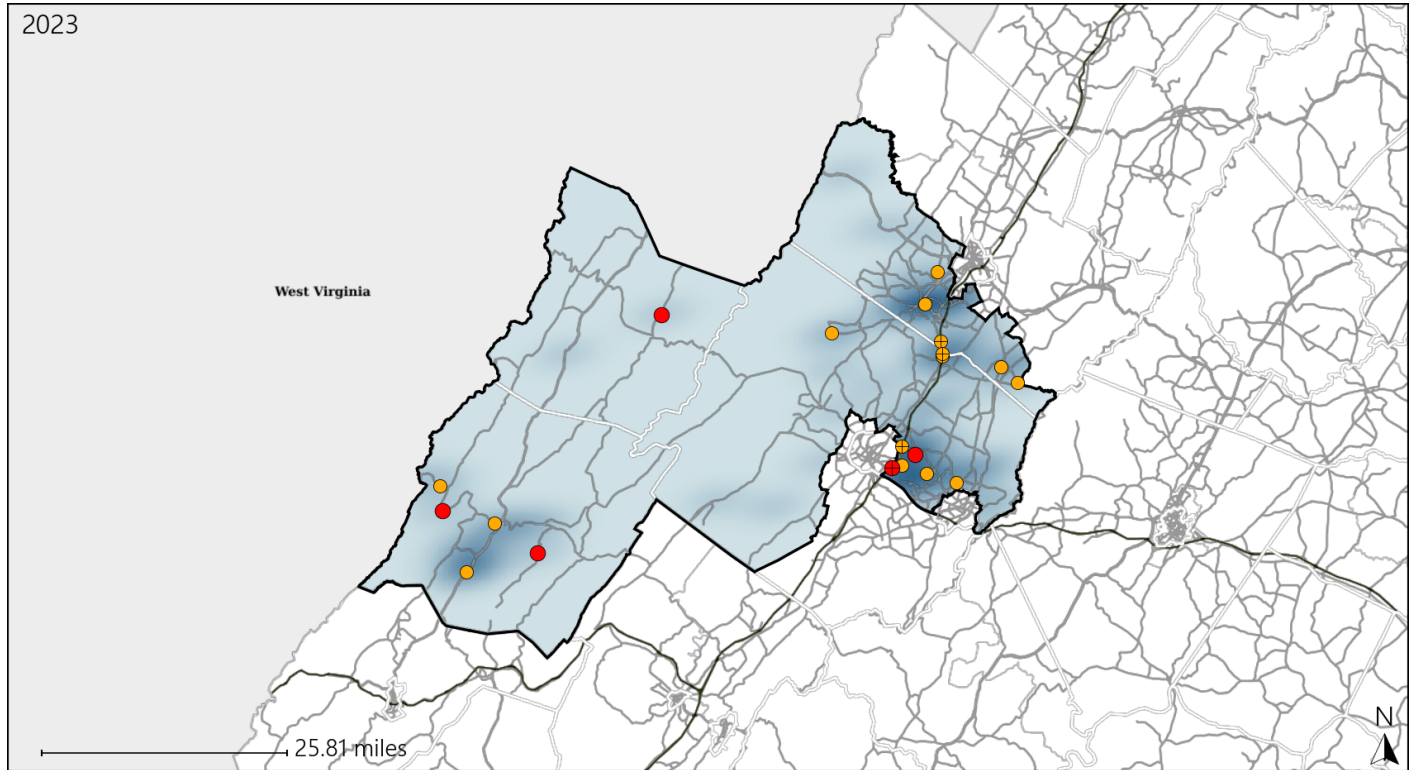


Available Crash Data - Calendar Year (CY)	CY 2020	CY 2021	CY 2022	CY 2023
Total Crashes	1031	1119	1243	1348
Fatal Crashes	12	11	19	14
Injury Crashes	329	327	362	383

# Virginia House District 35 Alcohol Crash Statistics

Report Generated May, 2024

	Count	Highest Time Period(s)	Highest Day(s)	Highest Month(s)
<b>Fatal Crashes</b>	<b>5</b>	Midnight - 2:59am	Saturday	January • May
<b>Resulting Fatalities</b>	<b>6</b>	Noon - 2:59pm (80%)	(60%)	(80%)
<b>Serious Injury Crashes</b>	<b>15</b>	9:00pm - 11:59pm (40%)	Saturday (47%)	May (20%)



## House District 35 Alcohol-Related Crashes

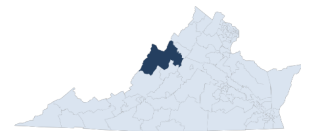
Interstate Crashes

Non-interstate Crashes

- Fatal
- Serious Injury

- Fatal
- Serious Injury

The blue gradient represents the density of all alcohol-related crashes.

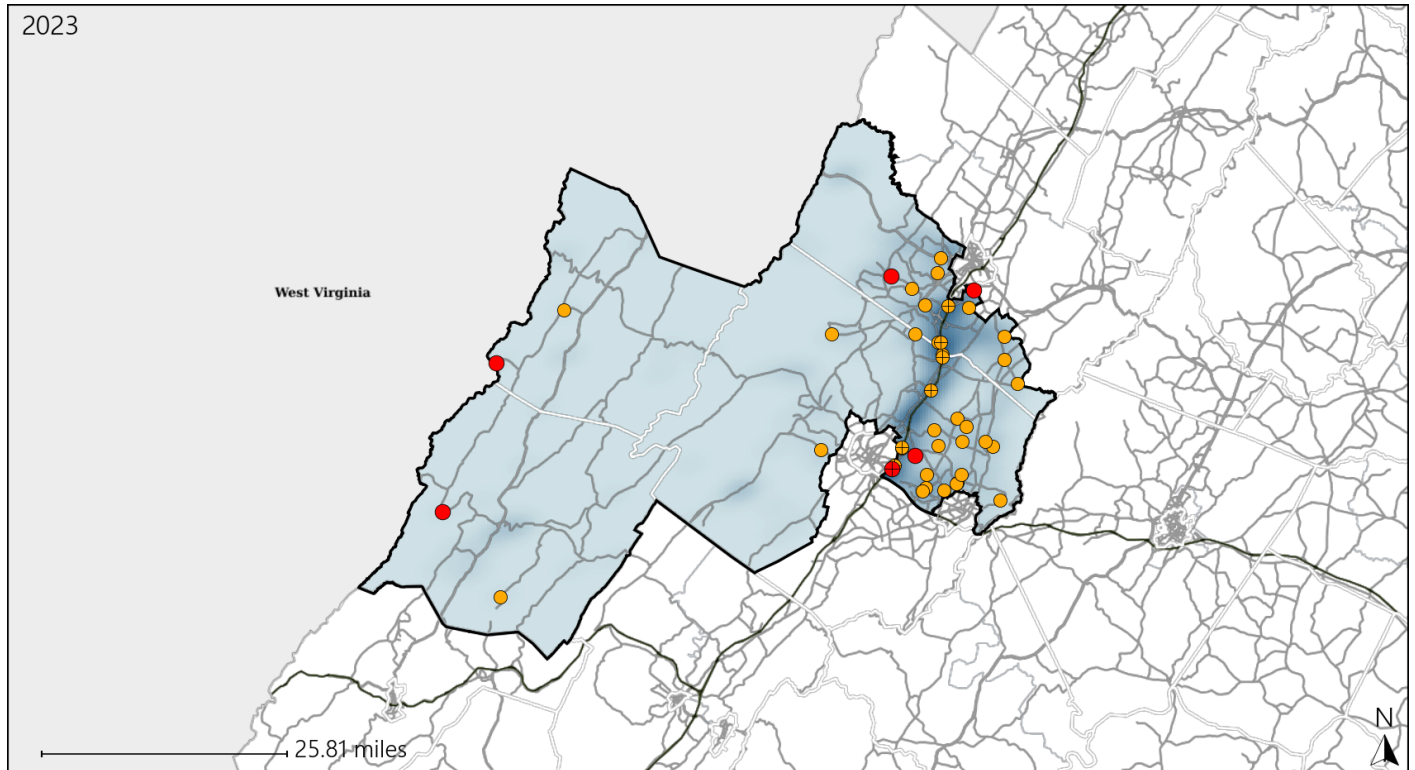


Available Crash Data - Calendar Year (CY)	CY 2020	CY 2021	CY 2022	CY 2023
Total Crashes	1031	1119	1243	1348
Fatal Crashes	12	11	19	14
Injury Crashes	329	327	362	383
Alcohol-Related Fatal Crashes	4	3	2	5
Percent of Alcohol-Related Fatal Crashes to Total Fatal Crashes	33%	27%	11%	36%
Alcohol-Related Injury Crashes	42	34	35	31
Percent of Alcohol-Related Injury Crashes to Total Injury Crashes	13%	10%	10%	8%

# Virginia House District 35 Speed Crash Statistics

Report Generated May, 2024

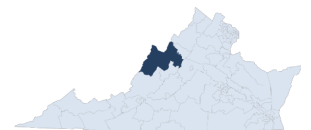
	Count	Highest Time Period(s)	Highest Day(s)	Highest Month(s)
<b>Fatal Crashes</b>	<b>6</b>	<b>Noon - 2:59pm</b>	<b>Monday • Saturday</b>	<b>April • January</b>
<b>Resulting Fatalities</b>	<b>7</b>	(33%)	(66%)	(66%)
<b>Serious Injury Crashes</b>	<b>37</b>	<b>3:00pm - 5:59pm</b>	<b>Friday</b>	<b>July</b>
		(24%)	(27%)	(16%)



## House District 35 Speed-Related Crashes

Interstate Crashes                      Non-interstate Crashes  
 ● Fatal                                      ● Fatal  
 ● Serious Injury                          ● Serious Injury

The blue gradient represents the density of all speed-related crashes.

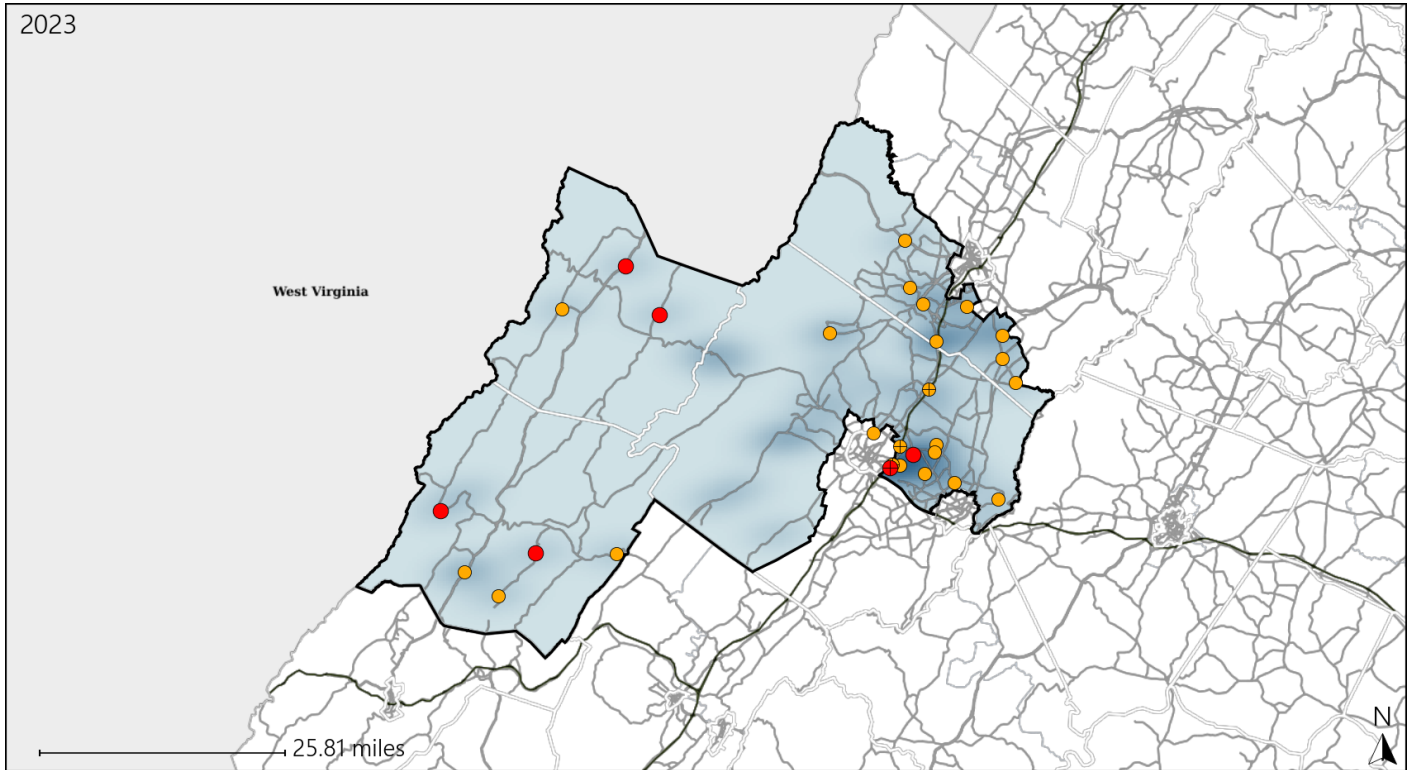


Available Crash Data - Calendar Year (CY)	CY 2020	CY 2021	CY 2022	CY 2023
Total Crashes	1031	1119	1243	1348
Fatal Crashes	12	11	19	14
Injury Crashes	329	327	362	383
Speed-Related Fatal Crashes	4	5	5	6
Percent of Speed-Related Fatal Crashes to Total Fatal Crashes	33%	45%	26%	43%
Speed-Related Injury Crashes	98	97	110	138
Percent of Speed-Related Injury Crashes to Total Injury Crashes	30%	30%	30%	36%

# Virginia House District 35 Unrestrained Crash Statistics

Report Generated May, 2024

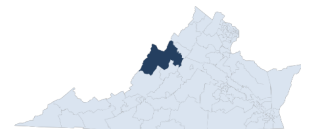
	Count	Highest Time Period(s)	Highest Day(s)	Highest Month(s)
<b>Fatal Crashes</b>	<b>6</b>	<b>Midnight - 2:59am</b>	<b>Saturday</b>	<b>January</b>
<b>Unrestrained Fatalities</b>	<b>6</b>	<b>Noon - 2:59pm</b> (66%)	<b>(50%)</b>	<b>(50%)</b>
<b>Serious Injury Crashes</b>	<b>23</b>	<b>3:00pm - 5:59pm</b> (22%)	<b>Friday</b> (26%)	<b>August • December</b> (34%)



## House District 35 Unrestrained-Related Crashes

- |  |  |
|--|--|
| Interstate Crashes                                   | Non-interstate Crashes                               |
| <span style="color: red;">●</span> Fatal             | <span style="color: red;">●</span> Fatal             |
| <span style="color: orange;">●</span> Serious Injury | <span style="color: orange;">●</span> Serious Injury |

The blue gradient represents the density of all unrestrained-related crashes.



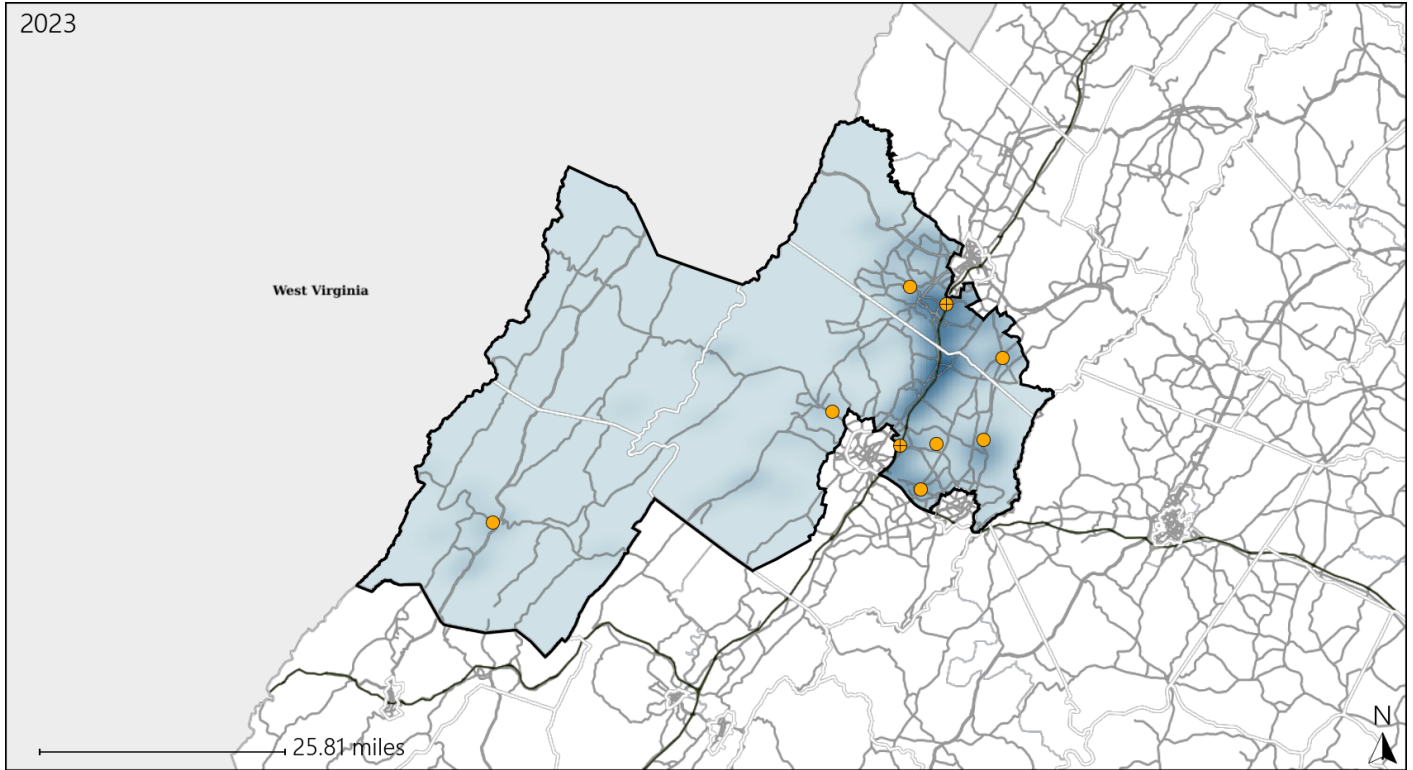
Available Crash Data - Calendar Year (CY)	CY 2020	CY 2021	CY 2022	CY 2023
<b>Total Crashes</b>	<b>1031</b>	<b>1119</b>	<b>1243</b>	<b>1348</b>
<b>Fatalities</b>	<b>14</b>	<b>12</b>	<b>19</b>	<b>15</b>
<b>Injuries</b>	<b>470</b>	<b>469</b>	<b>501</b>	<b>557</b>
<b>Unrestrained Fatalities</b>	<b>6</b>	<b>5</b>	<b>7</b>	<b>6</b>
<b>Percent of Unrestrained Fatalities to Total Fatalities</b>	<b>43%</b>	<b>42%</b>	<b>37%</b>	<b>40%</b>
<b>Unrestrained Injuries</b>	<b>52</b>	<b>52</b>	<b>60</b>	<b>65</b>
<b>Percent of Unrestrained Injuries to Total Injuries</b>	<b>11%</b>	<b>11%</b>	<b>12%</b>	<b>12%</b>



# Virginia House District 35 Distracted Driving Crash Statistics

Report Generated May, 2024

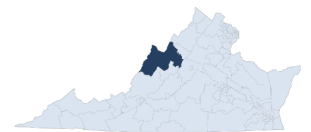
	Count	Highest Time Period(s)	Highest Day(s)	Highest Month(s)
<b>Fatal Crashes</b>	<b>0</b>	-	-	-
<b>Resulting Fatalities</b>	<b>0</b>	-	-	-
<b>Serious Injury Crashes</b>	<b>9</b>	<b>6:00am - 8:59am</b> (44%)	<b>Friday • Tuesday</b> (44%)	<b>July • November</b> (44%)



## House District 35 Distracted Driving-Related Crashes

- |                    |                        |
|--------------------|------------------------|
| Interstate Crashes | Non-interstate Crashes |
| Fatal              | Fatal                  |
| Serious Injury     | Serious Injury         |

The blue gradient represents the density of all distracted driving-related crashes.



Available Crash Data - Calendar Year (CY)	CY 2020	CY 2021	CY 2022	CY 2023
Total Crashes	1031	1119	1243	1348
Fatal Crashes	12	11	19	14
Injury Crashes	329	327	362	383
Distracted Driving-Related Fatal Crashes	0	3	2	0
Percent of Distracted Driving-Related Fatal Crashes to Total Fatal Crashes	0%	27%	11%	0%
Distracted Driving-Related Injury Crashes	57	60	63	64
Percent of Distracted Driving-Related Injury Crashes to Total Injury Crashes	17%	18%	17%	17%