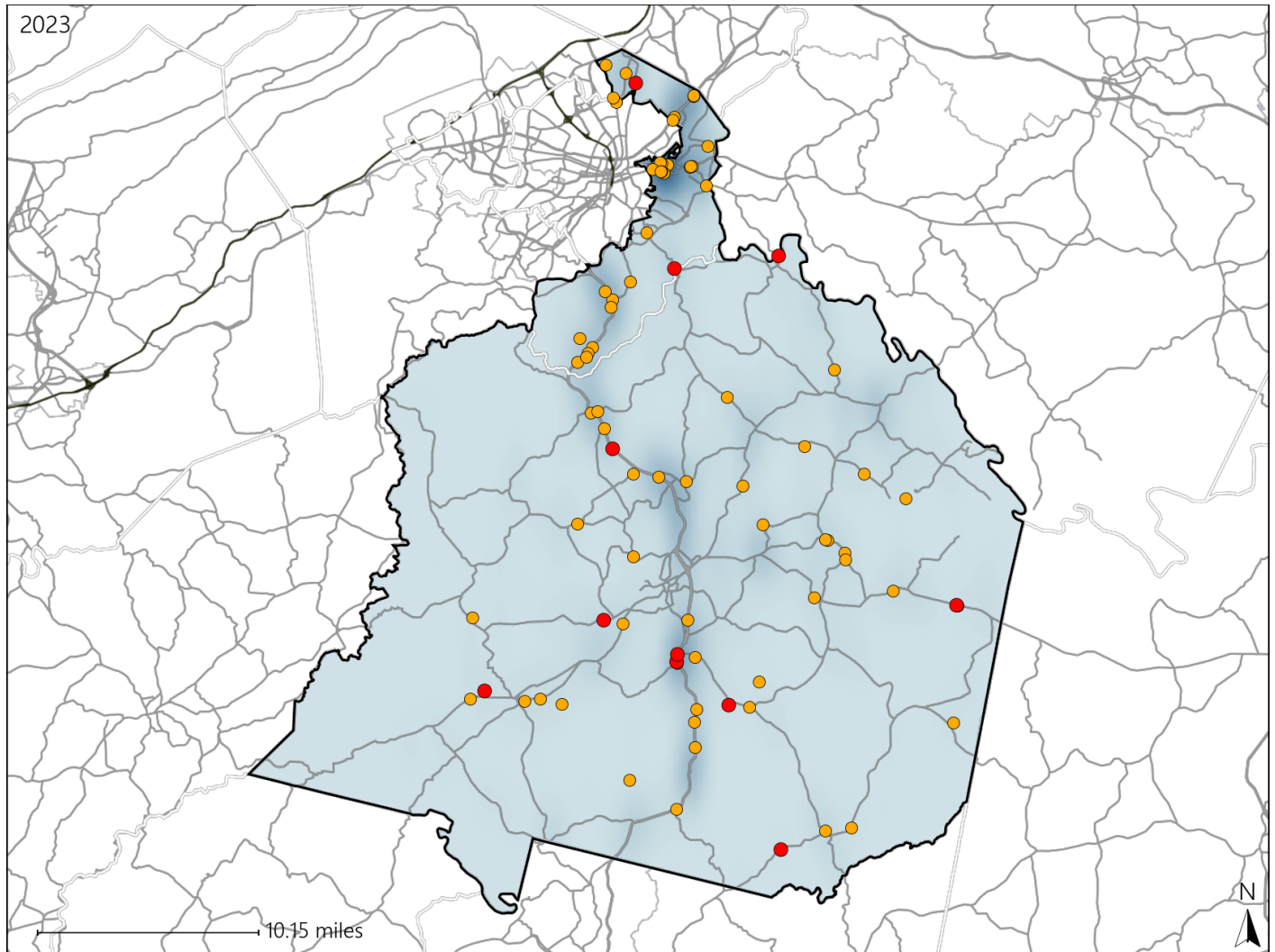


Virginia House District 39 Crash Statistics

Report Generated May, 2024

	Count	Highest Time Period(s)	Highest Day(s)	Highest Month(s)
Fatal Crashes	11	6:00pm - 8:59pm	Monday	May
Resulting Fatalities	12	(27%)	(27%)	(27%)
Serious Injury Crashes	73	3:00pm - 5:59pm 6:00pm - 8:59pm	Thursday	May
		(42%)	(22%)	(16%)



House District 39 Crashes

Interstate Crashes

- Fatal
- Serious Injury

Non-interstate Crashes

- Fatal
- Serious Injury

The blue gradient represents the density of all crashes.

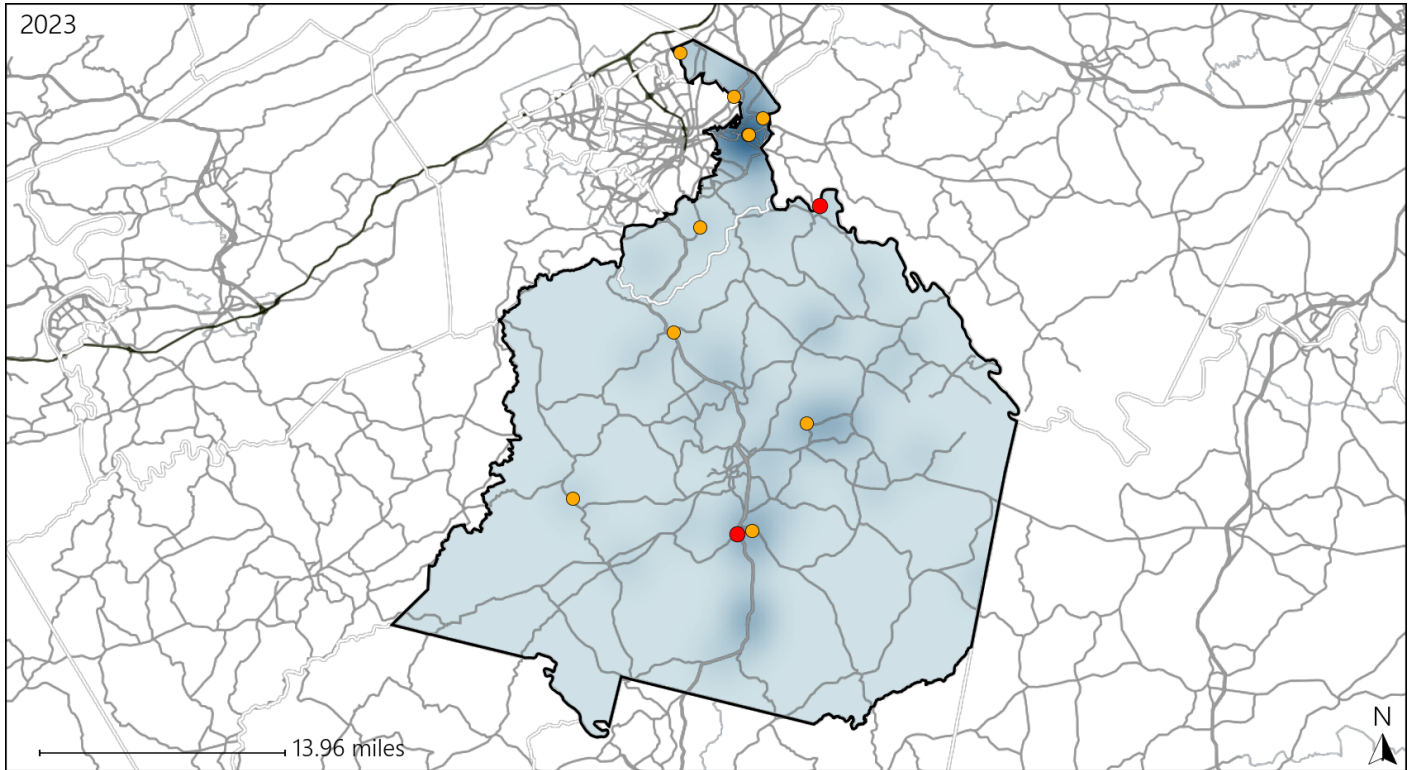


Available Crash Data - Calendar Year (CY)	CY 2020	CY 2021	CY 2022	CY 2023
Total Crashes	1237	1266	1223	1190
Fatal Crashes	8	12	17	11
Injury Crashes	420	393	400	386

Virginia House District 39 Alcohol Crash Statistics

Report Generated May, 2024

	Count	Highest Time Period(s)	Highest Day(s)	Highest Month(s)
Fatal Crashes	2	6:00pm - 8:59pm	Monday • Sunday	April • October
Resulting Fatalities	3	9:00am - 11:59am (100%)	(100%)	(100%)
Serious Injury Crashes	10	6:00pm - 8:59pm (40%)	Sunday (40%)	August (30%)



House District 39 Alcohol-Related Crashes

Interstate Crashes

- Fatal
- Serious Injury

Non-interstate Crashes

- Fatal
- Serious Injury

The blue gradient represents the density of all alcohol-related crashes.

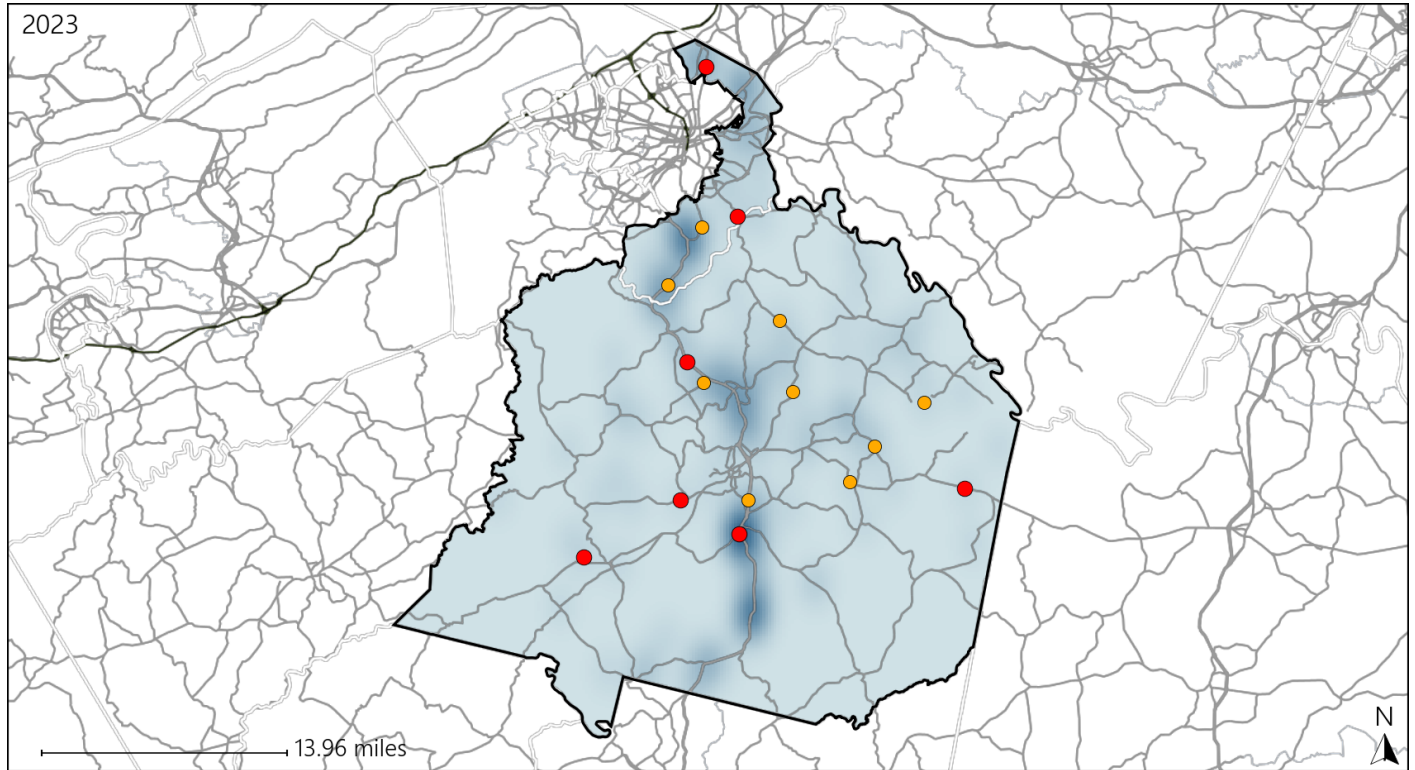


Available Crash Data - Calendar Year (CY)	CY 2020	CY 2021	CY 2022	CY 2023
Total Crashes	1237	1266	1223	1190
Fatal Crashes	8	12	17	11
Injury Crashes	420	393	400	386
Alcohol-Related Fatal Crashes	1	3	5	2
Percent of Alcohol-Related Fatal Crashes to Total Fatal Crashes	13%	25%	29%	18%
Alcohol-Related Injury Crashes	42	40	26	29
Percent of Alcohol-Related Injury Crashes to Total Injury Crashes	10%	10%	7%	8%

Virginia House District 39 Speed Crash Statistics

Report Generated May, 2024

	Count	Highest Time Period(s)	Highest Day(s)	Highest Month(s)
Fatal Crashes	7	6:00am - 8:59am	Monday	June • May
Resulting Fatalities	8	6:00pm - 8:59pm (58%)	(43%)	(58%)
Serious Injury Crashes	11	6:00pm - 8:59pm (27%)	Friday (27%)	April • September (36%)



House District 39 Speed-Related Crashes

Interstate Crashes

Non-interstate Crashes

● Fatal

● Fatal

● Serious Injury

● Serious Injury

The blue gradient represents the density of all speed-related crashes.

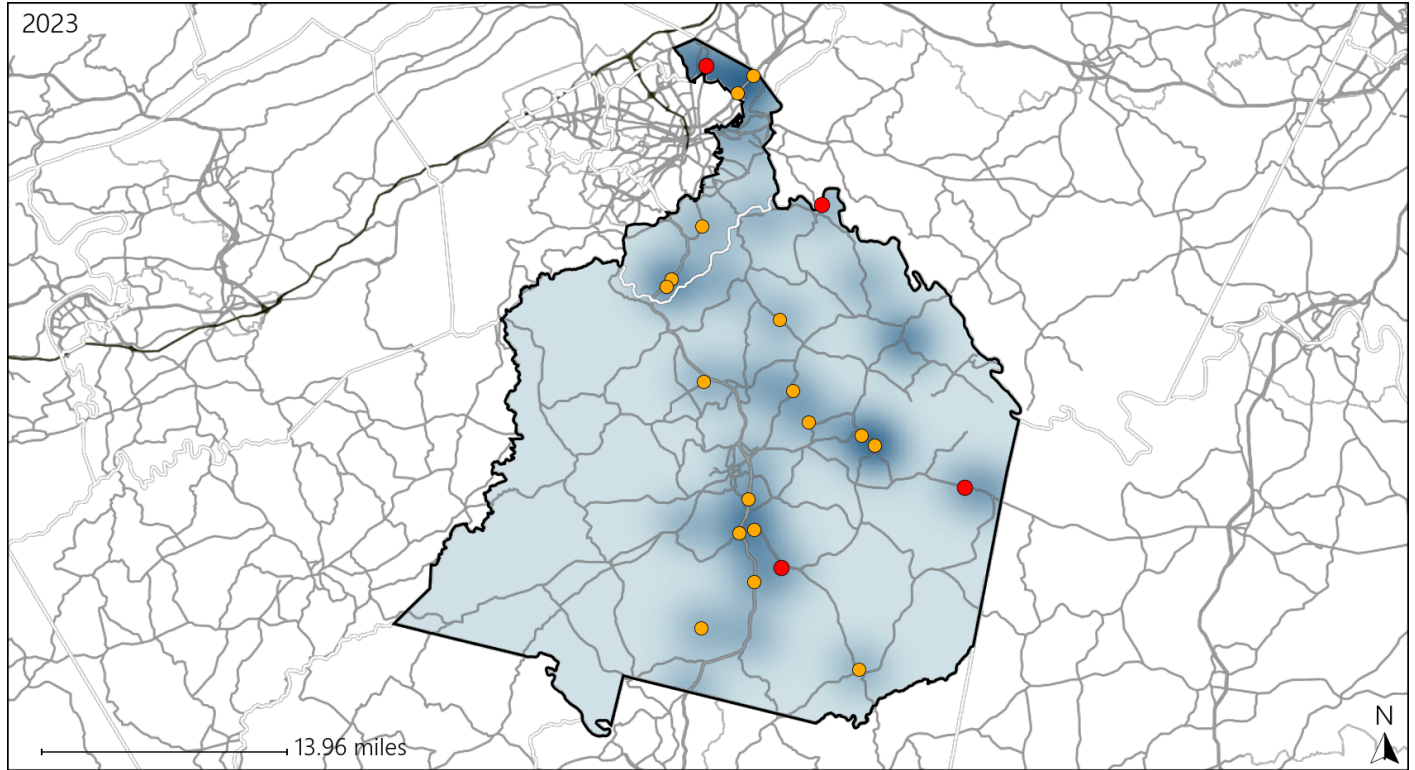


Available Crash Data - Calendar Year (CY)	CY 2020	CY 2021	CY 2022	CY 2023
Total Crashes	1237	1266	1223	1190
Fatal Crashes	8	12	17	11
Injury Crashes	420	393	400	386
Speed-Related Fatal Crashes	2	8	6	7
Percent of Speed-Related Fatal Crashes to Total Fatal Crashes	25%	67%	35%	64%
Speed-Related Injury Crashes	86	71	81	74
Percent of Speed-Related Injury Crashes to Total Injury Crashes	20%	18%	20%	19%

Virginia House District 39 Unrestrained Crash Statistics

Report Generated May, 2024

	Count	Highest Time Period(s)	Highest Day(s)	Highest Month(s)
Fatal Crashes	4	6:00am - 8:59am	Sunday	April • August
Unrestrained Fatalities	4	(50%)	(50%)	(50%)
Serious Injury Crashes	17	6:00pm - 8:59pm	Sunday • Thursday	August • December
		(29%)	(48%)	(36%)



House District 39 Unrestrained-Related Crashes

Interstate Crashes

- Fatal
- Serious Injury

Non-interstate Crashes

- Fatal
- Serious Injury

The blue gradient represents the density of all unrestrained-related crashes.

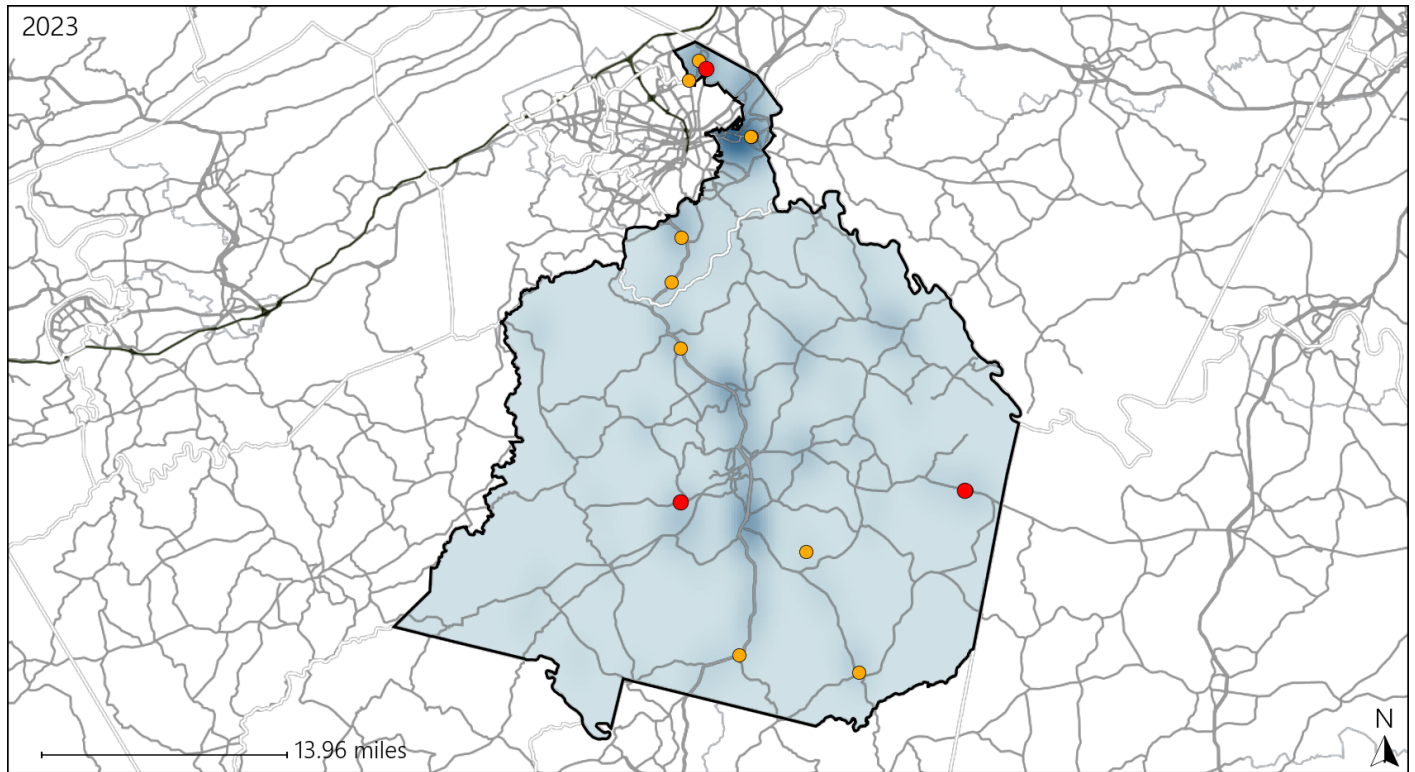


Available Crash Data - Calendar Year (CY)	CY 2020	CY 2021	CY 2022	CY 2023
Total Crashes	1237	1266	1223	1190
Fatalities	9	12	19	12
Injuries	552	543	580	533
Unrestrained Fatalities	5	7	10	4
Percent of Unrestrained Fatalities to Total Fatalities	56%	58%	53%	33%
Unrestrained Injuries	43	53	46	46
Percent of Unrestrained Injuries to Total Injuries	8%	10%	8%	9%

Virginia House District 39 Distracted Driving Crash Statistics

Report Generated May, 2024

	Count	Highest Time Period(s)	Highest Day(s)	Highest Month(s)
Fatal Crashes	3	6:00am - 8:59am	Monday	June
Resulting Fatalities	3	(67%)	(67%)	(67%)
Serious Injury Crashes	11	3:00pm - 5:59pm Midnight - 2:59am	Thursday	January
		(54%)	(36%)	(27%)



House District 39 Distracted Driving-Related Crashes

- | | |
|--------------------|------------------------|
| Interstate Crashes | Non-interstate Crashes |
| ● Fatal | ● Fatal |
| ⊕ Serious Injury | ● Serious Injury |

The blue gradient represents the density of all distracted driving-related crashes.



Available Crash Data - Calendar Year (CY)	CY 2020	CY 2021	CY 2022	CY 2023
Total Crashes	1237	1266	1223	1190
Fatal Crashes	8	12	17	11
Injury Crashes	420	393	400	386
Distracted Driving-Related Fatal Crashes	1	0	2	3
Percent of Distracted Driving-Related Fatal Crashes to Total Fatal Crashes	13%	0%	12%	27%
Distracted Driving-Related Injury Crashes	81	68	81	63
Percent of Distracted Driving-Related Injury Crashes to Total Injury Crashes	19%	17%	20%	16%