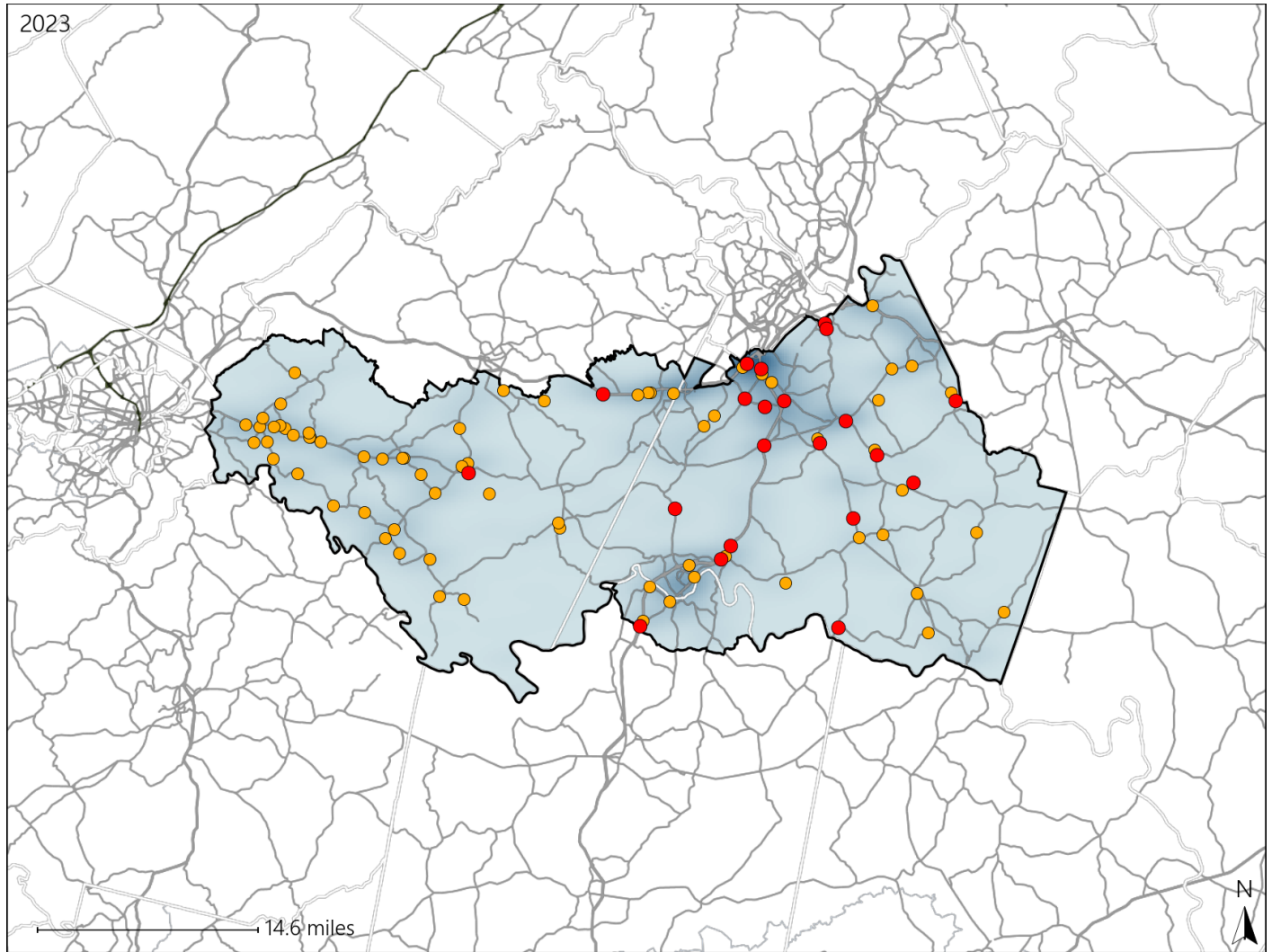


Virginia House District 51 Crash Statistics

Report Generated May, 2024

	Count	Highest Time Period(s)	Highest Day(s)	Highest Month(s)
Fatal Crashes	21	Noon - 2:59pm (24%)	Thursday (24%)	March - September (38%)
Resulting Fatalities	25			
Serious Injury Crashes	70	Noon - 2:59pm (17%)	Tuesday (21%)	August (13%)



House District 51 Crashes

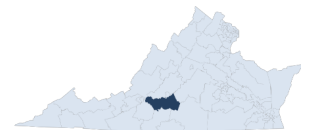
Interstate Crashes

- Fatal
- Serious Injury

Non-interstate Crashes

- Fatal
- Serious Injury

The blue gradient represents the density of all crashes.

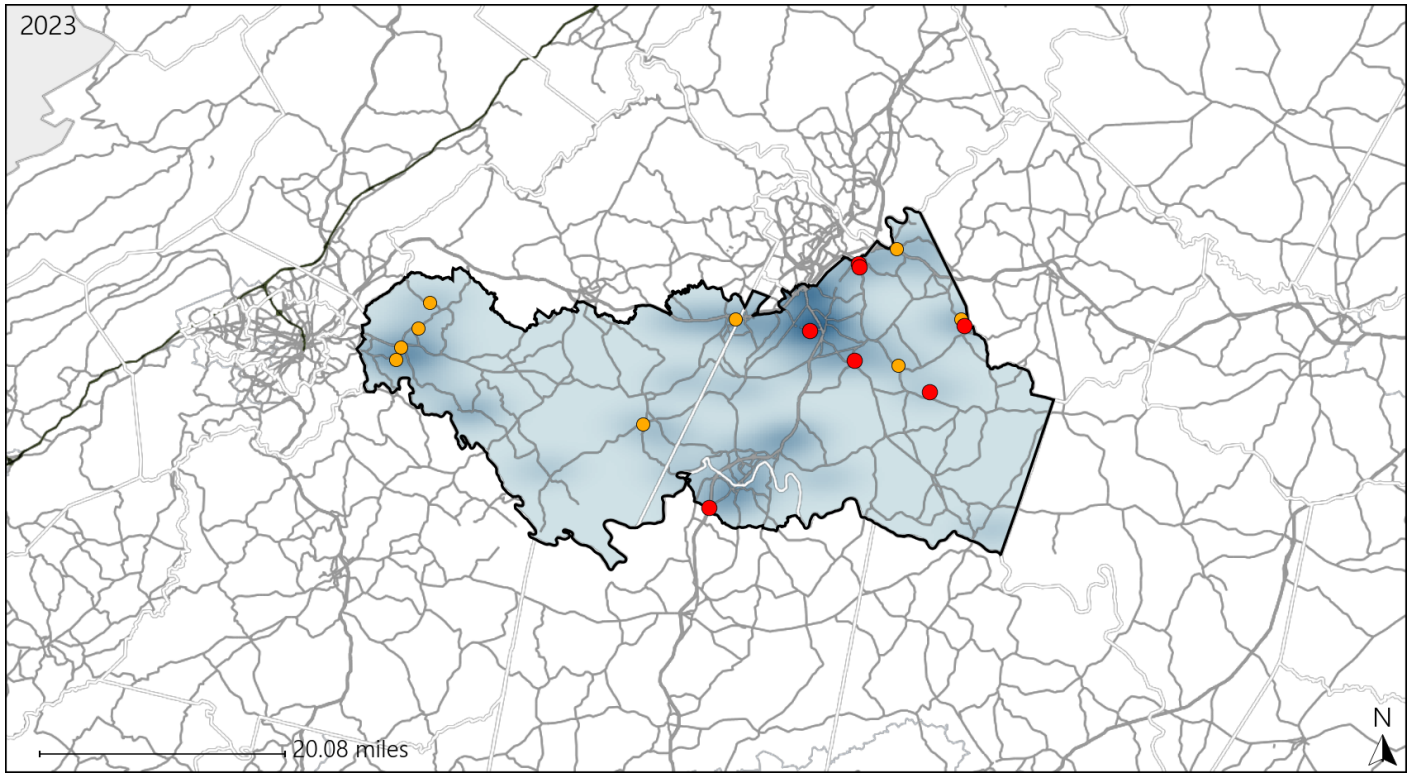


Available Crash Data - Calendar Year (CY)	CY 2020	CY 2021	CY 2022	CY 2023
Total Crashes	915	975	1010	1085
Fatal Crashes	14	20	18	21
Injury Crashes	281	299	276	284

Virginia House District 51 Alcohol Crash Statistics

Report Generated May, 2024

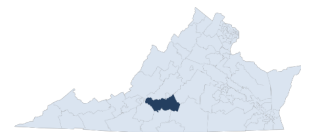
	Count	Highest Time Period(s)	Highest Day(s)	Highest Month(s)
Fatal Crashes	7	6:00pm - 8:59pm	Friday • Saturday	October • September
Resulting Fatalities	8	9:00pm - 11:59pm (58%)	(58%)	(58%)
Serious Injury Crashes	10	6:00pm - 8:59pm	Sunday	February • May
		9:00pm - 11:59pm (60%)	(40%)	(40%)



House District 51 Alcohol-Related Crashes

Interstate Crashes Non-interstate Crashes
 ● Fatal ● Fatal
 ⊕ Serious Injury ⊕ Serious Injury

The blue gradient represents the density of all alcohol-related crashes.

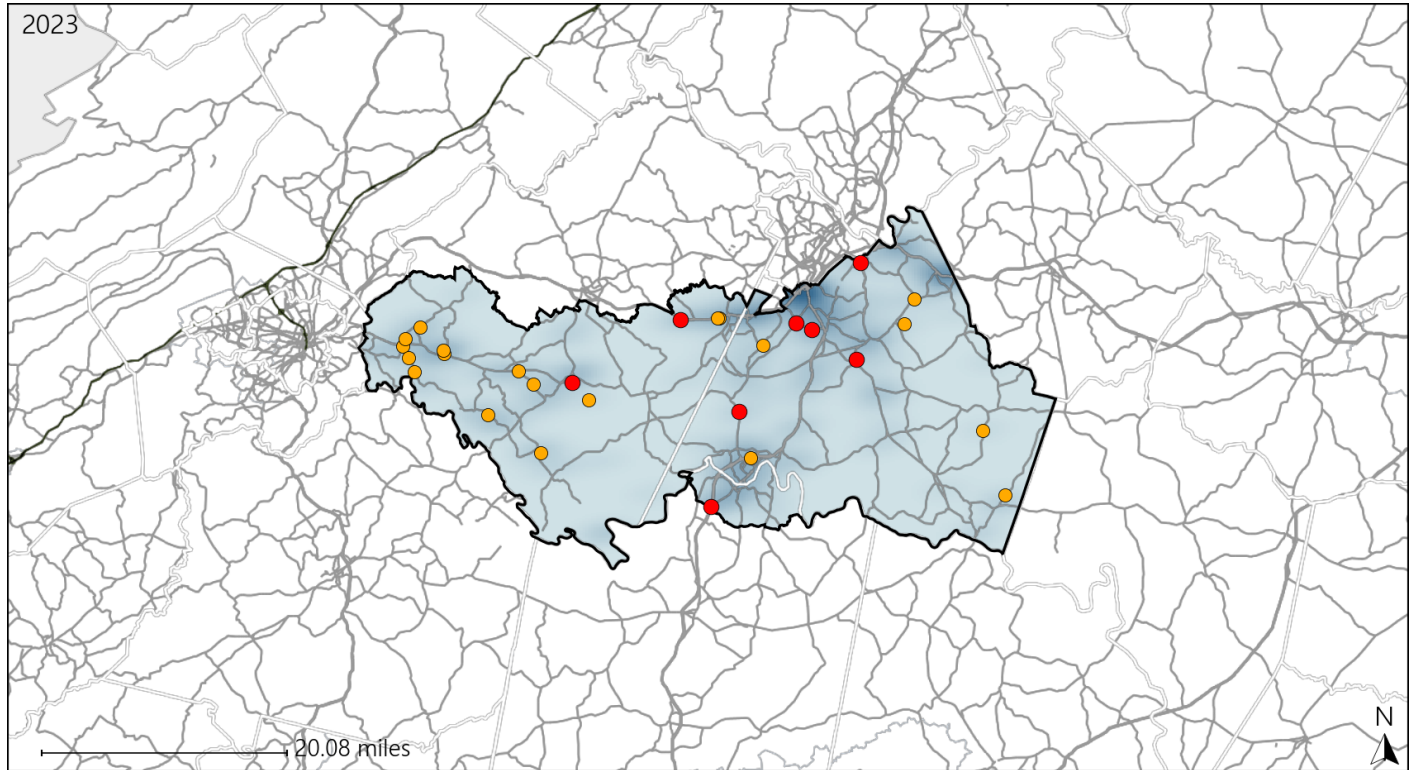


Available Crash Data - Calendar Year (CY)	CY 2020	CY 2021	CY 2022	CY 2023
Total Crashes	915	975	1010	1085
Fatal Crashes	14	20	18	21
Injury Crashes	281	299	276	284
Alcohol-Related Fatal Crashes	4	2	5	7
Percent of Alcohol-Related Fatal Crashes to Total Fatal Crashes	29%	10%	28%	33%
Alcohol-Related Injury Crashes	28	25	19	21
Percent of Alcohol-Related Injury Crashes to Total Injury Crashes	10%	8%	7%	7%

Virginia House District 51 Speed Crash Statistics

Report Generated May, 2024

	Count	Highest Time Period(s)	Highest Day(s)	Highest Month(s)
Fatal Crashes	8	6:00pm - 8:59pm	Monday • Saturday	September
Resulting Fatalities	12	9:00pm - 11:59pm (50%)	(50%)	(38%)
Serious Injury Crashes	21	Noon - 2:59pm	Thursday	December • May
		(29%)	(33%)	(38%)



House District 51 Speed-Related Crashes

Interstate Crashes

Non-interstate Crashes

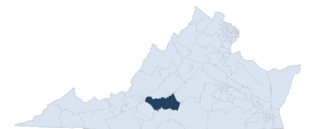
● Fatal

● Fatal

● Serious Injury

● Serious Injury

The blue gradient represents the density of all speed-related crashes.

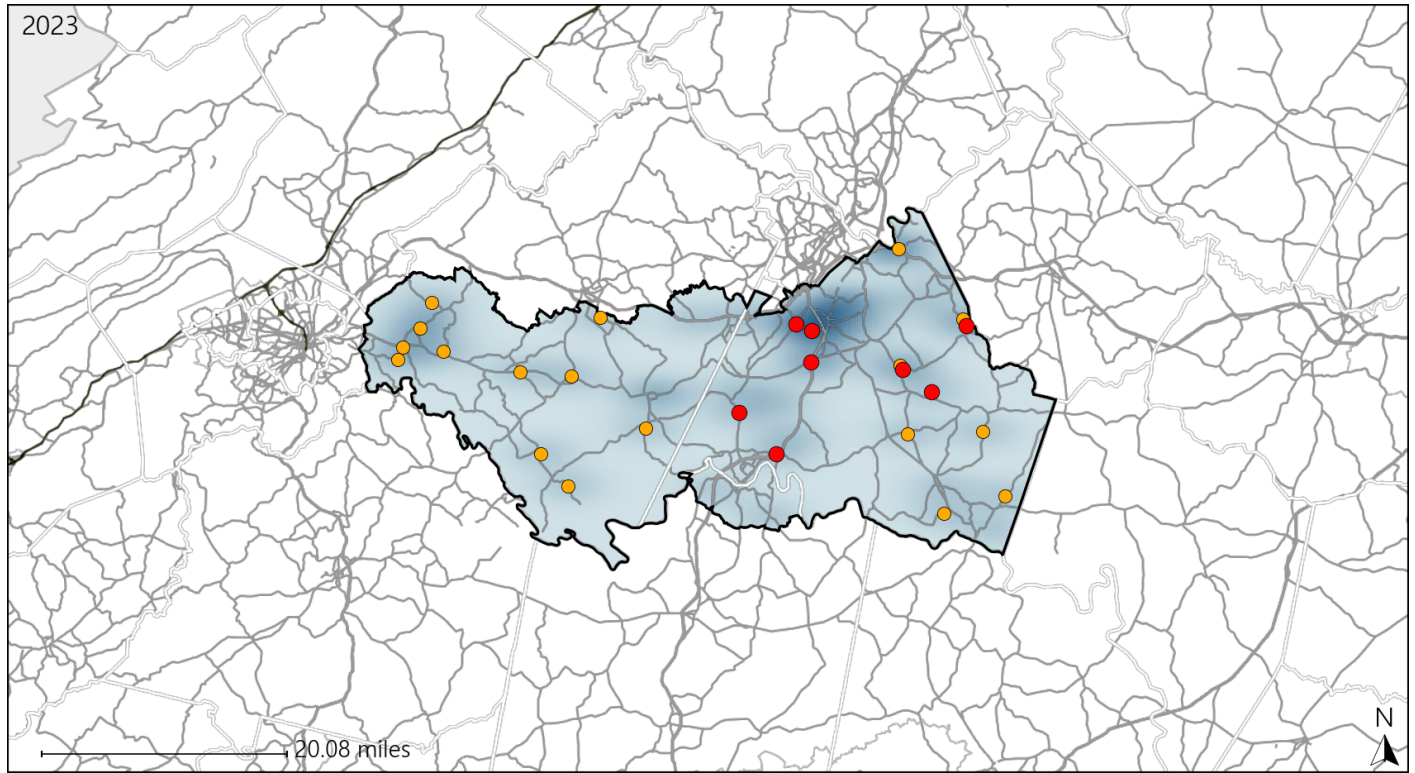


Available Crash Data - Calendar Year (CY)	CY 2020	CY 2021	CY 2022	CY 2023
Total Crashes	915	975	1010	1085
Fatal Crashes	14	20	18	21
Injury Crashes	281	299	276	284
Speed-Related Fatal Crashes	2	10	5	8
Percent of Speed-Related Fatal Crashes to Total Fatal Crashes	14%	50%	28%	38%
Speed-Related Injury Crashes	68	73	62	63
Percent of Speed-Related Injury Crashes to Total Injury Crashes	24%	24%	22%	22%

Virginia House District 51 Unrestrained Crash Statistics

Report Generated May, 2024

	Count	Highest Time Period(s)	Highest Day(s)	Highest Month(s)
Fatal Crashes	8	3:00pm - 5:59pm	Monday • Saturday	September
Unrestrained Fatalities	9	Noon - 2:59pm (50%)	(50%)	(38%)
Serious Injury Crashes	19	3:00am - 5:59am 6:00pm - 8:59pm (42%)	Friday (32%)	April • December (32%)



House District 51 Unrestrained-Related Crashes

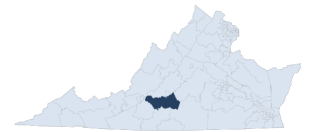
Interstate Crashes

Non-interstate Crashes

- Fatal
- ⊕ Serious Injury

- Fatal
- ⊕ Serious Injury

The blue gradient represents the density of all unrestrained-related crashes.

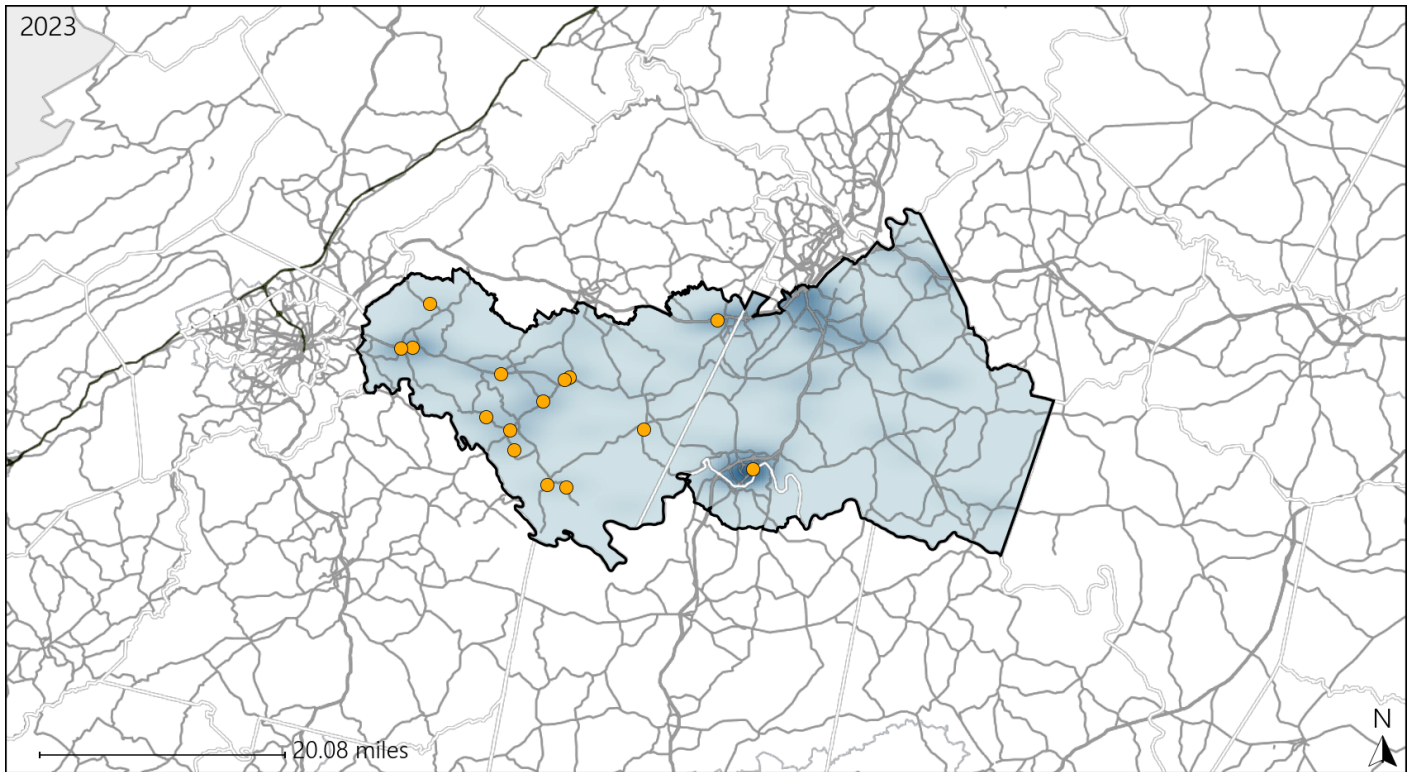


Available Crash Data - Calendar Year (CY)	CY 2020	CY 2021	CY 2022	CY 2023
Total Crashes	915	975	1010	1085
Fatalities	14	21	18	25
Injuries	370	429	388	433
Unrestrained Fatalities	6	8	3	9
Percent of Unrestrained Fatalities to Total Fatalities	43%	38%	17%	36%
Unrestrained Injuries	50	47	42	49
Percent of Unrestrained Injuries to Total Injuries	14%	11%	11%	11%

Virginia House District 51 Distracted Driving Crash Statistics

Report Generated May, 2024

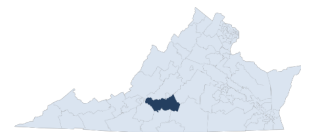
	Count	Highest Time Period(s)	Highest Day(s)	Highest Month(s)
Fatal Crashes	0	-	-	-
Resulting Fatalities	0	-	-	-
Serious Injury Crashes	15	6:00am - 8:59am 6:00pm - 8:59pm (40%)	Tuesday (47%)	August + May (40%)



House District 51 Distracted Driving-Related Crashes

- | | |
|--------------------|------------------------|
| Interstate Crashes | Non-interstate Crashes |
| ● Fatal | ● Fatal |
| ⊕ Serious Injury | ⊕ Serious Injury |

The blue gradient represents the density of all distracted driving-related crashes.



Available Crash Data - Calendar Year (CY)	CY 2020	CY 2021	CY 2022	CY 2023
Total Crashes	915	975	1010	1085
Fatal Crashes	14	20	18	21
Injury Crashes	281	299	276	284
Distracted Driving-Related Fatal Crashes	1	2	1	0
Percent of Distracted Driving-Related Fatal Crashes to Total Fatal Crashes	7%	10%	6%	0%
Distracted Driving-Related Injury Crashes	53	52	49	45
Percent of Distracted Driving-Related Injury Crashes to Total Injury Crashes	19%	17%	18%	16%