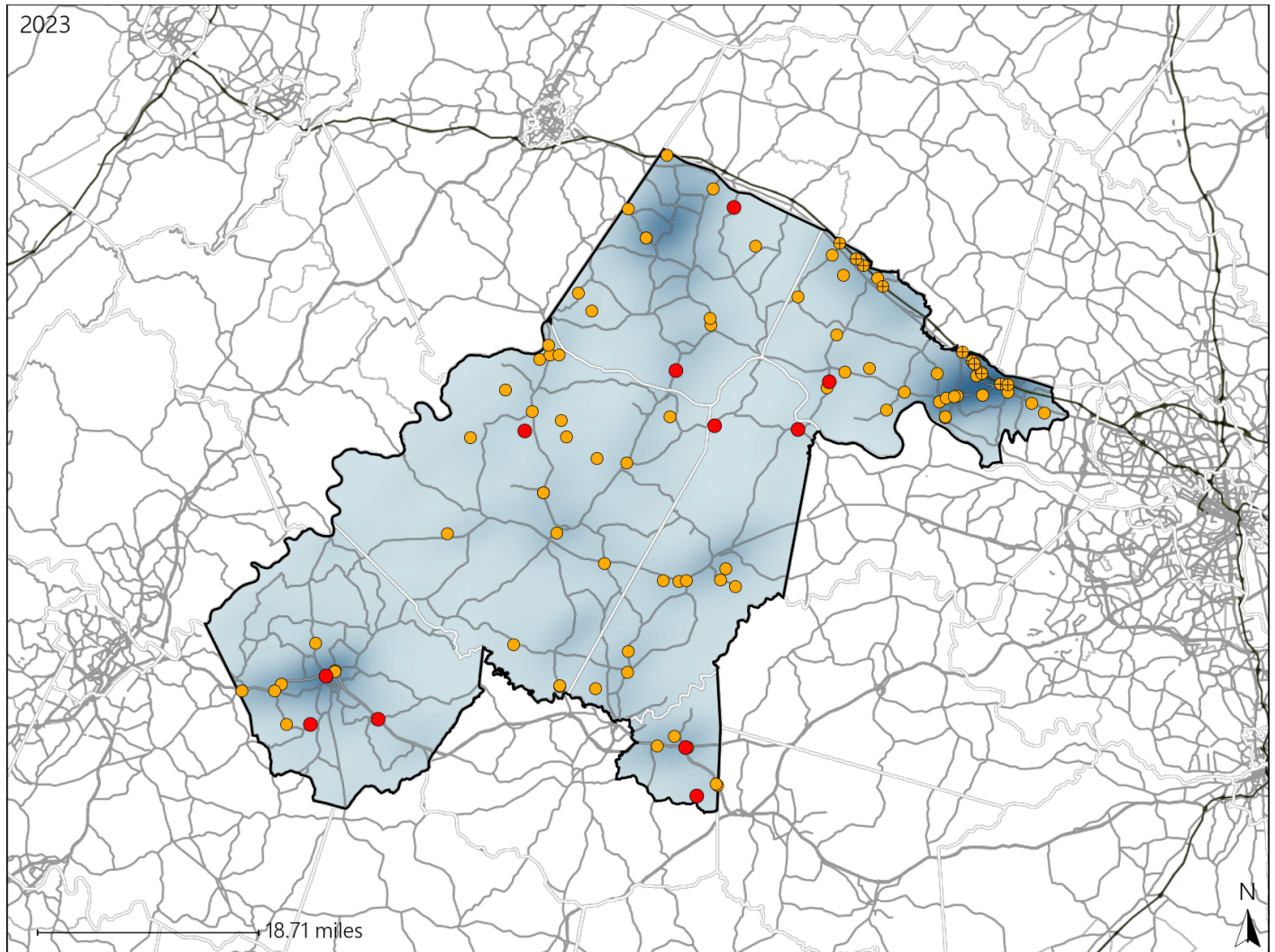


# Virginia House District 56 Crash Statistics

Report Generated May, 2024

	Count	Highest Time Period(s)	Highest Day(s)	Highest Month(s)
<b>Fatal Crashes</b>	<b>11</b>	Noon - 2:59pm	Sunday	June
<b>Resulting Fatalities</b>	<b>11</b>	(45%)	(27%)	(36%)
<b>Serious Injury Crashes</b>	<b>88</b>	3:00pm - 5:59pm 6:00pm - 8:59pm	Sunday	May
		(38%)	(22%)	(15%)



### House District 56 Crashes

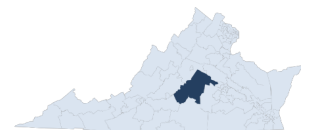
Interstate Crashes

- Fatal
- Serious Injury

Non-interstate Crashes

- Fatal
- Serious Injury

The blue gradient represents the density of all crashes.

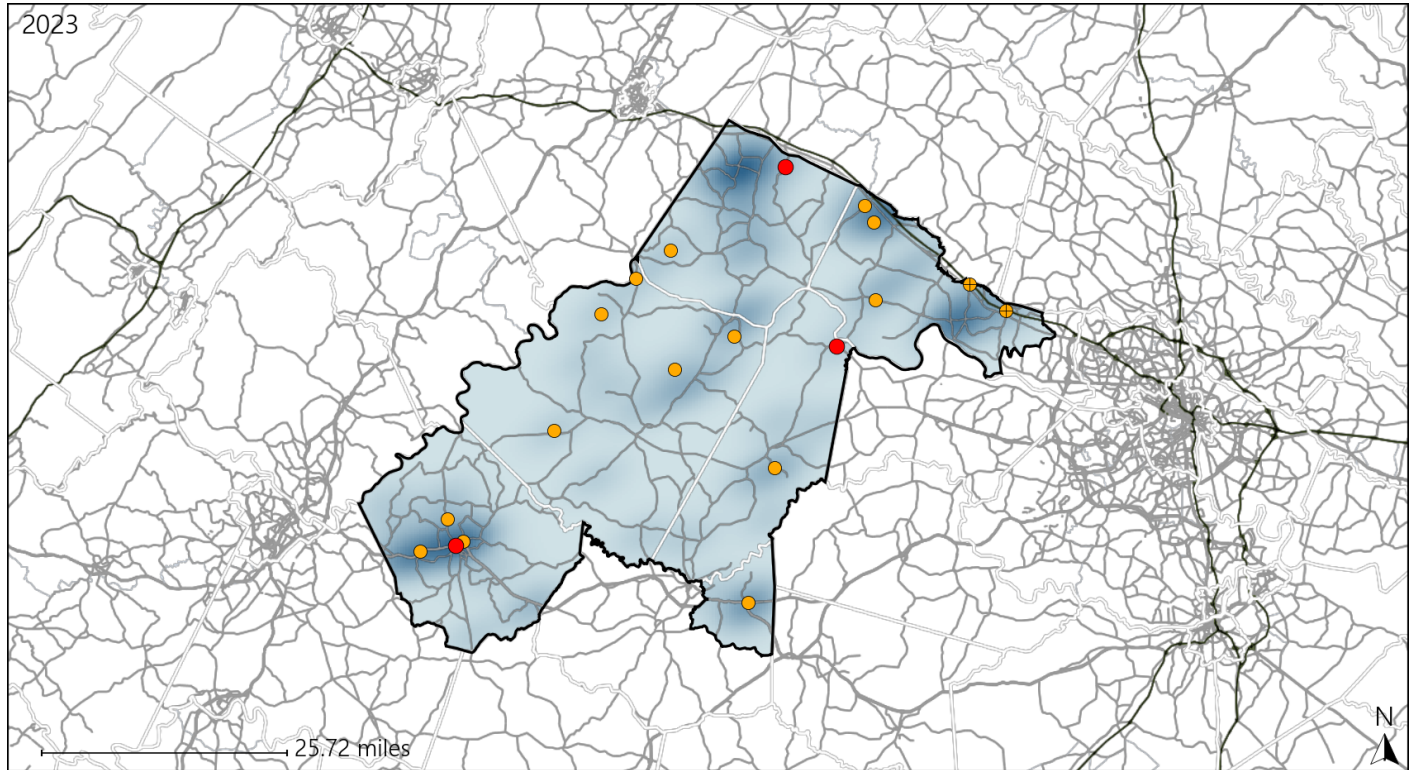


Available Crash Data - Calendar Year (CY)	CY 2020	CY 2021	CY 2022	CY 2023
Total Crashes	988	1103	1083	1140
Fatal Crashes	13	20	12	11
Injury Crashes	351	356	340	367

# Virginia House District 56 Alcohol Crash Statistics

Report Generated May, 2024

	Count	Highest Time Period(s)	Highest Day(s)	Highest Month(s)
<b>Fatal Crashes</b>	<b>3</b>	3:00pm - 5:59pm	Thursday	April • June
<b>Resulting Fatalities</b>	<b>3</b>	9:00pm - 11:59pm (66%)	(67%)	(66%)
<b>Serious Injury Crashes</b>	<b>17</b>	3:00pm - 5:59pm (35%)	Wednesday (35%)	July (29%)



### House District 56 Alcohol-Related Crashes

Interstate Crashes

Non-interstate Crashes

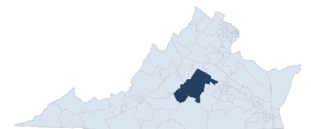
● Fatal

● Fatal

● Serious Injury

● Serious Injury

The blue gradient represents the density of all alcohol-related crashes.

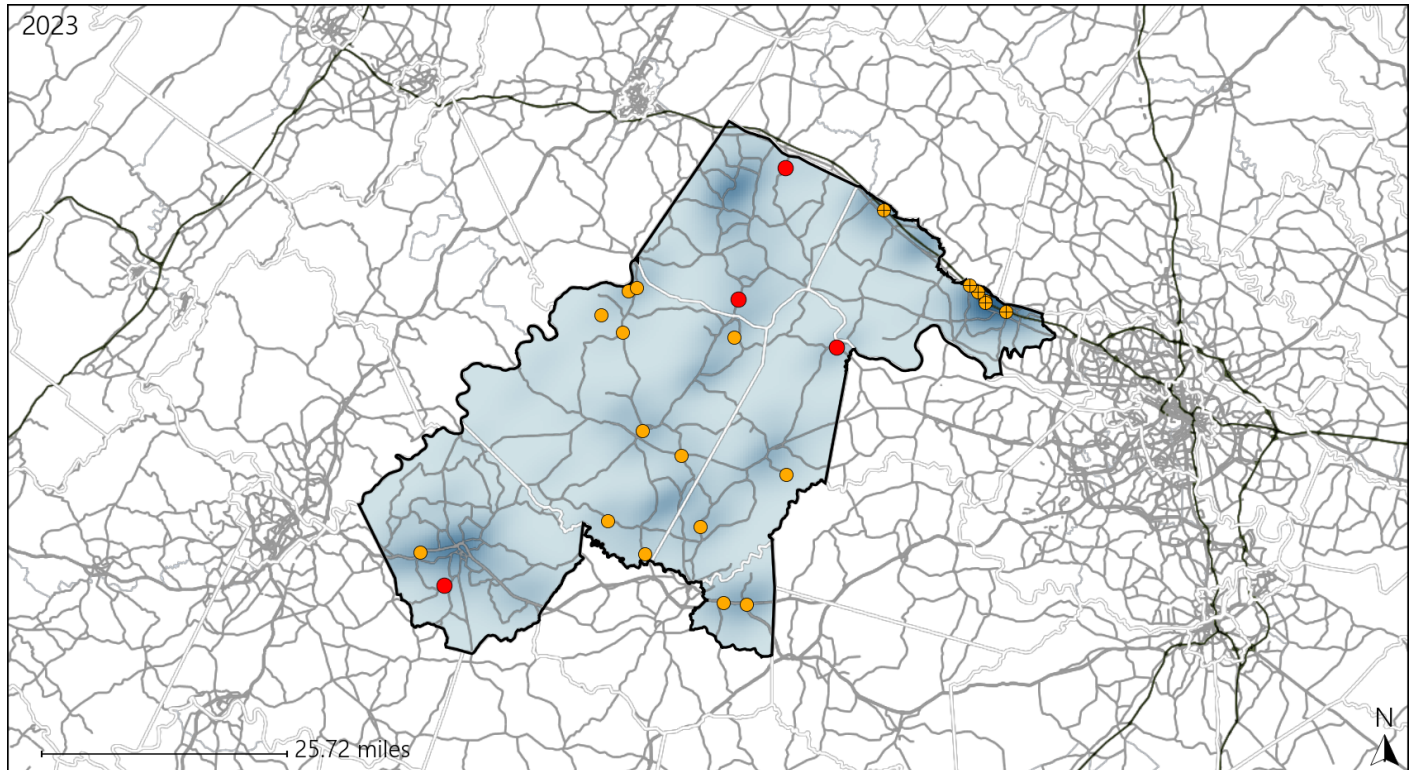


Available Crash Data - Calendar Year (CY)	CY 2020	CY 2021	CY 2022	CY 2023
Total Crashes	988	1103	1083	1140
Fatal Crashes	13	20	12	11
Injury Crashes	351	356	340	367
Alcohol-Related Fatal Crashes	6	6	2	3
Percent of Alcohol-Related Fatal Crashes to Total Fatal Crashes	46%	30%	17%	27%
Alcohol-Related Injury Crashes	32	36	24	40
Percent of Alcohol-Related Injury Crashes to Total Injury Crashes	9%	10%	7%	11%

# Virginia House District 56 Speed Crash Statistics

Report Generated May, 2024

	Count	Highest Time Period(s)	Highest Day(s)	Highest Month(s)
<b>Fatal Crashes</b>	<b>4</b>	<b>3:00pm - 5:59pm</b>	<b>Friday • Saturday</b>	<b>June</b>
<b>Resulting Fatalities</b>	<b>4</b>	(50%)	(50%)	(50%)
<b>Serious Injury Crashes</b>	<b>20</b>	<b>3:00pm - 5:59pm</b>	<b>Sunday</b>	<b>May</b>
		(30%)	(35%)	(20%)



## House District 56 Speed-Related Crashes

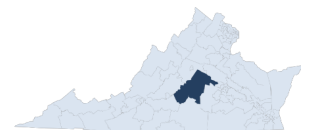
Interstate Crashes

Non-interstate Crashes

- Fatal
- Serious Injury

- Fatal
- Serious Injury

The blue gradient represents the density of all speed-related crashes.

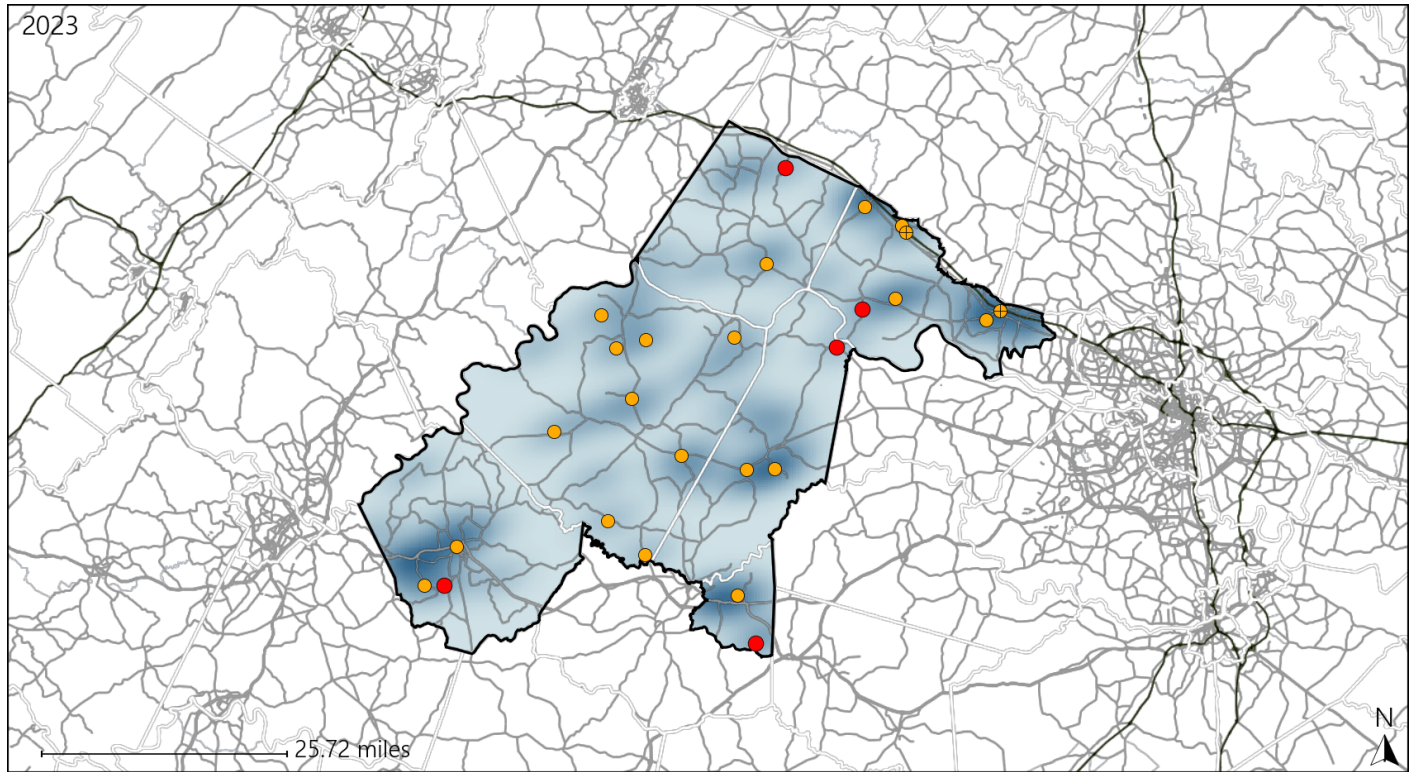


Available Crash Data - Calendar Year (CY)	CY 2020	CY 2021	CY 2022	CY 2023
Total Crashes	988	1103	1083	1140
Fatal Crashes	13	20	12	11
Injury Crashes	351	356	340	367
Speed-Related Fatal Crashes	6	12	6	4
Percent of Speed-Related Fatal Crashes to Total Fatal Crashes	46%	60%	50%	36%
Speed-Related Injury Crashes	82	93	89	88
Percent of Speed-Related Injury Crashes to Total Injury Crashes	23%	26%	26%	24%

# Virginia House District 56 Unrestrained Crash Statistics

Report Generated May, 2024

	Count	Highest Time Period(s)	Highest Day(s)	Highest Month(s)
<b>Fatal Crashes</b>	<b>5</b>	<b>3:00pm - 5:59pm</b>	<b>Friday</b>	<b>June • November</b>
<b>Unrestrained Fatalities</b>	<b>5</b>	<b>(60%)</b>	<b>(40%)</b>	<b>(80%)</b>
<b>Serious Injury Crashes</b>	<b>21</b>	<b>Noon - 2:59pm</b>	<b>Wednesday</b>	<b>August • May</b>
		<b>(29%)</b>	<b>(24%)</b>	<b>(38%)</b>



## House District 56 Unrestrained-Related Crashes

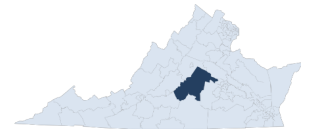
Interstate Crashes

- Fatal
- Serious Injury

Non-interstate Crashes

- Fatal
- Serious Injury

The blue gradient represents the density of all unrestrained-related crashes.

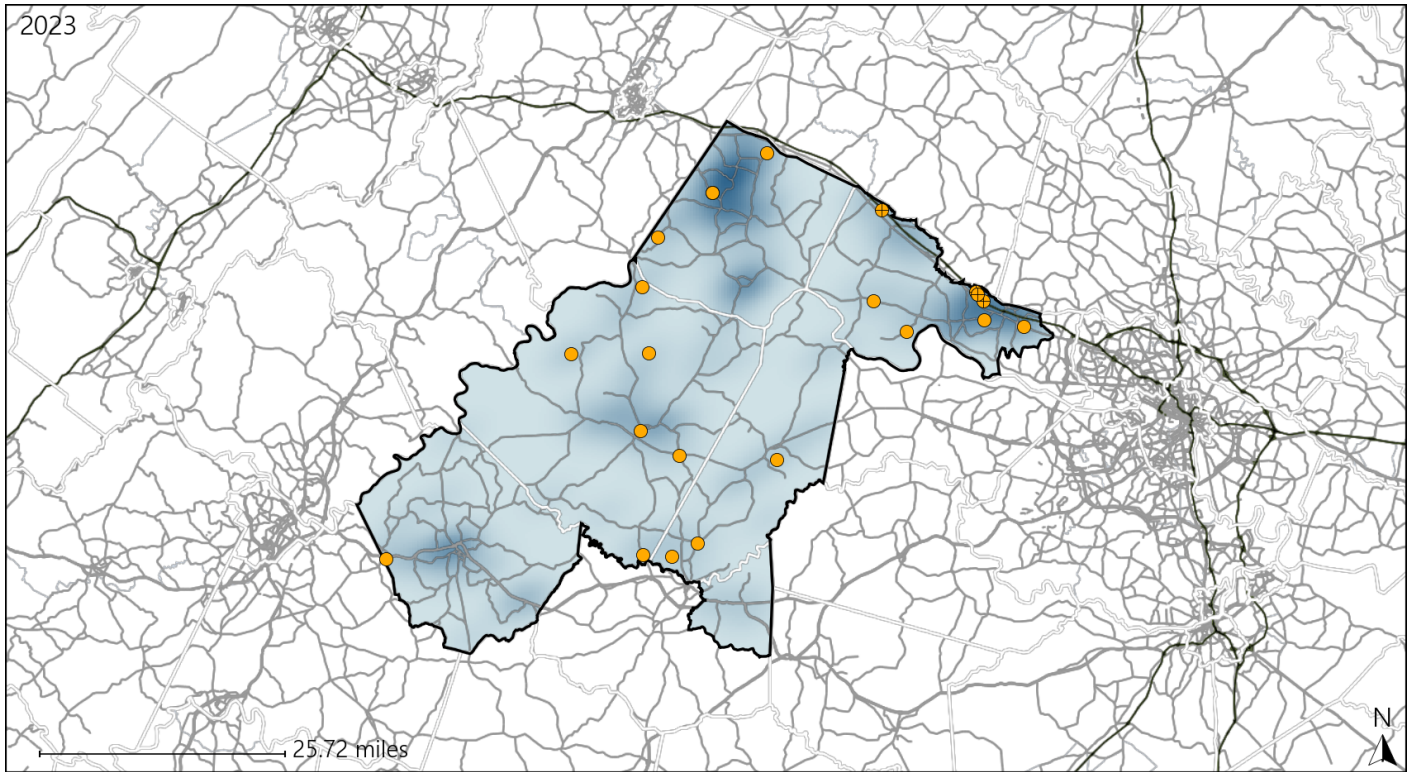


Available Crash Data - Calendar Year (CY)	CY 2020	CY 2021	CY 2022	CY 2023
<b>Total Crashes</b>	<b>988</b>	<b>1103</b>	<b>1083</b>	<b>1140</b>
<b>Fatalities</b>	<b>15</b>	<b>24</b>	<b>14</b>	<b>11</b>
<b>Injuries</b>	<b>534</b>	<b>485</b>	<b>478</b>	<b>549</b>
<b>Unrestrained Fatalities</b>	<b>9</b>	<b>12</b>	<b>7</b>	<b>5</b>
<b>Percent of Unrestrained Fatalities to Total Fatalities</b>	<b>60%</b>	<b>50%</b>	<b>50%</b>	<b>45%</b>
<b>Unrestrained Injuries</b>	<b>86</b>	<b>86</b>	<b>71</b>	<b>78</b>
<b>Percent of Unrestrained Injuries to Total Injuries</b>	<b>16%</b>	<b>18%</b>	<b>15%</b>	<b>14%</b>

# Virginia House District 56 Distracted Driving Crash Statistics

Report Generated May, 2024

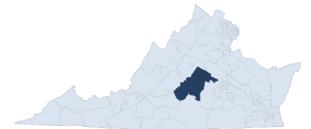
	Count	Highest Time Period(s)	Highest Day(s)	Highest Month(s)
<b>Fatal Crashes</b>	<b>0</b>	-	-	-
<b>Resulting Fatalities</b>	<b>0</b>	-	-	-
<b>Serious Injury Crashes</b>	<b>22</b>	<b>6:00am - 8:59am (36%)</b>	<b>Sunday - Wednesday (46%)</b>	<b>October (27%)</b>



## House District 56 Distracted Driving-Related Crashes

- |                    |                        |
|--------------------|------------------------|
| Interstate Crashes | Non-interstate Crashes |
| Fatal              | Fatal                  |
| Serious Injury     | Serious Injury         |

The blue gradient represents the density of all distracted driving-related crashes.



Available Crash Data - Calendar Year (CY)	CY 2020	CY 2021	CY 2022	CY 2023
Total Crashes	988	1103	1083	1140
Fatal Crashes	13	20	12	11
Injury Crashes	351	356	340	367
Distracted Driving-Related Fatal Crashes	3	3	2	0
Percent of Distracted Driving-Related Fatal Crashes to Total Fatal Crashes	23%	15%	17%	0%
Distracted Driving-Related Injury Crashes	60	69	61	65
Percent of Distracted Driving-Related Injury Crashes to Total Injury Crashes	17%	19%	18%	18%