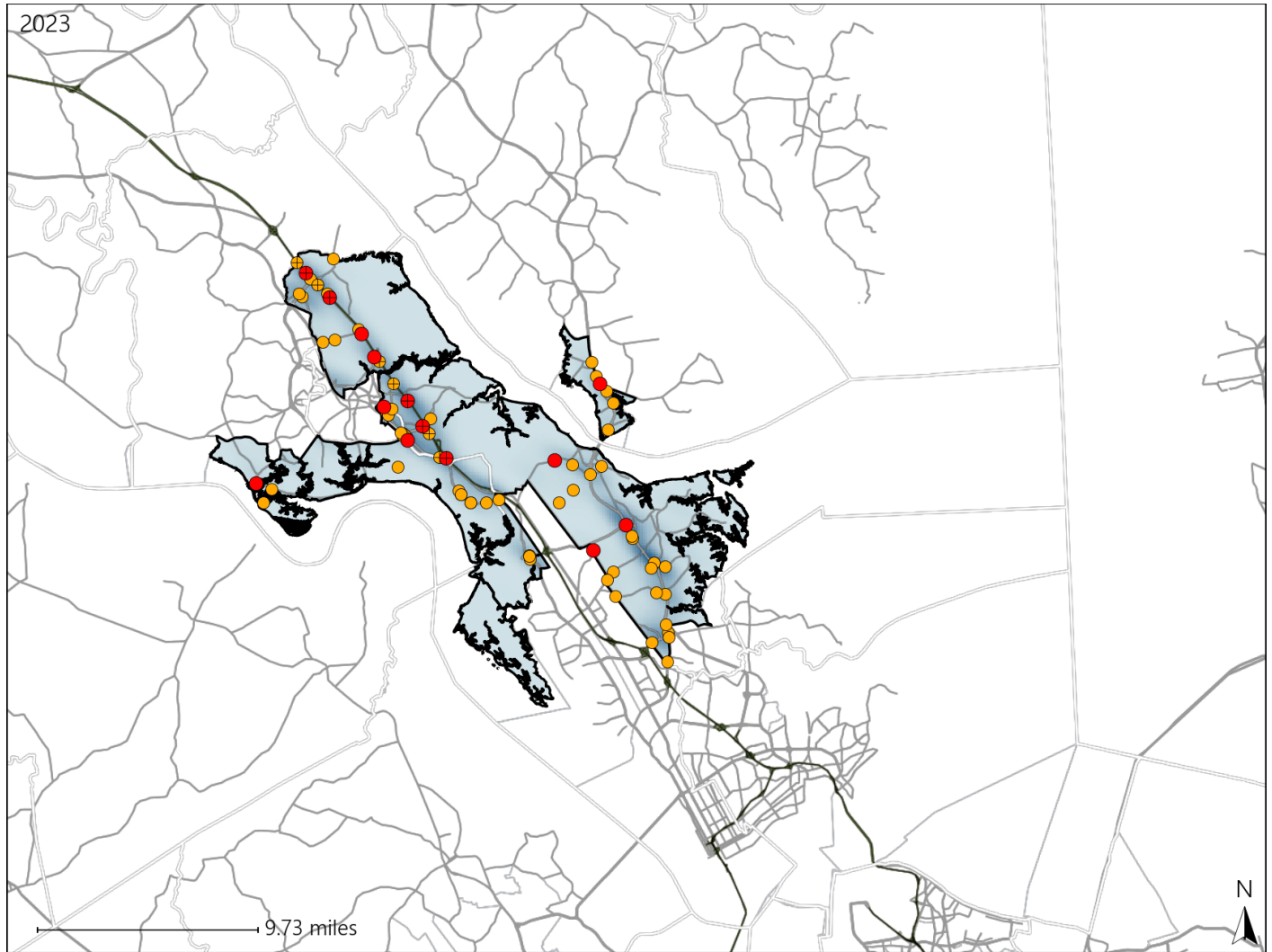


Virginia House District 69 Crash Statistics

Report Generated May, 2024

	Count	Highest Time Period(s)	Highest Day(s)	Highest Month(s)
Fatal Crashes	14	6:00pm - 8:59pm	Friday	October
Resulting Fatalities	14	(43%)	(43%)	(29%)
Serious Injury Crashes	64	3:00pm - 5:59pm	Friday	July • March
		(27%)	(27%)	(24%)



House District 69 Crashes

Interstate Crashes

- Fatal
- Serious Injury

Non-interstate Crashes

- Fatal
- Serious Injury

The blue gradient represents the density of all crashes.

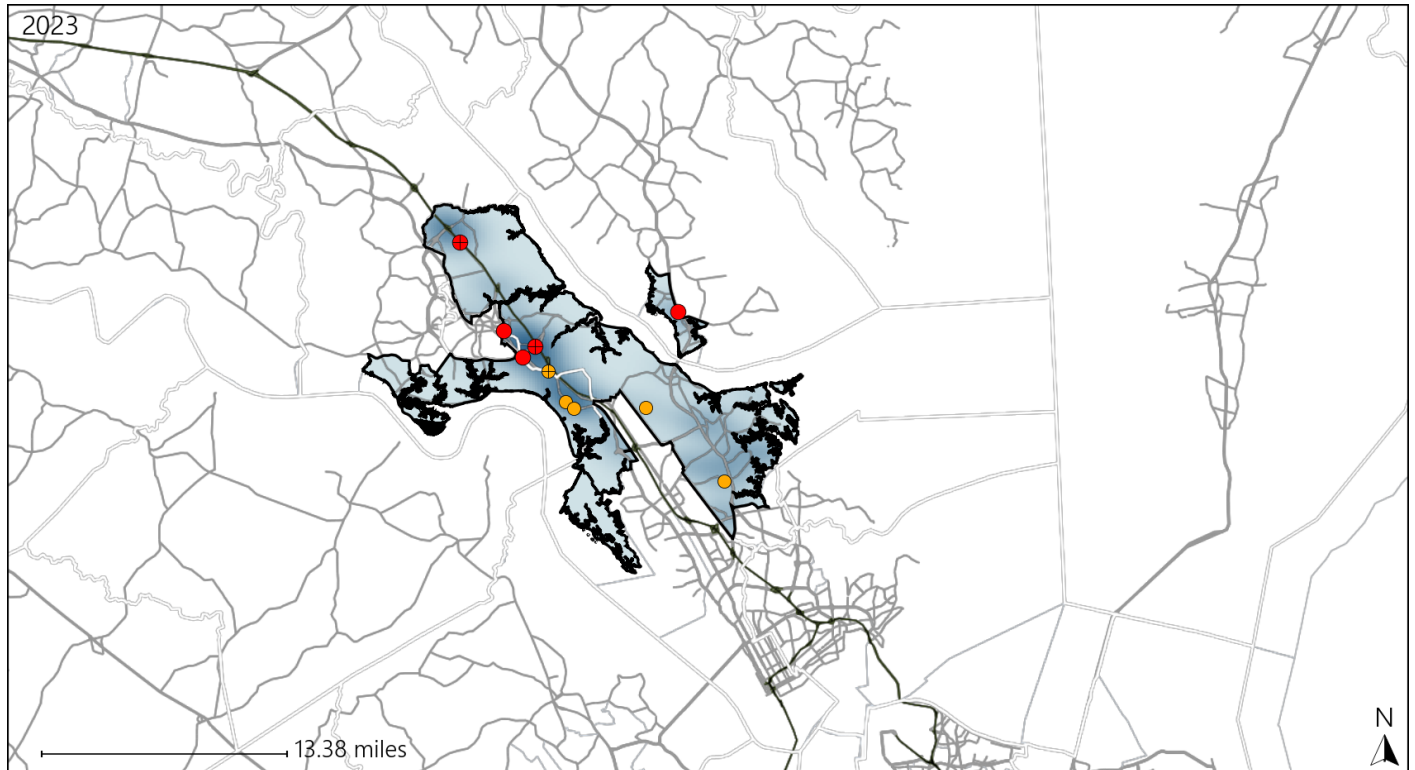


Available Crash Data - Calendar Year (CY)	CY 2020	CY 2021	CY 2022	CY 2023
Total Crashes	955	1104	1065	1105
Fatal Crashes	10	7	9	14
Injury Crashes	304	345	280	326

Virginia House District 69 Alcohol Crash Statistics

Report Generated May, 2024

	Count	Highest Time Period(s)	Highest Day(s)	Highest Month(s)
Fatal Crashes	5	6:00pm - 8:59pm	Friday	March • October
Resulting Fatalities	5	(60%)	(60%)	(80%)
Serious Injury Crashes	5	9:00pm - 11:59pm	Sunday	July • October
		(60%)	(60%)	(80%)



House District 69 Alcohol-Related Crashes

Interstate Crashes

Non-interstate Crashes

- Fatal
- Serious Injury

- Fatal
- Serious Injury

The blue gradient represents the density of all alcohol-related crashes.

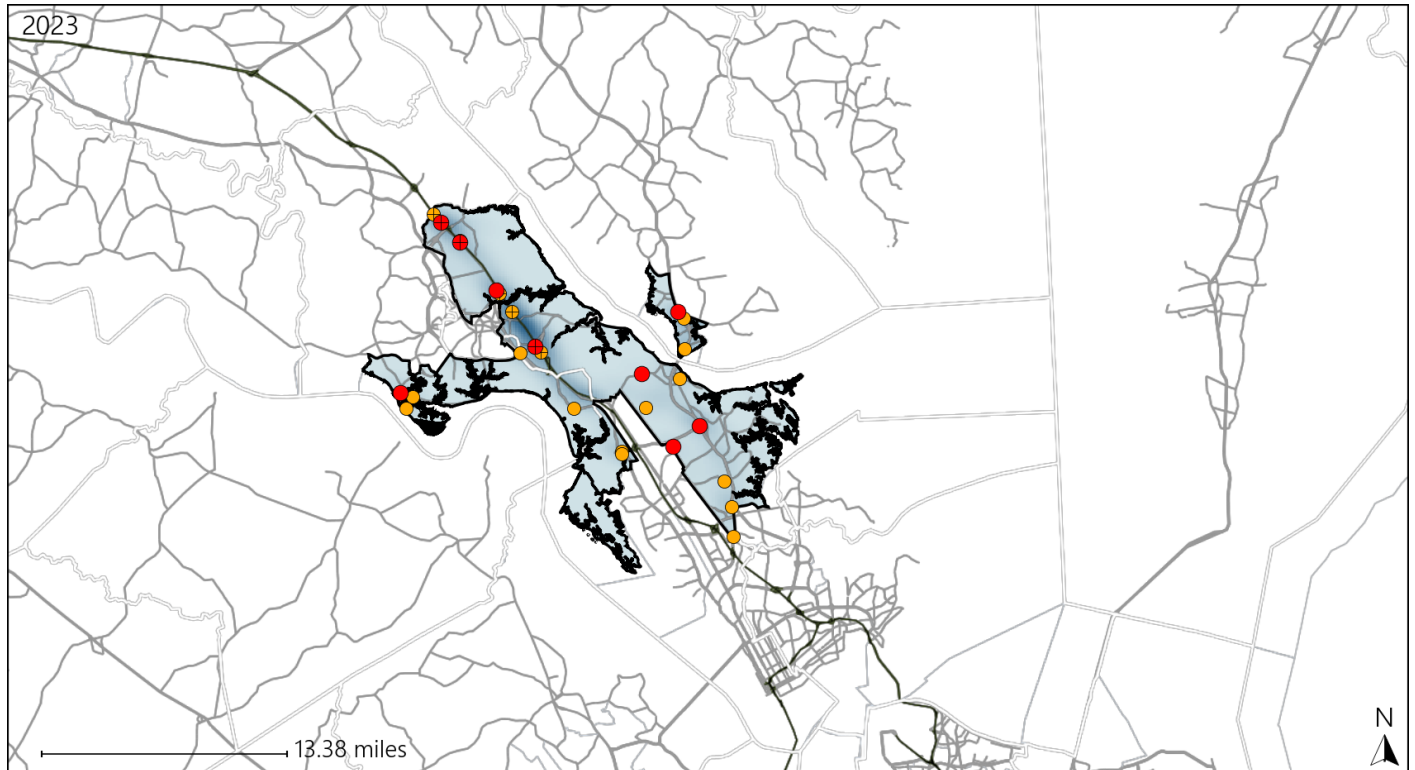


Available Crash Data - Calendar Year (CY)	CY 2020	CY 2021	CY 2022	CY 2023
Total Crashes	955	1104	1065	1105
Fatal Crashes	10	7	9	14
Injury Crashes	304	345	280	326
Alcohol-Related Fatal Crashes	4	3	3	5
Percent of Alcohol-Related Fatal Crashes to Total Fatal Crashes	40%	43%	33%	36%
Alcohol-Related Injury Crashes	30	28	24	23
Percent of Alcohol-Related Injury Crashes to Total Injury Crashes	10%	8%	9%	7%

Virginia House District 69 Speed Crash Statistics

Report Generated May, 2024

	Count	Highest Time Period(s)	Highest Day(s)	Highest Month(s)
Fatal Crashes	9	6:00pm - 8:59pm	Friday	January - March
Resulting Fatalities	9	(33%)	(44%)	(44%)
Serious Injury Crashes	19	9:00pm - 11:59pm	Friday	July
		(26%)	(37%)	(26%)



House District 69 Speed-Related Crashes

Interstate Crashes

Non-interstate Crashes

- Fatal
- Serious Injury

- Fatal
- Serious Injury

The blue gradient represents the density of all speed-related crashes.

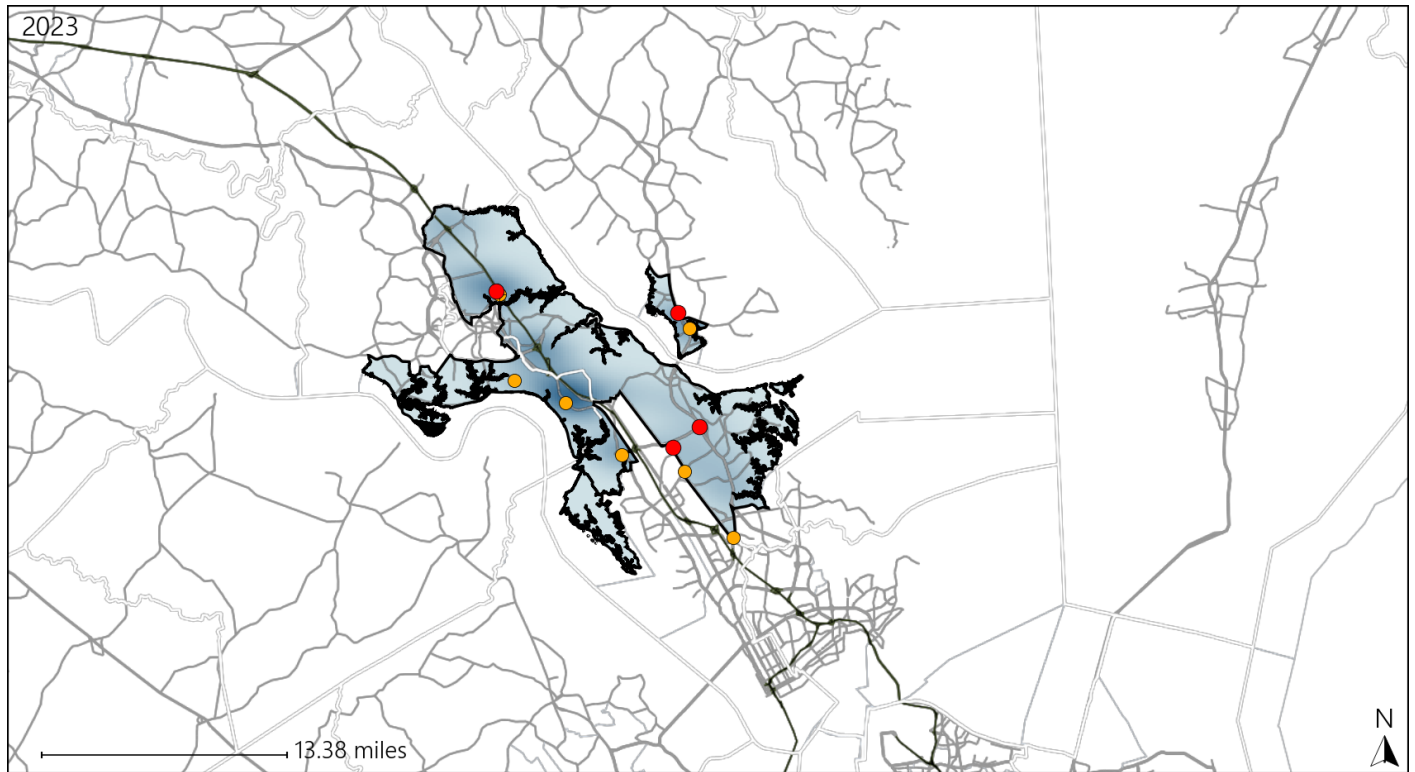


Available Crash Data - Calendar Year (CY)	CY 2020	CY 2021	CY 2022	CY 2023
Total Crashes	955	1104	1065	1105
Fatal Crashes	10	7	9	14
Injury Crashes	304	345	280	326
Speed-Related Fatal Crashes	7	5	3	9
Percent of Speed-Related Fatal Crashes to Total Fatal Crashes	70%	71%	33%	64%
Speed-Related Injury Crashes	85	71	57	67
Percent of Speed-Related Injury Crashes to Total Injury Crashes	28%	21%	20%	21%

Virginia House District 69 Unrestrained Crash Statistics

Report Generated May, 2024

	Count	Highest Time Period(s)	Highest Day(s)	Highest Month(s)
Fatal Crashes	4	9:00pm - 11:59pm	Friday • Wednesday	December • January
Unrestrained Fatalities	4	(50%)	(100%)	(50%)
Serious Injury Crashes	7	3:00am - 5:59am Noon - 2:59pm	Friday	December
		(58%)	(57%)	(29%)



House District 69 Unrestrained-Related Crashes

- | | |
|--------------------|------------------------|
| Interstate Crashes | Non-interstate Crashes |
| ● Fatal | ● Fatal |
| ⊕ Serious Injury | ⊕ Serious Injury |

The blue gradient represents the density of all unrestrained-related crashes.

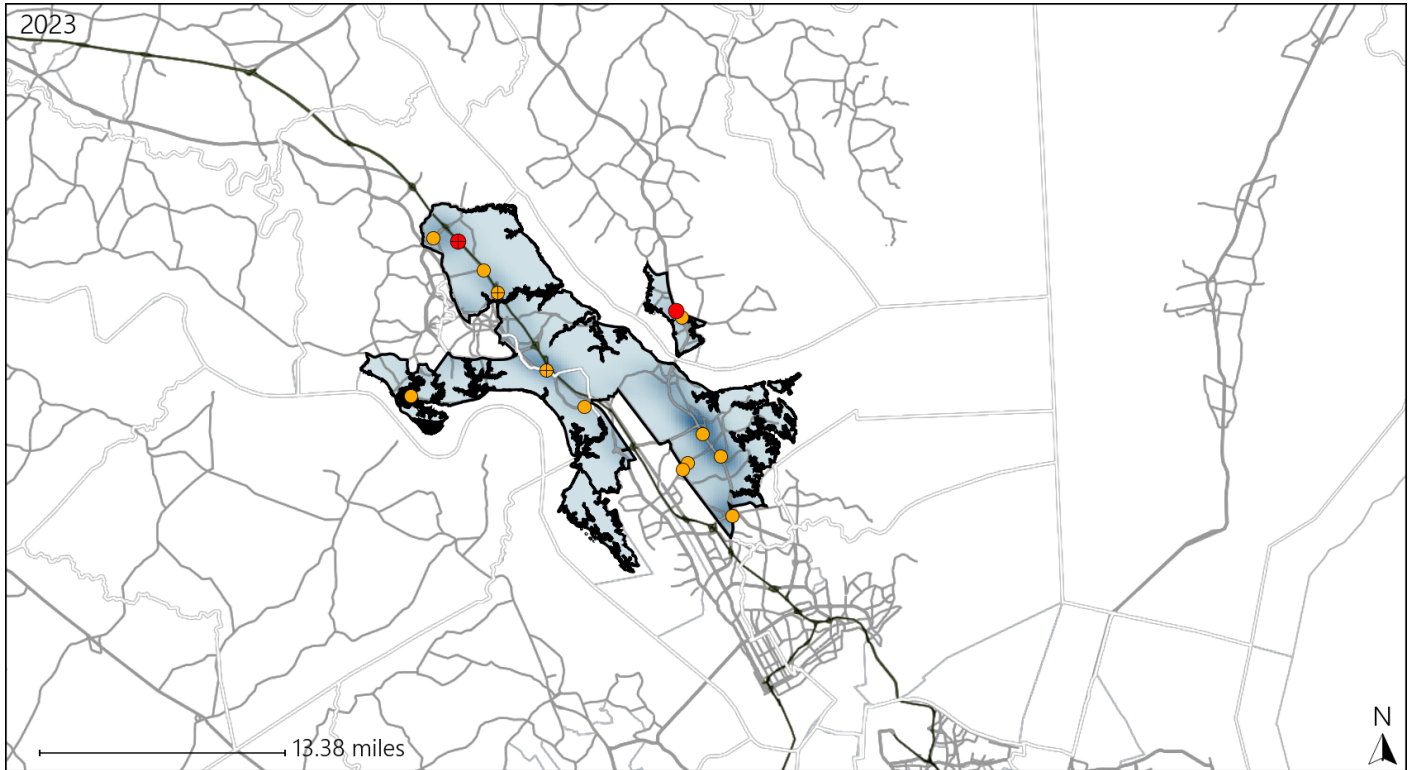


Available Crash Data - Calendar Year (CY)	CY 2020	CY 2021	CY 2022	CY 2023
Total Crashes	955	1104	1065	1105
Fatalities	10	8	11	14
Injuries	453	567	417	526
Unrestrained Fatalities	3	2	1	4
Percent of Unrestrained Fatalities to Total Fatalities	30%	25%	9%	29%
Unrestrained Injuries	27	26	23	39
Percent of Unrestrained Injuries to Total Injuries	6%	5%	6%	7%

Virginia House District 69 Distracted Driving Crash Statistics

Report Generated May, 2024

	Count	Highest Time Period(s)	Highest Day(s)	Highest Month(s)
Fatal Crashes	2	9:00pm - 11:59pm	Friday • Sunday	March
Resulting Fatalities	2	Midnight - 2:59am (100%)	(100%)	(100%)
Serious Injury Crashes	12	3:00pm - 5:59pm (33%)	Friday (25%)	June • March (34%)



House District 69 Distracted Driving-Related Crashes

Interstate Crashes

- Fatal
- Serious Injury

Non-interstate Crashes

- Fatal
- Serious Injury

The blue gradient represents the density of all distracted driving-related crashes.



Available Crash Data - Calendar Year (CY)	CY 2020	CY 2021	CY 2022	CY 2023
Total Crashes	955	1104	1065	1105
Fatal Crashes	10	7	9	14
Injury Crashes	304	345	280	326
Distracted Driving-Related Fatal Crashes	0	1	0	2
Percent of Distracted Driving-Related Fatal Crashes to Total Fatal Crashes	0%	14%	0%	14%
Distracted Driving-Related Injury Crashes	58	73	57	66
Percent of Distracted Driving-Related Injury Crashes to Total Injury Crashes	19%	21%	20%	20%