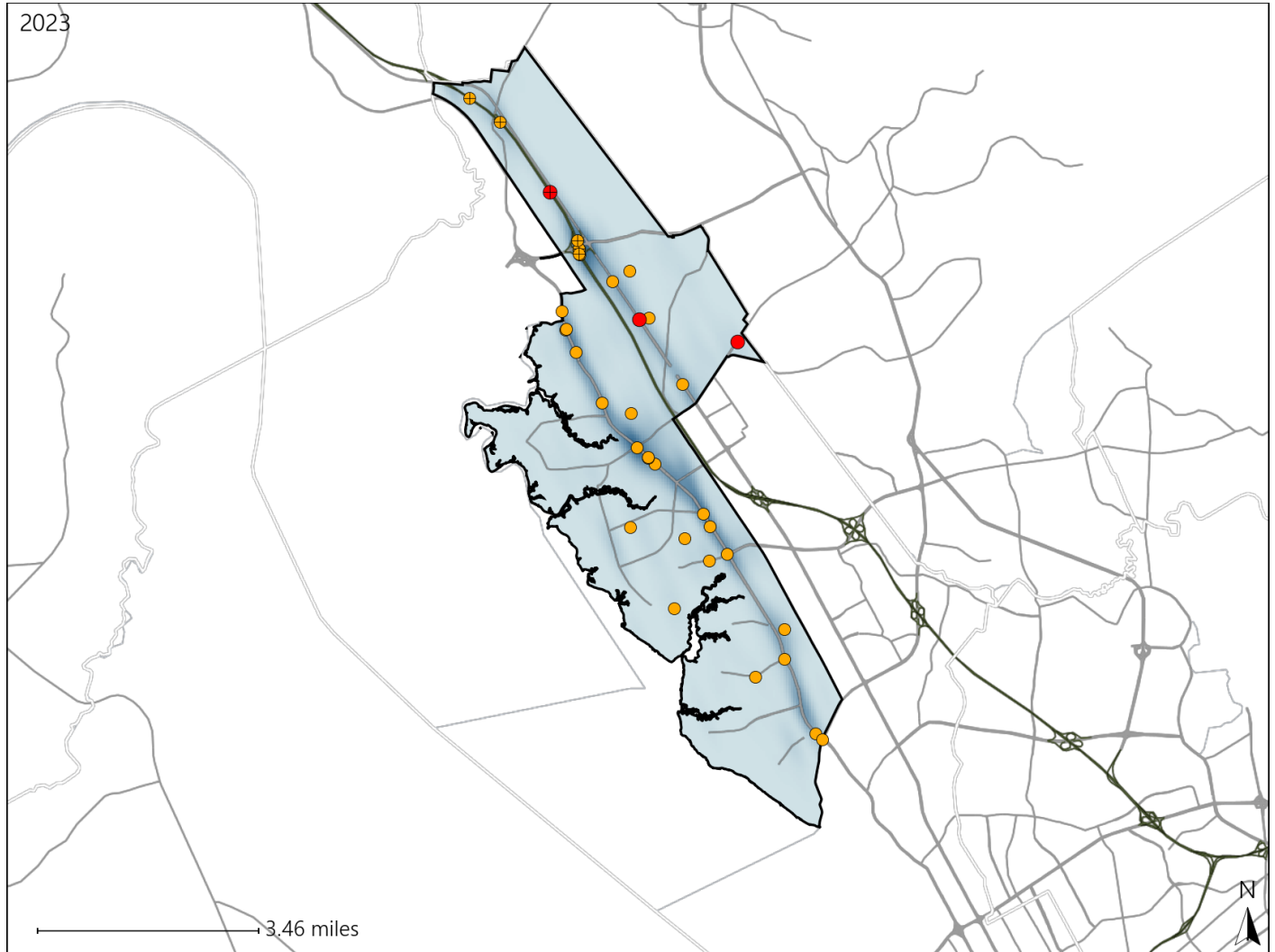


Virginia House District 70 Crash Statistics

Report Generated May, 2024

	Count	Highest Time Period(s)	Highest Day(s)	Highest Month(s)
Fatal Crashes	3	6:00pm - 8:59pm	Friday • Sunday	August • June
Resulting Fatalities	3	9:00pm - 11:59pm (66%)	(66%)	(66%)
Serious Injury Crashes	33	3:00pm - 5:59pm (33%)	Monday (21%)	January (15%)



House District 70 Crashes

Interstate Crashes

- Fatal
- Serious Injury

Non-interstate Crashes

- Fatal
- Serious Injury

The blue gradient represents the density of all crashes.

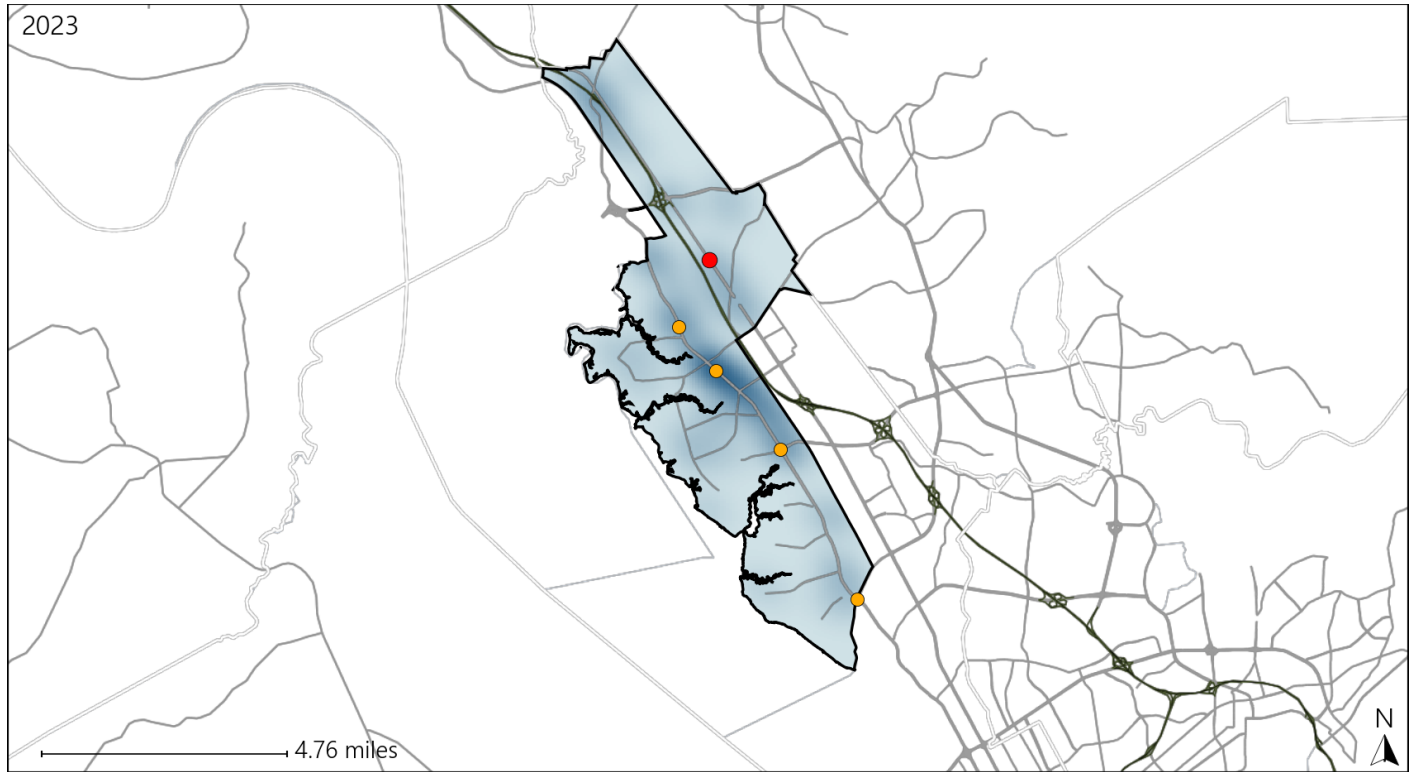


Available Crash Data - Calendar Year (CY)	CY 2020	CY 2021	CY 2022	CY 2023
Total Crashes	846	910	861	951
Fatal Crashes	5	7	3	3
Injury Crashes	380	368	265	251

Virginia House District 70 Alcohol Crash Statistics

Report Generated May, 2024

	Count	Highest Time Period(s)	Highest Day(s)	Highest Month(s)
Fatal Crashes	1	Midnight - 2:59am	Sunday	August
Resulting Fatalities	1	(100%)	(100%)	(100%)
Serious Injury Crashes	4	6:00pm - 8:59pm	Monday	July
		(50%)	(50%)	(50%)



House District 70 Alcohol-Related Crashes

Interstate Crashes Non-interstate Crashes
 ● Fatal ● Fatal
 ● Serious Injury ● Serious Injury

The blue gradient represents the density of all alcohol-related crashes.

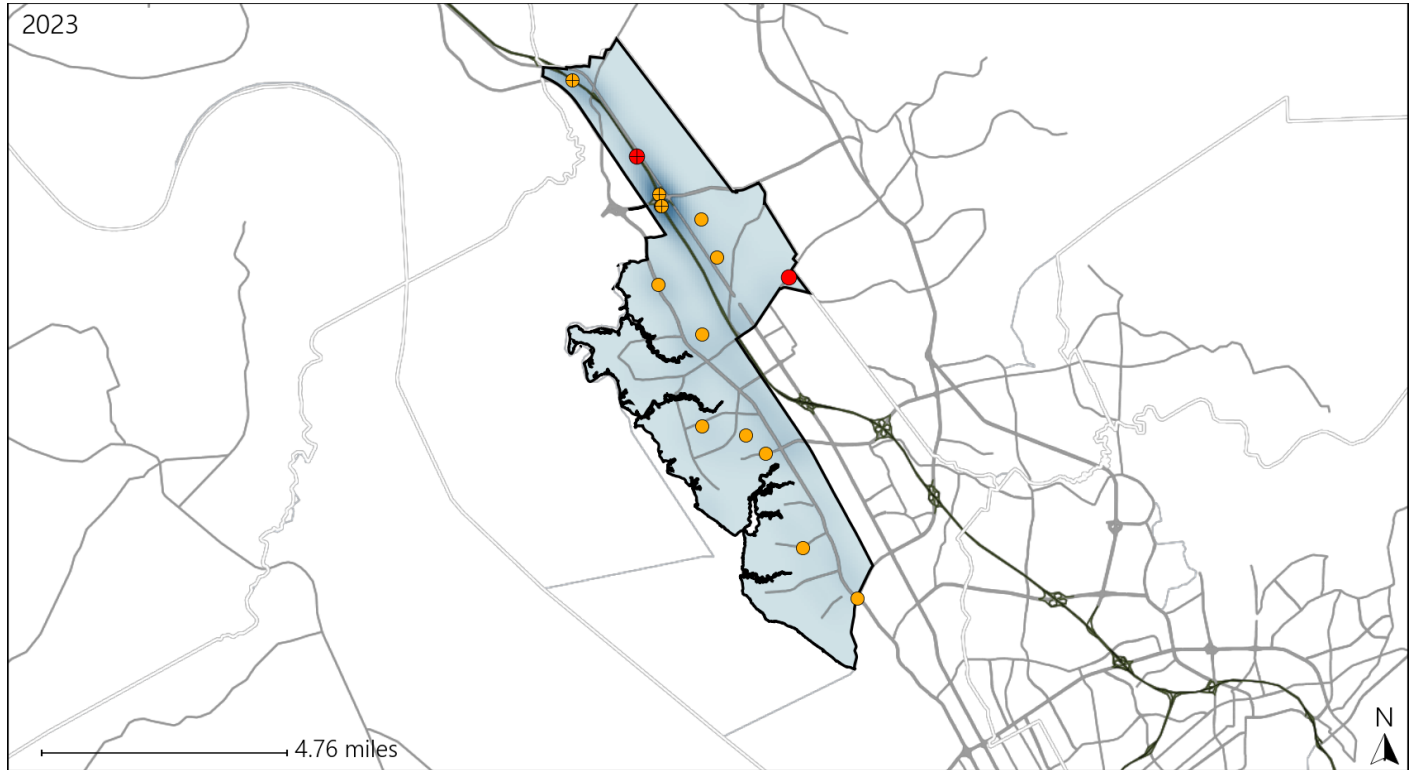


Available Crash Data - Calendar Year (CY)	CY 2020	CY 2021	CY 2022	CY 2023
Total Crashes	846	910	861	951
Fatal Crashes	5	7	3	3
Injury Crashes	380	368	265	251
Alcohol-Related Fatal Crashes	3	3	1	1
Percent of Alcohol-Related Fatal Crashes to Total Fatal Crashes	60%	43%	33%	33%
Alcohol-Related Injury Crashes	30	26	24	23
Percent of Alcohol-Related Injury Crashes to Total Injury Crashes	8%	7%	9%	9%

Virginia House District 70 Speed Crash Statistics

Report Generated May, 2024

	Count	Highest Time Period(s)	Highest Day(s)	Highest Month(s)
Fatal Crashes	2	6:00pm - 8:59pm	Friday • Thursday	June • October
Resulting Fatalities	2	9:00pm - 11:59pm (100%)	(100%)	(100%)
Serious Injury Crashes	13	3:00pm - 5:59pm (46%)	Saturday • Wednesday (46%)	April (23%)



House District 70 Speed-Related Crashes

Interstate Crashes Non-interstate Crashes
 ● Fatal ● Fatal
 ● Serious Injury ● Serious Injury

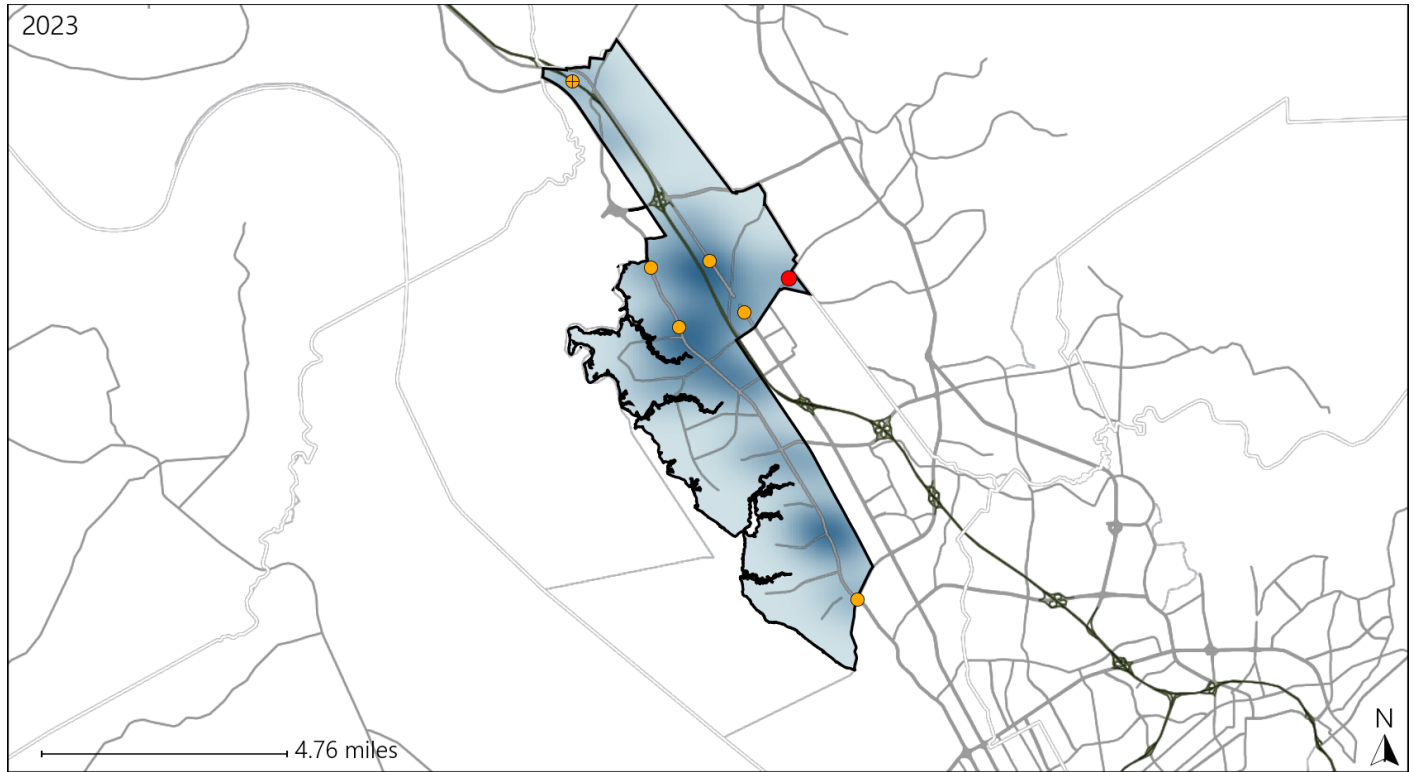
The blue gradient represents the density of all speed-related crashes.

Available Crash Data - Calendar Year (CY)	CY 2020	CY 2021	CY 2022	CY 2023
Total Crashes	846	910	861	951
Fatal Crashes	5	7	3	3
Injury Crashes	380	368	265	251
Speed-Related Fatal Crashes	4	1	2	2
Percent of Speed-Related Fatal Crashes to Total Fatal Crashes	80%	14%	67%	67%
Speed-Related Injury Crashes	72	75	52	54
Percent of Speed-Related Injury Crashes to Total Injury Crashes	19%	20%	20%	22%

Virginia House District 70 Unrestrained Crash Statistics

Report Generated May, 2024

	Count	Highest Time Period(s)	Highest Day(s)	Highest Month(s)
Fatal Crashes	1	6:00pm - 8:59pm	Friday	October
Unrestrained Fatalities	1	(100%)	(100%)	(100%)
Serious Injury Crashes	6	9:00pm - 11:59pm	Friday	May
		(33%)	(33%)	(33%)



House District 70 Unrestrained-Related Crashes

Interstate Crashes

Non-interstate Crashes

- Fatal
- Serious Injury

- Fatal
- Serious Injury

The blue gradient represents the density of all unrestrained-related crashes.

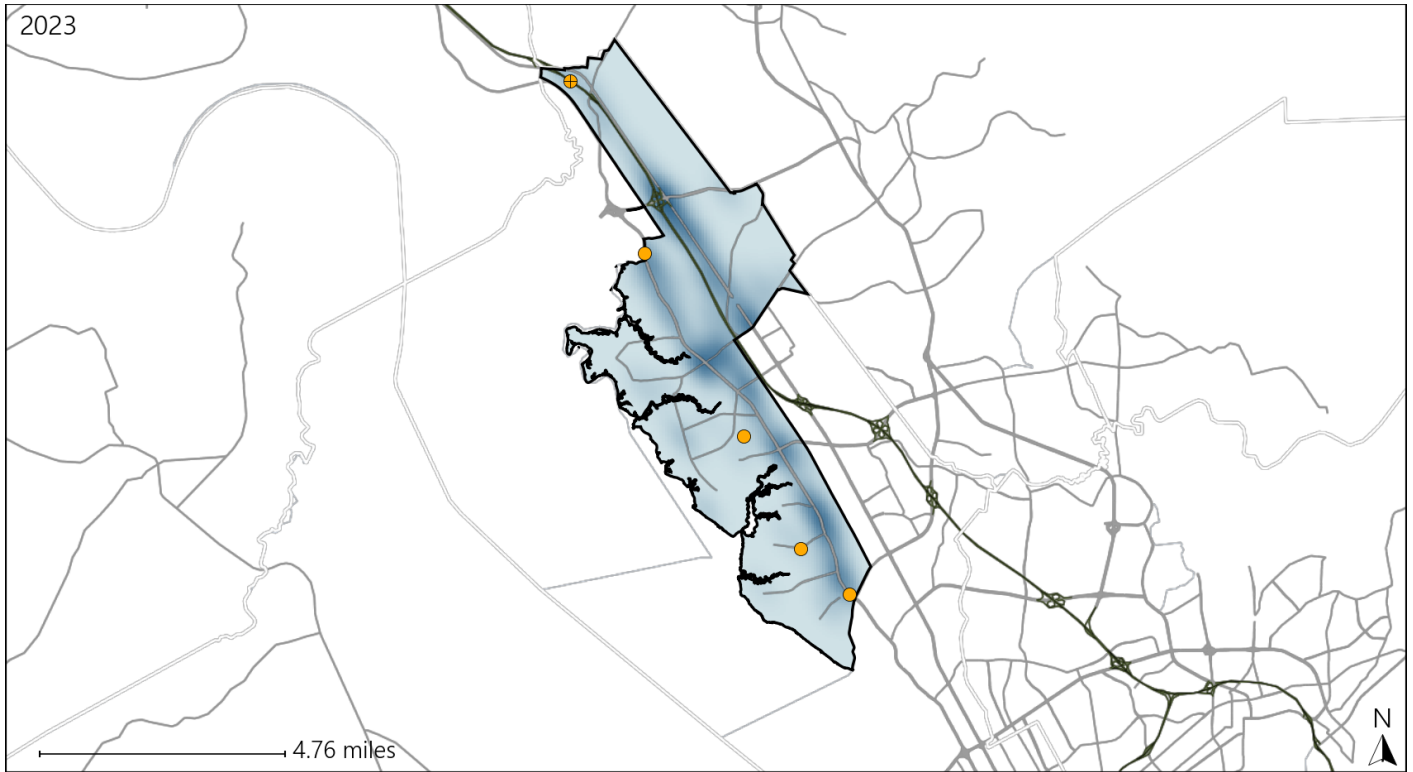


Available Crash Data - Calendar Year (CY)	CY 2020	CY 2021	CY 2022	CY 2023
Total Crashes	846	910	861	951
Fatalities	5	7	4	3
Injuries	534	559	419	433
Unrestrained Fatalities	1	2	2	1
Percent of Unrestrained Fatalities to Total Fatalities	20%	29%	50%	33%
Unrestrained Injuries	22	34	14	27
Percent of Unrestrained Injuries to Total Injuries	4%	6%	3%	6%

Virginia House District 70 Distracted Driving Crash Statistics

Report Generated May, 2024

	Count	Highest Time Period(s)	Highest Day(s)	Highest Month(s)
Fatal Crashes	0	-	-	-
Resulting Fatalities	0	-	-	-
Serious Injury Crashes	5	3:00pm - 5:59pm (60%)	Friday (40%)	February (40%)



House District 70 Distracted Driving-Related Crashes

- | | |
|--|--|
| Interstate Crashes | Non-interstate Crashes |
| ● Fatal | ● Fatal |
| ● Serious Injury | ● Serious Injury |

The blue gradient represents the density of all distracted driving-related crashes.



Available Crash Data - Calendar Year (CY)	CY 2020	CY 2021	CY 2022	CY 2023
Total Crashes	846	910	861	951
Fatal Crashes	5	7	3	3
Injury Crashes	380	368	265	251
Distracted Driving-Related Fatal Crashes	0	0	0	0
Percent of Distracted Driving-Related Fatal Crashes to Total Fatal Crashes	0%	0%	0%	0%
Distracted Driving-Related Injury Crashes	111	106	52	46
Percent of Distracted Driving-Related Injury Crashes to Total Injury Crashes	29%	29%	20%	18%