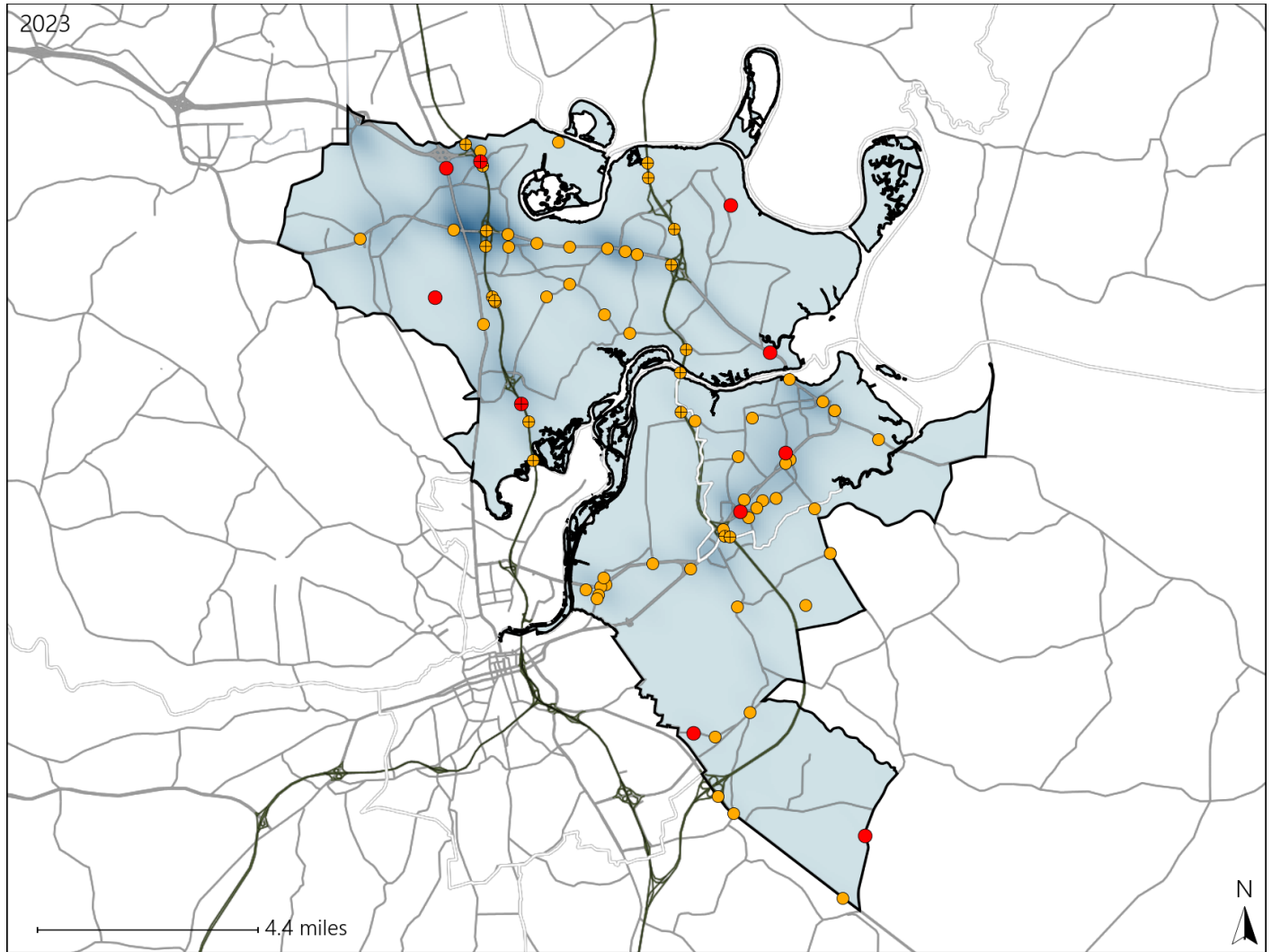


# Virginia House District 75 Crash Statistics

Report Generated May, 2024

	Count	Highest Time Period(s)	Highest Day(s)	Highest Month(s)
<b>Fatal Crashes</b>	<b>10</b>	3:00am - 5:59am	Thursday	August
<b>Resulting Fatalities</b>	<b>11</b>	(40%)	(40%)	(30%)
<b>Serious Injury Crashes</b>	<b>68</b>	3:00pm - 5:59pm	Saturday	October
		(18%)	(21%)	(15%)



### House District 75 Crashes

Interstate Crashes

- Fatal
- Serious Injury

Non-interstate Crashes

- Fatal
- Serious Injury

The blue gradient represents the density of all crashes.

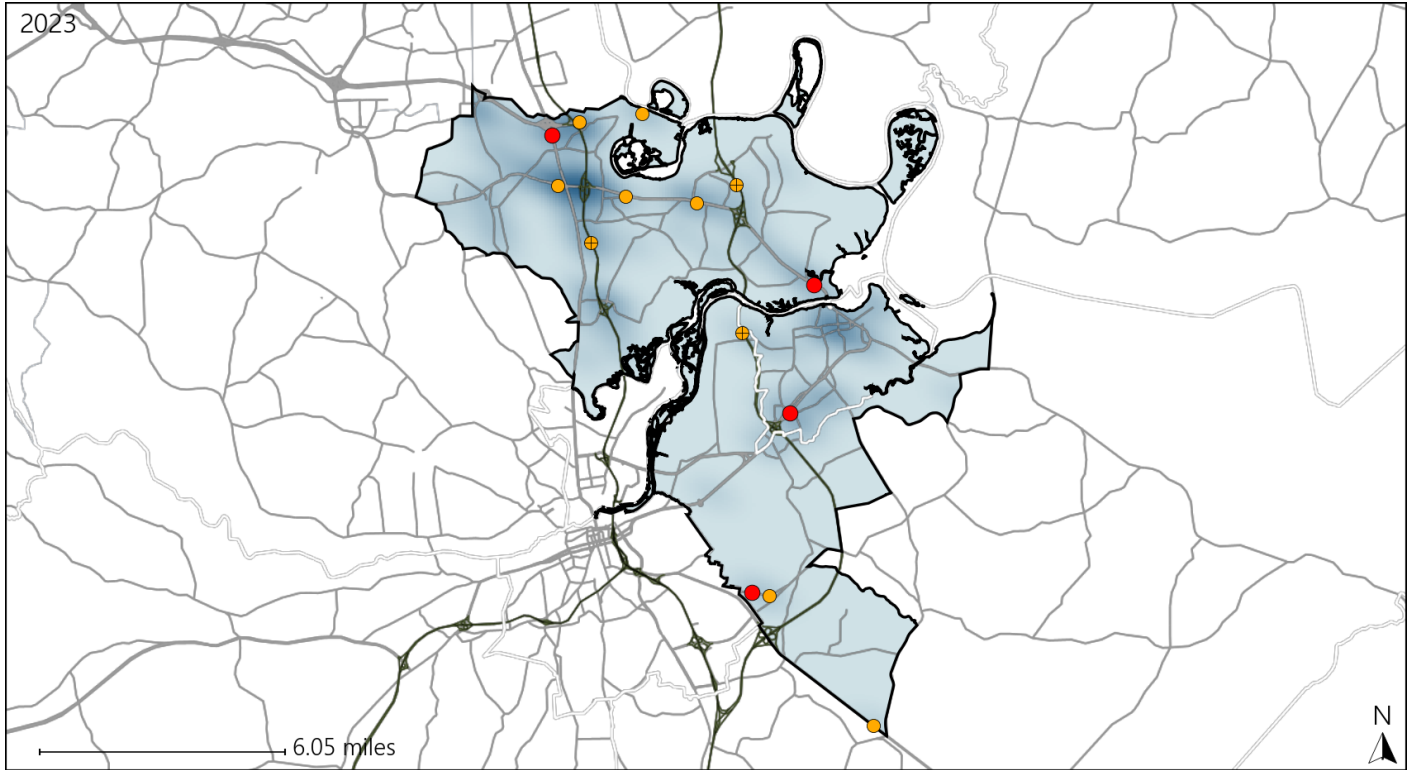


Available Crash Data - Calendar Year (CY)	CY 2020	CY 2021	CY 2022	CY 2023
Total Crashes	1431	1578	1692	1767
Fatal Crashes	6	12	10	10
Injury Crashes	641	718	750	727

# Virginia House District 75 Alcohol Crash Statistics

Report Generated May, 2024

	Count	Highest Time Period(s)	Highest Day(s)	Highest Month(s)
<b>Fatal Crashes</b>	<b>4</b>	<b>3:00am - 5:59am</b>	<b>Friday • Saturday</b>	<b>July</b>
<b>Resulting Fatalities</b>	<b>4</b>	(50%)	(50%)	(50%)
<b>Serious Injury Crashes</b>	<b>10</b>	<b>9:00pm - 11:59pm</b>	<b>Thursday</b>	<b>April</b>
		(30%)	(30%)	(30%)



## House District 75 Alcohol-Related Crashes

Interstate Crashes

- Fatal
- Serious Injury

Non-interstate Crashes

- Fatal
- Serious Injury

The blue gradient represents the density of all alcohol-related crashes.

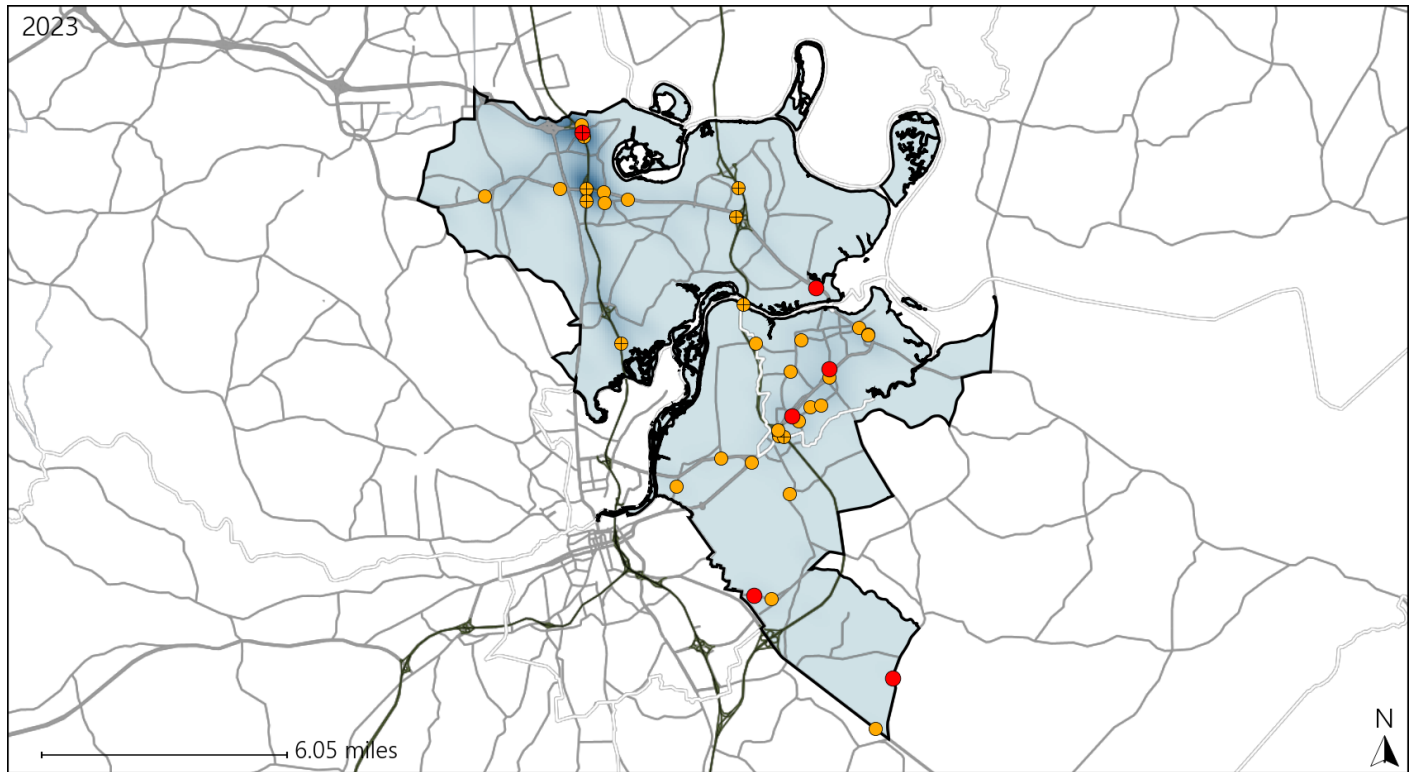


Available Crash Data - Calendar Year (CY)	CY 2020	CY 2021	CY 2022	CY 2023
Total Crashes	1431	1578	1692	1767
Fatal Crashes	6	12	10	10
Injury Crashes	641	718	750	727
Alcohol-Related Fatal Crashes	1	3	3	4
Percent of Alcohol-Related Fatal Crashes to Total Fatal Crashes	17%	25%	30%	40%
Alcohol-Related Injury Crashes	46	71	50	44
Percent of Alcohol-Related Injury Crashes to Total Injury Crashes	7%	10%	7%	6%

# Virginia House District 75 Speed Crash Statistics

Report Generated May, 2024

	Count	Highest Time Period(s)	Highest Day(s)	Highest Month(s)
<b>Fatal Crashes</b>	<b>6</b>	<b>3:00am - 5:59am</b>	<b>Friday • Sunday</b>	<b>July</b>
<b>Resulting Fatalities</b>	<b>7</b>	(50%)	(66%)	(33%)
<b>Serious Injury Crashes</b>	<b>32</b>	<b>9:00am - 11:59am</b> <b>Midnight - 2:59am</b>	<b>Saturday • Thursday</b>	<b>October</b>
		(38%)	(50%)	(19%)



## House District 75 Speed-Related Crashes

Interstate Crashes

Non-interstate Crashes

- Fatal
- ⊕ Serious Injury

- Fatal
- Serious Injury

The blue gradient represents the density of all speed-related crashes.

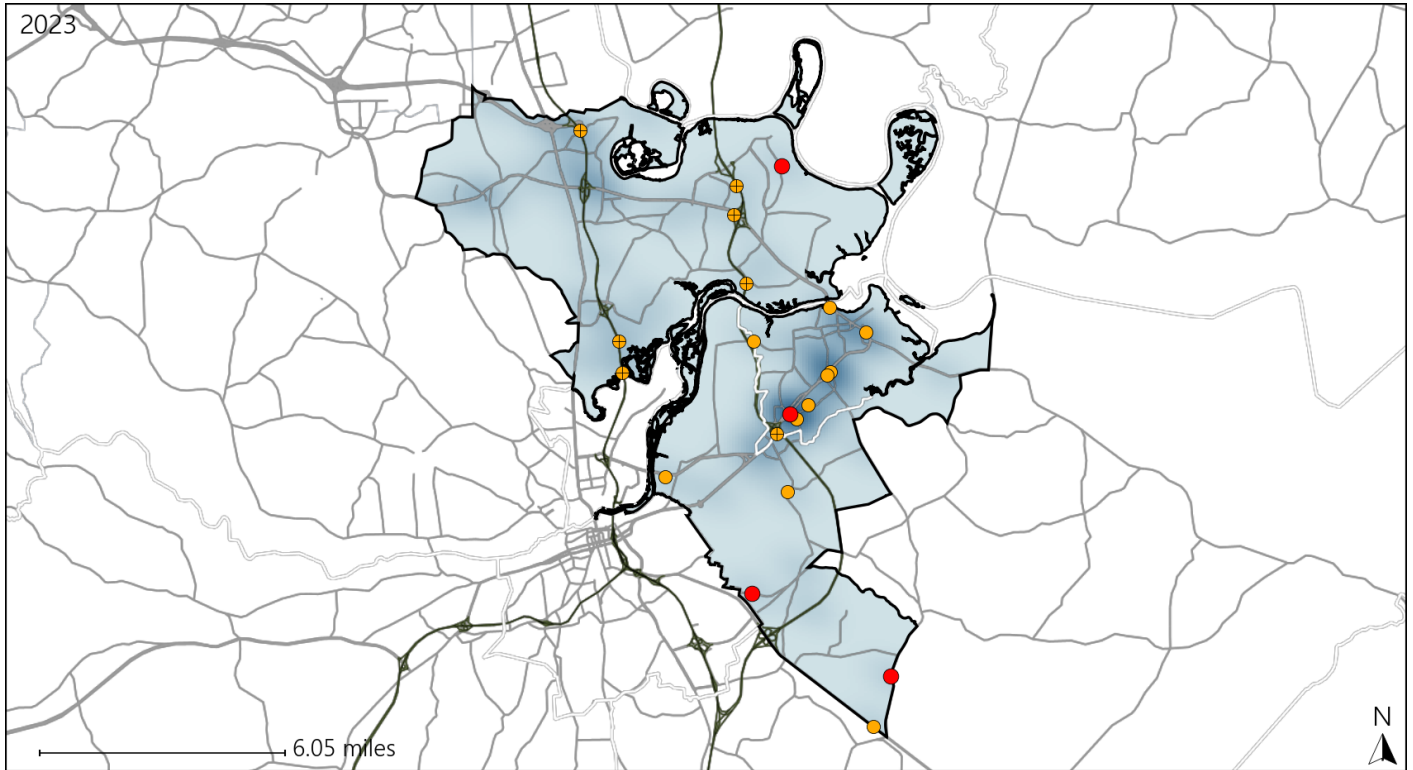


Available Crash Data - Calendar Year (CY)	CY 2020	CY 2021	CY 2022	CY 2023
Total Crashes	1431	1578	1692	1767
Fatal Crashes	6	12	10	10
Injury Crashes	641	718	750	727
Speed-Related Fatal Crashes	5	6	8	6
Percent of Speed-Related Fatal Crashes to Total Fatal Crashes	83%	50%	80%	60%
Speed-Related Injury Crashes	116	146	152	153
Percent of Speed-Related Injury Crashes to Total Injury Crashes	18%	20%	20%	21%

# Virginia House District 75 Unrestrained Crash Statistics

Report Generated May, 2024

	Count	Highest Time Period(s)	Highest Day(s)	Highest Month(s)
<b>Fatal Crashes</b>	<b>4</b>	<b>3:00am - 5:59am</b>	<b>Sunday</b>	<b>July</b>
<b>Unrestrained Fatalities</b>	<b>5</b>	<b>6:00pm - 8:59pm</b> (50%)	<b>Sunday</b> (50%)	<b>July</b> (50%)
<b>Serious Injury Crashes</b>	<b>17</b>	<b>6:00am - 8:59am</b> (24%)	<b>Thursday</b> (29%)	<b>March</b> (24%)



## House District 75 Unrestrained-Related Crashes

Interstate Crashes

Non-interstate Crashes

- Fatal
- Serious Injury

- Fatal
- Serious Injury

The blue gradient represents the density of all unrestrained-related crashes.

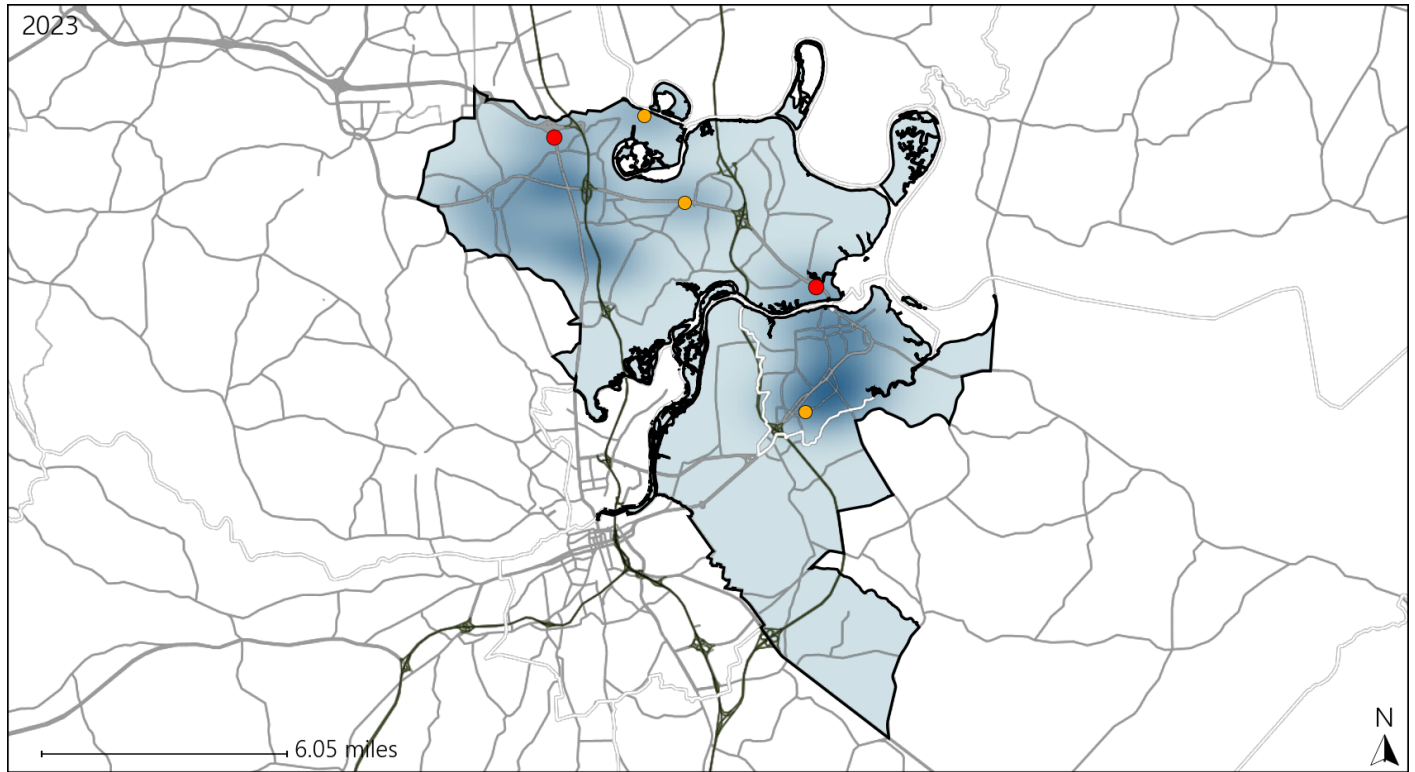


Available Crash Data - Calendar Year (CY)	CY 2020	CY 2021	CY 2022	CY 2023
Total Crashes	1431	1578	1692	1767
Fatalities	7	13	11	11
Injuries	1154	1314	1307	1345
Unrestrained Fatalities	5	4	3	5
Percent of Unrestrained Fatalities to Total Fatalities	71%	31%	27%	45%
Unrestrained Injuries	72	71	67	91
Percent of Unrestrained Injuries to Total Injuries	6%	5%	5%	7%

# Virginia House District 75 Pedestrian Crash Statistics

Report Generated May, 2024

	Count	Highest Time Period(s)	Highest Day(s)	Highest Month(s)
<b>Fatal Crashes</b>	<b>2</b>	<b>3:00am - 5:59am</b>	<b>Saturday • Thursday</b>	<b>August • February</b>
<b>Pedestrian Fatalities</b>	<b>2</b>	<b>(100%)</b>	<b>(100%)</b>	<b>(100%)</b>
<b>Serious Injury Crashes</b>	<b>3</b>	<b>Midnight - 2:59am</b>	<b>Friday • Saturday</b>	<b>August • December</b>
		<b>(67%)</b>	<b>(66%)</b>	<b>(66%)</b>



## House District 75 Pedestrian-Related Crashes

- |                    |                        |
|--------------------|------------------------|
| Interstate Crashes | Non-interstate Crashes |
| Fatal              | Fatal                  |
| Serious Injury     | Serious Injury         |

The blue gradient represents the density of all pedestrian-related crashes.

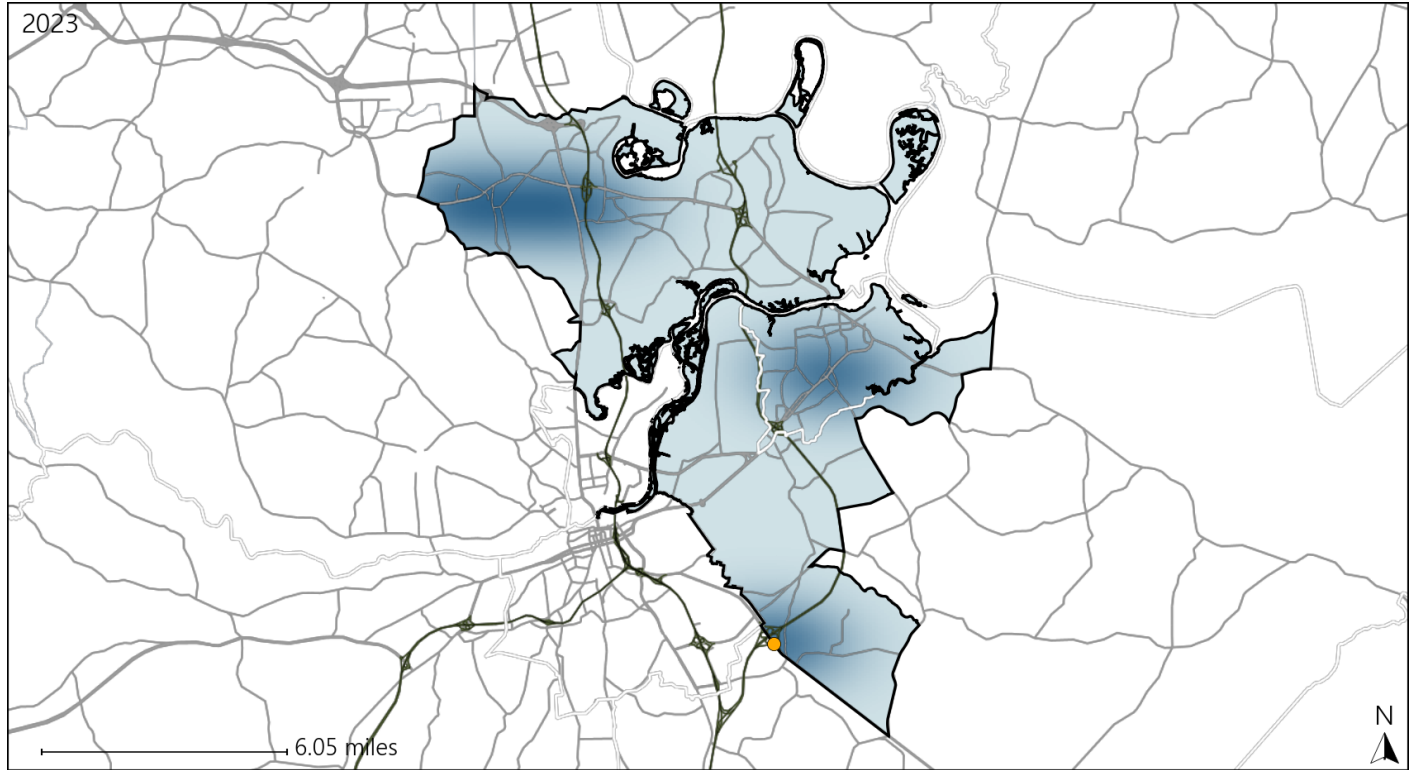


Available Crash Data - Calendar Year (CY)	CY 2020	CY 2021	CY 2022	CY 2023
Total Crashes	1431	1578	1692	1767
Fatal Crashes	6	12	10	10
Injury Crashes	641	718	750	727
Pedestrian-Related Fatal Crashes	1	1	3	2
Percent of Pedestrian-Related Fatal Crashes to Total Fatal Crashes	17%	8%	30%	20%
Pedestrian-Related Injury Crashes	8	15	9	14
Percent of Pedestrian-Related Injury Crashes to Total Injury Crashes	1%	2%	1%	2%

# Virginia House District 75 Bicycle Crash Statistics

Report Generated May, 2024

	Count	Highest Time Period(s)	Highest Day(s)	Highest Month(s)
<b>Fatal Crashes</b>	0	-	-	-
<b>Bicycle Fatalities</b>	0	-	-	-
<b>Serious Injury Crashes</b>	1	6:00am - 8:59am (100%)	Thursday (100%)	February (100%)



## House District 75 Bicycle-Related Crashes

Interstate Crashes                      Non-interstate Crashes  
 ● Fatal                                      ● Fatal  
 ● Serious Injury                          ● Serious Injury

The blue gradient represents the density of all bicycle-related crashes.

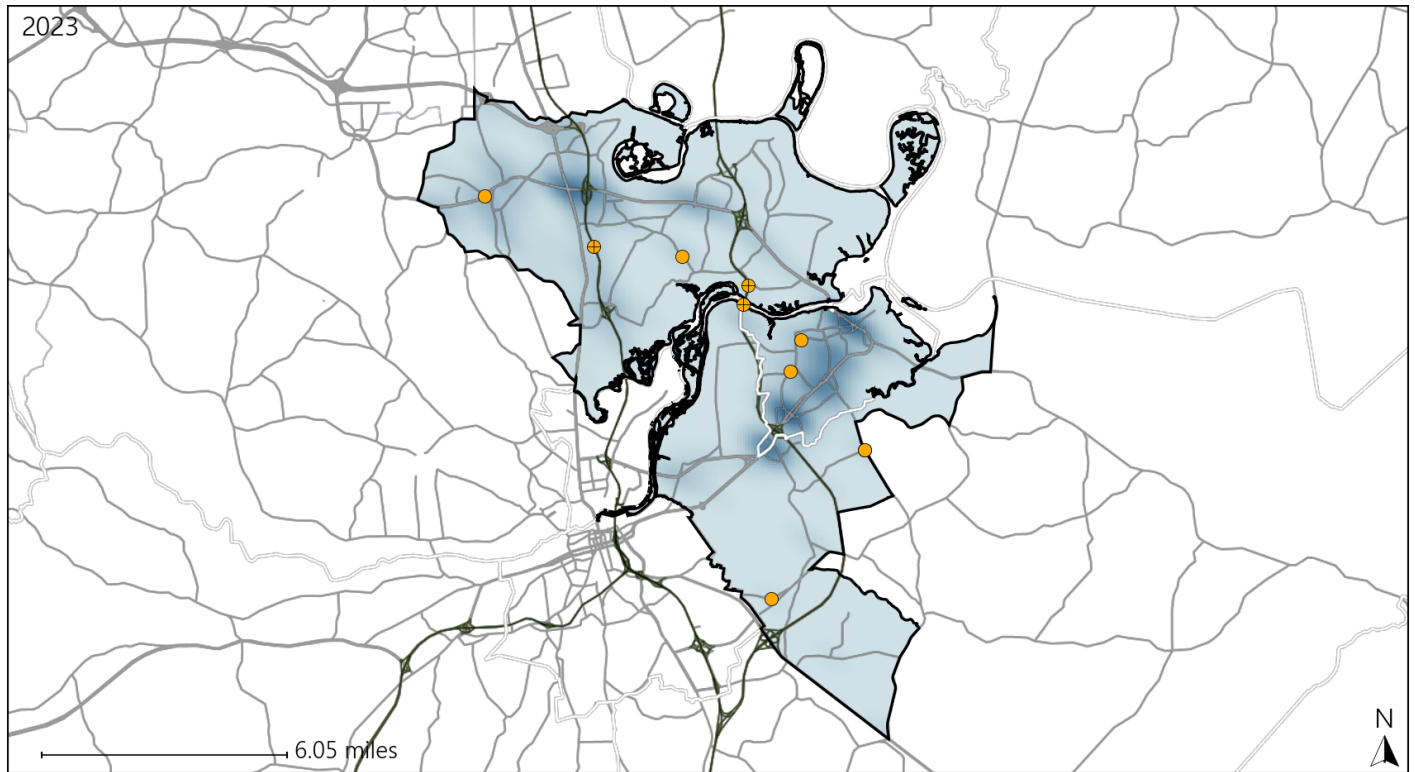


Available Crash Data - Calendar Year (CY)	CY 2020	CY 2021	CY 2022	CY 2023
Total Crashes	1431	1578	1692	1767
Fatal Crashes	6	12	10	10
Injury Crashes	641	718	750	727
Bicycle-Related Fatal Crashes	0	0	0	0
Percent of Bicycle-Related Fatal Crashes to Total Fatal Crashes	0%	0%	0%	0%
Bicycle-Related Injury Crashes	2	6	4	4
Percent of Bicycle-Related Injury Crashes to Total Injury Crashes	0%	1%	1%	1%

# Virginia House District 75 Distracted Driving Crash Statistics

Report Generated May, 2024

	Count	Highest Time Period(s)	Highest Day(s)	Highest Month(s)
<b>Fatal Crashes</b>	<b>0</b>	-	-	-
<b>Resulting Fatalities</b>	<b>0</b>	-	-	-
<b>Serious Injury Crashes</b>	<b>10</b>	6:00pm - 8:59pm 9:00am - 11:59am (40%)	Thursday (30%)	October (30%)



## House District 75 Distracted Driving-Related Crashes

- |                    |                        |
|--------------------|------------------------|
| Interstate Crashes | Non-interstate Crashes |
| ● Fatal            | ● Fatal                |
| ⊕ Serious Injury   | ● Serious Injury       |

The blue gradient represents the density of all distracted driving-related crashes.



Available Crash Data - Calendar Year (CY)	CY 2020	CY 2021	CY 2022	CY 2023
Total Crashes	1431	1578	1692	1767
Fatal Crashes	6	12	10	10
Injury Crashes	641	718	750	727
Distracted Driving-Related Fatal Crashes	1	4	3	0
Percent of Distracted Driving-Related Fatal Crashes to Total Fatal Crashes	17%	33%	30%	0%
Distracted Driving-Related Injury Crashes	130	128	147	164
Percent of Distracted Driving-Related Injury Crashes to Total Injury Crashes	20%	18%	20%	23%