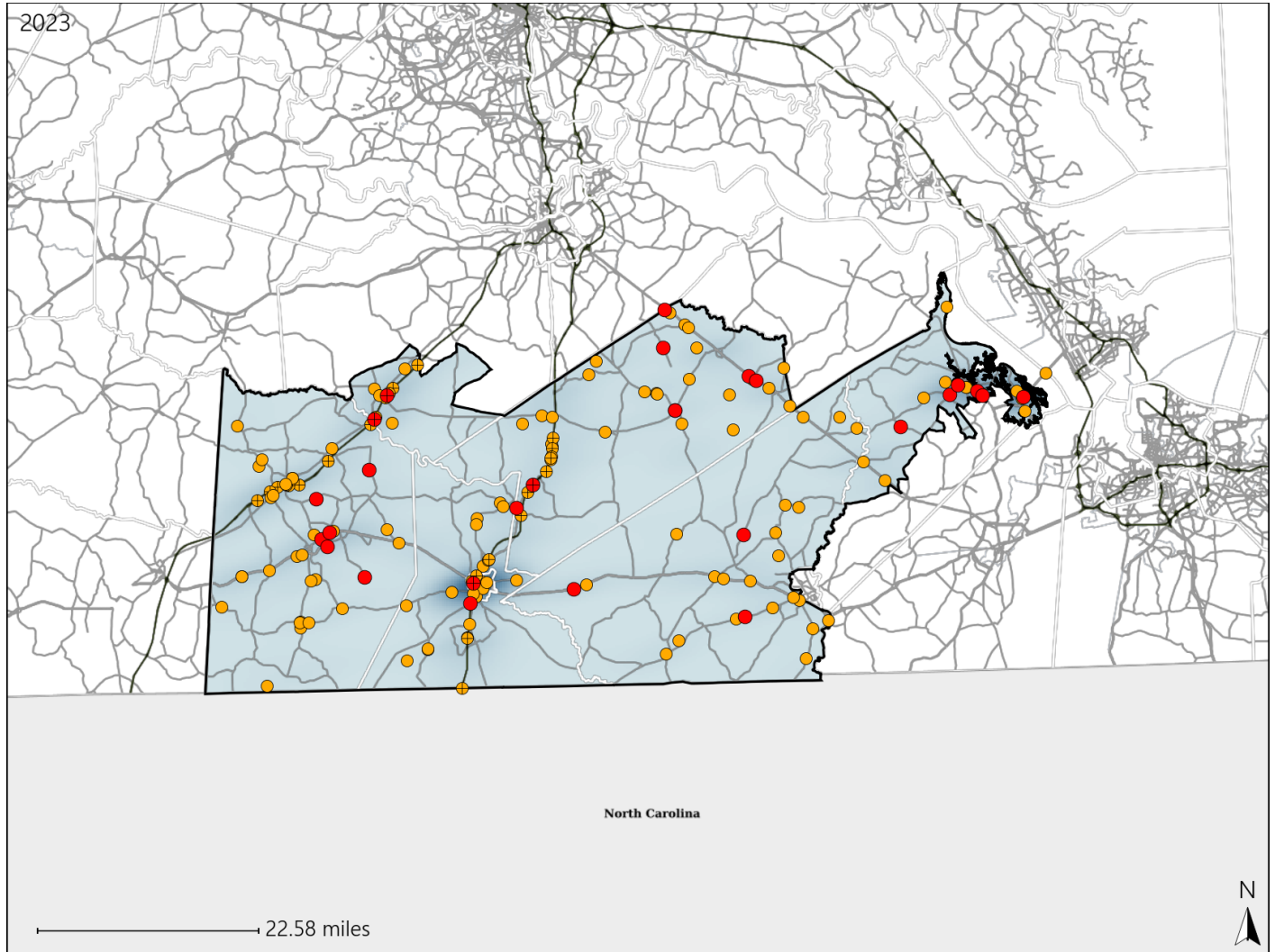


Virginia House District 83 Crash Statistics

Report Generated May, 2024

	Count	Highest Time Period(s)	Highest Day(s)	Highest Month(s)
Fatal Crashes	27	6:00am - 8:59am	Saturday	December
Resulting Fatalities	28	Noon - 2:59pm (38%)	(30%)	(19%)
Serious Injury Crashes	142	3:00pm - 5:59pm (24%)	Tuesday (17%)	March - May (24%)



House District 83 Crashes

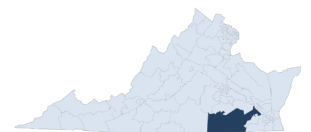
Interstate Crashes

- Fatal
- Serious Injury

Non-interstate Crashes

- Fatal
- Serious Injury

The blue gradient represents the density of all crashes.

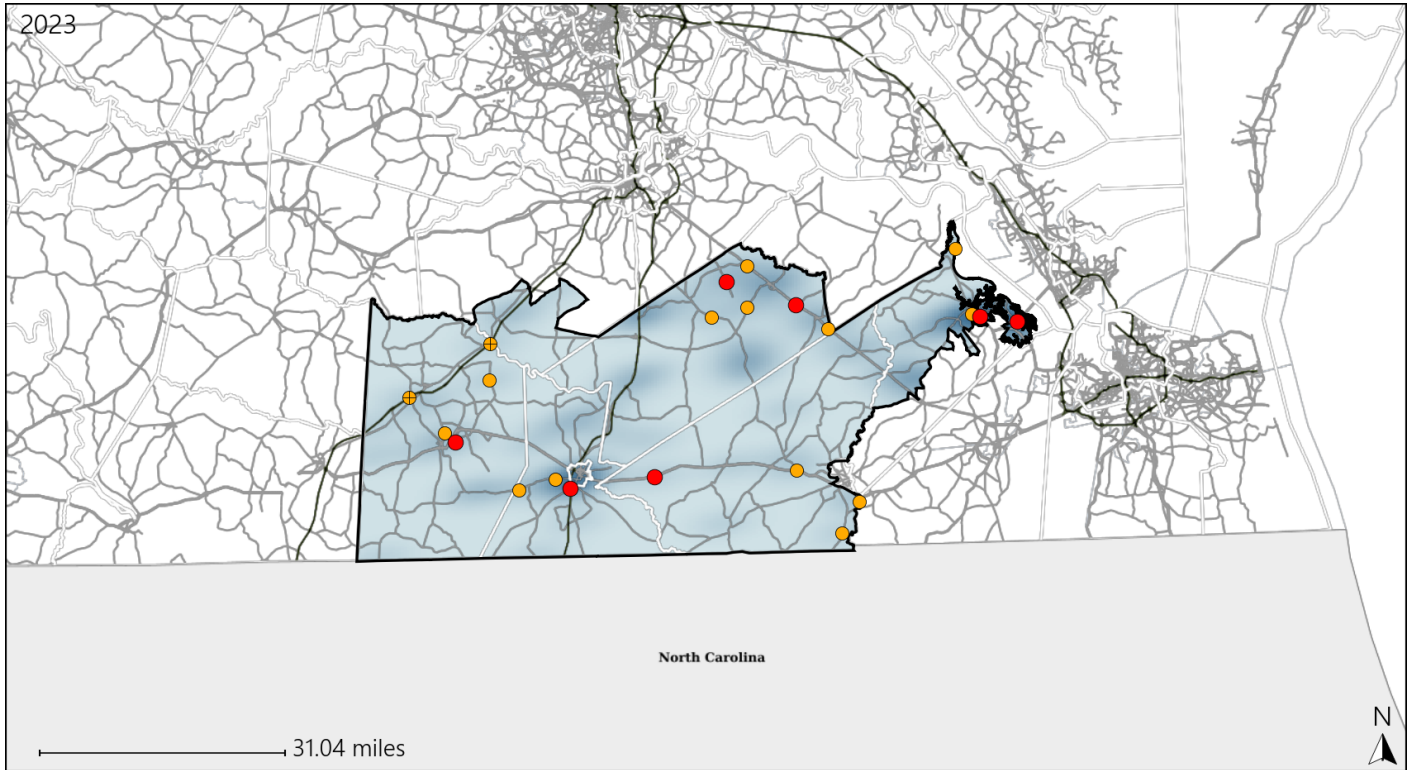


Available Crash Data - Calendar Year (CY)	CY 2020	CY 2021	CY 2022	CY 2023
Total Crashes	1717	1786	1600	1723
Fatal Crashes	22	39	27	27
Injury Crashes	588	572	555	590

Virginia House District 83 Alcohol Crash Statistics

Report Generated May, 2024

	Count	Highest Time Period(s)	Highest Day(s)	Highest Month(s)
Fatal Crashes	7	3:00am - 5:59am	Friday	April • June
Resulting Fatalities	7	9:00pm - 11:59pm (58%)	(43%)	(58%)
Serious Injury Crashes	15	Midnight - 2:59am (33%)	Sunday (33%)	March (27%)



House District 83 Alcohol-Related Crashes

Interstate Crashes

Non-interstate Crashes

- Fatal
- Serious Injury

- Fatal
- Serious Injury

The blue gradient represents the density of all alcohol-related crashes.

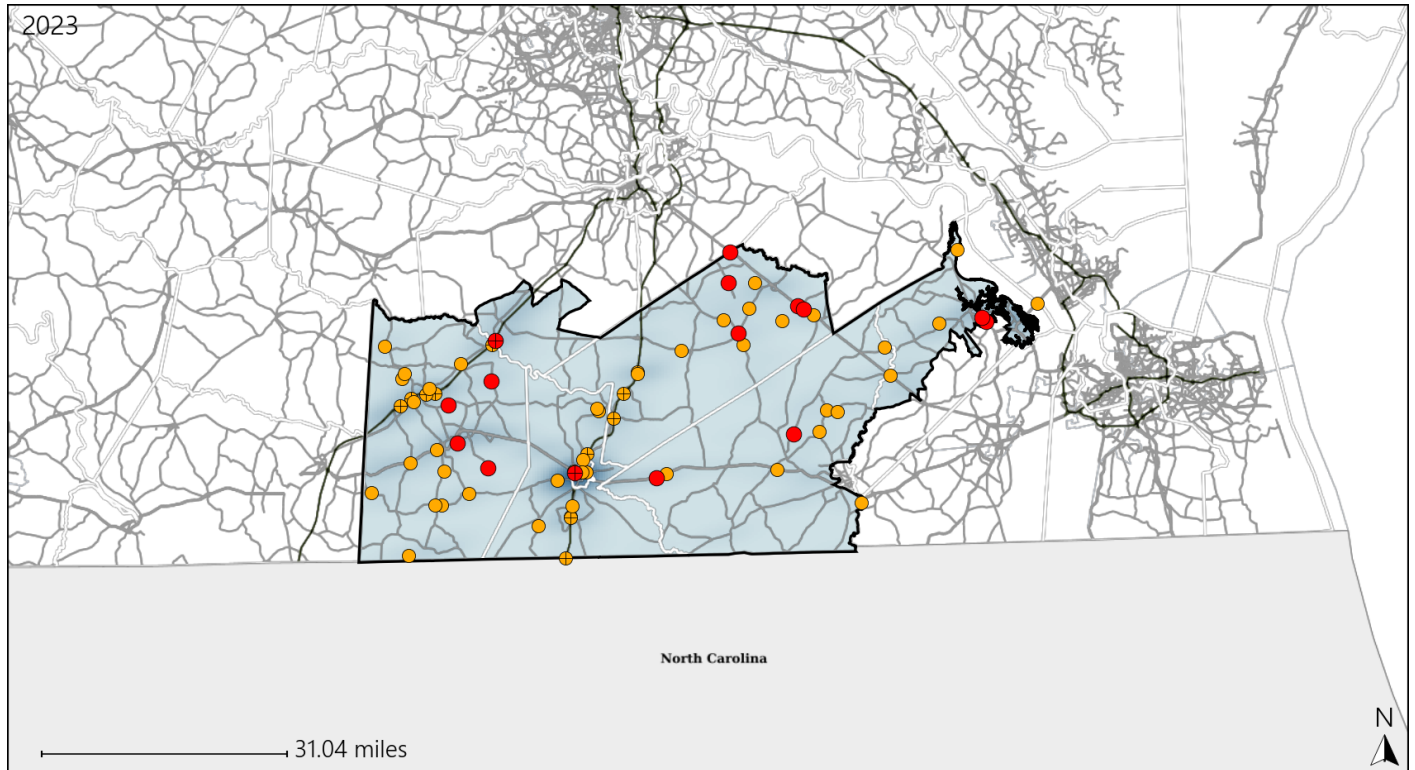


Available Crash Data - Calendar Year (CY)	CY 2020	CY 2021	CY 2022	CY 2023
Total Crashes	1717	1786	1600	1723
Fatal Crashes	22	39	27	27
Injury Crashes	588	572	555	590
Alcohol-Related Fatal Crashes	4	8	5	7
Percent of Alcohol-Related Fatal Crashes to Total Fatal Crashes	18%	21%	19%	26%
Alcohol-Related Injury Crashes	55	47	32	43
Percent of Alcohol-Related Injury Crashes to Total Injury Crashes	9%	8%	6%	7%

Virginia House District 83 Speed Crash Statistics

Report Generated May, 2024

	Count	Highest Time Period(s)	Highest Day(s)	Highest Month(s)
Fatal Crashes	15	6:00pm - 8:59pm	Saturday	July
Resulting Fatalities	15	(27%)	(33%)	(27%)
Serious Injury Crashes	55	6:00pm - 8:59pm	Tuesday	April - December
		(22%)	(24%)	(22%)



House District 83 Speed-Related Crashes

Interstate Crashes

Non-interstate Crashes

- Fatal
- Serious Injury

- Fatal
- Serious Injury

The blue gradient represents the density of all speed-related crashes.

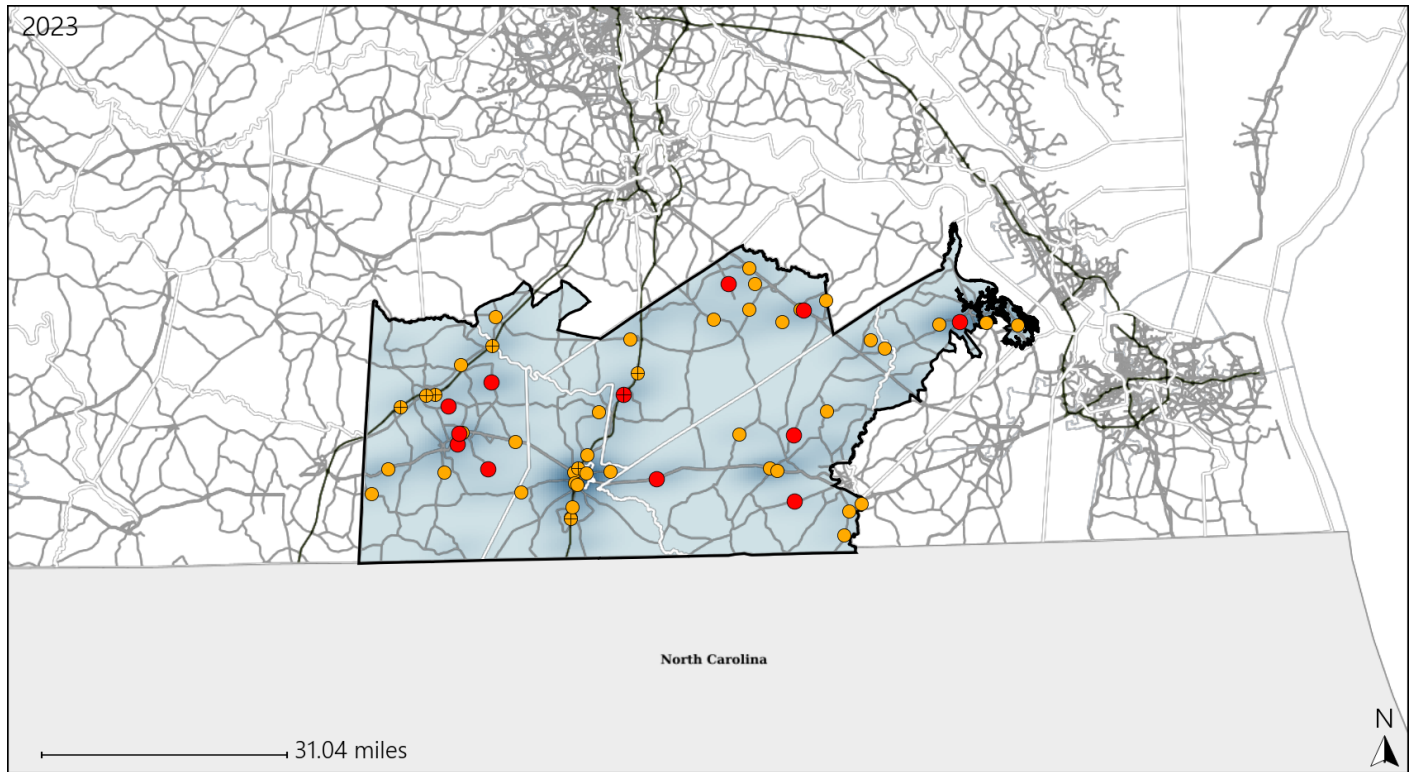


Available Crash Data - Calendar Year (CY)	CY 2020	CY 2021	CY 2022	CY 2023
Total Crashes	1717	1786	1600	1723
Fatal Crashes	22	39	27	27
Injury Crashes	588	572	555	590
Speed-Related Fatal Crashes	11	19	14	15
Percent of Speed-Related Fatal Crashes to Total Fatal Crashes	50%	49%	52%	56%
Speed-Related Injury Crashes	164	166	138	169
Percent of Speed-Related Injury Crashes to Total Injury Crashes	28%	29%	25%	29%

Virginia House District 83 Unrestrained Crash Statistics

Report Generated May, 2024

	Count	Highest Time Period(s)	Highest Day(s)	Highest Month(s)
Fatal Crashes	12	6:00am - 8:59am	Friday • Saturday	December • November
Unrestrained Fatalities	12	(33%)	(50%)	(50%)
Serious Injury Crashes	46	3:00pm - 5:59pm Midnight - 2:59am	Saturday • Tuesday	March
		(34%)	(40%)	(13%)



House District 83 Unrestrained-Related Crashes

Interstate Crashes

- Fatal
- ⊕ Serious Injury

Non-interstate Crashes

- Fatal
- Serious Injury

The blue gradient represents the density of all unrestrained-related crashes.

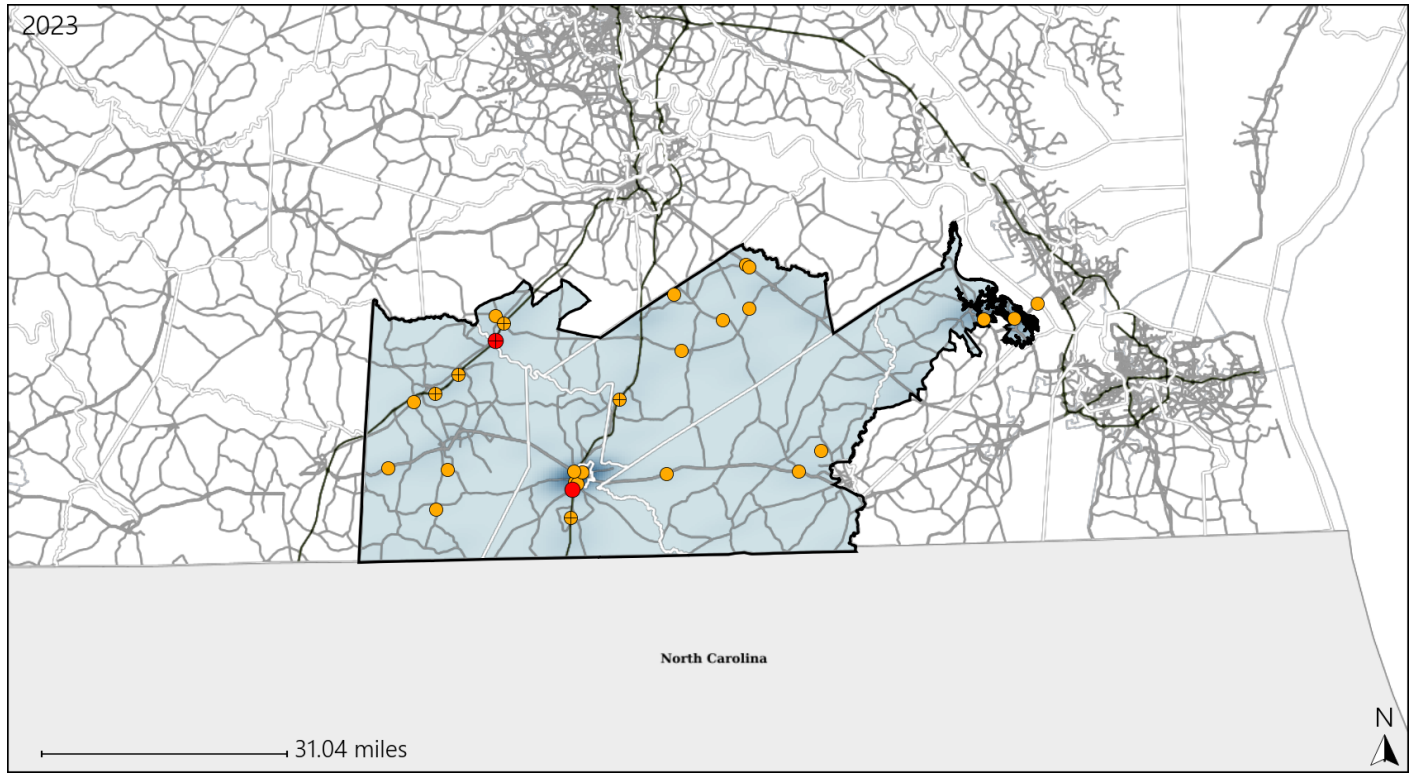


Available Crash Data - Calendar Year (CY)	CY 2020	CY 2021	CY 2022	CY 2023
Total Crashes	1717	1786	1600	1723
Fatalities	26	47	28	28
Injuries	880	869	835	930
Unrestrained Fatalities	14	16	11	12
Percent of Unrestrained Fatalities to Total Fatalities	54%	34%	39%	43%
Unrestrained Injuries	90	96	95	128
Percent of Unrestrained Injuries to Total Injuries	10%	11%	11%	14%

Virginia House District 83 Distracted Driving Crash Statistics

Report Generated May, 2024

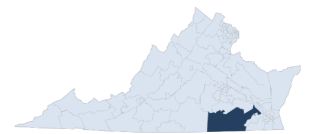
	Count	Highest Time Period(s)	Highest Day(s)	Highest Month(s)
Fatal Crashes	2	6:00am - 8:59am	Friday • Monday	April • August
Resulting Fatalities	2	9:00pm - 11:59pm (100%)	(100%)	(100%)
Serious Injury Crashes	26	3:00pm - 5:59pm Noon - 2:59pm (38%)	Wednesday (19%)	January • March (30%)



House District 83 Distracted Driving-Related Crashes

- | | |
|--------------------|------------------------|
| Interstate Crashes | Non-interstate Crashes |
| ● Fatal | ● Fatal |
| ⊕ Serious Injury | ⊕ Serious Injury |

The blue gradient represents the density of all distracted driving-related crashes.



Available Crash Data - Calendar Year (CY)	CY 2020	CY 2021	CY 2022	CY 2023
Total Crashes	1717	1786	1600	1723
Fatal Crashes	22	39	27	27
Injury Crashes	588	572	555	590
Distracted Driving-Related Fatal Crashes	0	3	4	2
Percent of Distracted Driving-Related Fatal Crashes to Total Fatal Crashes	0%	8%	15%	7%
Distracted Driving-Related Injury Crashes	130	102	106	120
Percent of Distracted Driving-Related Injury Crashes to Total Injury Crashes	22%	18%	19%	20%