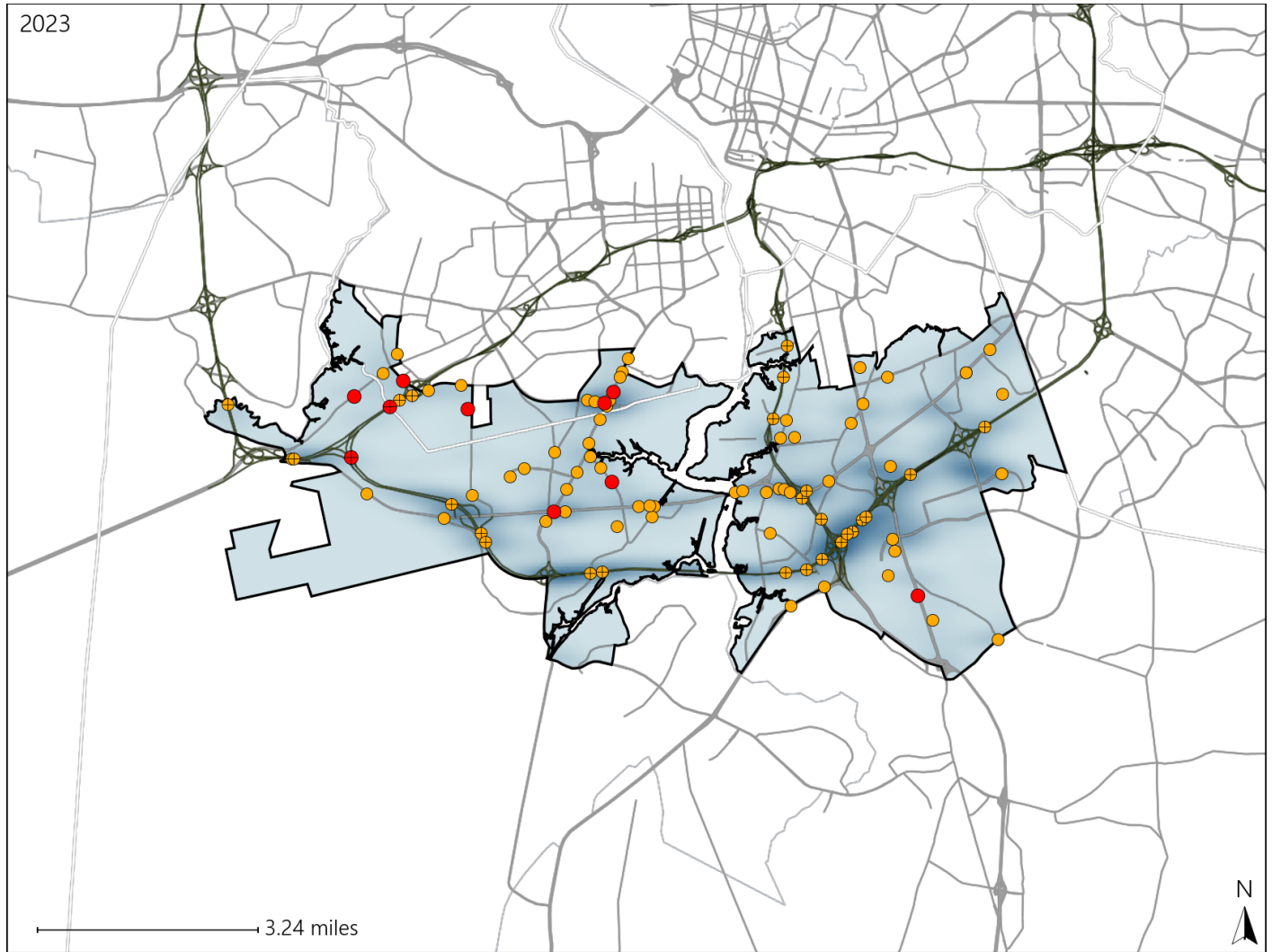


# Virginia House District 91 Crash Statistics

Report Generated May, 2024

	Count	Highest Time Period(s)	Highest Day(s)	Highest Month(s)
<b>Fatal Crashes</b>	<b>10</b>	<b>9:00pm - 11:59pm</b>	<b>Friday</b>	<b>August</b>
<b>Resulting Fatalities</b>	<b>10</b>	(40%)	(30%)	(30%)
<b>Serious Injury Crashes</b>	<b>84</b>	<b>3:00pm - 5:59pm</b>	<b>Friday</b>	<b>August</b>
		(23%)	(26%)	(14%)



## House District 91 Crashes

Interstate Crashes

- Fatal
- Serious Injury

Non-interstate Crashes

- Fatal
- Serious Injury

The blue gradient represents the density of all crashes.

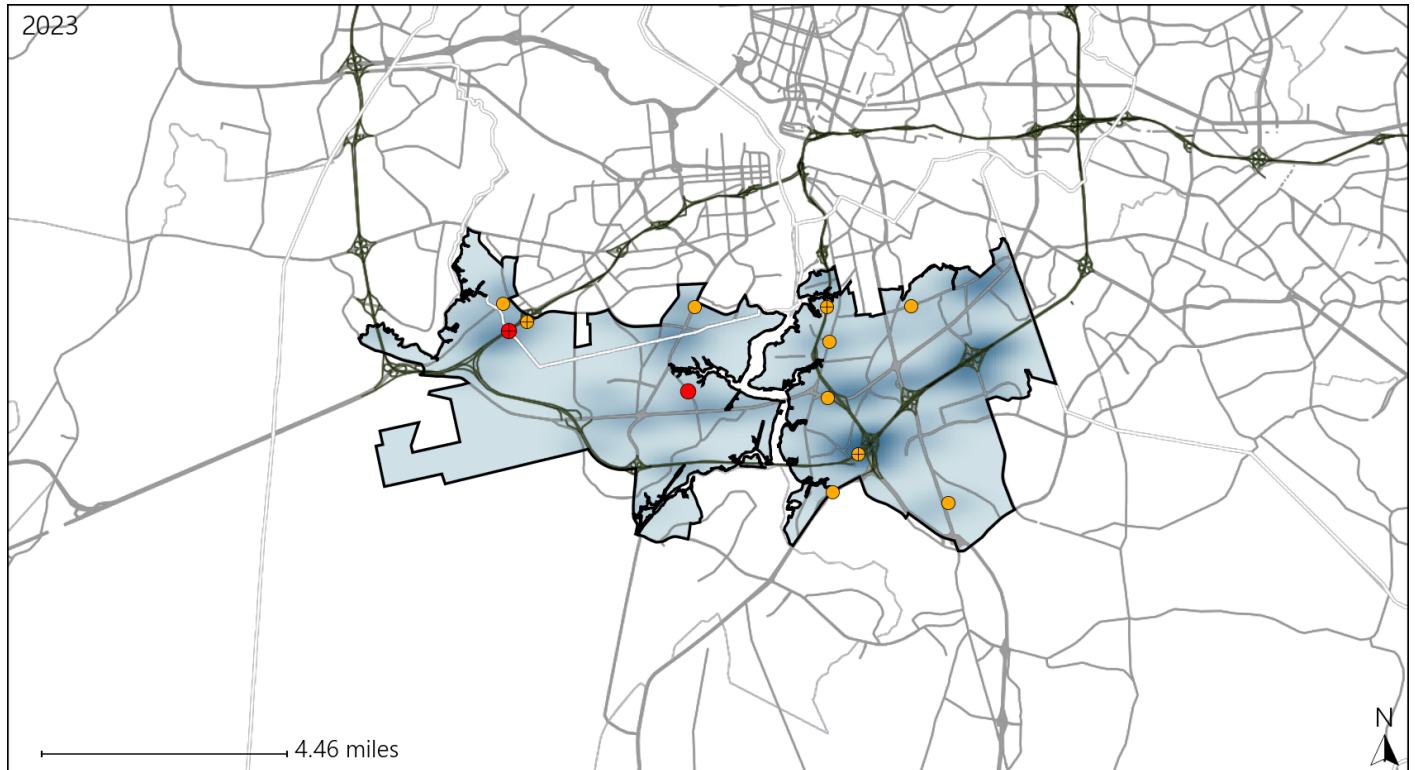


Available Crash Data - Calendar Year (CY)	CY 2020	CY 2021	CY 2022	CY 2023
Total Crashes	1390	1530	1513	1599
Fatal Crashes	6	13	7	10
Injury Crashes	564	554	570	618

# Virginia House District 91 Alcohol Crash Statistics

Report Generated May, 2024

	Count	Highest Time Period(s)	Highest Day(s)	Highest Month(s)
<b>Fatal Crashes</b>	<b>2</b>	<b>Midnight - 2:59am</b>	<b>Friday • Sunday</b>	<b>August</b>
<b>Resulting Fatalities</b>	<b>2</b>	(100%)	(100%)	(100%)
<b>Serious Injury Crashes</b>	<b>10</b>	<b>Midnight - 2:59am</b>	<b>Sunday</b>	<b>December • February</b>
		(50%)	(40%)	(40%)



### House District 91 Alcohol-Related Crashes

Interstate Crashes                      Non-interstate Crashes  
 ● Fatal                                      ● Fatal  
 ⊕ Serious Injury                          ⊕ Serious Injury

The blue gradient represents the density of all alcohol-related crashes.

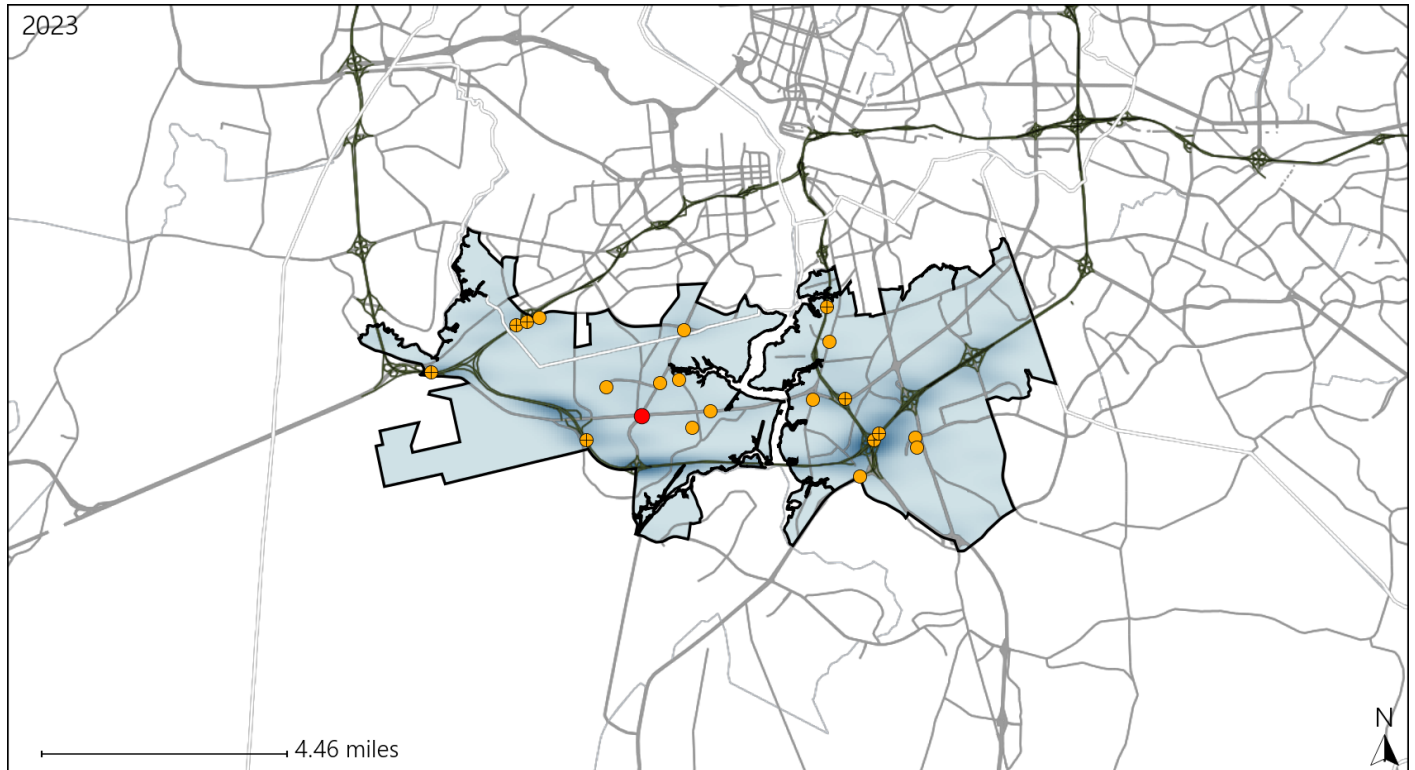


Available Crash Data - Calendar Year (CY)	CY 2020	CY 2021	CY 2022	CY 2023
Total Crashes	1390	1530	1513	1599
Fatal Crashes	6	13	7	10
Injury Crashes	564	554	570	618
Alcohol-Related Fatal Crashes	3	5	2	2
Percent of Alcohol-Related Fatal Crashes to Total Fatal Crashes	50%	38%	29%	20%
Alcohol-Related Injury Crashes	44	33	33	43
Percent of Alcohol-Related Injury Crashes to Total Injury Crashes	8%	6%	6%	7%

# Virginia House District 91 Speed Crash Statistics

Report Generated May, 2024

	Count	Highest Time Period(s)	Highest Day(s)	Highest Month(s)
<b>Fatal Crashes</b>	<b>1</b>	<b>Noon - 2:59pm</b>	<b>Friday</b>	<b>November</b>
<b>Resulting Fatalities</b>	<b>1</b>	(100%)	(100%)	(100%)
<b>Serious Injury Crashes</b>	<b>20</b>	<b>Noon - 2:59pm</b>	<b>Friday</b>	<b>December + July</b>
		(25%)	(30%)	(40%)



## House District 91 Speed-Related Crashes

Interstate Crashes

Non-interstate Crashes

- Fatal
- Serious Injury

- Fatal
- Serious Injury

The blue gradient represents the density of all speed-related crashes.

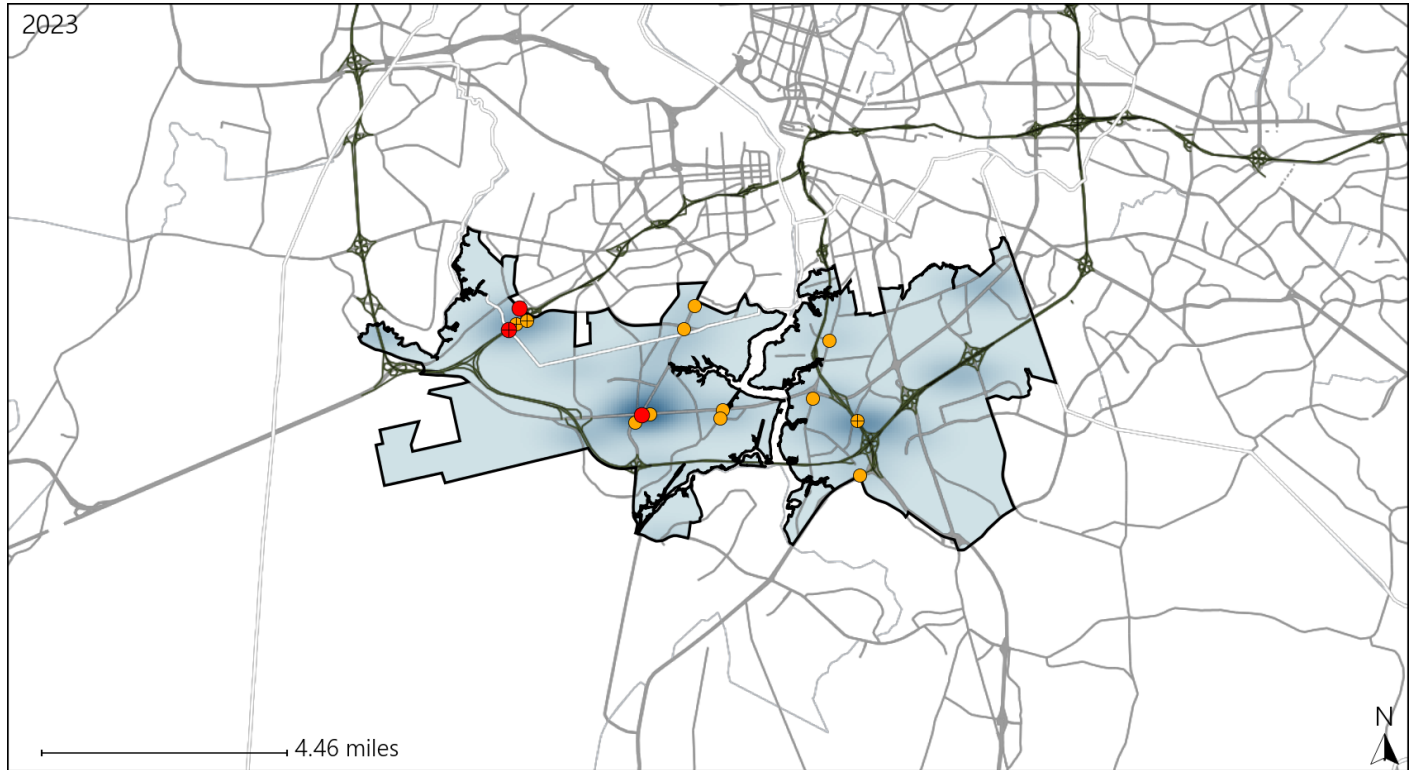


Available Crash Data - Calendar Year (CY)	CY 2020	CY 2021	CY 2022	CY 2023
<b>Total Crashes</b>	<b>1390</b>	<b>1530</b>	<b>1513</b>	<b>1599</b>
<b>Fatal Crashes</b>	<b>6</b>	<b>13</b>	<b>7</b>	<b>10</b>
<b>Injury Crashes</b>	<b>564</b>	<b>554</b>	<b>570</b>	<b>618</b>
<b>Speed-Related Fatal Crashes</b>	<b>1</b>	<b>7</b>	<b>3</b>	<b>1</b>
<b>Percent of Speed-Related Fatal Crashes to Total Fatal Crashes</b>	<b>17%</b>	<b>54%</b>	<b>43%</b>	<b>10%</b>
<b>Speed-Related Injury Crashes</b>	<b>117</b>	<b>120</b>	<b>133</b>	<b>113</b>
<b>Percent of Speed-Related Injury Crashes to Total Injury Crashes</b>	<b>21%</b>	<b>22%</b>	<b>23%</b>	<b>18%</b>

# Virginia House District 91 Unrestrained Crash Statistics

Report Generated May, 2024

	Count	Highest Time Period(s)	Highest Day(s)	Highest Month(s)
<b>Fatal Crashes</b>	<b>3</b>	<b>9:00pm - 11:59pm</b>	<b>Friday</b>	<b>August • February</b>
<b>Unrestrained Fatalities</b>	<b>3</b>	<b>Midnight - 2:59am</b> (66%)	<b>(67%)</b>	<b>(66%)</b>
<b>Serious Injury Crashes</b>	<b>12</b>	<b>9:00pm - 11:59pm</b> (25%)	<b>Friday • Thursday</b> (50%)	<b>February • January</b> (34%)



## House District 91 Unrestrained-Related Crashes

- |  |  |
|--|--|
| Interstate Crashes                                   | Non-interstate Crashes                               |
| <span style="color: red;">●</span> Fatal             | <span style="color: red;">●</span> Fatal             |
| <span style="color: orange;">●</span> Serious Injury | <span style="color: orange;">●</span> Serious Injury |

The blue gradient represents the density of all unrestrained-related crashes.



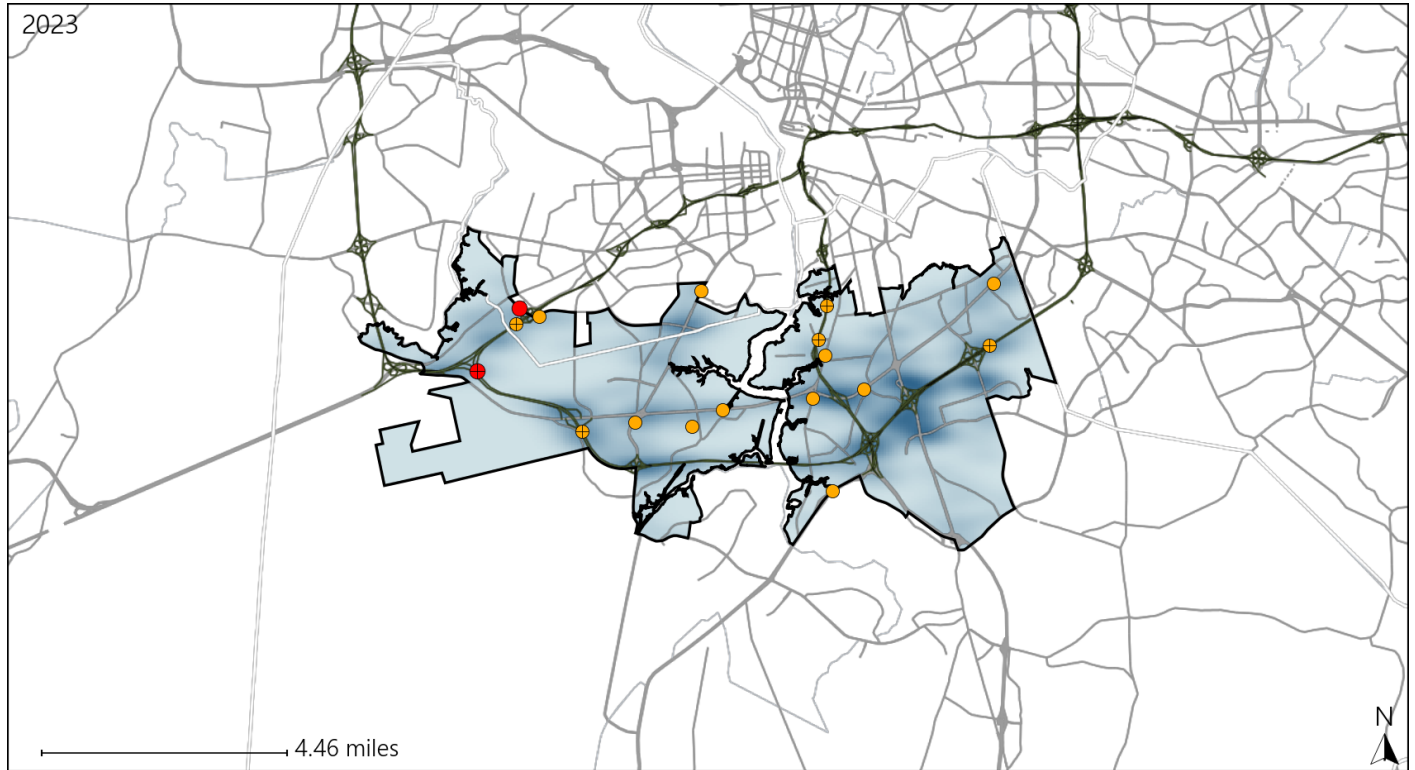
Available Crash Data - Calendar Year (CY)	CY 2020	CY 2021	CY 2022	CY 2023
Total Crashes	1390	1530	1513	1599
Fatalities	6	14	7	10
Injuries	934	913	924	1050
Unrestrained Fatalities	2	4	2	3
Percent of Unrestrained Fatalities to Total Fatalities	33%	29%	29%	30%
Unrestrained Injuries	46	41	44	58
Percent of Unrestrained Injuries to Total Injuries	5%	4%	5%	6%



# Virginia House District 91 Distracted Driving Crash Statistics

Report Generated May, 2024

	Count	Highest Time Period(s)	Highest Day(s)	Highest Month(s)
<b>Fatal Crashes</b>	<b>2</b>	<b>9:00pm - 11:59pm</b>	<b>Friday • Tuesday</b>	<b>February • March</b>
<b>Resulting Fatalities</b>	<b>2</b>	<b>Noon - 2:59pm</b> (100%)	<b>(100%)</b>	<b>(100%)</b>
<b>Serious Injury Crashes</b>	<b>15</b>	<b>Midnight - 2:59am</b> (33%)	<b>Friday</b> (40%)	<b>August • March</b> (40%)




## House District 91 Distracted Driving-Related Crashes


Interstate Crashes

Non-interstate Crashes

 Fatal

 Fatal

 Serious Injury

 Serious Injury

The blue gradient represents the density of all distracted driving-related crashes.



Available Crash Data - Calendar Year (CY)	CY 2020	CY 2021	CY 2022	CY 2023
Total Crashes	1390	1530	1513	1599
Fatal Crashes	6	13	7	10
Injury Crashes	564	554	570	618
Distracted Driving-Related Fatal Crashes	2	2	0	2
Percent of Distracted Driving-Related Fatal Crashes to Total Fatal Crashes	33%	15%	0%	20%
Distracted Driving-Related Injury Crashes	92	88	92	110
Percent of Distracted Driving-Related Injury Crashes to Total Injury Crashes	16%	16%	16%	18%