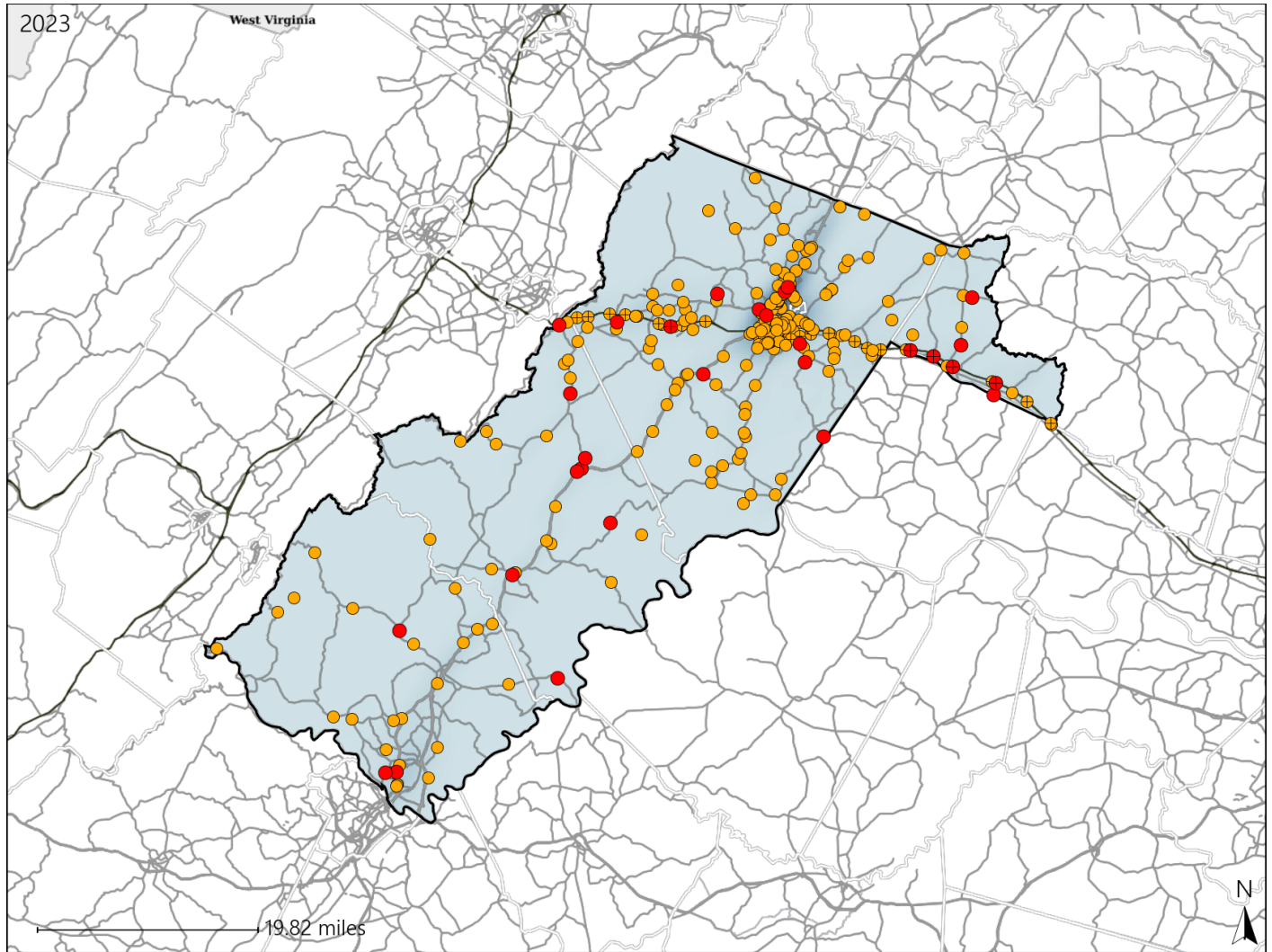


Virginia Senate District 11 Crash Statistics

Report Generated May, 2024

| | Count | Highest Time Period(s) | Highest Day(s) | Highest Month(s) |
|-------------------------------|------------|--------------------------|----------------------------|------------------|
| Fatal Crashes | 29 | Midnight - 2:59am | Thursday • Tuesday | January |
| Resulting Fatalities | 30 | (21%) | (34%) | (21%) |
| Serious Injury Crashes | 246 | 3:00pm - 5:59pm | Saturday • Thursday | October |
| | | (21%) | (32%) | (12%) |



Senate District 11 Crashes

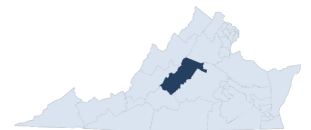
Interstate Crashes

- Fatal
- Serious Injury

Non-interstate Crashes

- Fatal
- Serious Injury

The blue gradient represents the density of all crashes.

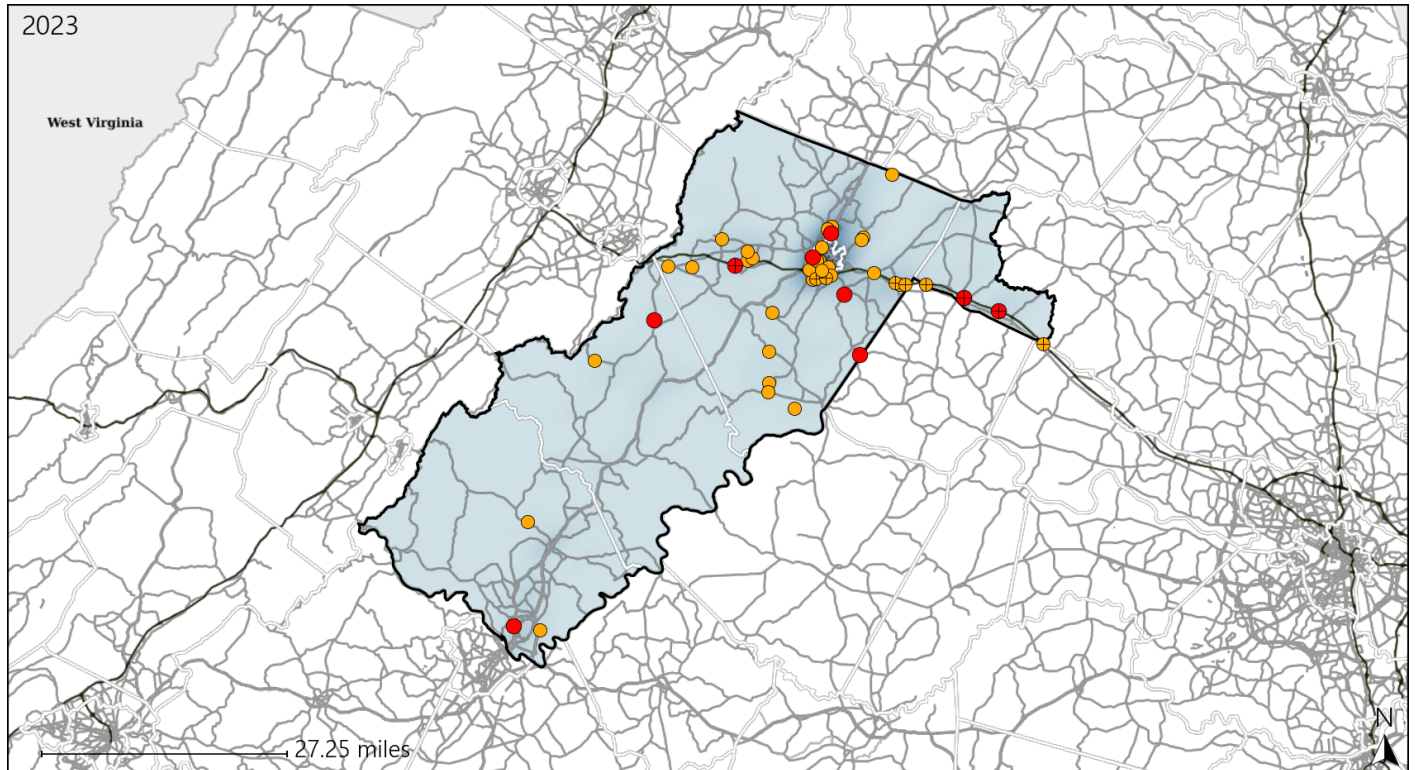


| Available Crash Data - Calendar Year (CY) | CY 2020 | CY 2021 | CY 2022 | CY 2023 |
|---|---------|---------|---------|---------|
| Total Crashes | 3085 | 3318 | 3608 | 3655 |
| Fatal Crashes | 28 | 37 | 28 | 29 |
| Injury Crashes | 1305 | 1378 | 1620 | 1685 |

Virginia Senate District 11 Alcohol Crash Statistics

Report Generated May, 2024

| | Count | Highest Time Period(s) | Highest Day(s) | Highest Month(s) |
|-------------------------------|-----------|--------------------------|------------------------|------------------|
| Fatal Crashes | 9 | Midnight - 2:59am | Friday • Sunday | January |
| Resulting Fatalities | 9 | (44%) | (44%) | (56%) |
| Serious Injury Crashes | 36 | 9:00pm - 11:59pm | Sunday | April |
| | | (36%) | (25%) | (19%) |



Senate District 11 Alcohol-Related Crashes

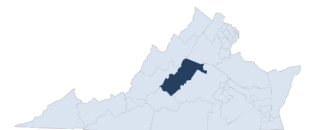
Interstate Crashes

Non-interstate Crashes

- Fatal
- Serious Injury

- Fatal
- Serious Injury

The blue gradient represents the density of all alcohol-related crashes.

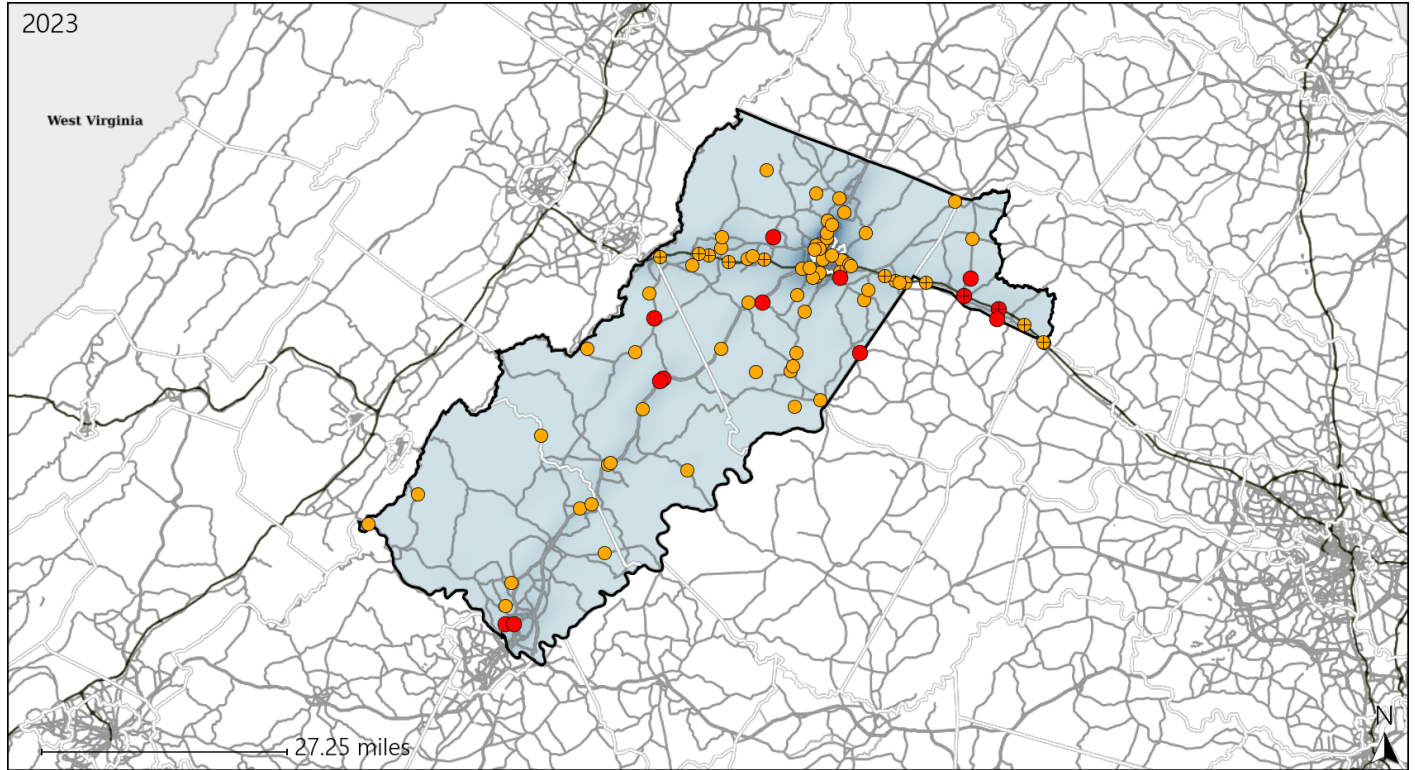


| Available Crash Data - Calendar Year (CY) | CY 2020 | CY 2021 | CY 2022 | CY 2023 |
|---|---------|---------|---------|---------|
| Total Crashes | 3085 | 3318 | 3608 | 3655 |
| Fatal Crashes | 28 | 37 | 28 | 29 |
| Injury Crashes | 1305 | 1378 | 1620 | 1685 |
| Alcohol-Related Fatal Crashes | 10 | 6 | 15 | 9 |
| Percent of Alcohol-Related Fatal Crashes to Total Fatal Crashes | 36% | 16% | 54% | 31% |
| Alcohol-Related Injury Crashes | 123 | 97 | 101 | 135 |
| Percent of Alcohol-Related Injury Crashes to Total Injury Crashes | 9% | 7% | 6% | 8% |

Virginia Senate District 11 Speed Crash Statistics

Report Generated May, 2024

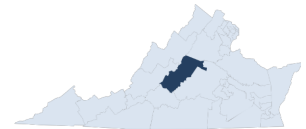
| | Count | Highest Time Period(s) | Highest Day(s) | Highest Month(s) |
|-------------------------------|-----------|--------------------------|-----------------|-----------------------|
| Fatal Crashes | 13 | Midnight - 2:59am | Tuesday | August • March |
| Resulting Fatalities | 14 | (46%) | (31%) | (46%) |
| Serious Injury Crashes | 73 | 3:00pm - 5:59pm | Saturday | April • March |
| | | (21%) | (21%) | (24%) |



Senate District 11 Speed-Related Crashes

Interstate Crashes Non-interstate Crashes
 ● Fatal ● Fatal
 ● Serious Injury ● Serious Injury

The blue gradient represents the density of all speed-related crashes.

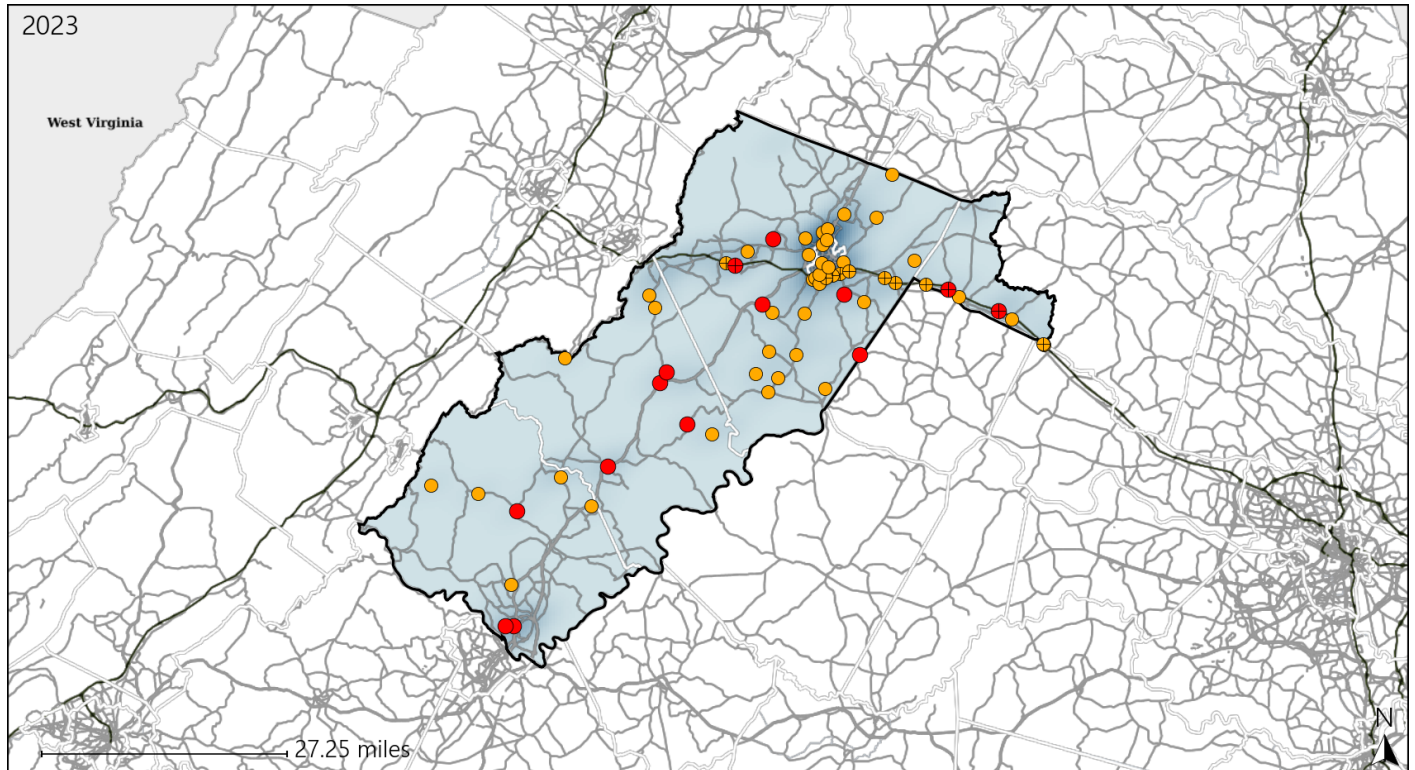


| Available Crash Data - Calendar Year (CY) | CY 2020 | CY 2021 | CY 2022 | CY 2023 |
|---|---------|---------|---------|---------|
| Total Crashes | 3085 | 3318 | 3608 | 3655 |
| Fatal Crashes | 28 | 37 | 28 | 29 |
| Injury Crashes | 1305 | 1378 | 1620 | 1685 |
| Speed-Related Fatal Crashes | 14 | 8 | 9 | 13 |
| Percent of Speed-Related Fatal Crashes to Total Fatal Crashes | 50% | 22% | 32% | 45% |
| Speed-Related Injury Crashes | 253 | 268 | 294 | 321 |
| Percent of Speed-Related Injury Crashes to Total Injury Crashes | 19% | 19% | 18% | 19% |

Virginia Senate District 11 Unrestrained Crash Statistics

Report Generated May, 2024

| | Count | Highest Time Period(s) | Highest Day(s) | Highest Month(s) |
|--------------------------------|-----------|--------------------------|-------------------------|----------------------------|
| Fatal Crashes | 14 | Midnight - 2:59am | Monday • Tuesday | January • September |
| Unrestrained Fatalities | 15 | (29%) | (42%) | (42%) |
| Serious Injury Crashes | 50 | 6:00pm - 8:59pm | Saturday | November |
| | | (20%) | (26%) | (18%) |



Senate District 11 Unrestrained-Related Crashes

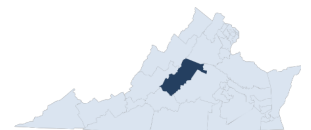
Interstate Crashes

Non-interstate Crashes

- Fatal
- Serious Injury

- Fatal
- Serious Injury

The blue gradient represents the density of all unrestrained-related crashes.

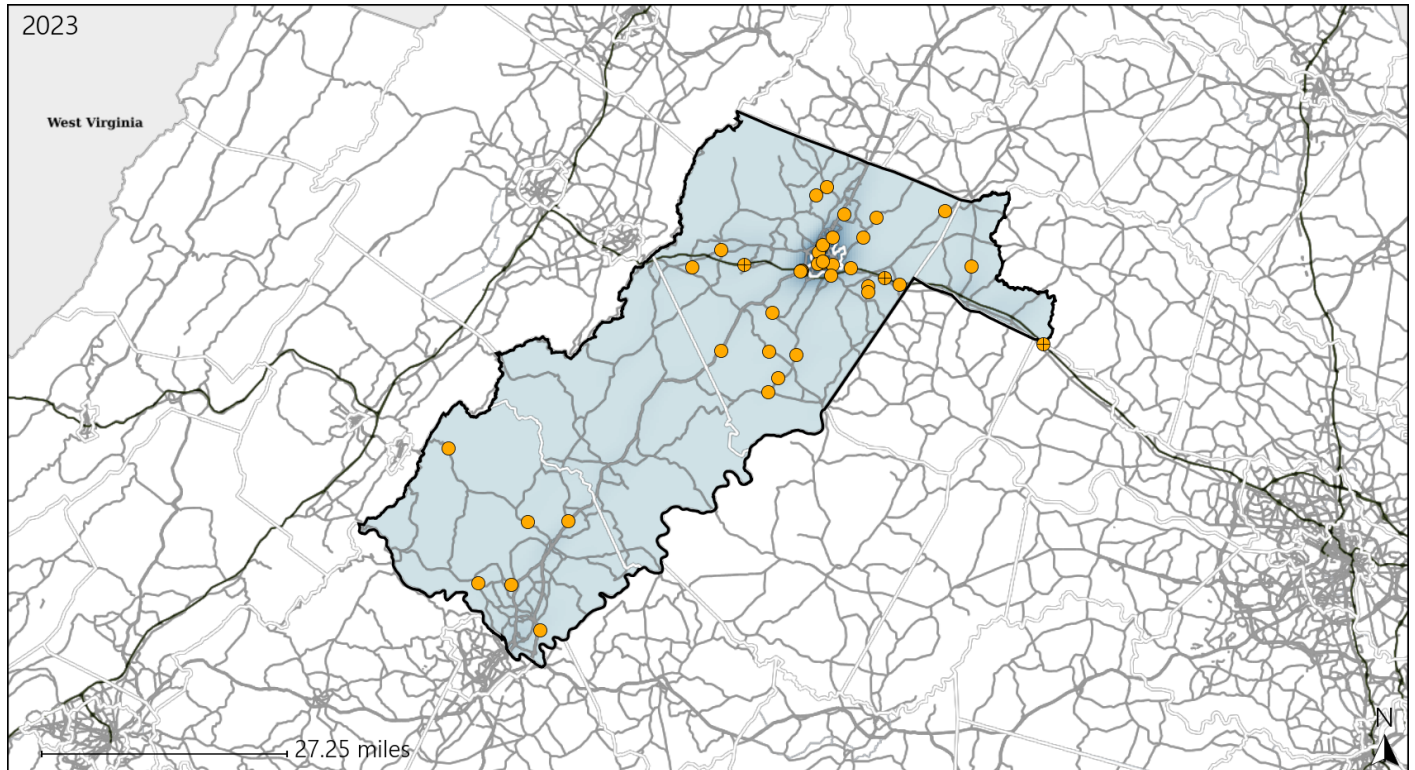


| Available Crash Data - Calendar Year (CY) | CY 2020 | CY 2021 | CY 2022 | CY 2023 |
|---|-------------|-------------|-------------|-------------|
| Total Crashes | 3085 | 3318 | 3608 | 3655 |
| Fatalities | 32 | 39 | 29 | 30 |
| Injuries | 1842 | 2049 | 2504 | 2554 |
| Unrestrained Fatalities | 16 | 15 | 13 | 15 |
| Percent of Unrestrained Fatalities to Total Fatalities | 50% | 38% | 45% | 50% |
| Unrestrained Injuries | 146 | 131 | 131 | 135 |
| Percent of Unrestrained Injuries to Total Injuries | 8% | 6% | 5% | 5% |

Virginia Senate District 11 Distracted Driving Crash Statistics

Report Generated May, 2024

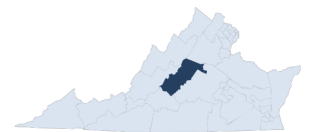
| | Count | Highest Time Period(s) | Highest Day(s) | Highest Month(s) |
|-------------------------------|-------|--------------------------|-------------------|------------------|
| Fatal Crashes | 0 | - | - | - |
| Resulting Fatalities | 0 | - | - | - |
| Serious Injury Crashes | 40 | 3:00pm - 5:59pm (25%) | Thursday (28%) | April (15%) |



Senate District 11 Distracted Driving-Related Crashes

- | | |
|--------------------|------------------------|
| Interstate Crashes | Non-interstate Crashes |
| ● Fatal | ● Fatal |
| ⊕ Serious Injury | ● Serious Injury |

The blue gradient represents the density of all distracted driving-related crashes.



| Available Crash Data - Calendar Year (CY) | CY 2020 | CY 2021 | CY 2022 | CY 2023 |
|--|---------|---------|---------|---------|
| Total Crashes | 3085 | 3318 | 3608 | 3655 |
| Fatal Crashes | 28 | 37 | 28 | 29 |
| Injury Crashes | 1305 | 1378 | 1620 | 1685 |
| Distracted Driving-Related Fatal Crashes | 4 | 4 | 5 | 0 |
| Percent of Distracted Driving-Related Fatal Crashes to Total Fatal Crashes | 14% | 11% | 18% | 0% |
| Distracted Driving-Related Injury Crashes | 254 | 236 | 270 | 309 |
| Percent of Distracted Driving-Related Injury Crashes to Total Injury Crashes | 19% | 17% | 17% | 18% |