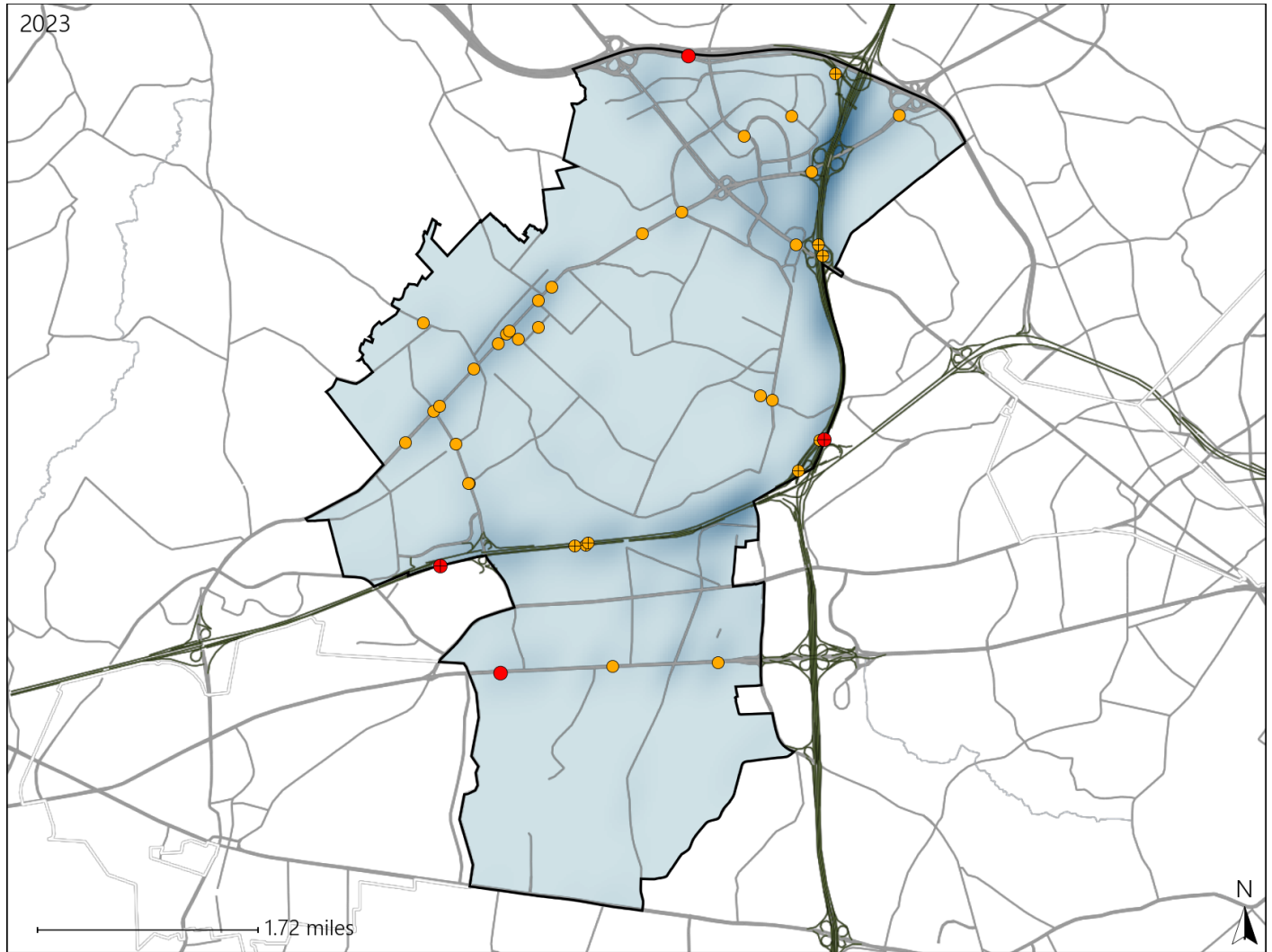


Virginia House District 12 Crash Statistics

Report Generated May, 2024

	Count	Highest Time Period(s)	Highest Day(s)	Highest Month(s)
Fatal Crashes	4	3:00am - 5:59am	Friday	August
Resulting Fatalities	4	(50%)	(50%)	(50%)
Serious Injury Crashes	34	9:00pm - 11:59pm	Saturday • Sunday	October
		(21%)	(42%)	(21%)



House District 12 Crashes

Interstate Crashes

- Fatal
- Serious Injury

Non-interstate Crashes

- Fatal
- Serious Injury

The blue gradient represents the density of all crashes.

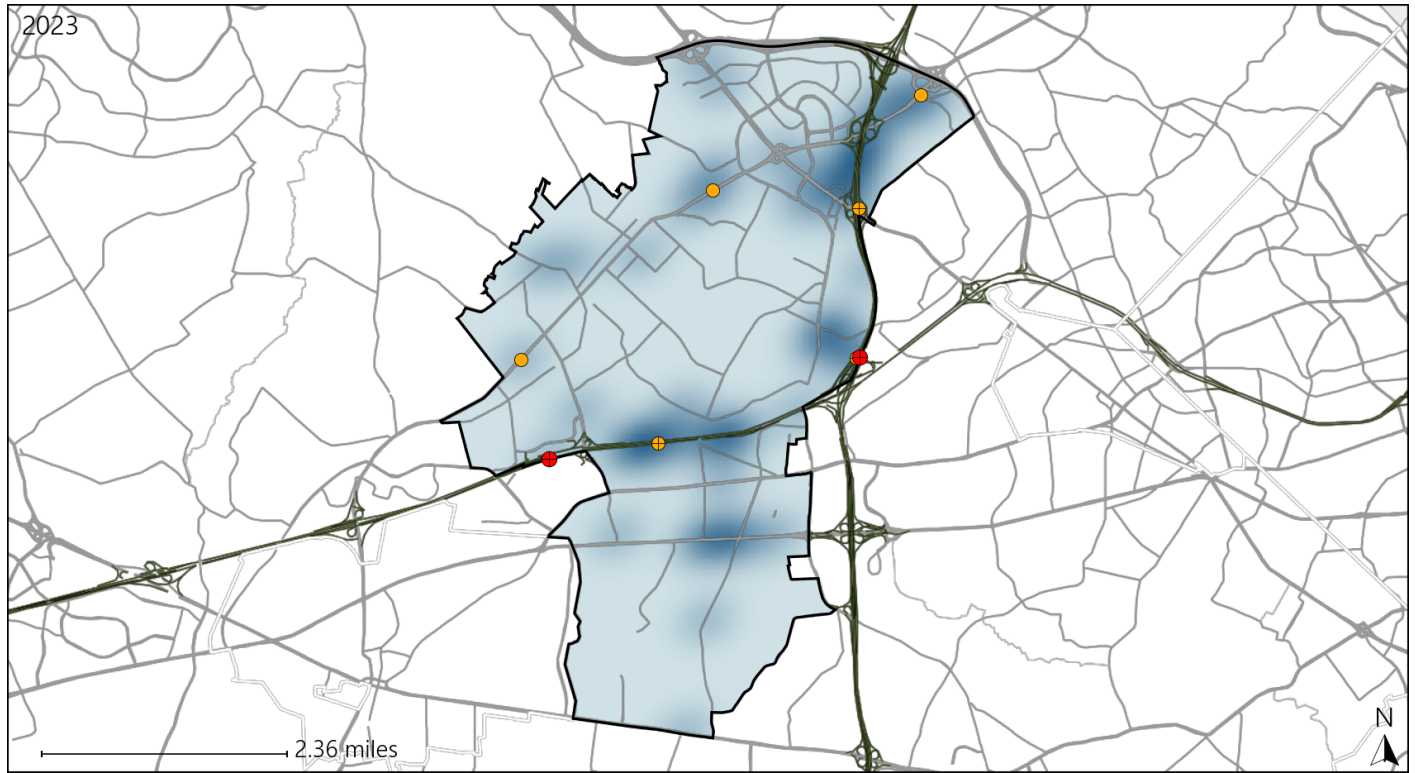


Available Crash Data - Calendar Year (CY)	CY 2020	CY 2021	CY 2022	CY 2023
Total Crashes	900	1056	1257	1293
Fatal Crashes	0	4	4	4
Injury Crashes	236	286	303	332

Virginia House District 12 Alcohol Crash Statistics

Report Generated May, 2024

	Count	Highest Time Period(s)	Highest Day(s)	Highest Month(s)
Fatal Crashes	2	3:00am - 5:59am	Friday • Saturday	August • February
Resulting Fatalities	2	6:00pm - 8:59pm (100%)	(100%)	(100%)
Serious Injury Crashes	6	9:00pm - 11:59pm Midnight - 2:59am (66%)	Sunday (50%)	April • November (66%)



House District 12 Alcohol-Related Crashes

Interstate Crashes Non-interstate Crashes
 ● Fatal ● Fatal
 ⊕ Serious Injury ⊕ Serious Injury

The blue gradient represents the density of all alcohol-related crashes.

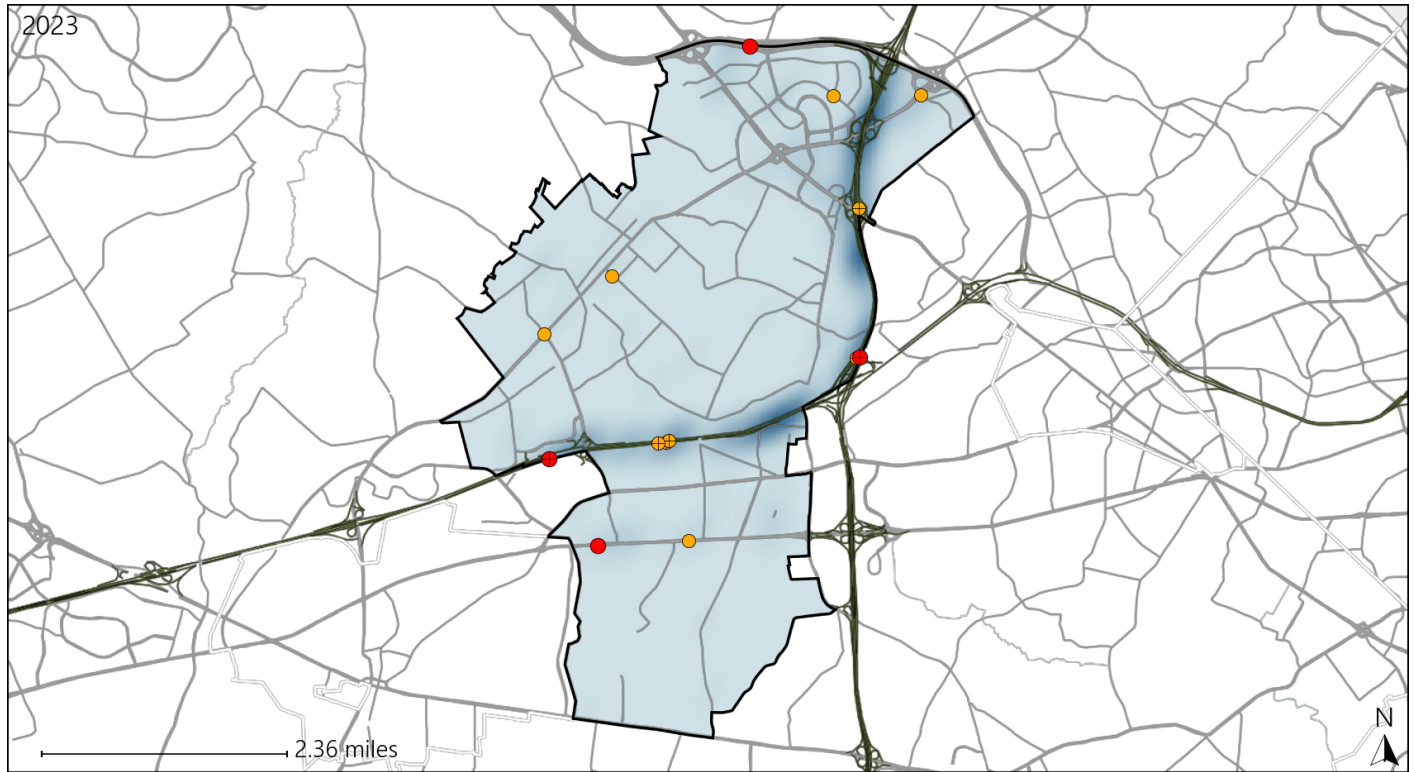


Available Crash Data - Calendar Year (CY)	CY 2020	CY 2021	CY 2022	CY 2023
Total Crashes	900	1056	1257	1293
Fatal Crashes	0	4	4	4
Injury Crashes	236	286	303	332
Alcohol-Related Fatal Crashes	0	1	2	2
Percent of Alcohol-Related Fatal Crashes to Total Fatal Crashes	0%	25%	50%	50%
Alcohol-Related Injury Crashes	14	14	22	14
Percent of Alcohol-Related Injury Crashes to Total Injury Crashes	6%	5%	7%	4%

Virginia House District 12 Speed Crash Statistics

Report Generated May, 2024

	Count	Highest Time Period(s)	Highest Day(s)	Highest Month(s)
Fatal Crashes	4	3:00am - 5:59am	Friday	August
Resulting Fatalities	4	(50%)	(50%)	(50%)
Serious Injury Crashes	10	9:00pm - 11:59pm	Sunday	November
		(40%)	(40%)	(20%)



House District 12 Speed-Related Crashes

Interstate Crashes Non-interstate Crashes
 ● Fatal ● Fatal
 ● Serious Injury ● Serious Injury
 The blue gradient represents the density of all speed-related crashes.

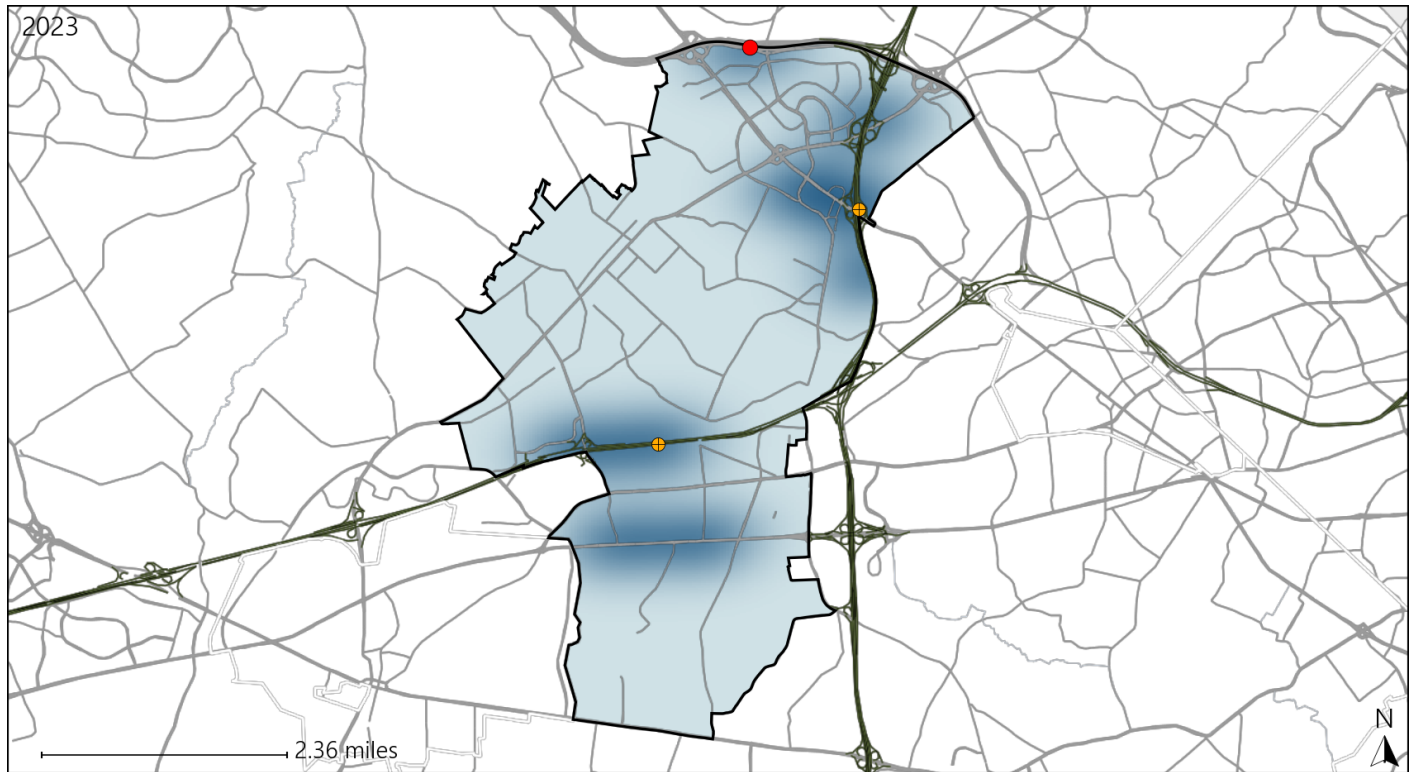


Available Crash Data - Calendar Year (CY)	CY 2020	CY 2021	CY 2022	CY 2023
Total Crashes	900	1056	1257	1293
Fatal Crashes	0	4	4	4
Injury Crashes	236	286	303	332
Speed-Related Fatal Crashes	0	1	4	4
Percent of Speed-Related Fatal Crashes to Total Fatal Crashes	0%	25%	100%	100%
Speed-Related Injury Crashes	72	93	77	96
Percent of Speed-Related Injury Crashes to Total Injury Crashes	31%	33%	25%	29%

Virginia House District 12 Unrestrained Crash Statistics

Report Generated May, 2024

	Count	Highest Time Period(s)	Highest Day(s)	Highest Month(s)
Fatal Crashes	1	3:00am - 5:59am	Wednesday	October
Unrestrained Fatalities	1	(100%)	(100%)	(100%)
Serious Injury Crashes	2	9:00pm - 11:59pm Midnight - 2:59am	Saturday • Sunday	November • September
		(100%)	(100%)	(100%)



House District 12 Unrestrained-Related Crashes

- | | |
|--|--|
| Interstate Crashes | Non-interstate Crashes |
| ● Fatal | ● Fatal |
| ⊕ Serious Injury | ⊕ Serious Injury |

The blue gradient represents the density of all unrestrained-related crashes.

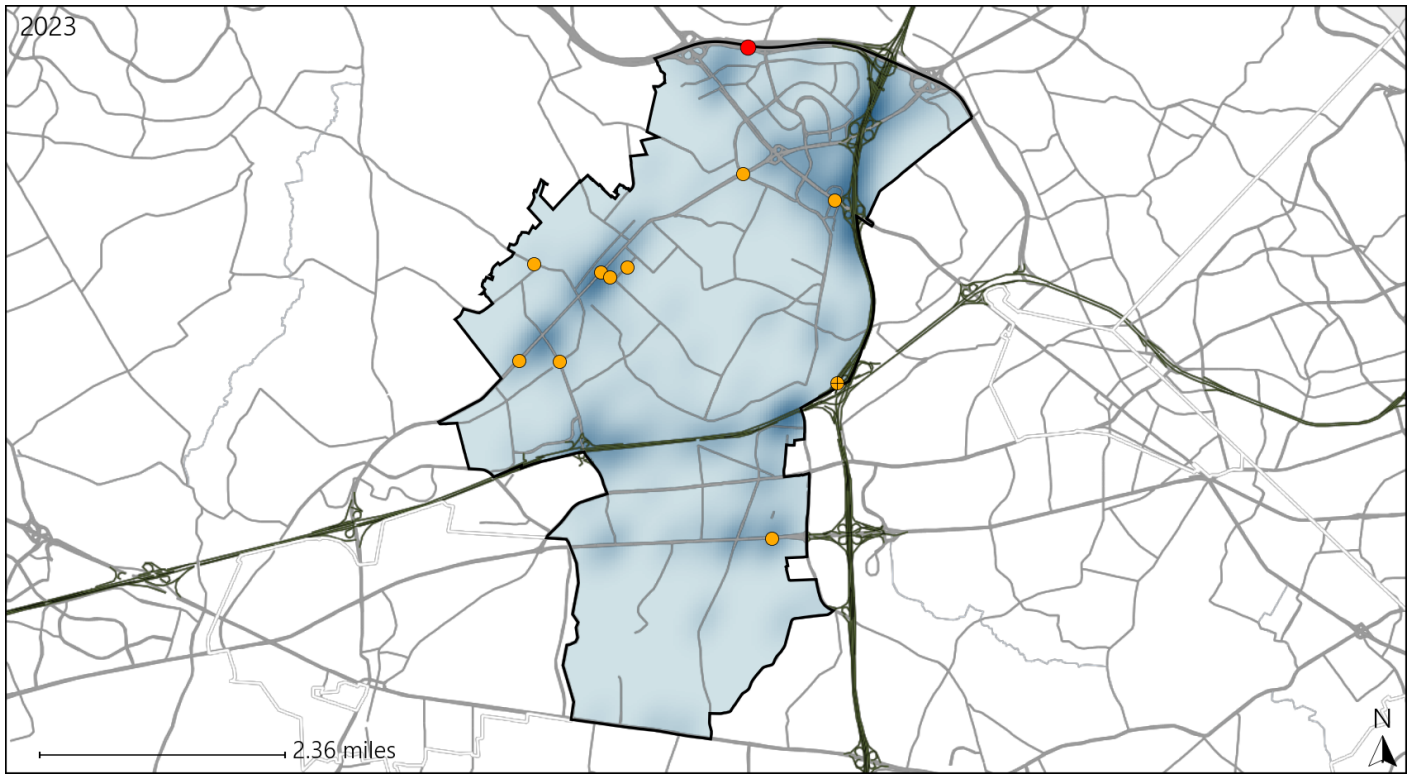


Available Crash Data - Calendar Year (CY)	CY 2020	CY 2021	CY 2022	CY 2023
Total Crashes	900	1056	1257	1293
Fatalities	0	6	7	4
Injuries	339	415	467	495
Unrestrained Fatalities	0	1	7	1
Percent of Unrestrained Fatalities to Total Fatalities	0%	17%	100%	25%
Unrestrained Injuries	6	9	7	9
Percent of Unrestrained Injuries to Total Injuries	2%	2%	1%	2%

Virginia House District 12 Distracted Driving Crash Statistics

Report Generated May, 2024

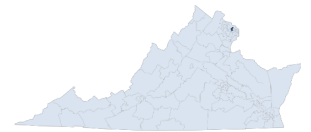
	Count	Highest Time Period(s)	Highest Day(s)	Highest Month(s)
Fatal Crashes	1	3:00am - 5:59am	Wednesday	October
Resulting Fatalities	1	(100%)	(100%)	(100%)
Serious Injury Crashes	10	6:00pm - 8:59pm 9:00am - 11:59am	Saturday • Tuesday	October
		(40%)	(60%)	(30%)



House District 12 Distracted Driving-Related Crashes

- | | |
|--------------------|------------------------|
| Interstate Crashes | Non-interstate Crashes |
| ● Fatal | ● Fatal |
| ⊕ Serious Injury | ⊕ Serious Injury |

The blue gradient represents the density of all distracted driving-related crashes.



Available Crash Data - Calendar Year (CY)	CY 2020	CY 2021	CY 2022	CY 2023
Total Crashes	900	1056	1257	1293
Fatal Crashes	0	4	4	4
Injury Crashes	236	286	303	332
Distracted Driving-Related Fatal Crashes	0	1	0	1
Percent of Distracted Driving-Related Fatal Crashes to Total Fatal Crashes	0%	25%	0%	25%
Distracted Driving-Related Injury Crashes	50	51	57	74
Percent of Distracted Driving-Related Injury Crashes to Total Injury Crashes	21%	18%	19%	22%