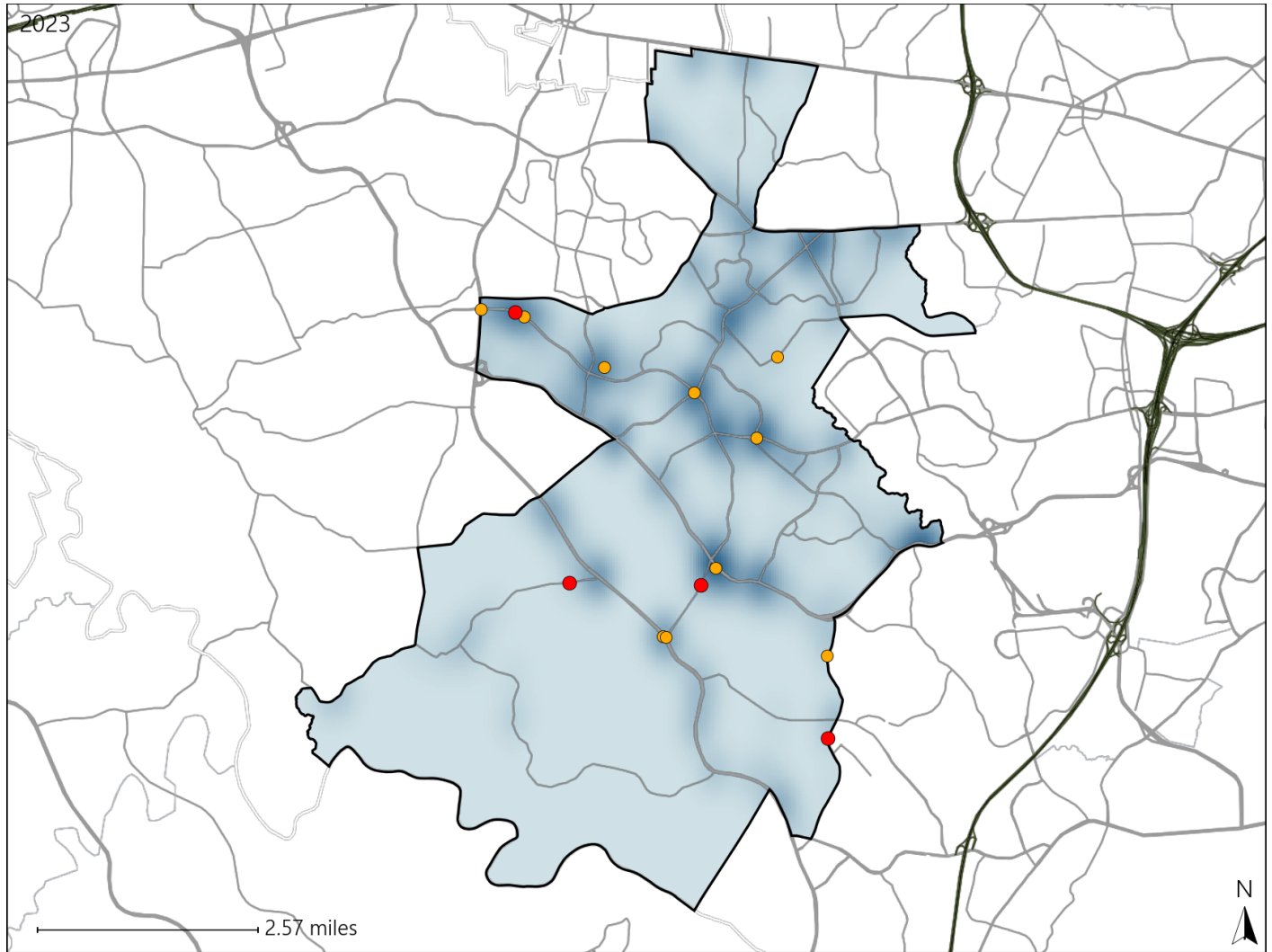


# Virginia House District 15 Crash Statistics

Report Generated May, 2024

	Count	Highest Time Period(s)	Highest Day(s)	Highest Month(s)
<b>Fatal Crashes</b>	<b>4</b>	<b>9:00pm - 11:59pm</b>	<b>Tuesday</b>	<b>August + January</b>
<b>Resulting Fatalities</b>	<b>5</b>	(50%)	(50%)	(50%)
<b>Serious Injury Crashes</b>	<b>10</b>	<b>9:00pm - 11:59pm</b>	<b>Wednesday</b>	<b>February + November</b>
		(40%)	(40%)	(60%)



### House District 15 Crashes

Interstate Crashes

- Fatal
- Serious Injury

Non-interstate Crashes

- Fatal
- Serious Injury

The blue gradient represents the density of all crashes.

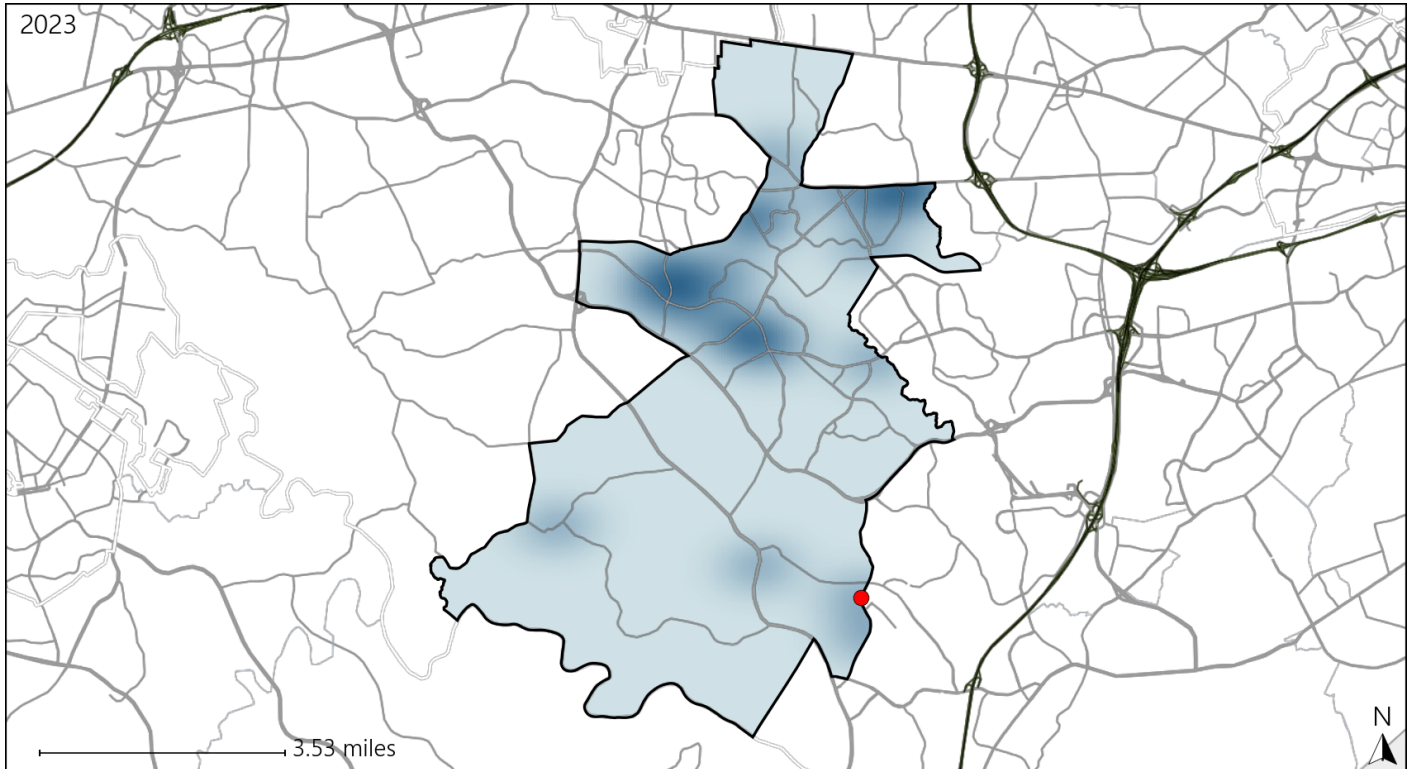


Available Crash Data - Calendar Year (CY)	CY 2020	CY 2021	CY 2022	CY 2023
<b>Total Crashes</b>	<b>292</b>	<b>376</b>	<b>418</b>	<b>457</b>
<b>Fatal Crashes</b>	<b>1</b>	<b>3</b>	<b>6</b>	<b>4</b>
<b>Injury Crashes</b>	<b>72</b>	<b>129</b>	<b>122</b>	<b>137</b>

# Virginia House District 15 Alcohol Crash Statistics

Report Generated May, 2024

	Count	Highest Time Period(s)	Highest Day(s)	Highest Month(s)
<b>Fatal Crashes</b>	<b>1</b>	<b>3:00pm - 5:59pm</b>	<b>Friday</b>	<b>May</b>
<b>Resulting Fatalities</b>	<b>1</b>	<b>(100%)</b>	<b>(100%)</b>	<b>(100%)</b>
<b>Serious Injury Crashes</b>	<b>0</b>	<b>-</b>	<b>-</b>	<b>-</b>



### House District 15 Alcohol-Related Crashes

Interstate Crashes

Non-interstate Crashes

● Fatal

● Fatal

⊕ Serious Injury

● Serious Injury

The blue gradient represents the density of all alcohol-related crashes.

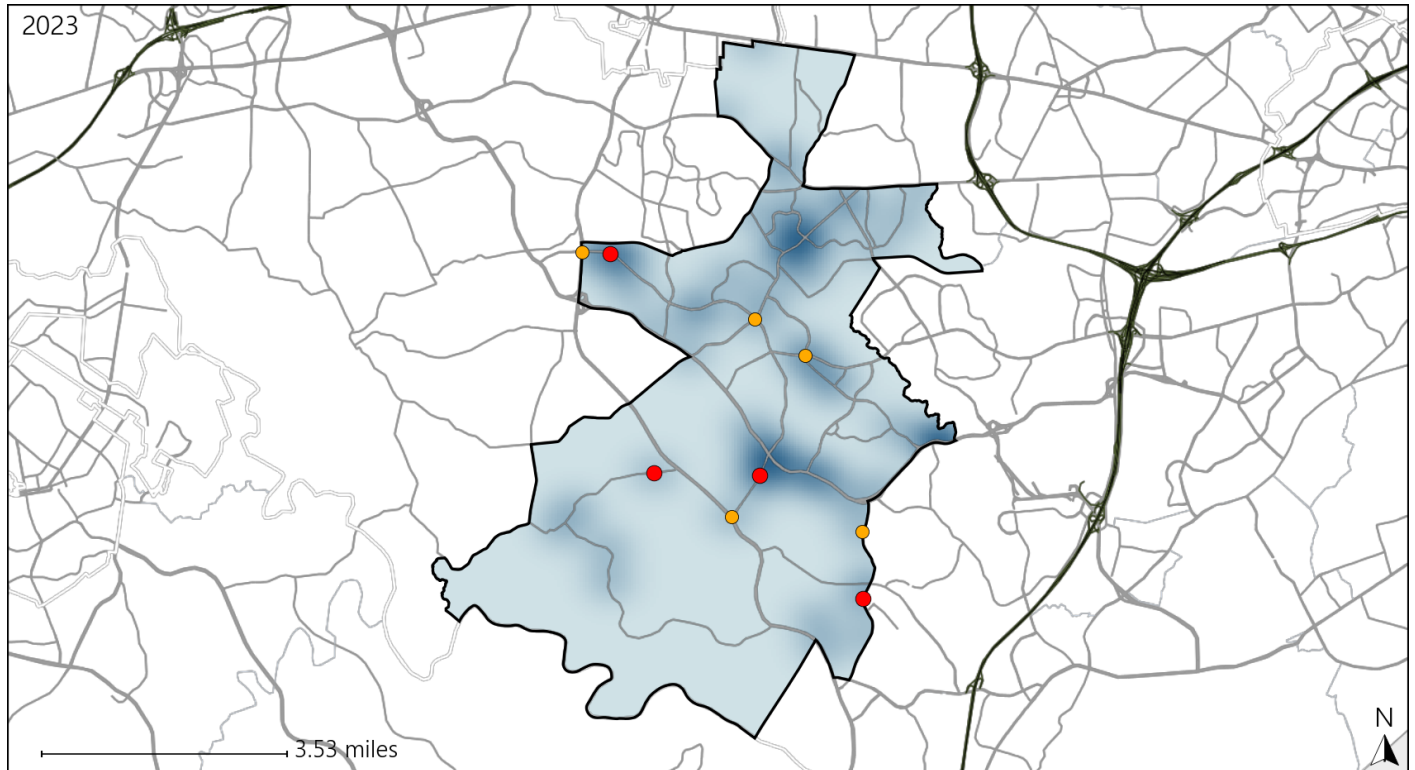


Available Crash Data - Calendar Year (CY)	CY 2020	CY 2021	CY 2022	CY 2023
Total Crashes	292	376	418	457
Fatal Crashes	1	3	6	4
Injury Crashes	72	129	122	137
Alcohol-Related Fatal Crashes	1	1	0	1
Percent of Alcohol-Related Fatal Crashes to Total Fatal Crashes	100%	33%	0%	25%
Alcohol-Related Injury Crashes	4	13	4	5
Percent of Alcohol-Related Injury Crashes to Total Injury Crashes	6%	10%	3%	4%

# Virginia House District 15 Speed Crash Statistics

Report Generated May, 2024

	Count	Highest Time Period(s)	Highest Day(s)	Highest Month(s)
<b>Fatal Crashes</b>	<b>4</b>	<b>9:00pm - 11:59pm</b>	<b>Tuesday</b>	<b>August + January</b>
<b>Resulting Fatalities</b>	<b>5</b>	(50%)	(50%)	(50%)
<b>Serious Injury Crashes</b>	<b>5</b>	<b>3:00pm - 5:59pm</b>	<b>Wednesday</b>	<b>February</b>
		(40%)	(40%)	(40%)



## House District 15 Speed-Related Crashes

Interstate Crashes                      Non-interstate Crashes  
 ● Fatal                                      ● Fatal  
 ● Serious Injury                          ● Serious Injury

The blue gradient represents the density of all speed-related crashes.

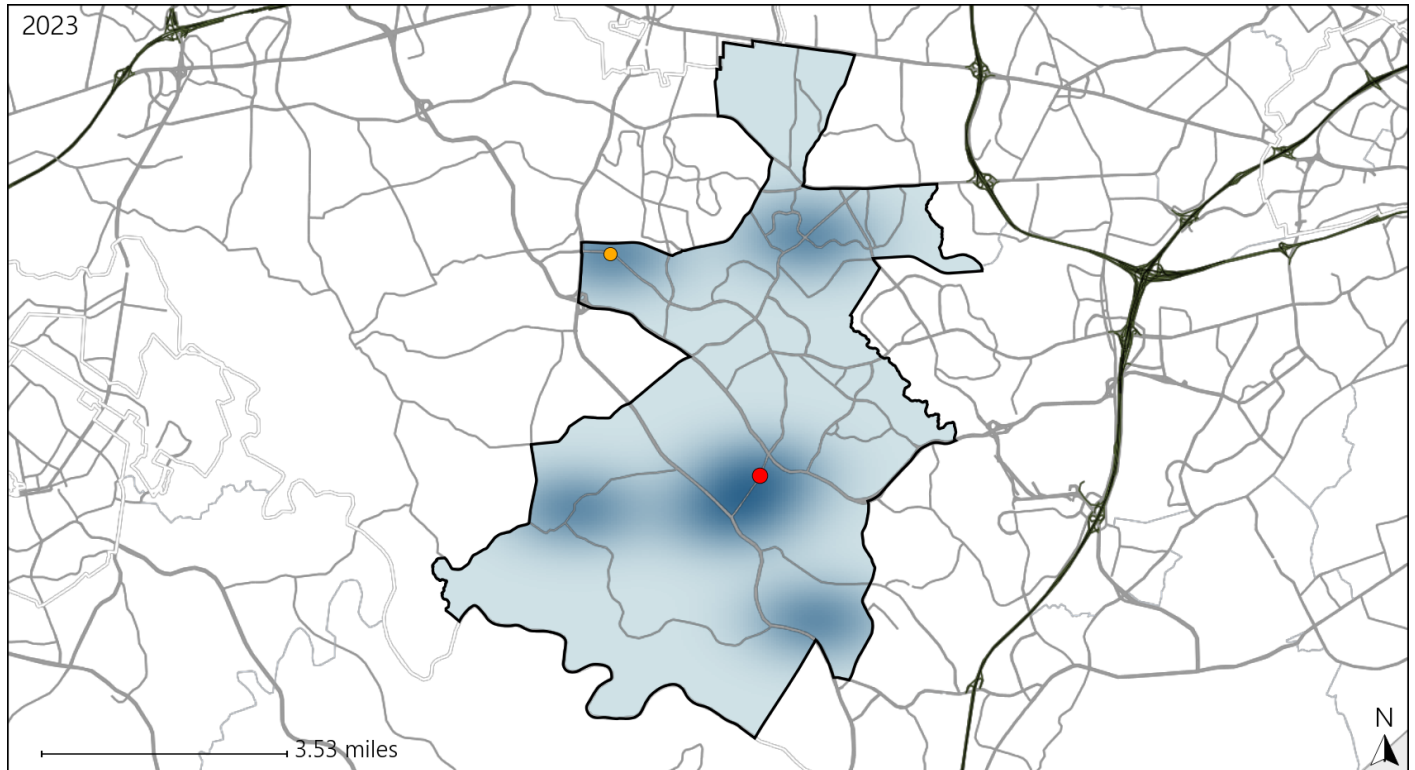


Available Crash Data - Calendar Year (CY)	CY 2020	CY 2021	CY 2022	CY 2023
<b>Total Crashes</b>	<b>292</b>	<b>376</b>	<b>418</b>	<b>457</b>
<b>Fatal Crashes</b>	<b>1</b>	<b>3</b>	<b>6</b>	<b>4</b>
<b>Injury Crashes</b>	<b>72</b>	<b>129</b>	<b>122</b>	<b>137</b>
<b>Speed-Related Fatal Crashes</b>	<b>1</b>	<b>2</b>	<b>3</b>	<b>4</b>
<b>Percent of Speed-Related Fatal Crashes to Total Fatal Crashes</b>	<b>100%</b>	<b>67%</b>	<b>50%</b>	<b>100%</b>
<b>Speed-Related Injury Crashes</b>	<b>7</b>	<b>21</b>	<b>17</b>	<b>25</b>
<b>Percent of Speed-Related Injury Crashes to Total Injury Crashes</b>	<b>10%</b>	<b>16%</b>	<b>14%</b>	<b>18%</b>

# Virginia House District 15 Unrestrained Crash Statistics

Report Generated May, 2024

	Count	Highest Time Period(s)	Highest Day(s)	Highest Month(s)
<b>Fatal Crashes</b>	<b>1</b>	<b>9:00pm - 11:59pm</b>	<b>Tuesday</b>	<b>January</b>
<b>Unrestrained Fatalities</b>	<b>1</b>	<b>(100%)</b>	<b>(100%)</b>	<b>(100%)</b>
<b>Serious Injury Crashes</b>	<b>1</b>	<b>9:00pm - 11:59pm</b>	<b>Tuesday</b>	<b>July</b>
		<b>(100%)</b>	<b>(100%)</b>	<b>(100%)</b>



## House District 15 Unrestrained-Related Crashes

Interstate Crashes

Non-interstate Crashes

- Fatal
- Serious Injury

- Fatal
- Serious Injury

The blue gradient represents the density of all unrestrained-related crashes.

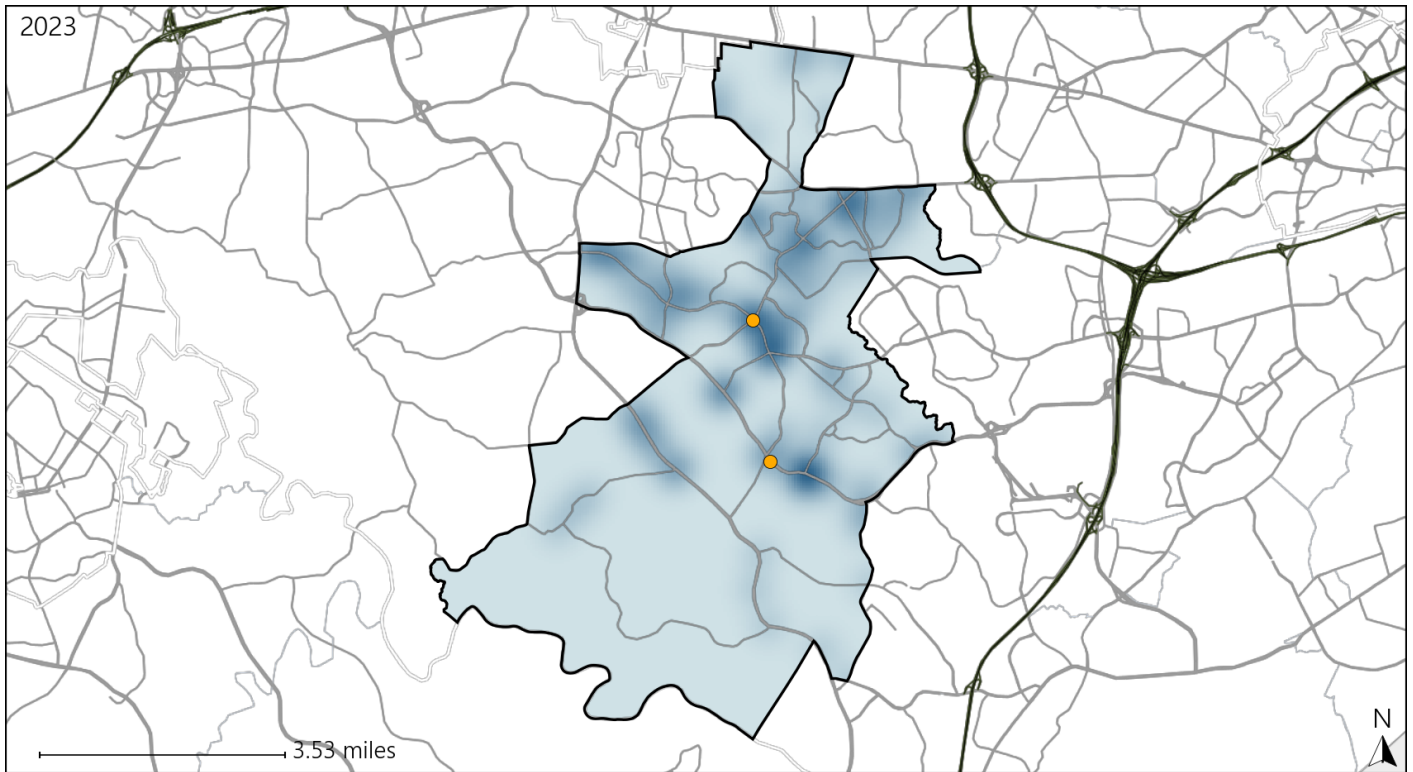


Available Crash Data - Calendar Year (CY)	CY 2020	CY 2021	CY 2022	CY 2023
<b>Total Crashes</b>	<b>292</b>	<b>376</b>	<b>418</b>	<b>457</b>
<b>Fatalities</b>	<b>1</b>	<b>3</b>	<b>6</b>	<b>5</b>
<b>Injuries</b>	<b>101</b>	<b>198</b>	<b>184</b>	<b>224</b>
<b>Unrestrained Fatalities</b>	<b>1</b>	<b>1</b>	<b>0</b>	<b>1</b>
<b>Percent of Unrestrained Fatalities to Total Fatalities</b>	<b>100%</b>	<b>33%</b>	<b>0%</b>	<b>20%</b>
<b>Unrestrained Injuries</b>	<b>2</b>	<b>10</b>	<b>3</b>	<b>6</b>
<b>Percent of Unrestrained Injuries to Total Injuries</b>	<b>2%</b>	<b>5%</b>	<b>2%</b>	<b>3%</b>

# Virginia House District 15 Distracted Driving Crash Statistics

Report Generated May, 2024

	Count	Highest Time Period(s)	Highest Day(s)	Highest Month(s)
<b>Fatal Crashes</b>	0	-	-	-
<b>Resulting Fatalities</b>	0	-	-	-
<b>Serious Injury Crashes</b>	2	6:00am - 8:59am Noon - 2:59pm (100%)	Friday • Wednesday (100%)	February (100%)



### House District 15 Distracted Driving-Related Crashes

- |                    |                        |
|--------------------|------------------------|
| Interstate Crashes | Non-interstate Crashes |
| ● Fatal            | ● Fatal                |
| ⊕ Serious Injury   | ● Serious Injury       |

The blue gradient represents the density of all distracted driving-related crashes.



Available Crash Data - Calendar Year (CY)	CY 2020	CY 2021	CY 2022	CY 2023
Total Crashes	292	376	418	457
Fatal Crashes	1	3	6	4
Injury Crashes	72	129	122	137
Distracted Driving-Related Fatal Crashes	1	0	1	0
Percent of Distracted Driving-Related Fatal Crashes to Total Fatal Crashes	100%	0%	17%	0%
Distracted Driving-Related Injury Crashes	13	26	29	39
Percent of Distracted Driving-Related Injury Crashes to Total Injury Crashes	18%	20%	24%	28%