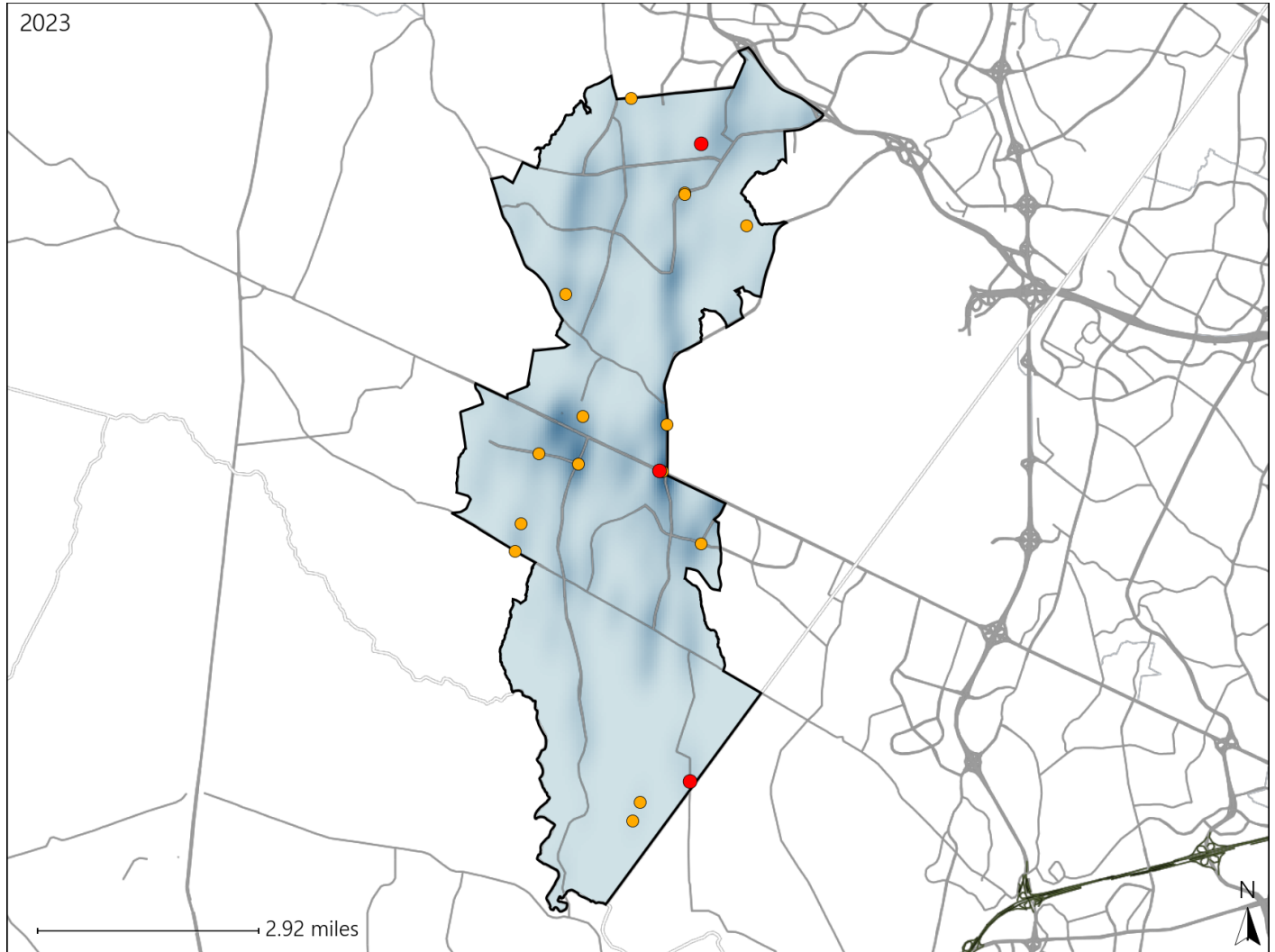


# Virginia House District 26 Crash Statistics

Report Generated May, 2024

	Count	Highest Time Period(s)	Highest Day(s)	Highest Month(s)
<b>Fatal Crashes</b>	<b>3</b>	3:00pm - 5:59pm	Friday • Monday	August • October
<b>Resulting Fatalities</b>	<b>3</b>	6:00am - 8:59am (66%)	(66%)	(66%)
<b>Serious Injury Crashes</b>	<b>15</b>	3:00pm - 5:59pm (47%)	Wednesday (27%)	February (20%)



### House District 26 Crashes

Interstate Crashes

- Fatal
- Serious Injury

Non-interstate Crashes

- Fatal
- Serious Injury

The blue gradient represents the density of all crashes.

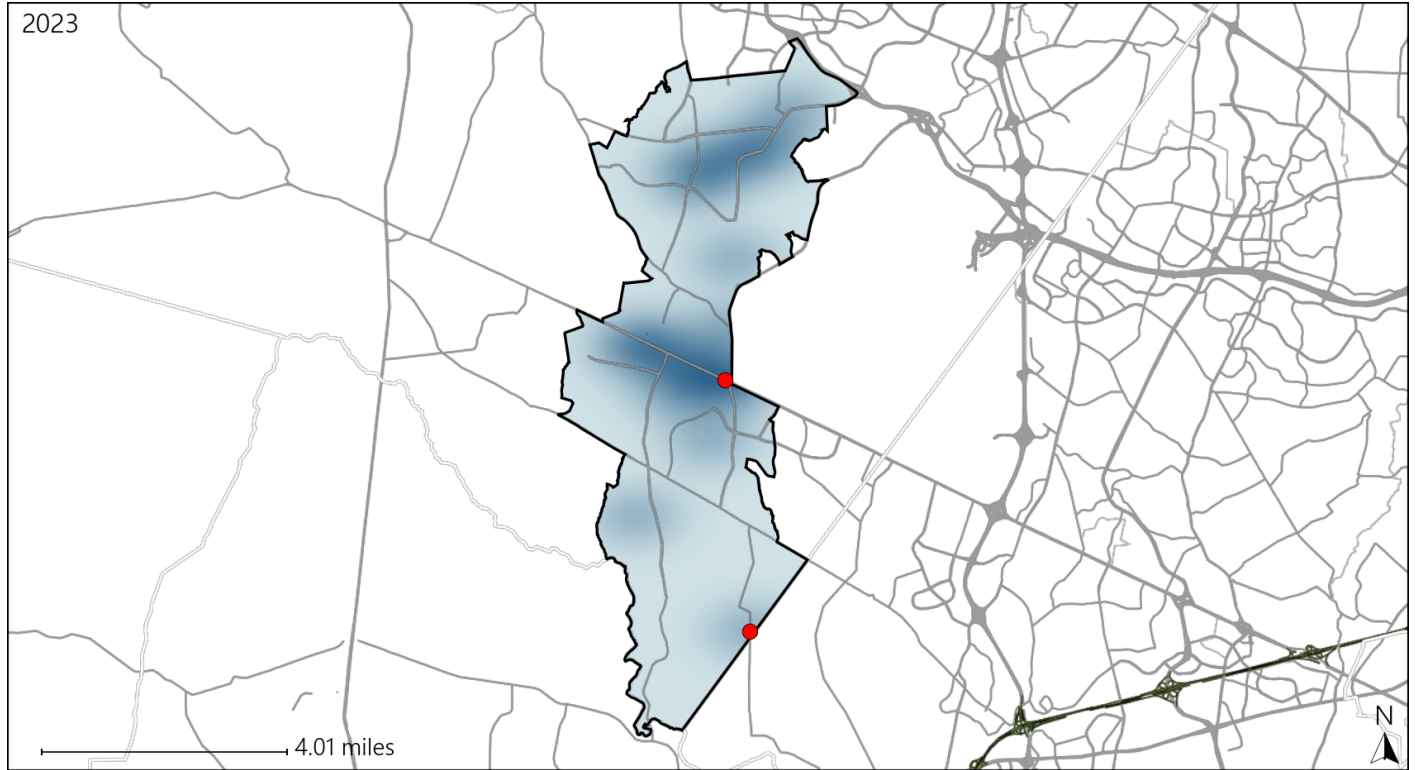


Available Crash Data - Calendar Year (CY)	CY 2020	CY 2021	CY 2022	CY 2023
Total Crashes	325	514	577	648
Fatal Crashes	1	1	1	3
Injury Crashes	72	124	125	149

# Virginia House District 26 Alcohol Crash Statistics

Report Generated May, 2024

	Count	Highest Time Period(s)	Highest Day(s)	Highest Month(s)
<b>Fatal Crashes</b>	<b>2</b>	6:00am - 8:59am	Friday • Wednesday	August • September
<b>Resulting Fatalities</b>	<b>2</b>	9:00am - 11:59am (100%)	(100%)	(100%)
<b>Serious Injury Crashes</b>	<b>0</b>	-	-	-



## House District 26 Alcohol-Related Crashes

- |  |  |
|--|--|
| Interstate Crashes                                   | Non-interstate Crashes                               |
| <span style="color: red;">●</span> Fatal             | <span style="color: red;">●</span> Fatal             |
| <span style="color: orange;">●</span> Serious Injury | <span style="color: orange;">●</span> Serious Injury |

The blue gradient represents the density of all alcohol-related crashes.

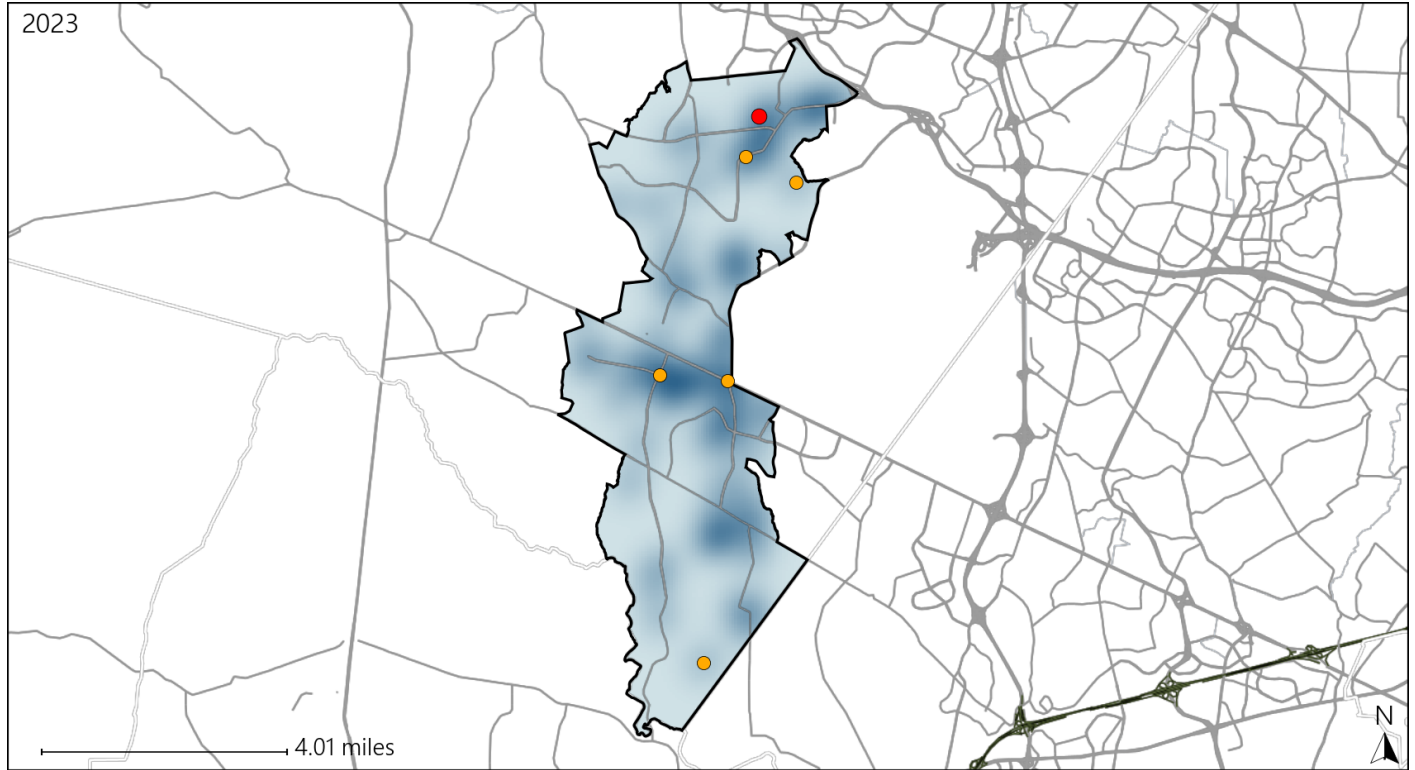


Available Crash Data - Calendar Year (CY)	CY 2020	CY 2021	CY 2022	CY 2023
Total Crashes	325	514	577	648
Fatal Crashes	1	1	1	3
Injury Crashes	72	124	125	149
Alcohol-Related Fatal Crashes	1	0	0	2
Percent of Alcohol-Related Fatal Crashes to Total Fatal Crashes	100%	0%	0%	67%
Alcohol-Related Injury Crashes	7	3	8	5
Percent of Alcohol-Related Injury Crashes to Total Injury Crashes	10%	2%	6%	3%

# Virginia House District 26 Speed Crash Statistics

Report Generated May, 2024

	Count	Highest Time Period(s)	Highest Day(s)	Highest Month(s)
<b>Fatal Crashes</b>	<b>1</b>	<b>3:00pm - 5:59pm</b>	<b>Monday</b>	<b>October</b>
<b>Resulting Fatalities</b>	<b>1</b>	(100%)	(100%)	(100%)
<b>Serious Injury Crashes</b>	<b>5</b>	<b>3:00am - 5:59am</b>	<b>Monday - Saturday</b>	<b>October</b>
		(40%)	(40%)	(40%)



## House District 26 Speed-Related Crashes

Interstate Crashes                      Non-interstate Crashes  
 ● Fatal                                      ● Fatal  
 ● Serious Injury                          ● Serious Injury

The blue gradient represents the density of all speed-related crashes.

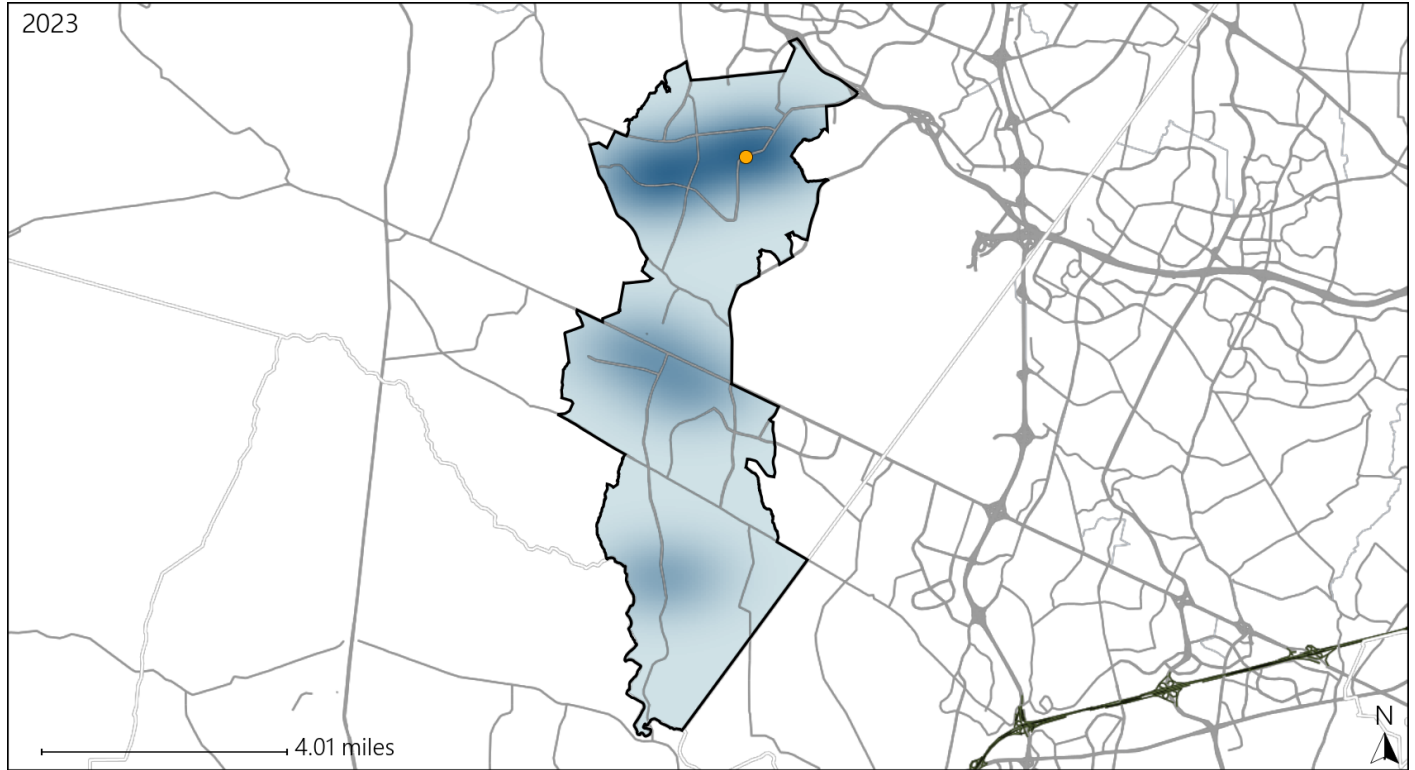


Available Crash Data - Calendar Year (CY)	CY 2020	CY 2021	CY 2022	CY 2023
<b>Total Crashes</b>	<b>325</b>	<b>514</b>	<b>577</b>	<b>648</b>
<b>Fatal Crashes</b>	<b>1</b>	<b>1</b>	<b>1</b>	<b>3</b>
<b>Injury Crashes</b>	<b>72</b>	<b>124</b>	<b>125</b>	<b>149</b>
<b>Speed-Related Fatal Crashes</b>	<b>0</b>	<b>0</b>	<b>0</b>	<b>1</b>
<b>Percent of Speed-Related Fatal Crashes to Total Fatal Crashes</b>	<b>0%</b>	<b>0%</b>	<b>0%</b>	<b>33%</b>
<b>Speed-Related Injury Crashes</b>	<b>12</b>	<b>12</b>	<b>12</b>	<b>21</b>
<b>Percent of Speed-Related Injury Crashes to Total Injury Crashes</b>	<b>17%</b>	<b>10%</b>	<b>10%</b>	<b>14%</b>

# Virginia House District 26 Unrestrained Crash Statistics

Report Generated May, 2024

	Count	Highest Time Period(s)	Highest Day(s)	Highest Month(s)
<b>Fatal Crashes</b>	0	-	-	-
<b>Unrestrained Fatalities</b>	0	-	-	-
<b>Serious Injury Crashes</b>	1	6:00am - 8:59am (100%)	Monday (100%)	December (100%)



## House District 26 Unrestrained-Related Crashes

Interstate Crashes

Non-interstate Crashes

- Fatal
- ⊕ Serious Injury

- Fatal
- ⊕ Serious Injury

The blue gradient represents the density of all unrestrained-related crashes.

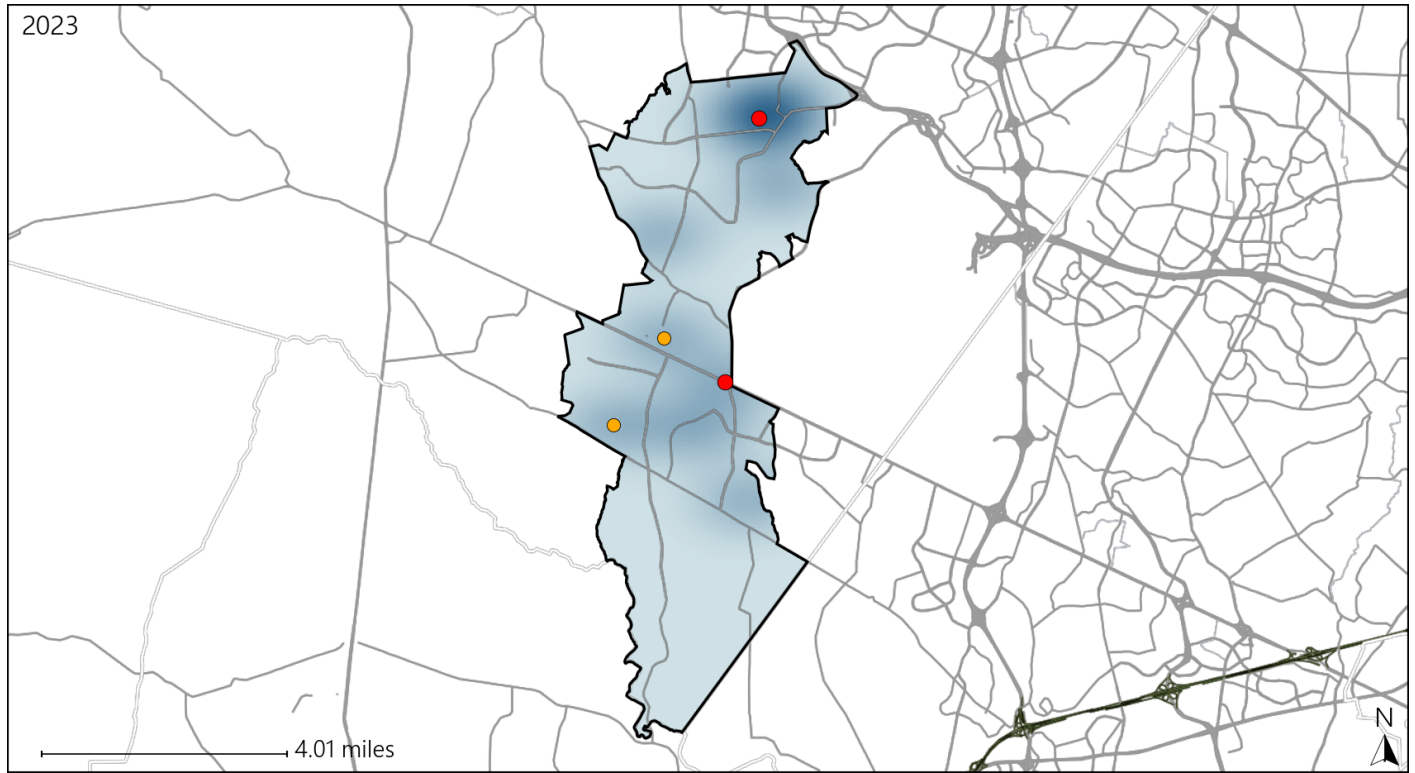


Available Crash Data - Calendar Year (CY)	CY 2020	CY 2021	CY 2022	CY 2023
<b>Total Crashes</b>	325	514	577	648
<b>Fatalities</b>	1	1	1	3
<b>Injuries</b>	125	184	203	246
<b>Unrestrained Fatalities</b>	0	0	0	0
<b>Percent of Unrestrained Fatalities to Total Fatalities</b>	0%	0%	0%	0%
<b>Unrestrained Injuries</b>	1	6	10	9
<b>Percent of Unrestrained Injuries to Total Injuries</b>	1%	3%	5%	4%

# Virginia House District 26 Pedestrian Crash Statistics

Report Generated May, 2024

	Count	Highest Time Period(s)	Highest Day(s)	Highest Month(s)
<b>Fatal Crashes</b>	<b>2</b>	3:00pm - 5:59pm	Friday • Monday	October • September
<b>Pedestrian Fatalities</b>	<b>2</b>	9:00am - 11:59am (100%)	(100%)	(100%)
<b>Serious Injury Crashes</b>	<b>2</b>	3:00pm - 5:59pm 6:00pm - 8:59pm (100%)	Monday • Thursday (100%)	February • June (100%)



### House District 26 Pedestrian-Related Crashes

Interstate Crashes                      Non-interstate Crashes  
 ● Fatal                                      ● Fatal  
 ⊕ Serious Injury                          ⊕ Serious Injury

The blue gradient represents the density of all pedestrian-related crashes.



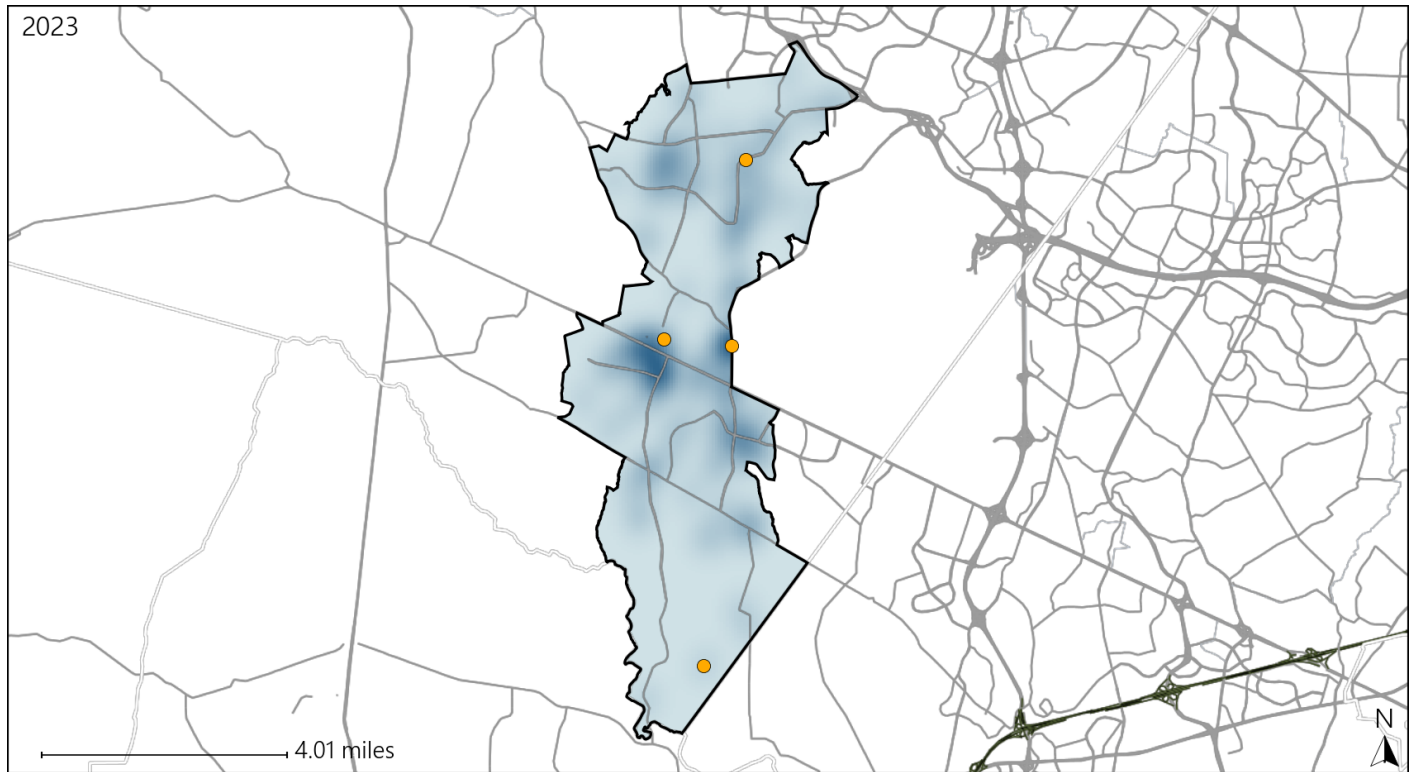
Available Crash Data - Calendar Year (CY)	CY 2020	CY 2021	CY 2022	CY 2023
Total Crashes	325	514	577	648
Fatal Crashes	1	1	1	3
Injury Crashes	72	124	125	149
Pedestrian-Related Fatal Crashes	0	0	0	2
Percent of Pedestrian-Related Fatal Crashes to Total Fatal Crashes	0%	0%	0%	67%
Pedestrian-Related Injury Crashes	4	5	6	8
Percent of Pedestrian-Related Injury Crashes to Total Injury Crashes	6%	4%	5%	5%



# Virginia House District 26 Distracted Driving Crash Statistics

Report Generated May, 2024

	Count	Highest Time Period(s)	Highest Day(s)	Highest Month(s)
<b>Fatal Crashes</b>	0	-	-	-
<b>Resulting Fatalities</b>	0	-	-	-
<b>Serious Injury Crashes</b>	4	3:00am - 5:59am 6:00am - 8:59am (50%)	Thursday (50%)	April - December (50%)



## House District 26 Distracted Driving-Related Crashes

- |                    |                        |
|--------------------|------------------------|
| Interstate Crashes | Non-interstate Crashes |
| ● Fatal            | ● Fatal                |
| ⊕ Serious Injury   | ● Serious Injury       |

The blue gradient represents the density of all distracted driving-related crashes.



Available Crash Data - Calendar Year (CY)	CY 2020	CY 2021	CY 2022	CY 2023
Total Crashes	325	514	577	648
Fatal Crashes	1	1	1	3
Injury Crashes	72	124	125	149
Distracted Driving-Related Fatal Crashes	0	0	0	0
Percent of Distracted Driving-Related Fatal Crashes to Total Fatal Crashes	0%	0%	0%	0%
Distracted Driving-Related Injury Crashes	19	23	26	30
Percent of Distracted Driving-Related Injury Crashes to Total Injury Crashes	26%	19%	21%	20%