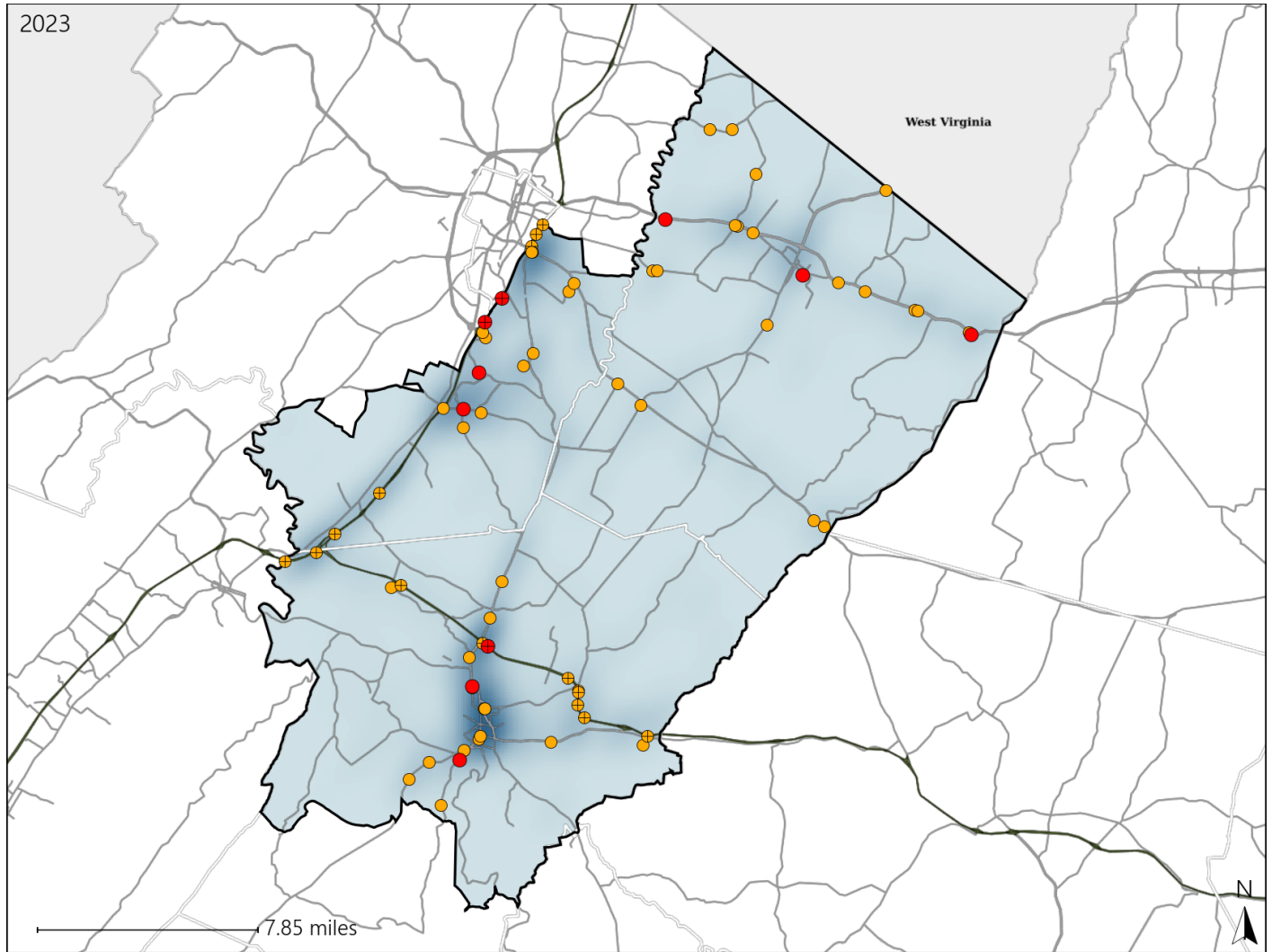


Virginia House District 31 Crash Statistics

Report Generated May, 2024

	Count	Highest Time Period(s)	Highest Day(s)	Highest Month(s)
Fatal Crashes	10	Midnight - 2:59am	Sunday	August • December
Resulting Fatalities	12	(30%)	(40%)	(40%)
Serious Injury Crashes	61	9:00am - 11:59am	Friday	February • July
		(21%)	(20%)	(22%)



House District 31 Crashes

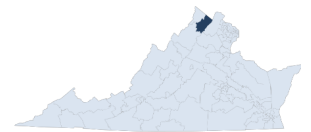
Interstate Crashes

- Fatal
- Serious Injury

Non-interstate Crashes

- Fatal
- Serious Injury

The blue gradient represents the density of all crashes.

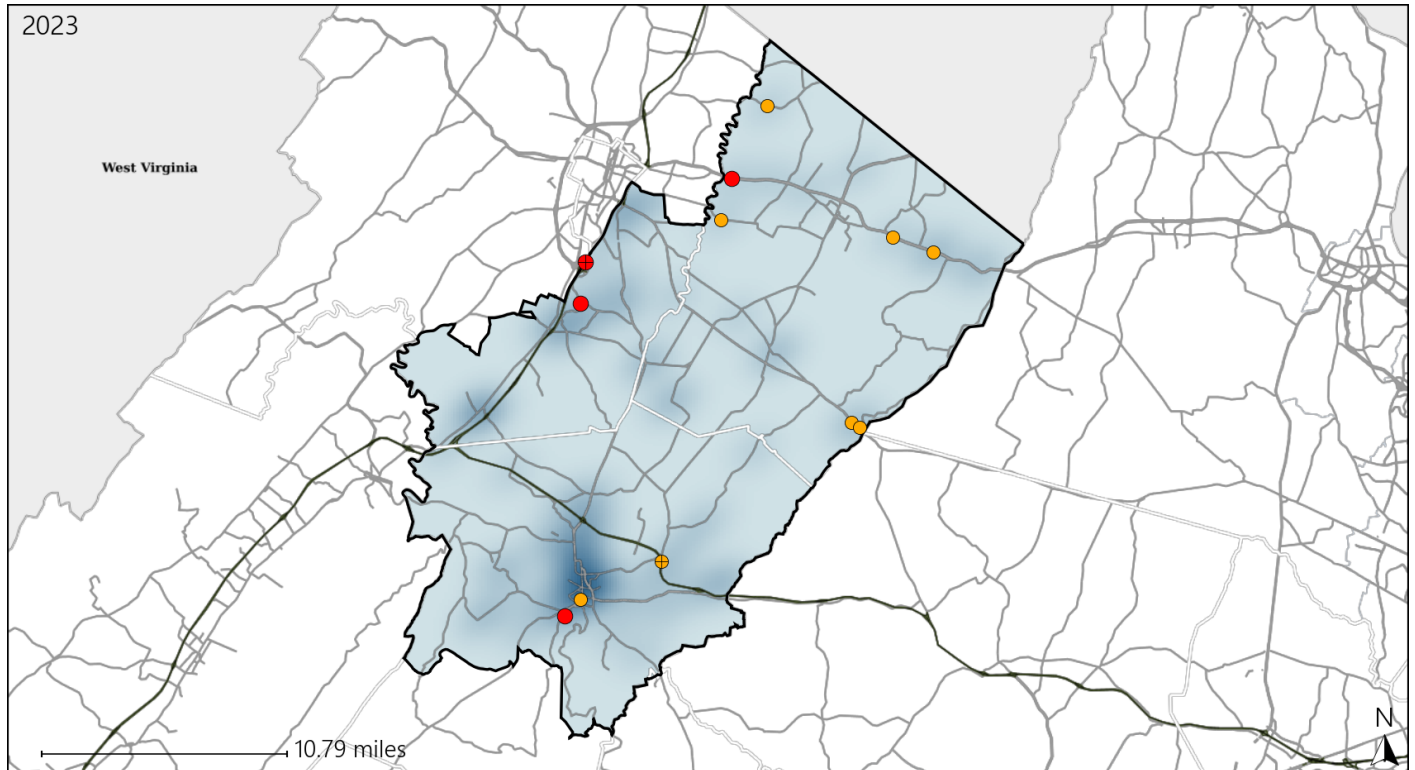


Available Crash Data - Calendar Year (CY)	CY 2020	CY 2021	CY 2022	CY 2023
Total Crashes	1056	1106	1212	1344
Fatal Crashes	8	6	12	10
Injury Crashes	317	358	297	362

Virginia House District 31 Alcohol Crash Statistics

Report Generated May, 2024

	Count	Highest Time Period(s)	Highest Day(s)	Highest Month(s)
Fatal Crashes	4	Midnight - 2:59am	Sunday	August • December
Resulting Fatalities	6	(50%)	(50%)	(50%)
Serious Injury Crashes	8	6:00pm - 8:59pm	Friday • Thursday	December • October
		(38%)	(50%)	(50%)



House District 31 Alcohol-Related Crashes

Interstate Crashes

Non-interstate Crashes

● Fatal

● Fatal

⊕ Serious Injury

⊕ Serious Injury

The blue gradient represents the density of all alcohol-related crashes.

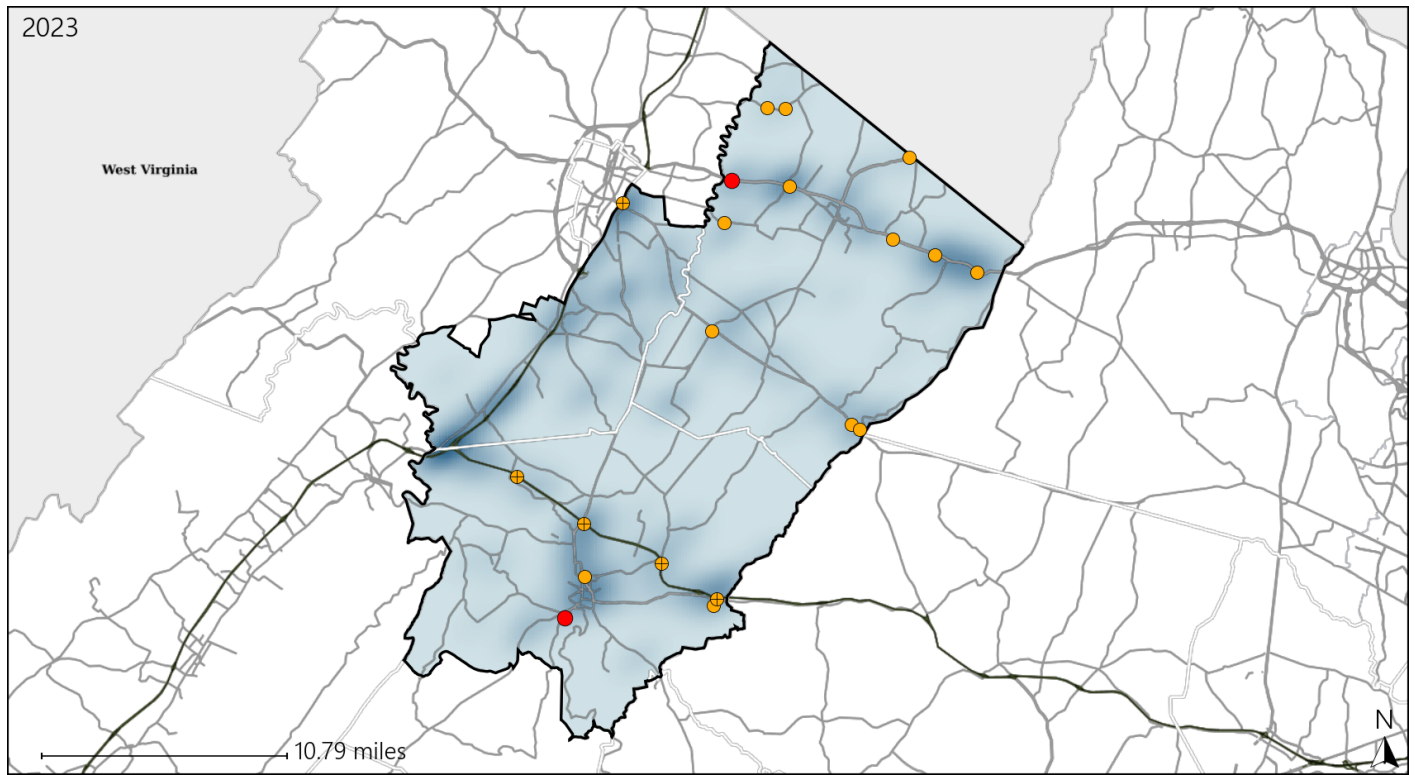


Available Crash Data - Calendar Year (CY)	CY 2020	CY 2021	CY 2022	CY 2023
Total Crashes	1056	1106	1212	1344
Fatal Crashes	8	6	12	10
Injury Crashes	317	358	297	362
Alcohol-Related Fatal Crashes	3	3	2	4
Percent of Alcohol-Related Fatal Crashes to Total Fatal Crashes	38%	50%	17%	40%
Alcohol-Related Injury Crashes	34	29	14	29
Percent of Alcohol-Related Injury Crashes to Total Injury Crashes	11%	8%	5%	8%

Virginia House District 31 Speed Crash Statistics

Report Generated May, 2024

	Count	Highest Time Period(s)	Highest Day(s)	Highest Month(s)
Fatal Crashes	2	9:00pm - 11:59pm	Sunday • Tuesday	December • March
Resulting Fatalities	4	Midnight - 2:59am (100%)	(100%)	(100%)
Serious Injury Crashes	18	6:00pm - 8:59pm 9:00am - 11:59am (34%)	Friday • Saturday (44%)	July (17%)



House District 31 Speed-Related Crashes

Interstate Crashes Non-interstate Crashes
 ● Fatal ● Fatal
 ⊕ Serious Injury ⊕ Serious Injury

The blue gradient represents the density of all speed-related crashes.

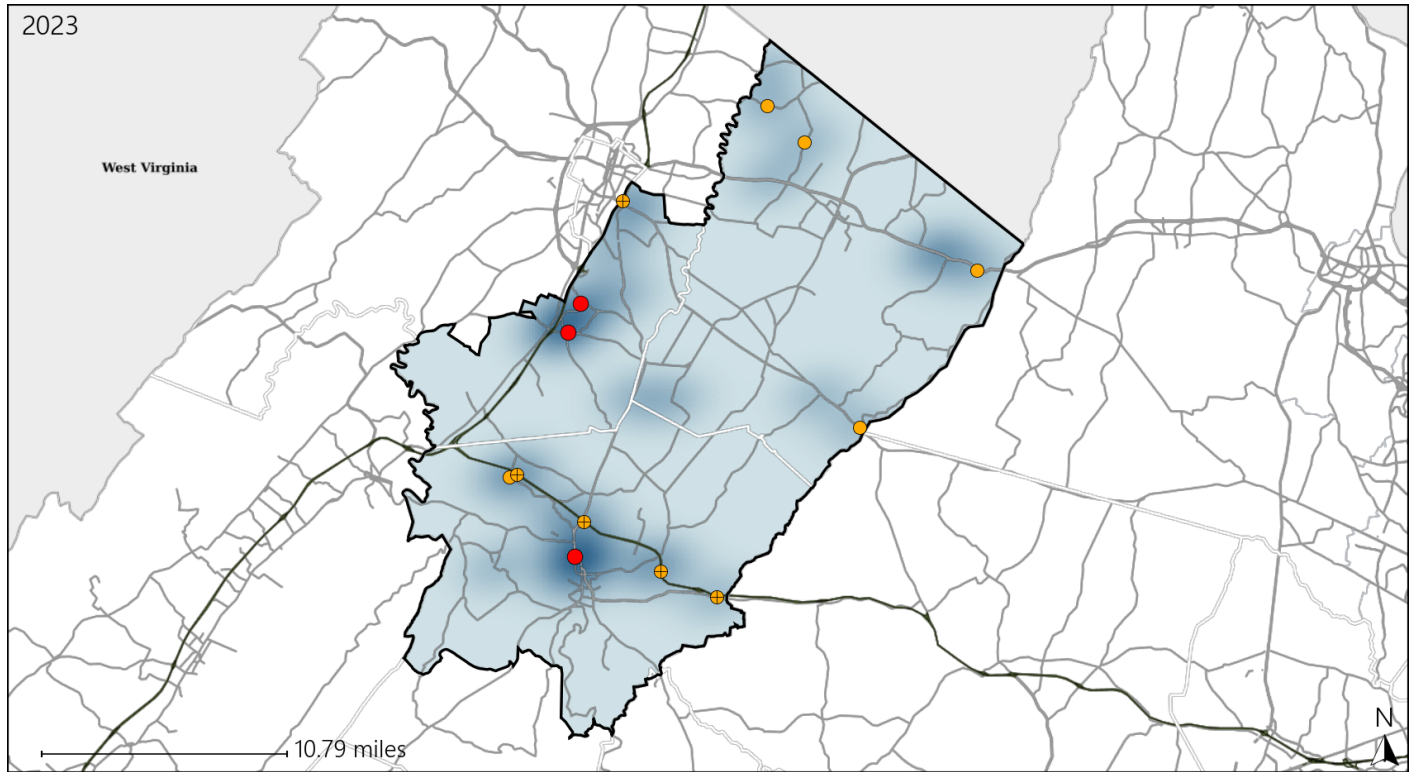


Available Crash Data - Calendar Year (CY)	CY 2020	CY 2021	CY 2022	CY 2023
Total Crashes	1056	1106	1212	1344
Fatal Crashes	8	6	12	10
Injury Crashes	317	358	297	362
Speed-Related Fatal Crashes	6	4	6	2
Percent of Speed-Related Fatal Crashes to Total Fatal Crashes	75%	67%	50%	20%
Speed-Related Injury Crashes	90	89	82	83
Percent of Speed-Related Injury Crashes to Total Injury Crashes	28%	25%	28%	23%

Virginia House District 31 Unrestrained Crash Statistics

Report Generated May, 2024

	Count	Highest Time Period(s)	Highest Day(s)	Highest Month(s)
Fatal Crashes	3	3:00pm - 5:59pm	Monday	July - May
Unrestrained Fatalities	3	(67%)	(67%)	(66%)
Serious Injury Crashes	10	Noon - 2:59pm	Friday	February
		(30%)	(40%)	(30%)



House District 31 Unrestrained-Related Crashes

Interstate Crashes

Non-interstate Crashes

- Fatal
- ⊕ Serious Injury

- Fatal
- Serious Injury

The blue gradient represents the density of all unrestrained-related crashes.

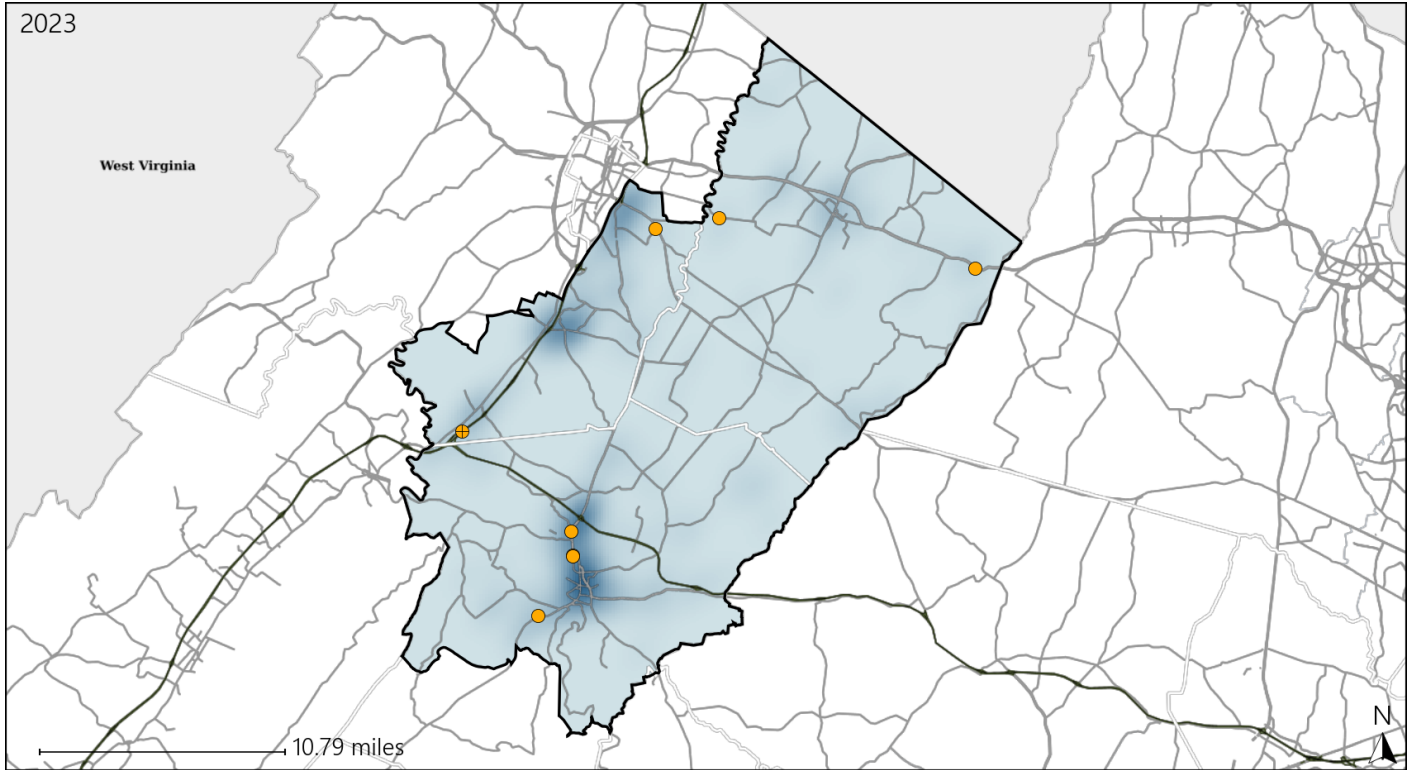


Available Crash Data - Calendar Year (CY)	CY 2020	CY 2021	CY 2022	CY 2023
Total Crashes	1056	1106	1212	1344
Fatalities	9	6	13	12
Injuries	445	510	423	543
Unrestrained Fatalities	1	3	3	3
Percent of Unrestrained Fatalities to Total Fatalities	11%	50%	23%	25%
Unrestrained Injuries	34	24	38	34
Percent of Unrestrained Injuries to Total Injuries	8%	5%	9%	6%

Virginia House District 31 Distracted Driving Crash Statistics

Report Generated May, 2024

	Count	Highest Time Period(s)	Highest Day(s)	Highest Month(s)
Fatal Crashes	0	-	-	-
Resulting Fatalities	0	-	-	-
Serious Injury Crashes	8	Midnight - 2:59am (38%)	Monday (38%)	November • September (50%)



House District 31 Distracted Driving-Related Crashes

- | | |
|--------------------|------------------------|
| Interstate Crashes | Non-interstate Crashes |
| ● Fatal | ● Fatal |
| ⊕ Serious Injury | ● Serious Injury |

The blue gradient represents the density of all distracted driving-related crashes.



Available Crash Data - Calendar Year (CY)	CY 2020	CY 2021	CY 2022	CY 2023
Total Crashes	1056	1106	1212	1344
Fatal Crashes	8	6	12	10
Injury Crashes	317	358	297	362
Distracted Driving-Related Fatal Crashes	2	1	1	0
Percent of Distracted Driving-Related Fatal Crashes to Total Fatal Crashes	25%	17%	8%	0%
Distracted Driving-Related Injury Crashes	67	76	62	75
Percent of Distracted Driving-Related Injury Crashes to Total Injury Crashes	21%	21%	21%	21%