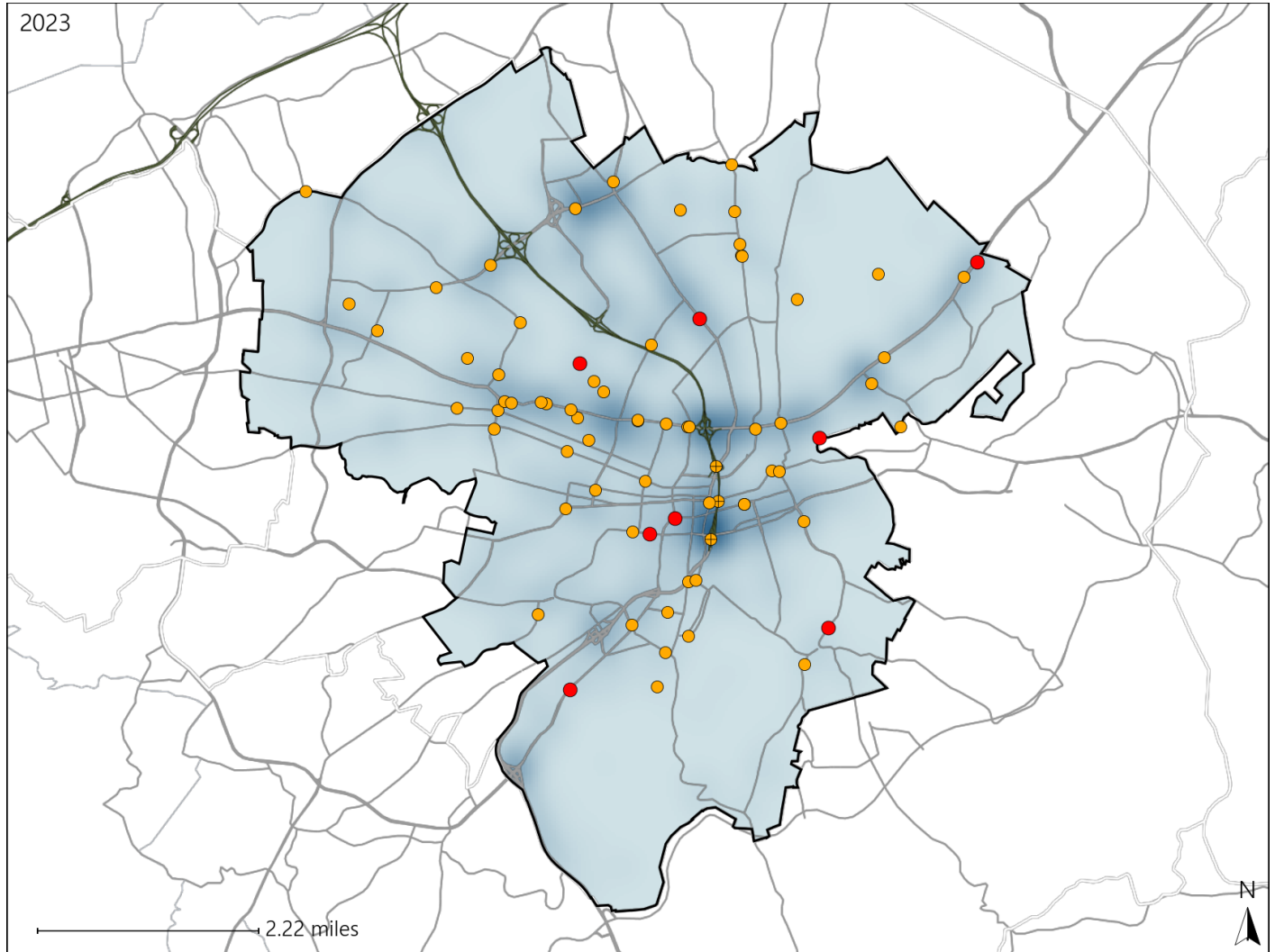


Virginia House District 38 Crash Statistics

Report Generated May, 2024

	Count	Highest Time Period(s)	Highest Day(s)	Highest Month(s)
Fatal Crashes	8	6:00pm - 8:59pm	Friday • Monday	June
Resulting Fatalities	8	9:00pm - 11:59pm (50%)	(50%)	(25%)
Serious Injury Crashes	66	3:00pm - 5:59pm (24%)	Wednesday (23%)	October (20%)



House District 38 Crashes

Interstate Crashes

- Fatal
- Serious Injury

Non-interstate Crashes

- Fatal
- Serious Injury

The blue gradient represents the density of all crashes.

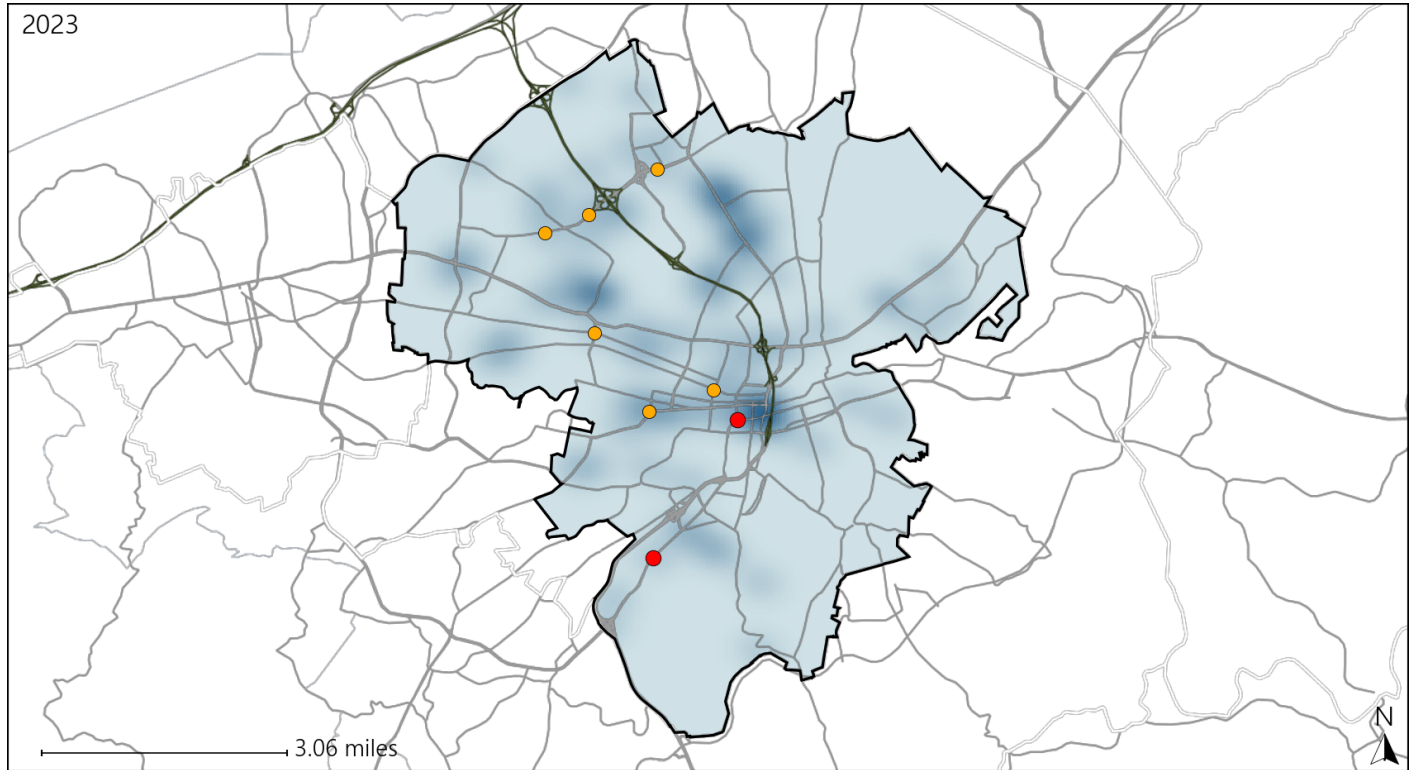


Available Crash Data - Calendar Year (CY)	CY 2020	CY 2021	CY 2022	CY 2023
Total Crashes	1497	1642	1851	2047
Fatal Crashes	13	10	8	8
Injury Crashes	372	386	396	468

Virginia House District 38 Alcohol Crash Statistics

Report Generated May, 2024

	Count	Highest Time Period(s)	Highest Day(s)	Highest Month(s)
Fatal Crashes	2	9:00pm - 11:59pm	Thursday • Tuesday	January • June
Resulting Fatalities	2	Midnight - 2:59am (100%)	(100%)	(100%)
Serious Injury Crashes	6	6:00pm - 8:59pm (33%)	Wednesday (50%)	March (33%)



House District 38 Alcohol-Related Crashes

Interstate Crashes Non-interstate Crashes
 ● Fatal ● Fatal
 ● Serious Injury ● Serious Injury

The blue gradient represents the density of all alcohol-related crashes.

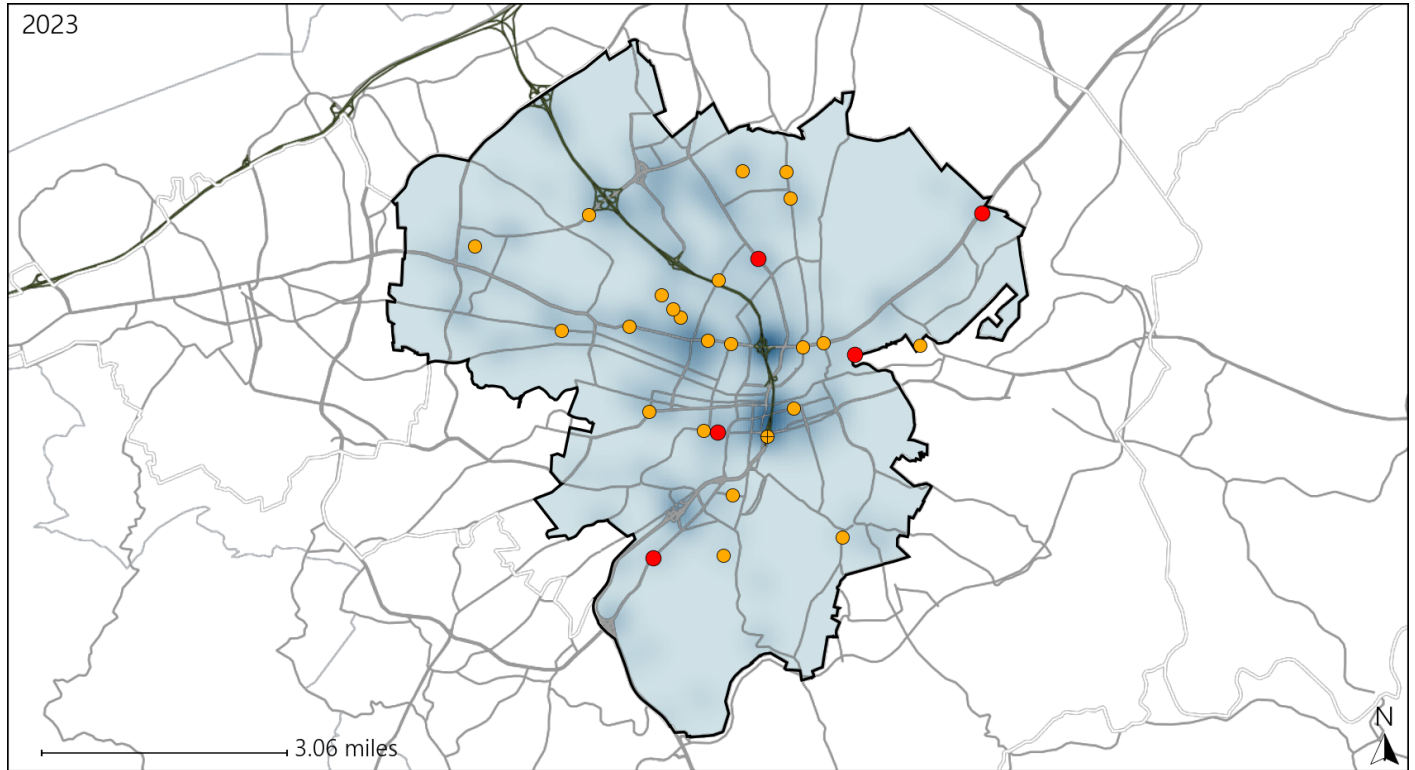


Available Crash Data - Calendar Year (CY)	CY 2020	CY 2021	CY 2022	CY 2023
Total Crashes	1497	1642	1851	2047
Fatal Crashes	13	10	8	8
Injury Crashes	372	386	396	468
Alcohol-Related Fatal Crashes	6	2	0	2
Percent of Alcohol-Related Fatal Crashes to Total Fatal Crashes	46%	20%	0%	25%
Alcohol-Related Injury Crashes	35	29	31	22
Percent of Alcohol-Related Injury Crashes to Total Injury Crashes	9%	8%	8%	5%

Virginia House District 38 Speed Crash Statistics

Report Generated May, 2024

	Count	Highest Time Period(s)	Highest Day(s)	Highest Month(s)
Fatal Crashes	5	3:00am - 5:59am	Monday	August • February
Resulting Fatalities	5	3:00pm - 5:59pm (40%)	(40%)	(40%)
Serious Injury Crashes	23	3:00pm - 5:59pm (30%)	Saturday (30%)	March • October (34%)



House District 38 Speed-Related Crashes

Interstate Crashes

Non-interstate Crashes

- Fatal
- Serious Injury

- Fatal
- Serious Injury

The blue gradient represents the density of all speed-related crashes.

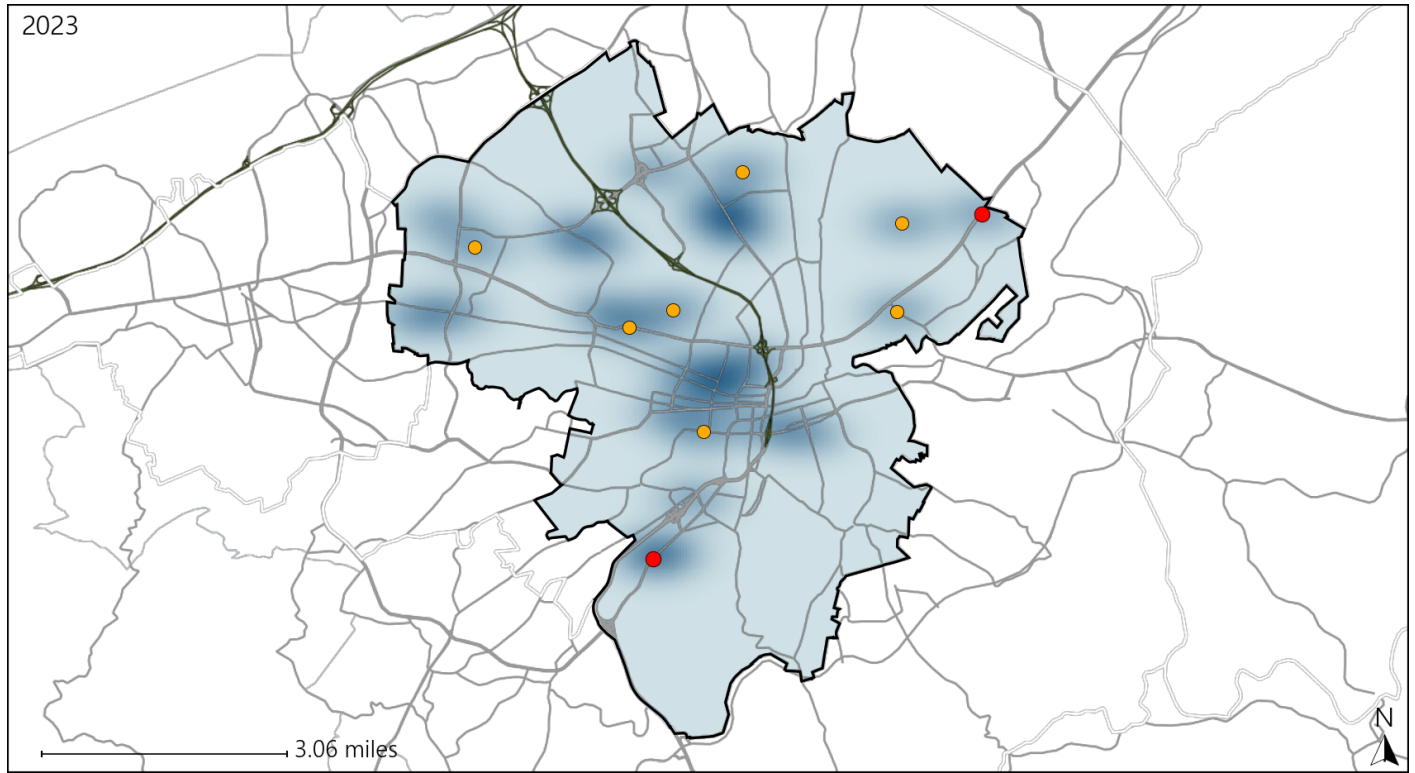


Available Crash Data - Calendar Year (CY)	CY 2020	CY 2021	CY 2022	CY 2023
Total Crashes	1497	1642	1851	2047
Fatal Crashes	13	10	8	8
Injury Crashes	372	386	396	468
Speed-Related Fatal Crashes	6	3	4	5
Percent of Speed-Related Fatal Crashes to Total Fatal Crashes	46%	30%	50%	63%
Speed-Related Injury Crashes	72	73	96	84
Percent of Speed-Related Injury Crashes to Total Injury Crashes	19%	19%	24%	18%

Virginia House District 38 Unrestrained Crash Statistics

Report Generated May, 2024

	Count	Highest Time Period(s)	Highest Day(s)	Highest Month(s)
Fatal Crashes	2	3:00pm - 5:59pm	Monday • Thursday	August • January
Unrestrained Fatalities	2	Midnight - 2:59am (100%)	(100%)	(100%)
Serious Injury Crashes	7	6:00pm - 8:59pm	Saturday	February • January
		Midnight - 2:59am (58%)	(43%)	(58%)



House District 38 Unrestrained-Related Crashes

- | | |
|--------------------|------------------------|
| Interstate Crashes | Non-interstate Crashes |
| ● Fatal | ● Fatal |
| ⊕ Serious Injury | ⊕ Serious Injury |

The blue gradient represents the density of all unrestrained-related crashes.

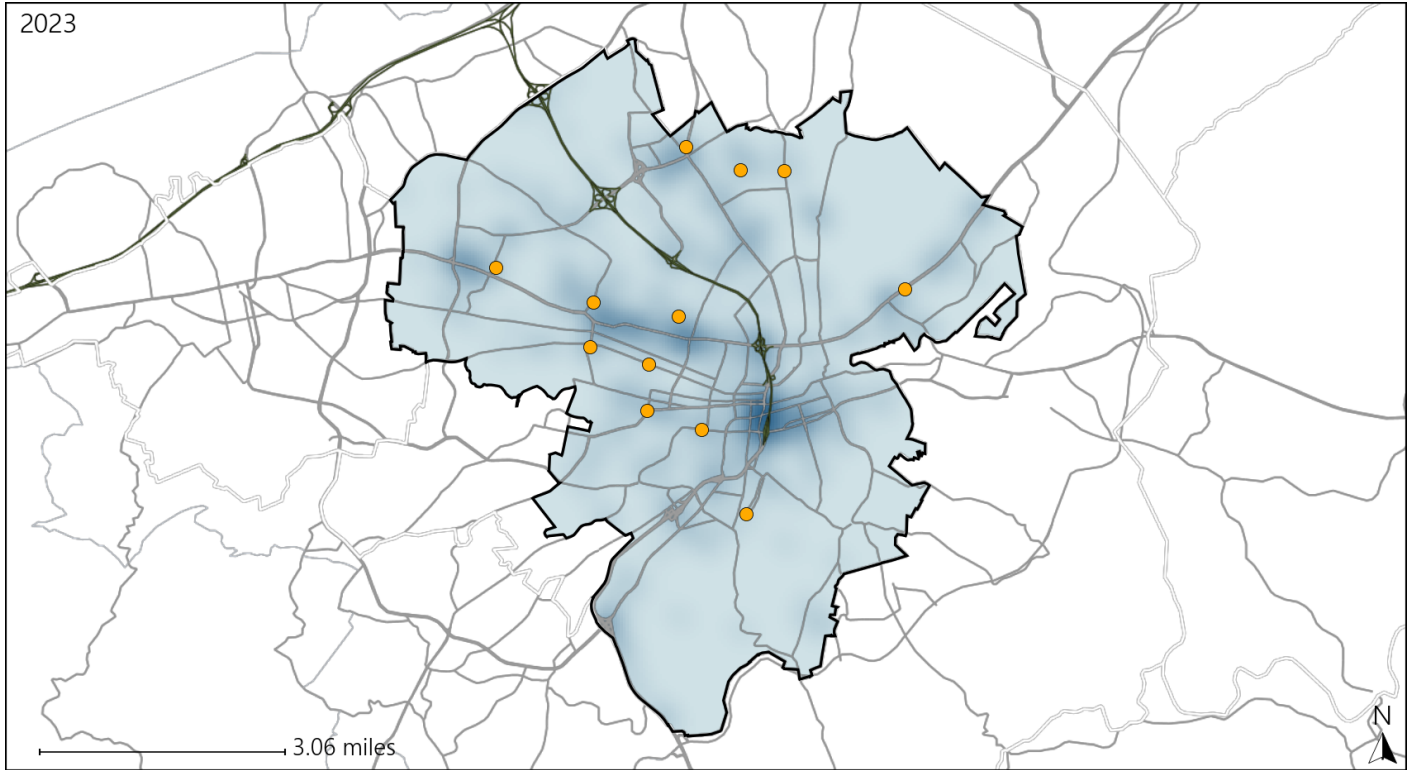


Available Crash Data - Calendar Year (CY)	CY 2020	CY 2021	CY 2022	CY 2023
Total Crashes	1497	1642	1851	2047
Fatalities	13	10	10	8
Injuries	610	620	645	739
Unrestrained Fatalities	1	3	3	2
Percent of Unrestrained Fatalities to Total Fatalities	8%	30%	30%	25%
Unrestrained Injuries	29	46	44	30
Percent of Unrestrained Injuries to Total Injuries	5%	7%	7%	4%

Virginia House District 38 Distracted Driving Crash Statistics

Report Generated May, 2024

	Count	Highest Time Period(s)	Highest Day(s)	Highest Month(s)
Fatal Crashes	0	-	-	-
Resulting Fatalities	0	-	-	-
Serious Injury Crashes	12	3:00pm - 5:59pm (25%)	Thursday (25%)	July (25%)



House District 38 Distracted Driving-Related Crashes

- | | |
|--------------------|------------------------|
| Interstate Crashes | Non-interstate Crashes |
| ● Fatal | ● Fatal |
| ● Serious Injury | ● Serious Injury |

The blue gradient represents the density of all distracted driving-related crashes.



Available Crash Data - Calendar Year (CY)	CY 2020	CY 2021	CY 2022	CY 2023
Total Crashes	1497	1642	1851	2047
Fatal Crashes	13	10	8	8
Injury Crashes	372	386	396	468
Distracted Driving-Related Fatal Crashes	3	2	1	0
Percent of Distracted Driving-Related Fatal Crashes to Total Fatal Crashes	23%	20%	13%	0%
Distracted Driving-Related Injury Crashes	81	84	92	81
Percent of Distracted Driving-Related Injury Crashes to Total Injury Crashes	22%	22%	23%	17%