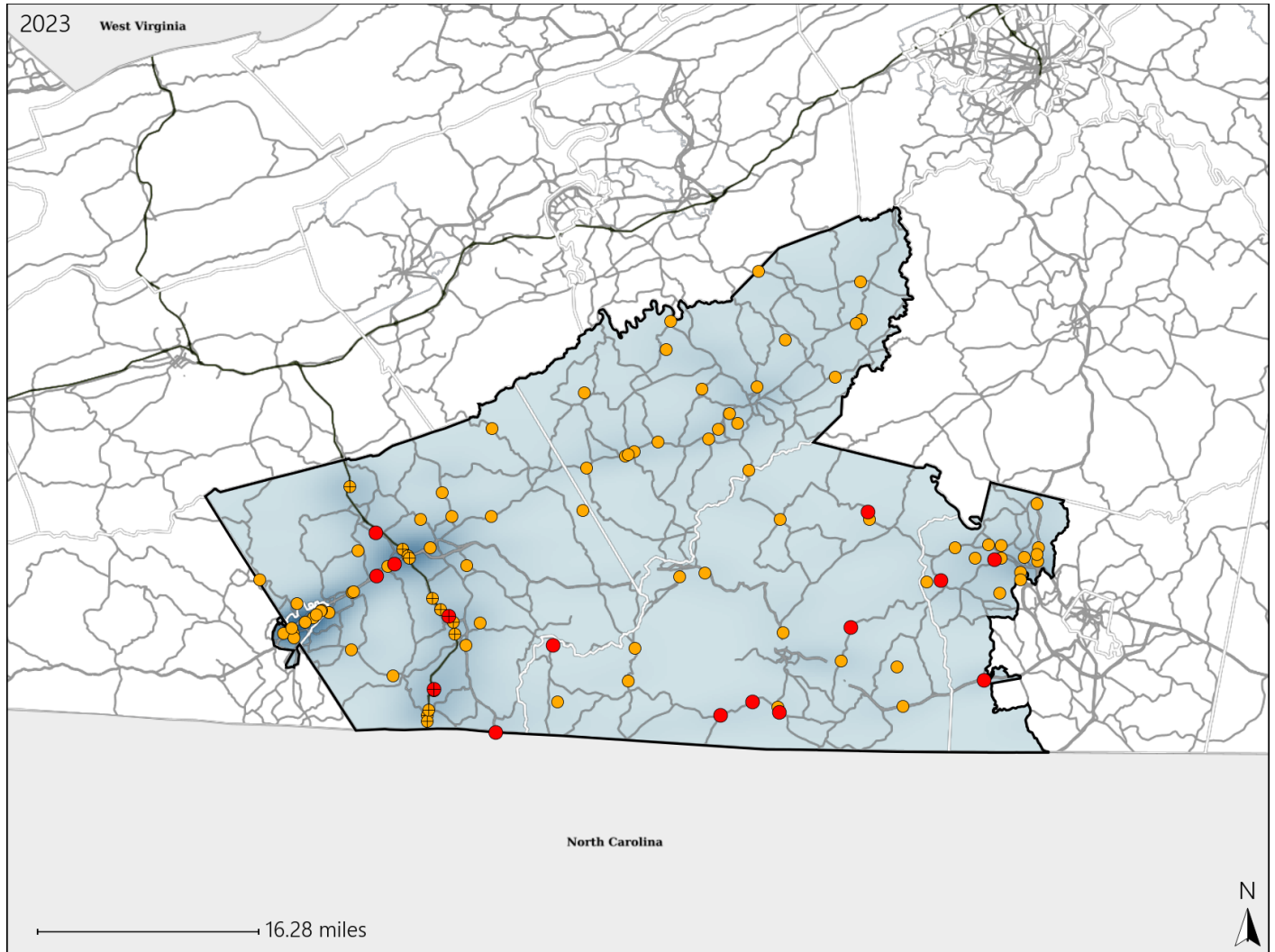


Virginia House District 47 Crash Statistics

Report Generated May, 2024

	Count	Highest Time Period(s)	Highest Day(s)	Highest Month(s)
Fatal Crashes	15	3:00pm - 5:59pm	Saturday	July
Resulting Fatalities	16	(33%)	(33%)	(20%)
Serious Injury Crashes	89	Noon - 2:59pm	Saturday • Sunday	July
		(24%)	(40%)	(13%)



House District 47 Crashes

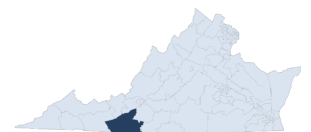
Interstate Crashes

- Fatal
- Serious Injury

Non-interstate Crashes

- Fatal
- Serious Injury

The blue gradient represents the density of all crashes.

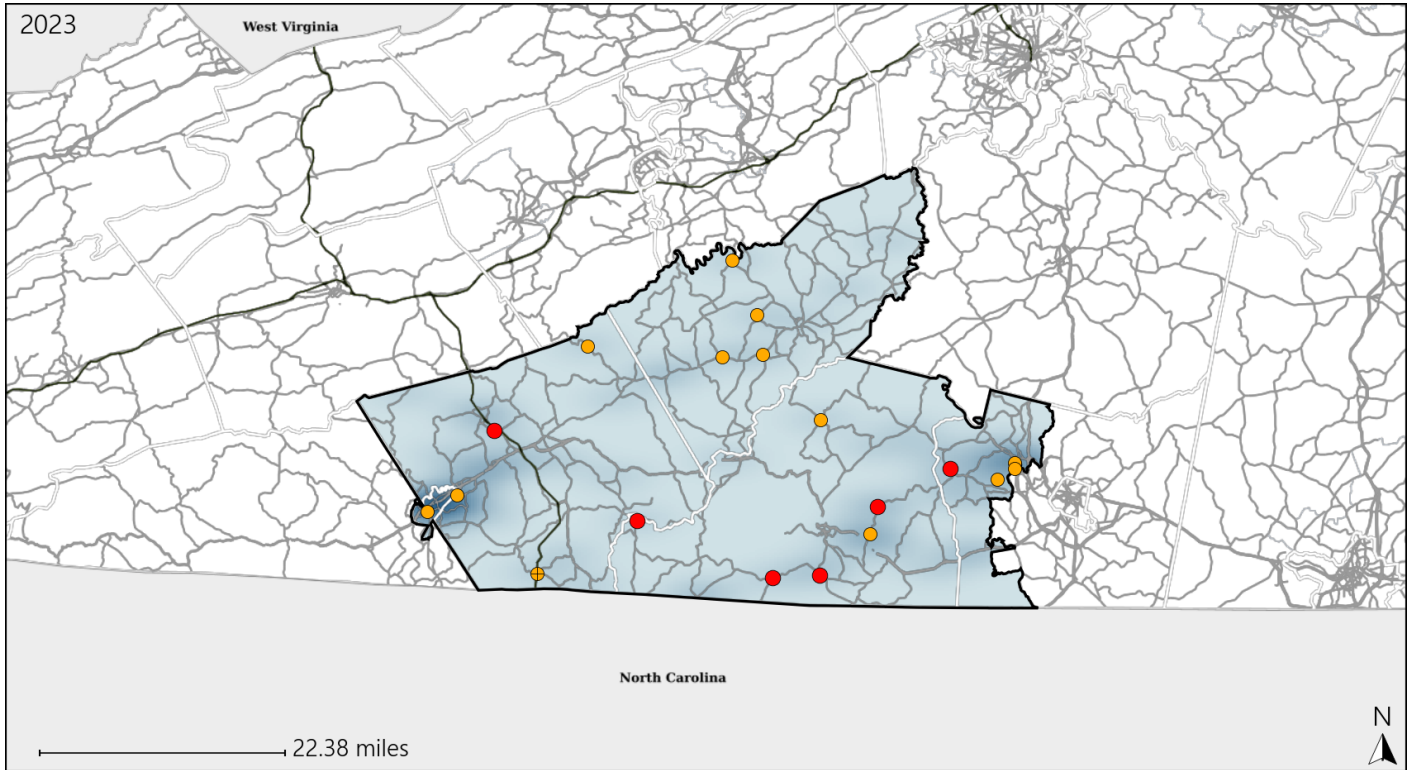


Available Crash Data - Calendar Year (CY)	CY 2020	CY 2021	CY 2022	CY 2023
Total Crashes	1055	1239	1320	1260
Fatal Crashes	14	10	22	15
Injury Crashes	275	313	323	331

Virginia House District 47 Alcohol Crash Statistics

Report Generated May, 2024

	Count	Highest Time Period(s)	Highest Day(s)	Highest Month(s)
Fatal Crashes	6	3:00pm - 5:59pm	Saturday	August • December
Resulting Fatalities	6	6:00pm - 8:59pm (66%)	(50%)	(34%)
Serious Injury Crashes	14	6:00pm - 8:59pm (36%)	Saturday (50%)	May (29%)



House District 47 Alcohol-Related Crashes

Interstate Crashes

- Fatal
- Serious Injury

Non-interstate Crashes

- Fatal
- Serious Injury

The blue gradient represents the density of all alcohol-related crashes.

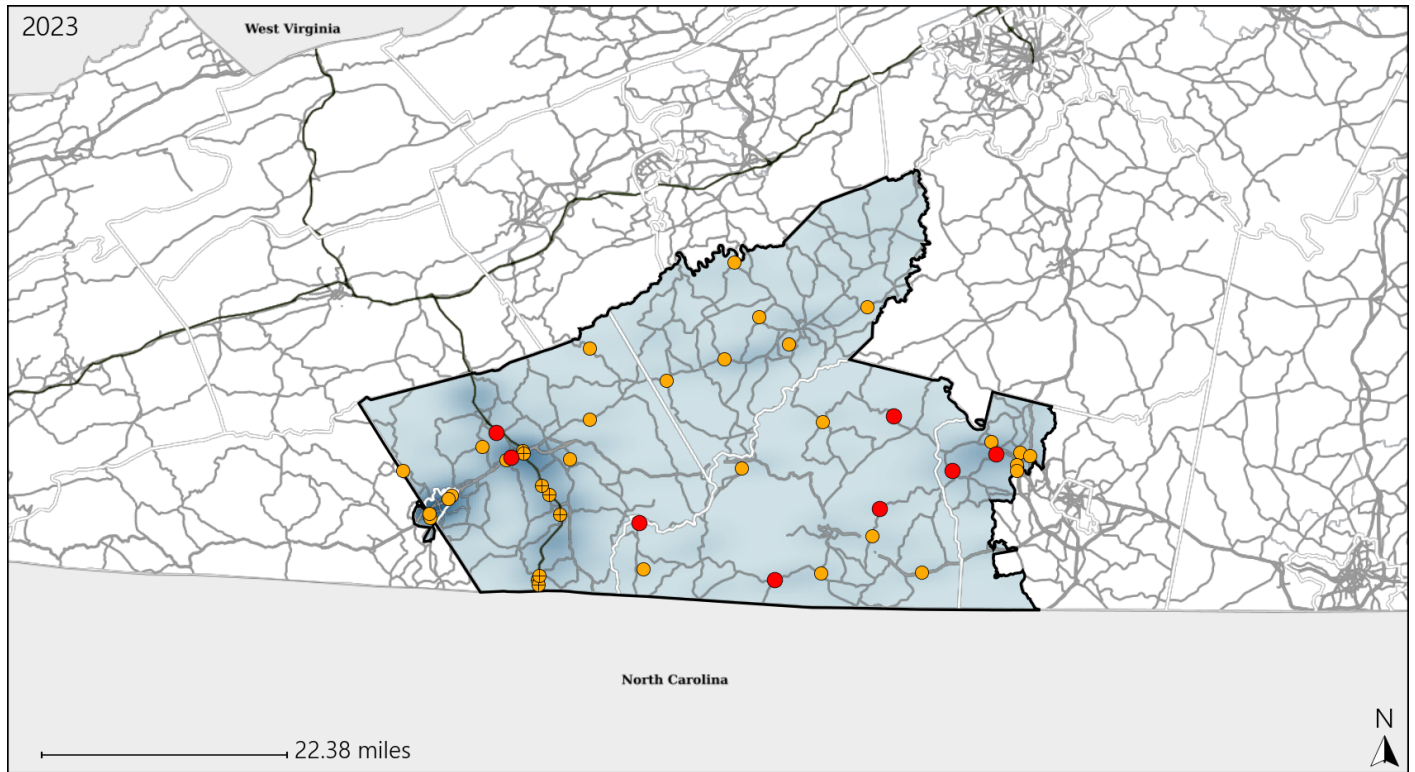


Available Crash Data - Calendar Year (CY)	CY 2020	CY 2021	CY 2022	CY 2023
Total Crashes	1055	1239	1320	1260
Fatal Crashes	14	10	22	15
Injury Crashes	275	313	323	331
Alcohol-Related Fatal Crashes	7	4	6	6
Percent of Alcohol-Related Fatal Crashes to Total Fatal Crashes	50%	40%	27%	40%
Alcohol-Related Injury Crashes	21	27	20	33
Percent of Alcohol-Related Injury Crashes to Total Injury Crashes	8%	9%	6%	10%

Virginia House District 47 Speed Crash Statistics

Report Generated May, 2024

	Count	Highest Time Period(s)	Highest Day(s)	Highest Month(s)
Fatal Crashes	8	3:00pm - 5:59pm	Saturday • Thursday	August • May
Resulting Fatalities	9	(38%)	(50%)	(50%)
Serious Injury Crashes	35	6:00pm - 8:59pm Noon - 2:59pm	Friday • Saturday	July
		(40%)	(52%)	(17%)



House District 47 Speed-Related Crashes

Interstate Crashes Non-interstate Crashes
 ● Fatal ● Fatal
 ⊕ Serious Injury ⊕ Serious Injury

The blue gradient represents the density of all speed-related crashes.

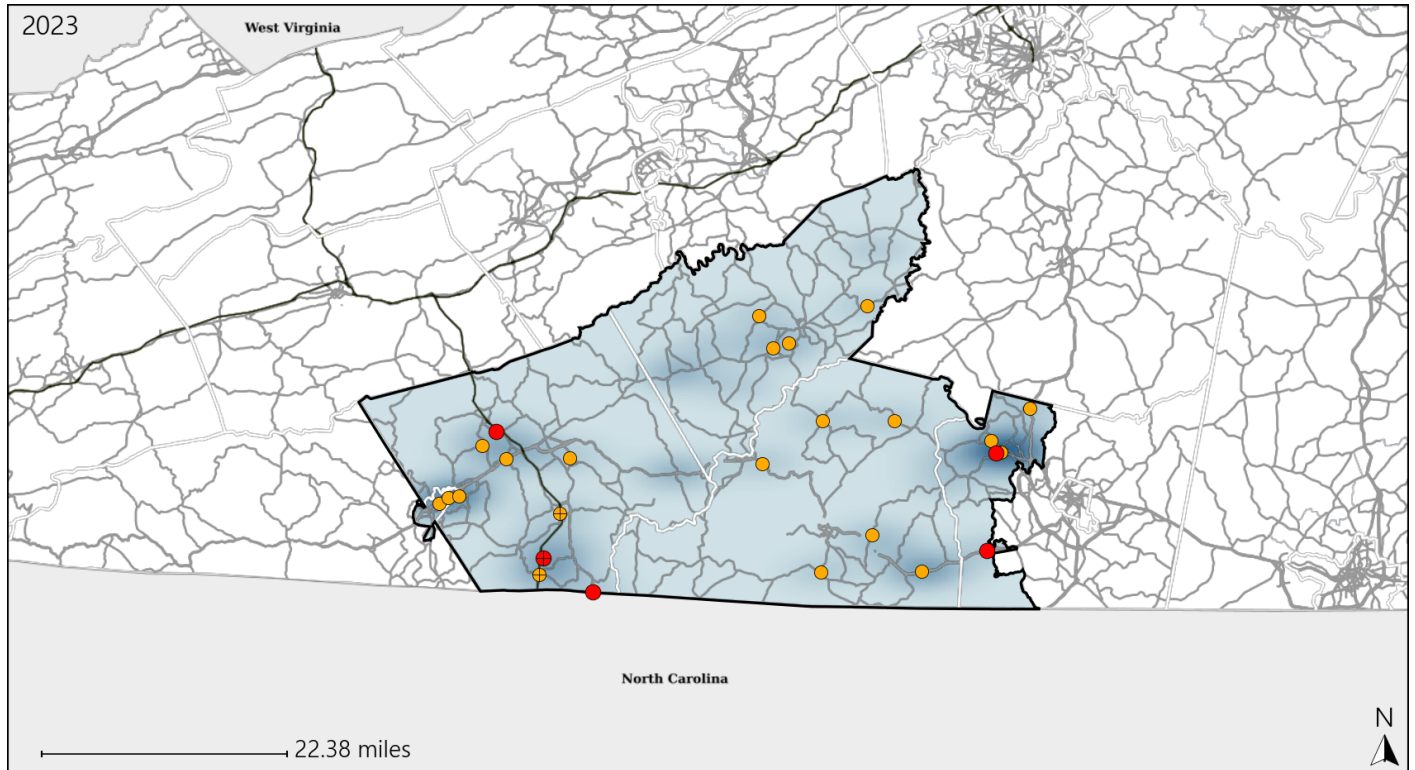


Available Crash Data - Calendar Year (CY)	CY 2020	CY 2021	CY 2022	CY 2023
Total Crashes	1055	1239	1320	1260
Fatal Crashes	14	10	22	15
Injury Crashes	275	313	323	331
Speed-Related Fatal Crashes	7	5	12	8
Percent of Speed-Related Fatal Crashes to Total Fatal Crashes	50%	50%	55%	53%
Speed-Related Injury Crashes	96	88	98	104
Percent of Speed-Related Injury Crashes to Total Injury Crashes	35%	28%	30%	31%

Virginia House District 47 Unrestrained Crash Statistics

Report Generated May, 2024

	Count	Highest Time Period(s)	Highest Day(s)	Highest Month(s)
Fatal Crashes	5	3:00pm - 5:59pm	Saturday	May
Unrestrained Fatalities	6	(40%)	(60%)	(40%)
Serious Injury Crashes	21	Noon - 2:59pm	Saturday	April - December
		(19%)	(33%)	(28%)



House District 47 Unrestrained-Related Crashes

Interstate Crashes

- Fatal
- ⊕ Serious Injury

Non-interstate Crashes

- Fatal
- Serious Injury

The blue gradient represents the density of all unrestrained-related crashes.

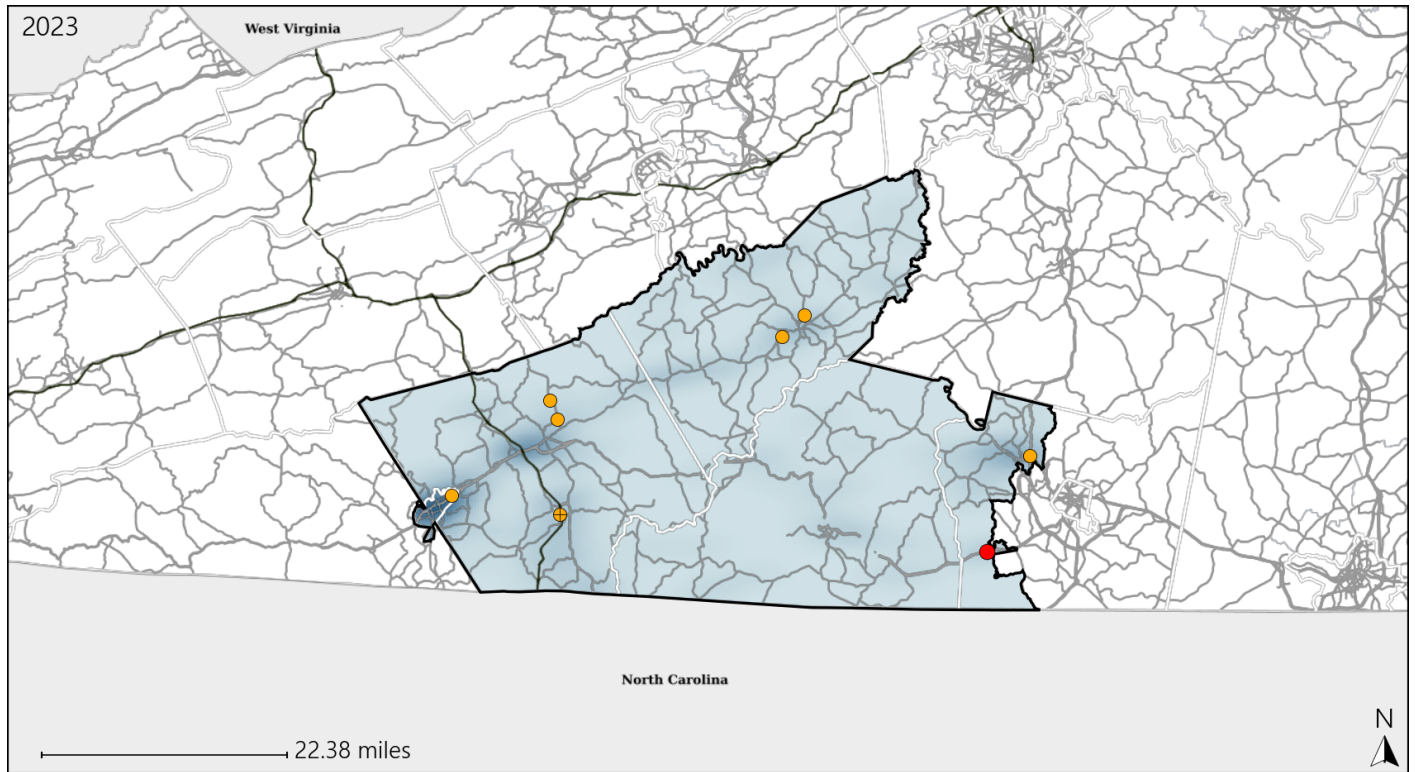


Available Crash Data - Calendar Year (CY)	CY 2020	CY 2021	CY 2022	CY 2023
Total Crashes	1055	1239	1320	1260
Fatalities	15	13	22	16
Injuries	367	422	462	464
Unrestrained Fatalities	9	4	14	6
Percent of Unrestrained Fatalities to Total Fatalities	60%	31%	64%	38%
Unrestrained Injuries	38	52	55	57
Percent of Unrestrained Injuries to Total Injuries	10%	12%	12%	12%

Virginia House District 47 Distracted Driving Crash Statistics

Report Generated May, 2024

	Count	Highest Time Period(s)	Highest Day(s)	Highest Month(s)
Fatal Crashes	1	3:00pm - 5:59pm	Sunday	March
Resulting Fatalities	1	(100%)	(100%)	(100%)
Serious Injury Crashes	7	3:00pm - 5:59pm Noon - 2:59pm	Thursday	June
		(58%)	(43%)	(29%)



House District 47 Distracted Driving-Related Crashes

- | | |
|--------------------|------------------------|
| Interstate Crashes | Non-interstate Crashes |
| Fatal | Fatal |
| Serious Injury | Serious Injury |

The blue gradient represents the density of all distracted driving-related crashes.



Available Crash Data - Calendar Year (CY)	CY 2020	CY 2021	CY 2022	CY 2023
Total Crashes	1055	1239	1320	1260
Fatal Crashes	14	10	22	15
Injury Crashes	275	313	323	331
Distracted Driving-Related Fatal Crashes	2	3	2	1
Percent of Distracted Driving-Related Fatal Crashes to Total Fatal Crashes	14%	30%	9%	7%
Distracted Driving-Related Injury Crashes	44	54	55	51
Percent of Distracted Driving-Related Injury Crashes to Total Injury Crashes	16%	17%	17%	15%