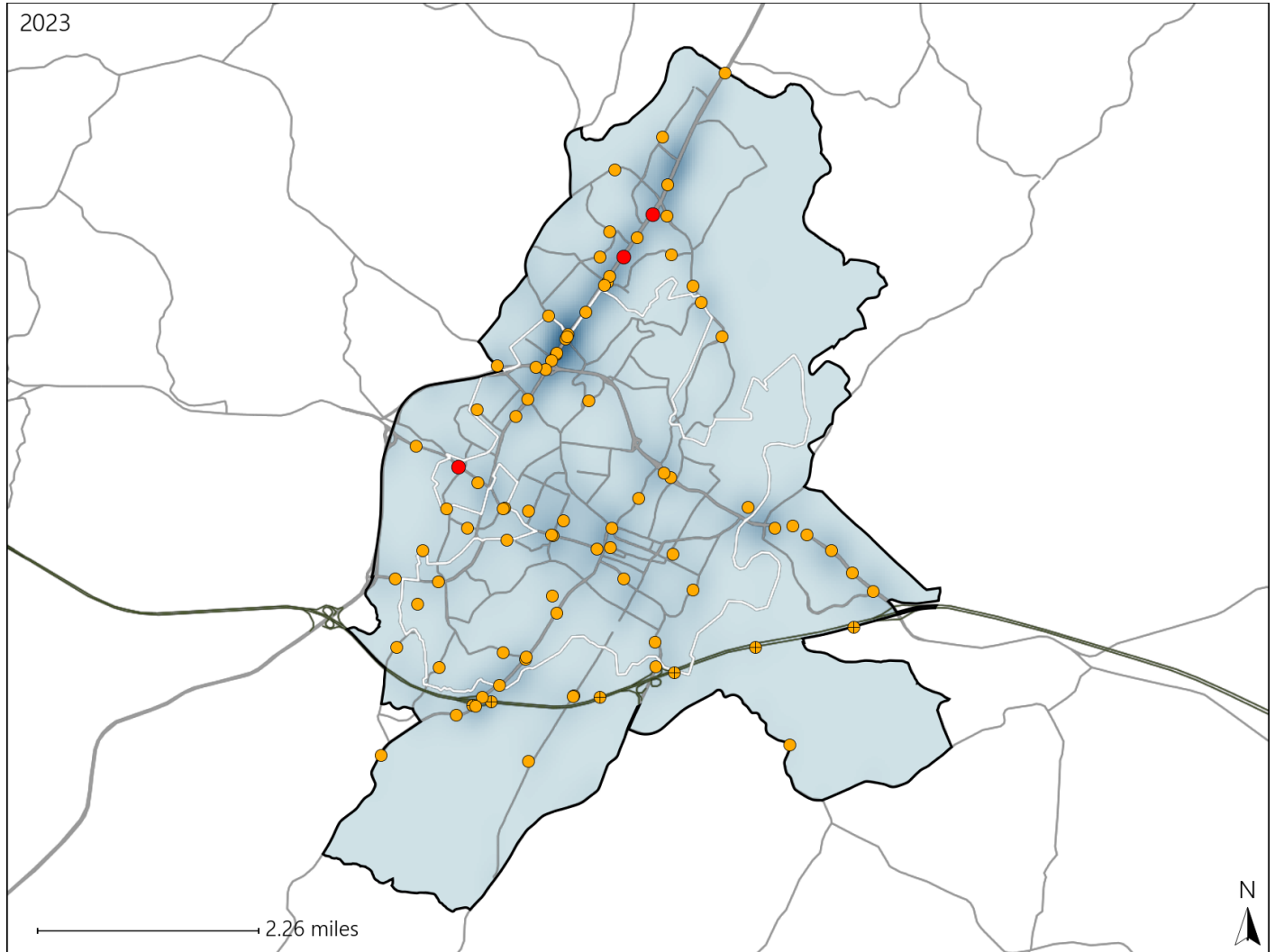


Virginia House District 54 Crash Statistics

Report Generated May, 2024

	Count	Highest Time Period(s)	Highest Day(s)	Highest Month(s)
Fatal Crashes	3	6:00pm - 8:59pm	Friday • Saturday	January
Resulting Fatalities	3	9:00pm - 11:59pm (66%)	(66%)	(67%)
Serious Injury Crashes	85	3:00pm - 5:59pm (24%)	Saturday • Tuesday (32%)	May (14%)



House District 54 Crashes

Interstate Crashes

- Fatal
- Serious Injury

Non-interstate Crashes

- Fatal
- Serious Injury

The blue gradient represents the density of all crashes.

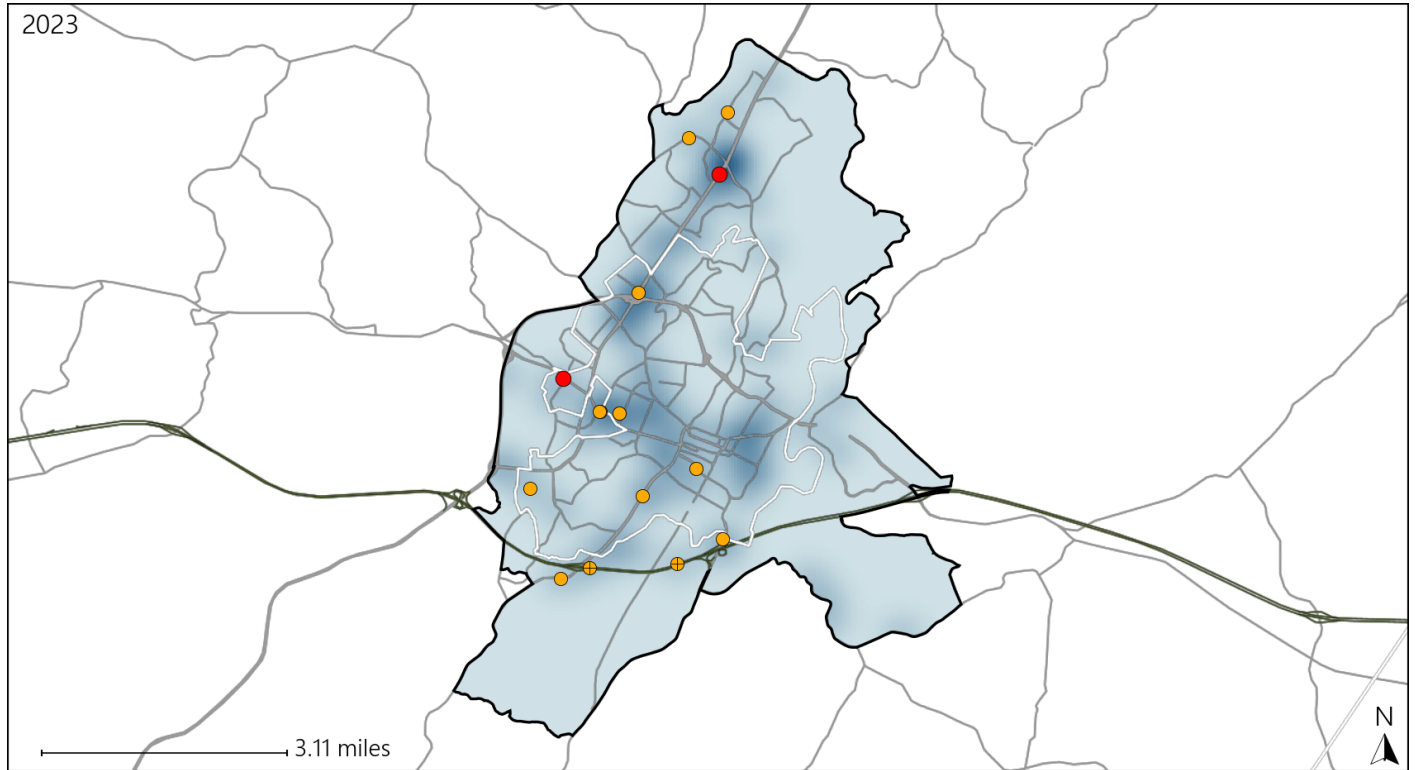


Available Crash Data - Calendar Year (CY)	CY 2020	CY 2021	CY 2022	CY 2023
Total Crashes	998	1130	1346	1285
Fatal Crashes	9	6	6	3
Injury Crashes	478	500	629	647

Virginia House District 54 Alcohol Crash Statistics

Report Generated May, 2024

	Count	Highest Time Period(s)	Highest Day(s)	Highest Month(s)
Fatal Crashes	2	6:00pm - 8:59pm	Friday - Thursday	January
Resulting Fatalities	2	9:00pm - 11:59pm (100%)	(100%)	(100%)
Serious Injury Crashes	13	Midnight - 2:59am (46%)	Sunday (31%)	April - September (46%)



House District 54 Alcohol-Related Crashes

Interstate Crashes Non-interstate Crashes
 ● Fatal ● Fatal
 ● Serious Injury ● Serious Injury

The blue gradient represents the density of all alcohol-related crashes.

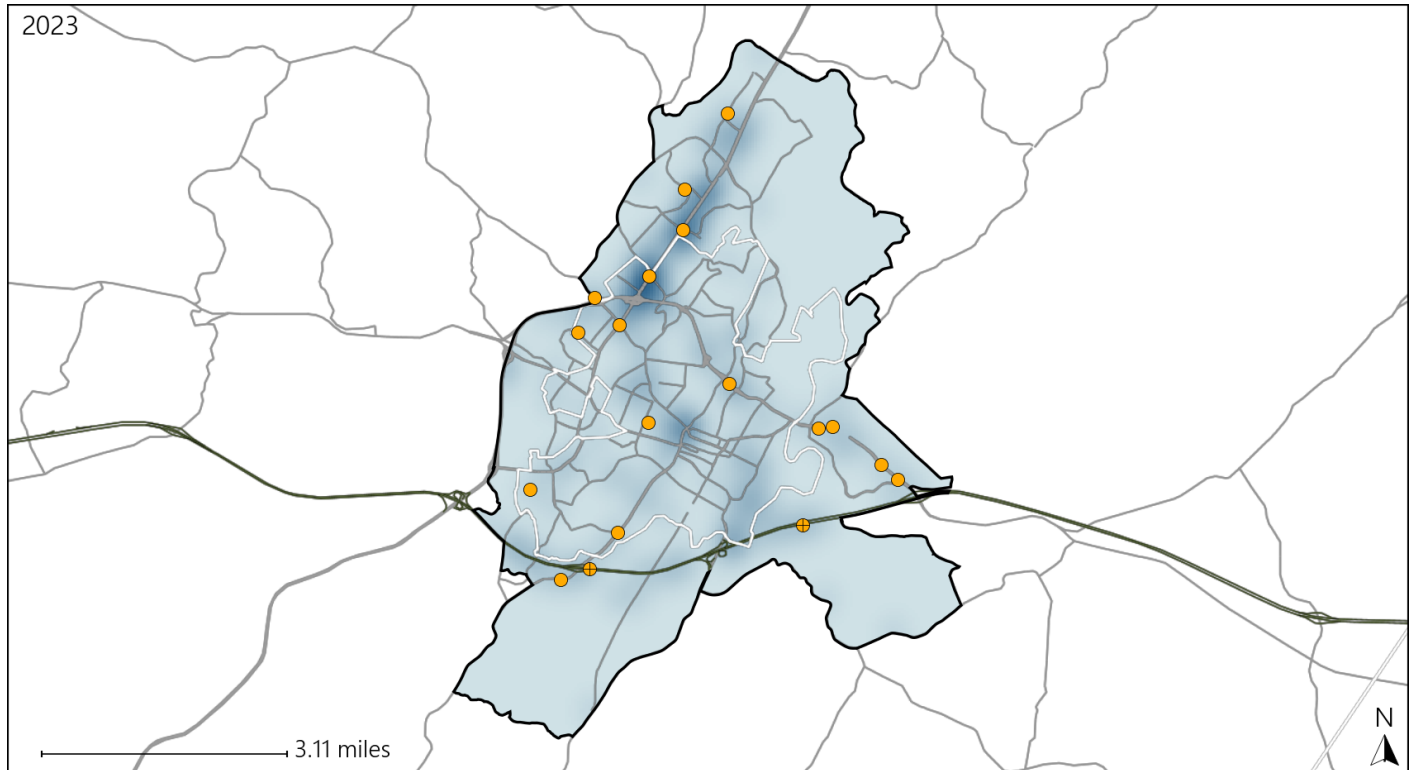


Available Crash Data - Calendar Year (CY)	CY 2020	CY 2021	CY 2022	CY 2023
Total Crashes	998	1130	1346	1285
Fatal Crashes	9	6	6	3
Injury Crashes	478	500	629	647
Alcohol-Related Fatal Crashes	3	3	2	2
Percent of Alcohol-Related Fatal Crashes to Total Fatal Crashes	33%	50%	33%	67%
Alcohol-Related Injury Crashes	47	34	36	52
Percent of Alcohol-Related Injury Crashes to Total Injury Crashes	10%	7%	6%	8%

Virginia House District 54 Speed Crash Statistics

Report Generated May, 2024

	Count	Highest Time Period(s)	Highest Day(s)	Highest Month(s)
Fatal Crashes	0	-	-	-
Resulting Fatalities	0	-	-	-
Serious Injury Crashes	18	Midnight - 2:59am (28%)	Monday - Saturday (44%)	April (22%)



House District 54 Speed-Related Crashes

Interstate Crashes Non-interstate Crashes
 ● Fatal ● Fatal
 ⊕ Serious Injury ⊕ Serious Injury

The blue gradient represents the density of all speed-related crashes.

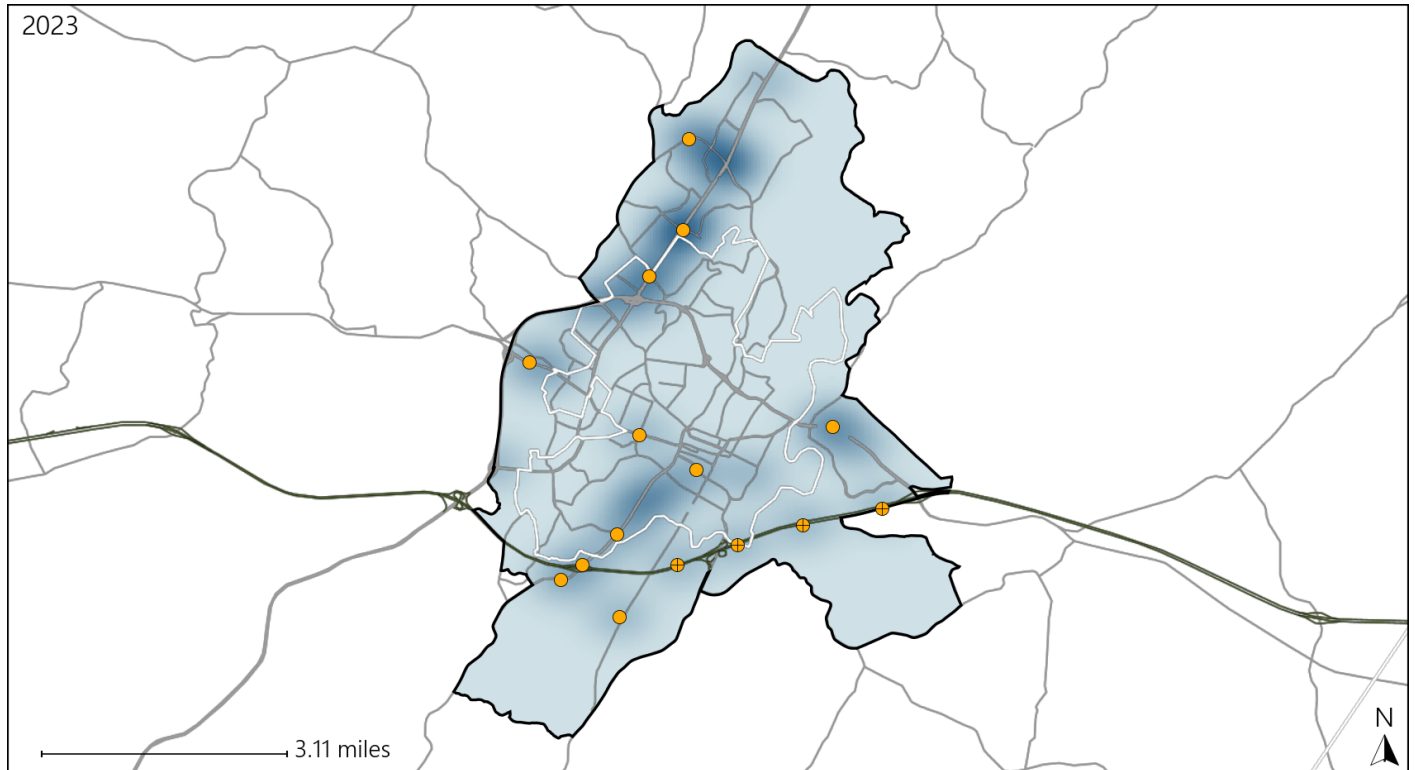


Available Crash Data - Calendar Year (CY)	CY 2020	CY 2021	CY 2022	CY 2023
Total Crashes	998	1130	1346	1285
Fatal Crashes	9	6	6	3
Injury Crashes	478	500	629	647
Speed-Related Fatal Crashes	4	1	3	0
Percent of Speed-Related Fatal Crashes to Total Fatal Crashes	44%	17%	50%	0%
Speed-Related Injury Crashes	69	61	93	88
Percent of Speed-Related Injury Crashes to Total Injury Crashes	14%	12%	15%	14%

Virginia House District 54 Unrestrained Crash Statistics

Report Generated May, 2024

	Count	Highest Time Period(s)	Highest Day(s)	Highest Month(s)
Fatal Crashes	0	-	-	-
Unrestrained Fatalities	0	-	-	-
Serious Injury Crashes	15	Midnight - 2:59am (27%)	Saturday (27%)	July • May (40%)



House District 54 Unrestrained-Related Crashes

Interstate Crashes

- Fatal
- + Serious Injury

Non-interstate Crashes

- Fatal
- + Serious Injury

The blue gradient represents the density of all unrestrained-related crashes.

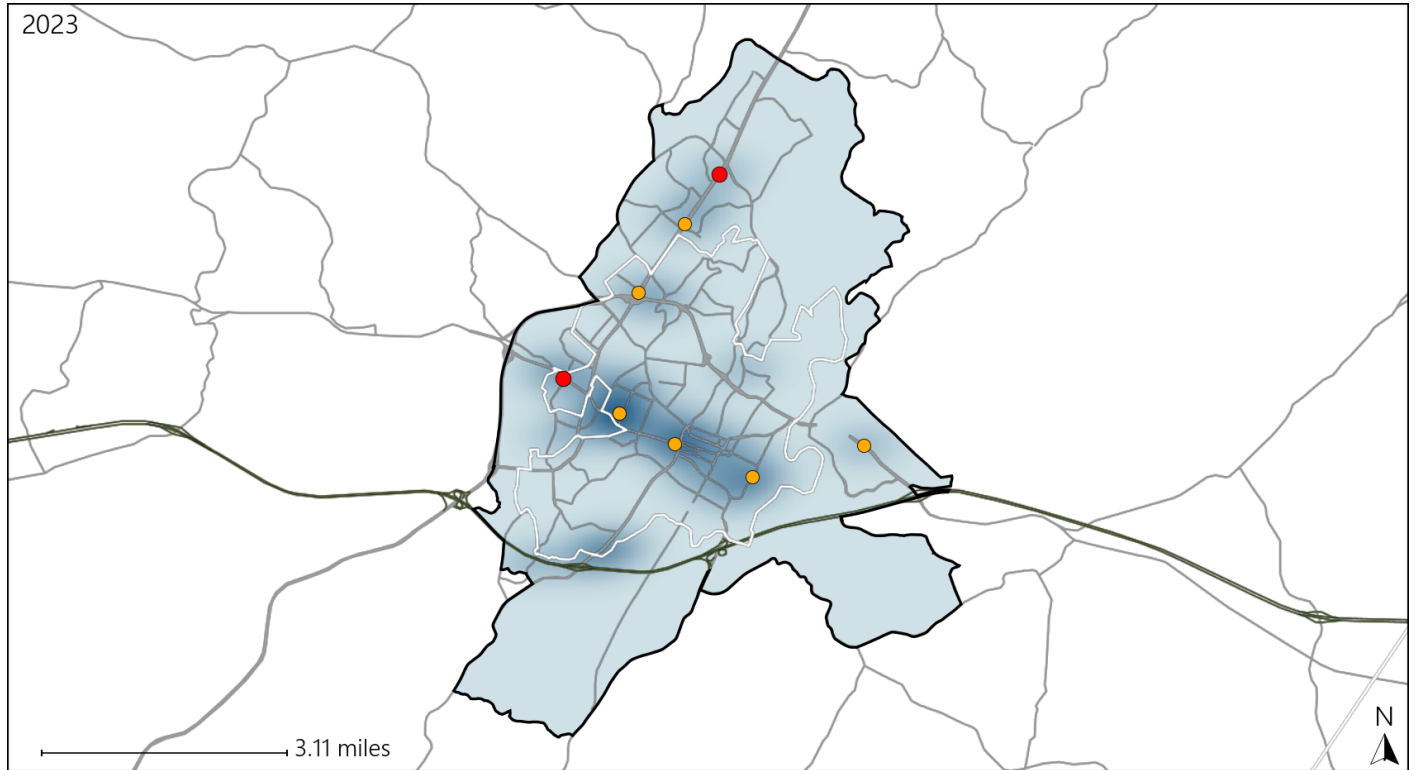


Available Crash Data - Calendar Year (CY)	CY 2020	CY 2021	CY 2022	CY 2023
Total Crashes	998	1130	1346	1285
Fatalities	10	7	6	3
Injuries	681	770	1003	995
Unrestrained Fatalities	3	3	1	0
Percent of Unrestrained Fatalities to Total Fatalities	30%	43%	17%	0%
Unrestrained Injuries	33	21	30	41
Percent of Unrestrained Injuries to Total Injuries	5%	3%	3%	4%

Virginia House District 54 Pedestrian Crash Statistics

Report Generated May, 2024

	Count	Highest Time Period(s)	Highest Day(s)	Highest Month(s)
Fatal Crashes	2	6:00pm - 8:59pm	Friday - Thursday	January
Pedestrian Fatalities	2	9:00pm - 11:59pm (100%)	(100%)	(100%)
Serious Injury Crashes	6	Noon - 2:59pm (33%)	Friday (33%)	February (33%)



House District 54 Pedestrian-Related Crashes

- | | |
|--|--|
| Interstate Crashes | Non-interstate Crashes |
| ● Fatal | ● Fatal |
| ● Serious Injury | ● Serious Injury |

The blue gradient represents the density of all pedestrian-related crashes.

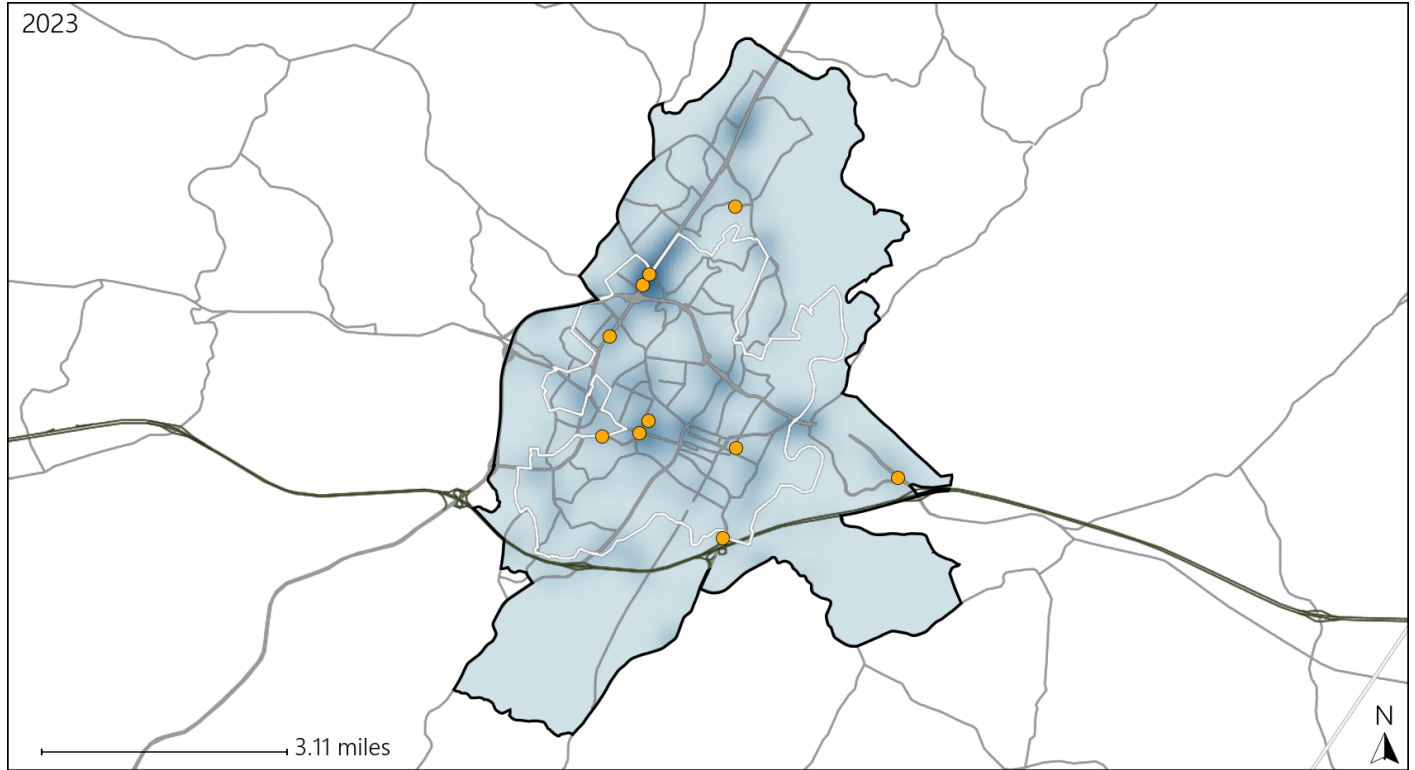


Available Crash Data - Calendar Year (CY)	CY 2020	CY 2021	CY 2022	CY 2023
Total Crashes	998	1130	1346	1285
Fatal Crashes	9	6	6	3
Injury Crashes	478	500	629	647
Pedestrian-Related Fatal Crashes	3	2	1	2
Percent of Pedestrian-Related Fatal Crashes to Total Fatal Crashes	33%	33%	17%	67%
Pedestrian-Related Injury Crashes	21	17	27	27
Percent of Pedestrian-Related Injury Crashes to Total Injury Crashes	4%	3%	4%	4%

Virginia House District 54 Distracted Driving Crash Statistics

Report Generated May, 2024

	Count	Highest Time Period(s)	Highest Day(s)	Highest Month(s)
Fatal Crashes	0	-	-	-
Resulting Fatalities	0	-	-	-
Serious Injury Crashes	10	3:00pm - 5:59pm (30%)	Monday • Sunday (40%)	February • May (40%)



House District 54 Distracted Driving-Related Crashes

- | | |
|--|--|
| Interstate Crashes | Non-interstate Crashes |
| ● Fatal | ● Fatal |
| ● Serious Injury | ● Serious Injury |

The blue gradient represents the density of all distracted driving-related crashes.



Available Crash Data - Calendar Year (CY)	CY 2020	CY 2021	CY 2022	CY 2023
Total Crashes	998	1130	1346	1285
Fatal Crashes	9	6	6	3
Injury Crashes	478	500	629	647
Distracted Driving-Related Fatal Crashes	3	1	3	0
Percent of Distracted Driving-Related Fatal Crashes to Total Fatal Crashes	33%	17%	50%	0%
Distracted Driving-Related Injury Crashes	105	104	105	126
Percent of Distracted Driving-Related Injury Crashes to Total Injury Crashes	22%	21%	17%	19%