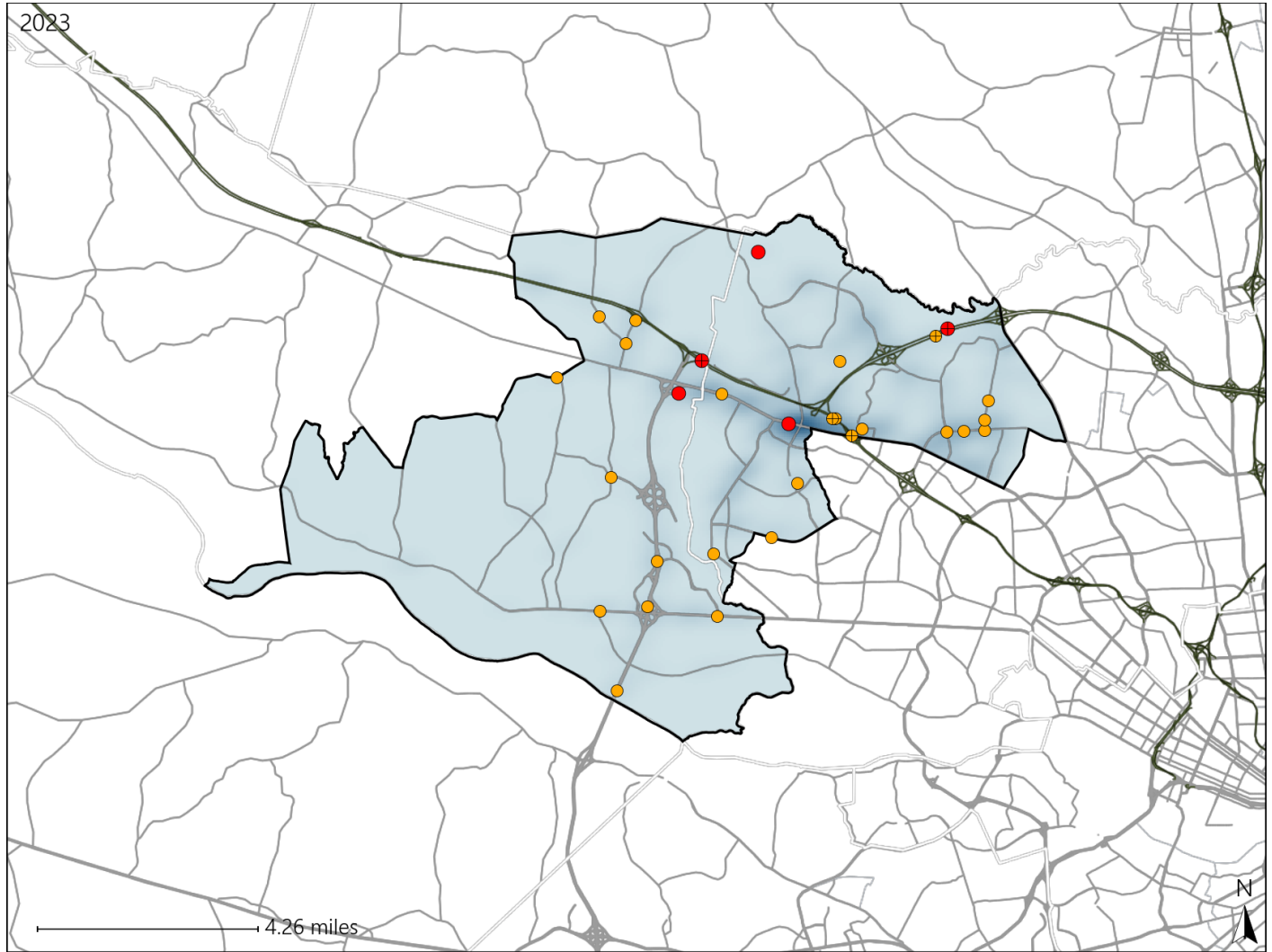


Virginia House District 57 Crash Statistics

Report Generated May, 2024

	Count	Highest Time Period(s)	Highest Day(s)	Highest Month(s)
Fatal Crashes	5	6:00am - 8:59am	Friday	June • May
Resulting Fatalities	5	9:00pm - 11:59pm (80%)	(40%)	(40%)
Serious Injury Crashes	25	3:00pm - 5:59pm (24%)	Monday • Sunday (40%)	June (16%)



House District 57 Crashes

Interstate Crashes

- Fatal
- Serious Injury

Non-interstate Crashes

- Fatal
- Serious Injury

The blue gradient represents the density of all crashes.

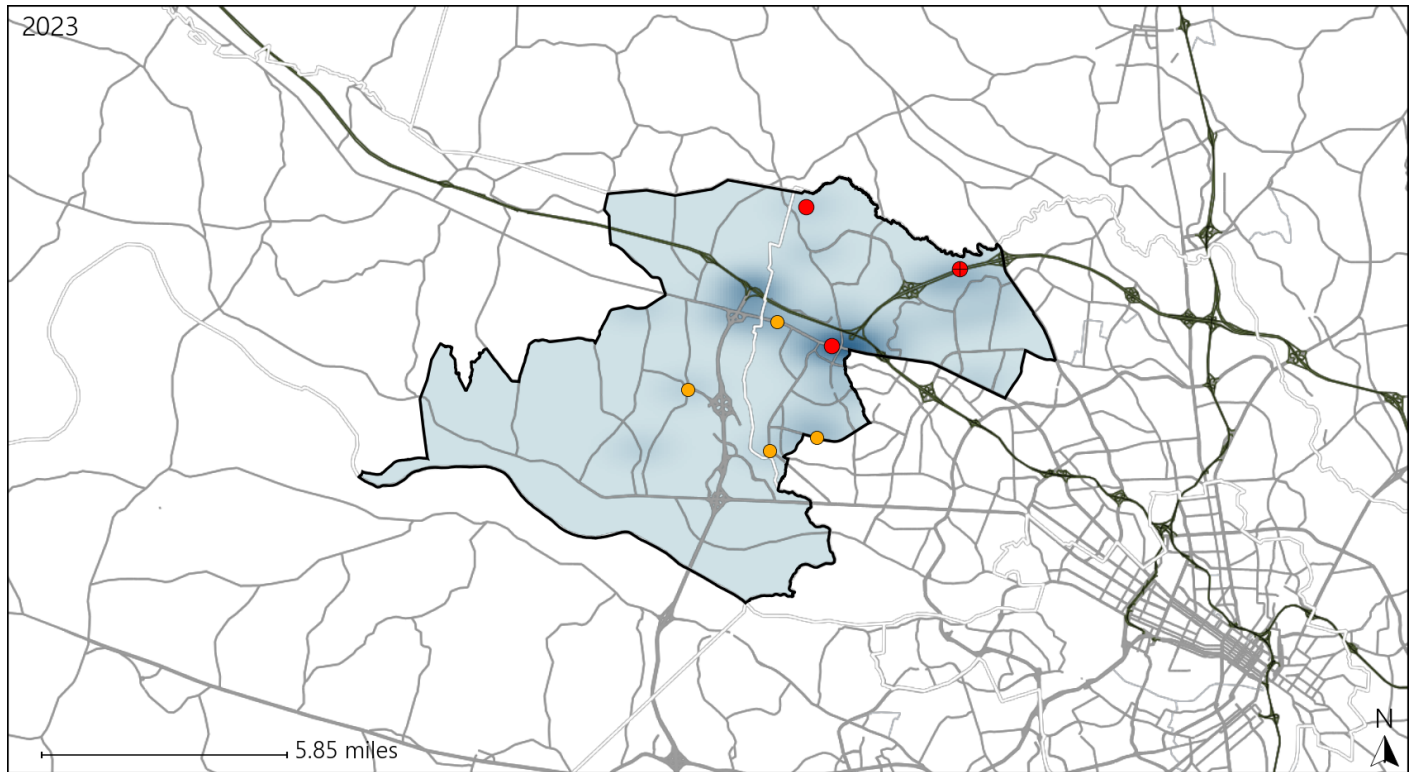


Available Crash Data - Calendar Year (CY)	CY 2020	CY 2021	CY 2022	CY 2023
Total Crashes	705	774	843	930
Fatal Crashes	1	3	4	5
Injury Crashes	187	201	239	250

Virginia House District 57 Alcohol Crash Statistics

Report Generated May, 2024

	Count	Highest Time Period(s)	Highest Day(s)	Highest Month(s)
Fatal Crashes	3	9:00pm - 11:59pm	Friday • Monday	May • October
Resulting Fatalities	3	(67%)	(66%)	(66%)
Serious Injury Crashes	4	3:00pm - 5:59pm 9:00am - 11:59am	Thursday	August • February
		(50%)	(50%)	(50%)



House District 57 Alcohol-Related Crashes

Interstate Crashes

Non-interstate Crashes

● Fatal

● Fatal

⊕ Serious Injury

⊕ Serious Injury

The blue gradient represents the density of all alcohol-related crashes.

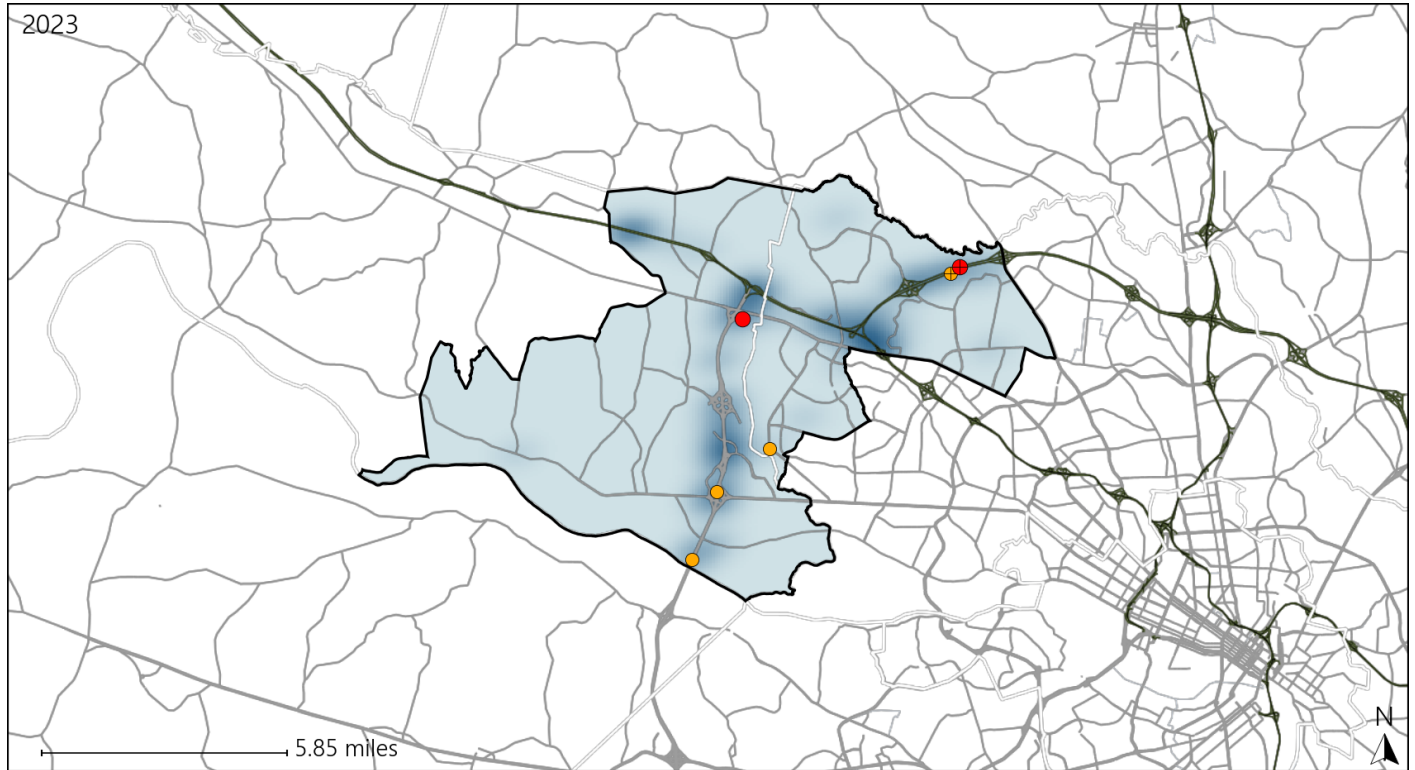


Available Crash Data - Calendar Year (CY)	CY 2020	CY 2021	CY 2022	CY 2023
Total Crashes	705	774	843	930
Fatal Crashes	1	3	4	5
Injury Crashes	187	201	239	250
Alcohol-Related Fatal Crashes	0	0	2	3
Percent of Alcohol-Related Fatal Crashes to Total Fatal Crashes	0%	0%	50%	60%
Alcohol-Related Injury Crashes	11	11	13	16
Percent of Alcohol-Related Injury Crashes to Total Injury Crashes	6%	5%	5%	6%

Virginia House District 57 Speed Crash Statistics

Report Generated May, 2024

	Count	Highest Time Period(s)	Highest Day(s)	Highest Month(s)
Fatal Crashes	2	6:00am - 8:59am	Friday • Wednesday	June • October
Resulting Fatalities	2	9:00pm - 11:59pm (100%)	(100%)	(100%)
Serious Injury Crashes	4	Midnight - 2:59am (50%)	Friday • Monday (50%)	November (50%)



House District 57 Speed-Related Crashes

Interstate Crashes Non-interstate Crashes
 ● Fatal ● Fatal
 ● Serious Injury ● Serious Injury

The blue gradient represents the density of all speed-related crashes.

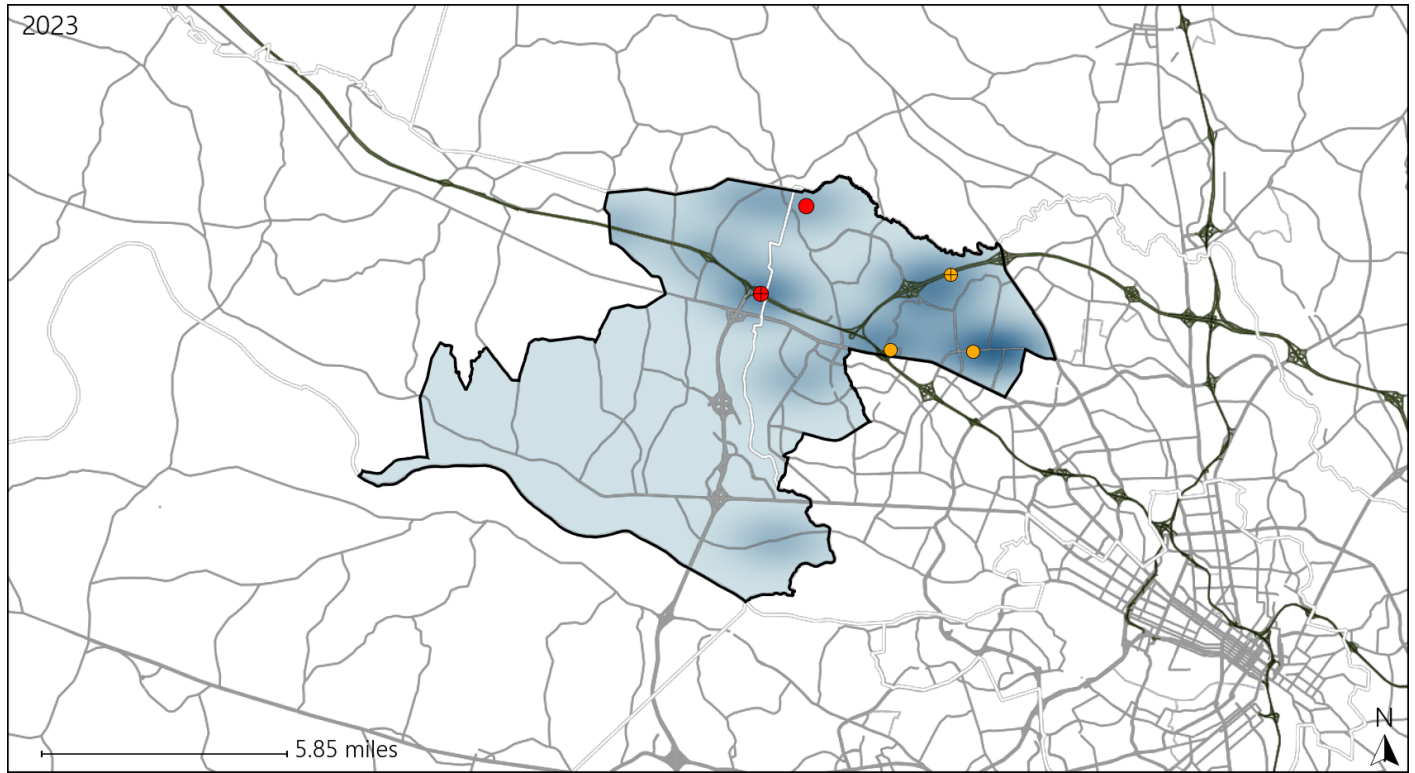


Available Crash Data - Calendar Year (CY)	CY 2020	CY 2021	CY 2022	CY 2023
Total Crashes	705	774	843	930
Fatal Crashes	1	3	4	5
Injury Crashes	187	201	239	250
Speed-Related Fatal Crashes	1	0	2	2
Percent of Speed-Related Fatal Crashes to Total Fatal Crashes	100%	0%	50%	40%
Speed-Related Injury Crashes	16	19	32	24
Percent of Speed-Related Injury Crashes to Total Injury Crashes	9%	9%	13%	10%

Virginia House District 57 Unrestrained Crash Statistics

Report Generated May, 2024

	Count	Highest Time Period(s)	Highest Day(s)	Highest Month(s)
Fatal Crashes	2	6:00am - 8:59am	Friday • Thursday	May • November
Unrestrained Fatalities	2	Noon - 2:59pm (100%)	(100%)	(100%)
Serious Injury Crashes	3	6:00pm - 8:59pm 9:00pm - 11:59pm (66%)	Friday • Monday (66%)	July • March (66%)



House District 57 Unrestrained-Related Crashes

- | | |
|--------------------|------------------------|
| Interstate Crashes | Non-interstate Crashes |
| ● Fatal | ● Fatal |
| ⊕ Serious Injury | ⊕ Serious Injury |

The blue gradient represents the density of all unrestrained-related crashes.

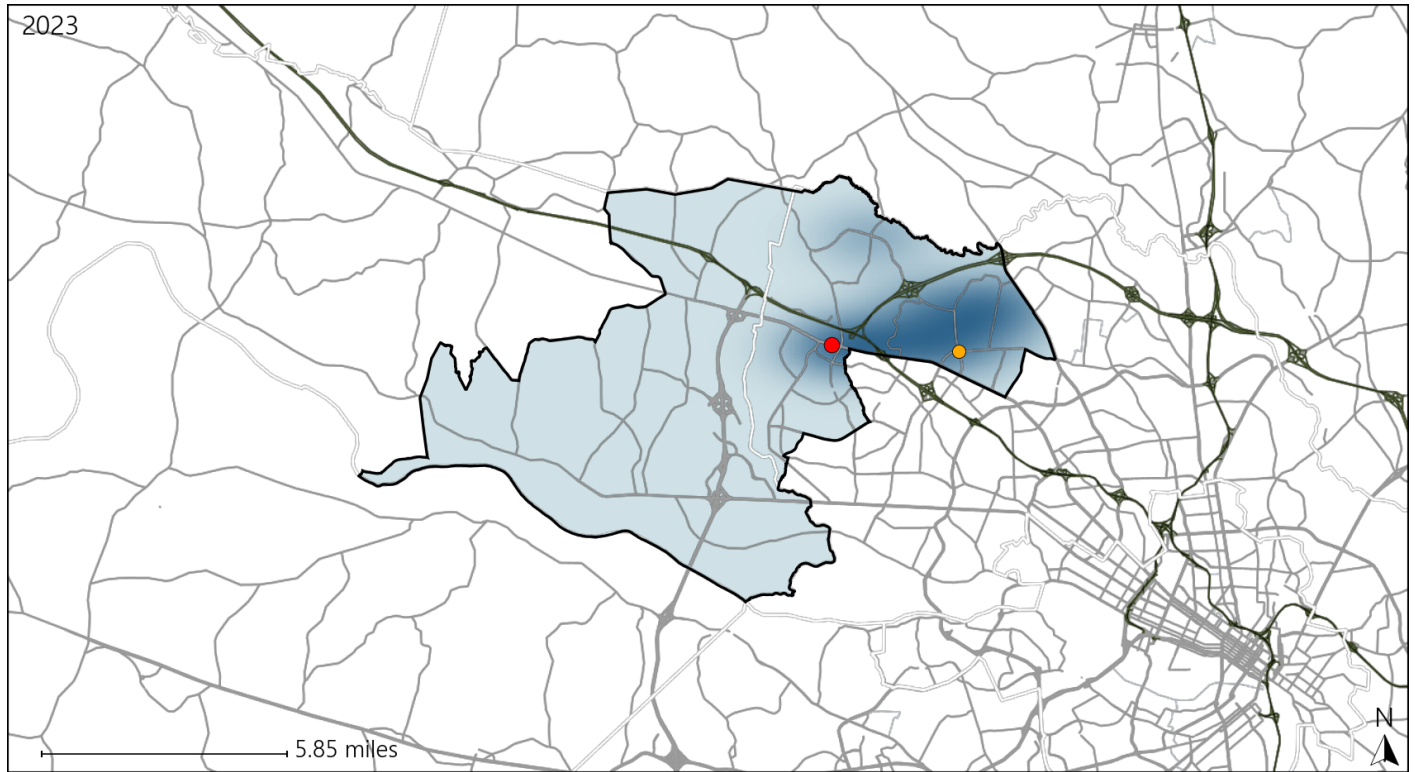


Available Crash Data - Calendar Year (CY)	CY 2020	CY 2021	CY 2022	CY 2023
Total Crashes	705	774	843	930
Fatalities	1	3	4	5
Injuries	310	347	385	421
Unrestrained Fatalities	0	0	2	2
Percent of Unrestrained Fatalities to Total Fatalities	0%	0%	50%	40%
Unrestrained Injuries	5	15	23	16
Percent of Unrestrained Injuries to Total Injuries	2%	4%	6%	4%

Virginia House District 57 Pedestrian Crash Statistics

Report Generated May, 2024

	Count	Highest Time Period(s)	Highest Day(s)	Highest Month(s)
Fatal Crashes	1	9:00pm - 11:59pm	Monday	September
Pedestrian Fatalities	1	(100%)	(100%)	(100%)
Serious Injury Crashes	1	9:00am - 11:59am	Tuesday	January
		(100%)	(100%)	(100%)




House District 57 Pedestrian-Related Crashes


Interstate Crashes

Non-interstate Crashes

 Fatal

 Fatal

 Serious Injury

 Serious Injury

The blue gradient represents the density of all pedestrian-related crashes.

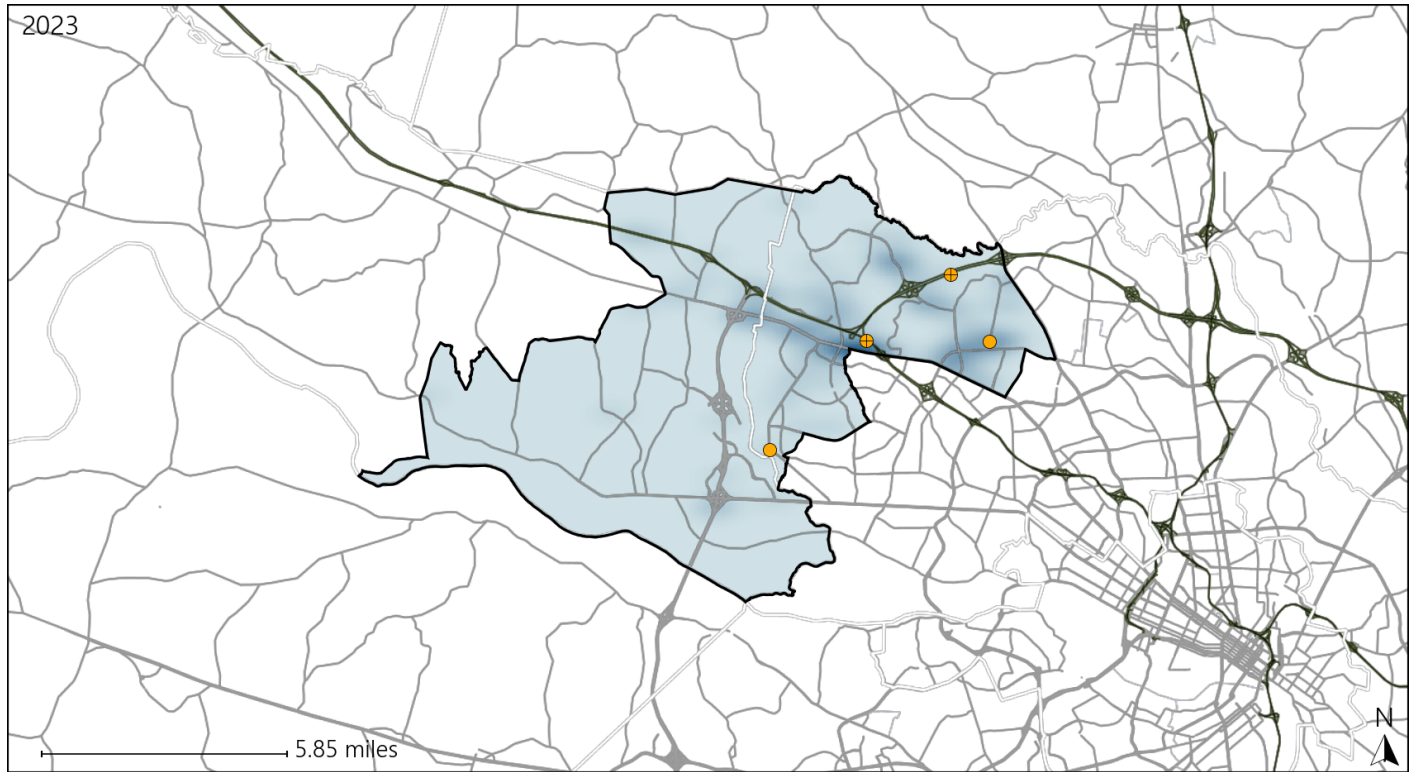


Available Crash Data - Calendar Year (CY)	CY 2020	CY 2021	CY 2022	CY 2023
Total Crashes	705	774	843	930
Fatal Crashes	1	3	4	5
Injury Crashes	187	201	239	250
Pedestrian-Related Fatal Crashes	0	2	1	1
Percent of Pedestrian-Related Fatal Crashes to Total Fatal Crashes	0%	67%	25%	20%
Pedestrian-Related Injury Crashes	8	4	7	7
Percent of Pedestrian-Related Injury Crashes to Total Injury Crashes	4%	2%	3%	3%

Virginia House District 57 Distracted Driving Crash Statistics

Report Generated May, 2024

	Count	Highest Time Period(s)	Highest Day(s)	Highest Month(s)
Fatal Crashes	0	-	-	-
Resulting Fatalities	0	-	-	-
Serious Injury Crashes	4	Midnight - 2:59am (75%)	Friday • Monday (50%)	November (50%)



House District 57 Distracted Driving-Related Crashes

- | | |
|--|--|
| Interstate Crashes | Non-interstate Crashes |
| ● Fatal | ● Fatal |
| ⊕ Serious Injury | ⊕ Serious Injury |

The blue gradient represents the density of all distracted driving-related crashes.



Available Crash Data - Calendar Year (CY)	CY 2020	CY 2021	CY 2022	CY 2023
Total Crashes	705	774	843	930
Fatal Crashes	1	3	4	5
Injury Crashes	187	201	239	250
Distracted Driving-Related Fatal Crashes	0	1	0	0
Percent of Distracted Driving-Related Fatal Crashes to Total Fatal Crashes	0%	33%	0%	0%
Distracted Driving-Related Injury Crashes	37	35	37	31
Percent of Distracted Driving-Related Injury Crashes to Total Injury Crashes	20%	17%	15%	12%