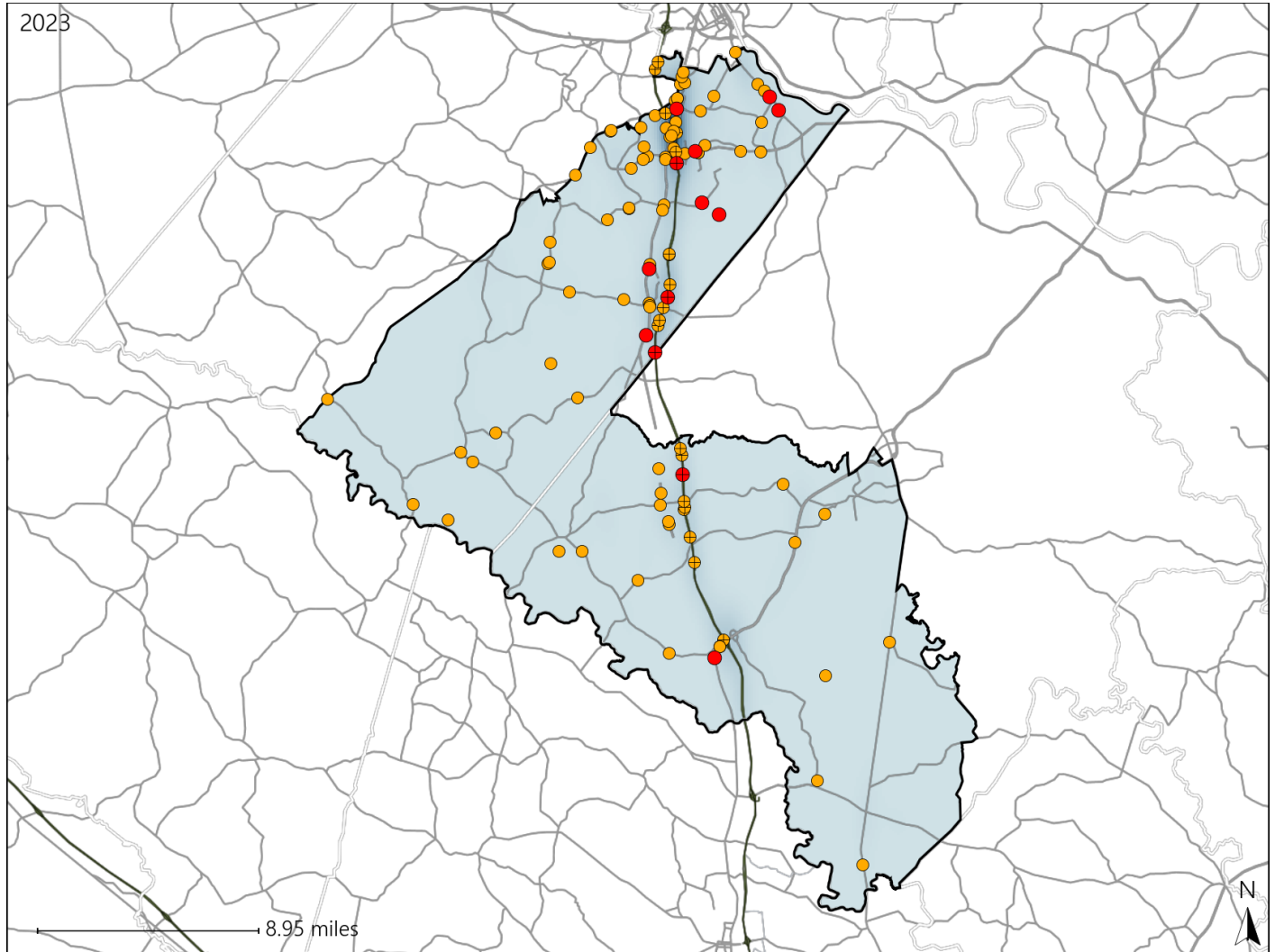


# Virginia House District 66 Crash Statistics

Report Generated May, 2024

	Count	Highest Time Period(s)	Highest Day(s)	Highest Month(s)
<b>Fatal Crashes</b>	<b>13</b>	6:00am - 8:59am	Friday • Sunday	February
<b>Resulting Fatalities</b>	<b>13</b>	6:00pm - 8:59pm (46%)	(46%)	(31%)
<b>Serious Injury Crashes</b>	<b>98</b>	Noon - 2:59pm (21%)	Wednesday (22%)	July • June (26%)



### House District 66 Crashes

Interstate Crashes

- Fatal
- Serious Injury

Non-interstate Crashes

- Fatal
- Serious Injury

The blue gradient represents the density of all crashes.

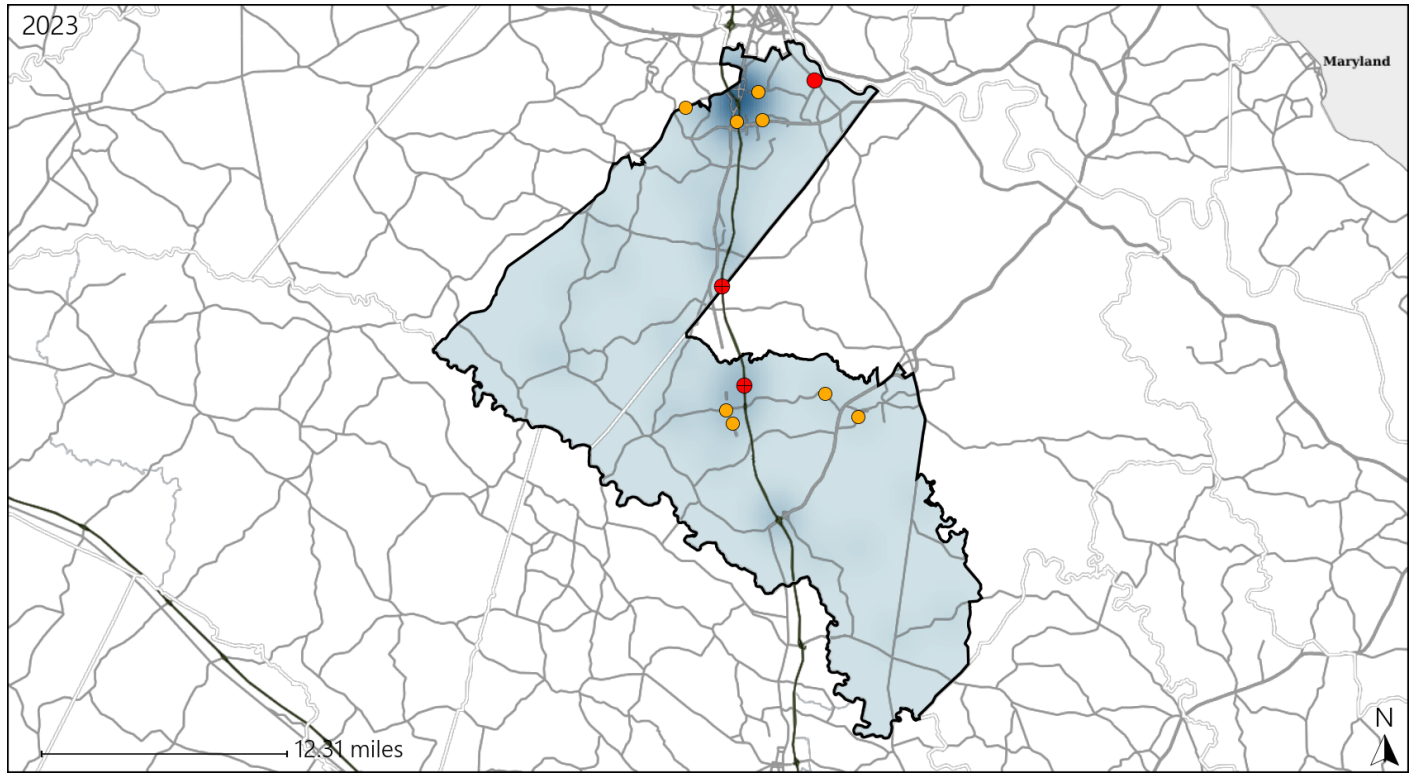


Available Crash Data - Calendar Year (CY)	CY 2020	CY 2021	CY 2022	CY 2023
Total Crashes	1373	1618	1777	1849
Fatal Crashes	8	11	17	13
Injury Crashes	356	385	385	437

# Virginia House District 66 Alcohol Crash Statistics

Report Generated May, 2024

	Count	Highest Time Period(s)	Highest Day(s)	Highest Month(s)
<b>Fatal Crashes</b>	<b>3</b>	6:00pm - 8:59pm	Sunday	February
<b>Resulting Fatalities</b>	<b>3</b>	9:00pm - 11:59pm (66%)	(67%)	(67%)
<b>Serious Injury Crashes</b>	<b>8</b>	9:00am - 11:59am 9:00pm - 11:59pm (50%)	Saturday (38%)	August (38%)



### House District 66 Alcohol-Related Crashes

Interstate Crashes                      Non-interstate Crashes  
 ● Fatal                                      ● Fatal  
 ⊕ Serious Injury                          ⊕ Serious Injury

The blue gradient represents the density of all alcohol-related crashes.

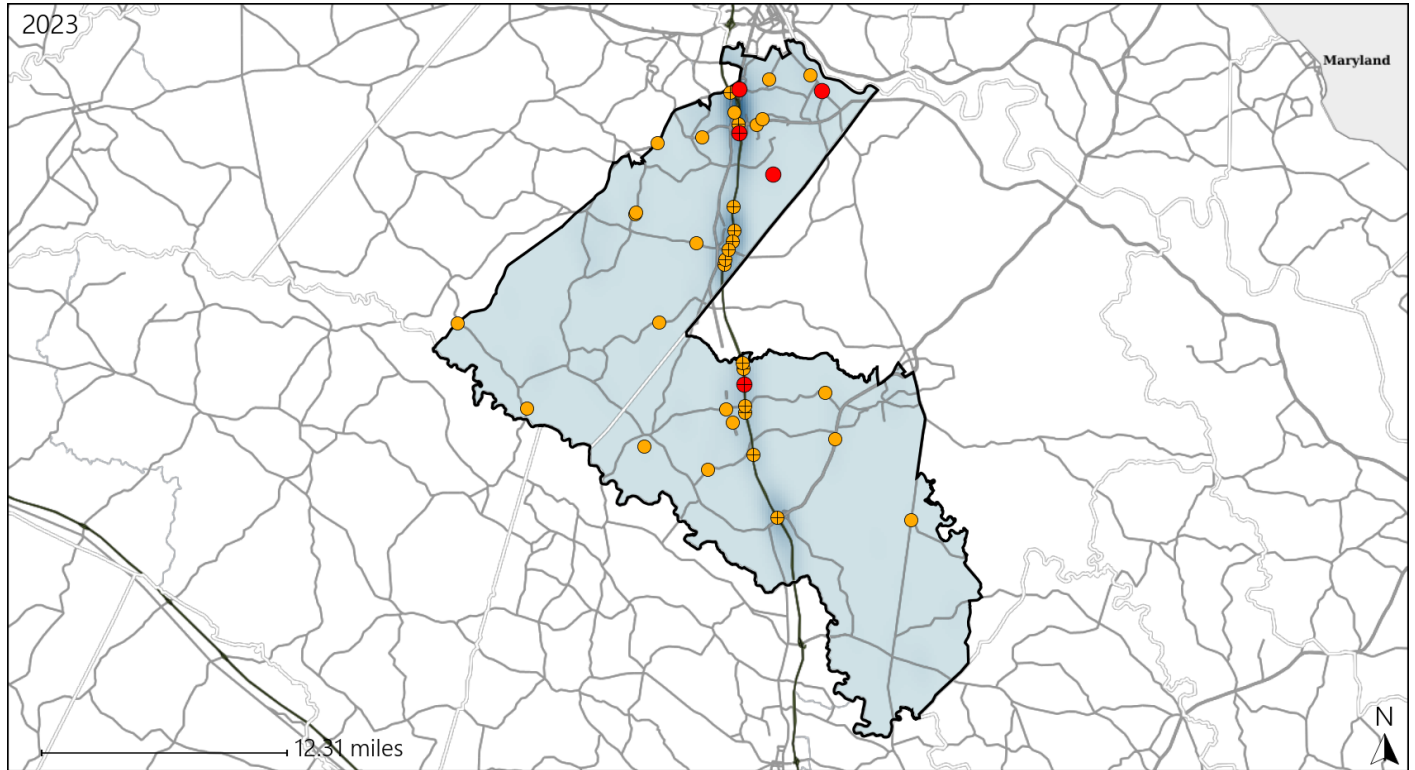


Available Crash Data - Calendar Year (CY)	CY 2020	CY 2021	CY 2022	CY 2023
Total Crashes	1373	1618	1777	1849
Fatal Crashes	8	11	17	13
Injury Crashes	356	385	385	437
Alcohol-Related Fatal Crashes	1	3	6	3
Percent of Alcohol-Related Fatal Crashes to Total Fatal Crashes	13%	27%	35%	23%
Alcohol-Related Injury Crashes	26	22	30	27
Percent of Alcohol-Related Injury Crashes to Total Injury Crashes	7%	6%	8%	6%

# Virginia House District 66 Speed Crash Statistics

Report Generated May, 2024

	Count	Highest Time Period(s)	Highest Day(s)	Highest Month(s)
<b>Fatal Crashes</b>	<b>5</b>	<b>3:00am - 5:59am</b>	<b>Friday • Sunday</b>	<b>December • February</b>
<b>Resulting Fatalities</b>	<b>5</b>	<b>3:00pm - 5:59pm</b> (40%)	<b>(80%)</b>	<b>(40%)</b>
<b>Serious Injury Crashes</b>	<b>34</b>	<b>Noon - 2:59pm</b> (21%)	<b>Tuesday</b> (24%)	<b>June</b> (18%)



## House District 66 Speed-Related Crashes

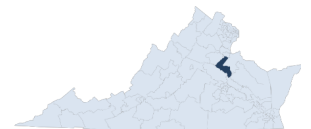
Interstate Crashes

Non-interstate Crashes

- Fatal
- Serious Injury

- Fatal
- Serious Injury

The blue gradient represents the density of all speed-related crashes.

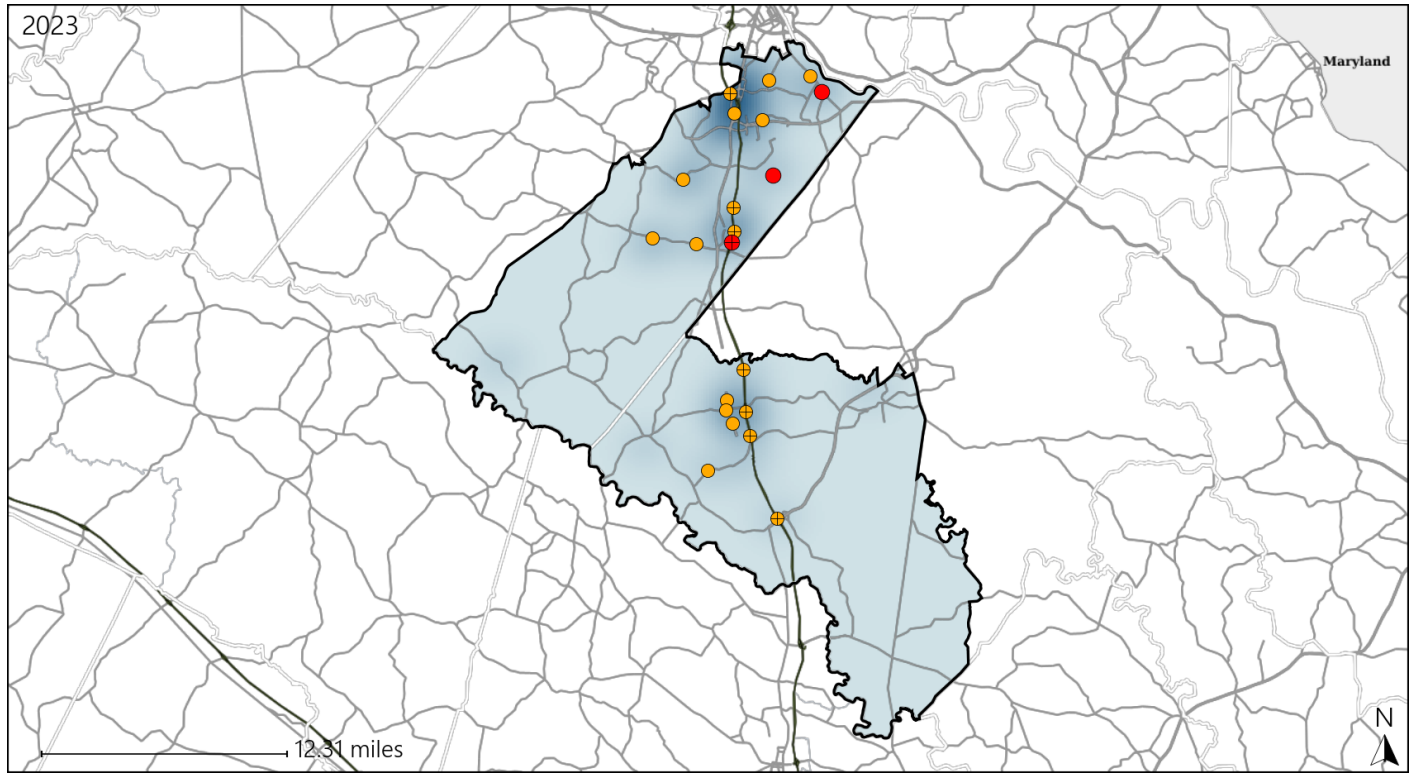


Available Crash Data - Calendar Year (CY)	CY 2020	CY 2021	CY 2022	CY 2023
Total Crashes	1373	1618	1777	1849
Fatal Crashes	8	11	17	13
Injury Crashes	356	385	385	437
Speed-Related Fatal Crashes	5	5	9	5
Percent of Speed-Related Fatal Crashes to Total Fatal Crashes	63%	45%	53%	38%
Speed-Related Injury Crashes	102	95	100	118
Percent of Speed-Related Injury Crashes to Total Injury Crashes	29%	25%	26%	27%

# Virginia House District 66 Unrestrained Crash Statistics

Report Generated May, 2024

	Count	Highest Time Period(s)	Highest Day(s)	Highest Month(s)
<b>Fatal Crashes</b>	<b>3</b>	6:00am - 8:59am	Friday • Tuesday	February • June
<b>Unrestrained Fatalities</b>	<b>3</b>	6:00pm - 8:59pm (66%)	(66%)	(66%)
<b>Serious Injury Crashes</b>	<b>18</b>	9:00pm - 11:59pm Noon - 2:59pm (44%)	Wednesday (33%)	June (22%)



### House District 66 Unrestrained-Related Crashes

- |                    |                        |
|--------------------|------------------------|
| Interstate Crashes | Non-interstate Crashes |
| ● Fatal            | ● Fatal                |
| ⊕ Serious Injury   | ⊕ Serious Injury       |

The blue gradient represents the density of all unrestrained-related crashes.

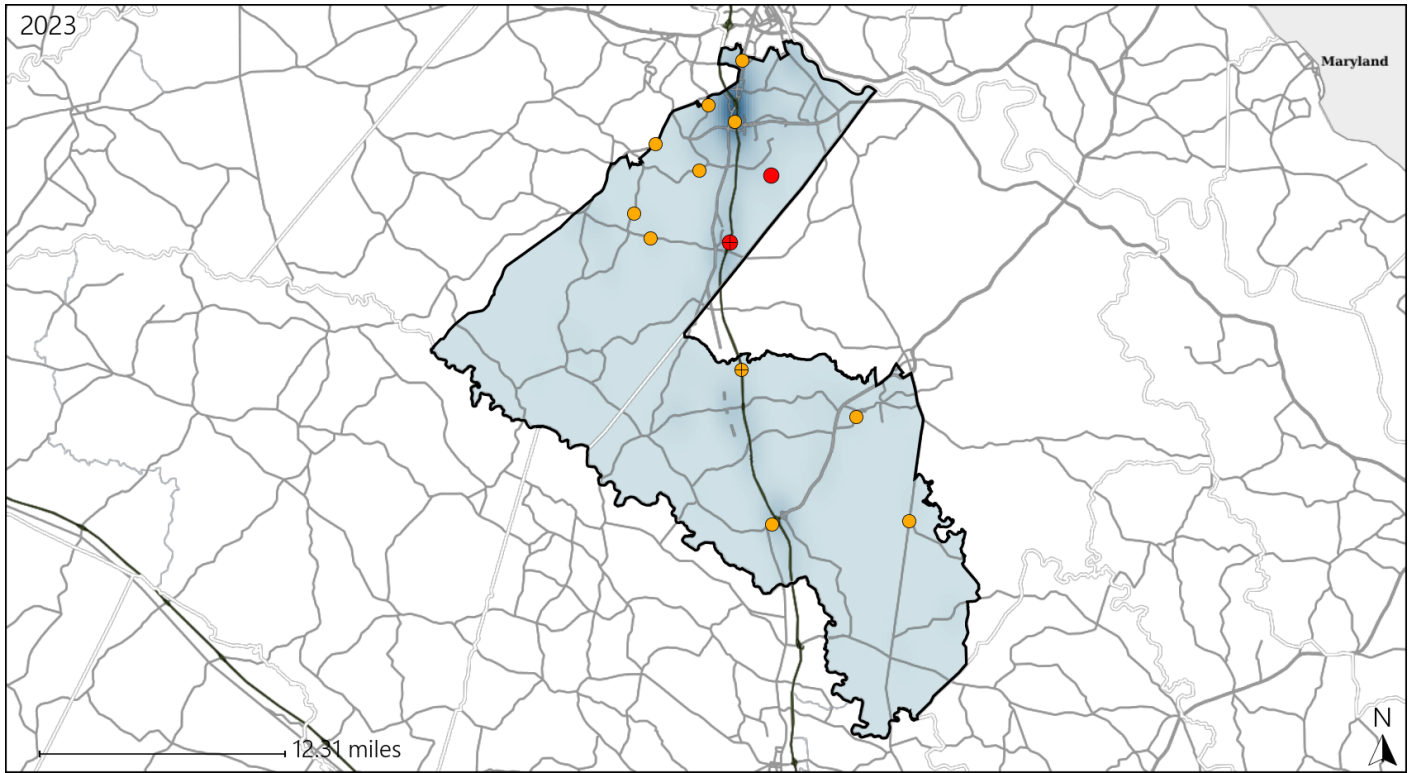


Available Crash Data - Calendar Year (CY)	CY 2020	CY 2021	CY 2022	CY 2023
Total Crashes	1373	1618	1777	1849
Fatalities	9	12	18	13
Injuries	488	653	587	689
Unrestrained Fatalities	2	3	4	3
Percent of Unrestrained Fatalities to Total Fatalities	22%	25%	22%	23%
Unrestrained Injuries	48	62	56	48
Percent of Unrestrained Injuries to Total Injuries	10%	9%	10%	7%

# Virginia House District 66 Distracted Driving Crash Statistics

Report Generated May, 2024

	Count	Highest Time Period(s)	Highest Day(s)	Highest Month(s)
<b>Fatal Crashes</b>	<b>2</b>	6:00am - 8:59am	Friday • Tuesday	February • September
<b>Resulting Fatalities</b>	<b>2</b>	9:00am - 11:59am (100%)	(100%)	(100%)
<b>Serious Injury Crashes</b>	<b>11</b>	6:00am - 8:59am Noon - 2:59pm (54%)	Monday • Thursday (36%)	August • July (36%)



## House District 66 Distracted Driving-Related Crashes

- |                    |                        |
|--------------------|------------------------|
| Interstate Crashes | Non-interstate Crashes |
| ● Fatal            | ● Fatal                |
| ⊕ Serious Injury   | ⊕ Serious Injury       |

The blue gradient represents the density of all distracted driving-related crashes.



Available Crash Data - Calendar Year (CY)	CY 2020	CY 2021	CY 2022	CY 2023
Total Crashes	1373	1618	1777	1849
Fatal Crashes	8	11	17	13
Injury Crashes	356	385	385	437
Distracted Driving-Related Fatal Crashes	1	0	3	2
Percent of Distracted Driving-Related Fatal Crashes to Total Fatal Crashes	13%	0%	18%	15%
Distracted Driving-Related Injury Crashes	70	70	59	80
Percent of Distracted Driving-Related Injury Crashes to Total Injury Crashes	20%	18%	15%	18%