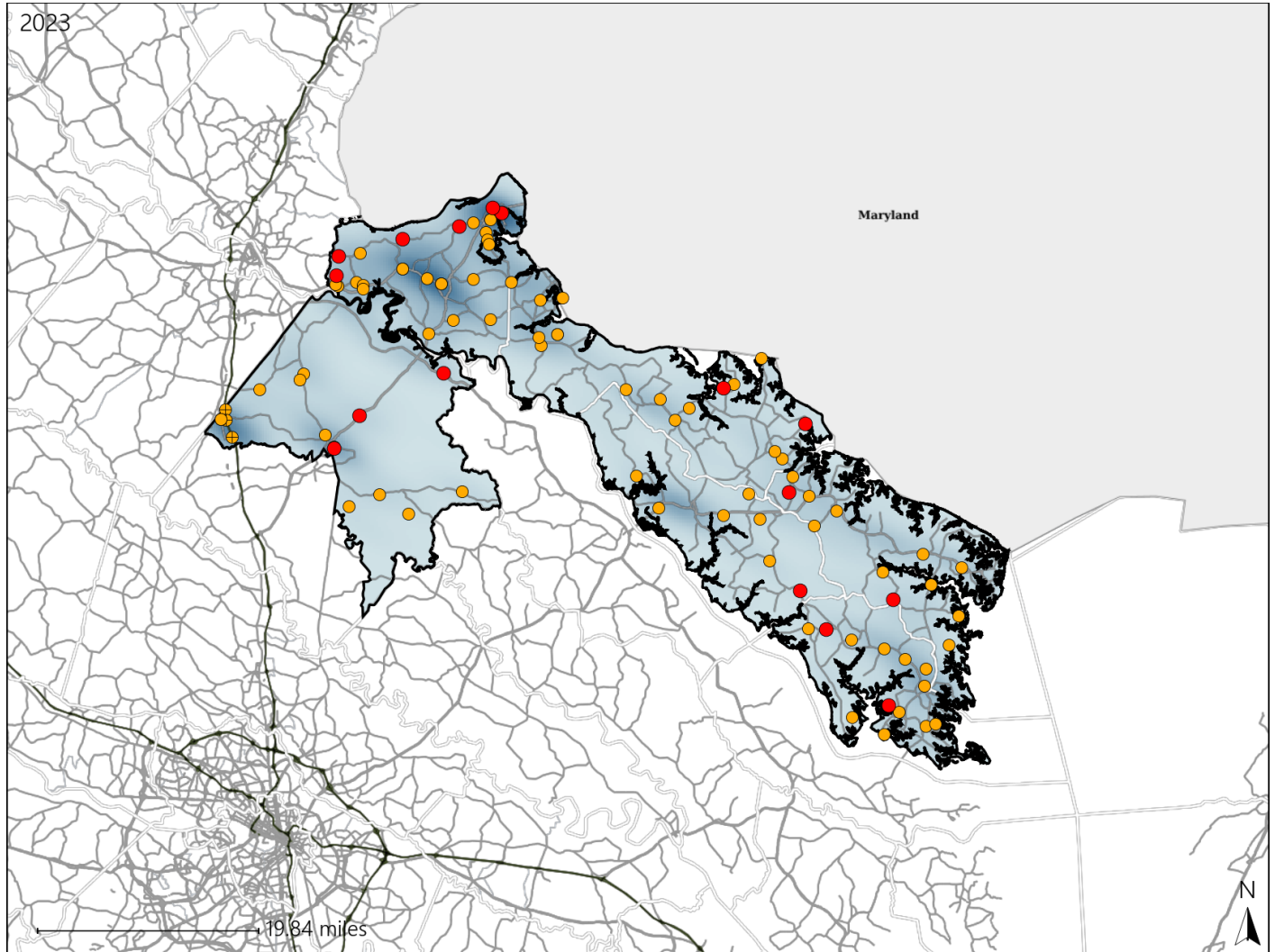


Virginia House District 67 Crash Statistics

Report Generated May, 2024

	Count	Highest Time Period(s)	Highest Day(s)	Highest Month(s)
Fatal Crashes	16	6:00pm - 8:59pm	Saturday	January
Resulting Fatalities	17	9:00pm - 11:59pm (38%)	(31%)	(31%)
Serious Injury Crashes	77	6:00pm - 8:59pm (25%)	Friday (21%)	December (19%)



House District 67 Crashes

Interstate Crashes

- Fatal
- Serious Injury

Non-interstate Crashes

- Fatal
- Serious Injury

The blue gradient represents the density of all crashes.

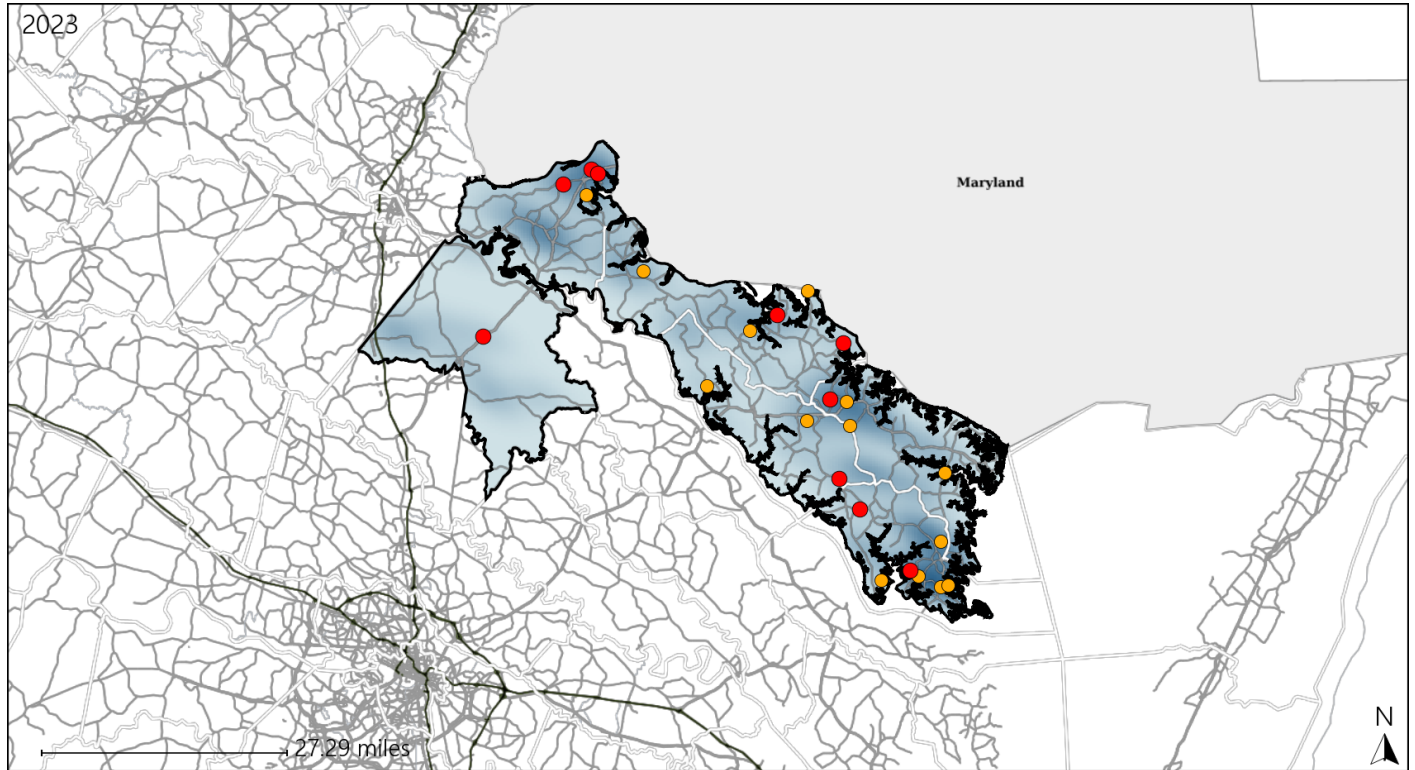


Available Crash Data - Calendar Year (CY)	CY 2020	CY 2021	CY 2022	CY 2023
Total Crashes	918	1045	1076	1113
Fatal Crashes	19	24	11	16
Injury Crashes	259	282	267	319

Virginia House District 67 Alcohol Crash Statistics

Report Generated May, 2024

	Count	Highest Time Period(s)	Highest Day(s)	Highest Month(s)
Fatal Crashes	10	3:00am - 5:59am	Saturday	January
Resulting Fatalities	10	3:00pm - 5:59pm (40%)	(30%)	(30%)
Serious Injury Crashes	14	6:00pm - 8:59pm (50%)	Saturday • Sunday (58%)	April • December (42%)



House District 67 Alcohol-Related Crashes

Interstate Crashes

Non-interstate Crashes

- Fatal
- Serious Injury

- Fatal
- Serious Injury

The blue gradient represents the density of all alcohol-related crashes.

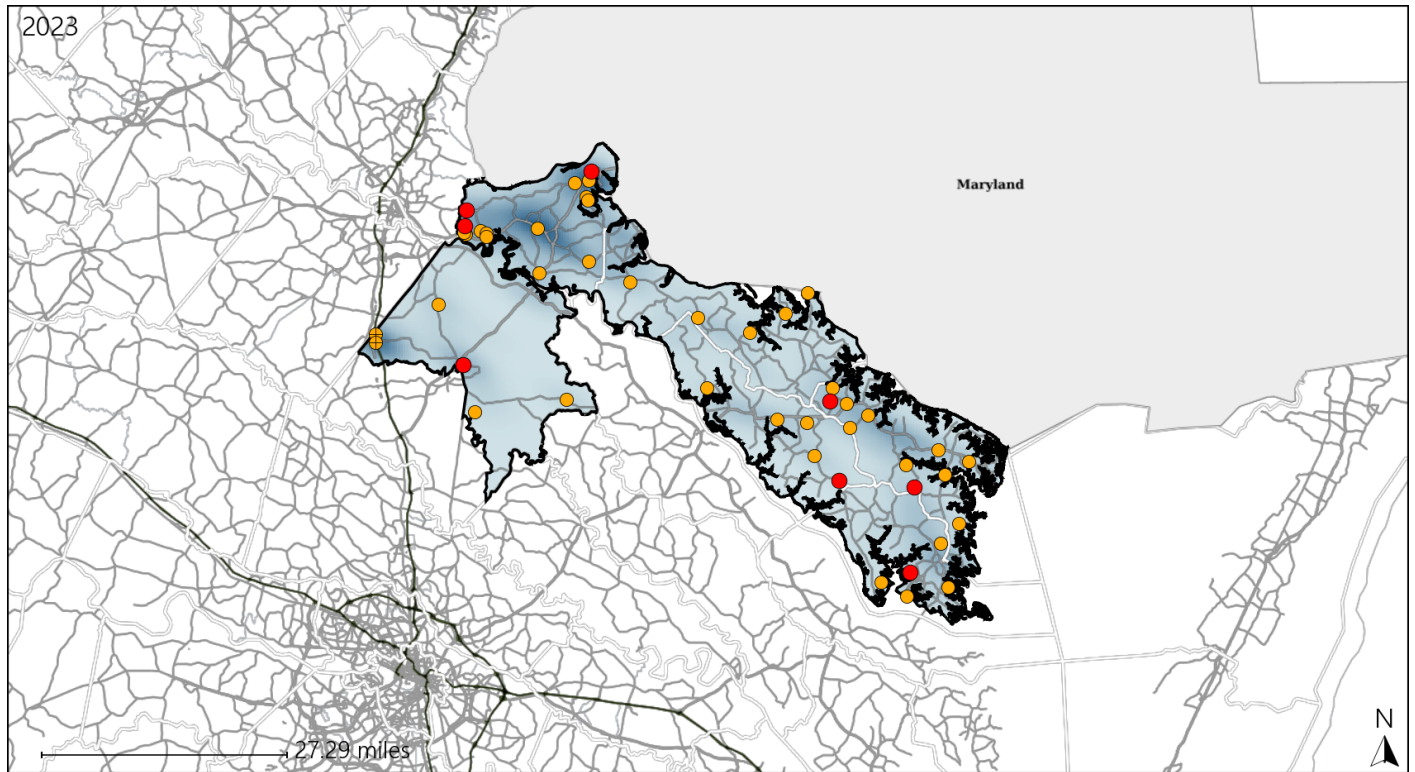


Available Crash Data - Calendar Year (CY)	CY 2020	CY 2021	CY 2022	CY 2023
Total Crashes	918	1045	1076	1113
Fatal Crashes	19	24	11	16
Injury Crashes	259	282	267	319
Alcohol-Related Fatal Crashes	6	11	2	10
Percent of Alcohol-Related Fatal Crashes to Total Fatal Crashes	32%	46%	18%	63%
Alcohol-Related Injury Crashes	40	40	31	30
Percent of Alcohol-Related Injury Crashes to Total Injury Crashes	15%	14%	12%	9%

Virginia House District 67 Speed Crash Statistics

Report Generated May, 2024

	Count	Highest Time Period(s)	Highest Day(s)	Highest Month(s)
Fatal Crashes	8	9:00pm - 11:59pm	Friday • Saturday	February • January
Resulting Fatalities	9	(38%)	(50%)	(50%)
Serious Injury Crashes	40	3:00pm - 5:59pm 6:00pm - 8:59pm	Saturday	December
		(44%)	(22%)	(28%)



House District 67 Speed-Related Crashes

Interstate Crashes

Non-interstate Crashes

- Fatal
- ⊕ Serious Injury

- Fatal
- Serious Injury

The blue gradient represents the density of all speed-related crashes.

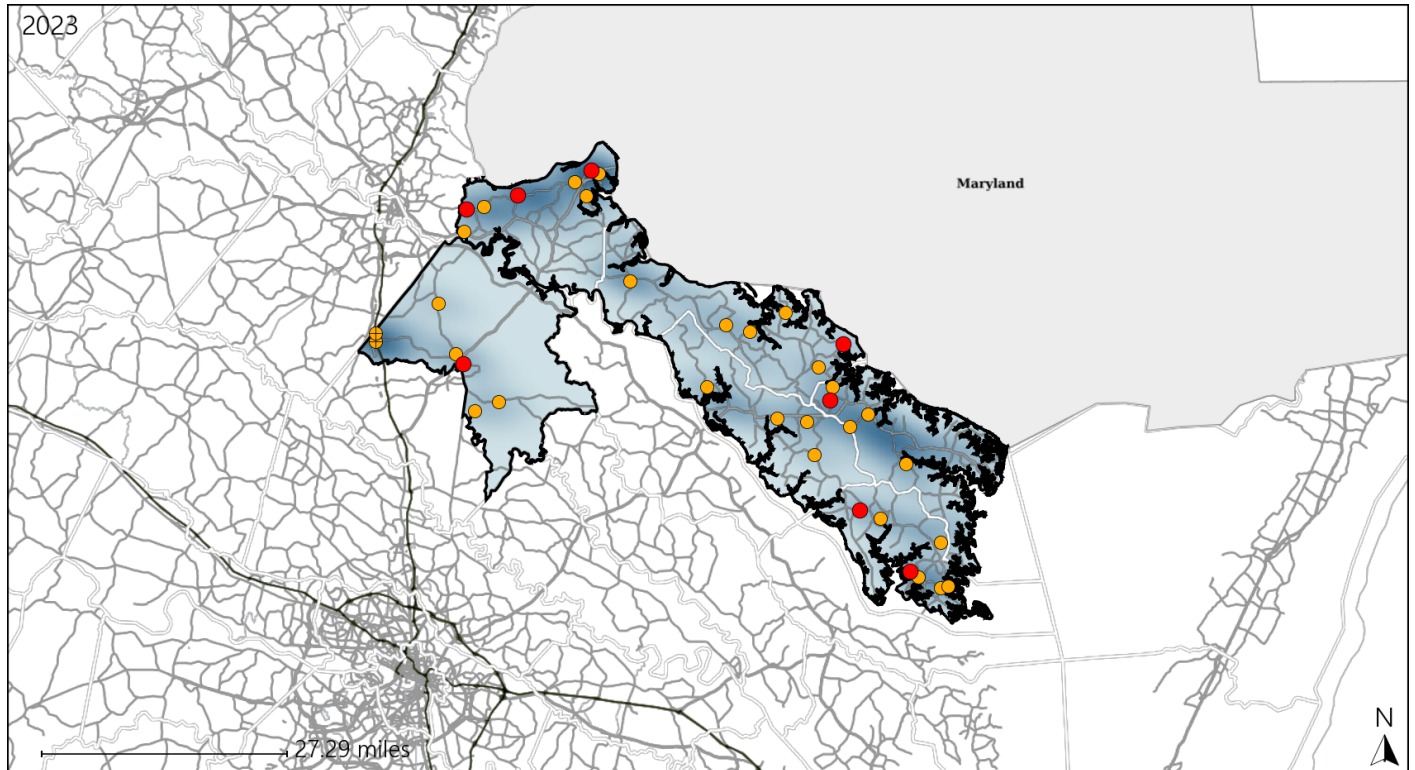


Available Crash Data - Calendar Year (CY)	CY 2020	CY 2021	CY 2022	CY 2023
Total Crashes	918	1045	1076	1113
Fatal Crashes	19	24	11	16
Injury Crashes	259	282	267	319
Speed-Related Fatal Crashes	11	19	5	8
Percent of Speed-Related Fatal Crashes to Total Fatal Crashes	58%	79%	45%	50%
Speed-Related Injury Crashes	82	89	88	99
Percent of Speed-Related Injury Crashes to Total Injury Crashes	32%	32%	33%	31%

Virginia House District 67 Unrestrained Crash Statistics

Report Generated May, 2024

	Count	Highest Time Period(s)	Highest Day(s)	Highest Month(s)
Fatal Crashes	8	6:00pm - 8:59pm	Saturday	April • January
Unrestrained Fatalities	8	(38%)	(50%)	(50%)
Serious Injury Crashes	29	6:00pm - 8:59pm	Friday	December
		(28%)	(24%)	(28%)



House District 67 Unrestrained-Related Crashes

Interstate Crashes

- Fatal
- Serious Injury

Non-interstate Crashes

- Fatal
- Serious Injury

The blue gradient represents the density of all unrestrained-related crashes.

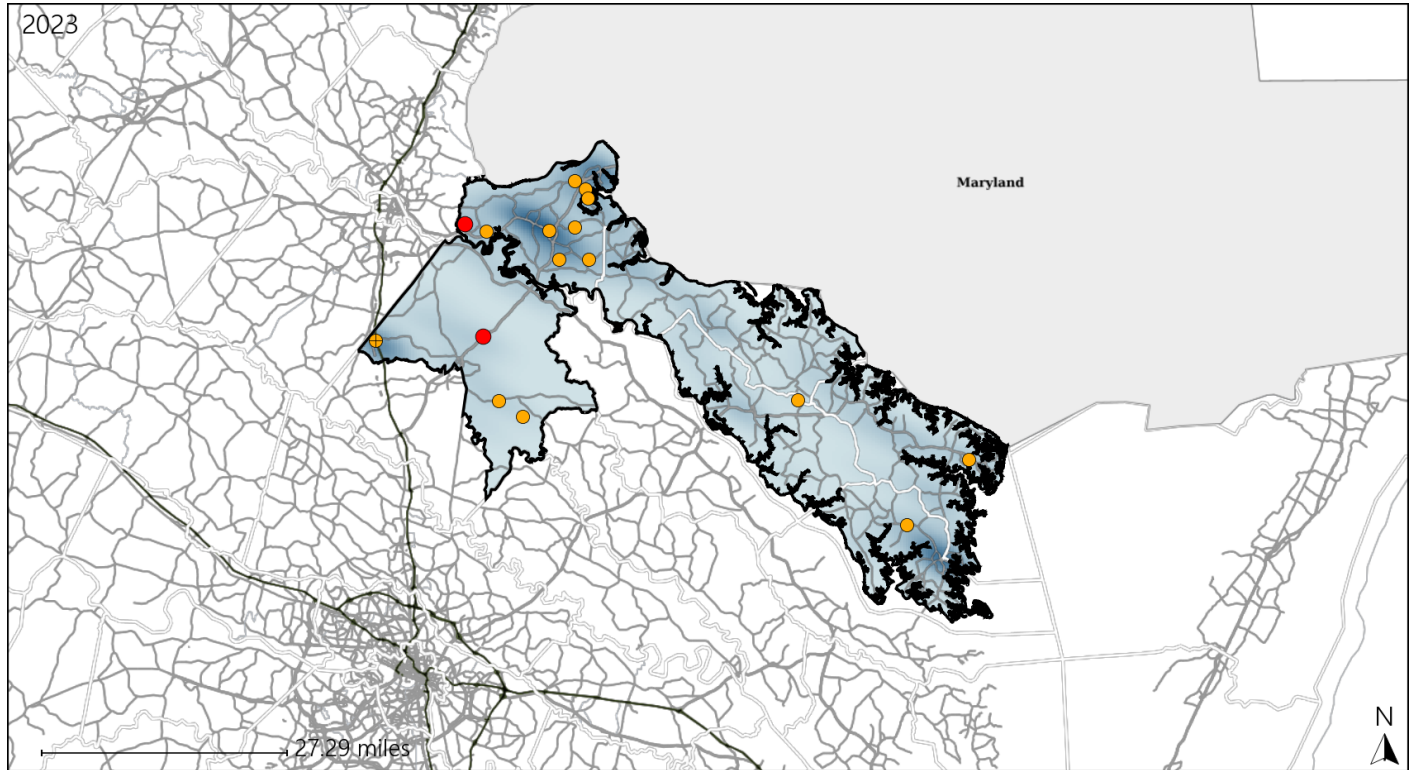


Available Crash Data - Calendar Year (CY)	CY 2020	CY 2021	CY 2022	CY 2023
Total Crashes	918	1045	1076	1113
Fatalities	20	26	12	17
Injuries	363	410	400	497
Unrestrained Fatalities	14	10	6	8
Percent of Unrestrained Fatalities to Total Fatalities	70%	38%	50%	47%
Unrestrained Injuries	63	76	71	71
Percent of Unrestrained Injuries to Total Injuries	17%	19%	18%	14%

Virginia House District 67 Distracted Driving Crash Statistics

Report Generated May, 2024

	Count	Highest Time Period(s)	Highest Day(s)	Highest Month(s)
Fatal Crashes	2	6:00am - 8:59am	Friday • Tuesday	January • September
Resulting Fatalities	2	Midnight - 2:59am (100%)	(100%)	(100%)
Serious Injury Crashes	14	6:00am - 8:59am (43%)	Monday (36%)	May (21%)



House District 67 Distracted Driving-Related Crashes

- | | |
|--|--|
| Interstate Crashes | Non-interstate Crashes |
| ● Fatal | ● Fatal |
| ● Serious Injury | ● Serious Injury |

The blue gradient represents the density of all distracted driving-related crashes.



Available Crash Data - Calendar Year (CY)	CY 2020	CY 2021	CY 2022	CY 2023
Total Crashes	918	1045	1076	1113
Fatal Crashes	19	24	11	16
Injury Crashes	259	282	267	319
Distracted Driving-Related Fatal Crashes	1	1	0	2
Percent of Distracted Driving-Related Fatal Crashes to Total Fatal Crashes	5%	4%	0%	13%
Distracted Driving-Related Injury Crashes	50	58	56	70
Percent of Distracted Driving-Related Injury Crashes to Total Injury Crashes	19%	21%	21%	22%