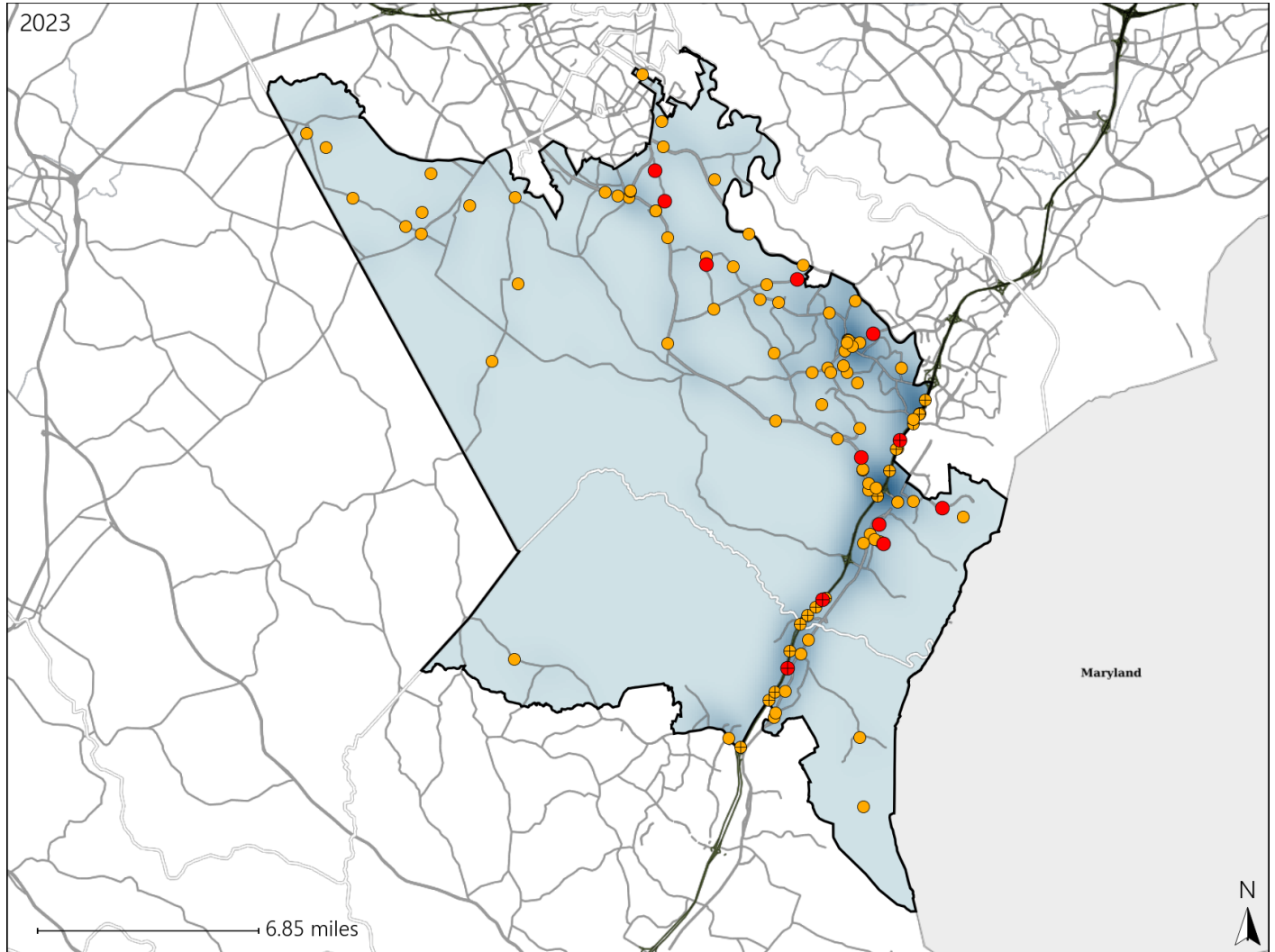


Virginia Senate District 29 Crash Statistics

Report Generated May, 2024

	Count	Highest Time Period(s)	Highest Day(s)	Highest Month(s)
Fatal Crashes	12	3:00pm - 5:59pm	Wednesday	August
Resulting Fatalities	13	9:00pm - 11:59pm (50%)	(33%)	(25%)
Serious Injury Crashes	95	6:00pm - 8:59pm (23%)	Monday (20%)	November (14%)



Senate District 29 Crashes

Interstate Crashes

- Fatal
- Serious Injury

Non-interstate Crashes

- Fatal
- Serious Injury

The blue gradient represents the density of all crashes.

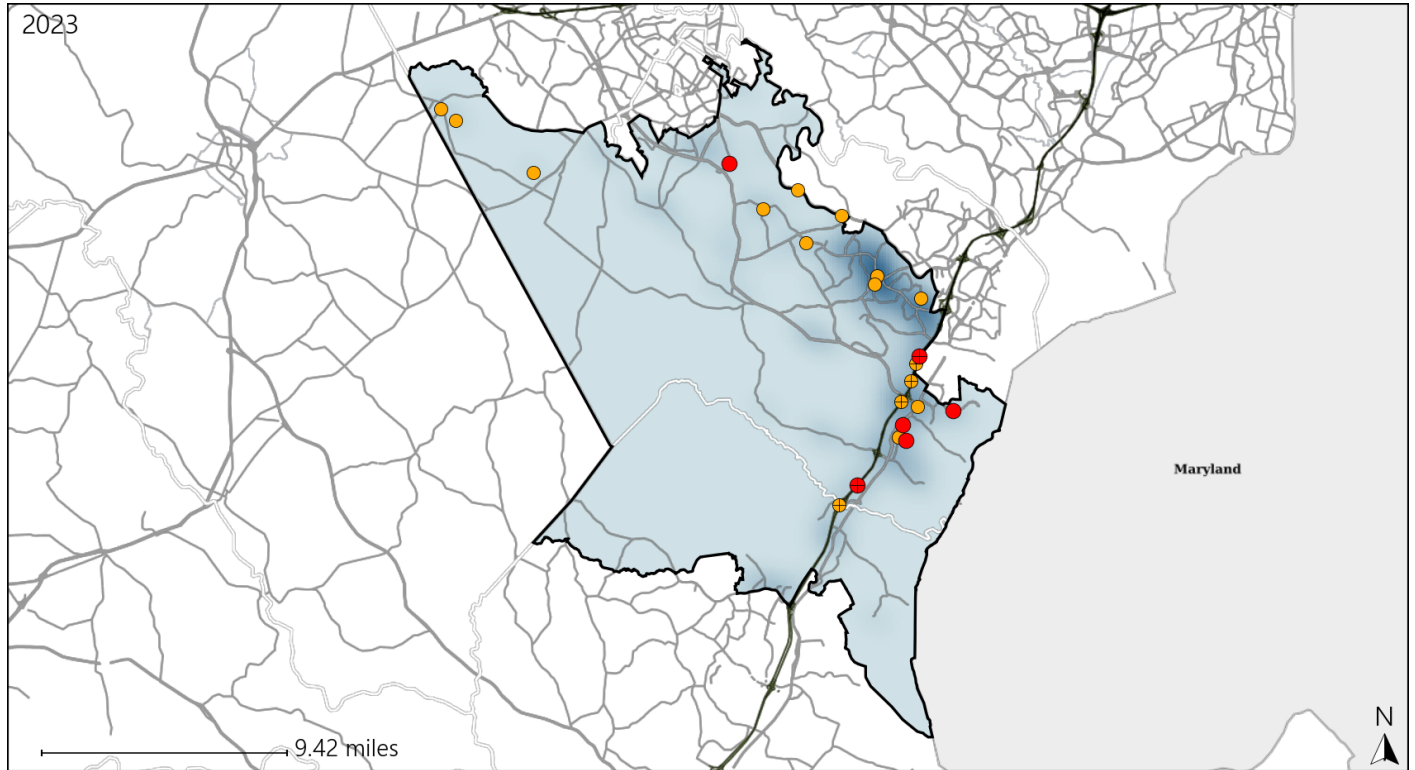


Available Crash Data - Calendar Year (CY)	CY 2020	CY 2021	CY 2022	CY 2023
Total Crashes	1762	2303	2468	2519
Fatal Crashes	11	18	11	12
Injury Crashes	440	616	679	765

Virginia Senate District 29 Alcohol Crash Statistics

Report Generated May, 2024

	Count	Highest Time Period(s)	Highest Day(s)	Highest Month(s)
Fatal Crashes	6	9:00pm - 11:59pm	Saturday • Sunday	August • December
Resulting Fatalities	6	Midnight - 2:59am (66%)	(66%)	(34%)
Serious Injury Crashes	16	9:00pm - 11:59pm (38%)	Saturday (25%)	June (25%)



Senate District 29 Alcohol-Related Crashes

Interstate Crashes Non-interstate Crashes
 ● Fatal ● Fatal
 ● Serious Injury ● Serious Injury

The blue gradient represents the density of all alcohol-related crashes.

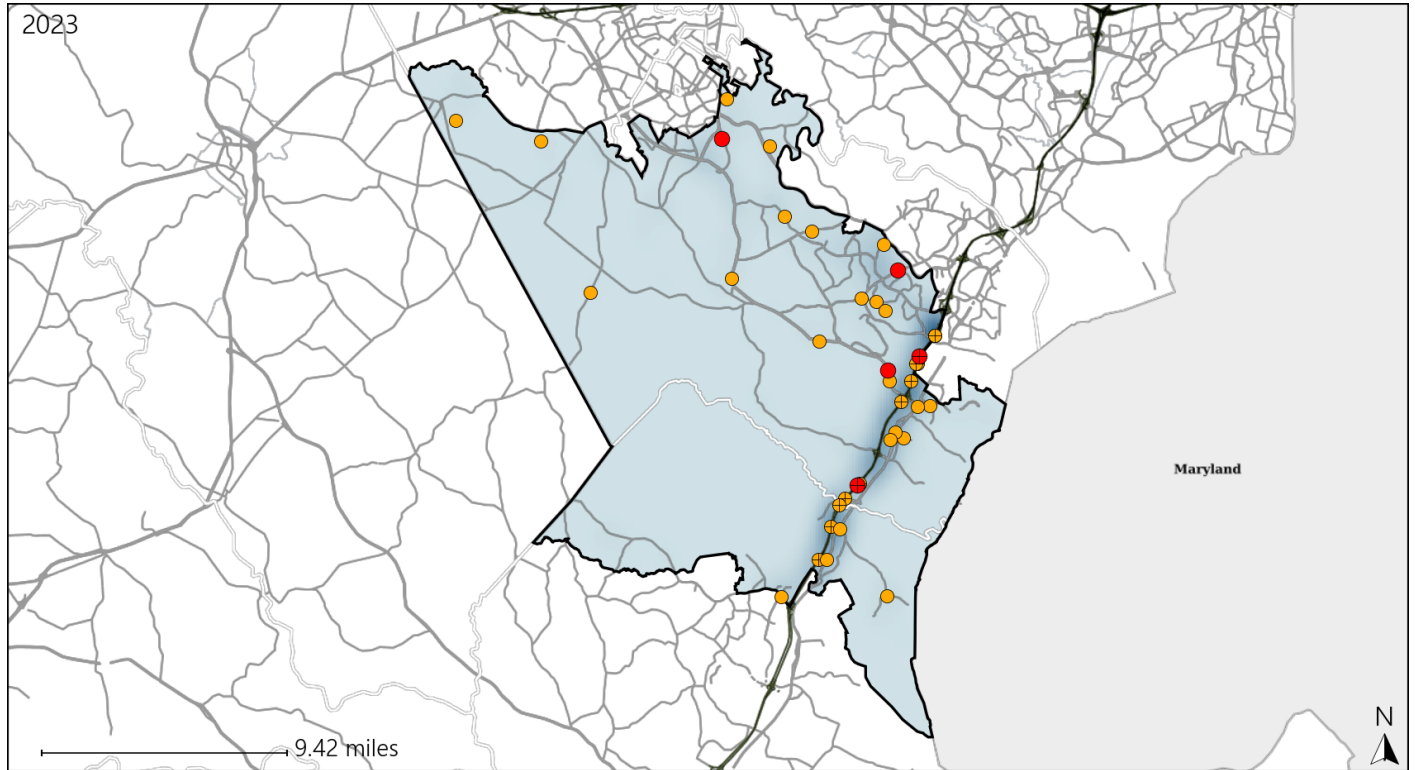


Available Crash Data - Calendar Year (CY)	CY 2020	CY 2021	CY 2022	CY 2023
Total Crashes	1762	2303	2468	2519
Fatal Crashes	11	18	11	12
Injury Crashes	440	616	679	765
Alcohol-Related Fatal Crashes	1	6	3	6
Percent of Alcohol-Related Fatal Crashes to Total Fatal Crashes	9%	33%	27%	50%
Alcohol-Related Injury Crashes	39	51	47	59
Percent of Alcohol-Related Injury Crashes to Total Injury Crashes	9%	8%	7%	8%

Virginia Senate District 29 Speed Crash Statistics

Report Generated May, 2024

	Count	Highest Time Period(s)	Highest Day(s)	Highest Month(s)
Fatal Crashes	5	6:00pm - 8:59pm	Wednesday	August
Resulting Fatalities	6	9:00pm - 11:59pm (80%)	(40%)	(40%)
Serious Injury Crashes	34	9:00pm - 11:59pm (24%)	Monday (24%)	September (21%)



Senate District 29 Speed-Related Crashes

Interstate Crashes Non-interstate Crashes
 ● Fatal ● Fatal
 ● Serious Injury ● Serious Injury

The blue gradient represents the density of all speed-related crashes.

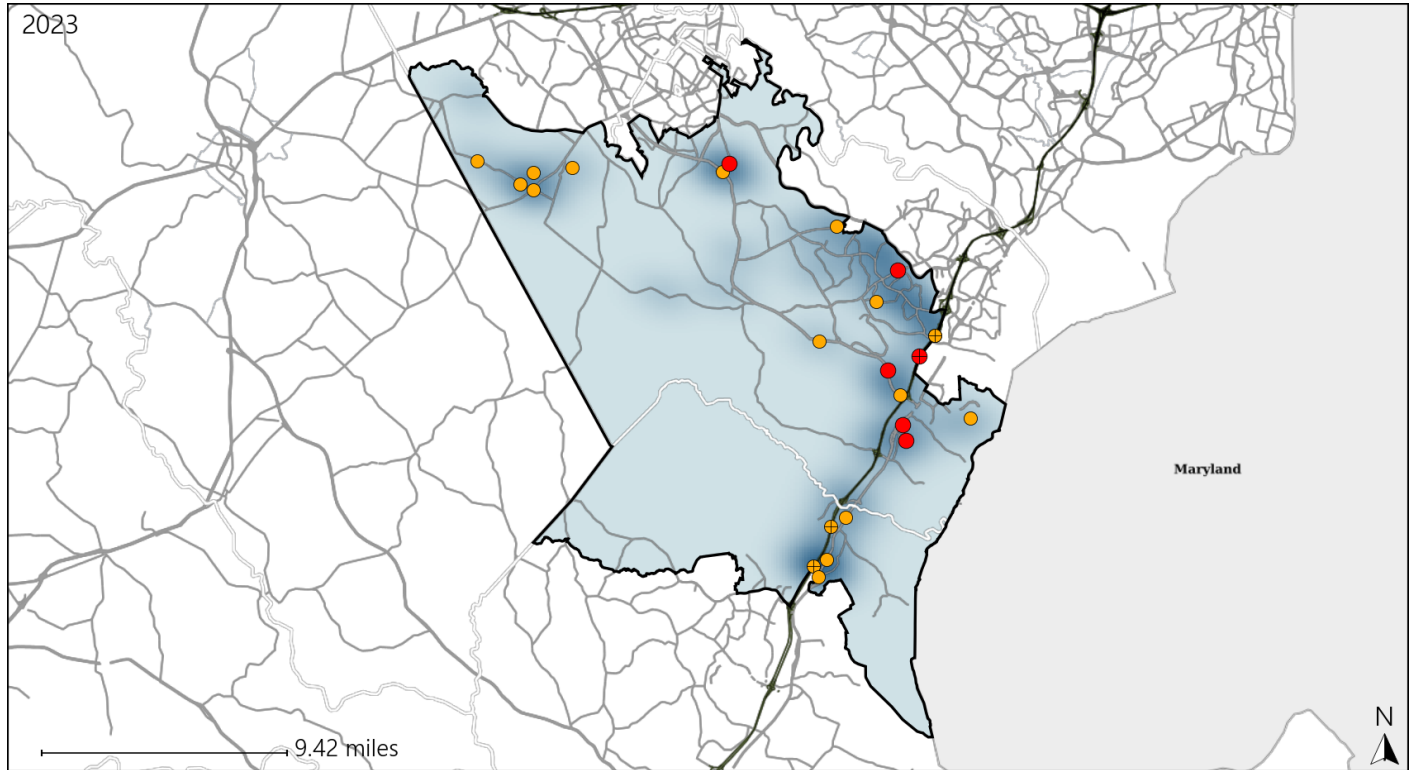


Available Crash Data - Calendar Year (CY)	CY 2020	CY 2021	CY 2022	CY 2023
Total Crashes	1762	2303	2468	2519
Fatal Crashes	11	18	11	12
Injury Crashes	440	616	679	765
Speed-Related Fatal Crashes	6	7	3	5
Percent of Speed-Related Fatal Crashes to Total Fatal Crashes	55%	39%	27%	42%
Speed-Related Injury Crashes	128	163	176	197
Percent of Speed-Related Injury Crashes to Total Injury Crashes	29%	26%	26%	26%

Virginia Senate District 29 Unrestrained Crash Statistics

Report Generated May, 2024

	Count	Highest Time Period(s)	Highest Day(s)	Highest Month(s)
Fatal Crashes	6	6:00pm - 8:59pm	Wednesday	August
Unrestrained Fatalities	6	Midnight - 2:59am (66%)	(50%)	(33%)
Serious Injury Crashes	18	Noon - 2:59pm (33%)	Sunday • Thursday (56%)	June (22%)



Senate District 29 Unrestrained-Related Crashes

Interstate Crashes

Non-interstate Crashes

- Fatal
- Serious Injury

- Fatal
- Serious Injury

The blue gradient represents the density of all unrestrained-related crashes.

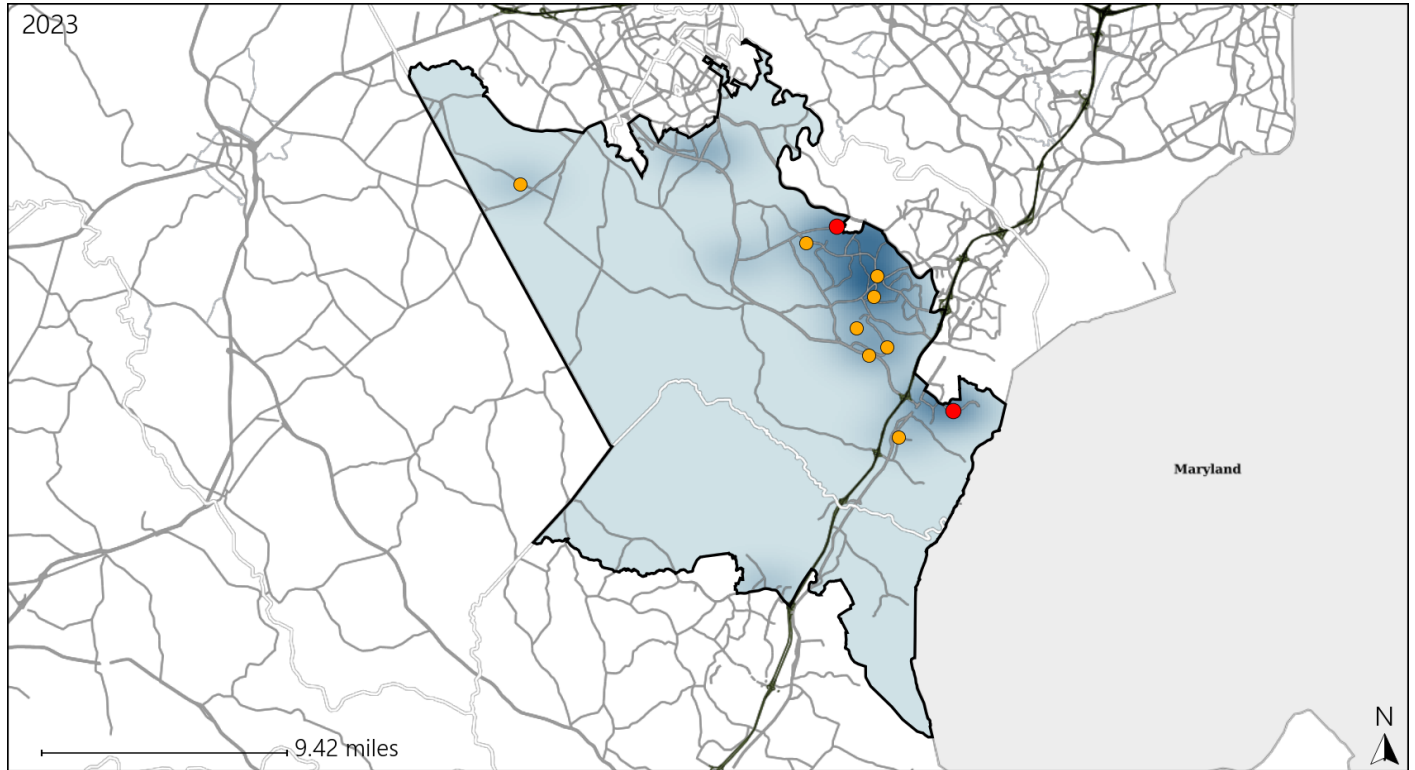


Available Crash Data - Calendar Year (CY)	CY 2020	CY 2021	CY 2022	CY 2023
Total Crashes	1762	2303	2468	2519
Fatalities	11	20	11	13
Injuries	737	1054	1114	1331
Unrestrained Fatalities	3	5	1	6
Percent of Unrestrained Fatalities to Total Fatalities	27%	25%	9%	46%
Unrestrained Injuries	41	67	48	57
Percent of Unrestrained Injuries to Total Injuries	6%	6%	4%	4%

Virginia Senate District 29 Pedestrian Crash Statistics

Report Generated May, 2024

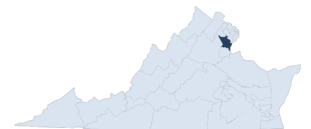
	Count	Highest Time Period(s)	Highest Day(s)	Highest Month(s)
Fatal Crashes	2	3:00pm - 5:59pm	Monday • Tuesday	December • May
Pedestrian Fatalities	2	9:00pm - 11:59pm (100%)	(100%)	(100%)
Serious Injury Crashes	9	6:00pm - 8:59pm (44%)	Thursday (56%)	October (44%)



Senate District 29 Pedestrian-Related Crashes

- | | |
|--|--|
| Interstate Crashes | Non-interstate Crashes |
| ● Fatal | ● Fatal |
| ● Serious Injury | ● Serious Injury |

The blue gradient represents the density of all pedestrian-related crashes.

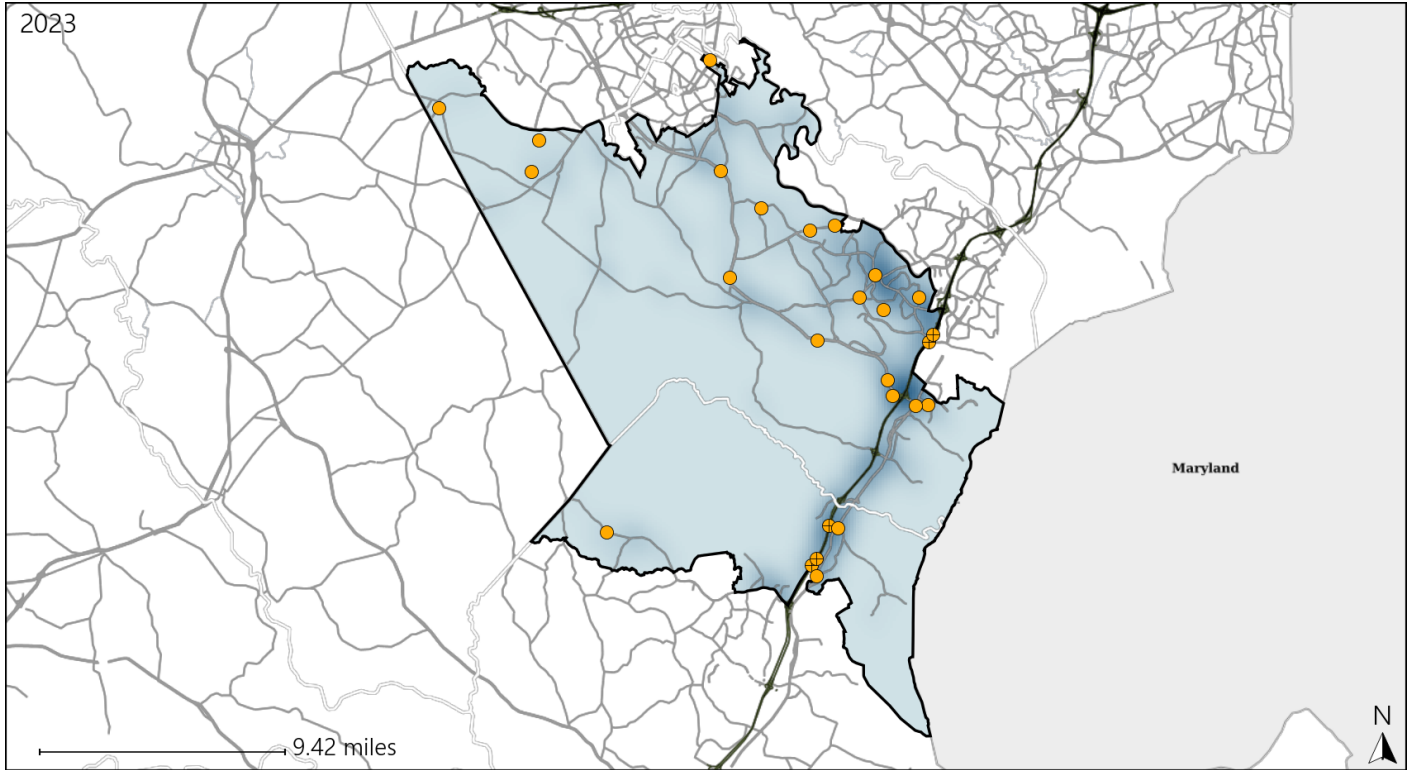


Available Crash Data - Calendar Year (CY)	CY 2020	CY 2021	CY 2022	CY 2023
Total Crashes	1762	2303	2468	2519
Fatal Crashes	11	18	11	12
Injury Crashes	440	616	679	765
Pedestrian-Related Fatal Crashes	2	2	4	2
Percent of Pedestrian-Related Fatal Crashes to Total Fatal Crashes	18%	11%	36%	17%
Pedestrian-Related Injury Crashes	14	16	23	25
Percent of Pedestrian-Related Injury Crashes to Total Injury Crashes	3%	3%	3%	3%

Virginia Senate District 29 Distracted Driving Crash Statistics

Report Generated May, 2024

	Count	Highest Time Period(s)	Highest Day(s)	Highest Month(s)
Fatal Crashes	0	-	-	-
Resulting Fatalities	0	-	-	-
Serious Injury Crashes	26	Midnight - 2:59am (19%)	Monday (27%)	September (19%)



Senate District 29 Distracted Driving-Related Crashes

- | | |
|--------------------|------------------------|
| Interstate Crashes | Non-interstate Crashes |
| Fatal | Fatal |
| Serious Injury | Serious Injury |

The blue gradient represents the density of all distracted driving-related crashes.



Available Crash Data - Calendar Year (CY)	CY 2020	CY 2021	CY 2022	CY 2023
Total Crashes	1762	2303	2468	2519
Fatal Crashes	11	18	11	12
Injury Crashes	440	616	679	765
Distracted Driving-Related Fatal Crashes	3	2	2	0
Percent of Distracted Driving-Related Fatal Crashes to Total Fatal Crashes	27%	11%	18%	0%
Distracted Driving-Related Injury Crashes	106	155	147	166
Percent of Distracted Driving-Related Injury Crashes to Total Injury Crashes	24%	25%	22%	22%