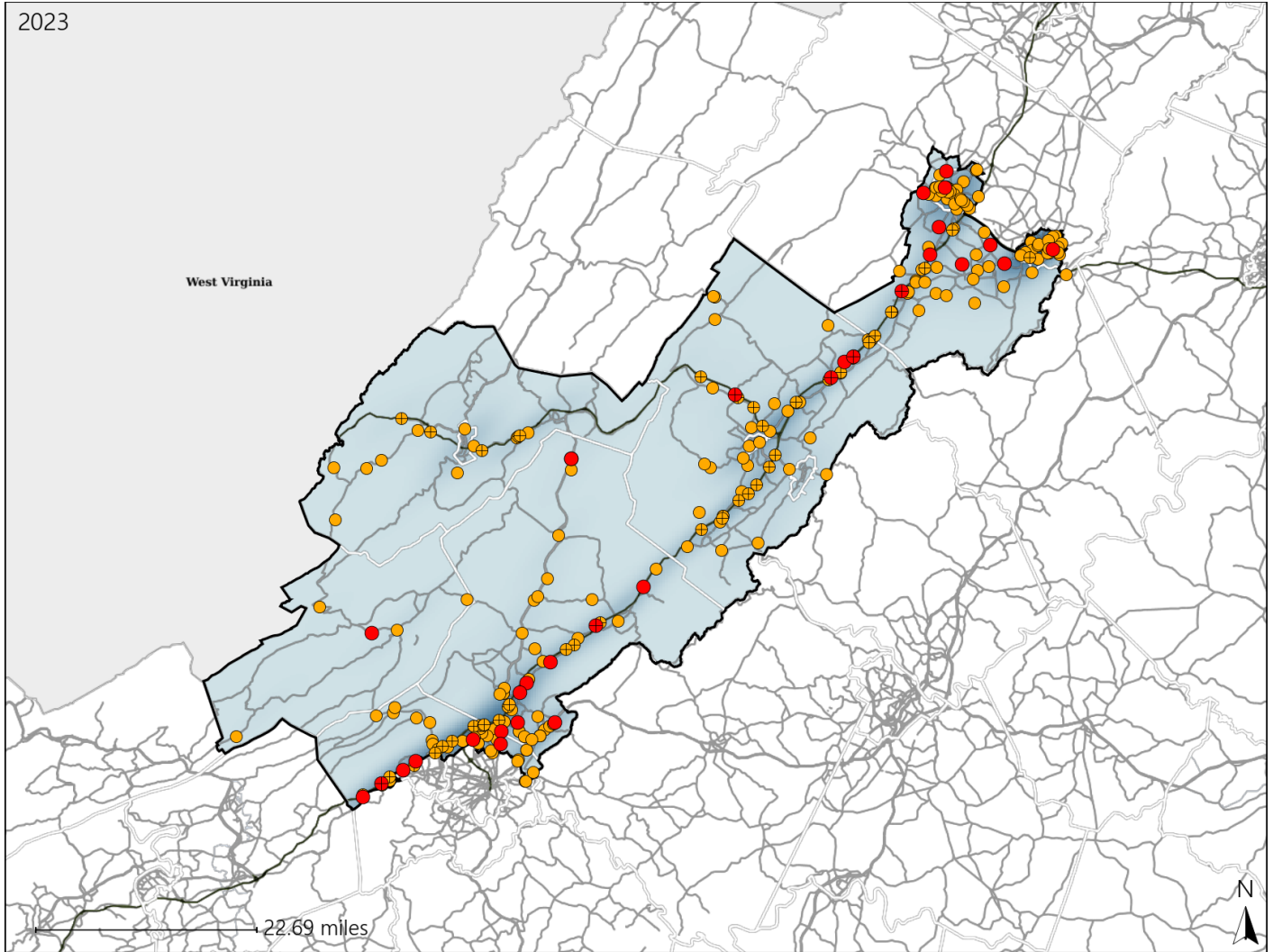


# Virginia Senate District 3 Crash Statistics

Report Generated May, 2024

	Count	Highest Time Period(s)	Highest Day(s)	Highest Month(s)
<b>Fatal Crashes</b>	<b>31</b>	<b>3:00pm - 5:59pm</b>	<b>Saturday • Tuesday</b>	<b>August • May</b>
<b>Resulting Fatalities</b>	<b>33</b>	(26%)	(46%)	(32%)
<b>Serious Injury Crashes</b>	<b>238</b>	<b>3:00pm - 5:59pm</b>	<b>Tuesday • Friday</b>	<b>October</b>
		(24%)	(32%)	(13%)



### Senate District 3 Crashes

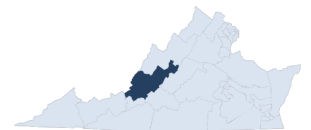
Interstate Crashes

- Fatal
- Serious Injury

Non-interstate Crashes

- Fatal
- Serious Injury

The blue gradient represents the density of all crashes.

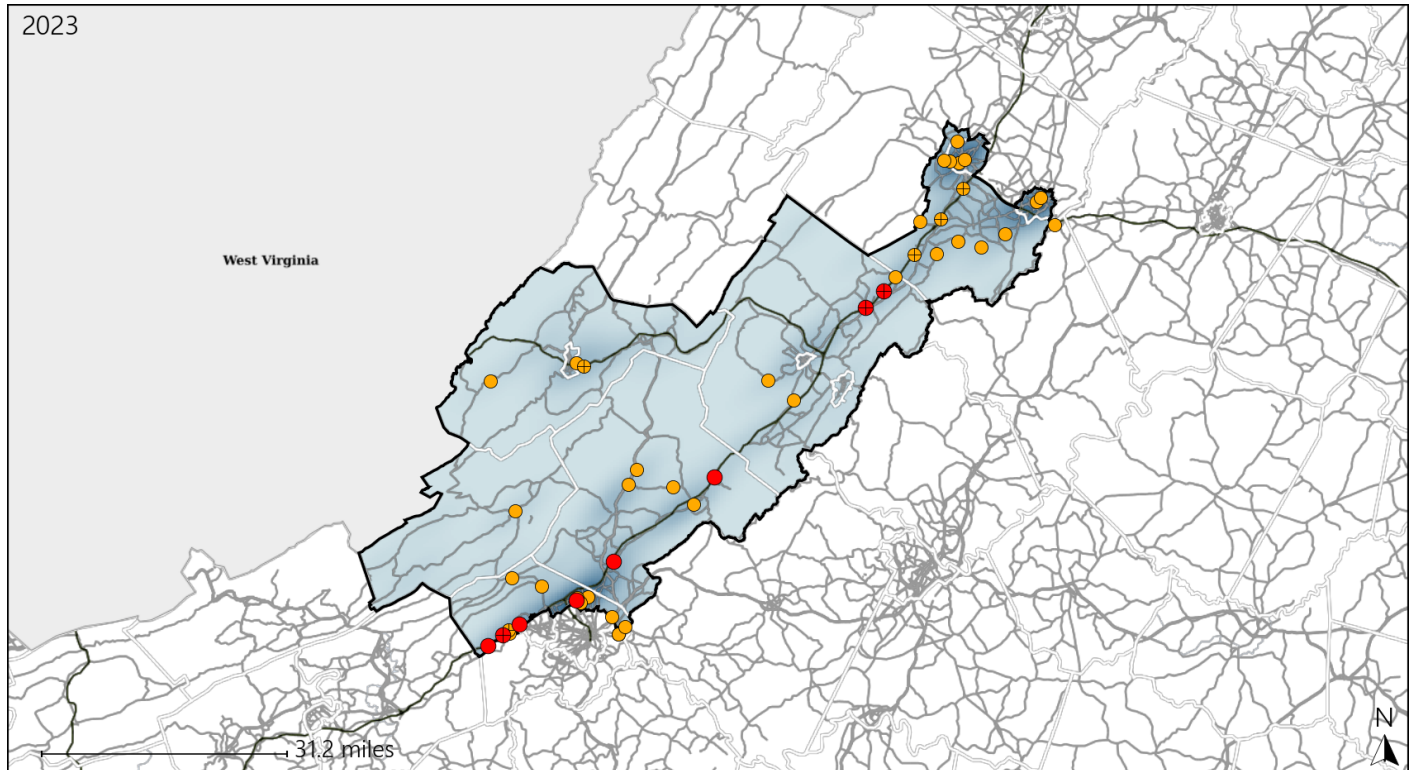


Available Crash Data - Calendar Year (CY)	CY 2020	CY 2021	CY 2022	CY 2023
Total Crashes	3476	3697	4004	4262
Fatal Crashes	21	35	40	31
Injury Crashes	1017	1065	1076	1057

# Virginia Senate District 3 Alcohol Crash Statistics

Report Generated May, 2024

	Count	Highest Time Period(s)	Highest Day(s)	Highest Month(s)
<b>Fatal Crashes</b>	<b>8</b>	<b>3:00pm - 5:59pm</b>	<b>Saturday</b>	<b>August</b>
<b>Resulting Fatalities</b>	<b>8</b>	(38%)	(50%)	(25%)
<b>Serious Injury Crashes</b>	<b>38</b>	<b>Midnight - 2:59am</b>	<b>Saturday</b>	<b>April - February</b>
		(24%)	(29%)	(26%)




### Senate District 3 Alcohol-Related Crashes


Interstate Crashes

Non-interstate Crashes

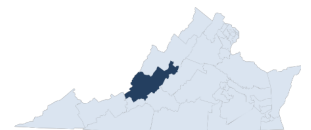
 Fatal

 Fatal

 Serious Injury

 Serious Injury

The blue gradient represents the density of all alcohol-related crashes.

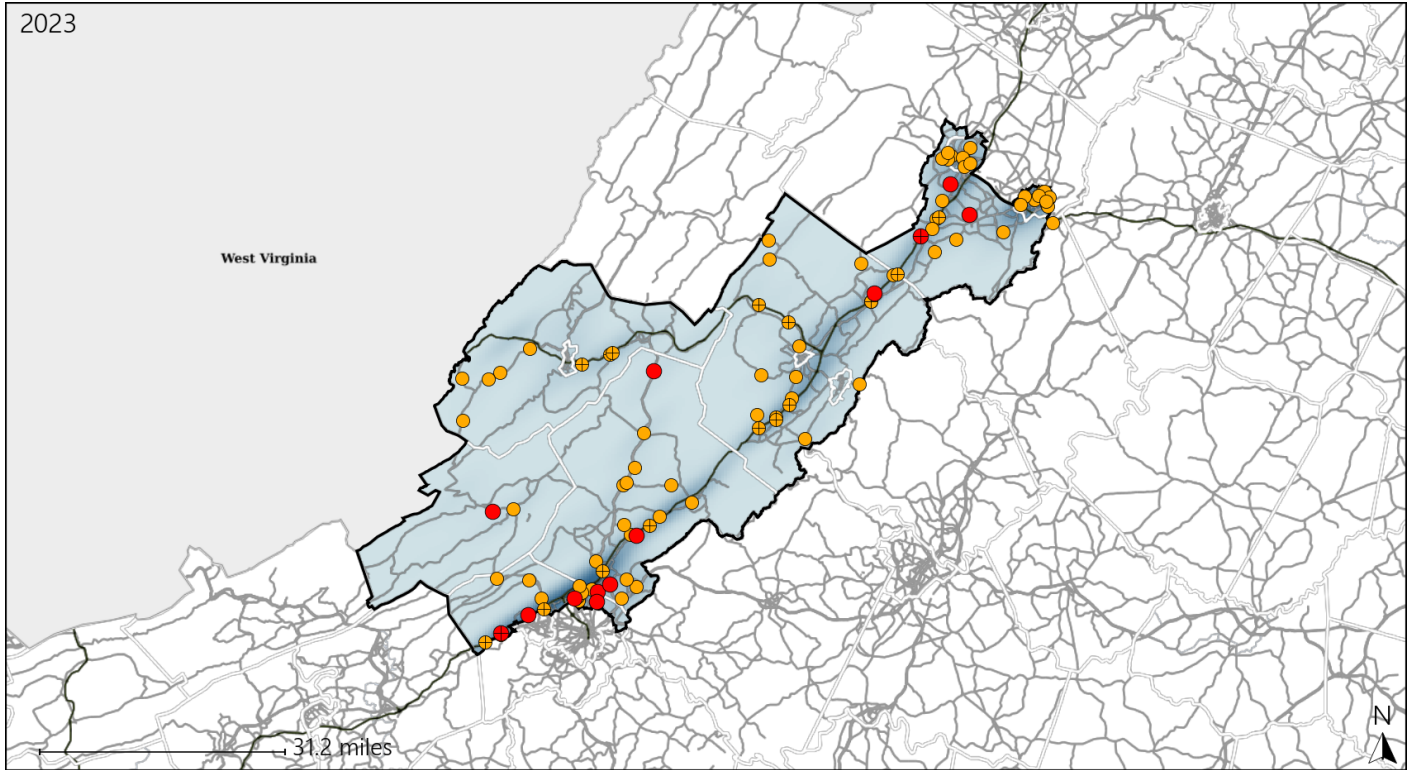


Available Crash Data - Calendar Year (CY)	CY 2020	CY 2021	CY 2022	CY 2023
Total Crashes	3476	3697	4004	4262
Fatal Crashes	21	35	40	31
Injury Crashes	1017	1065	1076	1057
Alcohol-Related Fatal Crashes	5	9	9	8
Percent of Alcohol-Related Fatal Crashes to Total Fatal Crashes	24%	26%	23%	26%
Alcohol-Related Injury Crashes	67	84	70	92
Percent of Alcohol-Related Injury Crashes to Total Injury Crashes	7%	8%	7%	9%

# Virginia Senate District 3 Speed Crash Statistics

Report Generated May, 2024

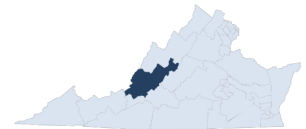
	Count	Highest Time Period(s)	Highest Day(s)	Highest Month(s)
<b>Fatal Crashes</b>	<b>13</b>	Noon - 2:59pm (23%)	Tuesday (31%)	July • May (46%)
<b>Resulting Fatalities</b>	<b>15</b>			
<b>Serious Injury Crashes</b>	<b>82</b>	9:00am - 11:59am (18%)	Saturday (20%)	August • November (22%)



### Senate District 3 Speed-Related Crashes

Interstate Crashes                      Non-interstate Crashes  
 ● Fatal                                      ● Fatal  
 ⊕ Serious Injury                          ⊕ Serious Injury

The blue gradient represents the density of all speed-related crashes.

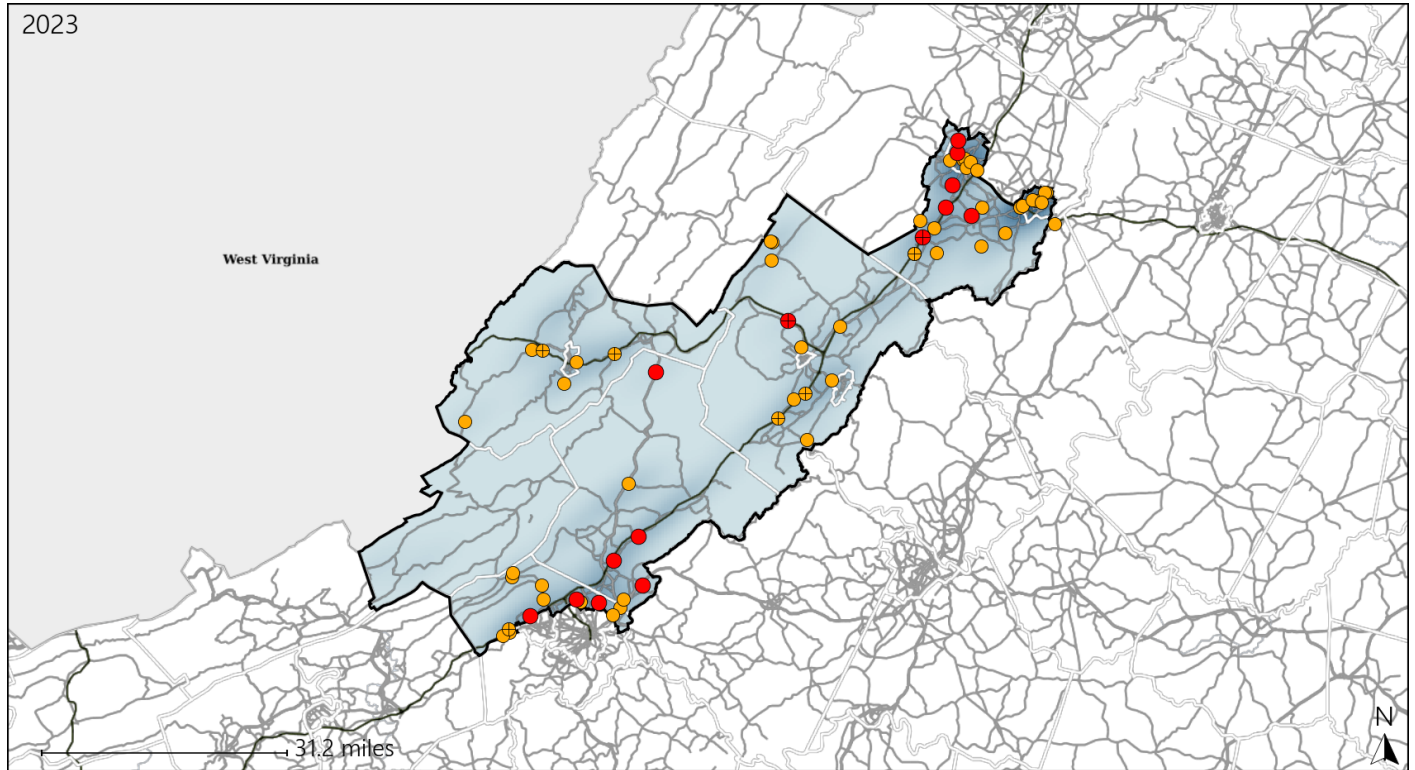


Available Crash Data - Calendar Year (CY)	CY 2020	CY 2021	CY 2022	CY 2023
Total Crashes	3476	3697	4004	4262
Fatal Crashes	21	35	40	31
Injury Crashes	1017	1065	1076	1057
Speed-Related Fatal Crashes	12	19	13	13
Percent of Speed-Related Fatal Crashes to Total Fatal Crashes	57%	54%	33%	42%
Speed-Related Injury Crashes	237	284	281	293
Percent of Speed-Related Injury Crashes to Total Injury Crashes	23%	27%	26%	28%

# Virginia Senate District 3 Unrestrained Crash Statistics

Report Generated May, 2024

	Count	Highest Time Period(s)	Highest Day(s)	Highest Month(s)
<b>Fatal Crashes</b>	<b>14</b>	<b>3:00pm - 5:59pm</b>	<b>Tuesday</b>	<b>August + January</b>
<b>Unrestrained Fatalities</b>	<b>14</b>	<b>Noon - 2:59pm</b> (58%)	<b>(29%)</b>	<b>(28%)</b>
<b>Serious Injury Crashes</b>	<b>51</b>	<b>3:00pm - 5:59pm</b> (27%)	<b>Monday + Saturday</b> (36%)	<b>February</b> (16%)



### Senate District 3 Unrestrained-Related Crashes

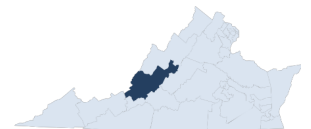
Interstate Crashes

Non-interstate Crashes

- Fatal
- Serious Injury

- Fatal
- Serious Injury

The blue gradient represents the density of all unrestrained-related crashes.

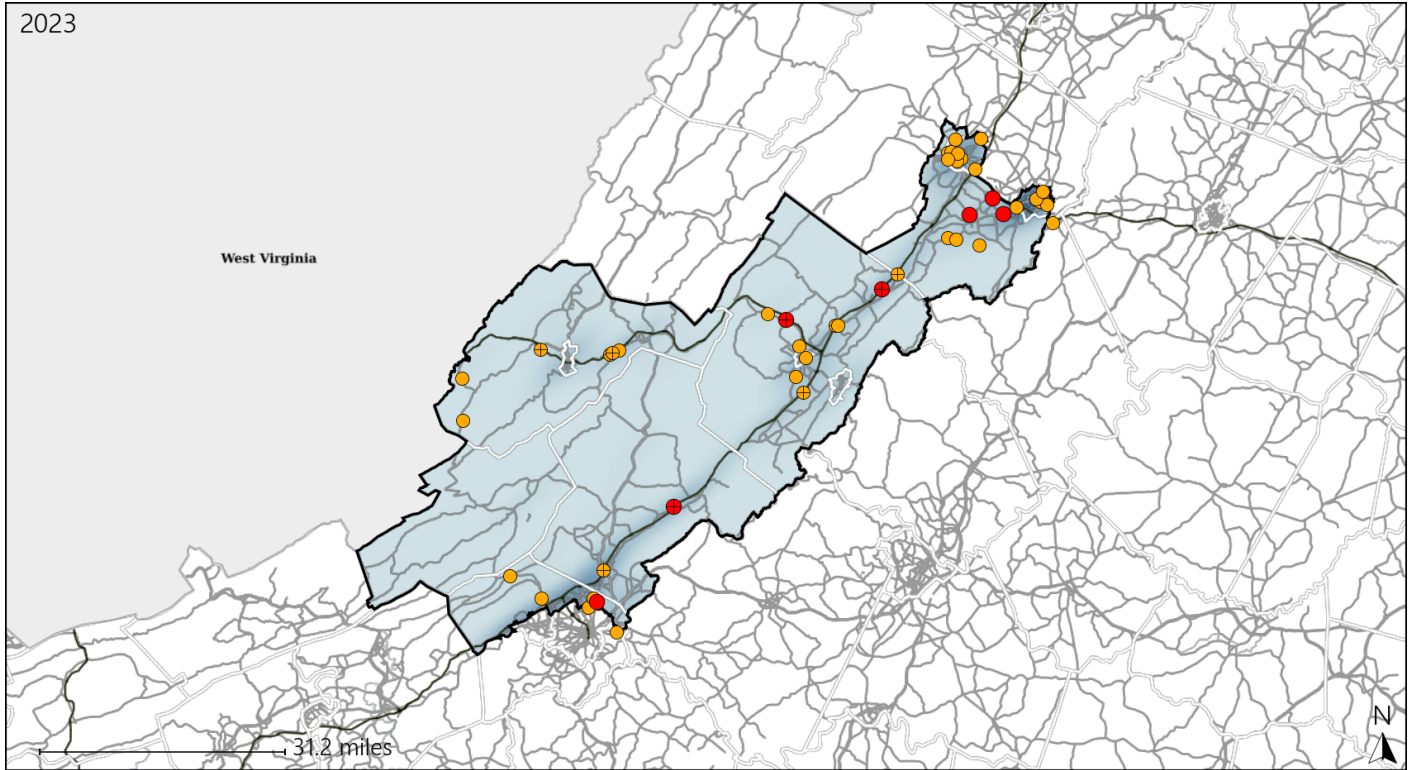


Available Crash Data - Calendar Year (CY)	CY 2020	CY 2021	CY 2022	CY 2023
Total Crashes	3476	3697	4004	4262
Fatalities	24	40	41	33
Injuries	1463	1501	1488	1464
Unrestrained Fatalities	6	23	17	14
Percent of Unrestrained Fatalities to Total Fatalities	25%	57%	41%	42%
Unrestrained Injuries	132	154	128	142
Percent of Unrestrained Injuries to Total Injuries	9%	10%	9%	10%

# Virginia Senate District 3 Distracted Driving Crash Statistics

Report Generated May, 2024

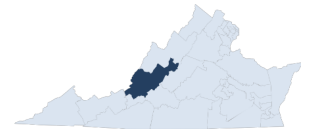
	Count	Highest Time Period(s)	Highest Day(s)	Highest Month(s)
<b>Fatal Crashes</b>	<b>7</b>	<b>6:00am - 8:59am</b>	<b>Tuesday</b>	<b>August - October</b>
<b>Resulting Fatalities</b>	<b>7</b>	(43%)	(43%)	(58%)
<b>Serious Injury Crashes</b>	<b>38</b>	<b>3:00pm - 5:59pm</b>	<b>Thursday</b>	<b>October</b>
		(29%)	(26%)	(24%)



## Senate District 3 Distracted Driving-Related Crashes

- |                    |                        |
|--------------------|------------------------|
| Interstate Crashes | Non-interstate Crashes |
| ● Fatal            | ● Fatal                |
| ● Serious Injury   | ● Serious Injury       |

The blue gradient represents the density of all distracted driving-related crashes.



Available Crash Data - Calendar Year (CY)	CY 2020	CY 2021	CY 2022	CY 2023
Total Crashes	3476	3697	4004	4262
Fatal Crashes	21	35	40	31
Injury Crashes	1017	1065	1076	1057
Distracted Driving-Related Fatal Crashes	7	3	3	7
Percent of Distracted Driving-Related Fatal Crashes to Total Fatal Crashes	33%	9%	8%	23%
Distracted Driving-Related Injury Crashes	188	179	164	203
Percent of Distracted Driving-Related Injury Crashes to Total Injury Crashes	18%	17%	15%	19%