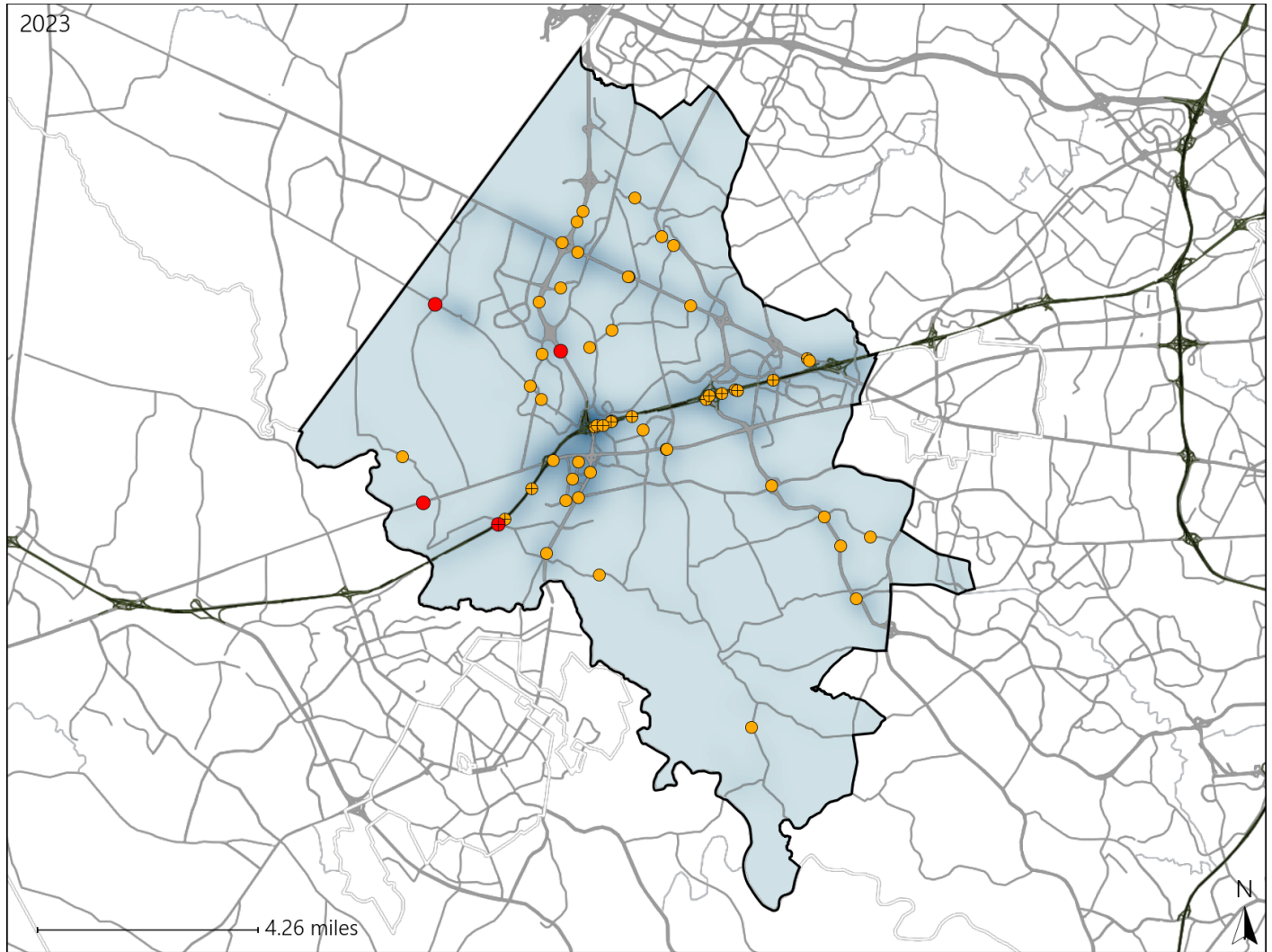


Virginia Senate District 36 Crash Statistics

Report Generated May, 2024

	Count	Highest Time Period(s)	Highest Day(s)	Highest Month(s)
Fatal Crashes	4	9:00pm - 11:59pm	Friday • Saturday	April • November
Resulting Fatalities	4	(50%)	(50%)	(100%)
Serious Injury Crashes	52	6:00pm - 8:59pm	Saturday	April • October
		(21%)	(23%)	(24%)



Senate District 36 Crashes

Interstate Crashes

- Fatal
- Serious Injury

Non-interstate Crashes

- Fatal
- Serious Injury

The blue gradient represents the density of all crashes.

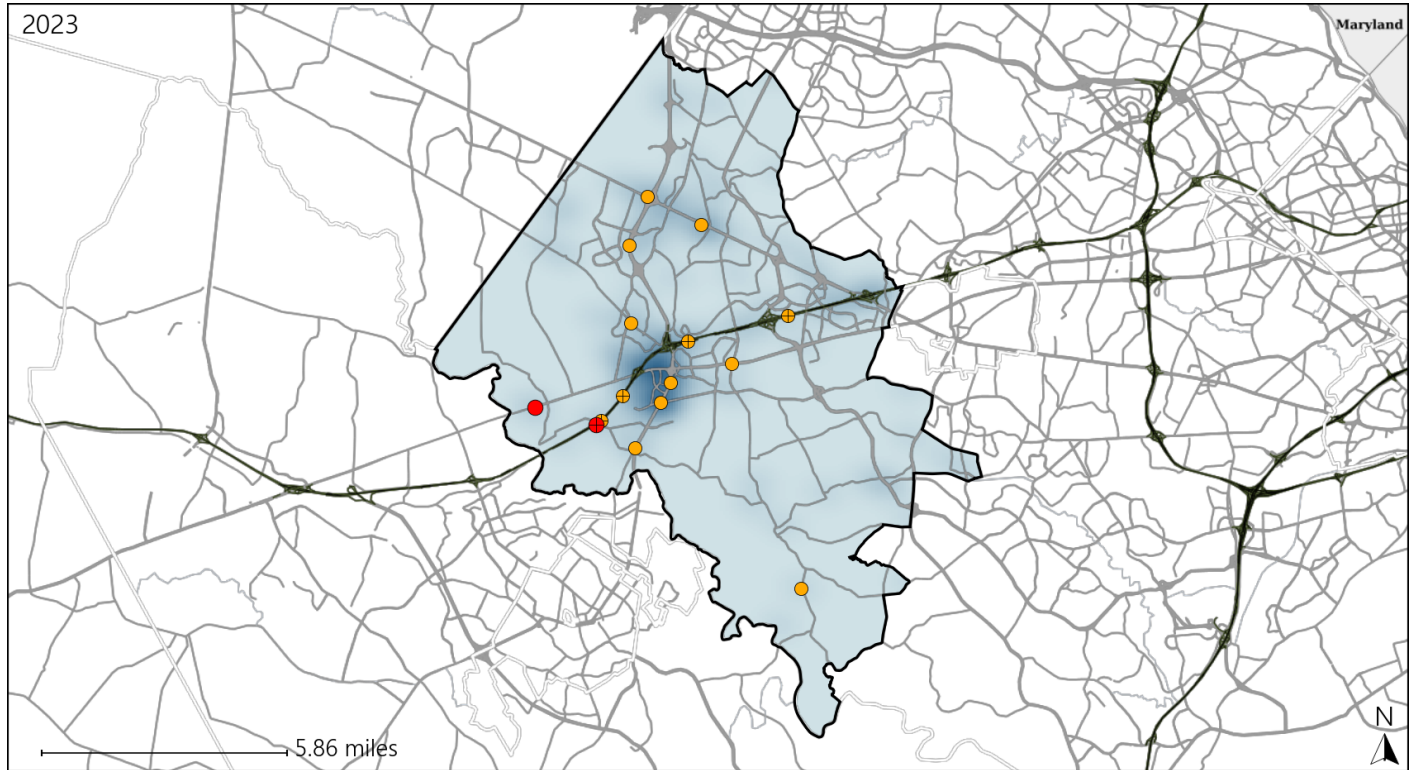


Available Crash Data - Calendar Year (CY)	CY 2020	CY 2021	CY 2022	CY 2023
Total Crashes	1894	2191	2453	2425
Fatal Crashes	8	6	6	4
Injury Crashes	484	584	580	675

Virginia Senate District 36 Alcohol Crash Statistics

Report Generated May, 2024

	Count	Highest Time Period(s)	Highest Day(s)	Highest Month(s)
Fatal Crashes	2	9:00pm - 11:59pm	Friday • Saturday	April
Resulting Fatalities	2	Midnight - 2:59am (100%)	(100%)	(100%)
Serious Injury Crashes	13	9:00pm - 11:59pm (31%)	Wednesday (31%)	April • January (30%)



Senate District 36 Alcohol-Related Crashes

Interstate Crashes

Non-interstate Crashes

● Fatal

● Fatal

⊕ Serious Injury

● Serious Injury

The blue gradient represents the density of all alcohol-related crashes.

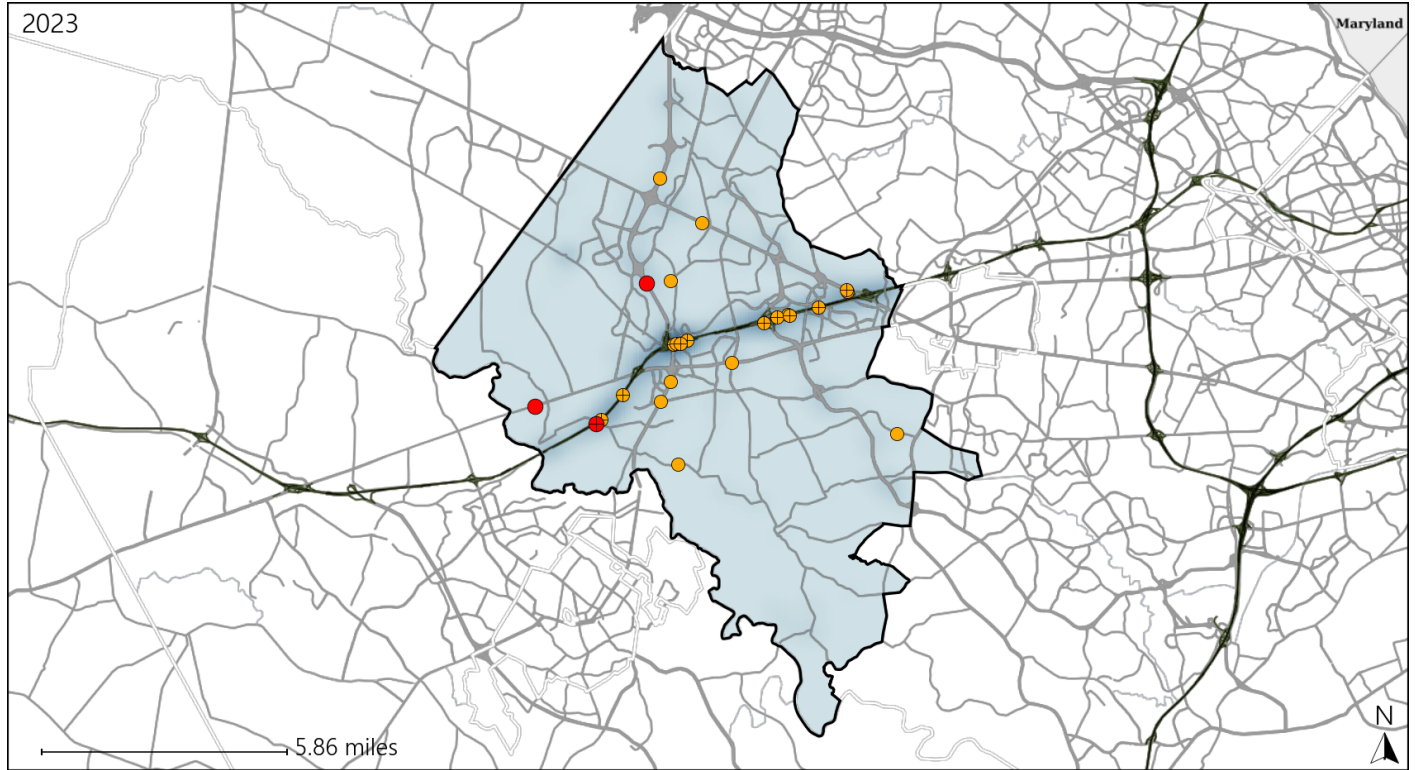


Available Crash Data - Calendar Year (CY)	CY 2020	CY 2021	CY 2022	CY 2023
Total Crashes	1894	2191	2453	2425
Fatal Crashes	8	6	6	4
Injury Crashes	484	584	580	675
Alcohol-Related Fatal Crashes	4	2	2	2
Percent of Alcohol-Related Fatal Crashes to Total Fatal Crashes	50%	33%	33%	50%
Alcohol-Related Injury Crashes	35	44	42	49
Percent of Alcohol-Related Injury Crashes to Total Injury Crashes	7%	8%	7%	7%

Virginia Senate District 36 Speed Crash Statistics

Report Generated May, 2024

	Count	Highest Time Period(s)	Highest Day(s)	Highest Month(s)
Fatal Crashes	3	9:00pm - 11:59pm	Friday • Saturday	April
Resulting Fatalities	3	(67%)	(66%)	(67%)
Serious Injury Crashes	21	9:00pm - 11:59pm	Saturday • Thursday	April • June
		(29%)	(48%)	(28%)



Senate District 36 Speed-Related Crashes

Interstate Crashes Non-interstate Crashes
 ● Fatal ● Fatal
 ⊕ Serious Injury ⊕ Serious Injury

The blue gradient represents the density of all speed-related crashes.

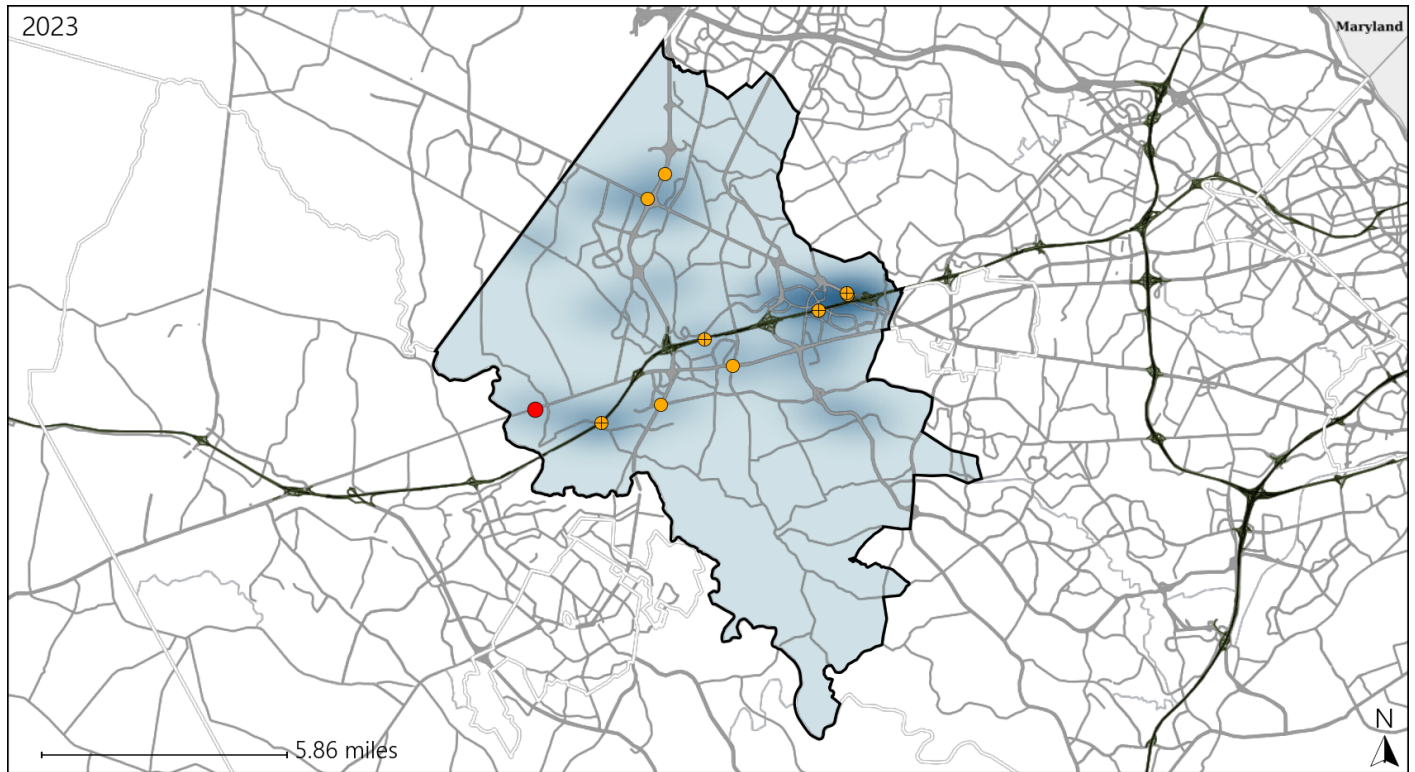


Available Crash Data - Calendar Year (CY)	CY 2020	CY 2021	CY 2022	CY 2023
Total Crashes	1894	2191	2453	2425
Fatal Crashes	8	6	6	4
Injury Crashes	484	584	580	675
Speed-Related Fatal Crashes	3	5	0	3
Percent of Speed-Related Fatal Crashes to Total Fatal Crashes	38%	83%	0%	75%
Speed-Related Injury Crashes	107	139	121	159
Percent of Speed-Related Injury Crashes to Total Injury Crashes	22%	24%	21%	24%

Virginia Senate District 36 Unrestrained Crash Statistics

Report Generated May, 2024

	Count	Highest Time Period(s)	Highest Day(s)	Highest Month(s)
Fatal Crashes	1	Midnight - 2:59am	Saturday	April
Unrestrained Fatalities	1	(100%)	(100%)	(100%)
Serious Injury Crashes	9	3:00am - 5:59am 9:00pm - 11:59pm	Friday • Monday	June • October
		(44%)	(44%)	(44%)



Senate District 36 Unrestrained-Related Crashes

Interstate Crashes

Non-interstate Crashes

● Fatal

● Fatal

⊕ Serious Injury

⊕ Serious Injury

The blue gradient represents the density of all unrestrained-related crashes.

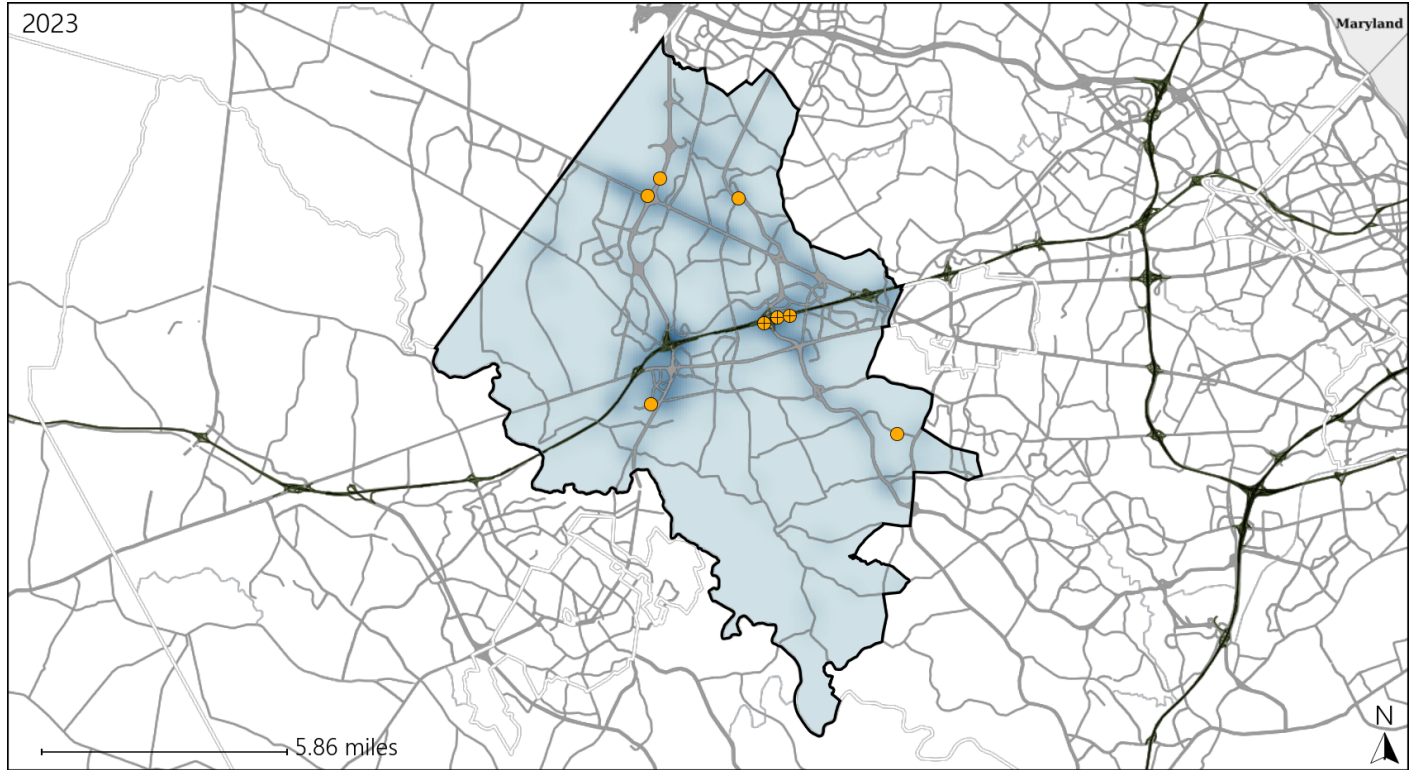


Available Crash Data - Calendar Year (CY)	CY 2020	CY 2021	CY 2022	CY 2023
Total Crashes	1894	2191	2453	2425
Fatalities	8	6	6	4
Injuries	741	925	866	1092
Unrestrained Fatalities	1	1	1	1
Percent of Unrestrained Fatalities to Total Fatalities	13%	17%	17%	25%
Unrestrained Injuries	18	26	24	26
Percent of Unrestrained Injuries to Total Injuries	2%	3%	3%	2%

Virginia Senate District 36 Distracted Driving Crash Statistics

Report Generated May, 2024

	Count	Highest Time Period(s)	Highest Day(s)	Highest Month(s)
Fatal Crashes	0	-	-	-
Resulting Fatalities	0	-	-	-
Serious Injury Crashes	8	6:00pm - 8:59pm (38%)	Thursday (62%)	August • March (50%)



Senate District 36 Distracted Driving-Related Crashes

- | | |
|--|--|
| Interstate Crashes | Non-interstate Crashes |
| ● Fatal | ● Fatal |
| ● Serious Injury | ● Serious Injury |

The blue gradient represents the density of all distracted driving-related crashes.



Available Crash Data - Calendar Year (CY)	CY 2020	CY 2021	CY 2022	CY 2023
Total Crashes	1894	2191	2453	2425
Fatal Crashes	8	6	6	4
Injury Crashes	484	584	580	675
Distracted Driving-Related Fatal Crashes	3	0	0	0
Percent of Distracted Driving-Related Fatal Crashes to Total Fatal Crashes	38%	0%	0%	0%
Distracted Driving-Related Injury Crashes	82	104	98	117
Percent of Distracted Driving-Related Injury Crashes to Total Injury Crashes	17%	18%	17%	17%