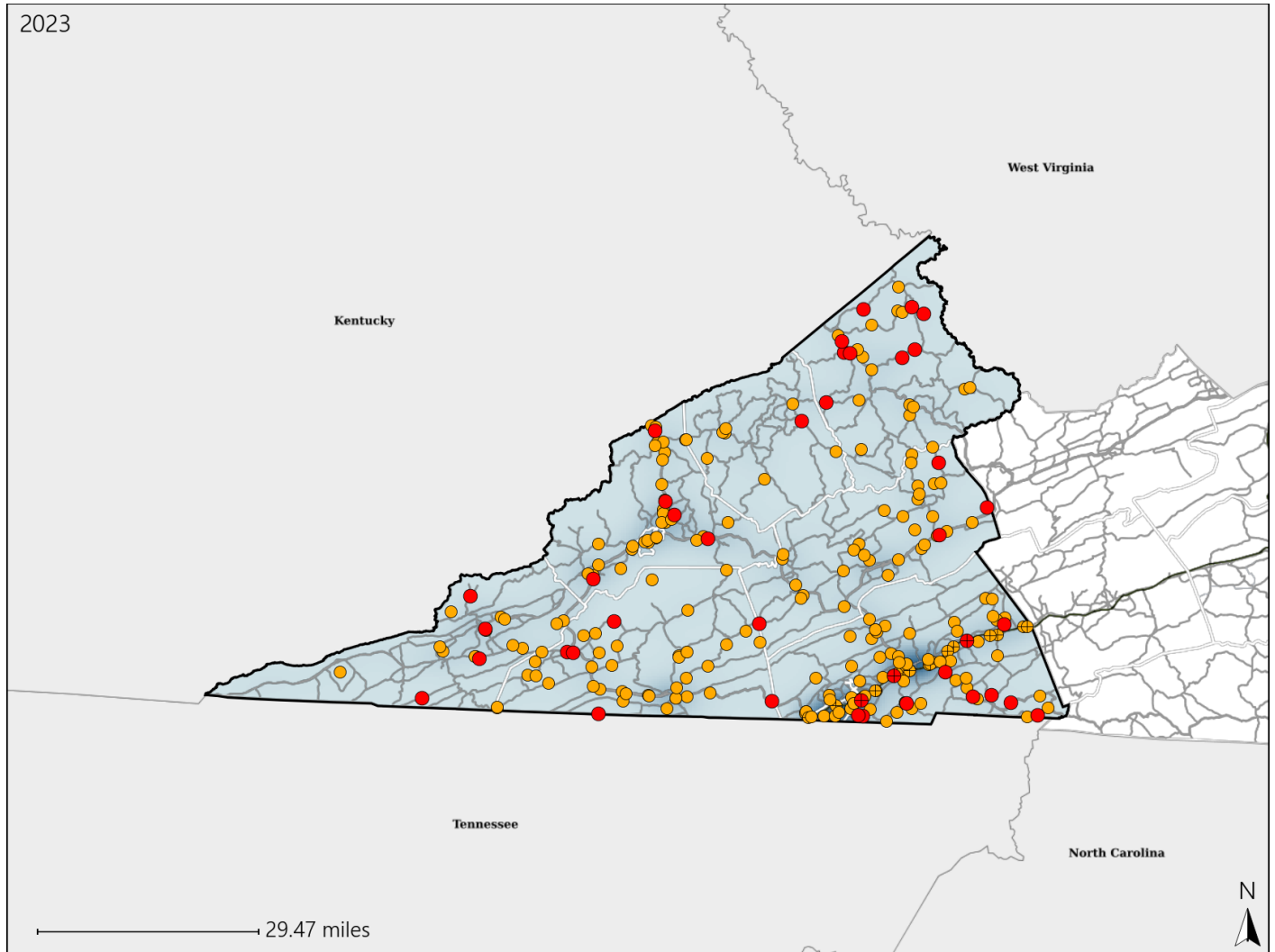


Virginia Senate District 6 Crash Statistics

Report Generated May, 2024

	Count	Highest Time Period(s)	Highest Day(s)	Highest Month(s)
Fatal Crashes	40	3:00pm - 5:59pm	Tuesday	June
Resulting Fatalities	42	(28%)	(20%)	(18%)
Serious Injury Crashes	215	3:00pm - 5:59pm	Saturday	May • August
		(23%)	(18%)	(22%)



Senate District 6 Crashes

Interstate Crashes

- Fatal
- Serious Injury

Non-interstate Crashes

- Fatal
- Serious Injury

The blue gradient represents the density of all crashes.

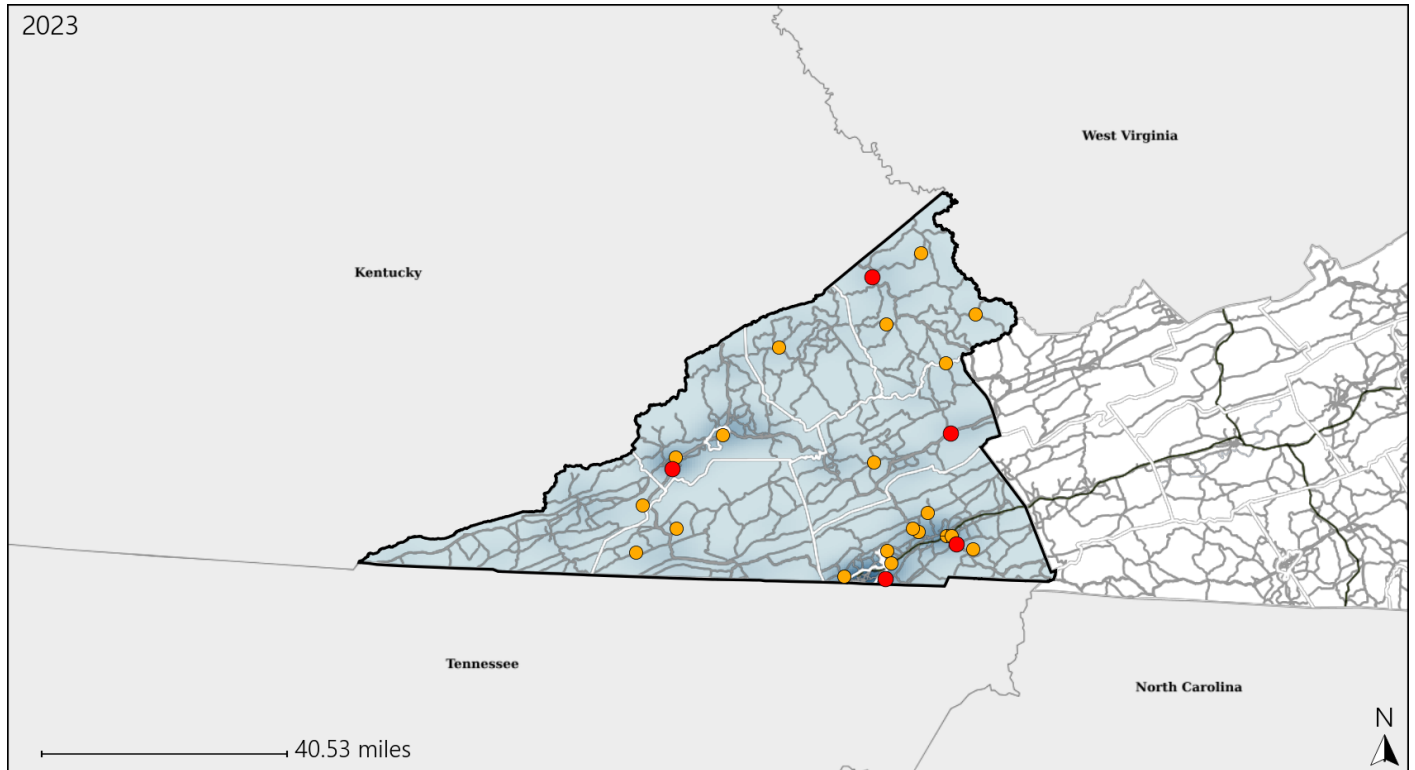


Available Crash Data - Calendar Year (CY)	CY 2020	CY 2021	CY 2022	CY 2023
Total Crashes	2993	3154	3195	3363
Fatal Crashes	37	26	33	40
Injury Crashes	887	970	1013	1082

Virginia Senate District 6 Alcohol Crash Statistics

Report Generated May, 2024

	Count	Highest Time Period(s)	Highest Day(s)	Highest Month(s)
Fatal Crashes	5	9:00pm - 11:59pm	Saturday	April - August
Resulting Fatalities	5	(40%)	(40%)	(80%)
Serious Injury Crashes	20	9:00pm - 11:59pm	Saturday	September
		(25%)	(30%)	(20%)



Senate District 6 Alcohol-Related Crashes

Interstate Crashes Non-interstate Crashes
 ● Fatal ● Fatal
 ⊕ Serious Injury ⊕ Serious Injury

The blue gradient represents the density of all alcohol-related crashes.

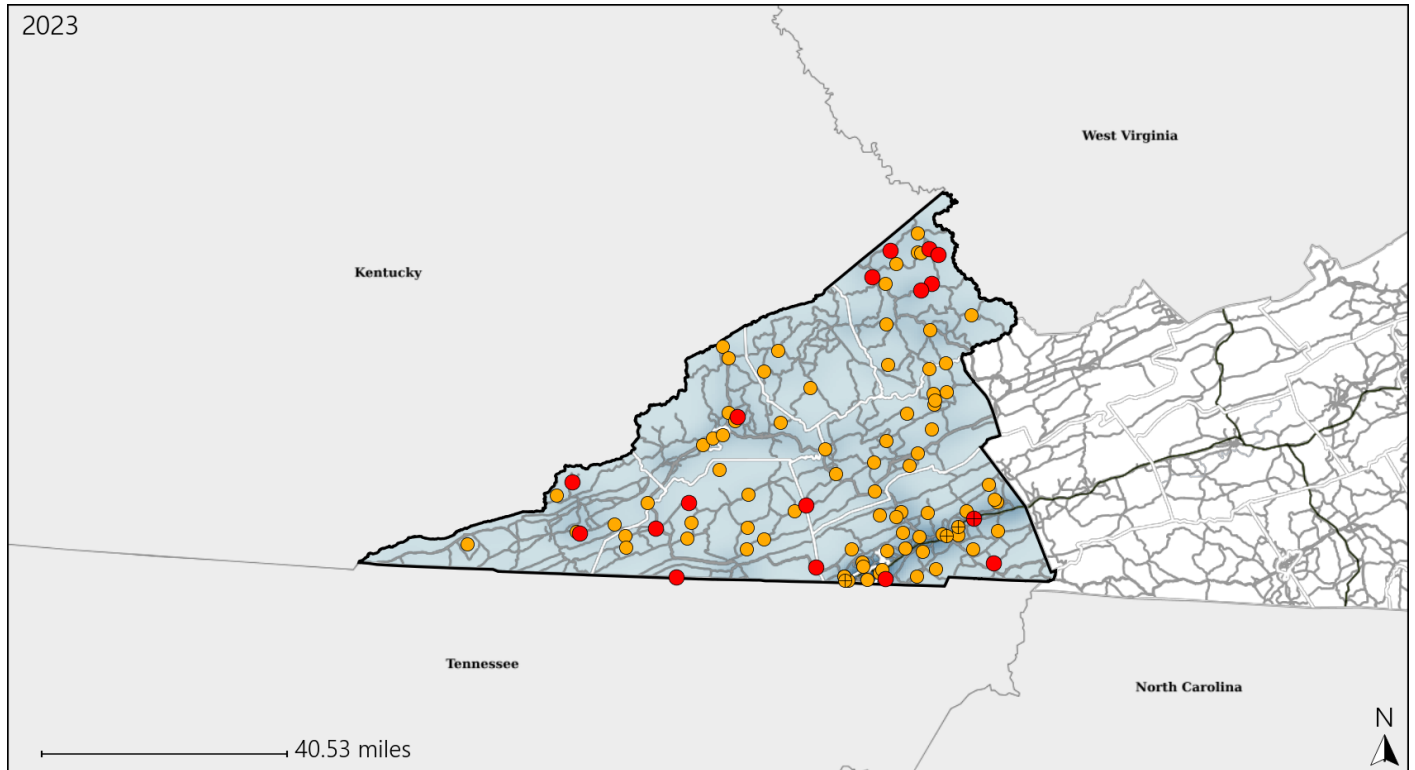


Available Crash Data - Calendar Year (CY)	CY 2020	CY 2021	CY 2022	CY 2023
Total Crashes	2993	3154	3195	3363
Fatal Crashes	37	26	33	40
Injury Crashes	887	970	1013	1082
Alcohol-Related Fatal Crashes	13	1	3	5
Percent of Alcohol-Related Fatal Crashes to Total Fatal Crashes	35%	4%	9%	13%
Alcohol-Related Injury Crashes	62	58	64	48
Percent of Alcohol-Related Injury Crashes to Total Injury Crashes	7%	6%	6%	4%

Virginia Senate District 6 Speed Crash Statistics

Report Generated May, 2024

	Count	Highest Time Period(s)	Highest Day(s)	Highest Month(s)
Fatal Crashes	17	3:00pm - 5:59pm	Sunday • Tuesday	September
Resulting Fatalities	19	(41%)	(48%)	(29%)
Serious Injury Crashes	81	3:00pm - 5:59pm	Monday	August
		(21%)	(20%)	(15%)



Senate District 6 Speed-Related Crashes

Interstate Crashes Non-interstate Crashes
 ● Fatal ● Fatal
 ⊕ Serious Injury ⊕ Serious Injury

The blue gradient represents the density of all speed-related crashes.

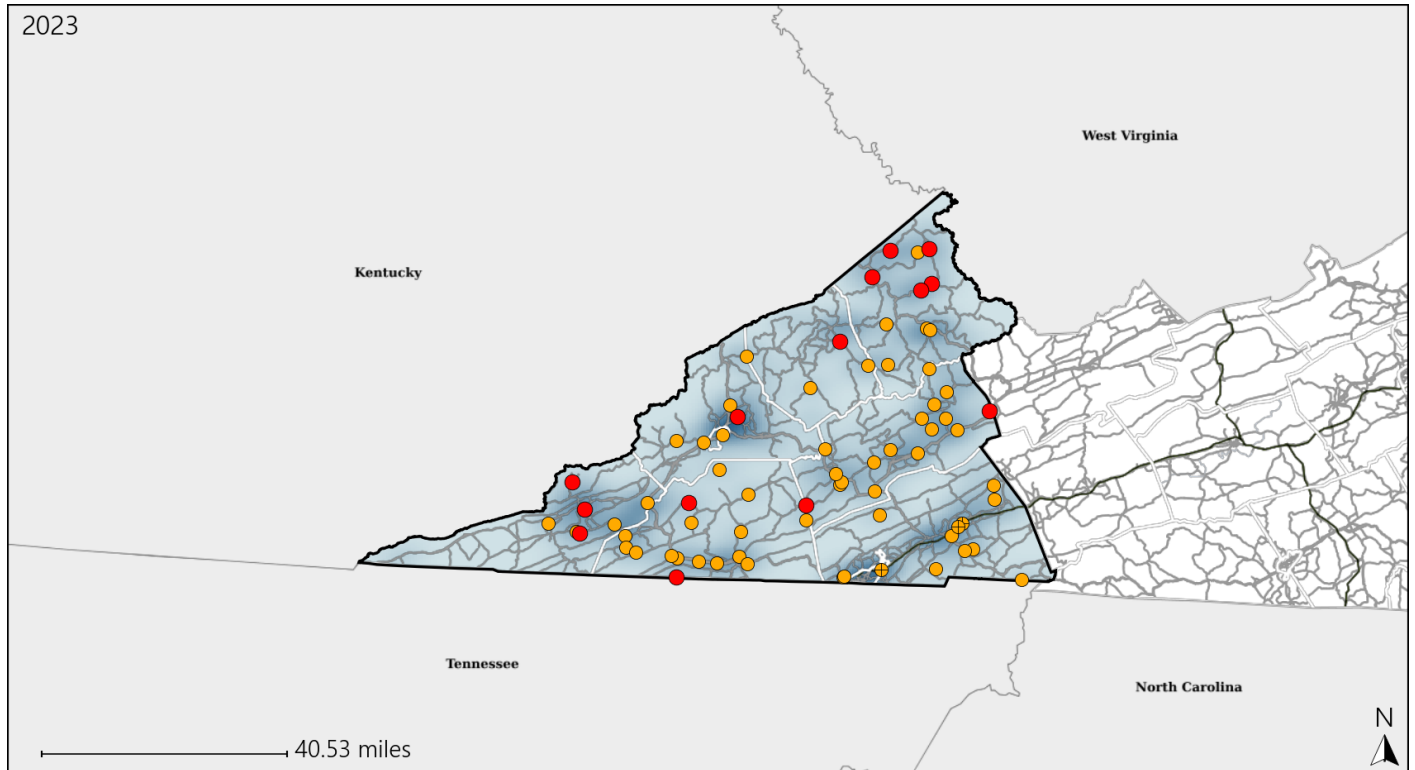


Available Crash Data - Calendar Year (CY)	CY 2020	CY 2021	CY 2022	CY 2023
Total Crashes	2993	3154	3195	3363
Fatal Crashes	37	26	33	40
Injury Crashes	887	970	1013	1082
Speed-Related Fatal Crashes	14	8	14	17
Percent of Speed-Related Fatal Crashes to Total Fatal Crashes	38%	31%	42%	43%
Speed-Related Injury Crashes	303	312	288	280
Percent of Speed-Related Injury Crashes to Total Injury Crashes	34%	32%	28%	26%

Virginia Senate District 6 Unrestrained Crash Statistics

Report Generated May, 2024

	Count	Highest Time Period(s)	Highest Day(s)	Highest Month(s)
Fatal Crashes	14	3:00pm - 5:59pm	Thursday	September
Unrestrained Fatalities	15	(36%)	(29%)	(29%)
Serious Injury Crashes	58	3:00pm - 5:59pm	Monday	August • March
		(19%)	(22%)	(24%)



Senate District 6 Unrestrained-Related Crashes

Interstate Crashes

Non-interstate Crashes

- Fatal
- Serious Injury

- Fatal
- Serious Injury

The blue gradient represents the density of all unrestrained-related crashes.

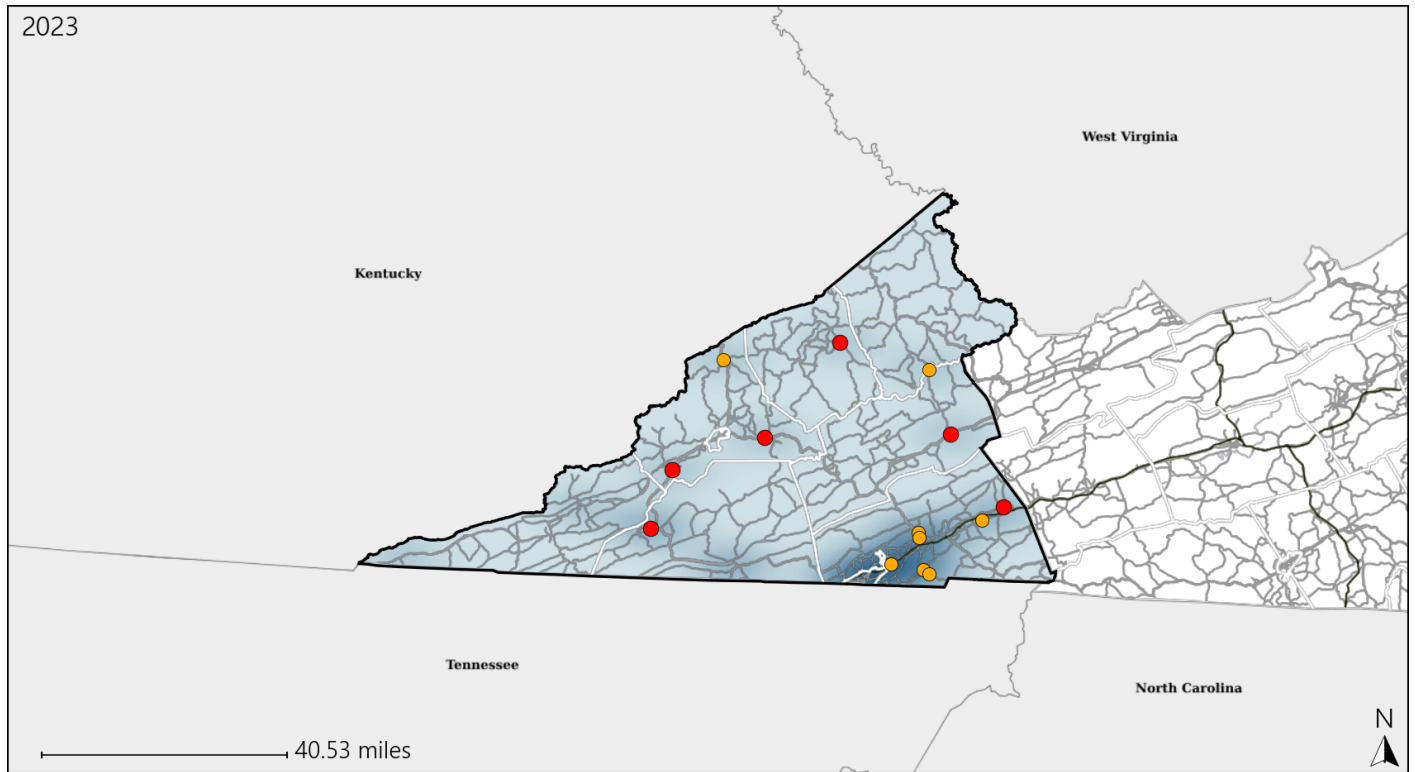


Available Crash Data - Calendar Year (CY)	CY 2020	CY 2021	CY 2022	CY 2023
Total Crashes	2993	3154	3195	3363
Fatalities	41	28	35	42
Injuries	1298	1355	1468	1567
Unrestrained Fatalities	20	13	14	15
Percent of Unrestrained Fatalities to Total Fatalities	49%	46%	40%	36%
Unrestrained Injuries	177	130	168	166
Percent of Unrestrained Injuries to Total Injuries	14%	10%	11%	11%

Virginia Senate District 6 Pedestrian Crash Statistics

Report Generated May, 2024

	Count	Highest Time Period(s)	Highest Day(s)	Highest Month(s)
Fatal Crashes	6	9:00pm - 11:59pm	Thursday • Wednesday	August
Pedestrian Fatalities	5	(33%)	(66%)	(50%)
Serious Injury Crashes	8	3:00pm - 5:59pm 9:00pm - 11:59pm	Thursday • Tuesday	August • November
		(50%)	(50%)	(50%)



Senate District 6 Pedestrian-Related Crashes

Interstate Crashes

Non-interstate Crashes

- Fatal
- ⊕ Serious Injury

- Fatal
- Serious Injury

The blue gradient represents the density of all pedestrian-related crashes.

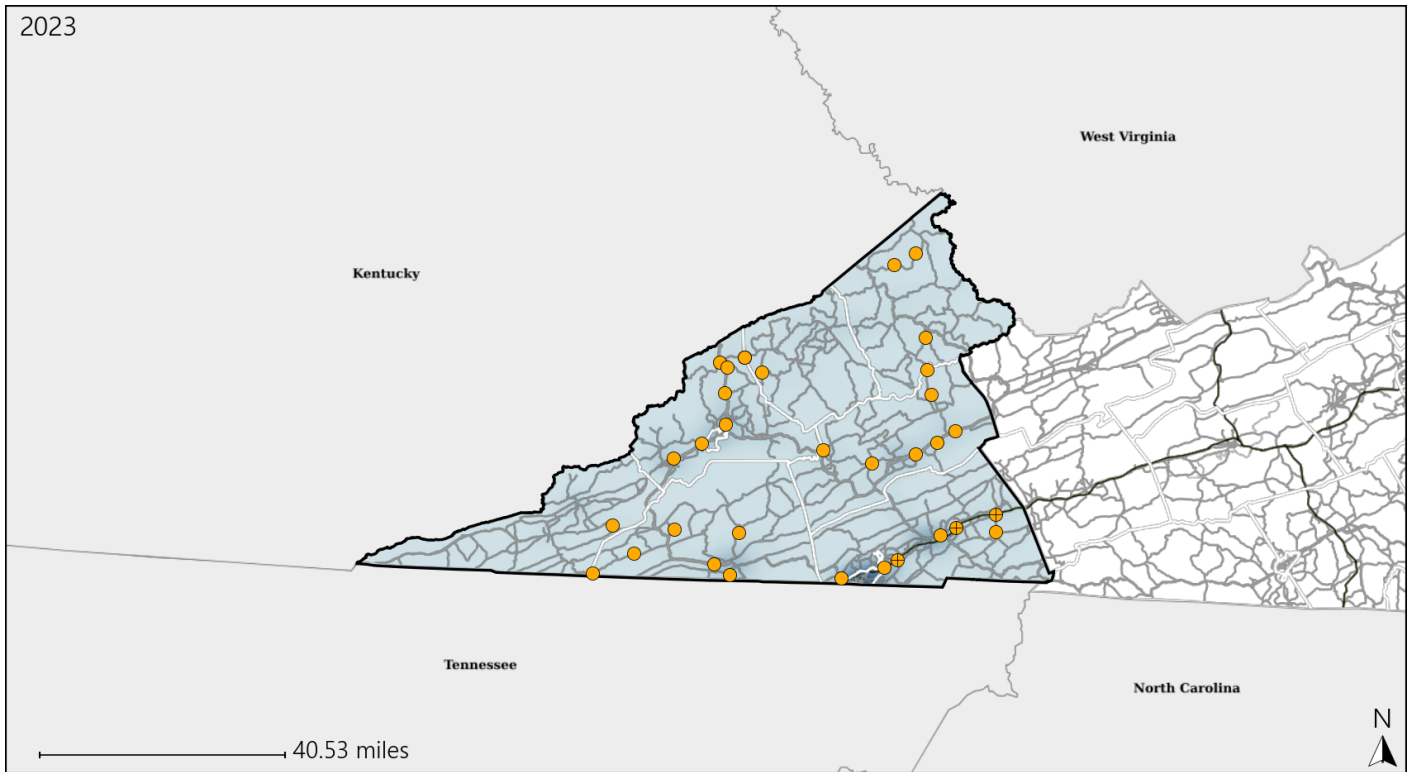


Available Crash Data - Calendar Year (CY)	CY 2020	CY 2021	CY 2022	CY 2023
Total Crashes	2993	3154	3195	3363
Fatal Crashes	37	26	33	40
Injury Crashes	887	970	1013	1082
Pedestrian-Related Fatal Crashes	1	2	4	6
Percent of Pedestrian-Related Fatal Crashes to Total Fatal Crashes	3%	8%	12%	15%
Pedestrian-Related Injury Crashes	10	16	10	20
Percent of Pedestrian-Related Injury Crashes to Total Injury Crashes	1%	2%	1%	2%

Virginia Senate District 6 Distracted Driving Crash Statistics

Report Generated May, 2024

	Count	Highest Time Period(s)	Highest Day(s)	Highest Month(s)
Fatal Crashes	0	-	-	-
Resulting Fatalities	0	-	-	-
Serious Injury Crashes	33	3:00pm - 5:59pm 9:00am - 11:59am (42%)	Wednesday (21%)	November (18%)



Senate District 6 Distracted Driving-Related Crashes

- | | |
|--------------------|------------------------|
| Interstate Crashes | Non-interstate Crashes |
| ● Fatal | ● Fatal |
| ⊕ Serious Injury | ● Serious Injury |

The blue gradient represents the density of all distracted driving-related crashes.



Available Crash Data - Calendar Year (CY)	CY 2020	CY 2021	CY 2022	CY 2023
Total Crashes	2993	3154	3195	3363
Fatal Crashes	37	26	33	40
Injury Crashes	887	970	1013	1082
Distracted Driving-Related Fatal Crashes	1	5	2	0
Percent of Distracted Driving-Related Fatal Crashes to Total Fatal Crashes	3%	19%	6%	0%
Distracted Driving-Related Injury Crashes	150	174	169	168
Percent of Distracted Driving-Related Injury Crashes to Total Injury Crashes	17%	18%	17%	16%