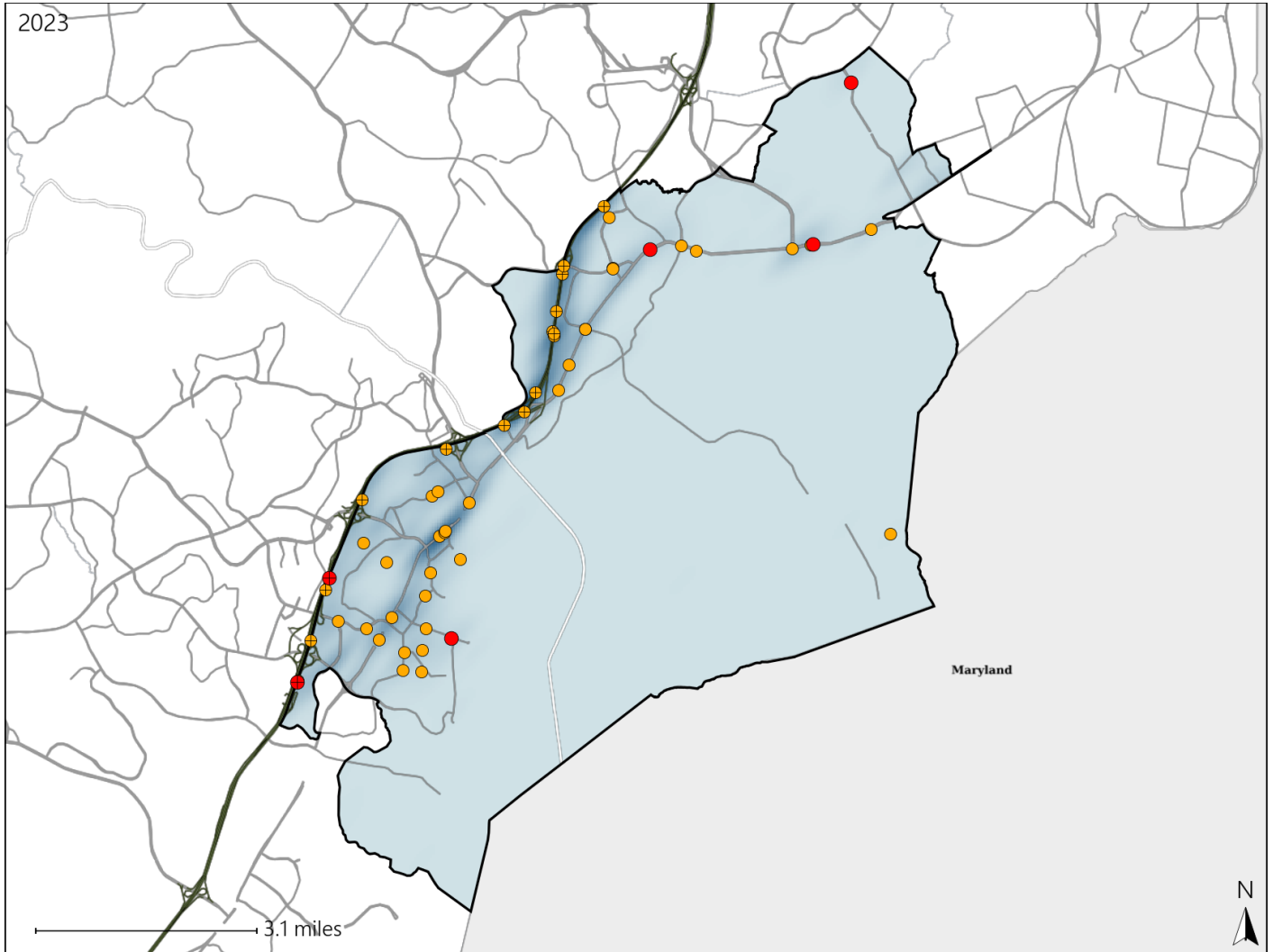


# Virginia House District 19 Crash Statistics

Report Generated May, 2024

	Count	Highest Time Period(s)	Highest Day(s)	Highest Month(s)
<b>Fatal Crashes</b>	<b>6</b>	3:00am - 5:59am	Wednesday	April
<b>Resulting Fatalities</b>	<b>6</b>	3:00pm - 5:59pm (34%)	(33%)	(33%)
<b>Serious Injury Crashes</b>	<b>50</b>	6:00pm - 8:59pm (28%)	Wednesday (26%)	September (16%)



## House District 19 Crashes

Interstate Crashes

- Fatal
- Serious Injury

Non-interstate Crashes

- Fatal
- Serious Injury

The blue gradient represents the density of all crashes.

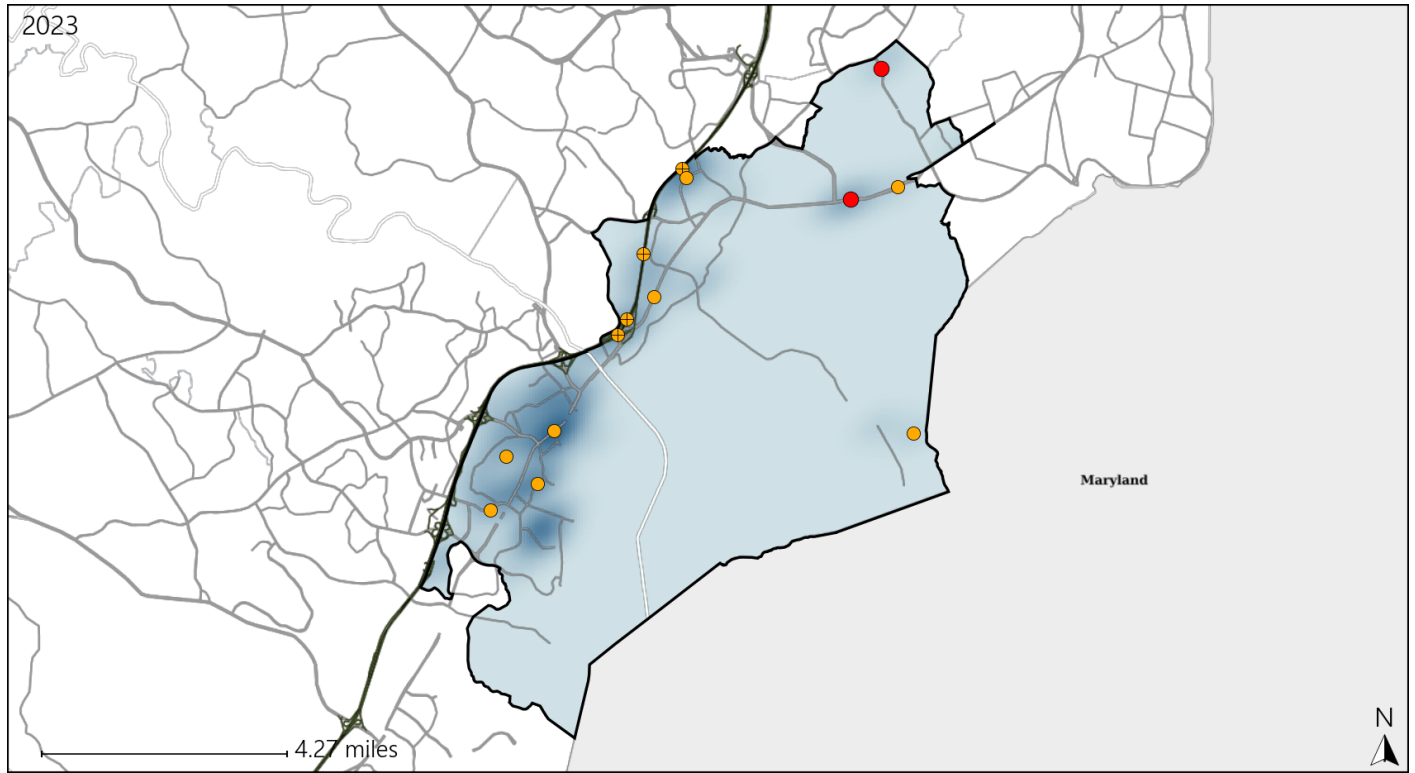


Available Crash Data - Calendar Year (CY)	CY 2020	CY 2021	CY 2022	CY 2023
Total Crashes	949	1196	1205	1299
Fatal Crashes	7	5	8	6
Injury Crashes	256	361	342	398

# Virginia House District 19 Alcohol Crash Statistics

Report Generated May, 2024

	Count	Highest Time Period(s)	Highest Day(s)	Highest Month(s)
<b>Fatal Crashes</b>	<b>2</b>	3:00am - 5:59am	Friday • Monday	April • July
<b>Resulting Fatalities</b>	<b>2</b>	9:00pm - 11:59pm (100%)	(100%)	(100%)
<b>Serious Injury Crashes</b>	<b>12</b>	6:00pm - 8:59pm	Sunday	September
		9:00pm - 11:59pm (50%)	(42%)	(25%)



### House District 19 Alcohol-Related Crashes

Interstate Crashes                      Non-interstate Crashes  
 ● Fatal                                      ● Fatal  
 ⊕ Serious Injury                          ⊕ Serious Injury

The blue gradient represents the density of all alcohol-related crashes.

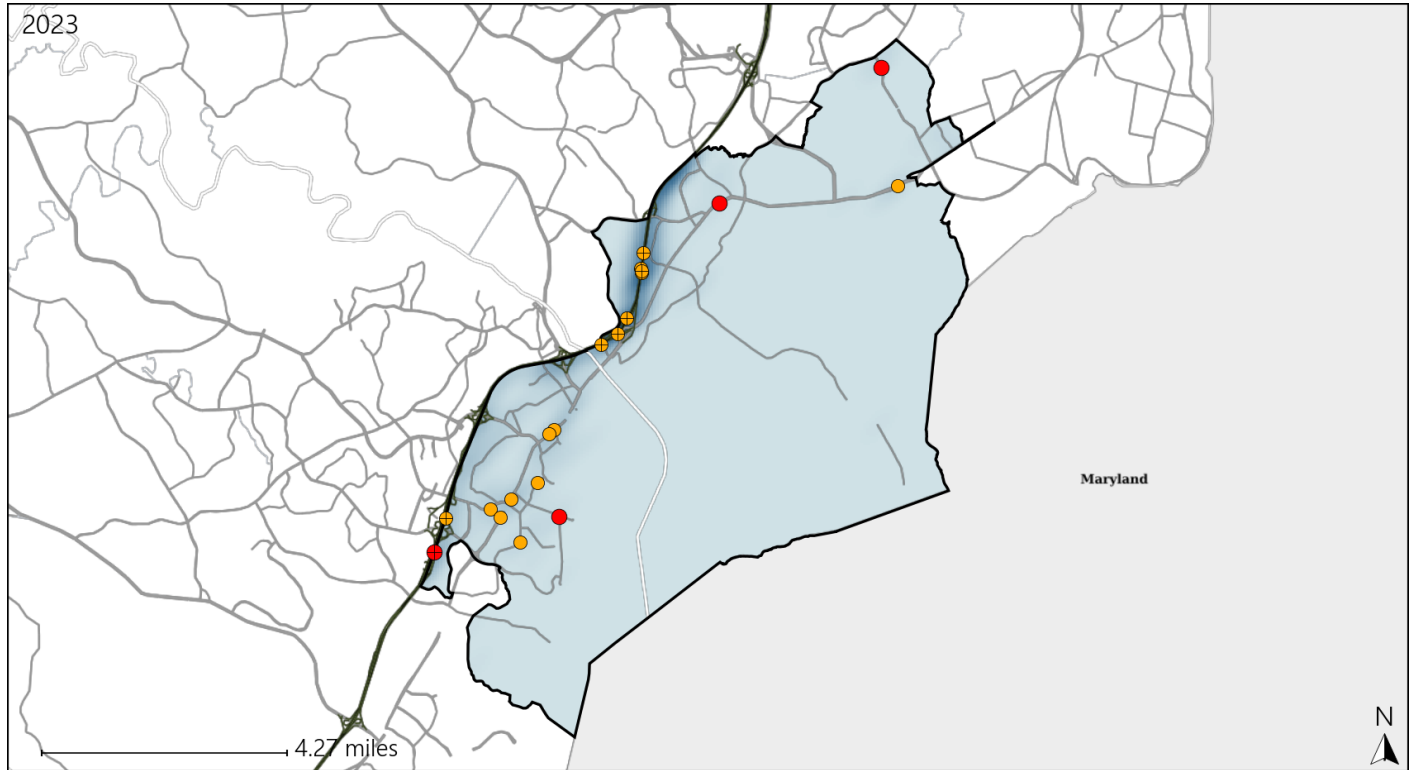


Available Crash Data - Calendar Year (CY)	CY 2020	CY 2021	CY 2022	CY 2023
Total Crashes	949	1196	1205	1299
Fatal Crashes	7	5	8	6
Injury Crashes	256	361	342	398
Alcohol-Related Fatal Crashes	4	3	2	2
Percent of Alcohol-Related Fatal Crashes to Total Fatal Crashes	57%	60%	25%	33%
Alcohol-Related Injury Crashes	23	40	25	33
Percent of Alcohol-Related Injury Crashes to Total Injury Crashes	9%	11%	7%	8%

# Virginia House District 19 Speed Crash Statistics

Report Generated May, 2024

	Count	Highest Time Period(s)	Highest Day(s)	Highest Month(s)
<b>Fatal Crashes</b>	<b>4</b>	<b>3:00pm - 5:59pm</b>	<b>Monday • Saturday</b>	<b>April • July</b>
<b>Resulting Fatalities</b>	<b>4</b>	<b>6:00am - 8:59am</b> (50%)	<b>(50%)</b>	<b>(50%)</b>
<b>Serious Injury Crashes</b>	<b>17</b>	<b>Midnight - 2:59am</b> (24%)	<b>Saturday • Sunday</b> (48%)	<b>October • September</b> (36%)



### House District 19 Speed-Related Crashes

Interstate Crashes

Non-interstate Crashes

- Fatal
- Serious Injury

- Fatal
- Serious Injury

The blue gradient represents the density of all speed-related crashes.

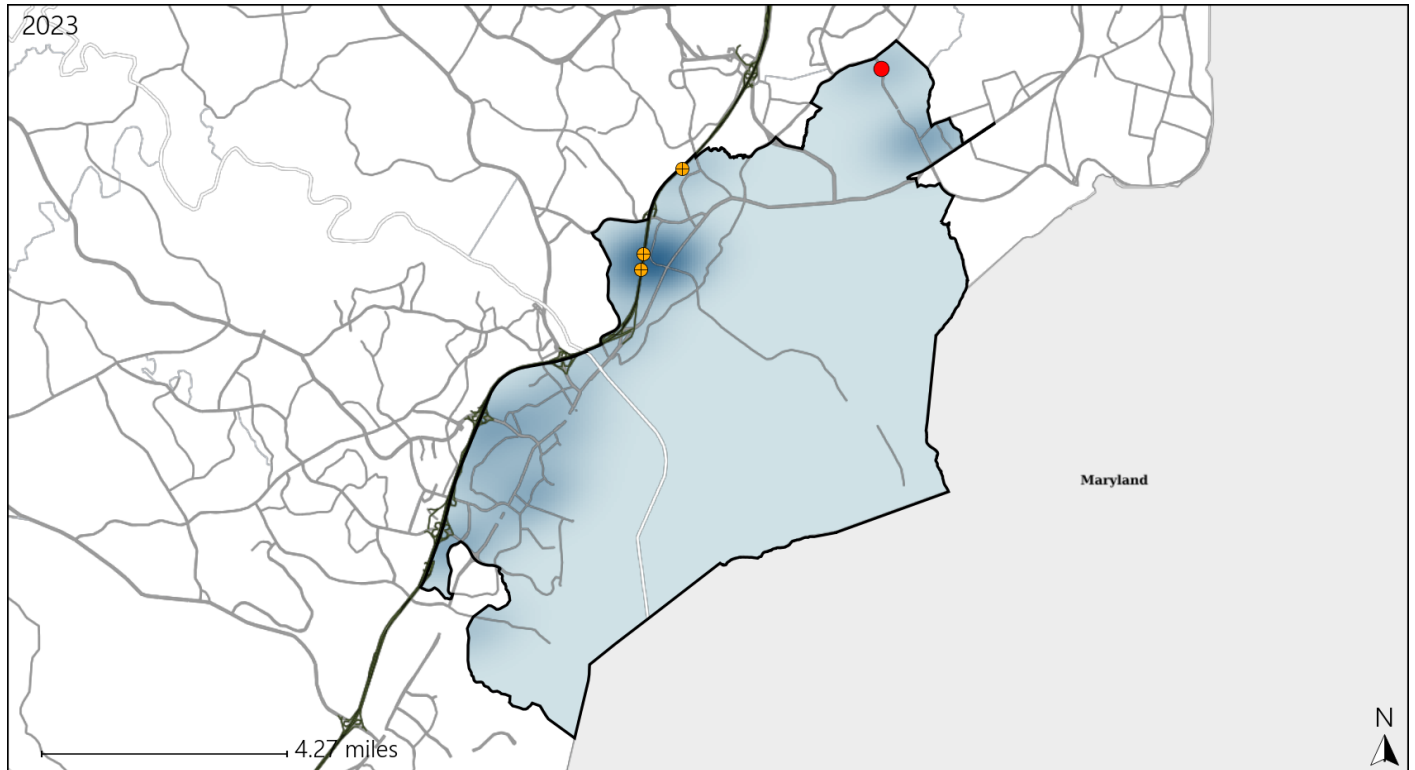


Available Crash Data - Calendar Year (CY)	CY 2020	CY 2021	CY 2022	CY 2023
Total Crashes	949	1196	1205	1299
Fatal Crashes	7	5	8	6
Injury Crashes	256	361	342	398
Speed-Related Fatal Crashes	5	2	3	4
Percent of Speed-Related Fatal Crashes to Total Fatal Crashes	71%	40%	38%	67%
Speed-Related Injury Crashes	82	126	113	114
Percent of Speed-Related Injury Crashes to Total Injury Crashes	32%	35%	33%	29%

# Virginia House District 19 Unrestrained Crash Statistics

Report Generated May, 2024

	Count	Highest Time Period(s)	Highest Day(s)	Highest Month(s)
<b>Fatal Crashes</b>	<b>1</b>	<b>9:00pm - 11:59pm</b>	<b>Monday</b>	<b>July</b>
<b>Unrestrained Fatalities</b>	<b>1</b>	(100%)	(100%)	(100%)
<b>Serious Injury Crashes</b>	<b>3</b>	<b>Midnight - 2:59am</b>	<b>Sunday</b>	<b>August • December</b>
		(67%)	(67%)	(66%)



## House District 19 Unrestrained-Related Crashes

Interstate Crashes

Non-interstate Crashes

- Fatal
- Serious Injury

- Fatal
- Serious Injury

The blue gradient represents the density of all unrestrained-related crashes.

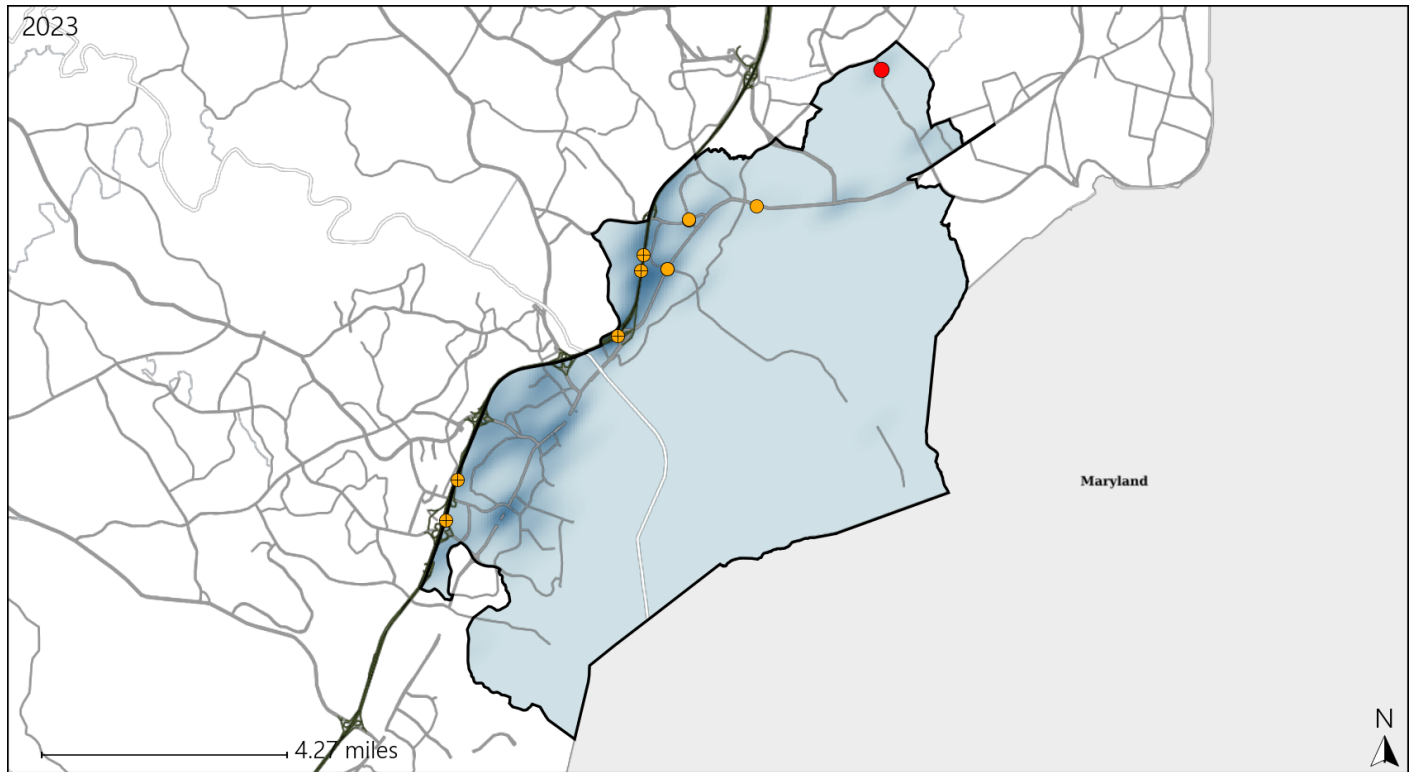


Available Crash Data - Calendar Year (CY)	CY 2020	CY 2021	CY 2022	CY 2023
<b>Total Crashes</b>	<b>949</b>	<b>1196</b>	<b>1205</b>	<b>1299</b>
<b>Fatalities</b>	<b>7</b>	<b>5</b>	<b>8</b>	<b>6</b>
<b>Injuries</b>	<b>445</b>	<b>645</b>	<b>550</b>	<b>640</b>
<b>Unrestrained Fatalities</b>	<b>3</b>	<b>0</b>	<b>2</b>	<b>1</b>
<b>Percent of Unrestrained Fatalities to Total Fatalities</b>	<b>43%</b>	<b>0%</b>	<b>25%</b>	<b>17%</b>
<b>Unrestrained Injuries</b>	<b>16</b>	<b>29</b>	<b>17</b>	<b>24</b>
<b>Percent of Unrestrained Injuries to Total Injuries</b>	<b>4%</b>	<b>4%</b>	<b>3%</b>	<b>4%</b>

# Virginia House District 19 Distracted Driving Crash Statistics

Report Generated May, 2024

	Count	Highest Time Period(s)	Highest Day(s)	Highest Month(s)
<b>Fatal Crashes</b>	<b>1</b>	<b>9:00pm - 11:59pm</b>	<b>Monday</b>	<b>July</b>
<b>Resulting Fatalities</b>	<b>1</b>	(100%)	(100%)	(100%)
<b>Serious Injury Crashes</b>	<b>10</b>	<b>3:00pm - 5:59pm</b> <b>Noon - 2:59pm</b>	<b>Wednesday</b>	<b>August • September</b>
		(60%)	(40%)	(60%)



## House District 19 Distracted Driving-Related Crashes

- |  |  |
|--|--|
| Interstate Crashes                                   | Non-interstate Crashes                               |
| <span style="color: red;">●</span> Fatal             | <span style="color: red;">●</span> Fatal             |
| <span style="color: orange;">⊕</span> Serious Injury | <span style="color: orange;">⊕</span> Serious Injury |

The blue gradient represents the density of all distracted driving-related crashes.



Available Crash Data - Calendar Year (CY)	CY 2020	CY 2021	CY 2022	CY 2023
Total Crashes	949	1196	1205	1299
Fatal Crashes	7	5	8	6
Injury Crashes	256	361	342	398
Distracted Driving-Related Fatal Crashes	1	0	0	1
Percent of Distracted Driving-Related Fatal Crashes to Total Fatal Crashes	14%	0%	0%	17%
Distracted Driving-Related Injury Crashes	55	98	55	76
Percent of Distracted Driving-Related Injury Crashes to Total Injury Crashes	21%	27%	16%	19%