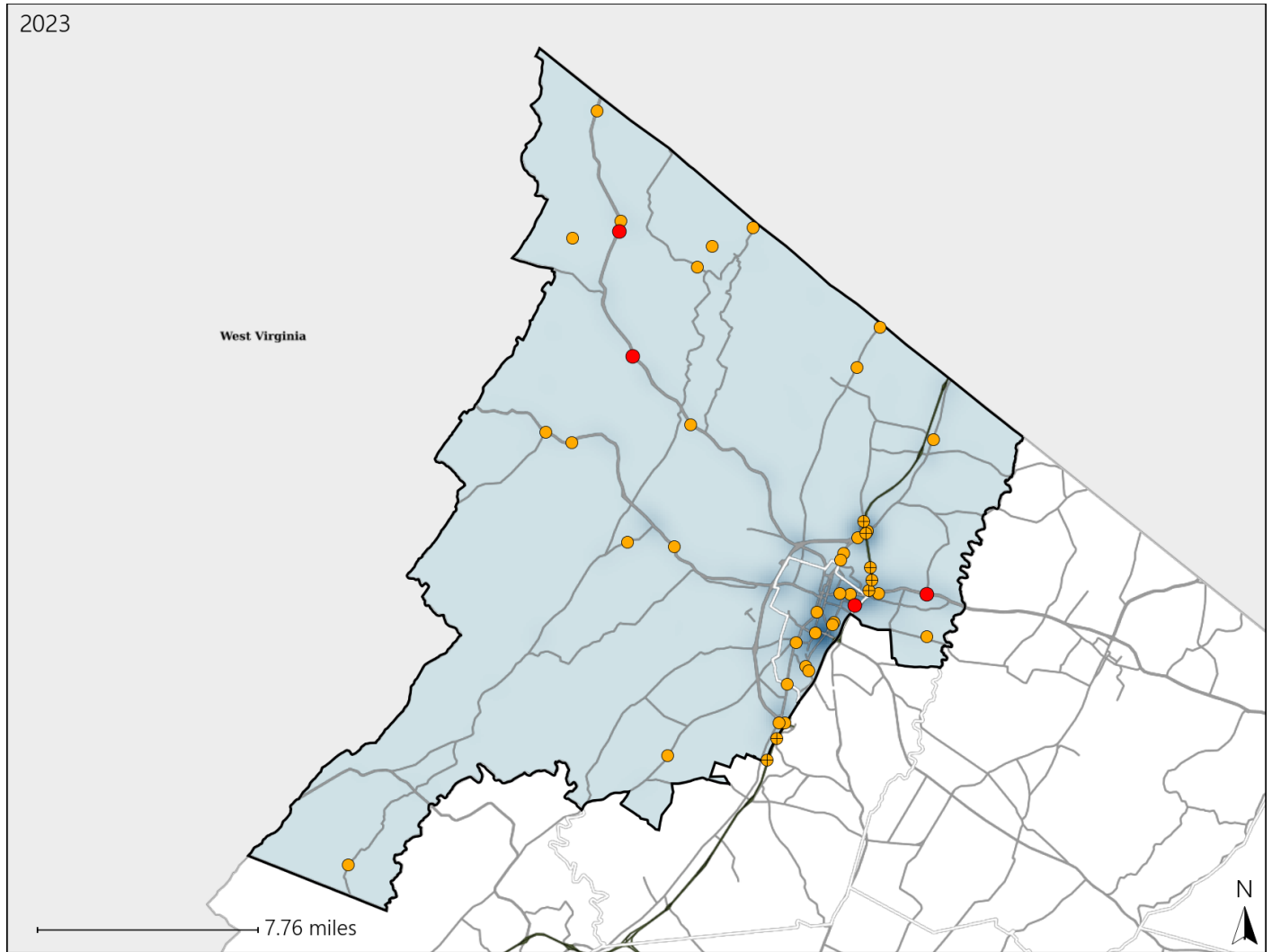


Virginia House District 32 Crash Statistics

Report Generated May, 2024

	Count	Highest Time Period(s)	Highest Day(s)	Highest Month(s)
Fatal Crashes	4	6:00pm - 8:59pm	Thursday	April • January
Resulting Fatalities	4	(50%)	(50%)	(50%)
Serious Injury Crashes	41	3:00pm - 5:59pm	Saturday	November • September
		(22%)	(22%)	(40%)



House District 32 Crashes

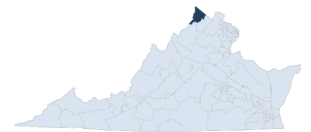
Interstate Crashes

- Fatal
- Serious Injury

Non-interstate Crashes

- Fatal
- Serious Injury

The blue gradient represents the density of all crashes.

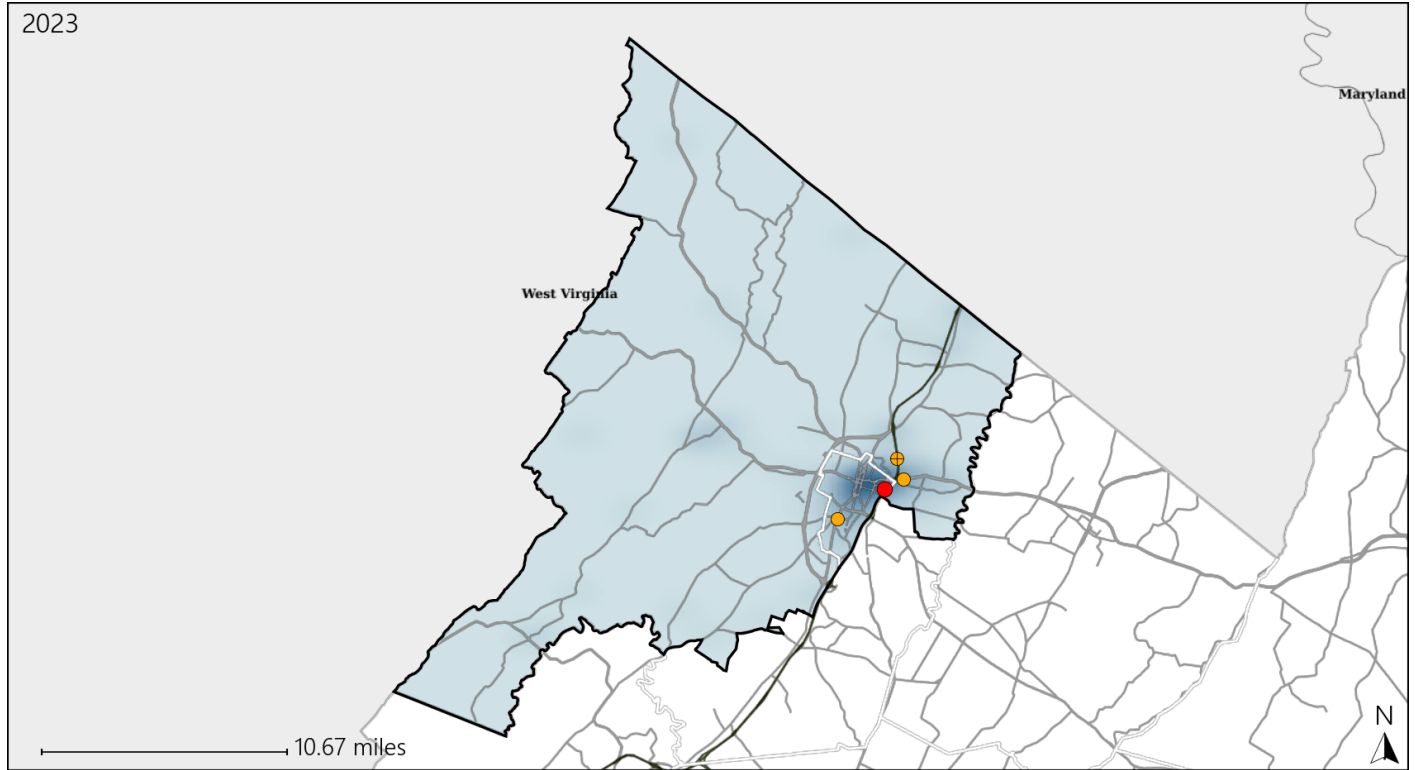


Available Crash Data - Calendar Year (CY)	CY 2020	CY 2021	CY 2022	CY 2023
Total Crashes	1157	1400	1411	1444
Fatal Crashes	9	9	7	4
Injury Crashes	258	304	281	316

Virginia House District 32 Alcohol Crash Statistics

Report Generated May, 2024

	Count	Highest Time Period(s)	Highest Day(s)	Highest Month(s)
Fatal Crashes	1	6:00pm - 8:59pm	Sunday	January
Resulting Fatalities	1	(100%)	(100%)	(100%)
Serious Injury Crashes	3	9:00pm - 11:59pm	Saturday • Thursday	January • March
		(67%)	(66%)	(66%)



House District 32 Alcohol-Related Crashes

Interstate Crashes Non-interstate Crashes
 ● Fatal ● Fatal
 ● Serious Injury ● Serious Injury

The blue gradient represents the density of all alcohol-related crashes.

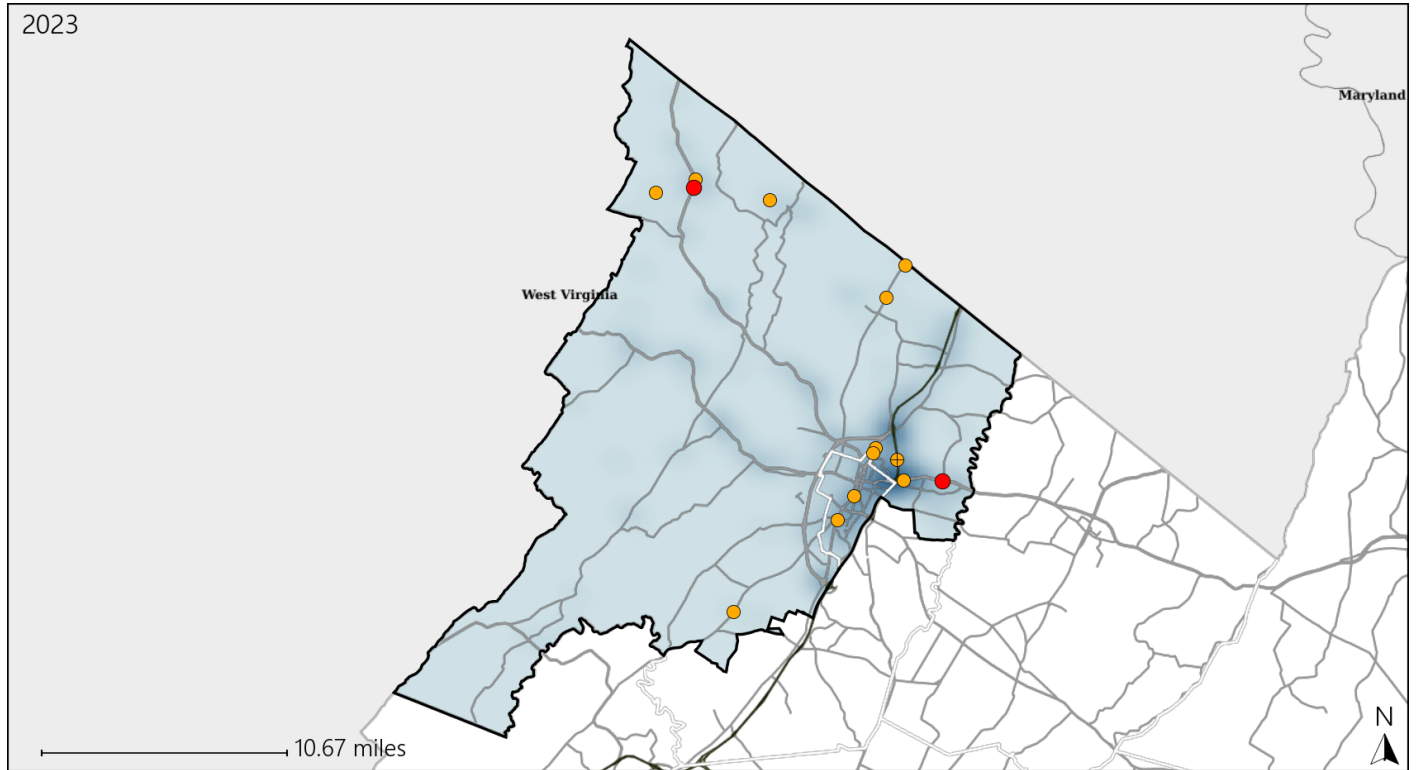


Available Crash Data - Calendar Year (CY)	CY 2020	CY 2021	CY 2022	CY 2023
Total Crashes	1157	1400	1411	1444
Fatal Crashes	9	9	7	4
Injury Crashes	258	304	281	316
Alcohol-Related Fatal Crashes	4	3	0	1
Percent of Alcohol-Related Fatal Crashes to Total Fatal Crashes	44%	33%	0%	25%
Alcohol-Related Injury Crashes	29	25	23	20
Percent of Alcohol-Related Injury Crashes to Total Injury Crashes	11%	8%	8%	6%

Virginia House District 32 Speed Crash Statistics

Report Generated May, 2024

	Count	Highest Time Period(s)	Highest Day(s)	Highest Month(s)
Fatal Crashes	2	6:00pm - 8:59pm	Thursday	April • July
Resulting Fatalities	2	9:00pm - 11:59pm (100%)	(100%)	(100%)
Serious Injury Crashes	12	3:00pm - 5:59pm (33%)	Saturday (50%)	November • September (50%)



House District 32 Speed-Related Crashes

Interstate Crashes

Non-interstate Crashes

- Fatal
- Serious Injury

- Fatal
- Serious Injury

The blue gradient represents the density of all speed-related crashes.

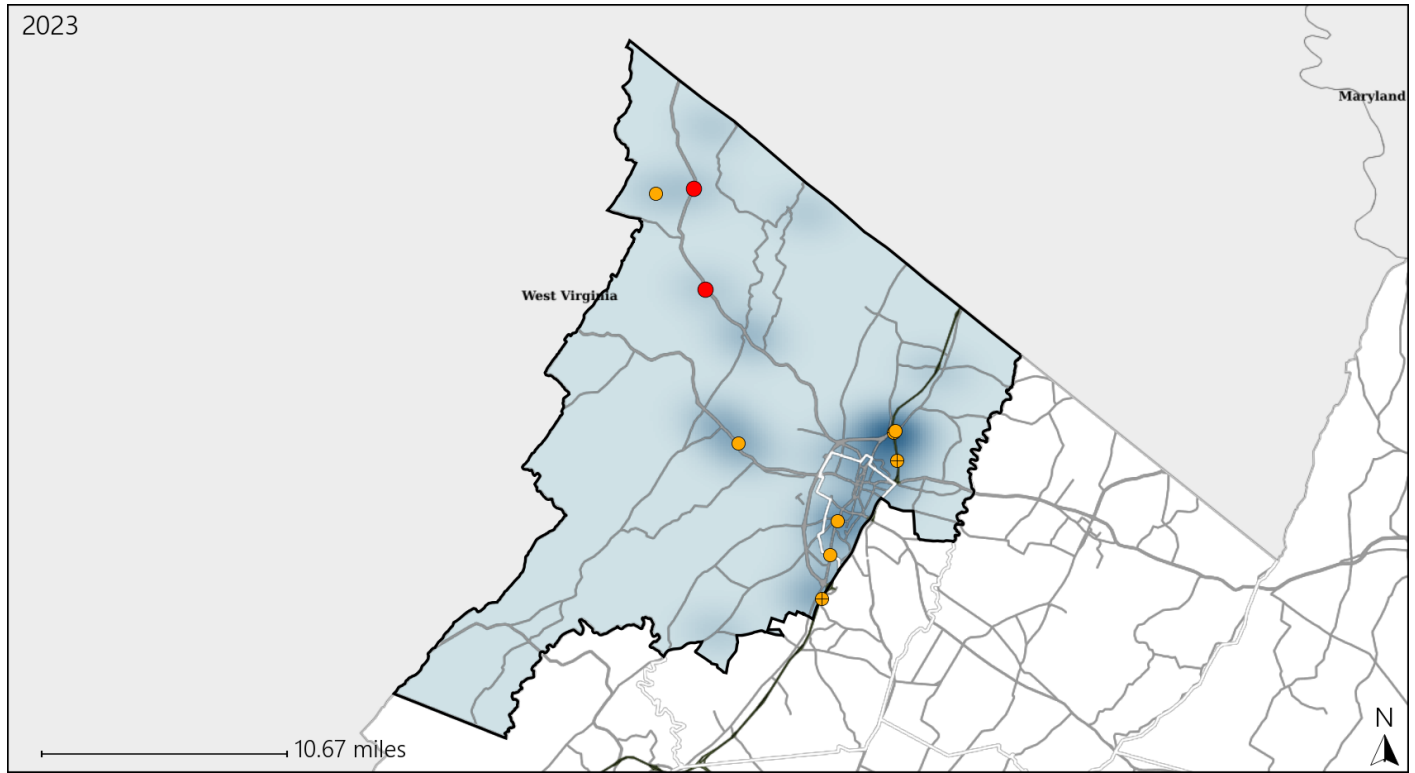


Available Crash Data - Calendar Year (CY)	CY 2020	CY 2021	CY 2022	CY 2023
Total Crashes	1157	1400	1411	1444
Fatal Crashes	9	9	7	4
Injury Crashes	258	304	281	316
Speed-Related Fatal Crashes	6	7	3	2
Percent of Speed-Related Fatal Crashes to Total Fatal Crashes	67%	78%	43%	50%
Speed-Related Injury Crashes	72	69	65	66
Percent of Speed-Related Injury Crashes to Total Injury Crashes	28%	23%	23%	21%

Virginia House District 32 Unrestrained Crash Statistics

Report Generated May, 2024

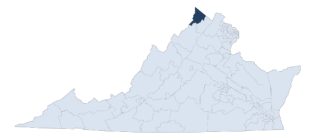
	Count	Highest Time Period(s)	Highest Day(s)	Highest Month(s)
Fatal Crashes	2	3:00pm - 5:59pm	Friday • Thursday	April • June
Unrestrained Fatalities	2	6:00pm - 8:59pm (100%)	(100%)	(100%)
Serious Injury Crashes	8	3:00pm - 5:59pm 9:00pm - 11:59pm (50%)	Saturday (38%)	September (25%)



House District 32 Unrestrained-Related Crashes

- Interstate Crashes
- Non-interstate Crashes
- Fatal
- Fatal
- ⊕ Serious Injury
- ⊕ Serious Injury

The blue gradient represents the density of all unrestrained-related crashes.

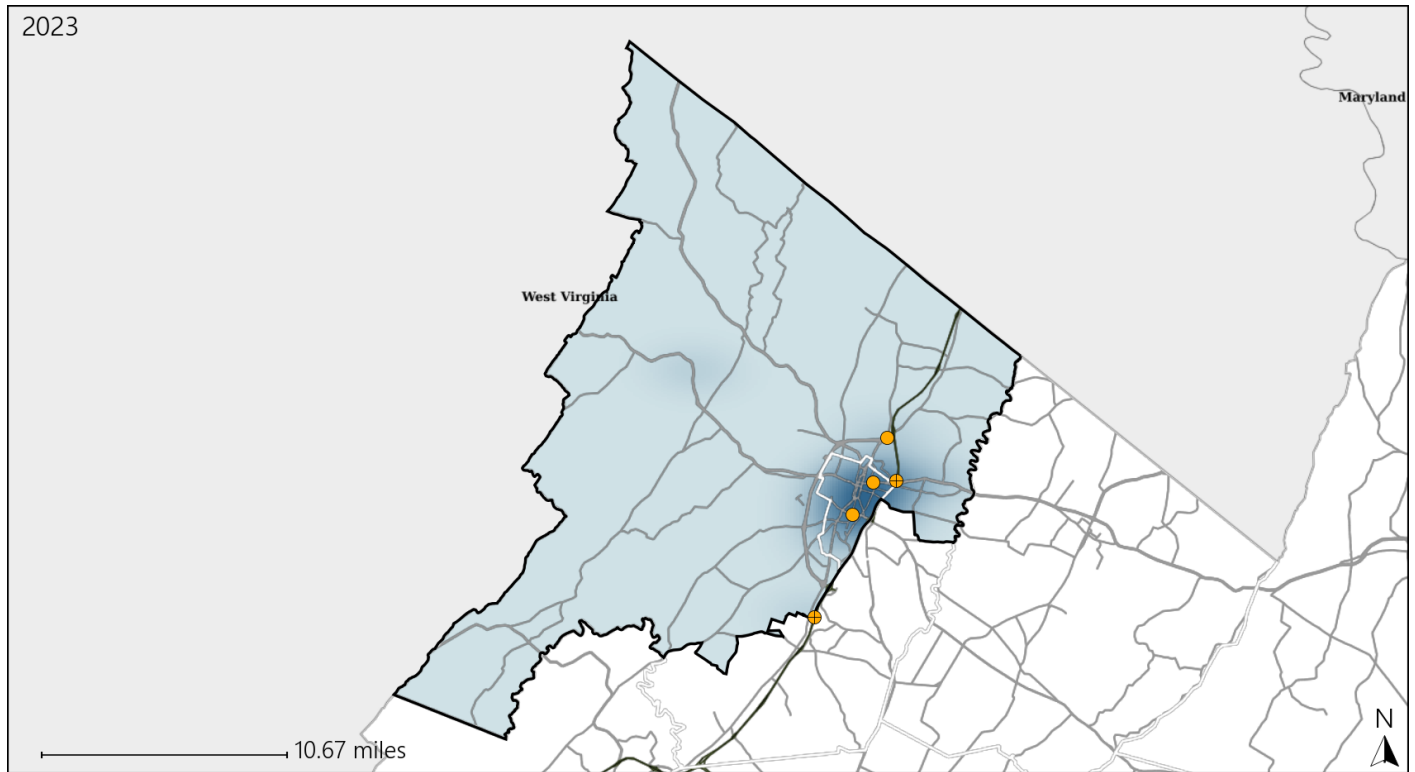


Available Crash Data - Calendar Year (CY)	CY 2020	CY 2021	CY 2022	CY 2023
Total Crashes	1157	1400	1411	1444
Fatalities	9	9	9	4
Injuries	372	451	420	497
Unrestrained Fatalities	4	2	3	2
Percent of Unrestrained Fatalities to Total Fatalities	44%	22%	33%	50%
Unrestrained Injuries	29	27	43	36
Percent of Unrestrained Injuries to Total Injuries	8%	6%	10%	7%

Virginia House District 32 Pedestrian Crash Statistics

Report Generated May, 2024

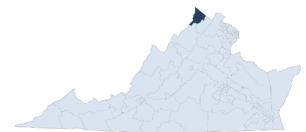
	Count	Highest Time Period(s)	Highest Day(s)	Highest Month(s)
Fatal Crashes	0	-	-	-
Pedestrian Fatalities	0	-	-	-
Serious Injury Crashes	5	3:00am - 5:59am 9:00am - 11:59am (80%)	Tuesday (40%)	September (40%)



House District 32 Pedestrian-Related Crashes

- | | |
|--------------------|------------------------|
| Interstate Crashes | Non-interstate Crashes |
| ● Fatal | ● Fatal |
| ⊕ Serious Injury | ⊕ Serious Injury |

The blue gradient represents the density of all pedestrian-related crashes.

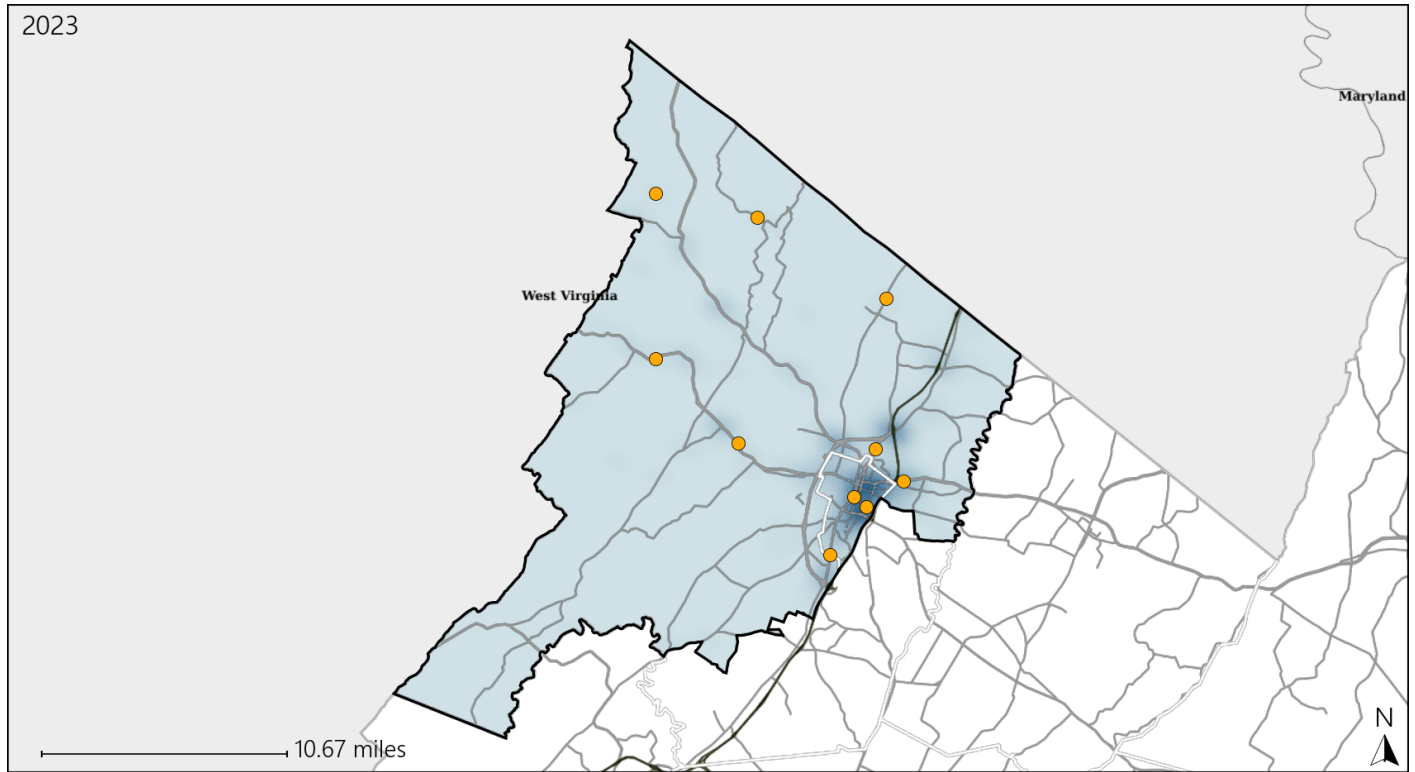


Available Crash Data - Calendar Year (CY)	CY 2020	CY 2021	CY 2022	CY 2023
Total Crashes	1157	1400	1411	1444
Fatal Crashes	9	9	7	4
Injury Crashes	258	304	281	316
Pedestrian-Related Fatal Crashes	0	1	0	0
Percent of Pedestrian-Related Fatal Crashes to Total Fatal Crashes	0%	11%	0%	0%
Pedestrian-Related Injury Crashes	8	8	8	16
Percent of Pedestrian-Related Injury Crashes to Total Injury Crashes	3%	3%	3%	5%

Virginia House District 32 Distracted Driving Crash Statistics

Report Generated May, 2024

	Count	Highest Time Period(s)	Highest Day(s)	Highest Month(s)
Fatal Crashes	0	-	-	-
Resulting Fatalities	0	-	-	-
Serious Injury Crashes	10	3:00pm - 5:59pm (30%)	Saturday (30%)	September (30%)



House District 32 Distracted Driving-Related Crashes

- | | |
|--------------------|------------------------|
| Interstate Crashes | Non-interstate Crashes |
| Fatal | Fatal |
| Serious Injury | Serious Injury |

The blue gradient represents the density of all distracted driving-related crashes.



Available Crash Data - Calendar Year (CY)	CY 2020	CY 2021	CY 2022	CY 2023
Total Crashes	1157	1400	1411	1444
Fatal Crashes	9	9	7	4
Injury Crashes	258	304	281	316
Distracted Driving-Related Fatal Crashes	1	1	0	0
Percent of Distracted Driving-Related Fatal Crashes to Total Fatal Crashes	11%	11%	0%	0%
Distracted Driving-Related Injury Crashes	65	58	55	62
Percent of Distracted Driving-Related Injury Crashes to Total Injury Crashes	25%	19%	20%	20%