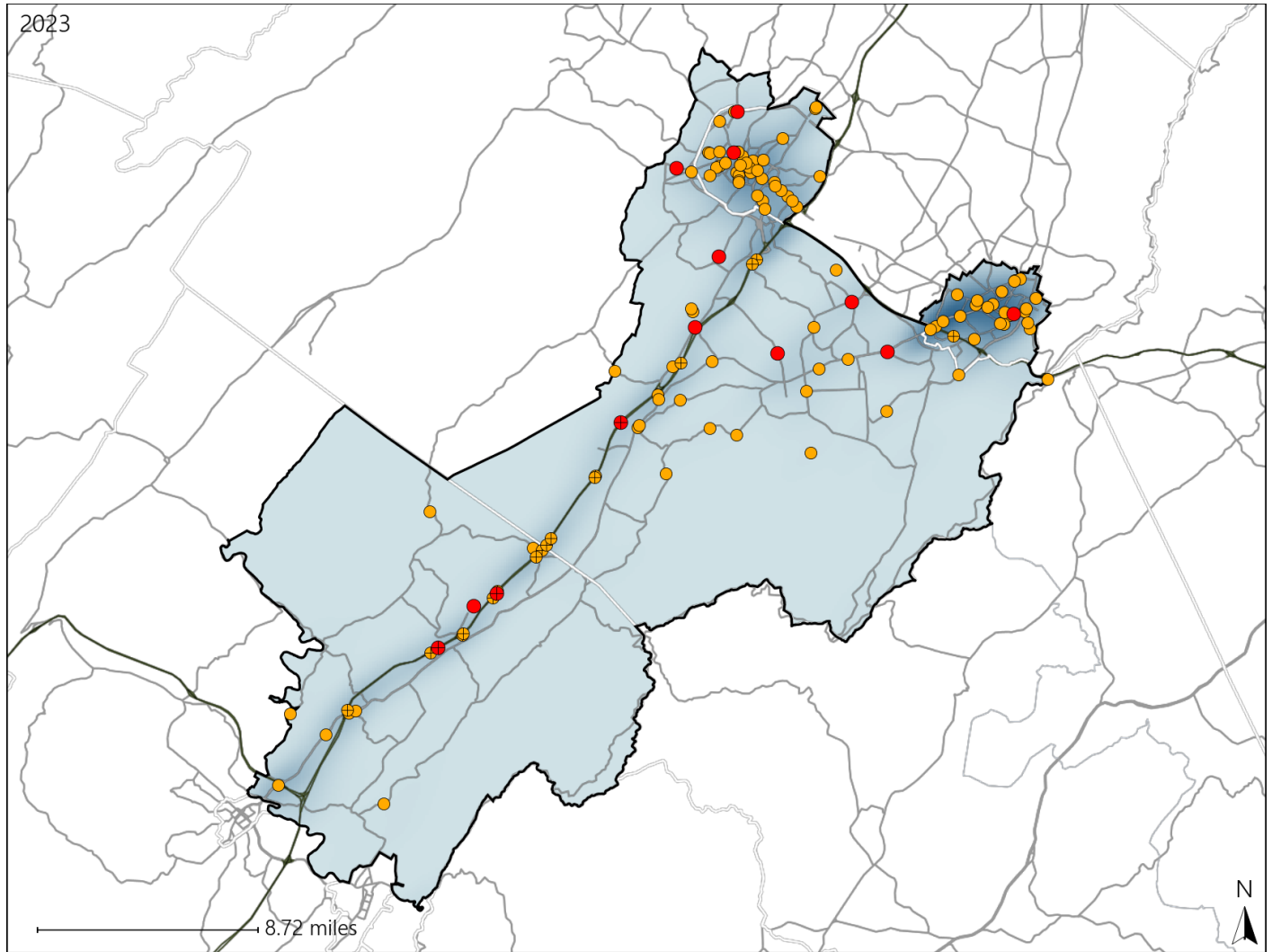


Virginia House District 36 Crash Statistics

Report Generated May, 2024

	Count	Highest Time Period(s)	Highest Day(s)	Highest Month(s)
Fatal Crashes	13	9:00pm - 11:59pm	Saturday • Sunday	February • January
Resulting Fatalities	15	(23%)	(46%)	(30%)
Serious Injury Crashes	107	3:00pm - 5:59pm	Saturday	February
		(21%)	(20%)	(15%)



House District 36 Crashes

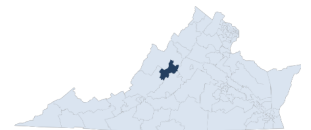
Interstate Crashes

- Fatal
- Serious Injury

Non-interstate Crashes

- Fatal
- Serious Injury

The blue gradient represents the density of all crashes.

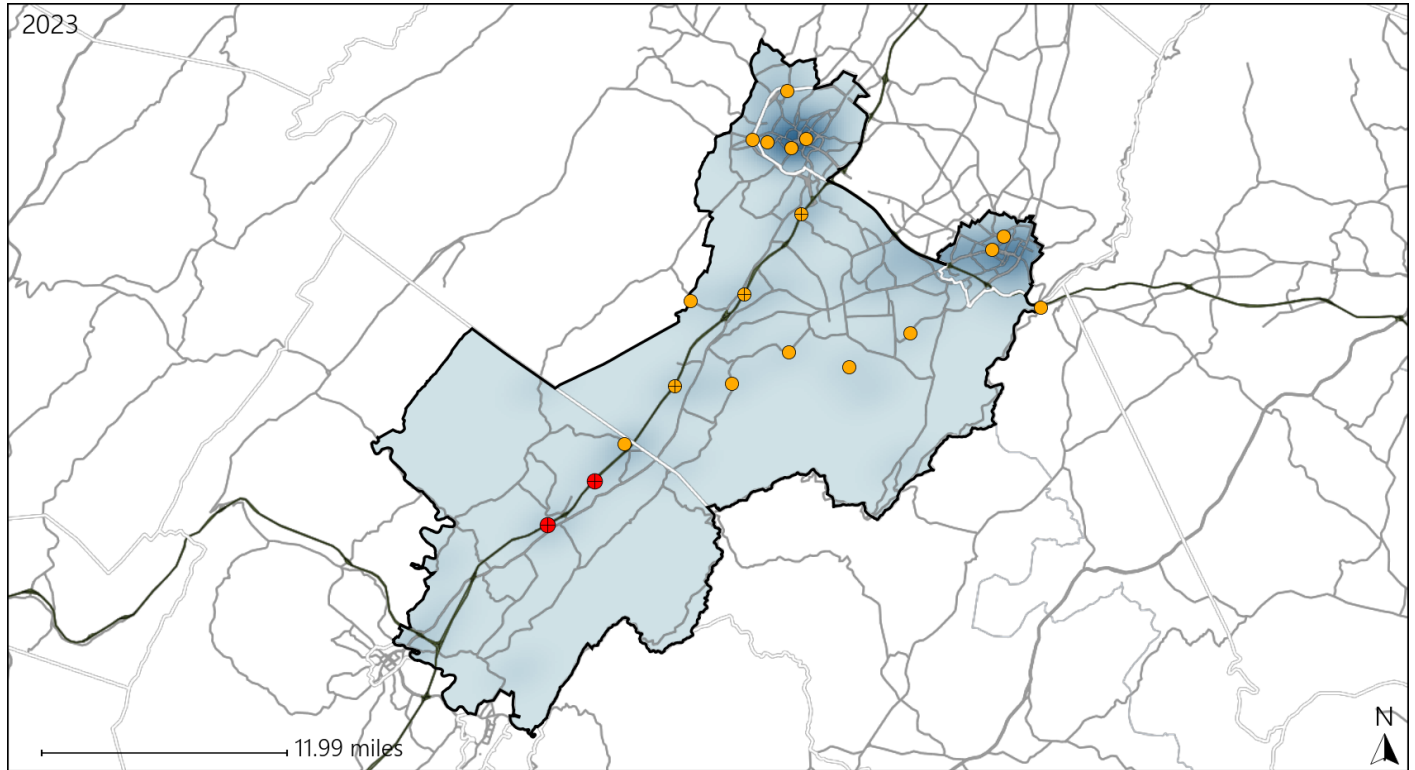


Available Crash Data - Calendar Year (CY)	CY 2020	CY 2021	CY 2022	CY 2023
Total Crashes	1321	1363	1681	1697
Fatal Crashes	9	13	14	13
Injury Crashes	486	460	553	522

Virginia House District 36 Alcohol Crash Statistics

Report Generated May, 2024

	Count	Highest Time Period(s)	Highest Day(s)	Highest Month(s)
Fatal Crashes	2	3:00pm - 5:59pm	Saturday	November + October
Resulting Fatalities	2	Midnight - 2:59am (100%)	(100%)	(100%)
Serious Injury Crashes	17	Midnight - 2:59am (35%)	Saturday (35%)	February (24%)



House District 36 Alcohol-Related Crashes

Interstate Crashes

Non-interstate Crashes

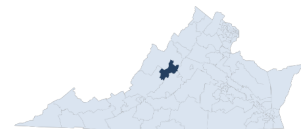
● Fatal

● Fatal

● Serious Injury

● Serious Injury

The blue gradient represents the density of all alcohol-related crashes.

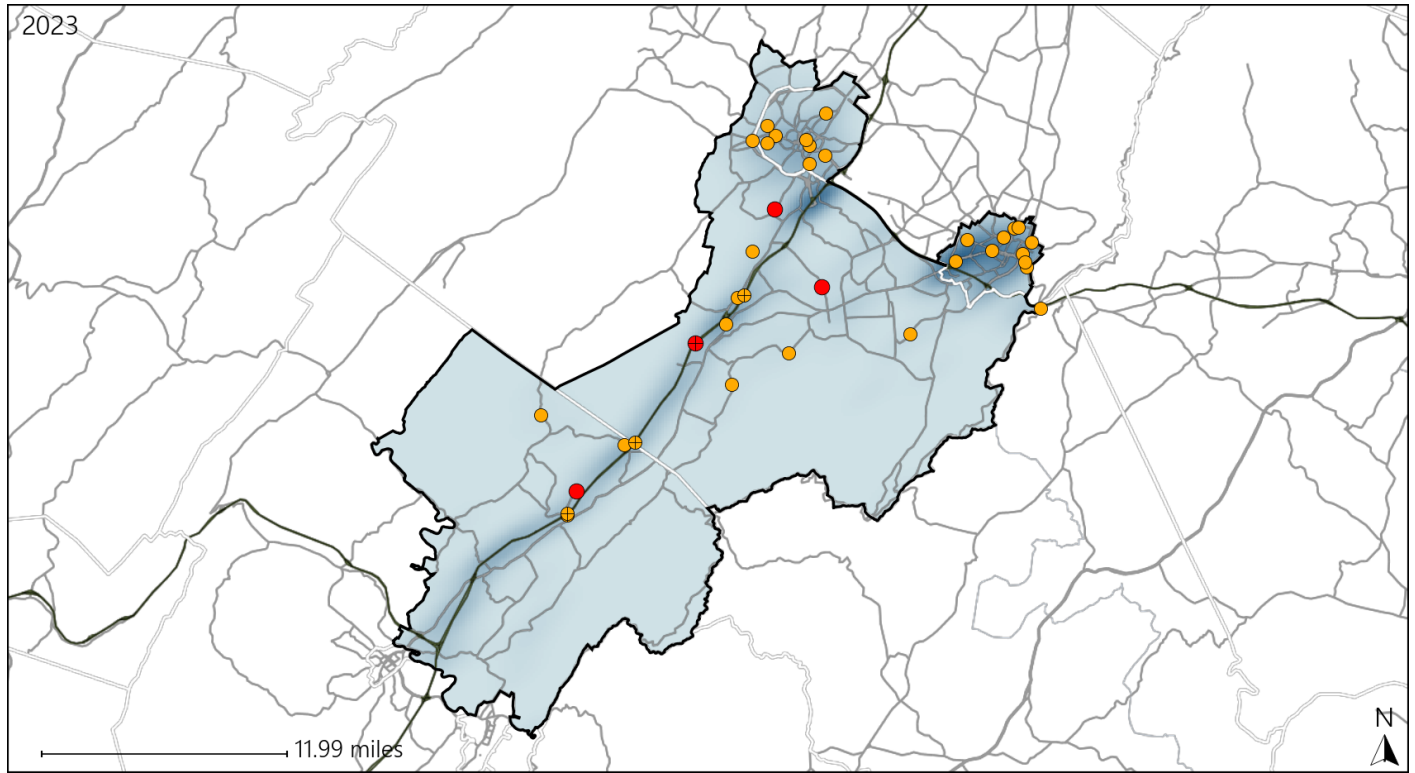


Available Crash Data - Calendar Year (CY)	CY 2020	CY 2021	CY 2022	CY 2023
Total Crashes	1321	1363	1681	1697
Fatal Crashes	9	13	14	13
Injury Crashes	486	460	553	522
Alcohol-Related Fatal Crashes	3	3	4	2
Percent of Alcohol-Related Fatal Crashes to Total Fatal Crashes	33%	23%	29%	15%
Alcohol-Related Injury Crashes	37	28	45	44
Percent of Alcohol-Related Injury Crashes to Total Injury Crashes	8%	6%	8%	8%

Virginia House District 36 Speed Crash Statistics

Report Generated May, 2024

	Count	Highest Time Period(s)	Highest Day(s)	Highest Month(s)
Fatal Crashes	4	3:00am - 5:59am	Sunday	January
Resulting Fatalities	6	6:00am - 8:59am (50%)	(50%)	(50%)
Serious Injury Crashes	32	6:00pm - 8:59pm Midnight - 2:59am (32%)	Saturday (34%)	August • December (24%)



House District 36 Speed-Related Crashes

Interstate Crashes Non-interstate Crashes
 ● Fatal ● Fatal
 ⊕ Serious Injury ⊕ Serious Injury

The blue gradient represents the density of all speed-related crashes.

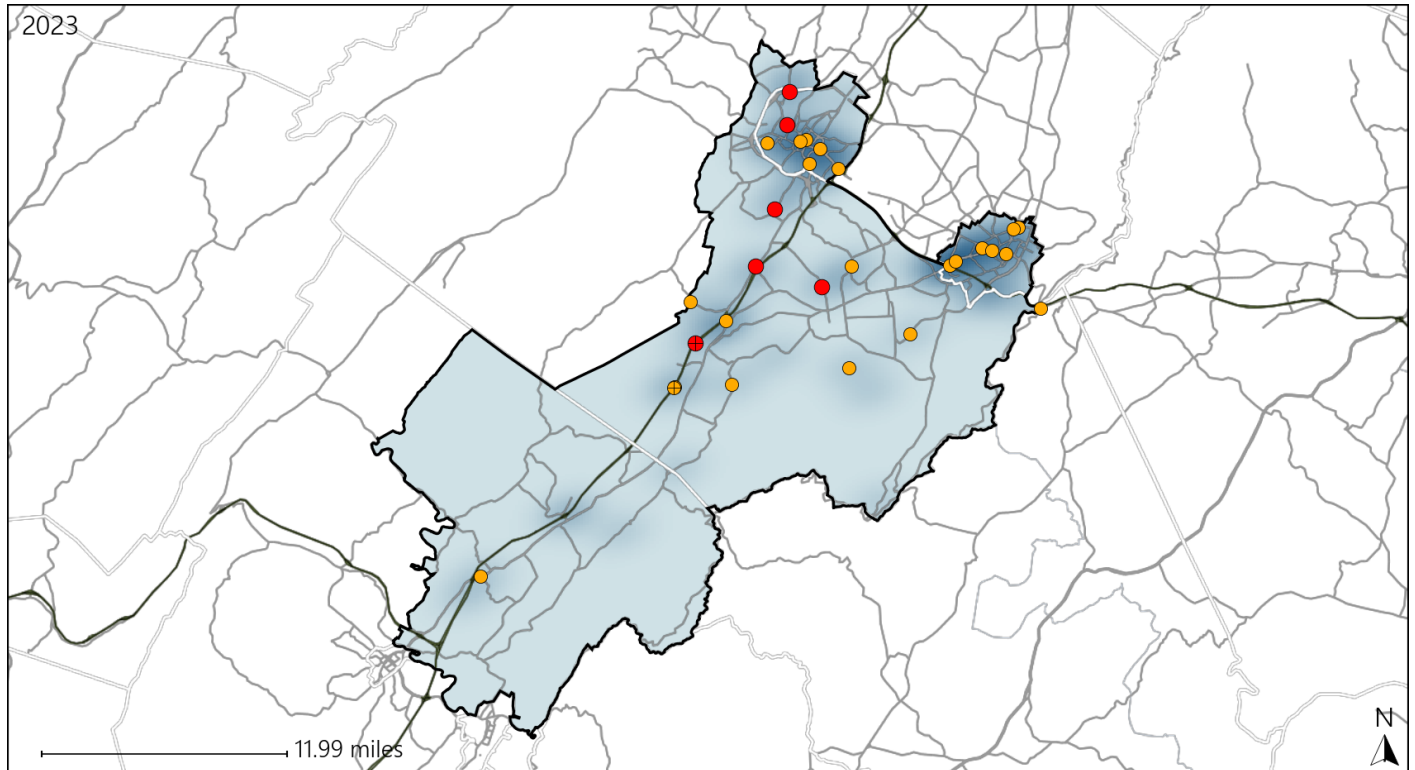


Available Crash Data - Calendar Year (CY)	CY 2020	CY 2021	CY 2022	CY 2023
Total Crashes	1321	1363	1681	1697
Fatal Crashes	9	13	14	13
Injury Crashes	486	460	553	522
Speed-Related Fatal Crashes	5	6	5	4
Percent of Speed-Related Fatal Crashes to Total Fatal Crashes	56%	46%	36%	31%
Speed-Related Injury Crashes	104	105	130	122
Percent of Speed-Related Injury Crashes to Total Injury Crashes	21%	23%	24%	23%

Virginia House District 36 Unrestrained Crash Statistics

Report Generated May, 2024

	Count	Highest Time Period(s)	Highest Day(s)	Highest Month(s)
Fatal Crashes	6	Noon - 2:59pm	Friday • Monday	January
Unrestrained Fatalities	6	(33%)	(34%)	(33%)
Serious Injury Crashes	24	3:00pm - 5:59pm	Saturday	February
		(29%)	(25%)	(29%)




House District 36 Unrestrained-Related Crashes


Interstate Crashes

Non-interstate Crashes

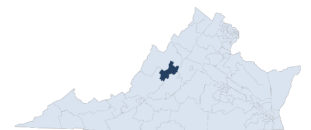
 Fatal

 Fatal

 Serious Injury

 Serious Injury

The blue gradient represents the density of all unrestrained-related crashes.

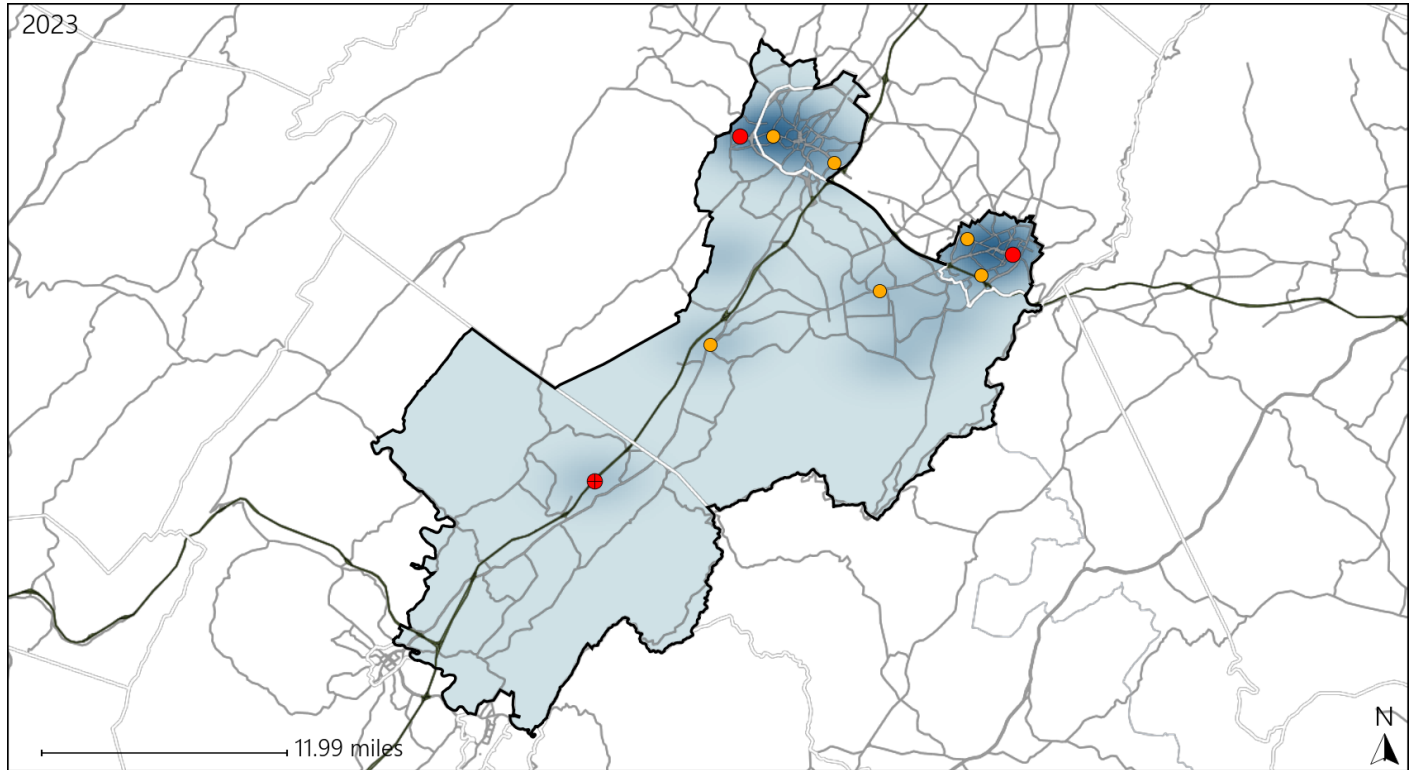


Available Crash Data - Calendar Year (CY)	CY 2020	CY 2021	CY 2022	CY 2023
Total Crashes	1321	1363	1681	1697
Fatalities	9	15	14	15
Injuries	737	646	785	717
Unrestrained Fatalities	4	10	5	6
Percent of Unrestrained Fatalities to Total Fatalities	44%	67%	36%	40%
Unrestrained Injuries	46	70	67	64
Percent of Unrestrained Injuries to Total Injuries	6%	11%	9%	9%

Virginia House District 36 Pedestrian Crash Statistics

Report Generated May, 2024

	Count	Highest Time Period(s)	Highest Day(s)	Highest Month(s)
Fatal Crashes	3	3:00pm - 5:59pm	Saturday • Sunday	February • May
Pedestrian Fatalities	3	6:00pm - 8:59pm (66%)	(66%)	(66%)
Serious Injury Crashes	6	6:00pm - 8:59pm (50%)	Tuesday (50%)	February (33%)



House District 36 Pedestrian-Related Crashes

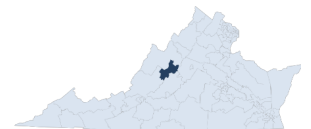
Interstate Crashes

Non-interstate Crashes

- Fatal
- Serious Injury

- Fatal
- Serious Injury

The blue gradient represents the density of all pedestrian-related crashes.

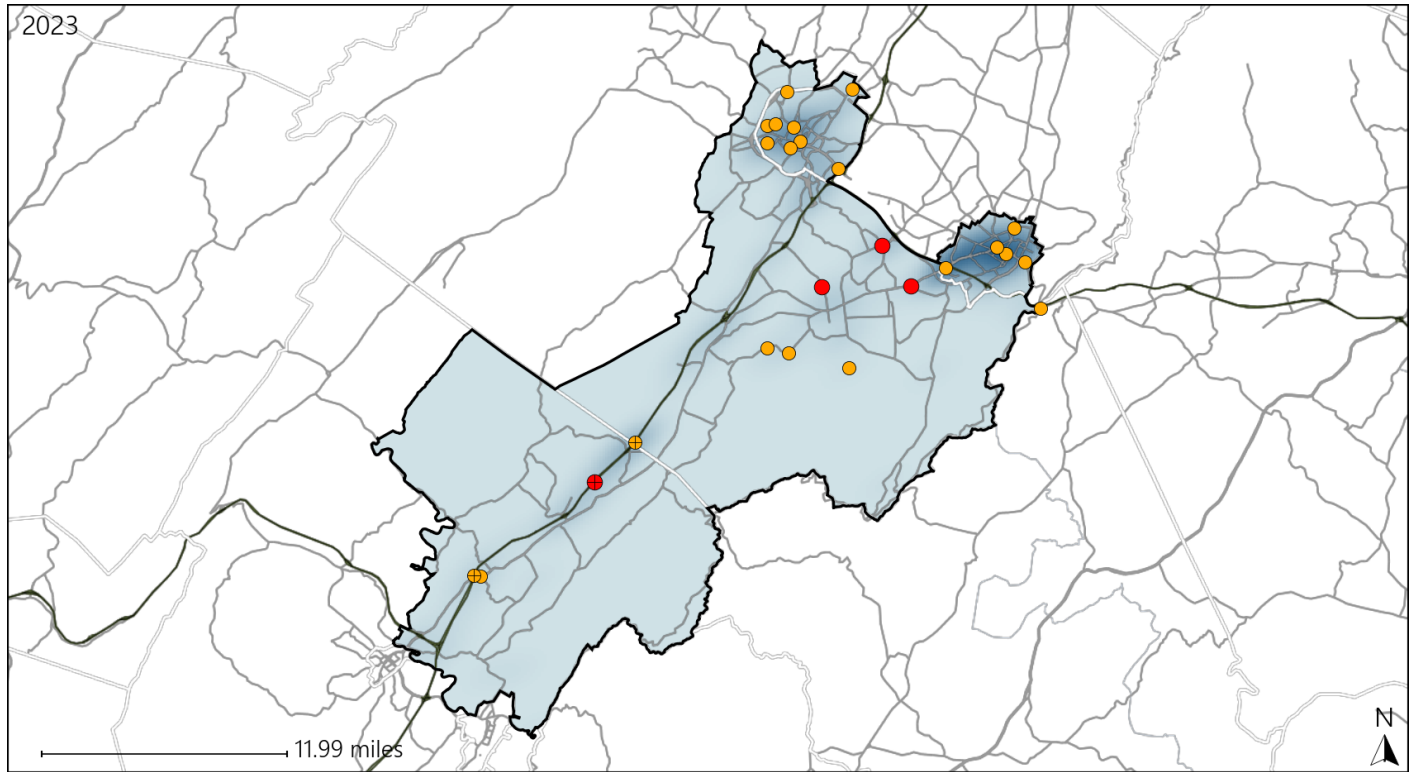


Available Crash Data - Calendar Year (CY)	CY 2020	CY 2021	CY 2022	CY 2023
Total Crashes	1321	1363	1681	1697
Fatal Crashes	9	13	14	13
Injury Crashes	486	460	553	522
Pedestrian-Related Fatal Crashes	0	2	2	3
Percent of Pedestrian-Related Fatal Crashes to Total Fatal Crashes	0%	15%	14%	23%
Pedestrian-Related Injury Crashes	10	7	11	14
Percent of Pedestrian-Related Injury Crashes to Total Injury Crashes	2%	2%	2%	3%

Virginia House District 36 Distracted Driving Crash Statistics

Report Generated May, 2024

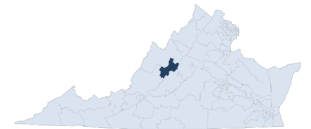
	Count	Highest Time Period(s)	Highest Day(s)	Highest Month(s)
Fatal Crashes	4	6:00am - 8:59am	Tuesday	October
Resulting Fatalities	4	(50%)	(50%)	(50%)
Serious Injury Crashes	21	3:00pm - 5:59pm	Thursday	October
		(24%)	(33%)	(19%)



House District 36 Distracted Driving-Related Crashes

- | | |
|--------------------|------------------------|
| Interstate Crashes | Non-interstate Crashes |
| Fatal | Fatal |
| Serious Injury | Serious Injury |

The blue gradient represents the density of all distracted driving-related crashes.



Available Crash Data - Calendar Year (CY)	CY 2020	CY 2021	CY 2022	CY 2023
Total Crashes	1321	1363	1681	1697
Fatal Crashes	9	13	14	13
Injury Crashes	486	460	553	522
Distracted Driving-Related Fatal Crashes	3	1	1	4
Percent of Distracted Driving-Related Fatal Crashes to Total Fatal Crashes	33%	8%	7%	31%
Distracted Driving-Related Injury Crashes	106	83	88	99
Percent of Distracted Driving-Related Injury Crashes to Total Injury Crashes	22%	18%	16%	19%