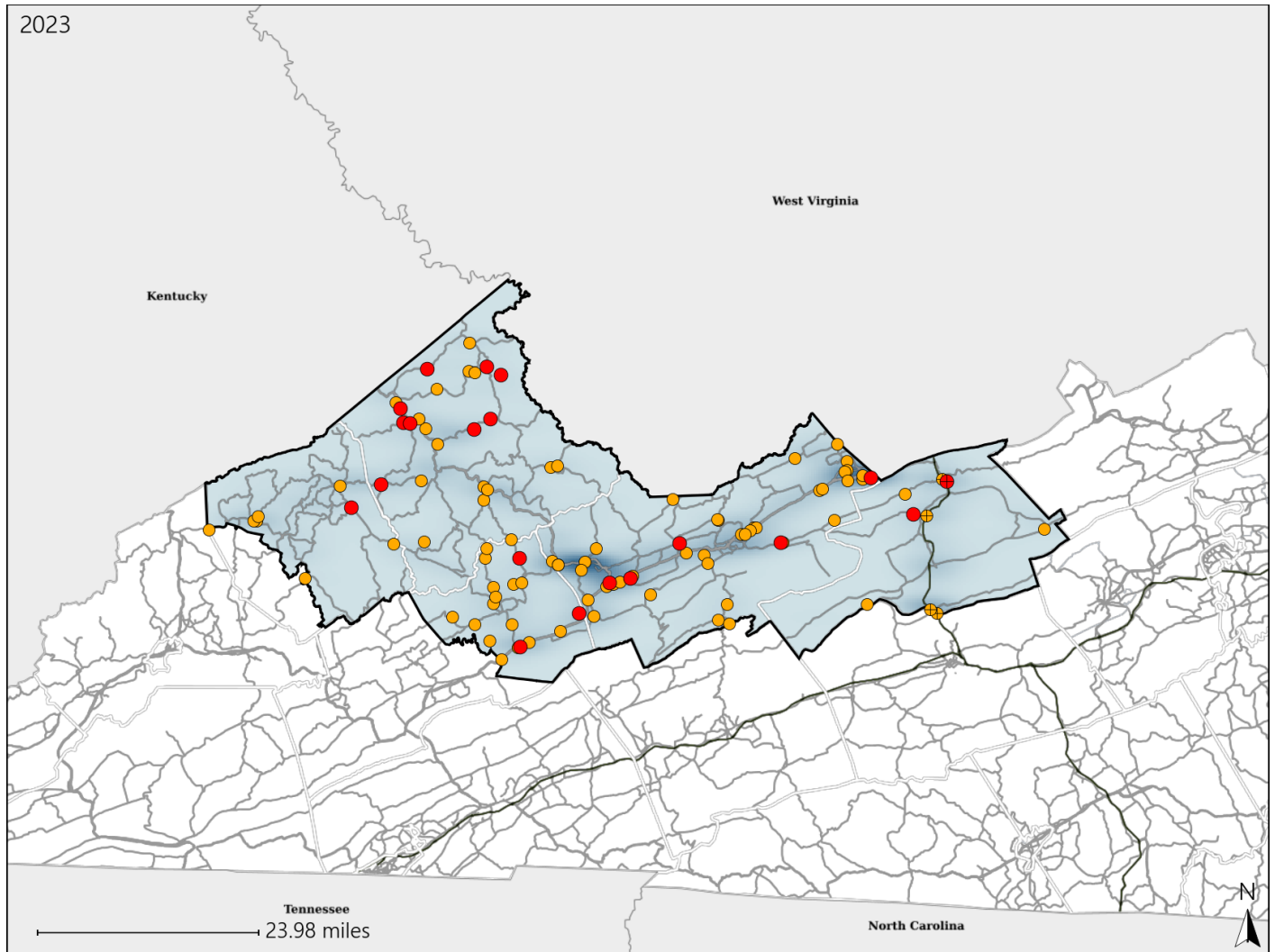


Virginia House District 43 Crash Statistics

Report Generated May, 2024

	Count	Highest Time Period(s)	Highest Day(s)	Highest Month(s)
Fatal Crashes	20	9:00am - 11:59am	Tuesday	September
Resulting Fatalities	20	(25%)	(30%)	(25%)
Serious Injury Crashes	84	9:00am - 11:59am Noon - 2:59pm	Saturday	June
		(36%)	(18%)	(17%)



House District 43 Crashes

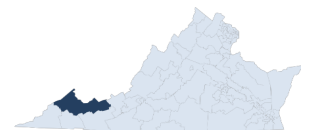
Interstate Crashes

- Fatal
- Serious Injury

Non-interstate Crashes

- Fatal
- Serious Injury

The blue gradient represents the density of all crashes.

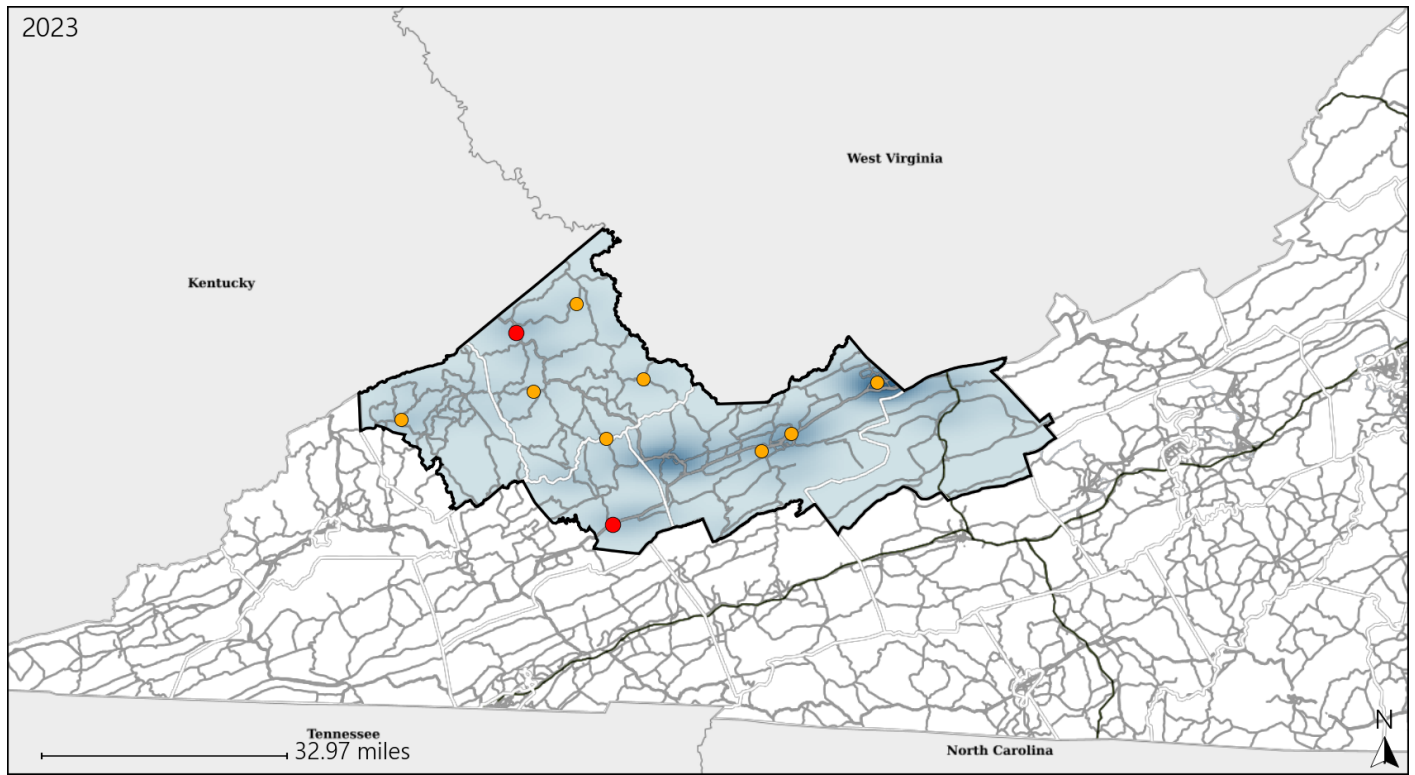


Available Crash Data - Calendar Year (CY)	CY 2020	CY 2021	CY 2022	CY 2023
Total Crashes	1156	1262	1397	1410
Fatal Crashes	19	14	16	20
Injury Crashes	392	441	411	429

Virginia House District 43 Alcohol Crash Statistics

Report Generated May, 2024

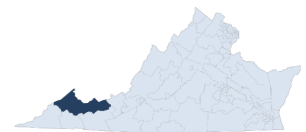
	Count	Highest Time Period(s)	Highest Day(s)	Highest Month(s)
Fatal Crashes	2	3:00am - 5:59am	Thursday • Wednesday	April • August
Resulting Fatalities	2	9:00pm - 11:59pm (100%)	(100%)	(100%)
Serious Injury Crashes	8	3:00pm - 5:59pm 6:00pm - 8:59pm (50%)	Saturday • Sunday (50%)	July • June (50%)



House District 43 Alcohol-Related Crashes

Interstate Crashes Non-interstate Crashes
 ● Fatal ● Fatal
 ⊕ Serious Injury ⊕ Serious Injury

The blue gradient represents the density of all alcohol-related crashes.

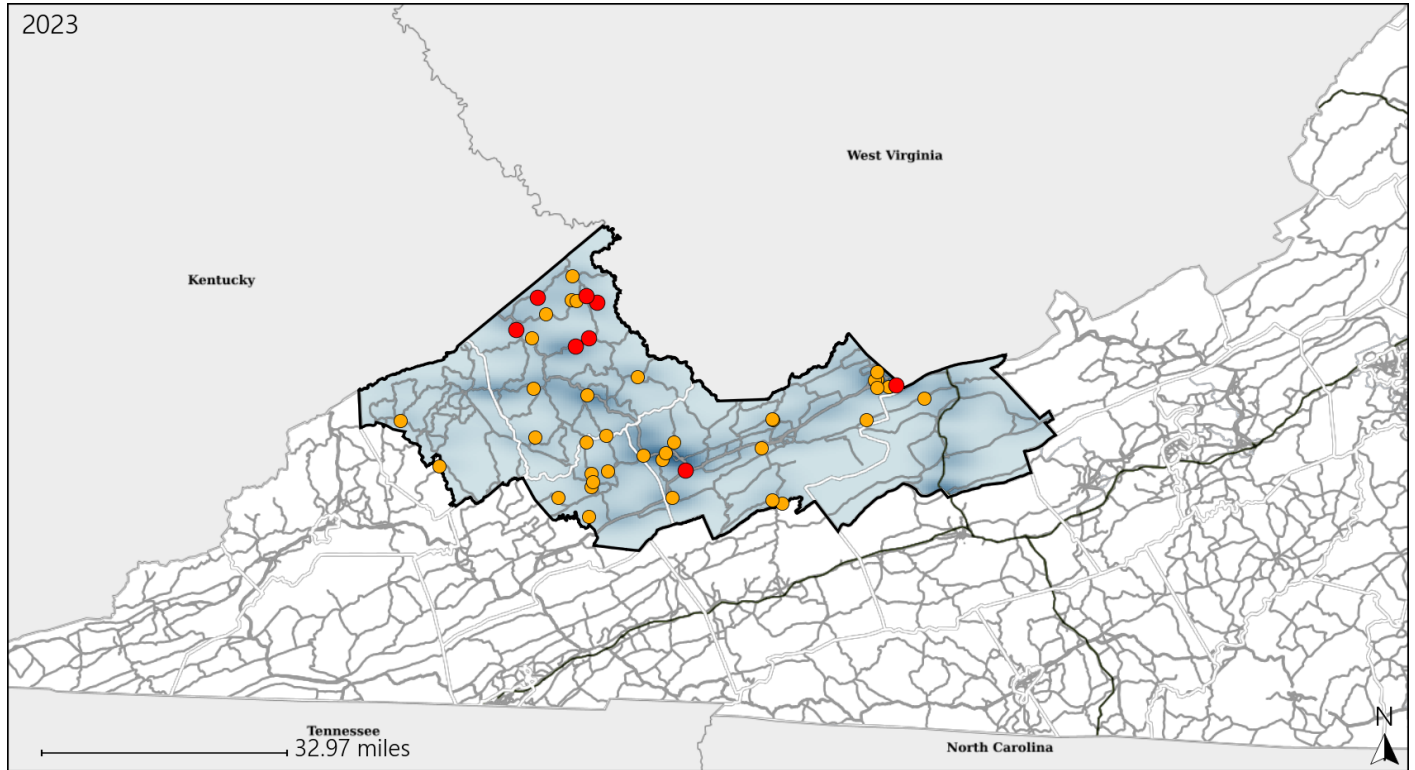


Available Crash Data - Calendar Year (CY)	CY 2020	CY 2021	CY 2022	CY 2023
Total Crashes	1156	1262	1397	1410
Fatal Crashes	19	14	16	20
Injury Crashes	392	441	411	429
Alcohol-Related Fatal Crashes	6	2	3	2
Percent of Alcohol-Related Fatal Crashes to Total Fatal Crashes	32%	14%	19%	10%
Alcohol-Related Injury Crashes	26	28	30	27
Percent of Alcohol-Related Injury Crashes to Total Injury Crashes	7%	6%	7%	6%

Virginia House District 43 Speed Crash Statistics

Report Generated May, 2024

	Count	Highest Time Period(s)	Highest Day(s)	Highest Month(s)
Fatal Crashes	8	3:00pm - 5:59pm	Tuesday	September
Resulting Fatalities	8	6:00am - 8:59am (50%)	(50%)	(50%)
Serious Injury Crashes	36	6:00pm - 8:59pm (19%)	Saturday (25%)	July (17%)



House District 43 Speed-Related Crashes

Interstate Crashes Non-interstate Crashes
 ● Fatal ● Fatal
 ● Serious Injury ● Serious Injury
 The blue gradient represents the density of all speed-related crashes.

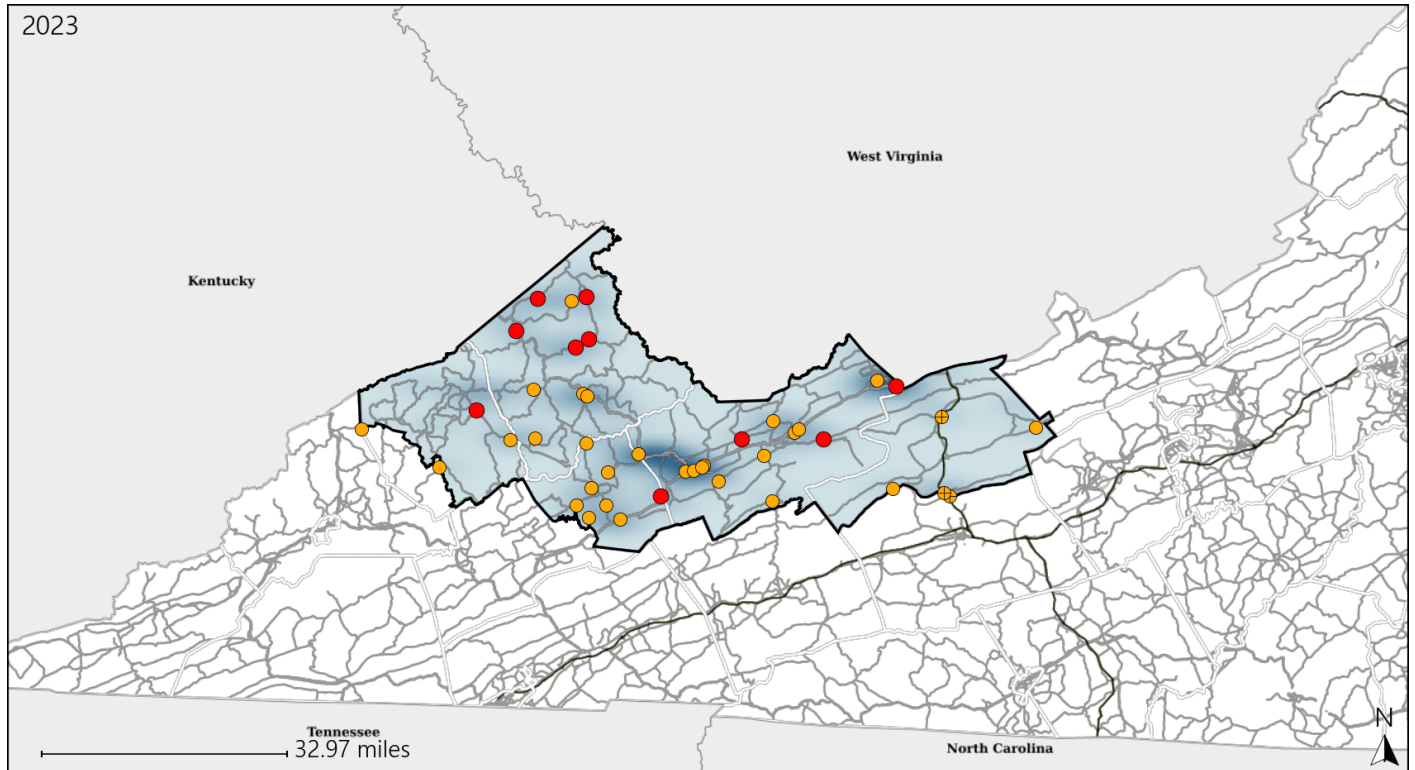


Available Crash Data - Calendar Year (CY)	CY 2020	CY 2021	CY 2022	CY 2023
Total Crashes	1156	1262	1397	1410
Fatal Crashes	19	14	16	20
Injury Crashes	392	441	411	429
Speed-Related Fatal Crashes	7	6	9	8
Percent of Speed-Related Fatal Crashes to Total Fatal Crashes	37%	43%	56%	40%
Speed-Related Injury Crashes	154	152	155	151
Percent of Speed-Related Injury Crashes to Total Injury Crashes	39%	34%	38%	35%

Virginia House District 43 Unrestrained Crash Statistics

Report Generated May, 2024

	Count	Highest Time Period(s)	Highest Day(s)	Highest Month(s)
Fatal Crashes	10	6:00am - 8:59am	Friday • Monday	September
Unrestrained Fatalities	10	(40%)	(40%)	(40%)
Serious Injury Crashes	32	Noon - 2:59pm	Wednesday	June • March
		(22%)	(22%)	(32%)



House District 43 Unrestrained-Related Crashes

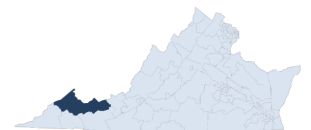
Interstate Crashes

Non-interstate Crashes

- Fatal
- Serious Injury

- Fatal
- Serious Injury

The blue gradient represents the density of all unrestrained-related crashes.

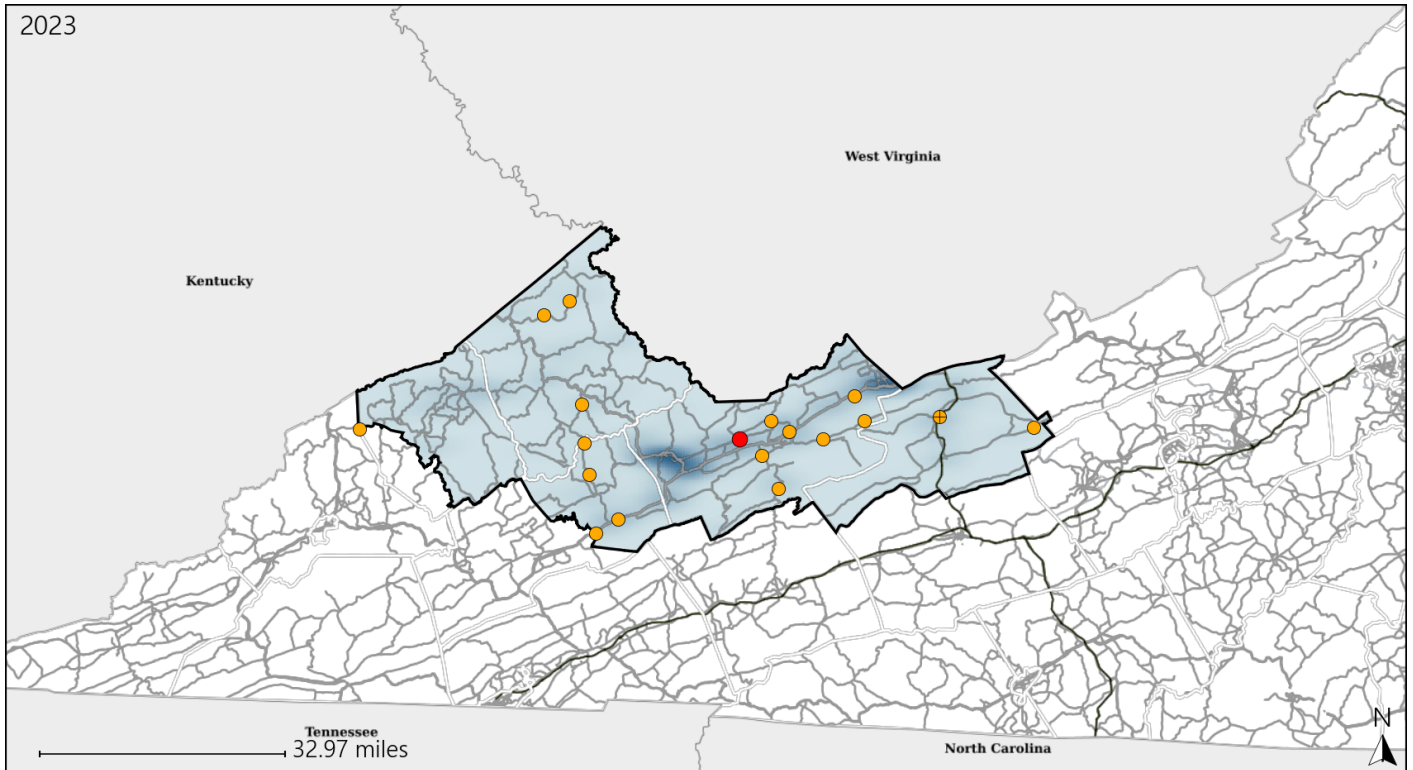


Available Crash Data - Calendar Year (CY)	CY 2020	CY 2021	CY 2022	CY 2023
Total Crashes	1156	1262	1397	1410
Fatalities	20	14	16	20
Injuries	564	624	590	622
Unrestrained Fatalities	12	7	10	10
Percent of Unrestrained Fatalities to Total Fatalities	60%	50%	63%	50%
Unrestrained Injuries	64	80	97	109
Percent of Unrestrained Injuries to Total Injuries	11%	13%	16%	18%

Virginia House District 43 Distracted Driving Crash Statistics

Report Generated May, 2024

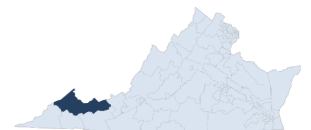
	Count	Highest Time Period(s)	Highest Day(s)	Highest Month(s)
Fatal Crashes	1	6:00am - 8:59am	Monday	April
Resulting Fatalities	1	(100%)	(100%)	(100%)
Serious Injury Crashes	17	3:00pm - 5:59pm	Wednesday	August - October
		(29%)	(41%)	(36%)



House District 43 Distracted Driving-Related Crashes

- | | |
|--------------------|------------------------|
| Interstate Crashes | Non-interstate Crashes |
| Fatal | Fatal |
| Serious Injury | Serious Injury |

The blue gradient represents the density of all distracted driving-related crashes.



Available Crash Data - Calendar Year (CY)	CY 2020	CY 2021	CY 2022	CY 2023
Total Crashes	1156	1262	1397	1410
Fatal Crashes	19	14	16	20
Injury Crashes	392	441	411	429
Distracted Driving-Related Fatal Crashes	2	3	2	1
Percent of Distracted Driving-Related Fatal Crashes to Total Fatal Crashes	11%	21%	13%	5%
Distracted Driving-Related Injury Crashes	70	97	98	91
Percent of Distracted Driving-Related Injury Crashes to Total Injury Crashes	18%	22%	24%	21%