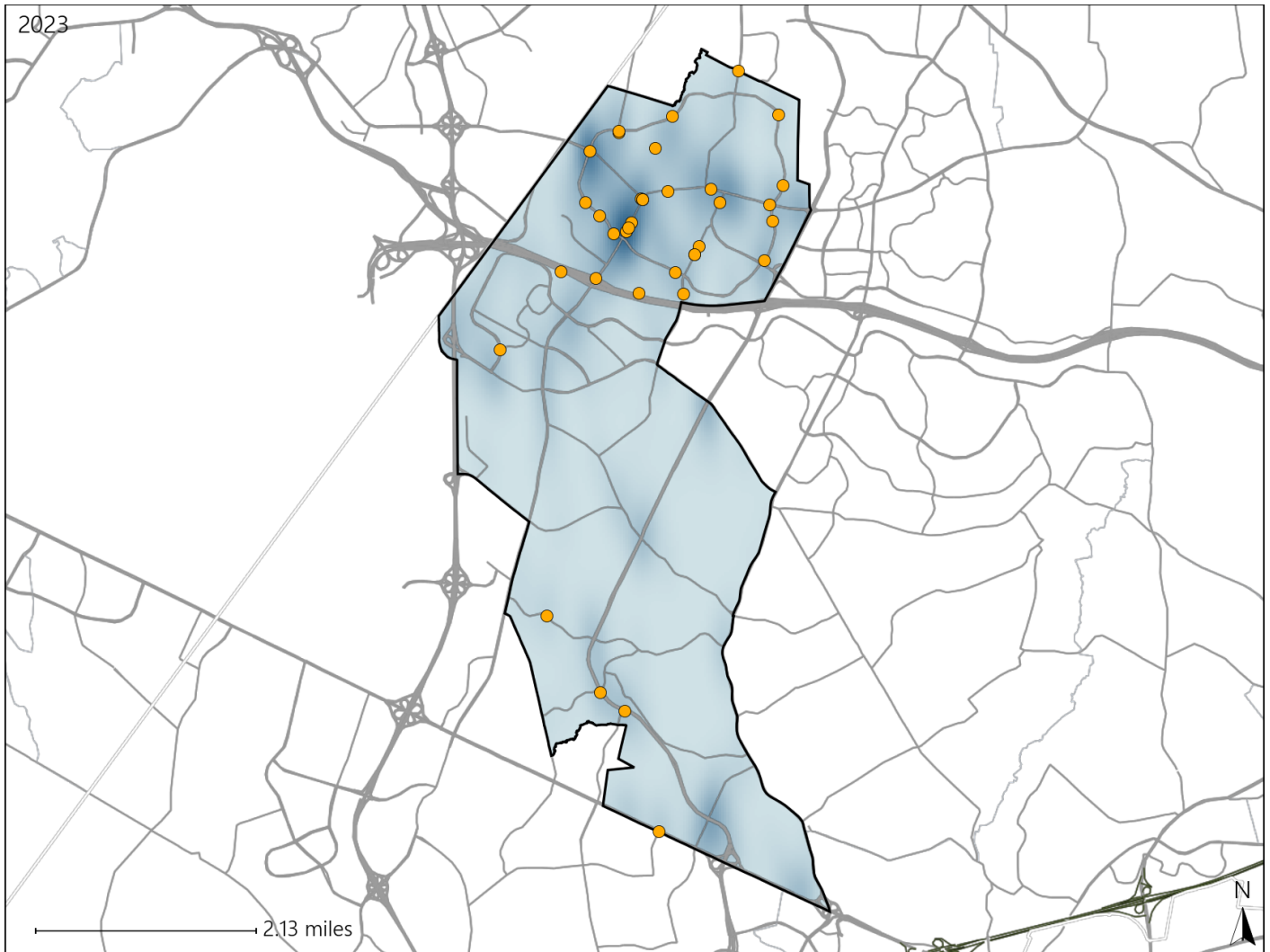


Virginia House District 8 Crash Statistics

Report Generated May, 2024

	Count	Highest Time Period(s)	Highest Day(s)	Highest Month(s)
Fatal Crashes	0	-	-	-
Resulting Fatalities	0	-	-	-
Serious Injury Crashes	36	3:00pm - 5:59pm 9:00am - 11:59am (38%)	Saturday (22%)	January • July (28%)



House District 8 Crashes

Interstate Crashes

- Fatal
- Serious Injury

Non-interstate Crashes

- Fatal
- Serious Injury

The blue gradient represents the density of all crashes.

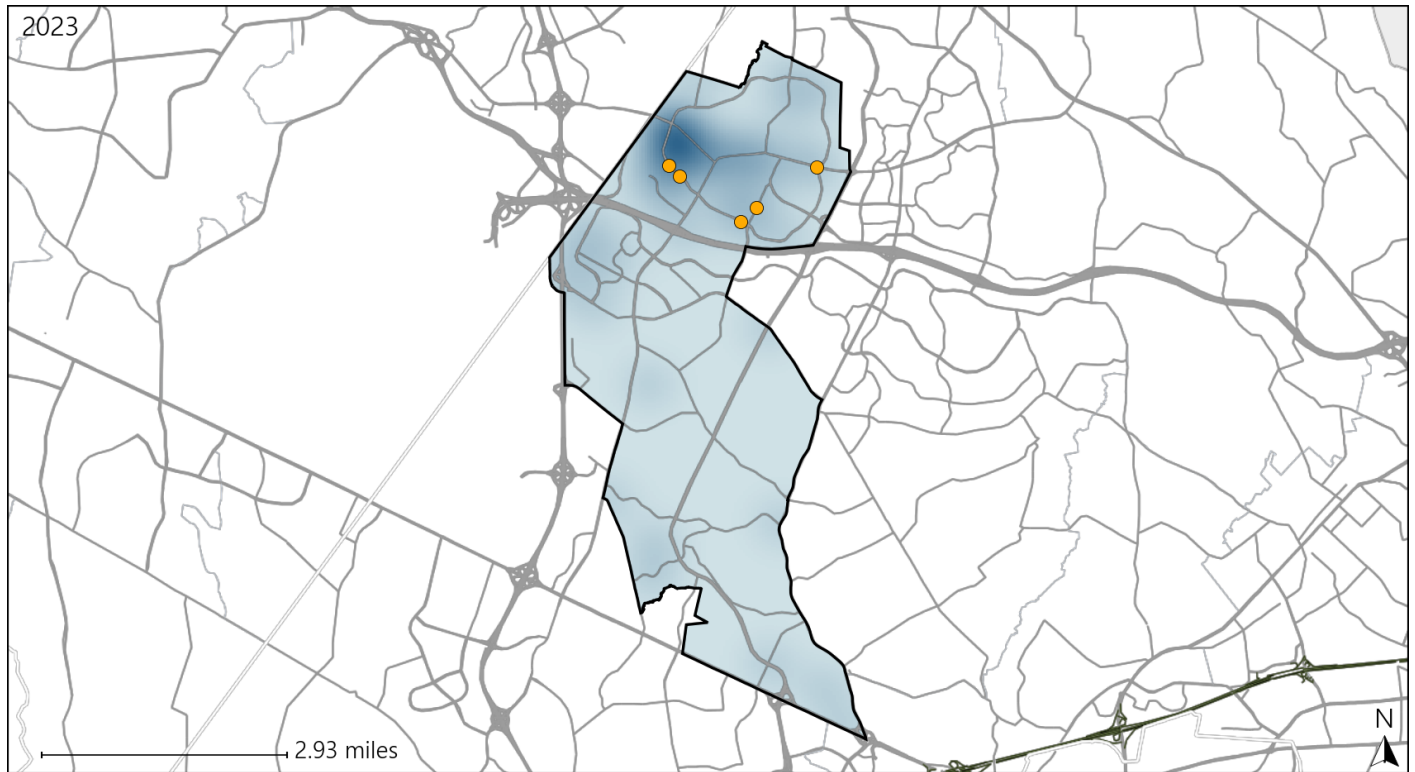


Available Crash Data - Calendar Year (CY)	CY 2020	CY 2021	CY 2022	CY 2023
Total Crashes	483	574	618	688
Fatal Crashes	1	0	1	0
Injury Crashes	236	255	297	319

Virginia House District 8 Alcohol Crash Statistics

Report Generated May, 2024

	Count	Highest Time Period(s)	Highest Day(s)	Highest Month(s)
Fatal Crashes	0	-	-	-
Resulting Fatalities	0	-	-	-
Serious Injury Crashes	5	3:00am - 5:59am 9:00am - 11:59am (40%)	Sunday (60%)	December + January (80%)



House District 8 Alcohol-Related Crashes

Interstate Crashes

- Fatal
- ⊕ Serious Injury

Non-interstate Crashes

- Fatal
- Serious Injury

The blue gradient represents the density of all alcohol-related crashes.

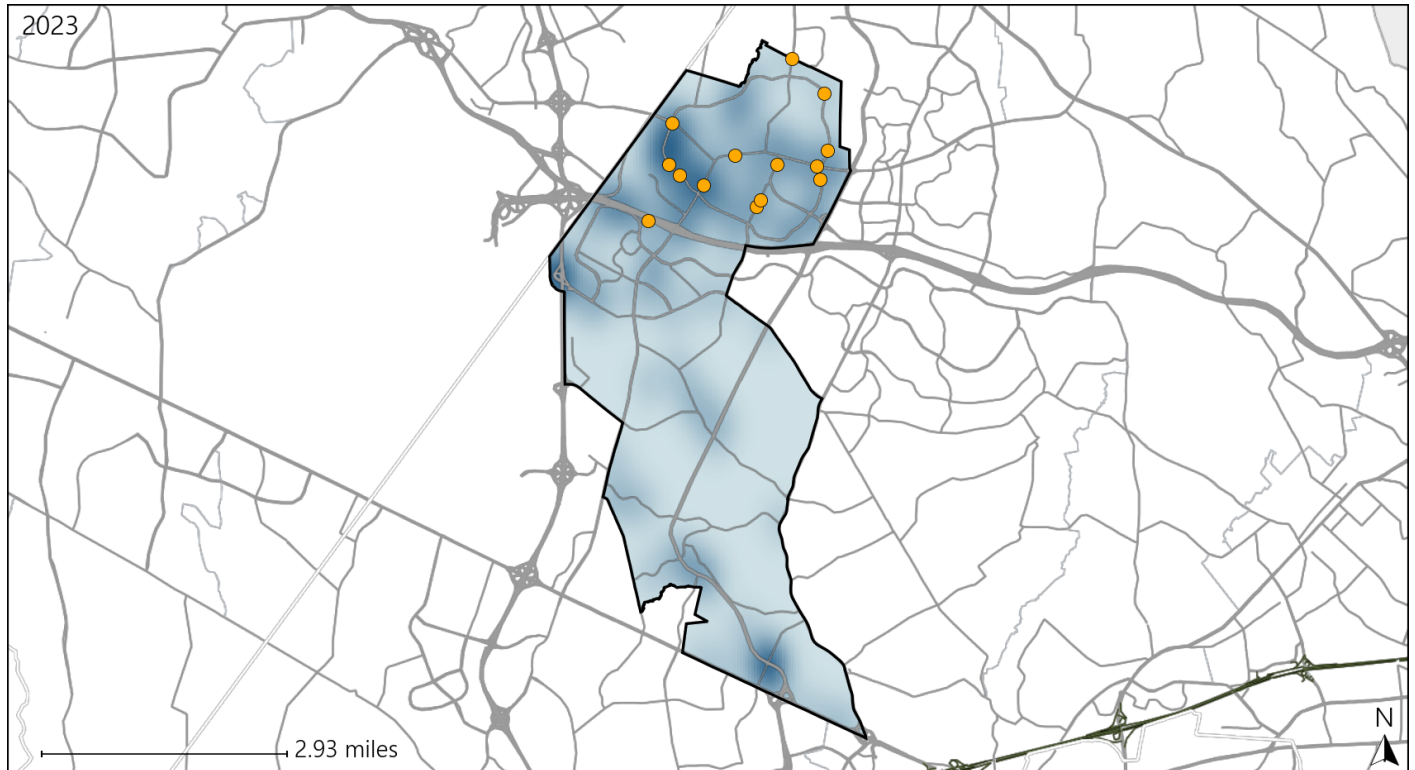


Available Crash Data - Calendar Year (CY)	CY 2020	CY 2021	CY 2022	CY 2023
Total Crashes	483	574	618	688
Fatal Crashes	1	0	1	0
Injury Crashes	236	255	297	319
Alcohol-Related Fatal Crashes	0	0	0	0
Percent of Alcohol-Related Fatal Crashes to Total Fatal Crashes	0%	0%	0%	0%
Alcohol-Related Injury Crashes	25	18	26	25
Percent of Alcohol-Related Injury Crashes to Total Injury Crashes	11%	7%	9%	8%

Virginia House District 8 Speed Crash Statistics

Report Generated May, 2024

	Count	Highest Time Period(s)	Highest Day(s)	Highest Month(s)
Fatal Crashes	0	-	-	-
Resulting Fatalities	0	-	-	-
Serious Injury Crashes	14	6:00pm - 8:59pm (29%)	Thursday (29%)	January (29%)



House District 8 Speed-Related Crashes

Interstate Crashes

- Fatal
- Serious Injury

Non-interstate Crashes

- Fatal
- Serious Injury

The blue gradient represents the density of all speed-related crashes.

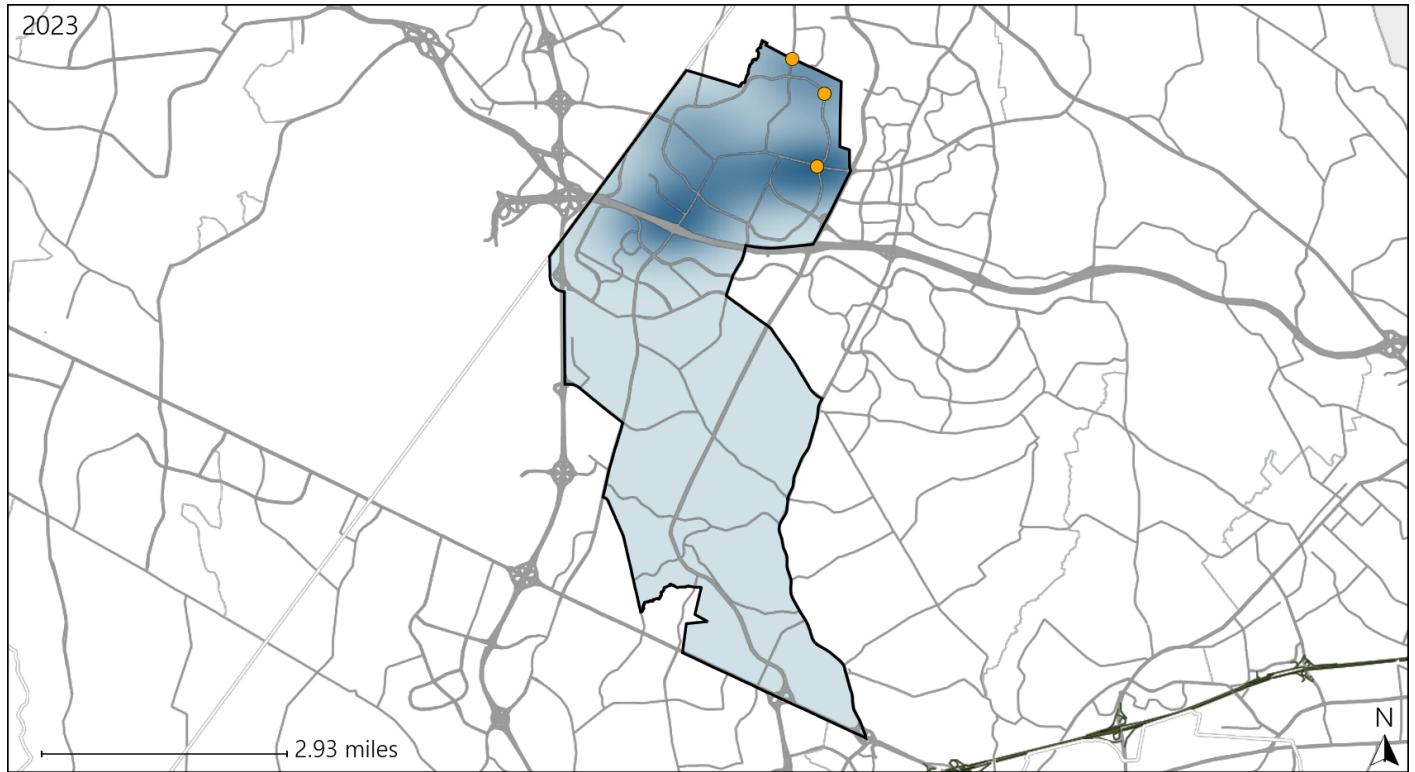


Available Crash Data - Calendar Year (CY)	CY 2020	CY 2021	CY 2022	CY 2023
Total Crashes	483	574	618	688
Fatal Crashes	1	0	1	0
Injury Crashes	236	255	297	319
Speed-Related Fatal Crashes	0	0	0	0
Percent of Speed-Related Fatal Crashes to Total Fatal Crashes	0%	0%	0%	0%
Speed-Related Injury Crashes	33	46	43	56
Percent of Speed-Related Injury Crashes to Total Injury Crashes	14%	18%	14%	18%

Virginia House District 8 Unrestrained Crash Statistics

Report Generated May, 2024

	Count	Highest Time Period(s)	Highest Day(s)	Highest Month(s)
Fatal Crashes	0	-	-	-
Unrestrained Fatalities	0	-	-	-
Serious Injury Crashes	3	6:00pm - 8:59pm (67%)	Friday • Monday (66%)	December • June (66%)



House District 8 Unrestrained-Related Crashes

Interstate Crashes

Non-interstate Crashes

- Fatal
- Serious Injury

- Fatal
- Serious Injury

The blue gradient represents the density of all unrestrained-related crashes.

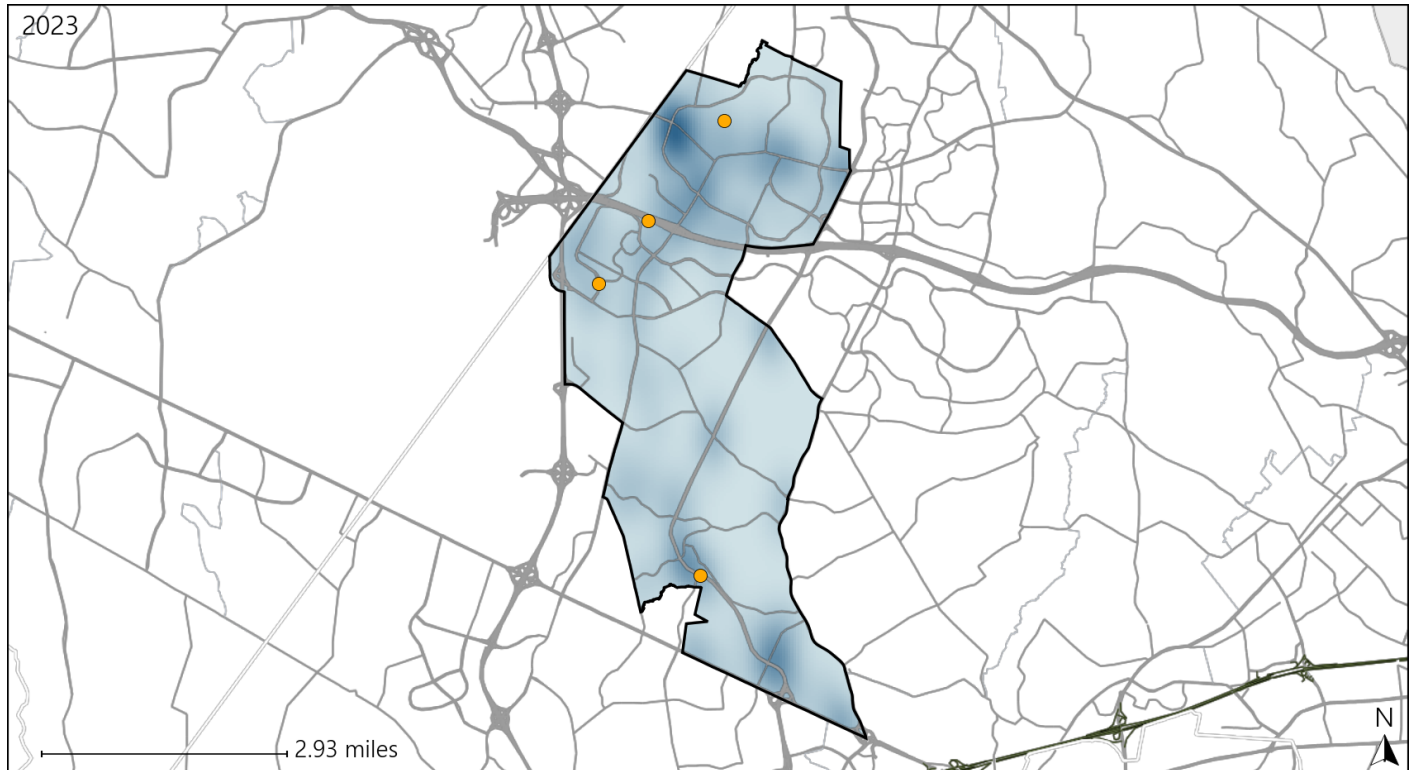


Available Crash Data - Calendar Year (CY)	CY 2020	CY 2021	CY 2022	CY 2023
Total Crashes	483	574	618	688
Fatalities	1	0	1	0
Injuries	422	439	506	565
Unrestrained Fatalities	1	0	0	0
Percent of Unrestrained Fatalities to Total Fatalities	100%	0%	0%	0%
Unrestrained Injuries	17	16	11	10
Percent of Unrestrained Injuries to Total Injuries	4%	4%	2%	2%

Virginia House District 8 Distracted Driving Crash Statistics

Report Generated May, 2024

	Count	Highest Time Period(s)	Highest Day(s)	Highest Month(s)
Fatal Crashes	0	-	-	-
Resulting Fatalities	0	-	-	-
Serious Injury Crashes	4	6:00am - 8:59am (50%)	Thursday (50%)	August (50%)



House District 8 Distracted Driving-Related Crashes

- | | |
|--|--|
| Interstate Crashes | Non-interstate Crashes |
| ● Fatal | ● Fatal |
| ● Serious Injury | ● Serious Injury |

The blue gradient represents the density of all distracted driving-related crashes.



Available Crash Data - Calendar Year (CY)	CY 2020	CY 2021	CY 2022	CY 2023
Total Crashes	483	574	618	688
Fatal Crashes	1	0	1	0
Injury Crashes	236	255	297	319
Distracted Driving-Related Fatal Crashes	0	0	0	0
Percent of Distracted Driving-Related Fatal Crashes to Total Fatal Crashes	0%	0%	0%	0%
Distracted Driving-Related Injury Crashes	63	80	72	66
Percent of Distracted Driving-Related Injury Crashes to Total Injury Crashes	27%	31%	24%	21%