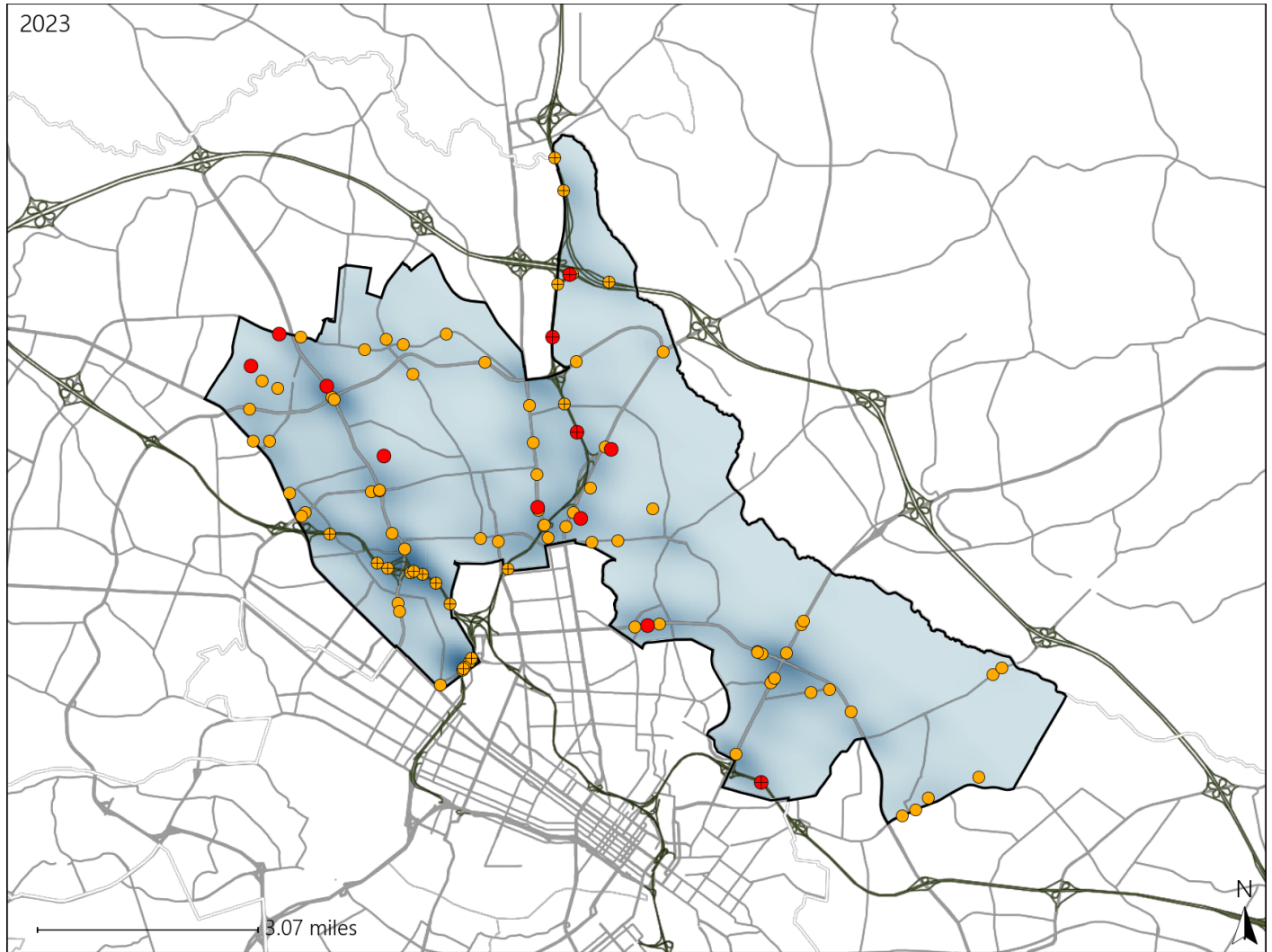


# Virginia House District 80 Crash Statistics

Report Generated May, 2024

	Count	Highest Time Period(s)	Highest Day(s)	Highest Month(s)
<b>Fatal Crashes</b>	<b>12</b>	<b>9:00pm - 11:59pm</b>	<b>Sunday</b>	<b>August • December</b>
<b>Resulting Fatalities</b>	<b>12</b>	(33%)	(25%)	(34%)
<b>Serious Injury Crashes</b>	<b>85</b>	<b>3:00pm - 5:59pm</b>	<b>Sunday</b>	<b>May</b>
		(20%)	(19%)	(13%)



## House District 80 Crashes

Interstate Crashes

- Fatal
- Serious Injury

Non-interstate Crashes

- Fatal
- Serious Injury

The blue gradient represents the density of all crashes.

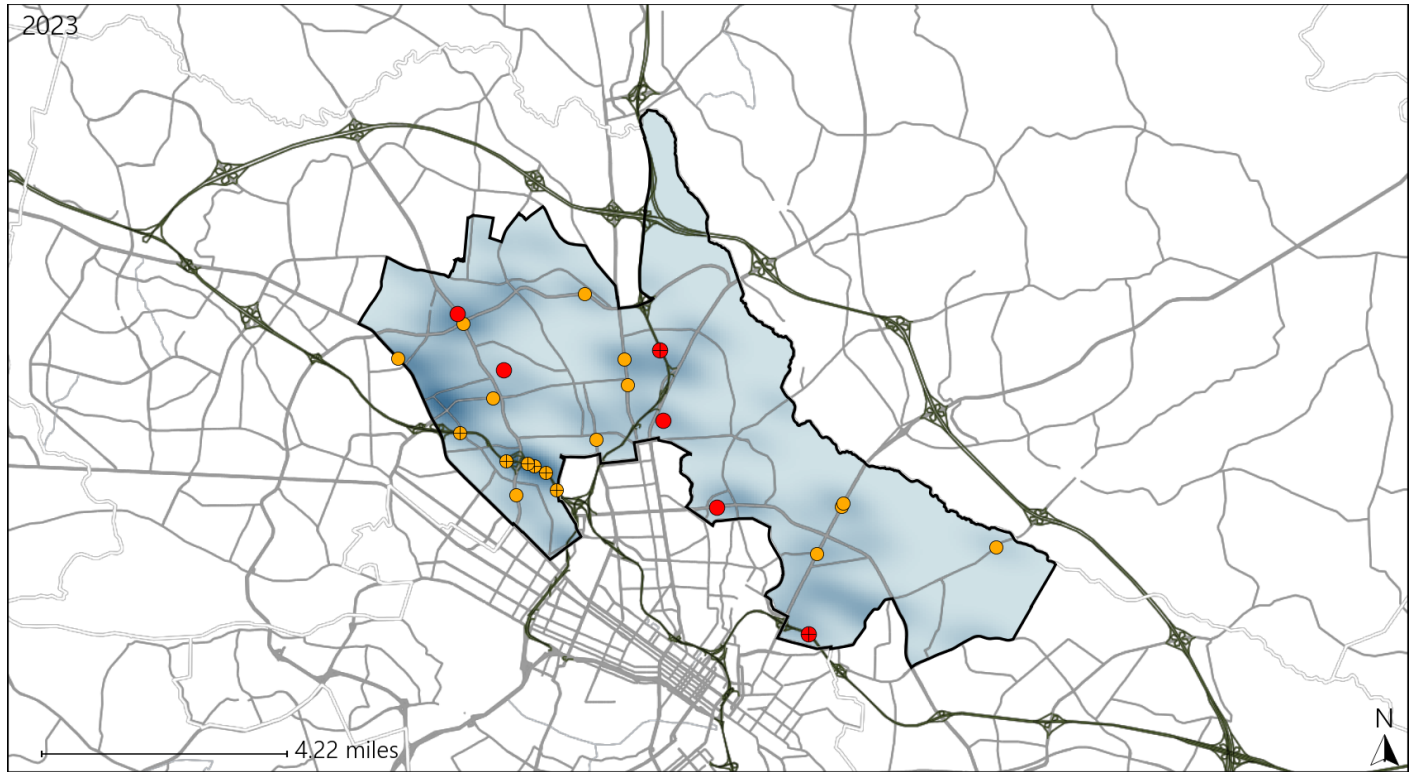


Available Crash Data - Calendar Year (CY)	CY 2020	CY 2021	CY 2022	CY 2023
Total Crashes	1656	1622	1719	1867
Fatal Crashes	12	14	11	12
Injury Crashes	442	447	469	523

# Virginia House District 80 Alcohol Crash Statistics

Report Generated May, 2024

	Count	Highest Time Period(s)	Highest Day(s)	Highest Month(s)
<b>Fatal Crashes</b>	<b>6</b>	<b>9:00pm - 11:59pm</b>	<b>Sunday</b>	<b>January</b>
<b>Resulting Fatalities</b>	<b>6</b>	(50%)	(33%)	(33%)
<b>Serious Injury Crashes</b>	<b>18</b>	<b>6:00pm - 8:59pm</b>	<b>Sunday</b>	<b>December</b>
		(28%)	(39%)	(22%)



## House District 80 Alcohol-Related Crashes

Interstate Crashes

Non-interstate Crashes

- Fatal
- Serious Injury

- Fatal
- Serious Injury

The blue gradient represents the density of all alcohol-related crashes.

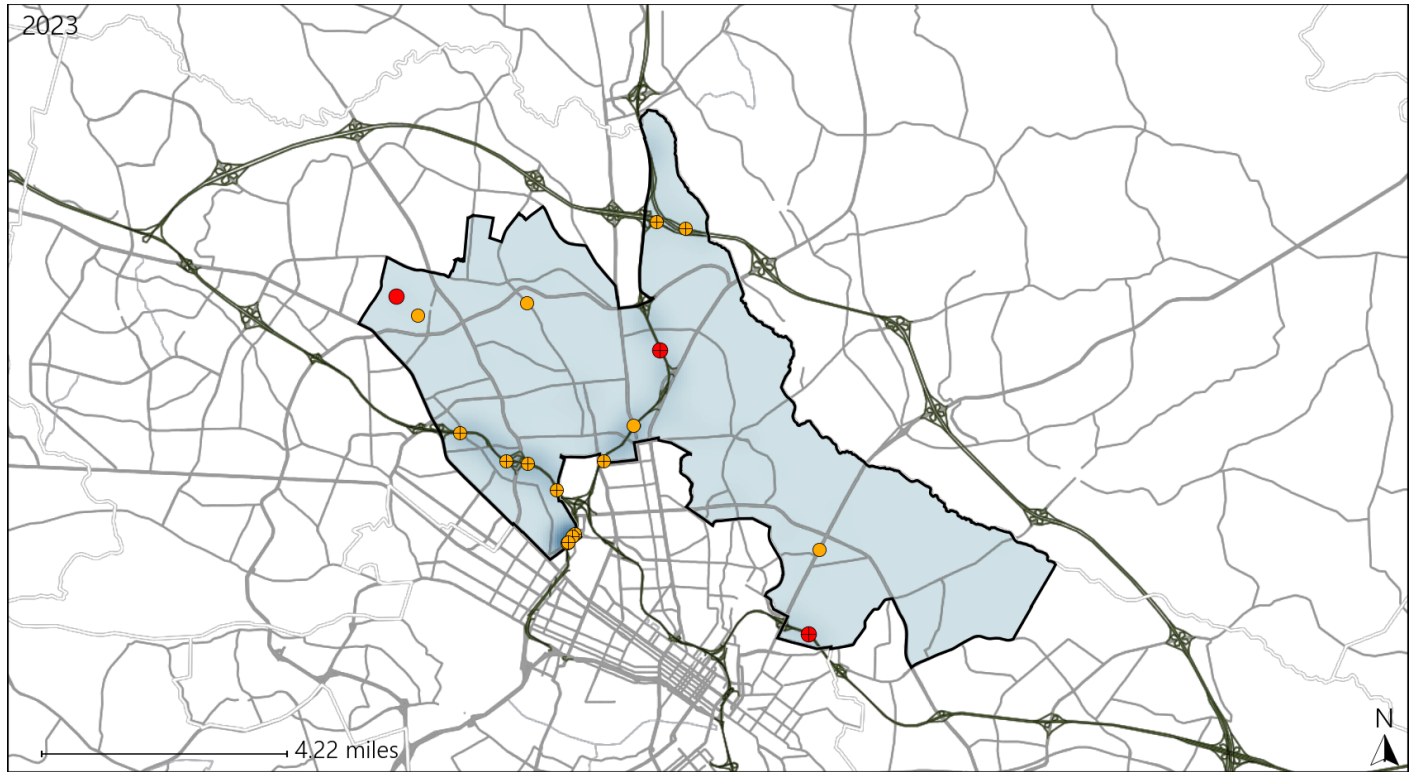


Available Crash Data - Calendar Year (CY)	CY 2020	CY 2021	CY 2022	CY 2023
<b>Total Crashes</b>	<b>1656</b>	<b>1622</b>	<b>1719</b>	<b>1867</b>
<b>Fatal Crashes</b>	<b>12</b>	<b>14</b>	<b>11</b>	<b>12</b>
<b>Injury Crashes</b>	<b>442</b>	<b>447</b>	<b>469</b>	<b>523</b>
<b>Alcohol-Related Fatal Crashes</b>	<b>2</b>	<b>6</b>	<b>2</b>	<b>6</b>
<b>Percent of Alcohol-Related Fatal Crashes to Total Fatal Crashes</b>	<b>17%</b>	<b>43%</b>	<b>18%</b>	<b>50%</b>
<b>Alcohol-Related Injury Crashes</b>	<b>30</b>	<b>29</b>	<b>38</b>	<b>36</b>
<b>Percent of Alcohol-Related Injury Crashes to Total Injury Crashes</b>	<b>7%</b>	<b>6%</b>	<b>8%</b>	<b>7%</b>

# Virginia House District 80 Speed Crash Statistics

Report Generated May, 2024

	Count	Highest Time Period(s)	Highest Day(s)	Highest Month(s)
<b>Fatal Crashes</b>	<b>3</b>	<b>3:00pm - 5:59pm</b>	<b>Tuesday</b>	<b>September</b>
<b>Resulting Fatalities</b>	<b>3</b>	(67%)	(67%)	(67%)
<b>Serious Injury Crashes</b>	<b>15</b>	<b>3:00pm - 5:59pm</b>	<b>Sunday</b>	<b>May</b>
		(27%)	(47%)	(27%)



## House District 80 Speed-Related Crashes

Interstate Crashes                      Non-interstate Crashes  
 ● Fatal                                      ● Fatal  
 ⊕ Serious Injury                          ⊕ Serious Injury

The blue gradient represents the density of all speed-related crashes.

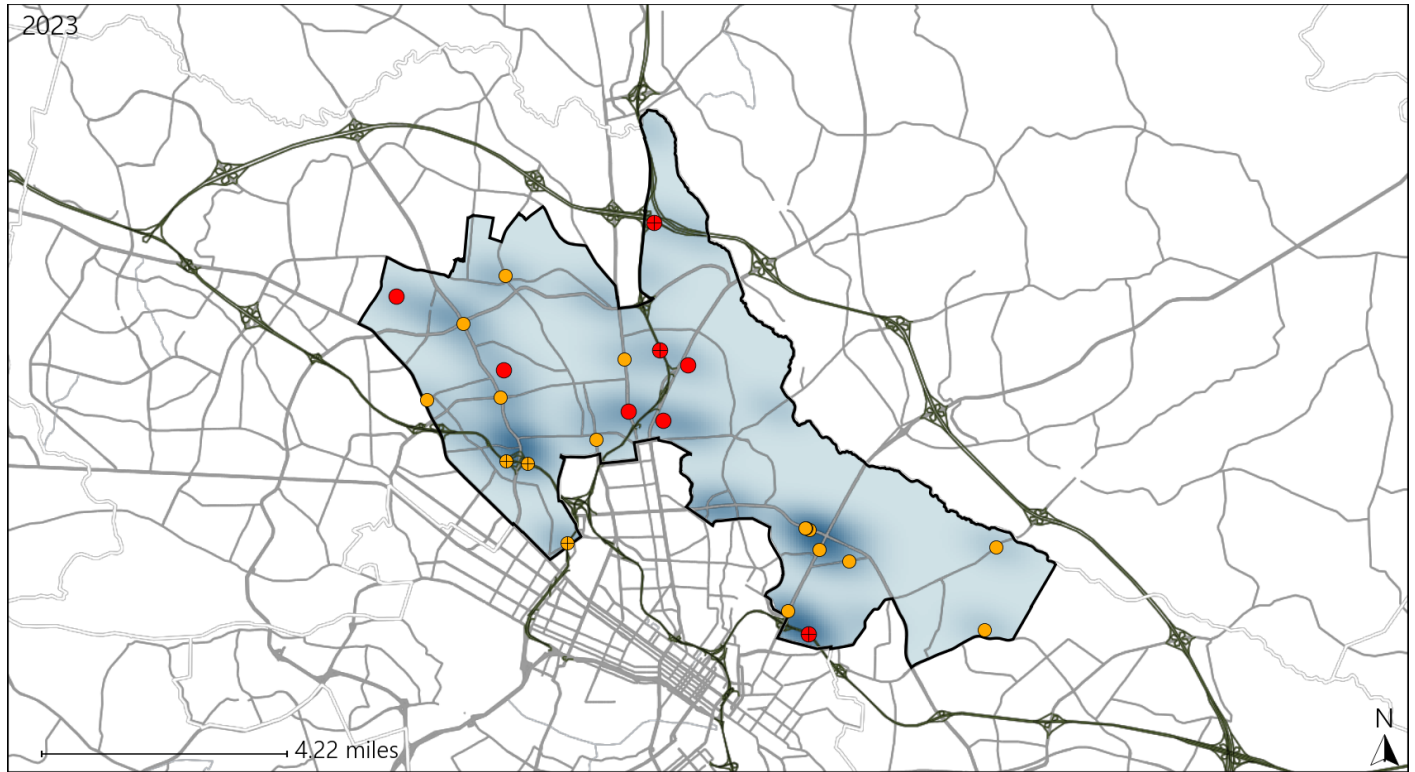


Available Crash Data - Calendar Year (CY)	CY 2020	CY 2021	CY 2022	CY 2023
Total Crashes	1656	1622	1719	1867
Fatal Crashes	12	14	11	12
Injury Crashes	442	447	469	523
Speed-Related Fatal Crashes	2	6	1	3
Percent of Speed-Related Fatal Crashes to Total Fatal Crashes	17%	43%	9%	25%
Speed-Related Injury Crashes	57	74	64	82
Percent of Speed-Related Injury Crashes to Total Injury Crashes	13%	17%	14%	16%

# Virginia House District 80 Unrestrained Crash Statistics

Report Generated May, 2024

	Count	Highest Time Period(s)	Highest Day(s)	Highest Month(s)
<b>Fatal Crashes</b>	<b>8</b>	<b>3:00pm - 5:59pm</b>	<b>Monday + Tuesday</b>	<b>December + September</b>
<b>Unrestrained Fatalities</b>	<b>8</b>	(38%)	(50%)	(50%)
<b>Serious Injury Crashes</b>	<b>17</b>	<b>3:00pm - 5:59pm</b>	<b>Sunday</b>	<b>December</b>
		(29%)	(29%)	(24%)



### House District 80 Unrestrained-Related Crashes

Interstate Crashes

- Fatal
- Serious Injury

Non-interstate Crashes

- Fatal
- Serious Injury

The blue gradient represents the density of all unrestrained-related crashes.

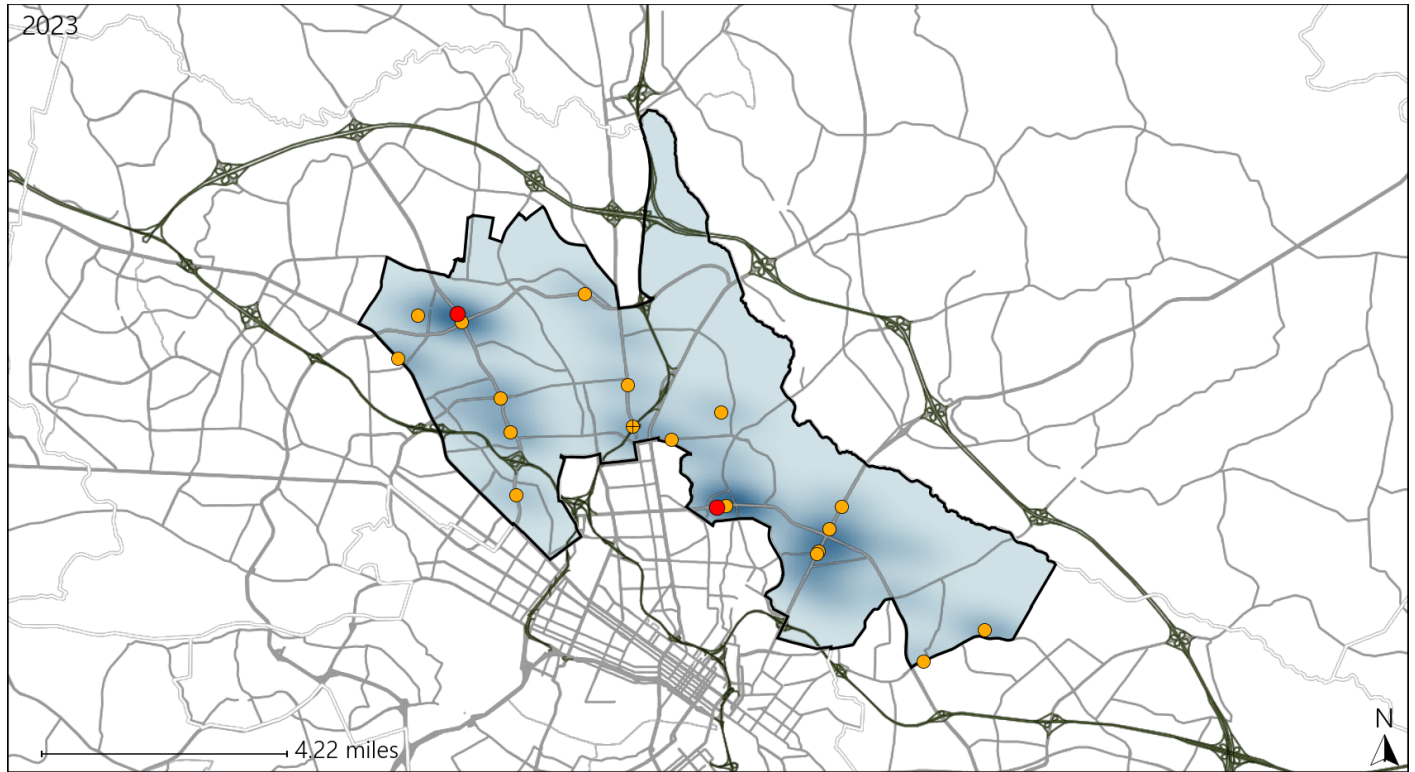


Available Crash Data - Calendar Year (CY)	CY 2020	CY 2021	CY 2022	CY 2023
<b>Total Crashes</b>	<b>1656</b>	<b>1622</b>	<b>1719</b>	<b>1867</b>
<b>Fatalities</b>	<b>13</b>	<b>17</b>	<b>11</b>	<b>12</b>
<b>Injuries</b>	<b>728</b>	<b>754</b>	<b>830</b>	<b>888</b>
<b>Unrestrained Fatalities</b>	<b>3</b>	<b>6</b>	<b>2</b>	<b>8</b>
<b>Percent of Unrestrained Fatalities to Total Fatalities</b>	<b>23%</b>	<b>35%</b>	<b>18%</b>	<b>67%</b>
<b>Unrestrained Injuries</b>	<b>39</b>	<b>55</b>	<b>52</b>	<b>62</b>
<b>Percent of Unrestrained Injuries to Total Injuries</b>	<b>5%</b>	<b>7%</b>	<b>6%</b>	<b>7%</b>

# Virginia House District 80 Pedestrian Crash Statistics

Report Generated May, 2024

	Count	Highest Time Period(s)	Highest Day(s)	Highest Month(s)
<b>Fatal Crashes</b>	<b>2</b>	<b>9:00pm - 11:59pm</b>	<b>Friday • Sunday</b>	<b>August • January</b>
<b>Pedestrian Fatalities</b>	<b>2</b>	(100%)	(100%)	(100%)
<b>Serious Injury Crashes</b>	<b>19</b>	<b>9:00pm - 11:59pm</b>	<b>Saturday</b>	<b>September</b>
		(26%)	(26%)	(26%)



### House District 80 Pedestrian-Related Crashes

- |                    |                        |
|--------------------|------------------------|
| Interstate Crashes | Non-interstate Crashes |
| Fatal              | Fatal                  |
| Serious Injury     | Serious Injury         |

The blue gradient represents the density of all pedestrian-related crashes.

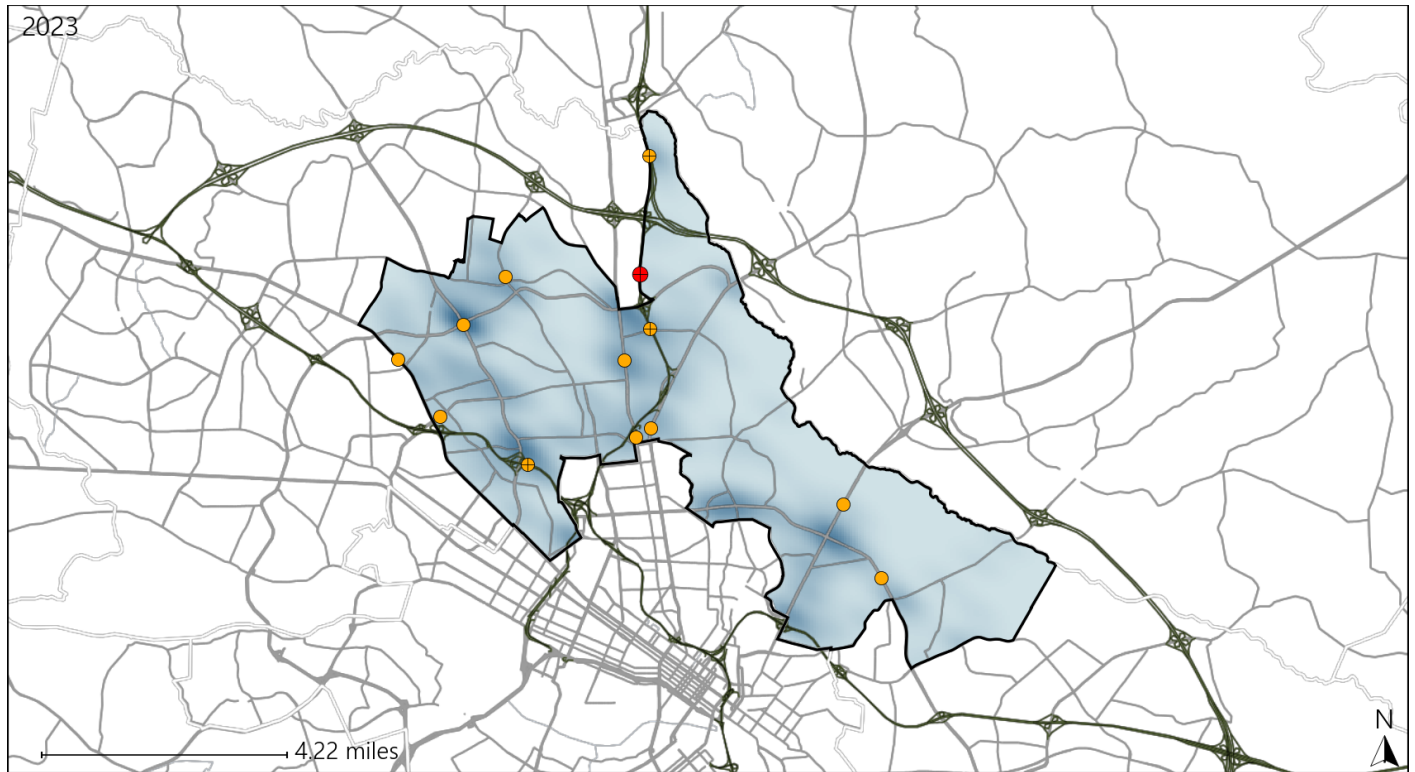


Available Crash Data - Calendar Year (CY)	CY 2020	CY 2021	CY 2022	CY 2023
Total Crashes	1656	1622	1719	1867
Fatal Crashes	12	14	11	12
Injury Crashes	442	447	469	523
Pedestrian-Related Fatal Crashes	4	3	4	2
Percent of Pedestrian-Related Fatal Crashes to Total Fatal Crashes	33%	21%	36%	17%
Pedestrian-Related Injury Crashes	23	25	30	38
Percent of Pedestrian-Related Injury Crashes to Total Injury Crashes	5%	6%	6%	7%

# Virginia House District 80 Distracted Driving Crash Statistics

Report Generated May, 2024

	Count	Highest Time Period(s)	Highest Day(s)	Highest Month(s)
<b>Fatal Crashes</b>	<b>1</b>	<b>3:00am - 5:59am</b>	<b>Thursday</b>	<b>August</b>
<b>Resulting Fatalities</b>	<b>1</b>	(100%)	(100%)	(100%)
<b>Serious Injury Crashes</b>	<b>12</b>	<b>6:00pm - 8:59pm</b> <b>Noon - 2:59pm</b>	<b>Sunday</b>	<b>July</b>
		(50%)	(25%)	(25%)



## House District 80 Distracted Driving-Related Crashes

- |  |  |
|--|--|
| Interstate Crashes                                   | Non-interstate Crashes                               |
| <span style="color: red;">●</span> Fatal             | <span style="color: red;">●</span> Fatal             |
| <span style="color: orange;">⊕</span> Serious Injury | <span style="color: orange;">●</span> Serious Injury |

The blue gradient represents the density of all distracted driving-related crashes.



Available Crash Data - Calendar Year (CY)	CY 2020	CY 2021	CY 2022	CY 2023
Total Crashes	1656	1622	1719	1867
Fatal Crashes	12	14	11	12
Injury Crashes	442	447	469	523
Distracted Driving-Related Fatal Crashes	1	2	1	1
Percent of Distracted Driving-Related Fatal Crashes to Total Fatal Crashes	8%	14%	9%	8%
Distracted Driving-Related Injury Crashes	85	58	68	79
Percent of Distracted Driving-Related Injury Crashes to Total Injury Crashes	19%	13%	14%	15%