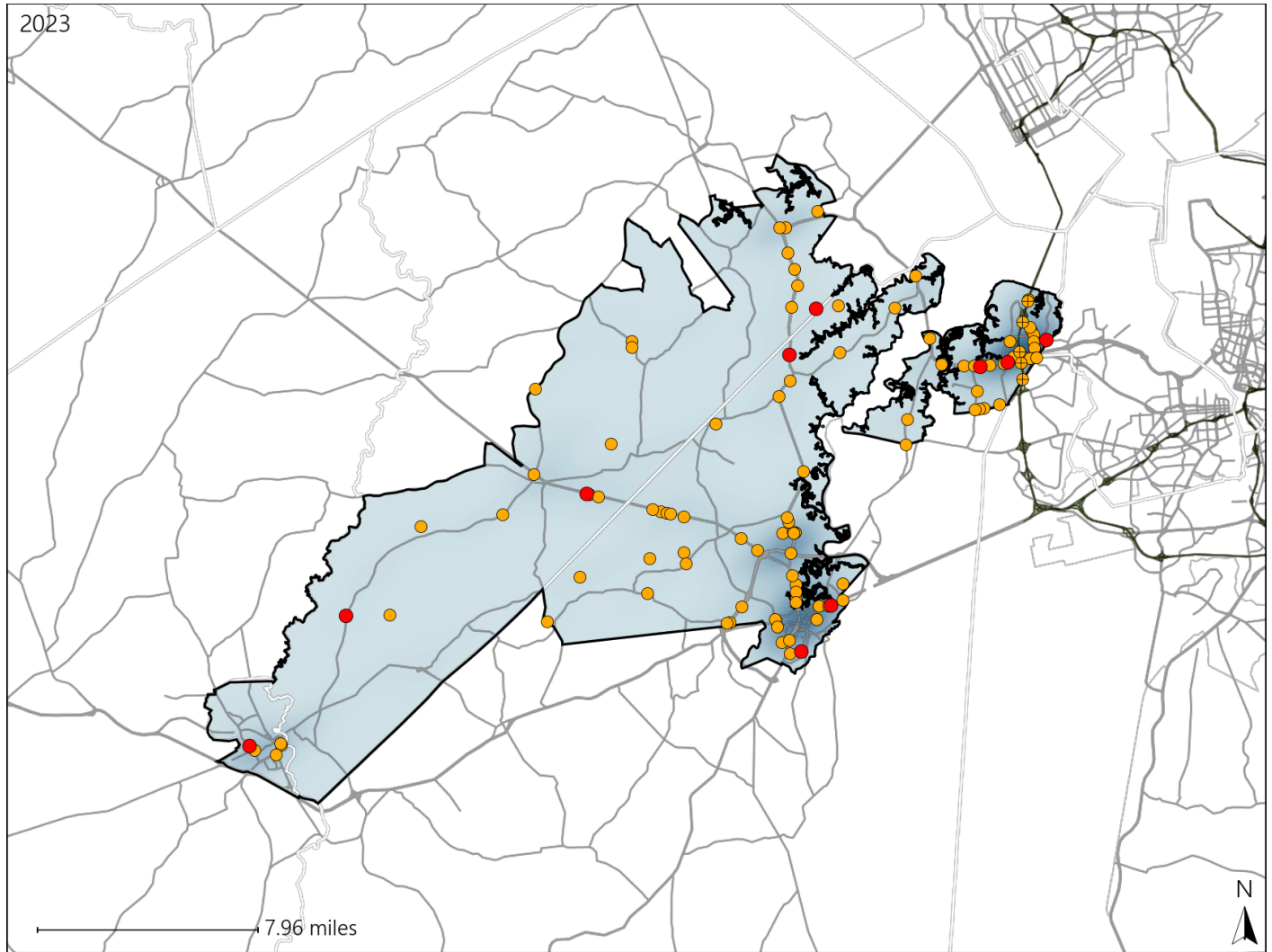


Virginia House District 84 Crash Statistics

Report Generated May, 2024

	Count	Highest Time Period(s)	Highest Day(s)	Highest Month(s)
Fatal Crashes	10	6:00pm - 8:59pm	Sunday • Thursday	February • March
Resulting Fatalities	10	(40%)	(60%)	(40%)
Serious Injury Crashes	103	3:00pm - 5:59pm	Thursday	December • June
		(25%)	(18%)	(22%)



House District 84 Crashes

Interstate Crashes

- Fatal
- Serious Injury

Non-interstate Crashes

- Fatal
- Serious Injury

The blue gradient represents the density of all crashes.

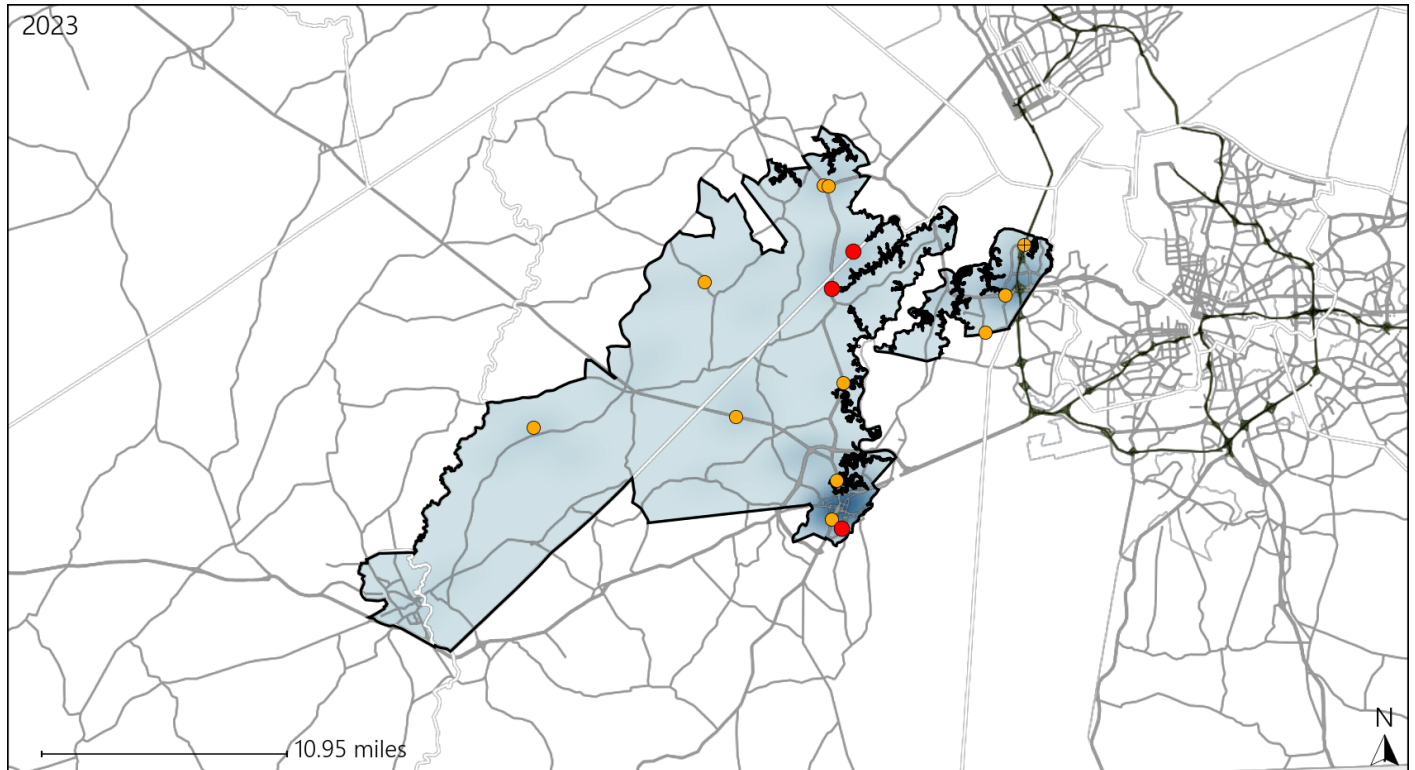


Available Crash Data - Calendar Year (CY)	CY 2020	CY 2021	CY 2022	CY 2023
Total Crashes	1191	1354	1346	1396
Fatal Crashes	5	11	7	10
Injury Crashes	542	575	583	649

Virginia House District 84 Alcohol Crash Statistics

Report Generated May, 2024

	Count	Highest Time Period(s)	Highest Day(s)	Highest Month(s)
Fatal Crashes	3	9:00pm - 11:59pm	Saturday • Sunday	February • July
Resulting Fatalities	3	(67%)	(66%)	(66%)
Serious Injury Crashes	11	6:00pm - 8:59pm	Sunday	July • March
		(36%)	(36%)	(36%)



House District 84 Alcohol-Related Crashes

Interstate Crashes

Non-interstate Crashes

- Fatal
- Serious Injury

- Fatal
- Serious Injury

The blue gradient represents the density of all alcohol-related crashes.

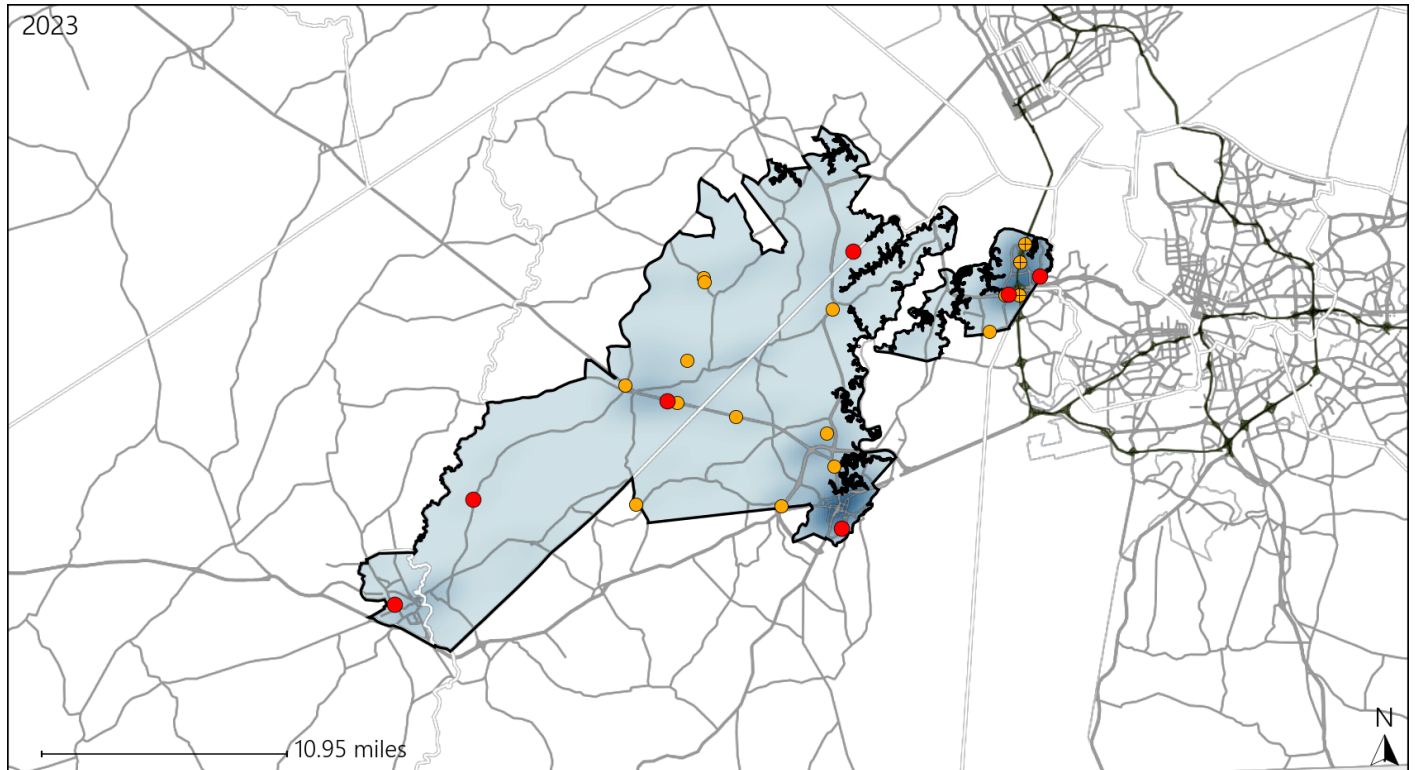


Available Crash Data - Calendar Year (CY)	CY 2020	CY 2021	CY 2022	CY 2023
Total Crashes	1191	1354	1346	1396
Fatal Crashes	5	11	7	10
Injury Crashes	542	575	583	649
Alcohol-Related Fatal Crashes	2	2	1	3
Percent of Alcohol-Related Fatal Crashes to Total Fatal Crashes	40%	18%	14%	30%
Alcohol-Related Injury Crashes	37	30	48	39
Percent of Alcohol-Related Injury Crashes to Total Injury Crashes	7%	5%	8%	6%

Virginia House District 84 Speed Crash Statistics

Report Generated May, 2024

	Count	Highest Time Period(s)	Highest Day(s)	Highest Month(s)
Fatal Crashes	7	6:00pm - 8:59pm	Thursday	March - October
Resulting Fatalities	7	(43%)	(43%)	(58%)
Serious Injury Crashes	16	Noon - 2:59pm	Thursday	July
		(25%)	(38%)	(25%)




House District 84 Speed-Related Crashes


Interstate Crashes

Non-interstate Crashes

 Fatal

 Fatal

 Serious Injury

 Serious Injury

The blue gradient represents the density of all speed-related crashes.

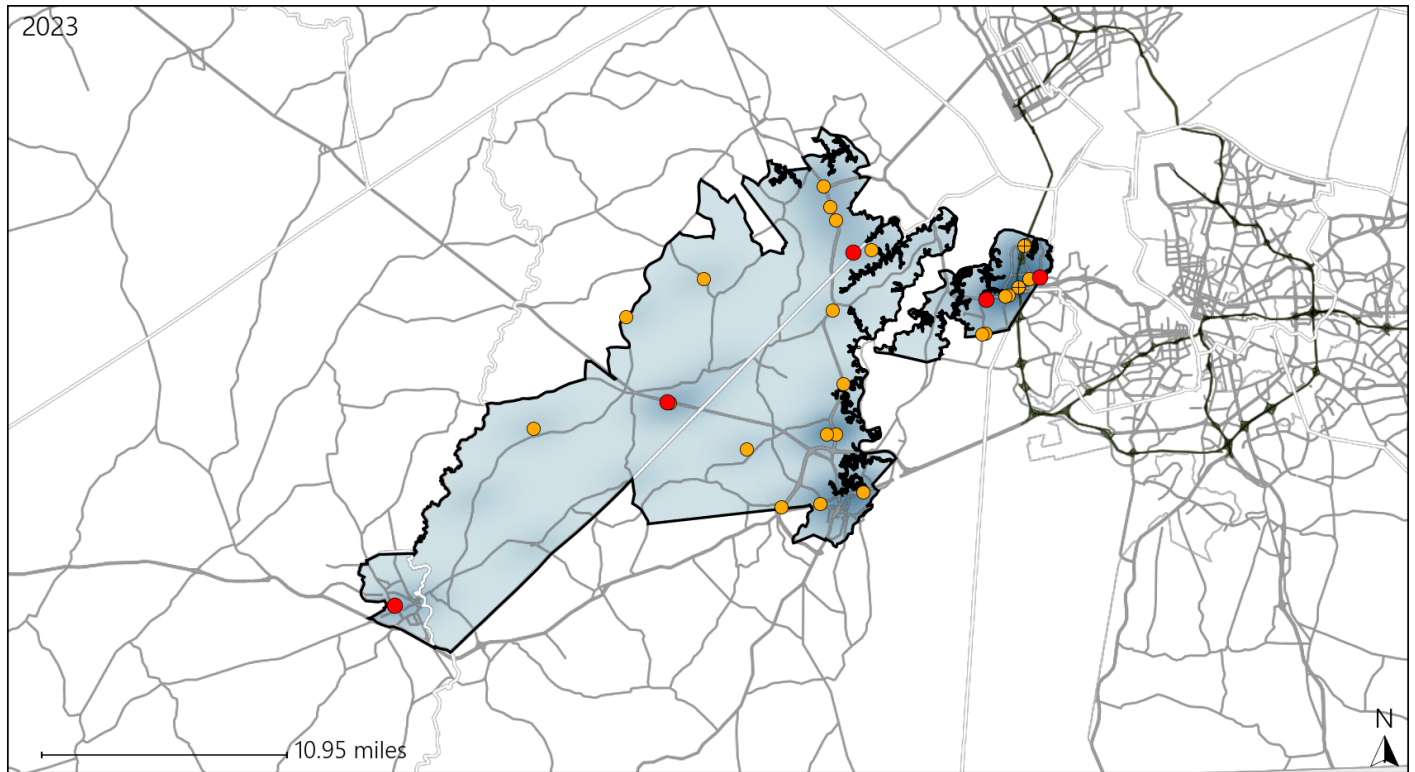


Available Crash Data - Calendar Year (CY)	CY 2020	CY 2021	CY 2022	CY 2023
Total Crashes	1191	1354	1346	1396
Fatal Crashes	5	11	7	10
Injury Crashes	542	575	583	649
Speed-Related Fatal Crashes	0	4	2	7
Percent of Speed-Related Fatal Crashes to Total Fatal Crashes	0%	36%	29%	70%
Speed-Related Injury Crashes	82	75	83	78
Percent of Speed-Related Injury Crashes to Total Injury Crashes	15%	13%	14%	12%

Virginia House District 84 Unrestrained Crash Statistics

Report Generated May, 2024

	Count	Highest Time Period(s)	Highest Day(s)	Highest Month(s)
Fatal Crashes	5	6:00pm - 8:59pm	Thursday	October
Unrestrained Fatalities	5	(60%)	(60%)	(40%)
Serious Injury Crashes	24	9:00am - 11:59am Midnight - 2:59am	Sunday	April • January
		(34%)	(29%)	(24%)



House District 84 Unrestrained-Related Crashes

Interstate Crashes

Non-interstate Crashes

● Fatal

● Fatal

⊕ Serious Injury

⊕ Serious Injury

The blue gradient represents the density of all unrestrained-related crashes.

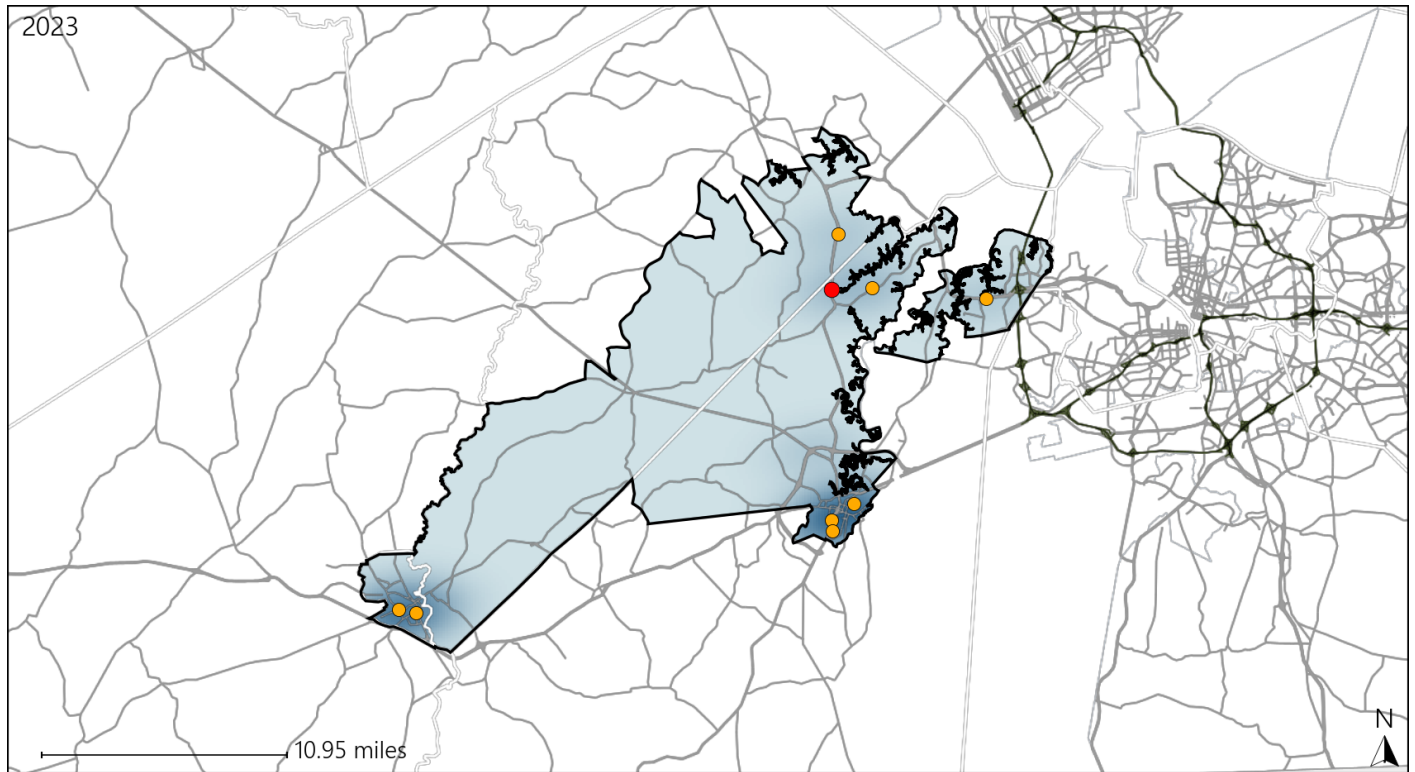


Available Crash Data - Calendar Year (CY)	CY 2020	CY 2021	CY 2022	CY 2023
Total Crashes	1191	1354	1346	1396
Fatalities	5	11	7	10
Injuries	788	823	855	947
Unrestrained Fatalities	3	3	2	5
Percent of Unrestrained Fatalities to Total Fatalities	60%	27%	29%	50%
Unrestrained Injuries	38	47	46	65
Percent of Unrestrained Injuries to Total Injuries	5%	6%	5%	7%

Virginia House District 84 Pedestrian Crash Statistics

Report Generated May, 2024

	Count	Highest Time Period(s)	Highest Day(s)	Highest Month(s)
Fatal Crashes	1	9:00pm - 11:59pm	Sunday	February
Pedestrian Fatalities	1	(100%)	(100%)	(100%)
Serious Injury Crashes	8	3:00pm - 5:59pm 6:00pm - 8:59pm	Sunday • Thursday	June • March
		(50%)	(50%)	(50%)



House District 84 Pedestrian-Related Crashes

- | | |
|--------------------|------------------------|
| Interstate Crashes | Non-interstate Crashes |
| ● Fatal | ● Fatal |
| ⊕ Serious Injury | ⊕ Serious Injury |

The blue gradient represents the density of all pedestrian-related crashes.

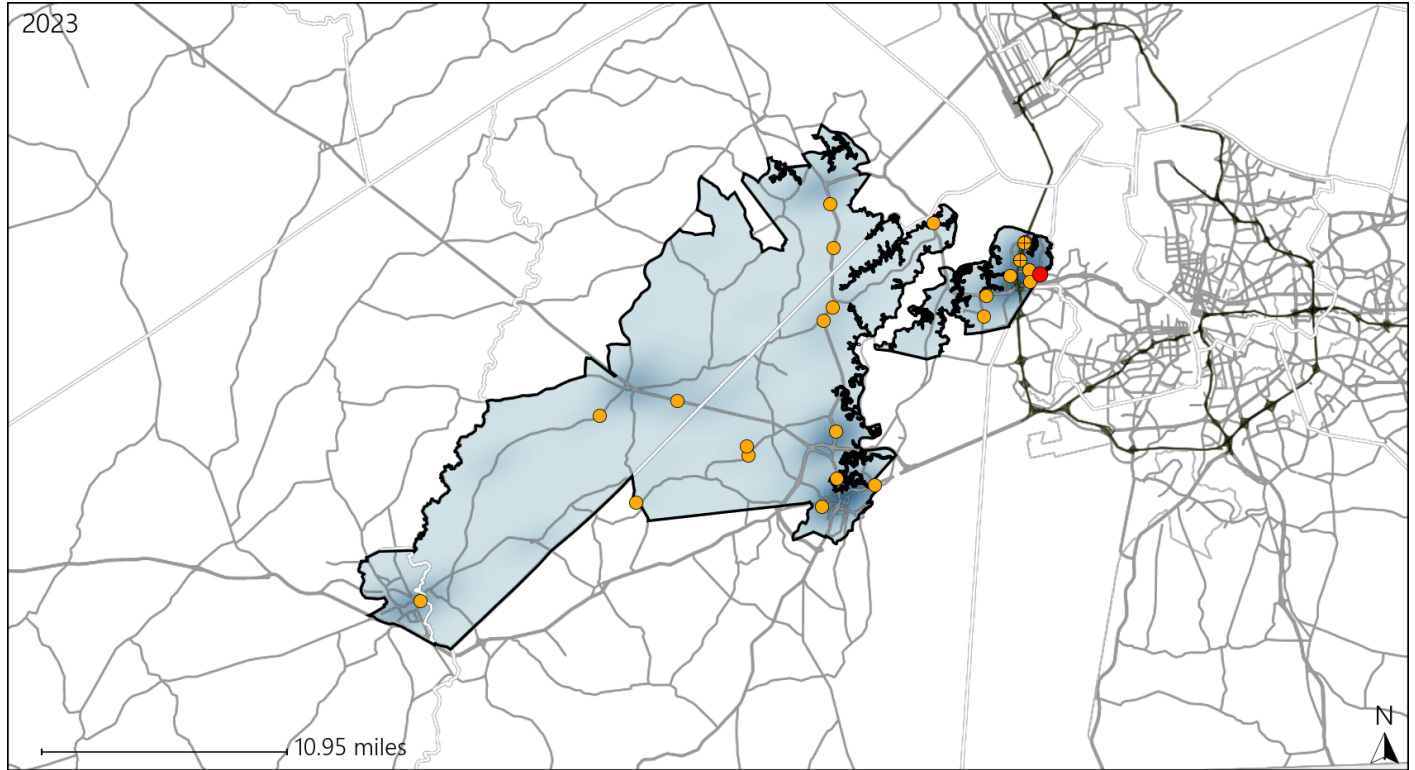


Available Crash Data - Calendar Year (CY)	CY 2020	CY 2021	CY 2022	CY 2023
Total Crashes	1191	1354	1346	1396
Fatal Crashes	5	11	7	10
Injury Crashes	542	575	583	649
Pedestrian-Related Fatal Crashes	0	1	0	1
Percent of Pedestrian-Related Fatal Crashes to Total Fatal Crashes	0%	9%	0%	10%
Pedestrian-Related Injury Crashes	14	16	17	15
Percent of Pedestrian-Related Injury Crashes to Total Injury Crashes	3%	3%	3%	2%

Virginia House District 84 Distracted Driving Crash Statistics

Report Generated May, 2024

	Count	Highest Time Period(s)	Highest Day(s)	Highest Month(s)
Fatal Crashes	1	9:00am - 11:59am	Thursday	October
Resulting Fatalities	1	(100%)	(100%)	(100%)
Serious Injury Crashes	24	3:00pm - 5:59pm	Monday	July
		(25%)	(25%)	(21%)



House District 84 Distracted Driving-Related Crashes

- | | |
|--------------------|------------------------|
| Interstate Crashes | Non-interstate Crashes |
| Fatal | Fatal |
| Serious Injury | Serious Injury |

The blue gradient represents the density of all distracted driving-related crashes.



Available Crash Data - Calendar Year (CY)	CY 2020	CY 2021	CY 2022	CY 2023
Total Crashes	1191	1354	1346	1396
Fatal Crashes	5	11	7	10
Injury Crashes	542	575	583	649
Distracted Driving-Related Fatal Crashes	1	5	0	1
Percent of Distracted Driving-Related Fatal Crashes to Total Fatal Crashes	20%	45%	0%	10%
Distracted Driving-Related Injury Crashes	91	96	94	108
Percent of Distracted Driving-Related Injury Crashes to Total Injury Crashes	17%	17%	16%	17%