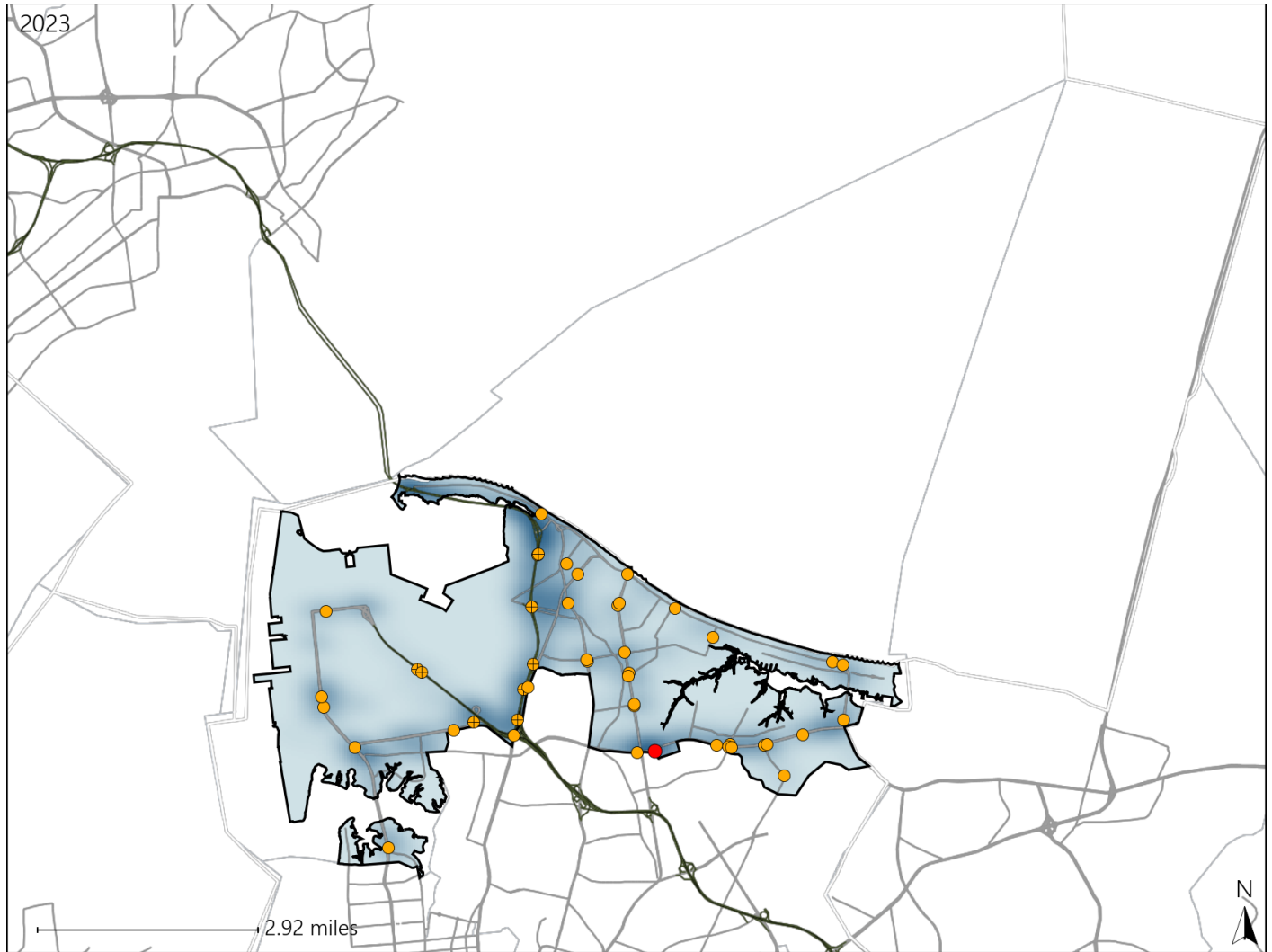


# Virginia House District 94 Crash Statistics

Report Generated May, 2024

	Count	Highest Time Period(s)	Highest Day(s)	Highest Month(s)
<b>Fatal Crashes</b>	<b>1</b>	<b>Midnight - 2:59am</b>	<b>Tuesday</b>	<b>July</b>
<b>Resulting Fatalities</b>	<b>1</b>	(100%)	(100%)	(100%)
<b>Serious Injury Crashes</b>	<b>46</b>	<b>3:00pm - 5:59pm</b>	<b>Sunday</b>	<b>August - October</b>
		(22%)	(22%)	(26%)



## House District 94 Crashes

Interstate Crashes

- Fatal
- ⊕ Serious Injury

Non-interstate Crashes

- Fatal
- Serious Injury

The blue gradient represents the density of all crashes.

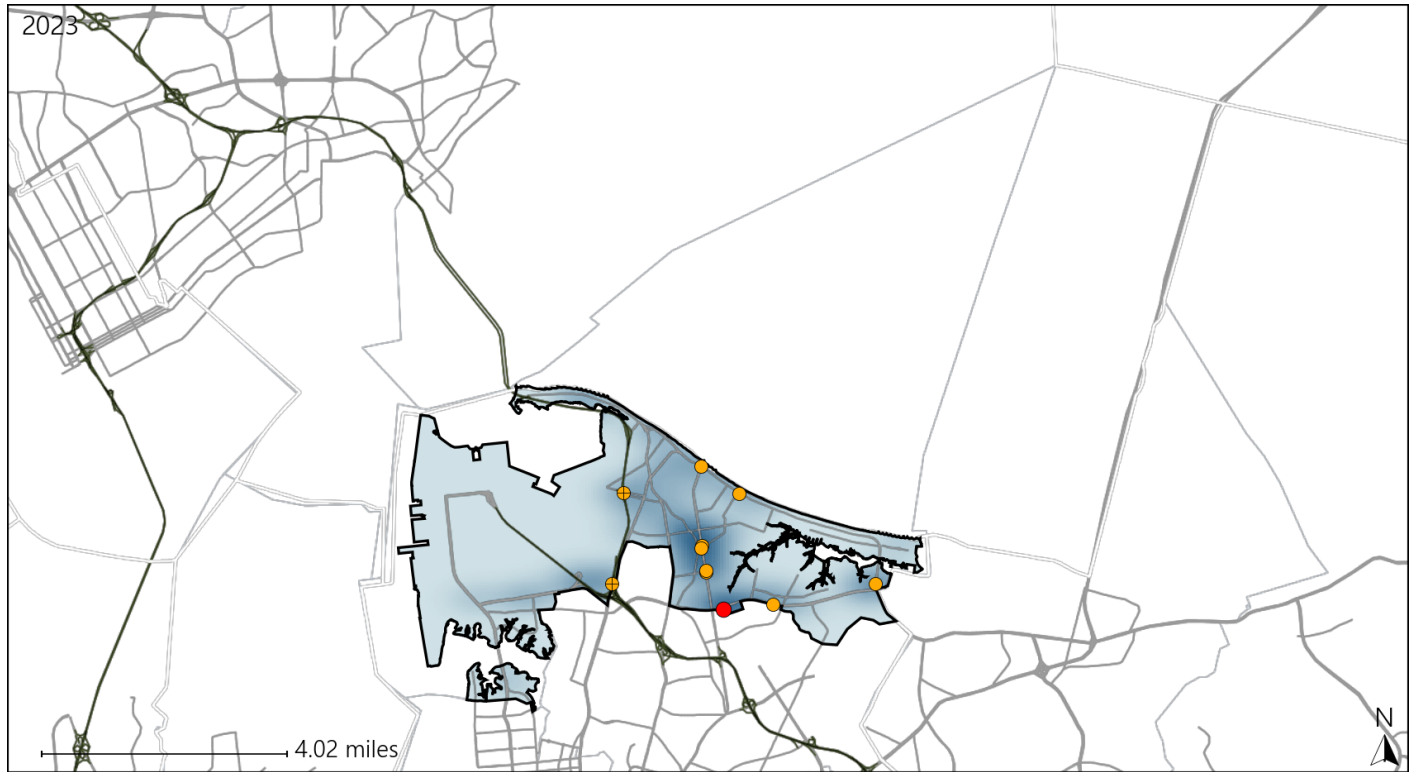


Available Crash Data - Calendar Year (CY)	CY 2020	CY 2021	CY 2022	CY 2023
<b>Total Crashes</b>	<b>754</b>	<b>938</b>	<b>789</b>	<b>864</b>
<b>Fatal Crashes</b>	<b>5</b>	<b>9</b>	<b>4</b>	<b>1</b>
<b>Injury Crashes</b>	<b>259</b>	<b>306</b>	<b>254</b>	<b>276</b>

# Virginia House District 94 Alcohol Crash Statistics

Report Generated May, 2024

	Count	Highest Time Period(s)	Highest Day(s)	Highest Month(s)
<b>Fatal Crashes</b>	<b>1</b>	<b>Midnight - 2:59am</b>	<b>Tuesday</b>	<b>July</b>
<b>Resulting Fatalities</b>	<b>1</b>	(100%)	(100%)	(100%)
<b>Serious Injury Crashes</b>	<b>10</b>	<b>Midnight - 2:59am</b>	<b>Saturday • Sunday</b>	<b>January • October</b>
		(30%)	(60%)	(40%)



### House District 94 Alcohol-Related Crashes

Interstate Crashes

Non-interstate Crashes

- Fatal
- Serious Injury

- Fatal
- Serious Injury

The blue gradient represents the density of all alcohol-related crashes.

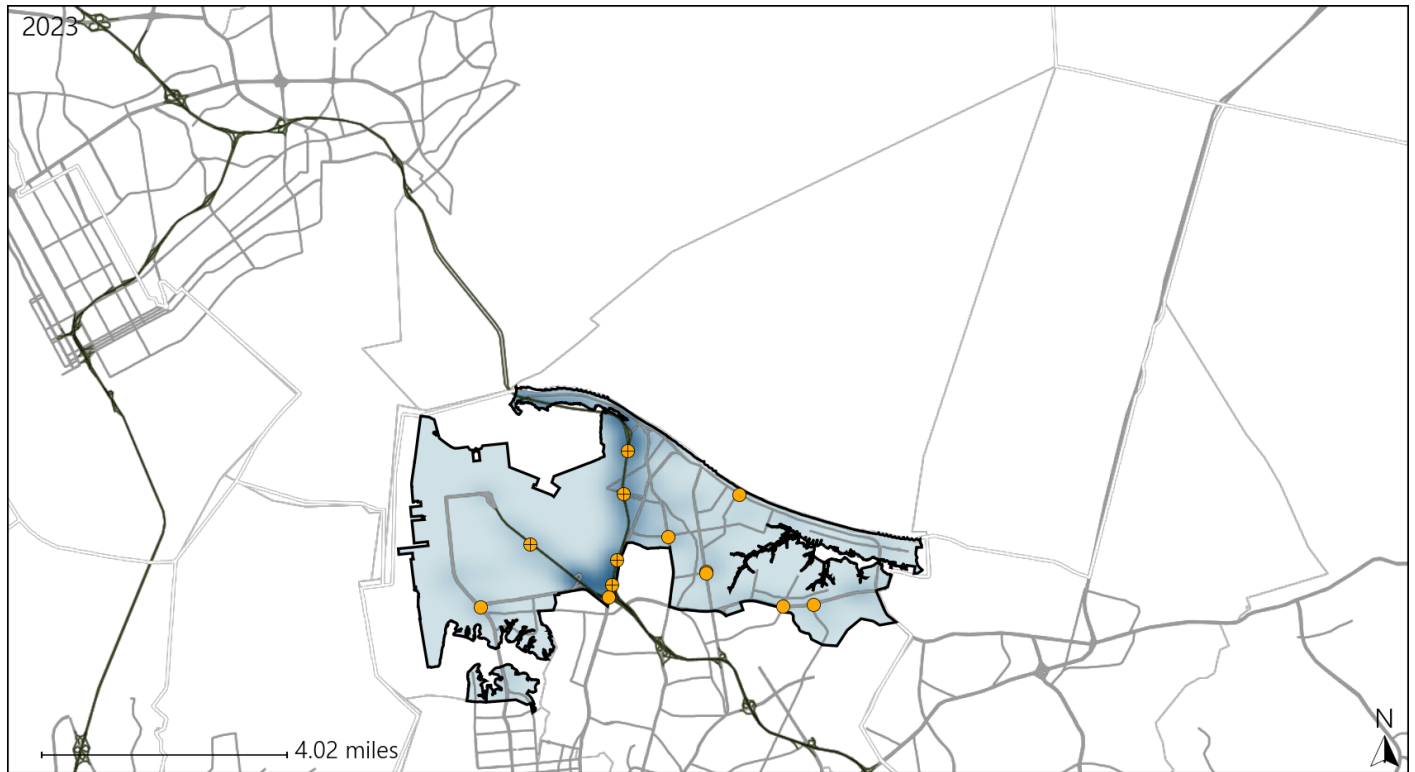


Available Crash Data - Calendar Year (CY)	CY 2020	CY 2021	CY 2022	CY 2023
<b>Total Crashes</b>	<b>754</b>	<b>938</b>	<b>789</b>	<b>864</b>
<b>Fatal Crashes</b>	<b>5</b>	<b>9</b>	<b>4</b>	<b>1</b>
<b>Injury Crashes</b>	<b>259</b>	<b>306</b>	<b>254</b>	<b>276</b>
<b>Alcohol-Related Fatal Crashes</b>	<b>2</b>	<b>4</b>	<b>3</b>	<b>1</b>
<b>Percent of Alcohol-Related Fatal Crashes to Total Fatal Crashes</b>	<b>40%</b>	<b>44%</b>	<b>75%</b>	<b>100%</b>
<b>Alcohol-Related Injury Crashes</b>	<b>23</b>	<b>16</b>	<b>12</b>	<b>26</b>
<b>Percent of Alcohol-Related Injury Crashes to Total Injury Crashes</b>	<b>9%</b>	<b>5%</b>	<b>5%</b>	<b>9%</b>

# Virginia House District 94 Speed Crash Statistics

Report Generated May, 2024

	Count	Highest Time Period(s)	Highest Day(s)	Highest Month(s)
<b>Fatal Crashes</b>	<b>0</b>	-	-	-
<b>Resulting Fatalities</b>	<b>0</b>	-	-	-
<b>Serious Injury Crashes</b>	<b>13</b>	9:00pm - 11:59pm Midnight - 2:59am (46%)	Sunday (31%)	April (23%)



## House District 94 Speed-Related Crashes

Interstate Crashes

- Fatal
- ⊕ Serious Injury

Non-interstate Crashes

- Fatal
- Serious Injury

The blue gradient represents the density of all speed-related crashes.

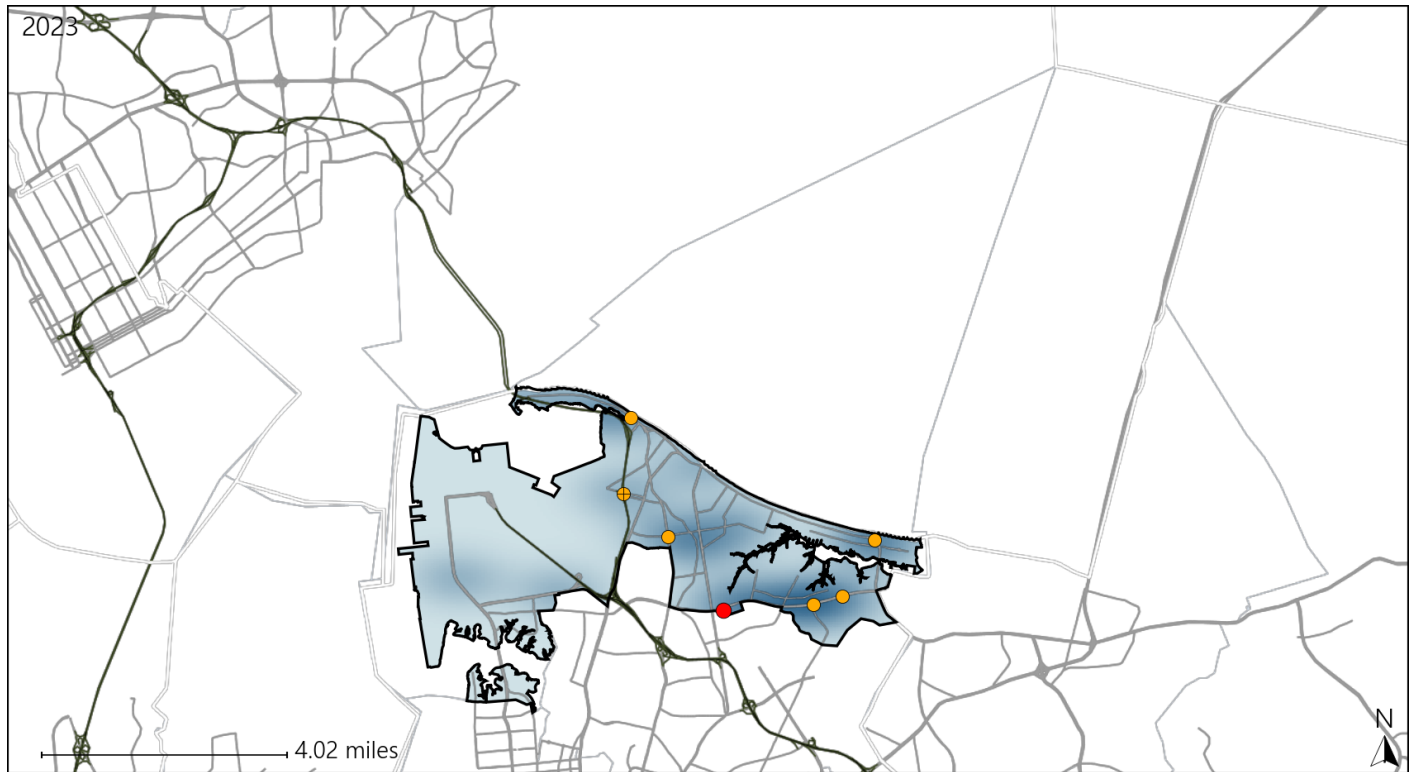


Available Crash Data - Calendar Year (CY)	CY 2020	CY 2021	CY 2022	CY 2023
Total Crashes	754	938	789	864
Fatal Crashes	5	9	4	1
Injury Crashes	259	306	254	276
Speed-Related Fatal Crashes	2	4	2	0
Percent of Speed-Related Fatal Crashes to Total Fatal Crashes	40%	44%	50%	0%
Speed-Related Injury Crashes	51	83	58	62
Percent of Speed-Related Injury Crashes to Total Injury Crashes	20%	27%	23%	22%

# Virginia House District 94 Unrestrained Crash Statistics

Report Generated May, 2024

	Count	Highest Time Period(s)	Highest Day(s)	Highest Month(s)
<b>Fatal Crashes</b>	<b>1</b>	<b>Midnight - 2:59am</b>	<b>Tuesday</b>	<b>July</b>
<b>Unrestrained Fatalities</b>	<b>1</b>	<b>(100%)</b>	<b>(100%)</b>	<b>(100%)</b>
<b>Serious Injury Crashes</b>	<b>6</b>	<b>3:00pm - 5:59pm 6:00am - 8:59am</b>	<b>Friday</b>	<b>February • January</b>
		<b>(34%)</b>	<b>(33%)</b>	<b>(34%)</b>



## House District 94 Unrestrained-Related Crashes

Interstate Crashes

- Fatal
- Serious Injury

Non-interstate Crashes

- Fatal
- Serious Injury

The blue gradient represents the density of all unrestrained-related crashes.

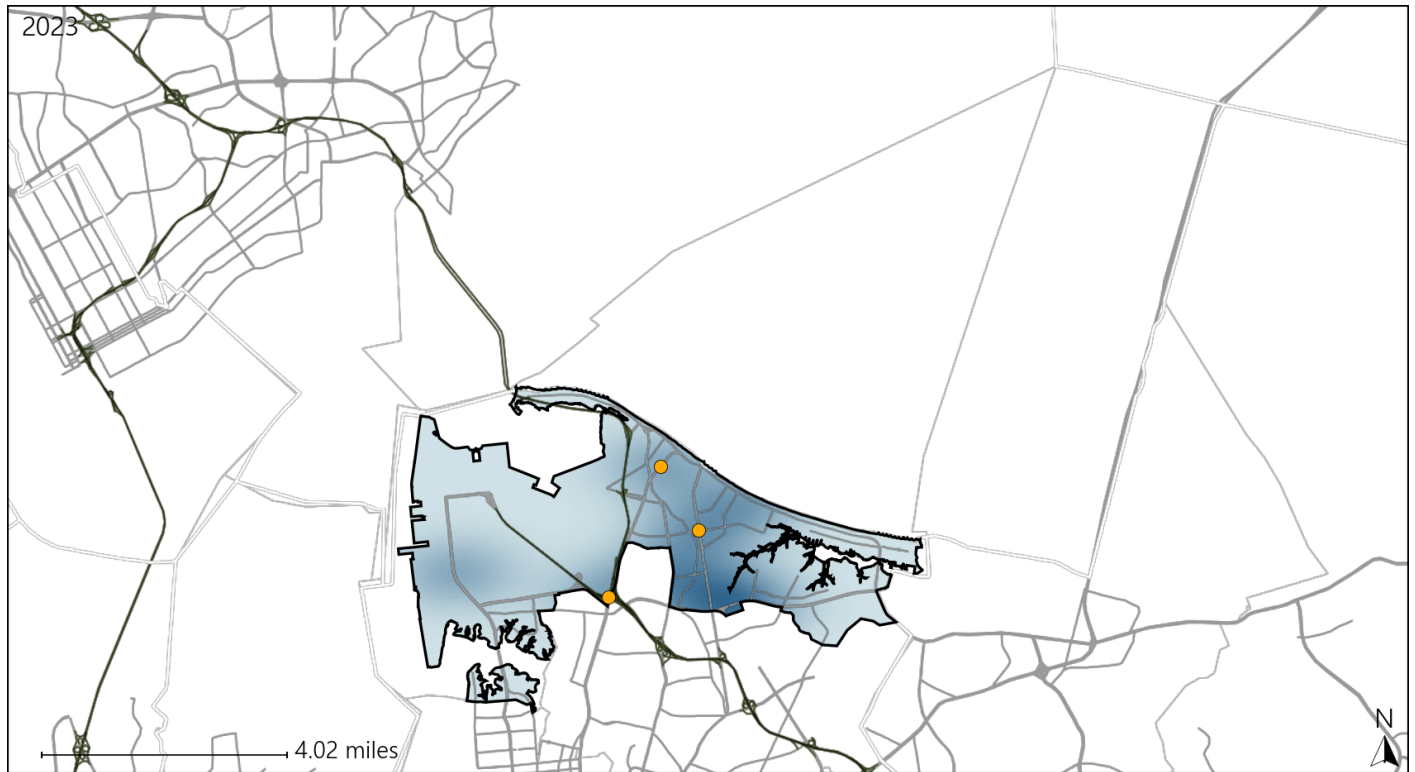


Available Crash Data - Calendar Year (CY)	CY 2020	CY 2021	CY 2022	CY 2023
<b>Total Crashes</b>	<b>754</b>	<b>938</b>	<b>789</b>	<b>864</b>
<b>Fatalities</b>	<b>5</b>	<b>9</b>	<b>4</b>	<b>1</b>
<b>Injuries</b>	<b>415</b>	<b>448</b>	<b>413</b>	<b>426</b>
<b>Unrestrained Fatalities</b>	<b>1</b>	<b>4</b>	<b>1</b>	<b>1</b>
<b>Percent of Unrestrained Fatalities to Total Fatalities</b>	<b>20%</b>	<b>44%</b>	<b>25%</b>	<b>100%</b>
<b>Unrestrained Injuries</b>	<b>19</b>	<b>34</b>	<b>19</b>	<b>20</b>
<b>Percent of Unrestrained Injuries to Total Injuries</b>	<b>5%</b>	<b>8%</b>	<b>5%</b>	<b>5%</b>

# Virginia House District 94 Bicycle Crash Statistics

Report Generated May, 2024

	Count	Highest Time Period(s)	Highest Day(s)	Highest Month(s)
<b>Fatal Crashes</b>	<b>0</b>	-	-	-
<b>Bicycle Fatalities</b>	<b>0</b>	-	-	-
<b>Serious Injury Crashes</b>	<b>3</b>	3:00am - 5:59am 6:00am - 8:59am (66%)	Thursday • Tuesday (66%)	April • August (66%)



### House District 94 Bicycle-Related Crashes

Interstate Crashes                      Non-interstate Crashes  
 ● Fatal                                      ● Fatal  
 ⊕ Serious Injury                          ⊕ Serious Injury

The blue gradient represents the density of all bicycle-related crashes.

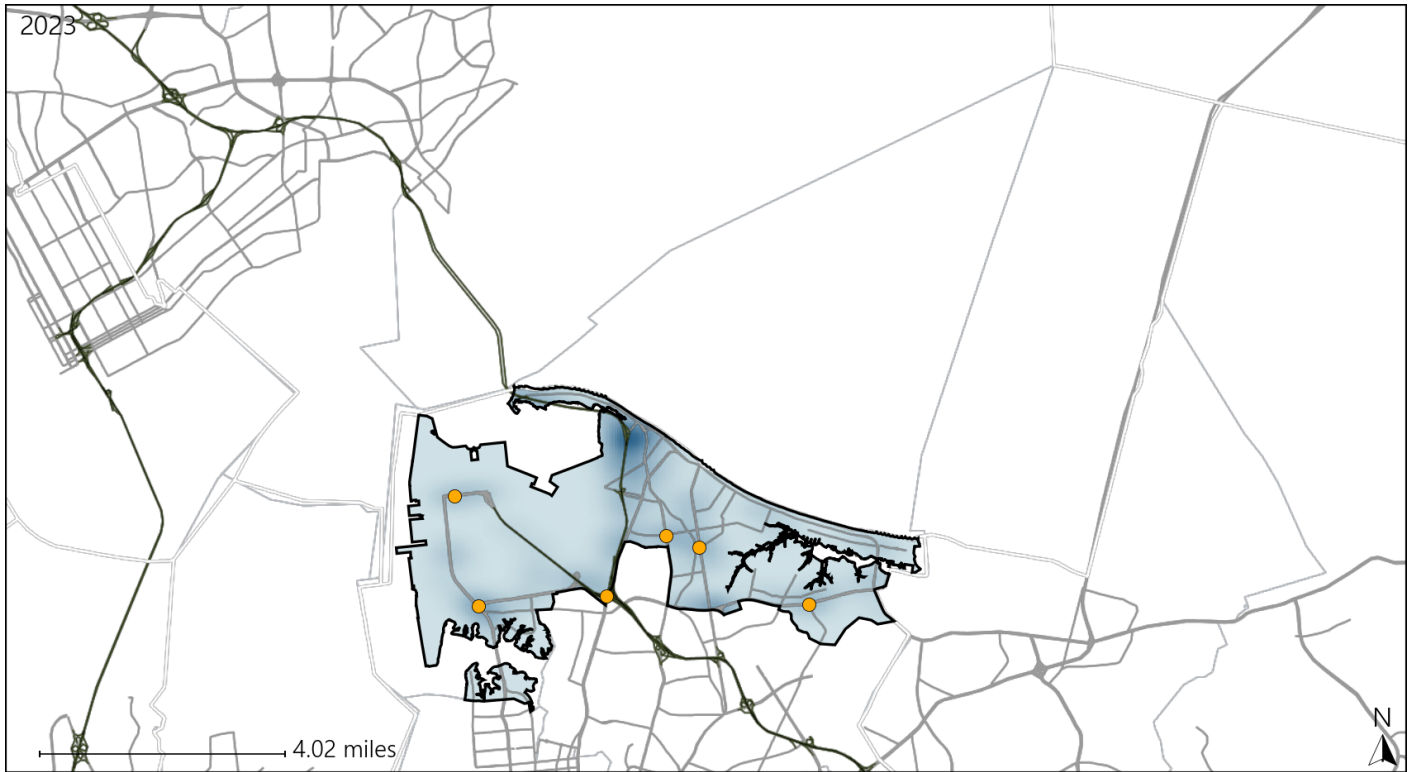


Available Crash Data - Calendar Year (CY)	CY 2020	CY 2021	CY 2022	CY 2023
Total Crashes	754	938	789	864
Fatal Crashes	5	9	4	1
Injury Crashes	259	306	254	276
Bicycle-Related Fatal Crashes	0	0	0	0
Percent of Bicycle-Related Fatal Crashes to Total Fatal Crashes	0%	0%	0%	0%
Bicycle-Related Injury Crashes	6	5	3	7
Percent of Bicycle-Related Injury Crashes to Total Injury Crashes	2%	2%	1%	3%

# Virginia House District 94 Distracted Driving Crash Statistics

Report Generated May, 2024

	Count	Highest Time Period(s)	Highest Day(s)	Highest Month(s)
<b>Fatal Crashes</b>	0	-	-	-
<b>Resulting Fatalities</b>	0	-	-	-
<b>Serious Injury Crashes</b>	6	9:00am - 11:59am (33%)	Sunday (33%)	April (33%)



## House District 94 Distracted Driving-Related Crashes

- |                    |                        |
|--------------------|------------------------|
| Interstate Crashes | Non-interstate Crashes |
| ● Fatal            | ● Fatal                |
| ● Serious Injury   | ● Serious Injury       |

The blue gradient represents the density of all distracted driving-related crashes.



Available Crash Data - Calendar Year (CY)	CY 2020	CY 2021	CY 2022	CY 2023
Total Crashes	754	938	789	864
Fatal Crashes	5	9	4	1
Injury Crashes	259	306	254	276
Distracted Driving-Related Fatal Crashes	1	2	0	0
Percent of Distracted Driving-Related Fatal Crashes to Total Fatal Crashes	20%	22%	0%	0%
Distracted Driving-Related Injury Crashes	47	49	41	35
Percent of Distracted Driving-Related Injury Crashes to Total Injury Crashes	18%	16%	16%	13%