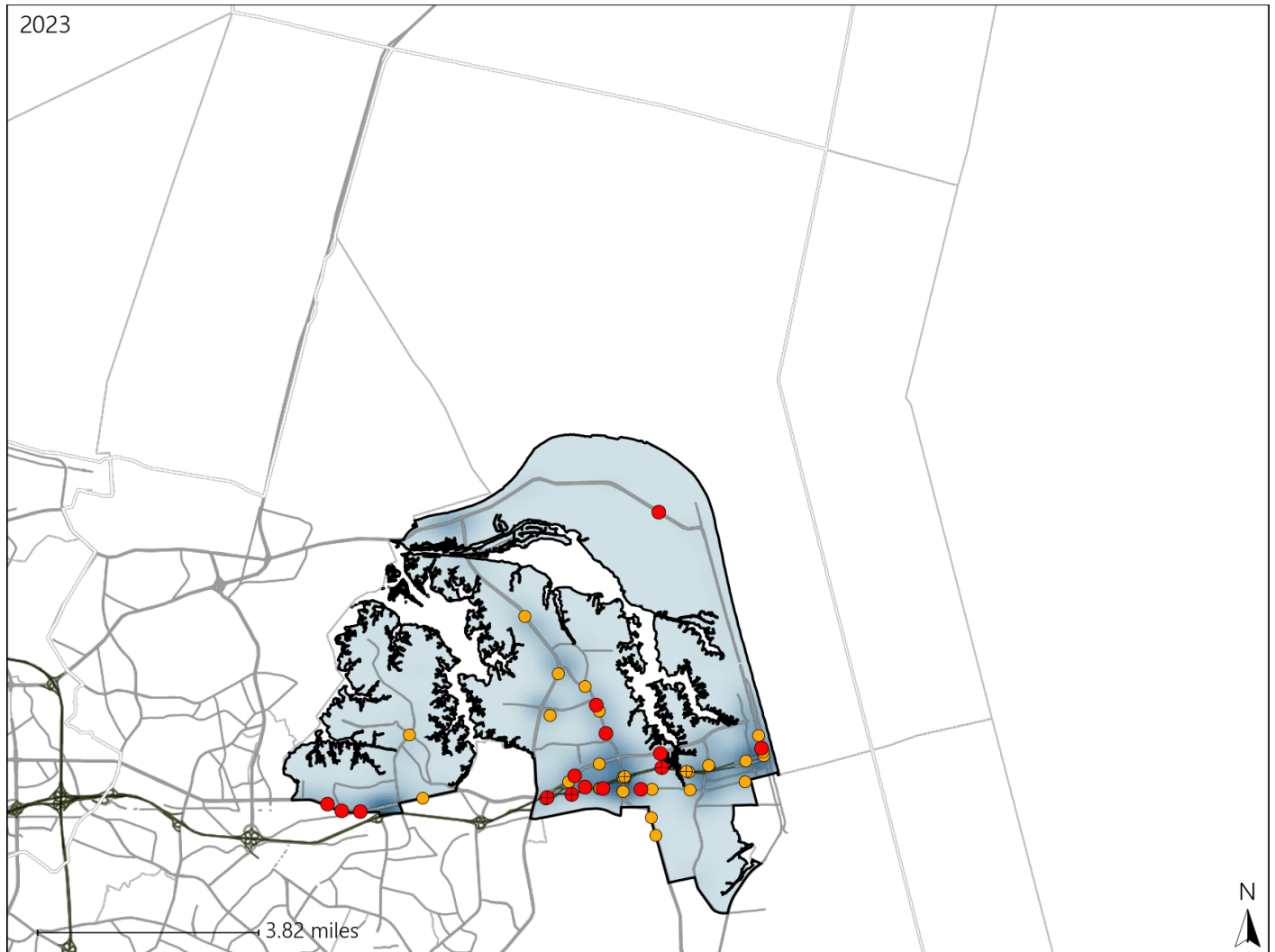


# Virginia House District 99 Crash Statistics

Report Generated May, 2024

	Count	Highest Time Period(s)	Highest Day(s)	Highest Month(s)
<b>Fatal Crashes</b>	<b>15</b>	3:00pm - 5:59pm	Sunday	August • January
<b>Resulting Fatalities</b>	<b>15</b>	(27%)	(27%)	(26%)
<b>Serious Injury Crashes</b>	<b>29</b>	3:00pm - 5:59pm 6:00pm - 8:59pm	Saturday	August • February
		(48%)	(31%)	(28%)



### House District 99 Crashes

Interstate Crashes

- Fatal
- Serious Injury

Non-interstate Crashes

- Fatal
- Serious Injury

The blue gradient represents the density of all crashes.

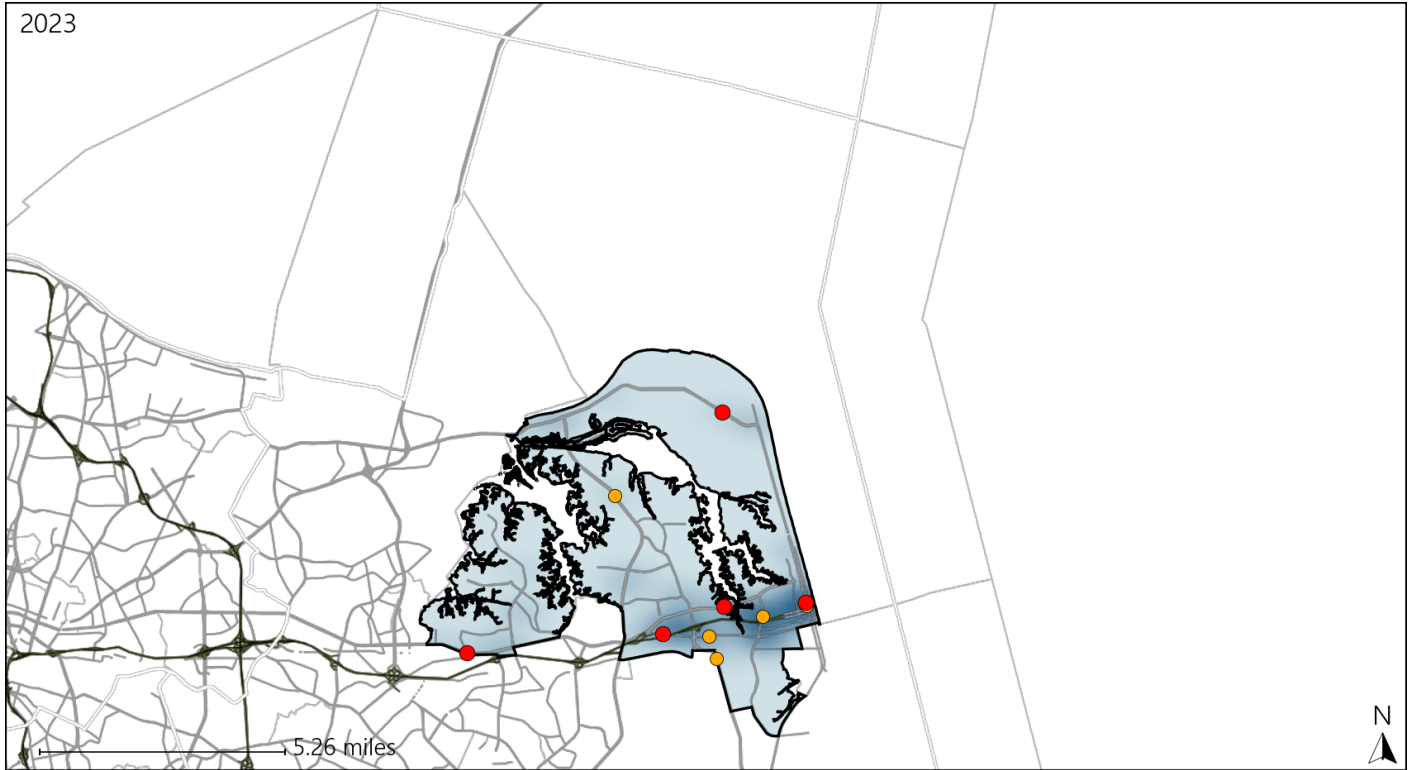


Available Crash Data - Calendar Year (CY)	CY 2020	CY 2021	CY 2022	CY 2023
Total Crashes	972	1034	906	971
Fatal Crashes	6	5	4	15
Injury Crashes	321	290	259	290

# Virginia House District 99 Alcohol Crash Statistics

Report Generated May, 2024

	Count	Highest Time Period(s)	Highest Day(s)	Highest Month(s)
<b>Fatal Crashes</b>	<b>5</b>	<b>3:00pm - 5:59pm</b>	<b>Saturday</b>	<b>January</b>
<b>Resulting Fatalities</b>	<b>5</b>	<b>(40%)</b>	<b>(40%)</b>	<b>(40%)</b>
<b>Serious Injury Crashes</b>	<b>5</b>	<b>9:00pm - 11:59pm</b>	<b>Saturday</b>	<b>October</b>
		<b>(40%)</b>	<b>(60%)</b>	<b>(40%)</b>



## House District 99 Alcohol-Related Crashes

Interstate Crashes

- Fatal
- Serious Injury

Non-interstate Crashes

- Fatal
- Serious Injury

The blue gradient represents the density of all alcohol-related crashes.

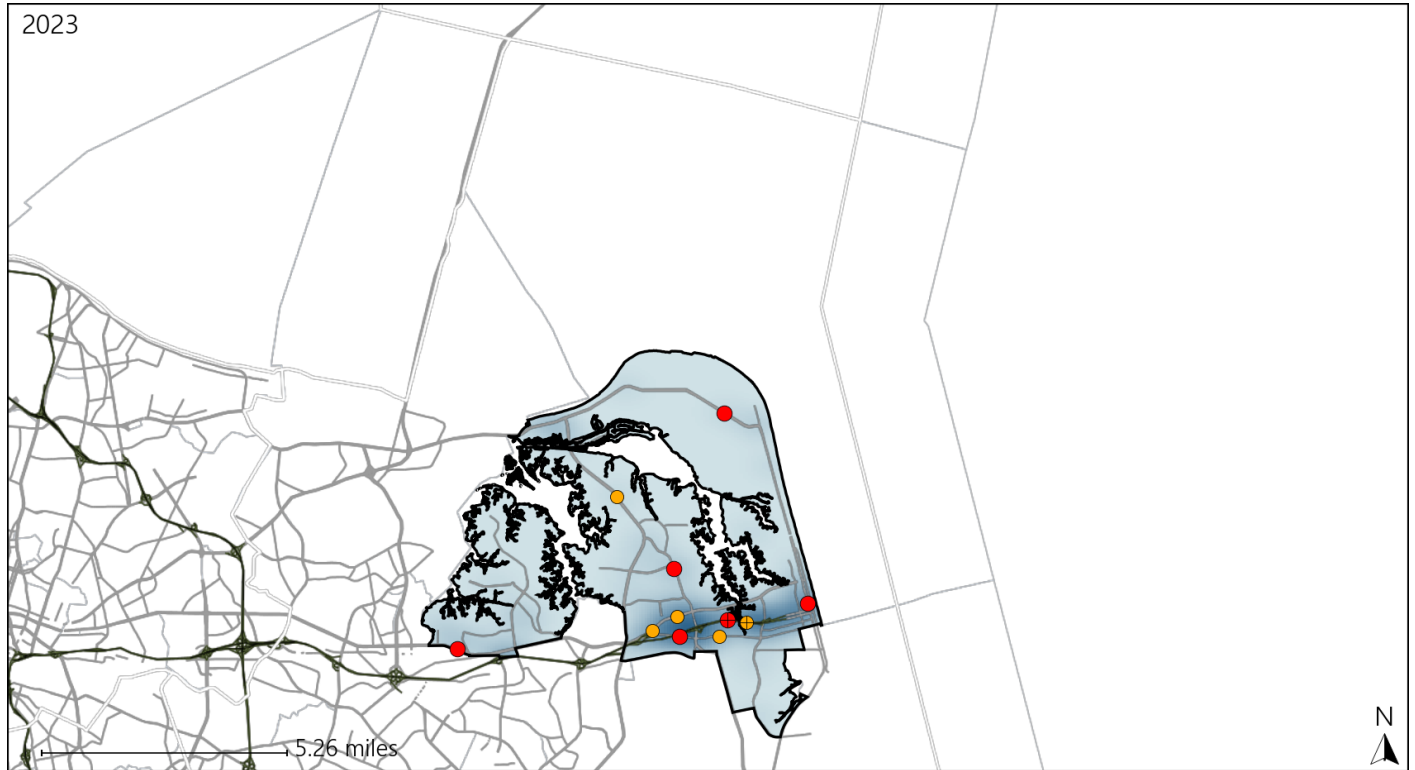


Available Crash Data - Calendar Year (CY)	CY 2020	CY 2021	CY 2022	CY 2023
Total Crashes	972	1034	906	971
Fatal Crashes	6	5	4	15
Injury Crashes	321	290	259	290
Alcohol-Related Fatal Crashes	4	2	0	5
Percent of Alcohol-Related Fatal Crashes to Total Fatal Crashes	67%	40%	0%	33%
Alcohol-Related Injury Crashes	41	36	28	27
Percent of Alcohol-Related Injury Crashes to Total Injury Crashes	13%	12%	11%	9%

# Virginia House District 99 Speed Crash Statistics

Report Generated May, 2024

	Count	Highest Time Period(s)	Highest Day(s)	Highest Month(s)
<b>Fatal Crashes</b>	<b>6</b>	3:00am - 5:59am	<b>Sunday</b>	<b>May</b>
<b>Resulting Fatalities</b>	<b>6</b>	3:00pm - 5:59pm (34%)	(50%)	(33%)
<b>Serious Injury Crashes</b>	<b>5</b>	3:00pm - 5:59pm (60%)	<b>Saturday</b> (60%)	<b>August</b> (40%)




### House District 99 Speed-Related Crashes


Interstate Crashes

Non-interstate Crashes

 Fatal

 Fatal

 Serious Injury

 Serious Injury

The blue gradient represents the density of all speed-related crashes.

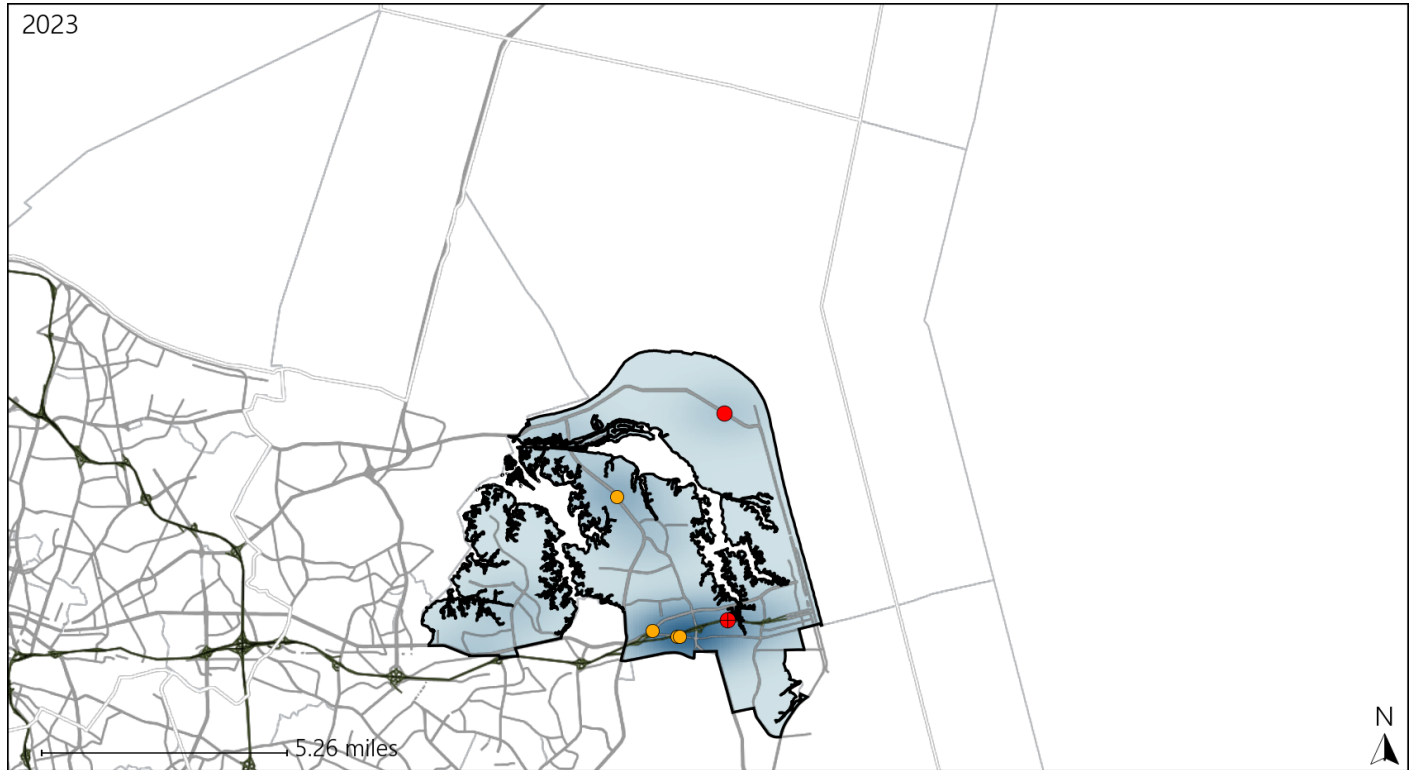


Available Crash Data - Calendar Year (CY)	CY 2020	CY 2021	CY 2022	CY 2023
Total Crashes	972	1034	906	971
Fatal Crashes	6	5	4	15
Injury Crashes	321	290	259	290
Speed-Related Fatal Crashes	3	4	2	6
Percent of Speed-Related Fatal Crashes to Total Fatal Crashes	50%	80%	50%	40%
Speed-Related Injury Crashes	53	59	36	41
Percent of Speed-Related Injury Crashes to Total Injury Crashes	17%	20%	14%	14%

# Virginia House District 99 Unrestrained Crash Statistics

Report Generated May, 2024

	Count	Highest Time Period(s)	Highest Day(s)	Highest Month(s)
<b>Fatal Crashes</b>	<b>2</b>	<b>3:00pm - 5:59pm</b>	<b>Friday • Sunday</b>	<b>May • September</b>
<b>Unrestrained Fatalities</b>	<b>2</b>	<b>Midnight - 2:59am</b> (100%)	<b>(100%)</b>	<b>(100%)</b>
<b>Serious Injury Crashes</b>	<b>4</b>	<b>3:00pm - 5:59pm</b> (50%)	<b>Saturday</b> (50%)	<b>August • November</b> (50%)



## House District 99 Unrestrained-Related Crashes

Interstate Crashes

- Fatal
- Serious Injury

Non-interstate Crashes

- Fatal
- Serious Injury

The blue gradient represents the density of all unrestrained-related crashes.

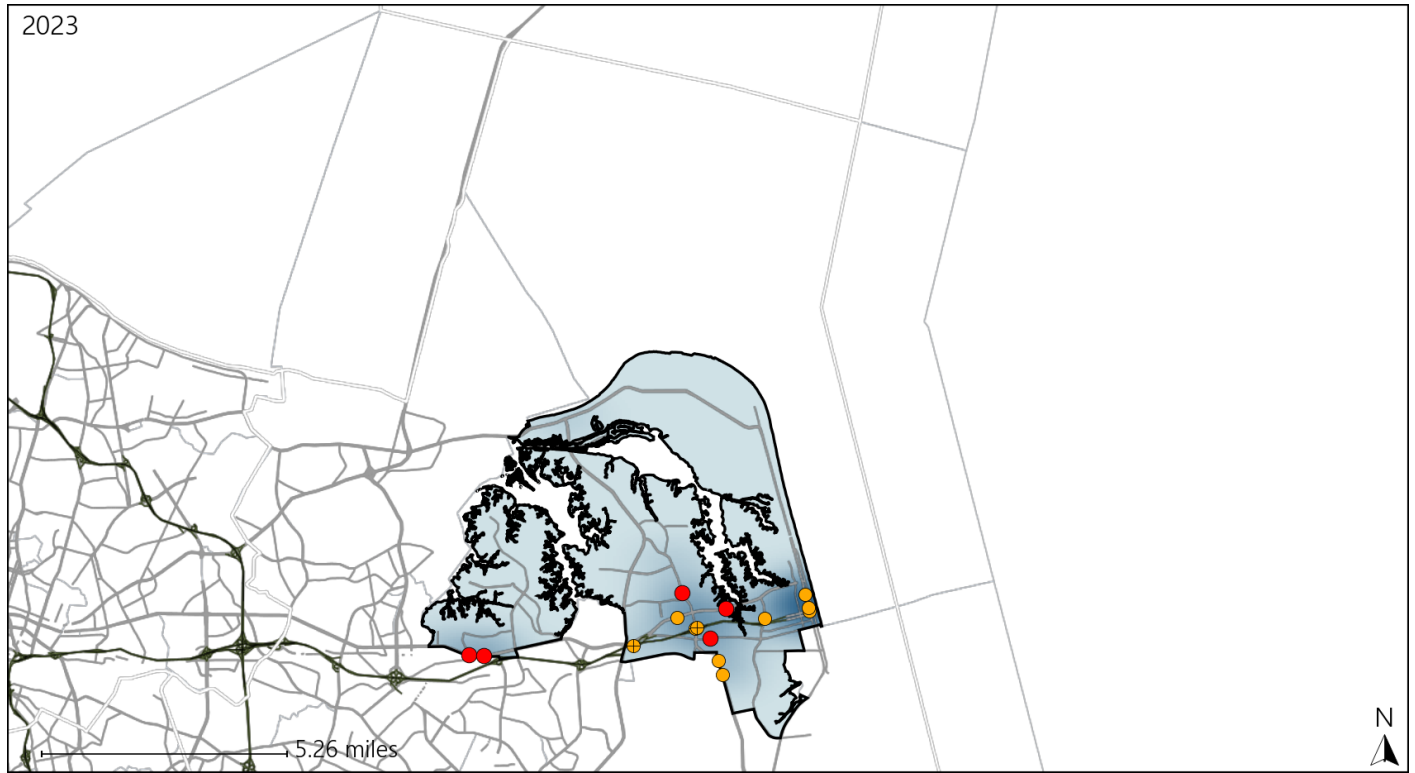


Available Crash Data - Calendar Year (CY)	CY 2020	CY 2021	CY 2022	CY 2023
Total Crashes	972	1034	906	971
Fatalities	6	5	4	15
Injuries	527	461	402	449
Unrestrained Fatalities	1	1	1	2
Percent of Unrestrained Fatalities to Total Fatalities	17%	20%	25%	13%
Unrestrained Injuries	27	20	20	16
Percent of Unrestrained Injuries to Total Injuries	5%	4%	5%	4%

# Virginia House District 99 Pedestrian Crash Statistics

Report Generated May, 2024

	Count	Highest Time Period(s)	Highest Day(s)	Highest Month(s)
<b>Fatal Crashes</b>	<b>5</b>	3:00pm - 5:59pm	<b>Friday</b>	<b>January</b>
<b>Pedestrian Fatalities</b>	<b>5</b>	6:00pm - 8:59pm (80%)	(40%)	(40%)
<b>Serious Injury Crashes</b>	<b>10</b>	9:00pm - 11:59pm Midnight - 2:59am (60%)	<b>Saturday</b> (40%)	<b>June</b> (30%)



### House District 99 Pedestrian-Related Crashes

Interstate Crashes

Non-interstate Crashes

● Fatal

● Fatal

⊕ Serious Injury

⊕ Serious Injury

The blue gradient represents the density of all pedestrian-related crashes.

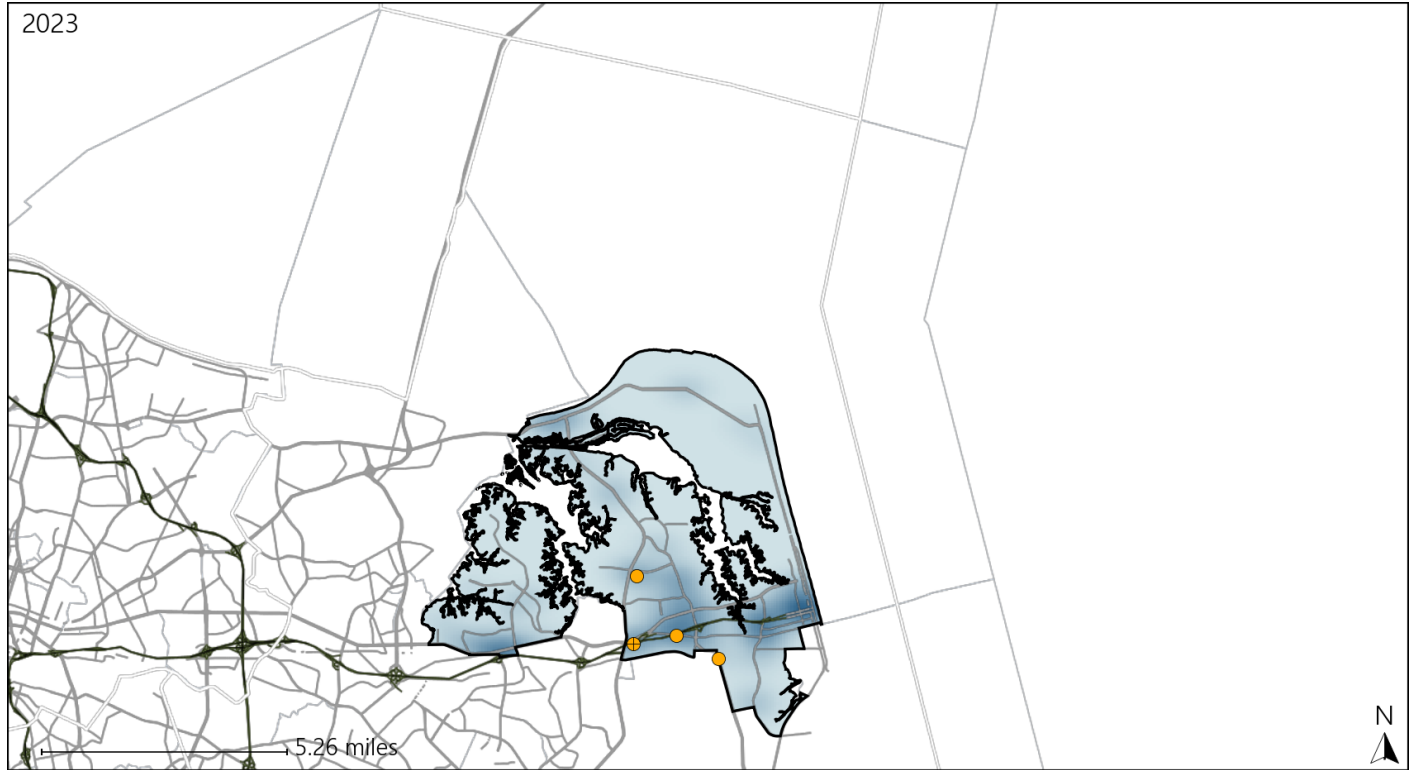


Available Crash Data - Calendar Year (CY)	CY 2020	CY 2021	CY 2022	CY 2023
Total Crashes	972	1034	906	971
Fatal Crashes	6	5	4	15
Injury Crashes	321	290	259	290
Pedestrian-Related Fatal Crashes	3	0	0	5
Percent of Pedestrian-Related Fatal Crashes to Total Fatal Crashes	50%	0%	0%	33%
Pedestrian-Related Injury Crashes	16	16	8	21
Percent of Pedestrian-Related Injury Crashes to Total Injury Crashes	5%	6%	3%	7%

# Virginia House District 99 Distracted Driving Crash Statistics

Report Generated May, 2024

	Count	Highest Time Period(s)	Highest Day(s)	Highest Month(s)
<b>Fatal Crashes</b>	0	-	-	-
<b>Resulting Fatalities</b>	0	-	-	-
<b>Serious Injury Crashes</b>	4	Midnight - 2:59am (50%)	Friday • Saturday (50%)	December • February (50%)



## House District 99 Distracted Driving-Related Crashes

- |  |  |
|--|--|
| Interstate Crashes                                   | Non-interstate Crashes                               |
| <span style="color: red;">●</span> Fatal             | <span style="color: red;">●</span> Fatal             |
| <span style="color: orange;">●</span> Serious Injury | <span style="color: orange;">●</span> Serious Injury |

The blue gradient represents the density of all distracted driving-related crashes.



Available Crash Data - Calendar Year (CY)	CY 2020	CY 2021	CY 2022	CY 2023
Total Crashes	972	1034	906	971
Fatal Crashes	6	5	4	15
Injury Crashes	321	290	259	290
Distracted Driving-Related Fatal Crashes	1	0	1	0
Percent of Distracted Driving-Related Fatal Crashes to Total Fatal Crashes	17%	0%	25%	0%
Distracted Driving-Related Injury Crashes	60	43	38	36
Percent of Distracted Driving-Related Injury Crashes to Total Injury Crashes	19%	15%	15%	12%